

CONN. A	WIRE #	CONN. C	WIRE #	CONN. I	WIRE #
1	22	1	21	1	83
2	27	2	19	2	33
3	159	3	18	3	32
4	26	4	24	4	147
		5	25	5	65B
		6	28	6	145
				7	24
				8	144
				9	141
				10	143

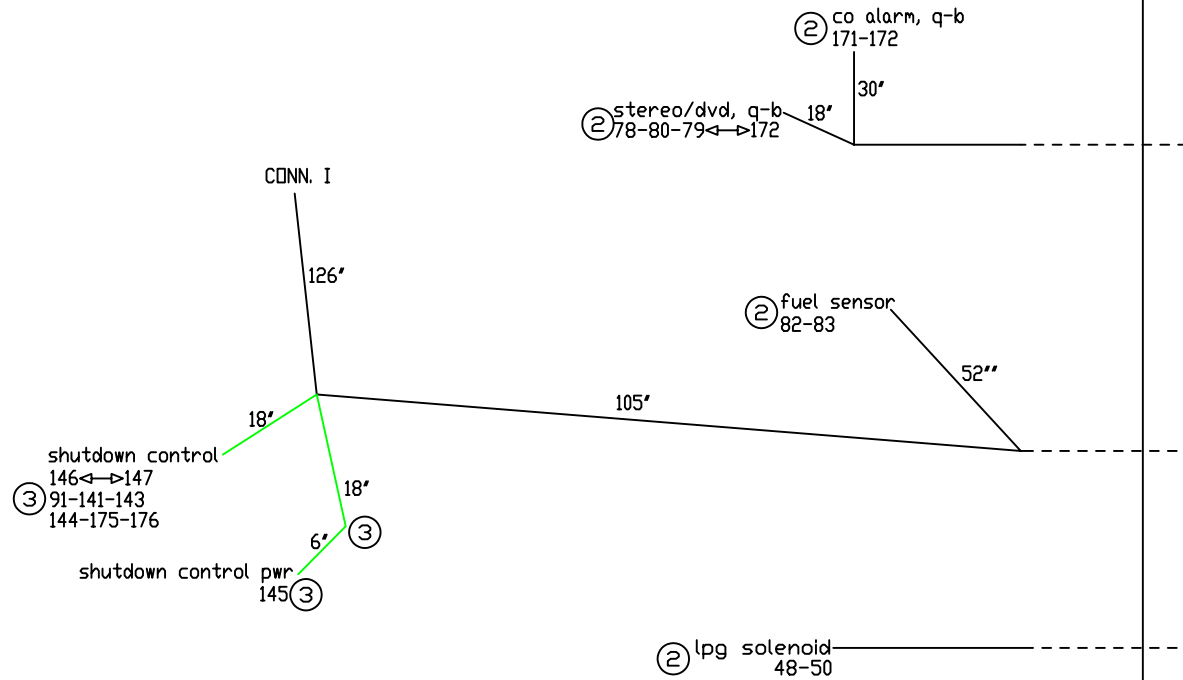
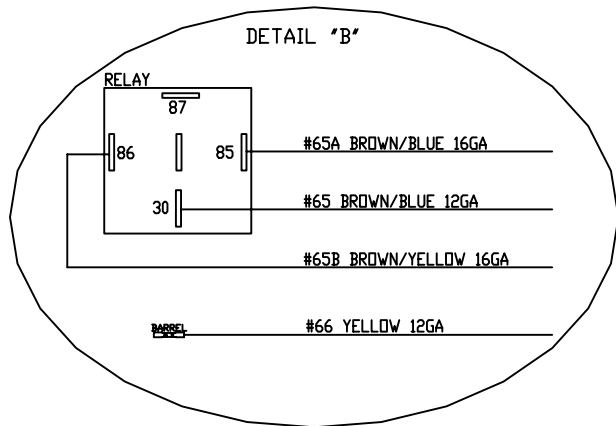
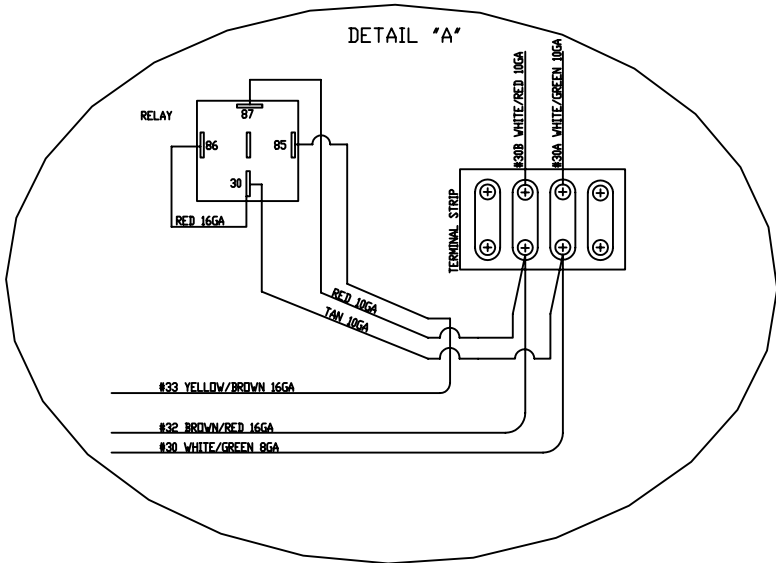
CONNECTOR TYPES

CONN. A	Deutsch DTP 4-pin, male housing
CONN. C	Deutsch DT 6-pin, male housing
CONN. I	Molex MX150L 10-pin, receptacle

- LEGEND -
- 1 - SEE CONNECTOR LIST
 - 2 - BARREL (BUTT SPLICE)
 - 3 - #10 RING TERMINAL
 - 4 - 1/4" RING TERMINAL
 - 5 - BULLET PLUG
 - 6 - 1/4" QUICK CONNECT
 - 7 - SEE JUNCTION BOX SCHEMATIC
 - 8 - 1/4" QUICK CONNECT W/MALE PIGGYBACK

NOTE: RG-6 COAX CABLE INSTALLED WITH MALE TYPE-F CONNECTORS.

SHADED LINE=NO CONDUIT



PROPRIETARY INFORMATION THIS DRAWING CONTAINS INFORMATION FOR WHICH HUNTER MARINE CORPORATION HAS PROPRIETARY RIGHTS.



HUNTER 49

DRAWING TITLE:

DC HULL HARNESS

DRAWN BY: JLK DATE: 14-Aug-06 SHEET 2 OF 3

SCALE: HUNTER PART NO. TBD REVISION: DRAW #

PART 1, PAGE 2