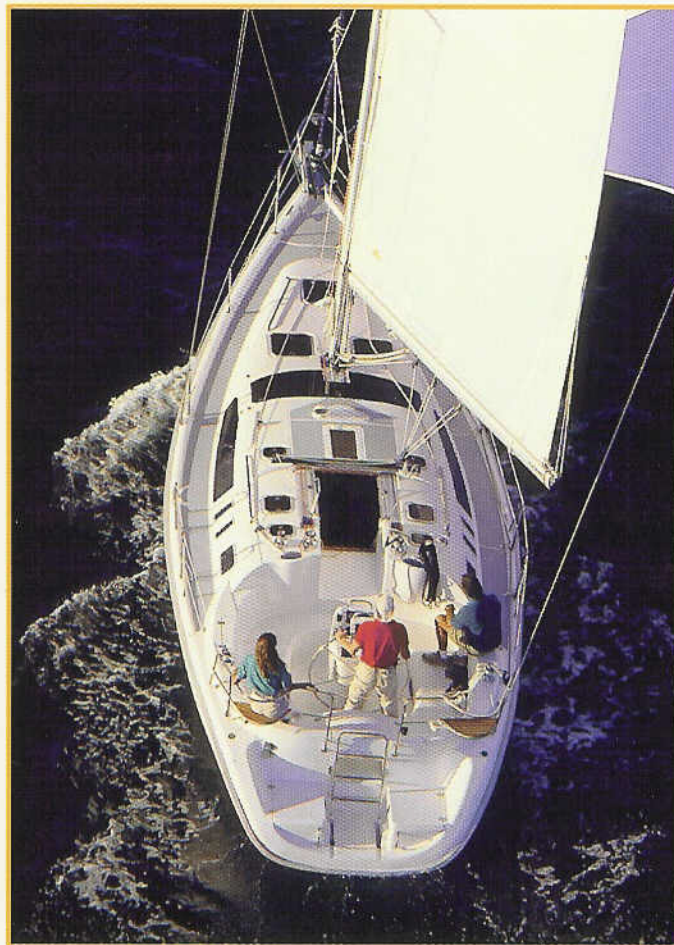
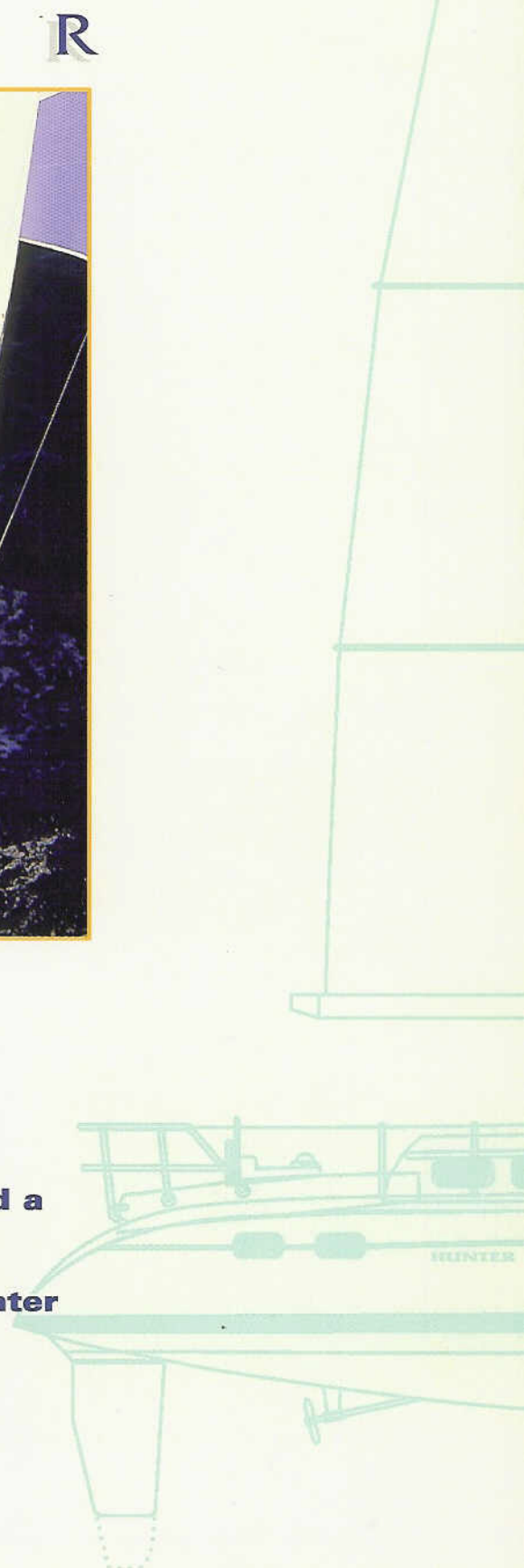


H U N T E R



Superior quality,
Surprising performance and a
Superb layout make the Hunter
376 the perfect choice.



H U N T E R

HUNTER



The Hunter 376 is truly exceptional. Never before has there been a 37 footer that has the interior of a 40 and the price of a 35. One step aboard the 376 and you will see the largest, best designed cockpit afloat today. By extending the

coaming out to the gunnels and angling the backrest, this oval shaped cockpit boasts more room, more comfort, and the most user friendly console on the market today.

Innovation has been the Hunter trademark and the

376 is the culmination of years of experience. The standard rig, for example, is a direct descendent of the B&R design that successfully powered Hunter's Child around the world in the recent BOC Race. Swept back spreaders, high-tech laminated chain plates, and a unique grid system spread the rig loads evenly throughout the hull without the need for a backstay. This arrangement allows for a more powerful mainsail with a large roach and a smaller jib making sail handling much easier. You

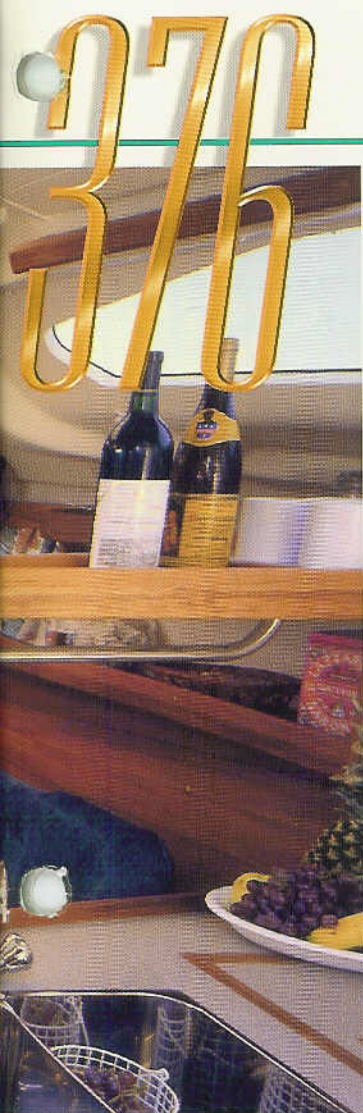
can also order the optional in mast furling system to really make cruising simple and easy.

The uncluttered deck from the hinged boarding step to the flush anchor locker allows for a quick and safe passage, but Hunter takes it a step further by running all the rigging to the safety of the cockpit. Everything is positioned for short-handed sailing, making those frantic deck drills a thing of the past.

Hunter's innovation continues down below as



Transom Storage, swim ladder and a hinged, walk through transom make it the most user friendly on the water.



stall shower are positioned for ease of access and true privacy. The forward guest stateroom even has its own vanity, perfect for cruising couples or the kids.

Living aboard and entertaining are taken seriously at Hunter. Salon seating, a true nav station and durable, yet luxurious fabrics make being aboard truly enjoyable. The full service galley with Corian® counters, three burner range with oven, stainless sinks, and dual iceboxes, not to mention a microwave and even dishware will please any family.

Any builder can create a floating condo, but at Hunter, performance counts. That's why you have a choice of keels, shoal draft or deep keel. Either one will provide the stability you need to harness the powerful rig. The slippery hull design will point, run or reach with surprising agility and power. So come aboard today and really see why **"Hunter Goes the Distance"**.



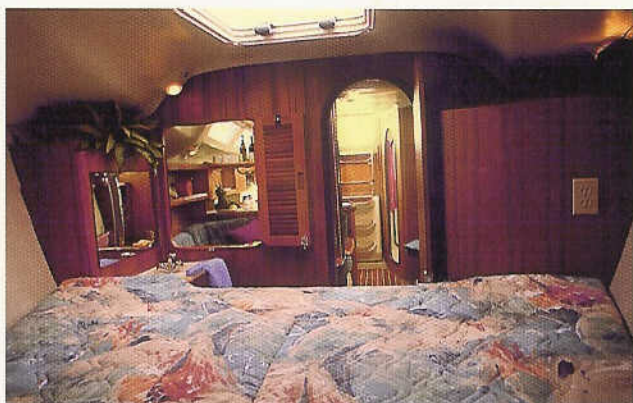
Innovative engineering allows for increased headroom in the spacious aft cabin.



well. You will be impressed by the vast amount of natural lighting and screened ventilation offered throughout the 376. Accommodations like this are usually found in boats much larger. Compare the increased headroom and storage in the aft stateroom (Tri-cabin option available). A dual access head and separate



A galley that works as well as it looks. Everything is close at hand, but laid out to extend working space and ease of clean-up.



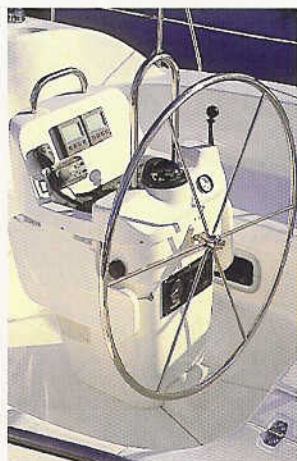
Forward guest V-berth includes a separate vanity, real privacy and plenty of ventilation.



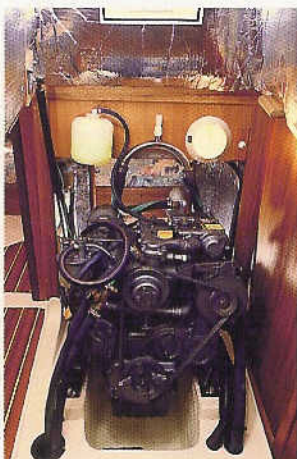
A full fiberglass head with shower stall, marine head and oversize vanity is truly functional as well as easy to maintain.



A molded fiberglass engine box provides superior insulation for both sound and heat.



Ergonomics at Work - a custom console that includes electronics, pedestal guards, engine instrumentation, drop leaf table and even drink holders.



This innovative design also allows 360° engine access for easy maintenance.

While everyone else was complaining about the high cost of marine hardware and accessories, Hunter was doing something about it. The Hunter Cruise Pac® was developed to make all the accessories and hardware you need standard equipment. We buy top-quality gear in very large quantities. The result? Equally large savings. The Hunter 376 Cruise Pac® isn't just sails, winches, and running rigging - it's things like an anchor, fire extinguisher, running lights, life jackets - even a copy of the "Basic Cruising Manual" by U.S. Sailing. We invite you to compare the Standard Equipment list below with that of any other manufacturer. You'll discover that Hunter is going the distance for you with more - and better gear. For less.

RIGGING:

Full batten, large roach mainsail
w/flaking system
110% furling jib
Furling system
Mainsail cover
Mainsheet traveler
Mainsheet system
Single line reefing (2)
Internal halyards led to cockpit
(2) sets quad line stoppers and organizers
(4) two speed self-tailing winches
B&R anodized fractional rig
Inboard jib track w/cars
Windex wind vane

ELECTRONICS:

VHF radio w/stainless antenna
Digital knotmeter w/log
Digital depthsounder w/alarm
AM/FM stereo w/CD and 4 speakers

DECK/HULL:

Bow pulpit
Stainless stern rail, with seats
Double lifelines w/gates
Stainless handrails
Windshield w/cover
Two-tone non-skid deck
Anchor well
Stainless stem fitting w/dual anchor rollers
(4) cockpit/transom storage lockers
Integrated swim platform w/swim ladder
(2) Dorade vents
(9) opening hatches w/screens
(7) opening ports w/screens
(7) fixed hull ports
Through-bolted hull/deck joint
One piece continuous rub rail
(4) dock cleats
(2) spring cleats
Bulb-wing keel (Optional fin keel)

COCKPIT:

Integrated wheel console includes:
folding cockpit table, S/S guard (2), drink
holders, lighted compass, storage, wheel
brake and single lever engine control
Walk-through transom
Hinged helmsman seat
Wrap-around coamings
Halyard stowage wells
Hot/cold cockpit shower
Manual bilge pump

ELECTRICAL:

Dockside power w/cord
Multiple AC outlets in cabin
AC/DC switch panel
Dual 12v battery switch
Battery charger

Built-in solar panel
Electric automatic bilge pump
Running lights w/steaming and anchor light
Cabin lighting
Cabin fans
Indirect lighting in headliner
Tank gauges for holding tank, water tank,
and fuel tank

CABIN:

Removable table at port side settee
Selected hardwood trim
Teak and holly cabin sole
Cabin curtains
Fully enclosed head w/shower
Molded vanity w/mirror in forecabin
35 gal. (130 l) holding tank
Hot/cold pressure water
(3) hanging lockers, cedar lined
Navigator's station
Private aft cabin
Private forward cabin
Dinette converts to double berth

GALLEY:

Corian® countertops
Plates, Bowls and mugs (6 each)
Built in trash can
Microwave
Dual sinks
Hot/cold pressure water
Three burner, gimbaled LPG stove w/oven
75 gal. (280 l) freshwater capacity
Large, double lid, dual compartment

AUXILIARY POWER:

36 hp diesel, freshwater cooled
35 gal. (130 l) fuel tank
Hinged, insulated engine box

GENERAL SAFETY GROUP:

Anchor and line
Life jackets
Handheld Flares
Air horn
Throwable device
(2) Fire extinguishers
Emergency tiller
"Basic Cruising Manual" by U.S. Sailing

OPTIONS:

Deep keel
Double aft cabin
Air conditioning
Generator
Inverter
Refrigeration
Electric anchor winch
Electric halyard winch
In-mast furling system
Leather interior cushions

AN EMPLOYEE OWNERSHIP COMPANY

HUNTER
Marine Corporation

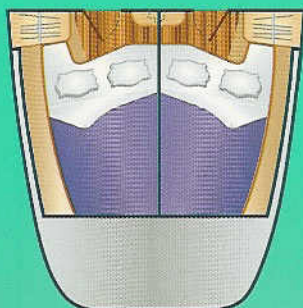
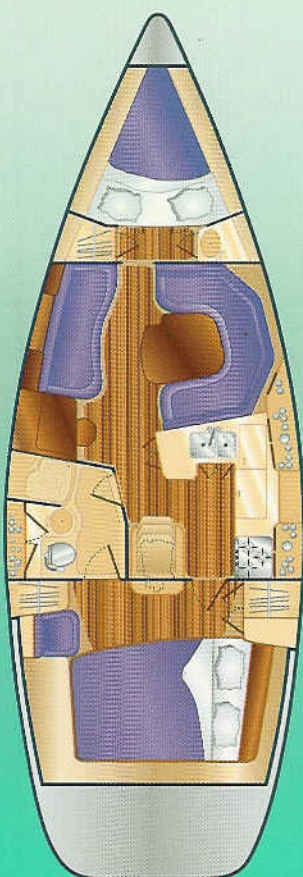


WE GO THE DISTANCE

Route 441, Post Office Box 1030, Alachua, Florida 32615
Phone (904) 462-3077 • FAX (904) 462-4077

• www.huntermarine.com • e-mail: 104341.56@compuserve.com
• NATIONAL CUSTOMER HOTLINE U.S. 1-800-771-5556

Hunter Marine reserves the right to modify or change, without notice, any materials, specifications, equipment and/or accessories. All measurements are approximate. Standard equipment may vary for products sold outside the United States.

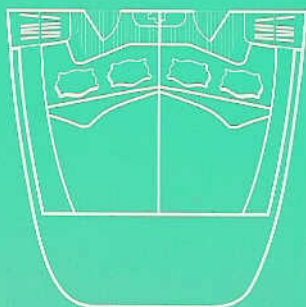
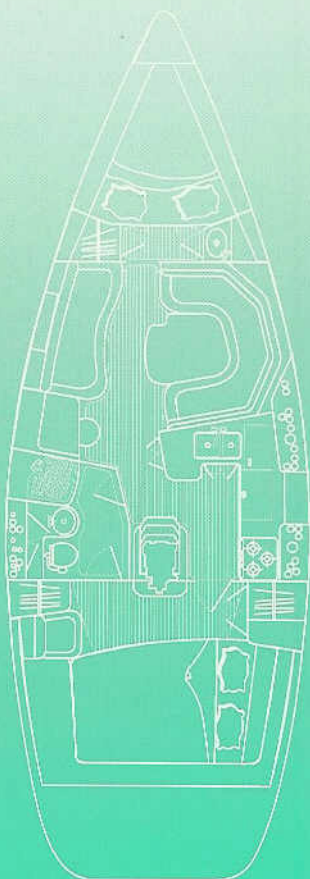


Tri-Cabin
Layout Also Available

WE GO THE DISTANCE!

The Hunter Marine Team is committed to crafting the best boat possible. To this goal we continue to develop innovative and affordable solutions to sailing's challenges, for this and the next generation of sailboats.

It is our desire that your time on the water be the basis of your fondest memories.



**Tri-Cabin
Layout Also Available**

SPECIFICATIONS *

| | | |
|-----------------------------------|-----------|--------------------------|
| LOA | 37'3" |11.35m |
| LWL | 32'0" |9.75m |
| BEAM | 12'7" |3.84m |
| DRAFT (shoal) | 5'0" |1.52m |
| (deep draft) | 6'6" |1.98m |
| DISPLACEMENT 15,000 lbs | 6,804kg | |
| BALLAST...(shoal) 5,400 lbs | 2,449kg | |
|(deep) 4,950 lbs | 2,245kg | |
| SAIL AREA (100% foretriangle) | | |
| | 684 Sq ft |63.54m ² |
| (actual) | 810 Sq ft |75.2m ² |
| I | 48'0" |14.63m |
| J | 12'11" |3.94m |
| P | 49'0" |14.94m |
| E | 15'3" |4.65m |
| MAST HT (fr dwl) | 60'1" |18.31m |
| HEADROOM | 6'6" |1.98m |

*All Measurements Approximate