

# HUNT

E

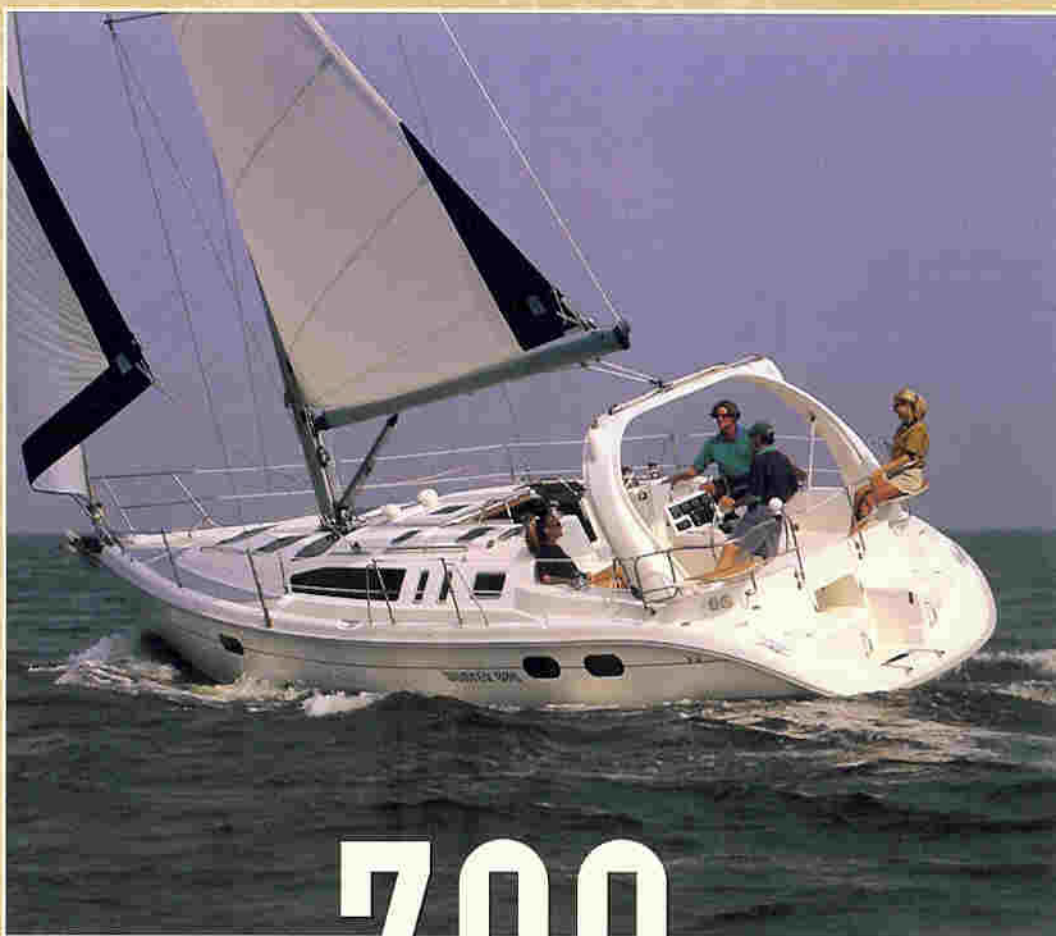
Z

I

R

A

Σ



# 380

W E G O T H E D I S T A N C E





**H**unter Marine's new 380 is an evolutionary boat that comes from the finest of innovation and consumer input Hunter has ever had. Comfort, convenience and livability is what the 380 is all about. Abundant natural light streams in from the Hunter signature windshield as well as the many fixed and screened ports; not to mention the multiple overhead hatches which also emit

a tremendous amount of fresh air. At anchor or at the dock, the placement of the ports assure you of great ventilation, and obviously, reverse cycle air and heat are an optional choice for your cruising comfort.

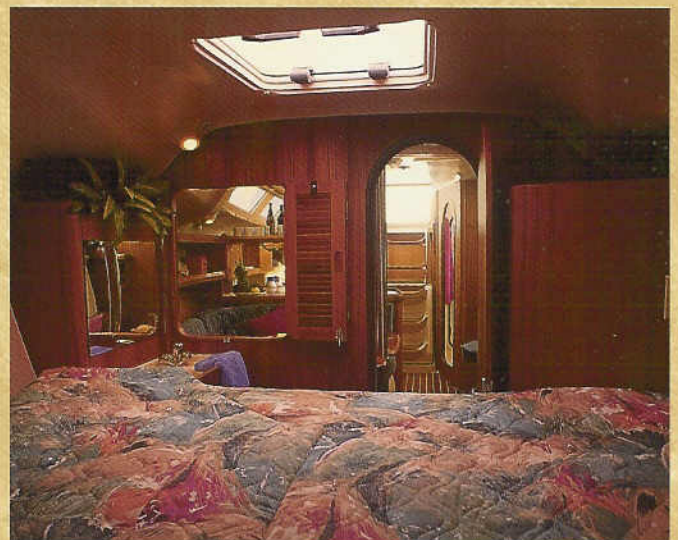
Entertaining or handling the family is easy with the enlarged salon complete with a convertible dinette and facing settee. Storage is plentiful as is electronic space





at the integrated nav-station. A Corian® covered, full-service galley comes complete right down to the dishware and any chef will adore the side-by-side ice boxes and top-loading trash bin set each side of the double basin, stainless sink.

The private forward stateroom includes an ensuite vanity with sink and storage as well as plenty of hanging



locker space and drawer storage. Aft, you'll find the master stateroom with a huge queen berth and more storage. Privacy is enhanced by the dual access head that offers a Corian® covered vanity, electric marine head and shower stall all wrapped in a complete fiberglass shell for easy cleaning and maintenance. A tri-cabin version is also available for those who want to accommodate even more





family or friends. On deck, the cockpit is designed for the comfort of the skipper and crew, not for the ease of the builder. By bringing the coaming out to the gunnels, Hunter has increased the overall space to incredible proportions to include seating for eight. A custom console with folding table leaves is perfect for those alfresco meals. Take the time to compare the

innovations, comfort, performance and factory-backed warranty with the competition and then compare the value. We know you'll be impressed.

See the new 380 at a Hunter dealer near you today and see how **"We Go The Distance"**.





Owner's Version

## SPECIFICATIONS

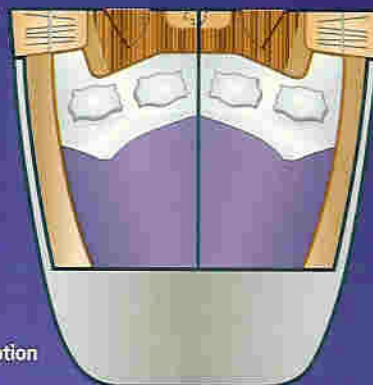
LOA .....	37'3"	11.35m
LWL .....	32'0"	9.75m
BEAM .....	12'7"	3.84m
DRAFT (shoal) .....	5'0"	1.52m
(deep) .....	6'6"	1.98m
DISP. (shoal) .....	16,000 lbs.....	7,264kg
(deep) .....	15,595 lbs.....	7,080kg
BALLAST (shoal) .....	5,900 lbs.....	2,679kg
(deep) .....	5,495 lbs.....	2,495kg
SAIL AREA		
(actual) .....	811 Sq ft .....	75.34m <sup>2</sup>
I .....	48'0"	14.63m
J .....	12'11"	3.94m
P .....	46'8"	14.22m
E .....	18'5"	5.62m
MAST HT (fr dwt) .....	59'6"	18.14m
HEADROOM .....	6'6"	1.98m
WATER CAP .....	75 gal .....	280L
HOLDING CAP .....	35 gal .....	130L
AUX. POWER-FRESHWATER COOLED		
STANDARD DIESEL .....	36 hp.....	26.8 kw
FUEL CAPACITY .....	30 gal.....	110L

\*All Measurements Approximate

## WE GO THE DISTANCE!

The Hunter Marine Team is committed to crafting the best boat possible. To this goal we continue to develop innovative and affordable solutions to sailing's challenges, for this and the next generation of sailboats. It is our desire that your time on the water be the basis of your fondest memories.

Featuring  
**MAXGUARD®**  
enduring beauty™



Tri-Cabin Option







By moving the cockpit to the gunnels, the 380 can handle a full crew for sailing or entertaining. Extra storage and a custom console are also benefits of the wider cockpit.



Taffrail seats are always the best seats in the house on a Hunter; now they even include drinkholders.



The anchor locker allows for a below-deck mounted windlass which keeps the decks clear and safe. Plenty of room for chain and rode.



Cam cleats are conveniently placed on the arch to control the overhead traveler.



The propane tank lockers are located on the transom for safety and easy access.



The optional electric halyard winch makes sail raising a snap and the integrated halyard wells keep everything organized and neat.



The custom console houses all the instruments, compass, VHF radio, engine gauges and controls with ease. Destroyer wheel and pedestal guards are precisely placed for optimum convenience and control.



The large head includes a Corian® covered vanity and shower with plenty of ventilation and light.



Mast struts and lower shrouds are placed inboard to allow for easier access forward.



A fiberglass, insulated engine box reduces engine noise and tilts up to provide great access to all service points.



The innovative arch keeps the traveler up and out of the way. It also allows for a better attachment point for the bimini top.

AN EMPLOYEE OWNERSHIP COMPANY

**HUNTER**®  
Marine Corporation  
**WE GO THE DISTANCE**

Route 441, Post Office Box 1030, Alachua, Florida 32615

Phone (904) 462-3077 • FAX (904) 462-4077

• [www.huntermarine.com](http://www.huntermarine.com) • e-mail: [huntermarine@worldnet.att.net](mailto:huntermarine@worldnet.att.net)

• NATIONAL CUSTOMER HOTLINE U.S. 1-800-771-5556

BR3800 9/98 20K

Hunter Marine reserves the right to modify or change, without notice, any materials, specifications, equipment and/or accessories. All measurements are approximate. Standard equipment may vary for products sold outside the United States.