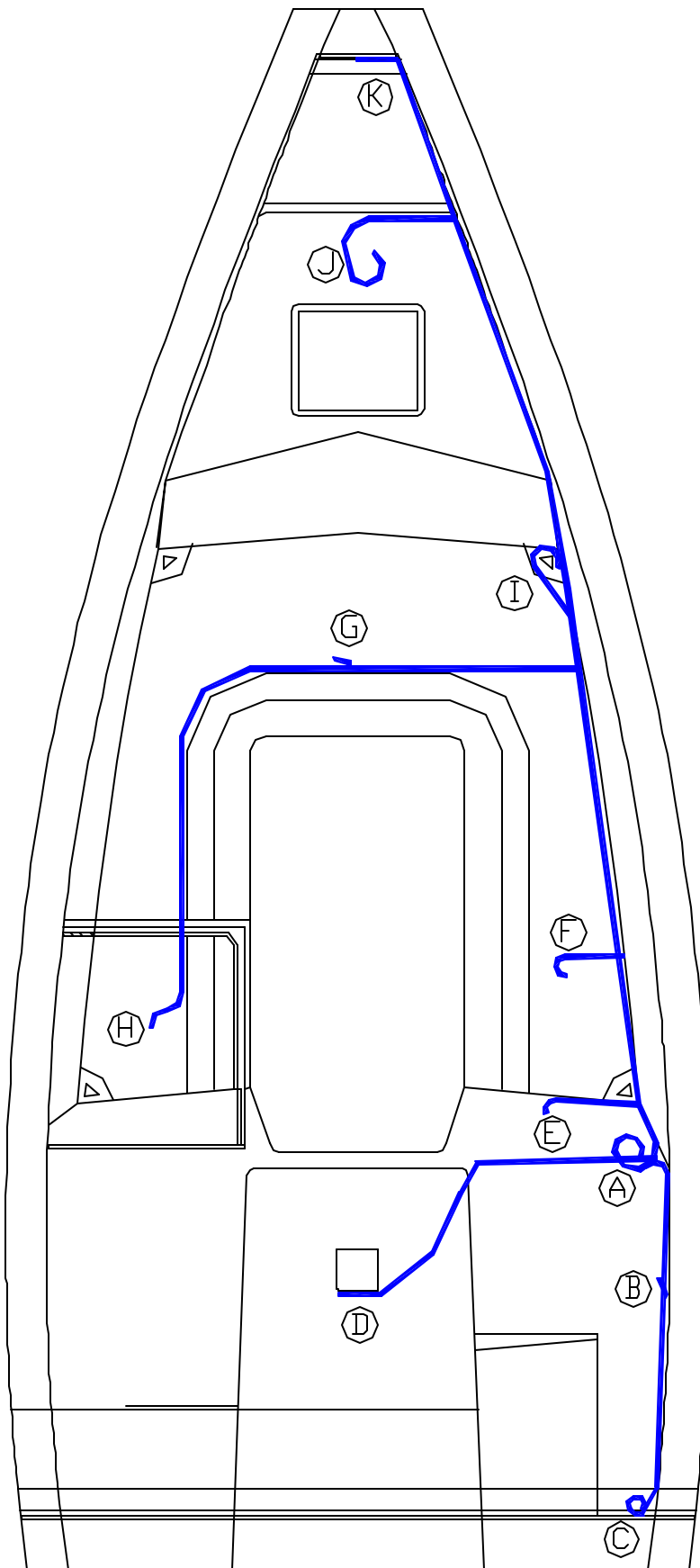


25 DECK HARNESS LAYOUT Page 1 of 6



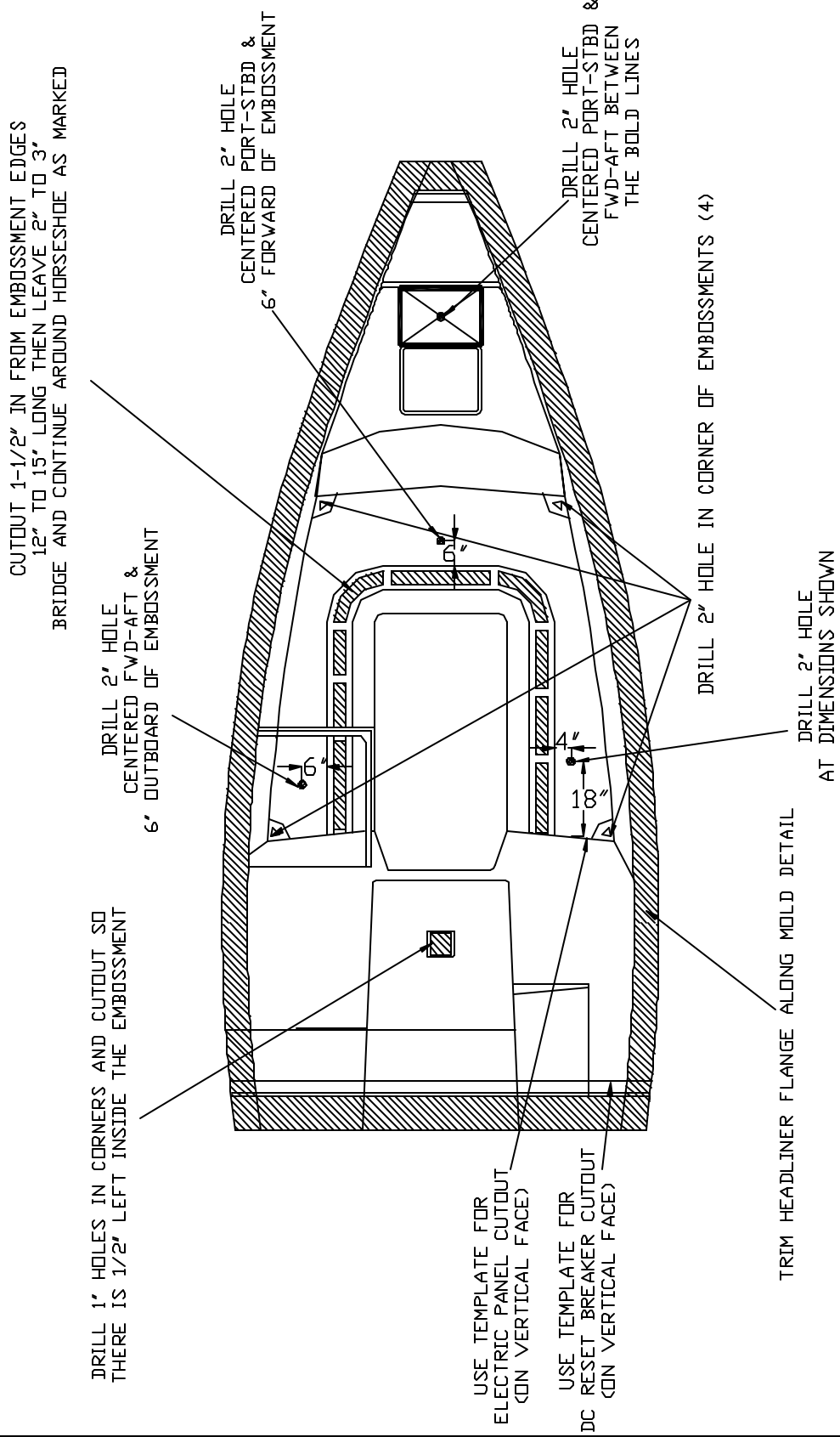
This diagram shows where the 25 deck harness goes on the 25 headliner before it is mated to the 25 deck. On the following pages are; pictures showing these locations for clarification and a more detailed description, the wiring harness listing what the wires are for & showing the same letters that are on this diagram, the 25 deck headliner cutout diagram so you will know exactly where to put wires "F", "G", "H" & "J".

"B" is an optional aft CO monitor wire that is not being used at this time. No hole will be drilled into the headliner for this wire to come through.

25 DECK HARNESS LAYOUT Page 3 of 6

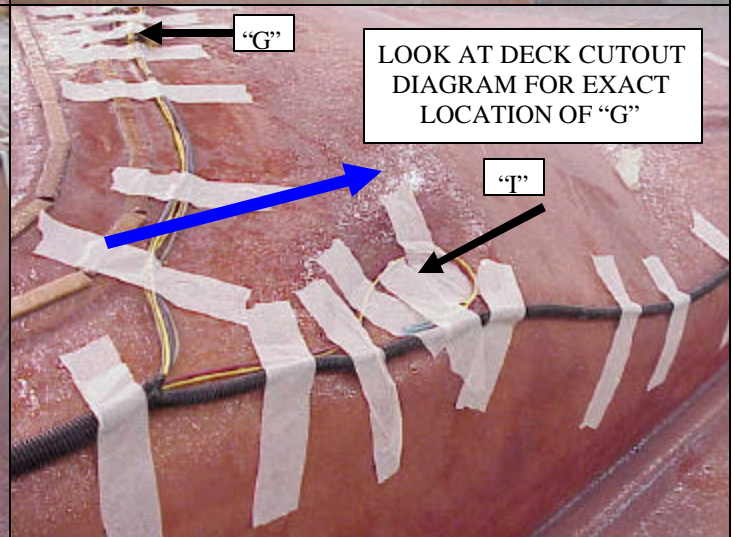
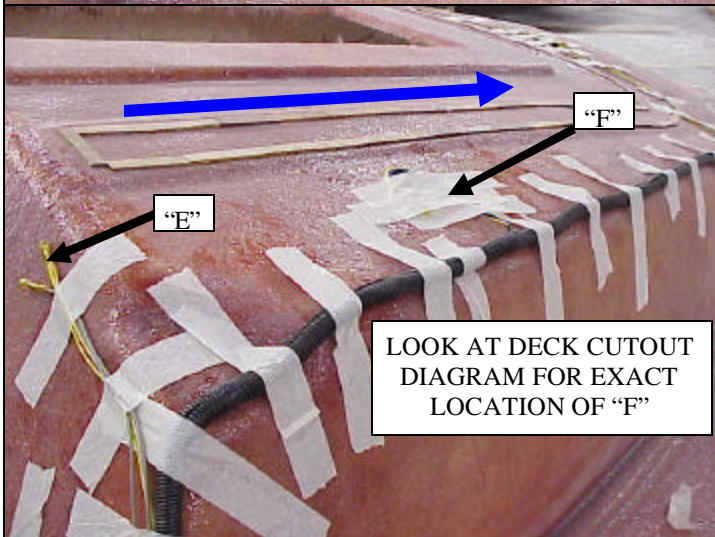
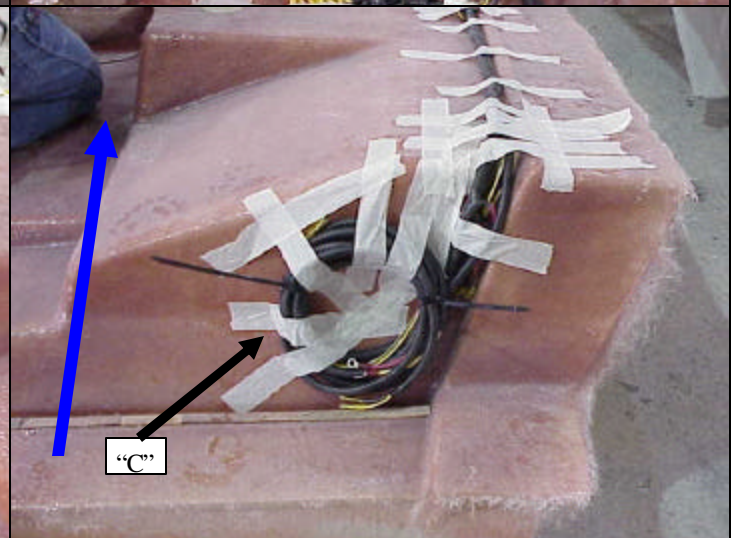
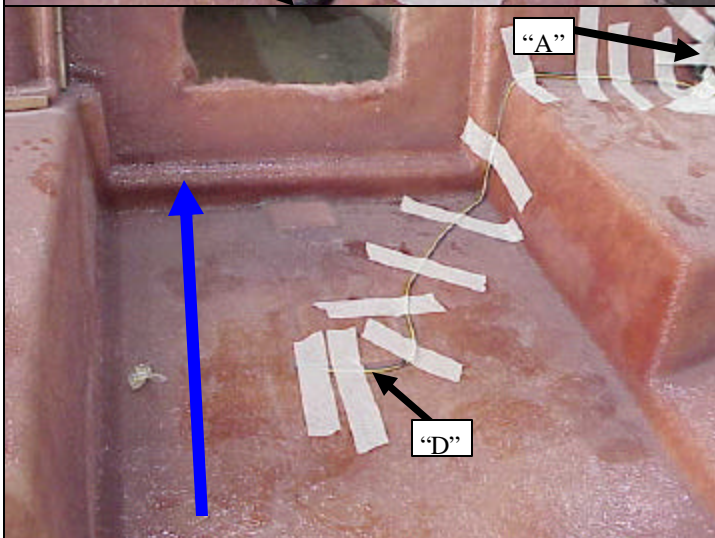
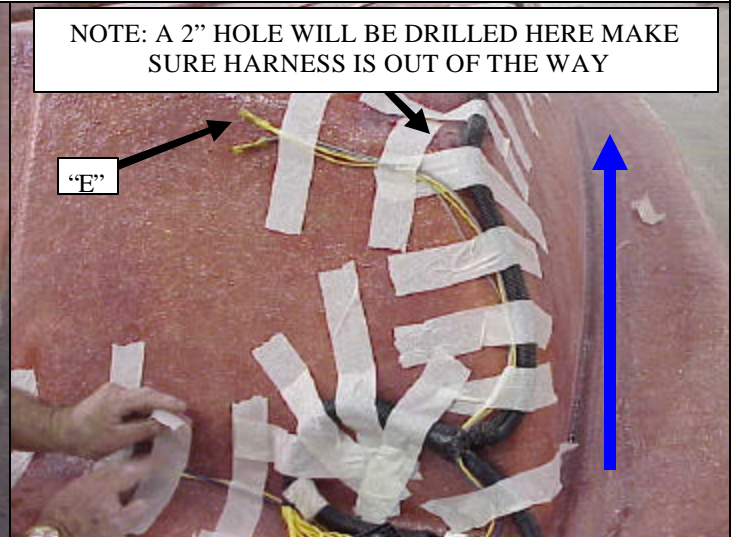
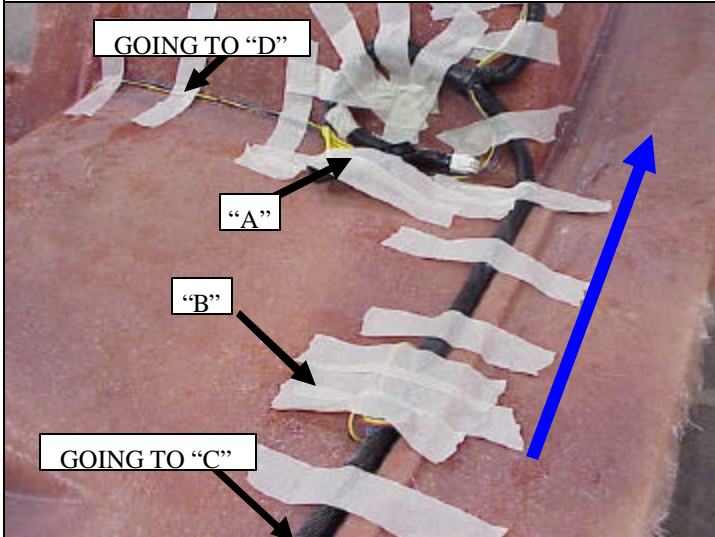
| HUNTER 25 DC DECK HARNESS | | | | 12/3/2004 |
|---------------------------|-------|-------------|--------|---------------------------|
| WIRE# | GAUGE | COLOR | LENGTH | FUNCTION |
| 1 | 16 | BLUE | 210" | GALLEY&FWD LIGHTS |
| 2 | 16 | YELLOW | 210" | GALLEY&FWD LIGHTS NEG. |
| 3 | 16 | BLUE | 244" | M-C&PORT LIGHTS |
| 4 | 16 | YELLOW | 244" | M-C&PORT LIGHTS NEG. |
| 5 | 16 | BLUE | 91" | AFT CABIN LIGHTS |
| 6 | 16 | YELLOW | 88" | AFT CABIN LIGHTS NEG. |
| 7 | 16 | GRAY/WHITE | 215" | BOW LIGHT |
| 8 | 16 | YELLOW | 212" | BOW LIGHT NEG. |
| 9 | 16 | GRAY/YELLOW | 249" | STERN LT |
| 10 | 16 | YELLOW | 246" | STERN LT NEG. |
| 11 | 16 | GRAY/RED | 143" | ANCHOR LT |
| 12 | 16 | GRAY/GREEN | 143" | STEAMING LT |
| 13 | 16 | YELLOW | 140" | MAST LTS NEG. |
| 14 | 16 | RED/BLUE | 123" | FWD CO ALARM |
| 15 | 16 | YELLOW | 120" | FWD CO ALARM NEG. |
| 16 | 16 | RED/BLUE | 67" | AFT CO ALARM |
| 17 | 16 | YELLOW | 64" | AFT CO ALARM NEG. |
| 18 | 12 | BROWN/ORG | 134" | BILGE PUMP(AUTO) |
| 19 | 12 | BROWN/RED | 207" | BILGE PUMP(MANUAL) |
| 20 | 12 | YELLOW | 204" | BILGE PUMP NEG. |
| 21 | 8 | RED | 76" | PANEL POWER |
| 22 | 8 | YELLOW | 146" | PANEL NEG. |
| 23 | 16 | YELLOW | 15" | BILGE PUMP INDICATOR NEG. |
| 24 | 12 | TAN | 85" | BILGE PUMP POWER |
| 25 | 8 | ORANGE/RED | 82" | DC PANEL |
| 26 | 16 | BLUE | 3" | FWD CABIN LIGHTS |

25 HEADLINER CUTOUTS

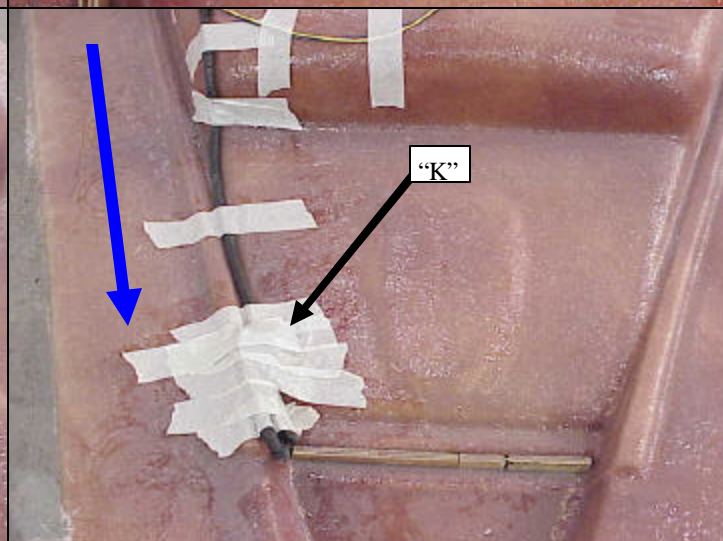
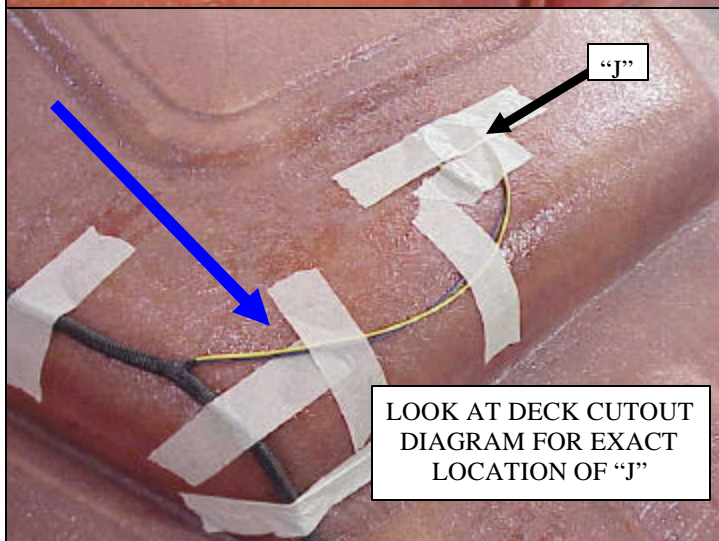
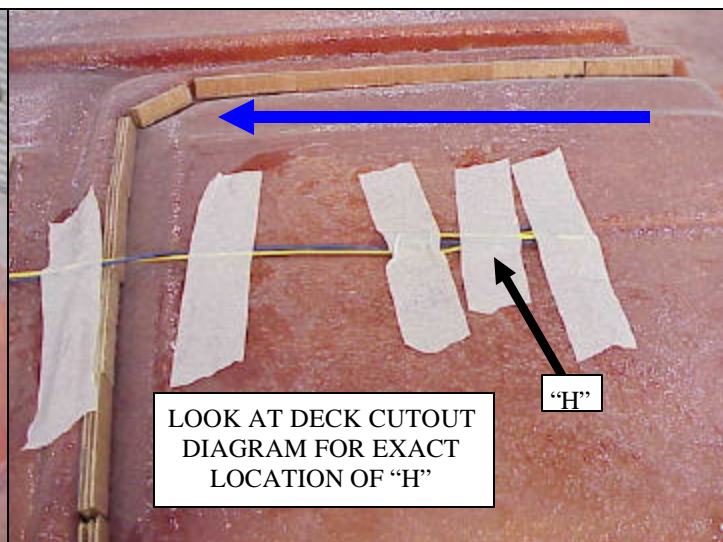
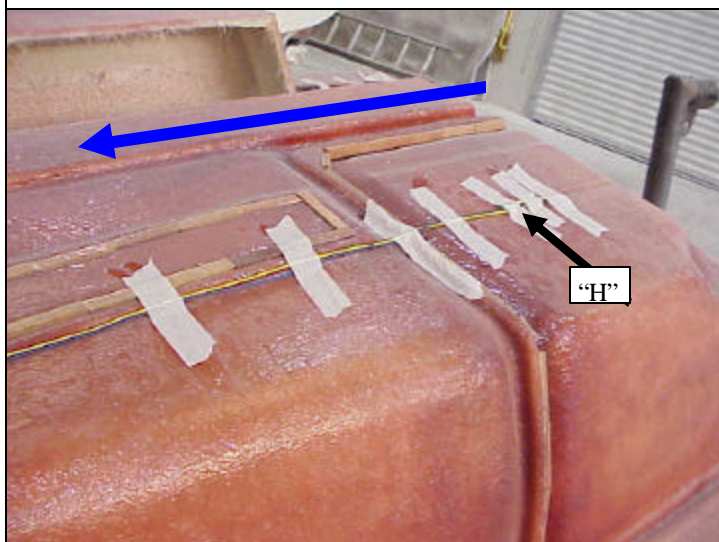


25 DECK HARNESS LAYOUT Page 5 of 6

NOTE: BLUE ARROW ON ALL PICTURES POINT FORWARD



25 DECK HARNESS LAYOUT Page 6 of 6



BILGE PUMP AND BATTERY INSTALLATION



LOCATION AND INSTALLATION OF BILGE PUMP:

1. The location of the bilge pump is under the floor in the keel sump area immediately forward of the companionway steps.
2. Make the electrical connections to the pump and switch with the butt connectors that are attached to the harness. Refer to drawing number 258052B, entitled ELECTRIC BILGE PUMP SCHEMATIC.
3. Insure that the crimp is tight on both the harness and at the pump switch leads.
4. Heat shrink the butt connector insulation with a heat gun.
5. Neatly enclose the wires in conduit and tie clear of the keel sump
6. Connect the pump out hose to the bilge pump.
7. Connect the pump out hose to the deck through hull located in the starboard aft cabin.



HARDWARE:

Float Switch
Bilge Pump

FASTENERS:

Hose Clamps
8 x 1" S/S P/H Screws



LOCATION AND INSTALLATION OF BATTERY:

1. The location of the battery is behind the aft berth bulkhead /curtain on the starboard side.
2. Install the battery box strap hold down brackets and strap on the battery platform.
3. Secure the battery box with the strap provided.
4. Insure that the battery connection leads in the harness are of sufficient length to make the connection at the battery when installed by the dealer.



HARDWARE:

Battery Box and Strap

FASTENERS:

8 x 3/4" S/S P/H Screws

LOCATION AND INSTALLATION OF CABIN LIGHTING



LOCATION AND INSTALLATION OF CABIN LIGHTING:

1. The location of the cabin lights are as follows: one in the v-berth forward of the main hatch, one in the main salon forward of the companionway slider hatch, one in the starboard main salon over the galley, one in the head centered between the bulkheads, and one in the aft cabin centered under the cockpit floor in the U-Bolt access cover. Refer to drawing number 258054A, entitled 12V.D.C. WIRING LAYOUT.
2. Make the electrical connections to the lights with the butt connectors that are attached to the harness. Insure that the crimp is tight on both the harness and at the light leads.
3. Heat shrink the butt connector insulation with a heat gun.
4. Pop off the plastic dome.
5. Hold light up to the head liner.
6. Drill holes using an 1/8" drill bit.
7. Secure using #8 x 3/4" P/H.
8. Install the CO Detector, Make the connections following the same procedure as for the lights.
9. Install the fire alarm. (Battery Powered)

HARDWARE:

Dome Lights
CO Detector
Fire Alarm

FASTENERS:

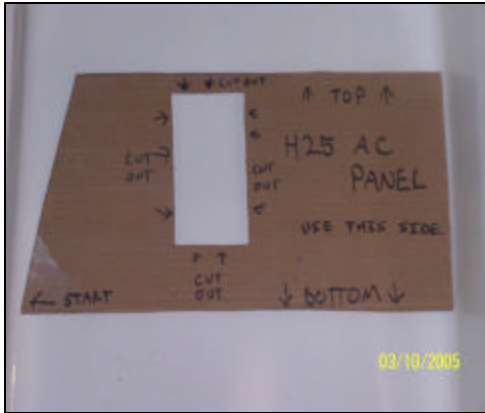
8 x 1/2" S/S P/H Screws



LOCATION AND INSTALLATION OF THE DC SWITCH MAIN BREAKER PANEL

LOCATION AND INSTALLATION OF THE DC SWITCH PANEL:

1. The cutout for the DC switch panel is located on the starboard aft side of the main cabin above the galley. The headliner should be cut at this stage, if not use the template to mark out and make the necessary cuts, being mindful of the harness wires so as not to cut them.
2. The harness ends should be visible and readily accessible, pull them out of the cut out.
3. Inspect the ground wire buss bar and insure that all connections are secure.
4. Plug the harness wires into the mating plugs on the electrical panel.
5. After connection is made, install the panel over the cut out. Insure that the panel is not crooked. Secure with 4 ea. # 8 x 3/4" Black Oval Heads.

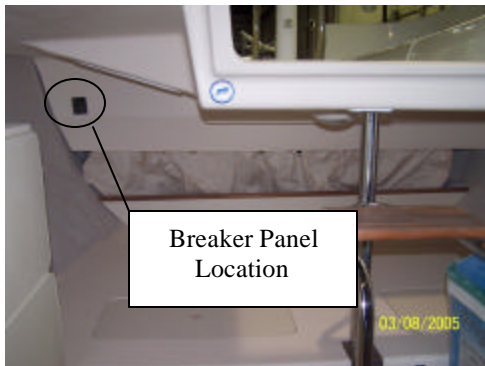


HARDWARE:
DC Panel

FASTENERS:
4 EA. # 8 x 3/4" Black Oval Heads

LOCATION AND INSTALLATION OF THE DC MAIN BREAKER PANEL:

1. The cutout for the DC main breaker panel is located on the starboard aft side of the aft cabin headliner. The headliner should be cut at this stage, if not use the template to mark out and make the necessary cuts, being mindful of the harness wires so as not to cut them.
2. The harness ends should be visible and readily accessible, pull them out of the cut out.
3. Plug the harness wires into the mating plugs on the main breaker panel. Make the connections for the bilge pump reset.
4. After connection is made, install the panel over the cut out. Insure that the panel is not crooked. Secure with 4 ea. # 8 x 3/4" Black Oval Heads.



HARDWARE:
DC Main Breaker Panel

FASTENERS:
4 EA. # 8 x 3/4" Black Oval Heads

MAST PLUG AND DECK LIGHTS INSTALLATION

LOCATION AND INSTALLATION OF MAST PLUG:

1. The mast plug is located on the starboard side of the mast step. The molded deck embossment has a drill point locating dimple, drill this with a 3/8" drill bit.
2. Align the plug over the hole and mark for the mounting screw holes. Drill with a 3/64" drill bit.
3. From inside the boat, feed the mast wires in the deck harness out through the hole in the deck.
4. Strip the wire ends and install to plug.
5. Clean the holes free of debris and caulk with 3M UV Fast Cure Sealant. Insure that the mast plug wires have sufficient sealant around them so as not to leak water into the interior of the boat when exposed to the weather.
6. Place the plug into position on the deck (carefully feed the wires back through the hole in the deck) and secure with three #6 x 1/2" S/S P/H Screws.
7. Clean up[excess caulk.

HARDWARE:
Mast Plug

FASTENERS:
#6 x 1/2" S/S P/H Screws

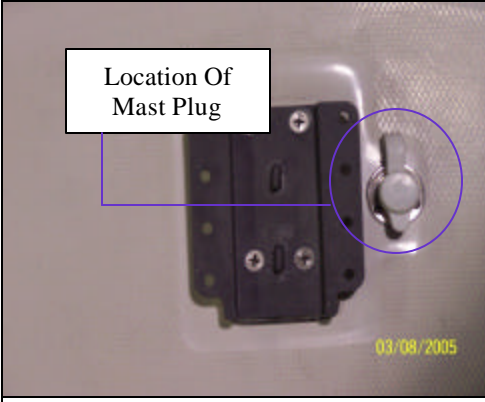
LOCATION AND INSTALLATION OF DECK LIGHTS:

1. The bow light is located on the forward most point of the bow rail.
2. Feed the bow light wires through the forward bow rail leg to the light mounting plate.
3. Remove the light lens and make the connections (Spade Slip on) inside the light.
4. Mount the light to the bow rail with #10-24 x 1" Truss Head bolts, #10-24 lock nuts, #10 flat washer.
5. The nuts will be on the outside of the bow light.
6. Attach light bulb.
7. Attach bow light lens.

1. The stern light is located on the starboard aft transom face, Drill a 3/8" hole for the stern light wires to exit the aft transom face.
2. Remove the stern light lens and hold the light in position over the 3/8" hole.
3. Mark the mounting holes and drill with an 1/8" drill bit.
4. Clean the holes free of debris and caulk with 3M UV Fast Cure Sealant. Insure that the mast plug wires have sufficient sealant around them so as not to leak water into the interior of the boat when exposed to the weather.
5. Feed the stern light wires through the hole in the transom and back of stern light.
6. Secure the stern light #8 x 1/2" screws.
7. Make the connections (Spade Slip on) inside the light.
8. Attach light bulb.
9. Attach stern light lens.
10. Clean excess caulk

HARDWARE:
Bow Light
Stern Light

FASTENERS:
#10-24 x 1" Truss Head bolts
#10-24 lock nuts
#10 flat washer
#8 x 1/2" screws



STEERING PEDESTAL INSTALLATION

STEERING PEDESTAL:

1. Position the steering pedestal in the molded detail on the cockpit floor.
2. Mark the mounting holes.
3. Drill with 1/2" drill bit. Drill the hole for the compass light wire with a 1/4" drill bit in the forward face of the steering well detail.
4. Dremel holes to expose raw glass on the edge of each hole.
5. Clean the holes free of debris and caulk with 3M UV Fast Cure Sealant.
6. Install pedestal using bolts provided by manufacturer.
7. Back nut the bolts from inside the boat with four 1/2" lock washers and four a 1/2" hex nuts.
8. Feed the compass light wire through the previously drilled hole. Make the connections with the deck harness. Insure that the compass light wires have sufficient sealant around them so as not to leak water into the interior of the boat when exposed to the weather.
9. Clean excess caulk.
10. Install drag link to pedestal tiller arm with shoulder bolt provided by manufacturer.
11. Install lock holders in pedestal.
12. Install compass (OPTION) and secure wire connections.
13. Install Stainless Steel grab handle provided by manufacturer.

HARDWARE:

1 EA Steering Pedestal

FASTENERS:

4 EA 1/2" lock washers
 4 EA 1/2" hex nuts.

