

Hunter 25 Sea Hood Assembly

Cabinet Shop

Installation Procedure:

Processing Time:

Install rubber bumpers to bottom teak pull.

1. Measure 1-3/4" from fwd edge of bottom pull place a 3/4" x 1/2" rubber bumper and center of fwd side of bottom pull then mark mounting hole location.
2. Use $\phi 3/32$ drill bit to drill 2 pilot holes x 1/4" deep on the 2 marked locations.
3. Secure 2 pieces x $\phi 1/2$ " x 3/4" height rubber bumpers to mounting holes use #6 x 5/8" flat head wood screws.

Install rubber bumpers to teak track.

1. From bottom face of teak track measure from aft edge of notch 1" afterward will be the rubber bumper mounting location then mark the location.
2. Use $\phi 3/32$ drill bit to drill a pilot hole x 1/4" deep on mark location.
3. Secure $\phi 1/2$ " x 3/4" height rubber bumper to mounting holes use #6 x 5/8" flat head wood screws.
4. Do same procedure to install rubber bumper on the other teak sliding track.

Sanding Track edge and corner :

1. Sanding fwd edge of teak track in order to fit fwd inside corner of fiberglass sea hood.
2. Sanding aft edge of teak track in order to fit aft inside corner of fiberglass sea hood.
3. Do the same procedure to the other teak sliding track.
4. Cut 1" long and 3/8" deep notch from aft end of teak track 2-1/2" forward (this is for installation of hood support rod)

Install top and bottom teak pull to plexiglass.

1. 4 pre drill counter sink through holes for #10 wood screws comes with plexiglass
2. Top teak pull is 33" in length and its flat side will contact plexiglass.
3. Place the top teak pull with its flat bottom face contact to plexiglass upper face aft row countersink through holes and ensure that both teak wood side edge to both plexiglass sliding edge remain same distance so the top pull will locates at center of the plexiglass.
4. Mark mounting hole location from bottom face countersink through holes of plexiglass.
5. Use C-7 drill bit to drill 7/8" deep pilot holes on those mark locations.
6. Use 733 glass/metal sealant to caulk on mounting holes then use 4 pieces #10 x 1-1/4" long flat head wood screws to secure top pull to plexiglass.
7. Bottom teak pull will be mounted on aft 2nd row countersink through holes from upper plexiglass surface.
8. Bottom teak pull has 2 rubber bumpers that should facing fwd and teak wood flat side contact bottom face of plexiglass.
9. Do same as top pull mounting procedure on bottom pull.

Hunter 25 Sea Hood Assembly

Cabinet Shop

Install teak back stop to plexiglass.

1. 4 pre drill counter sink through holes for #10 wood screws comes with plexiglass
2. Back teak stop is 35-3/8" in length and its flat side will contact fwd upper face of plexiglass.
3. Place the back teak stop with its flat bottom face contact to plexiglass upper face fwd row countersink through holes then mark mounting hole location from bottom face countersink through holes.
4. Use C-7 drill bit to drill 5/8" deep pilot holes on those mark locations.
5. Use 733 glass/metal sealant to caulk on flat side face of teak back stop.
6. Use 733 glass/metal sealant to caulk on mounting holes then use 4 pieces #10 x 1" long flat head wood screws to secure teak back stop to plexiglass from bottom.

Install hinges to fiberglass hood:

1. Place stainless hinge onto middle of top section of hood hinge embossment and let the pin hanging enough at hood fwd edge so counter hinge plate can attach on fwd vertical face.
2. Mark mounting locations on hinge embossment. (2 hinges are required)
3. Use \varnothing 3/16 drill bit to drill pilot holes in the hood hinge embossment (this is for #10-24 through bolt)
4. Clean up mounting hole location, then use marine sealant 795 to caulk on mounting holes.
5. Secure hinge to fiberglass sea hood use #10-24 x 1-1/2" long through bolts and nuts.
6. Break off protruding fasteners using vice grips or channel locks.
7. Sea hood hinge installation complete.
8. Place and match plexiglass to sea hood then mark beveled edge location for both hinges.

Sliding hatch assembly:

1. Flip fiberglass sea hood bottom up.
2. Match and fit hatch, hatch assembly, and teak tracks to fiberglass sea hood. And try to operate the sliding hatch to see if the assembly is working properly. (for teak track, notch should facing outward)
3. If the hatch is not easy to slide, you might need to table saw to sanding some necessary sliding surface down.
4. Teak track to fiberglass sea hood mounting location, drill center locates 3" afterward from fwd sea hood edge and 3" forwards from aft sea hood edge then 2 fasteners will be at even place between fwd and aft mounting holes.
5. Mark teak track mounting locations (both sides).
6. Use \varnothing 5/32 drill bit and counter sunk head (adjust drill bit length 1" from counter sunk head) to drill mounting holes on both sides of fiberglass sea hood, so there will be 4 mounting holes on each side.
7. Apply 733 glass & metal sealant on all mounting holes then use #10 x 1-1/4" flat head wood screws to secure teak track to fiberglass sea hood, so sliding hatch will work properly.
8. Clean up excess caulk from fiberglass sea hood.

Sea hood support rod installation:

1. Place stainless support rods into slot with its through hole end locates at center of teak track notch so support .
2. Use \varnothing 5/32 drill bit and counter sunk head to drill support rod's mounting location.
3. Use #10 x 1-1/4" flat head wood screw to hold support between fiberglass and slide track (both sides).
4. Try to operate support rods (the rod should be able to easily flip up and should be able to be stow in teak track gap.)
5. Installation complete.

Hunter 25 Sea Hood Assembly Cabinet Shop

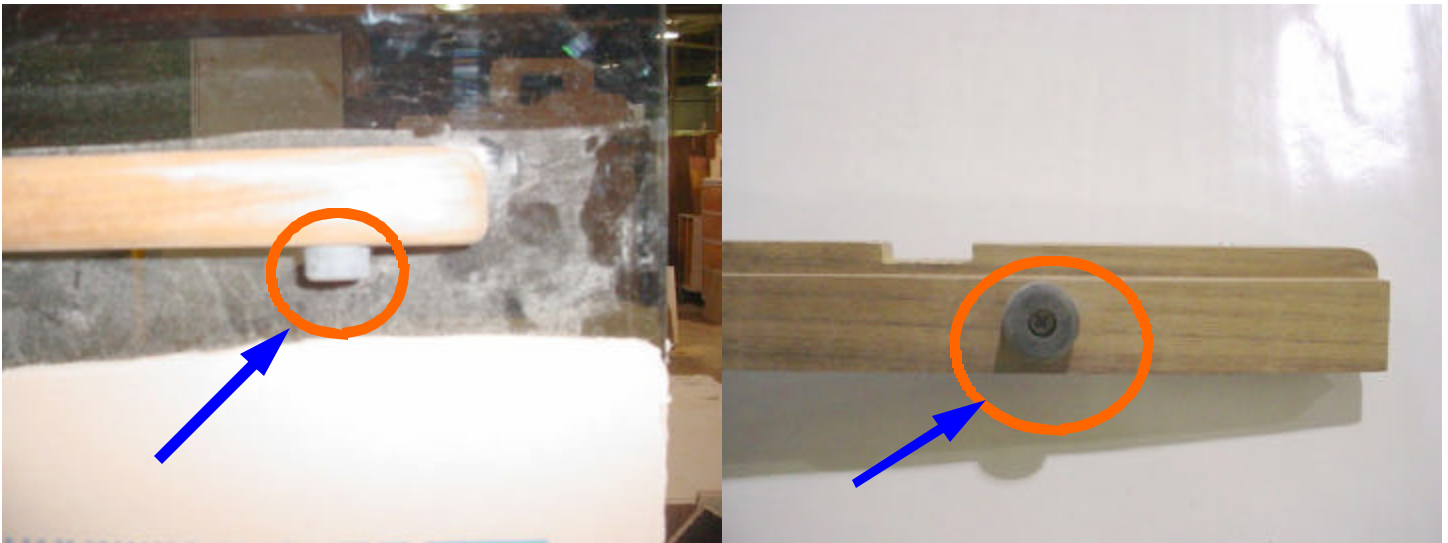


Fig 1. Use $\varnothing 3/32$ drill bit to drill a pilot hole x $1/4''$ deep on mark location. Secure $\varnothing 1/2''$ x $3/4''$ height rubber bumper to mounting holes use #6 x $5/8''$ flat head wood screws. Do same procedure to install rubber bumper on teak sliding track and back stop.



Fig 2. Sanding fwd edge of teak track in order to fit fwd inside corner of fiberglass sea hood. Sanding aft edge of teak track in order to fit aft inside corner of fiberglass sea hood. Do the same procedure to the other teak sliding track.



Caulk on mounting hole use designated marine sealant

Fig 3.

1. Mark mounting hole location from bottom face countersink through holes of plexiglass.
2. Use C-7 drill bit to drill $7/8''$ deep pilot holes on those mark locations.
3. Use 733 glass/metal sealant to caulk on mounting holes. then use 4 pieces #10 x $1-1/4''$ long flat head wood screws to secure top pull to plexiglass.

Hunter 25 Sea Hood Assembly Cabinet Shop



Fig 4. Use 4 pieces #10 x 1-1/4" long flat head wood screws to hold top pull to plexiglass



Fig 5. Side view of installation complete top teak pull and bottom pull

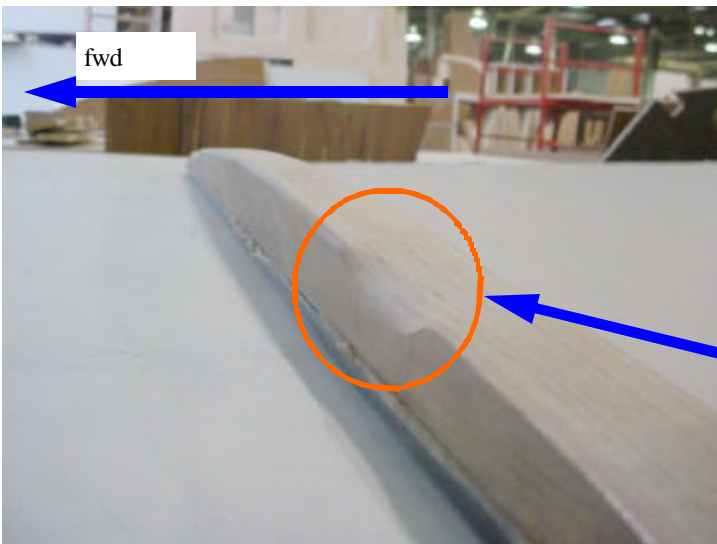


Fig 6.

Place the back teak stop with its flat bottom face contact to plexiglass upper face fwd row countersink through holes then mark mounting hole location from bottom face countersink through holes. Use C-7 drill bit to drill 5/8" deep pilot holes on those mark locations. Use 733 glass/metal sealant to caulk on flat side face of teak back stop. Use 733 glass/metal sealant to caulk on mounting holes then use 4 pieces #10 x 1" long flat head wood screws to secure teak back stop to plexiglass from bottom.

Hunter 25 Sea Hood Assembly Cabinet Shop

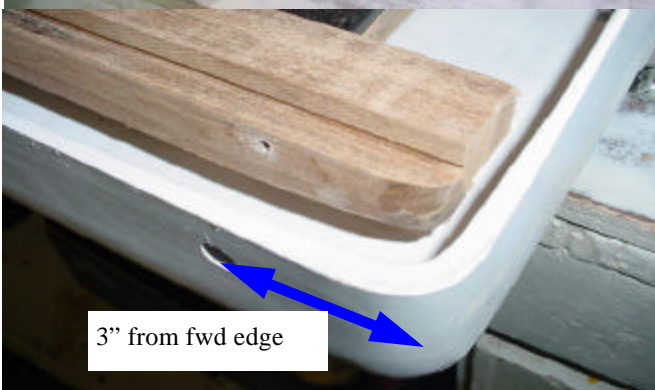
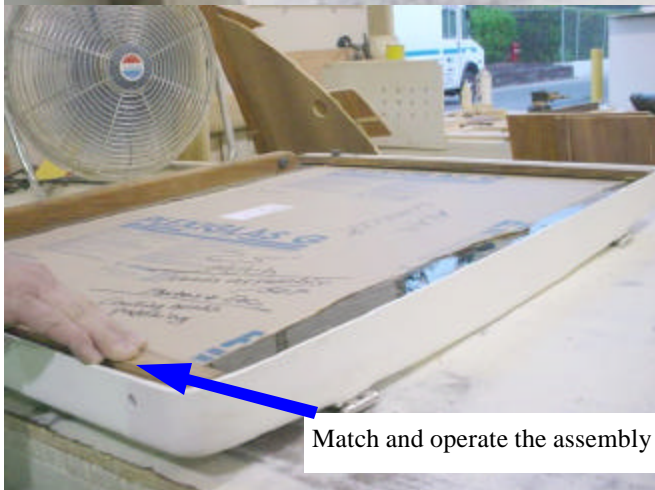
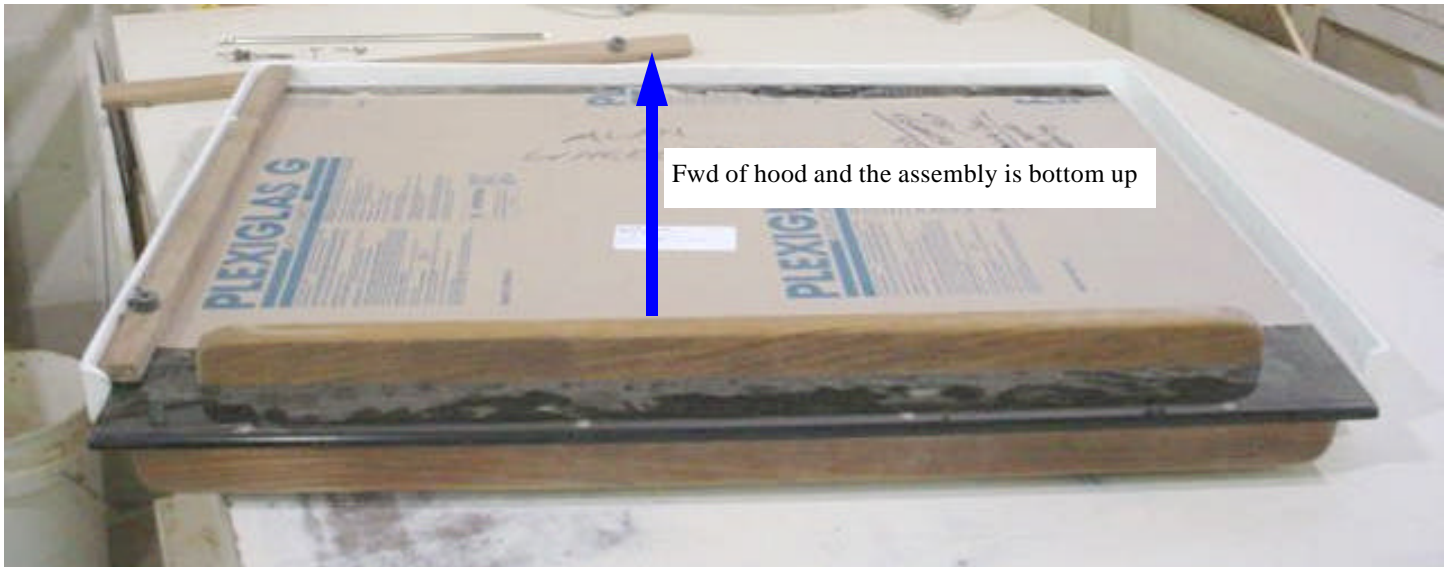


Fig 7.

1. Flip fiberglass sea hood bottom up.
2. Match and fit hatch, hatch assembly, and teak tracks to fiberglass sea hood. And try to operate the sliding hatch to see if the assembly is working properly. (for teak track, notch should facing outward)
3. If the hatch is not easy to slide, you might need to table saw to sanding some necessary sliding surface down.
4. Teak track to fiberglass sea hood mounting location, drill center locates 3" afterward from fwd sea hood edge and 3" forwards from aft sea hood edge then 2 fasteners will be at even place between fwd and aft mounting holes.
5. Mark teak track mounting locations (both sides).
6. Use $\phi 5/32$ drill bit and counter sunk head (adjust drill bit length 1" from counter sunk head) to drill mounting holes on both sides of fiberglass sea hood, so there will be 4 mounting holes on each side.
7. Apply 733 glass & metal sealant on all mounting holes then use #10 x 1-1/4" flat head wood screws to secure teak track to fiberglass sea hood, so sliding hatch will work properly.
8. Clean up excess caulk from fiberglass sea hood.

Hunter 25 Sea Hood Assembly Cabinet Shop

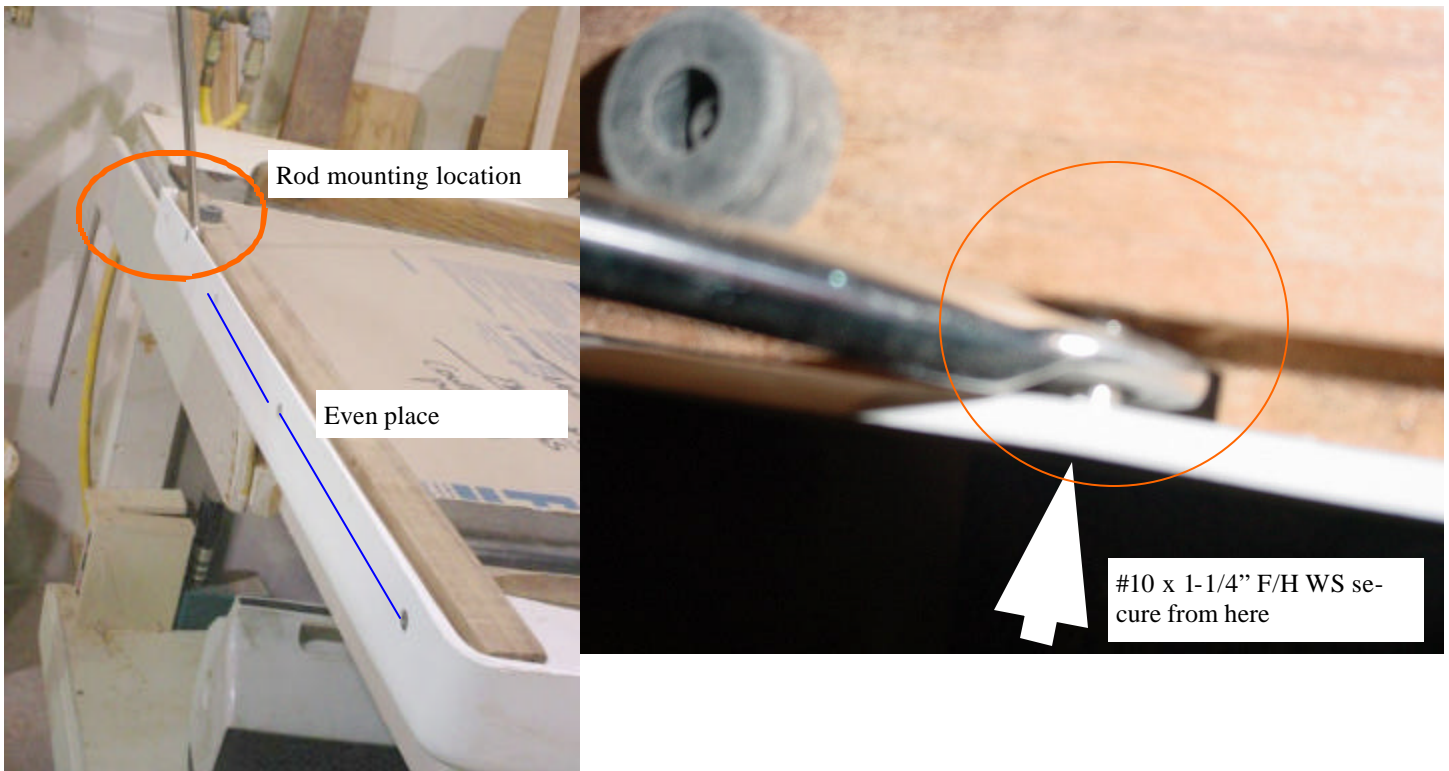


Fig 8.

1. Place stainless support rods into slot with its through hole end locates at center of teak track notch so support .
2. Use $\varnothing 5/32$ drill bit and counter sunk head to drill support rod's mounting location.
3. Use #10 x 1-1/4" flat head wood screw to hold support between fiberglass and slide track (both sides).
4. Try to operate support rods (the rod should be able to easily flip up and should be able to be stow in teak track gap.)



Fig 9. Sea hood assembly Installation complete