

H27 DECK RIGGING ELECTRICAL INSTALLATION

DECK HARNESS WIRE RUNS

Deck Rigging Electrical Process:

Process Time: 4 hours.

1. Move all deck harness to port side and next to 2nd stanchion area.
2. Look for red tape mark that is on main deck harness.
3. Identify the aft section wires of red tape(with major connectors).
4. Attach red tape mark to underneath port side 2nd stanchion area, which is about 3" fwd of the port 2nd stanchion.
5. Use cable tie to secure the red tape mark to putty bond wood.
6. Start from red tape location, run fwd deck harness along port side forward to fwd end of the hatch radius (parallel to that radius), this location should be main cabin port side reading light wire location, please see deck harness wire list chart to identify it. Secure this place of harness to putty bond wood with cable tie.
7. Continue to run fwd end of harness along port side of deck forward to aft port end of anchor well location, then secure harness at this location with cable tie (secure to putty bond wood).
8. Run deck harness from port side aft end of anchor well location to starboard side aft end of the anchor well then, then secure the harness at this location. (at this location should have bow light wire, see wire color code).
9. Run deck harness from the starboard side aft end of anchor well location along the starboard side of deck backward to parallel to fwd hatch radius location (at this location should have main cabin starboard reading light wire, see color code). Secure wire to deck at this location.
10. Start to run aft red tape section of deck harness.
11. Run deck harness inboard right after of vanity area then install cable tie to putty bond wood.
12. Run vanity light wires to vanity area then attach the wire to cable tie and secure it to putty bond wood.
13. Run deck harness to companionway to main distribution panel section. Then secure cable tie to putty bond wood then attach harness to cable tie.
14. Run Quarter berth reading light wire to fwd upper center section of deck then attach wires to putty bond wood.
15. Run Quarter berth Dome light wire to starboard side upper hanging locker section of deck then attach wires to putty bond wood.
16. Run stern light wire to stern light location and look for putty bond woods that are along with steering section.
17. Please refer to deck harness chart and following figures when you run the deck harness.
18. See and reference all figures in the following pages.

H27 DECK RIGGING ELECTRICAL INSTALLATION

DECK HARNESS WIRE RUNS

Deck Rigging Electrical Process:

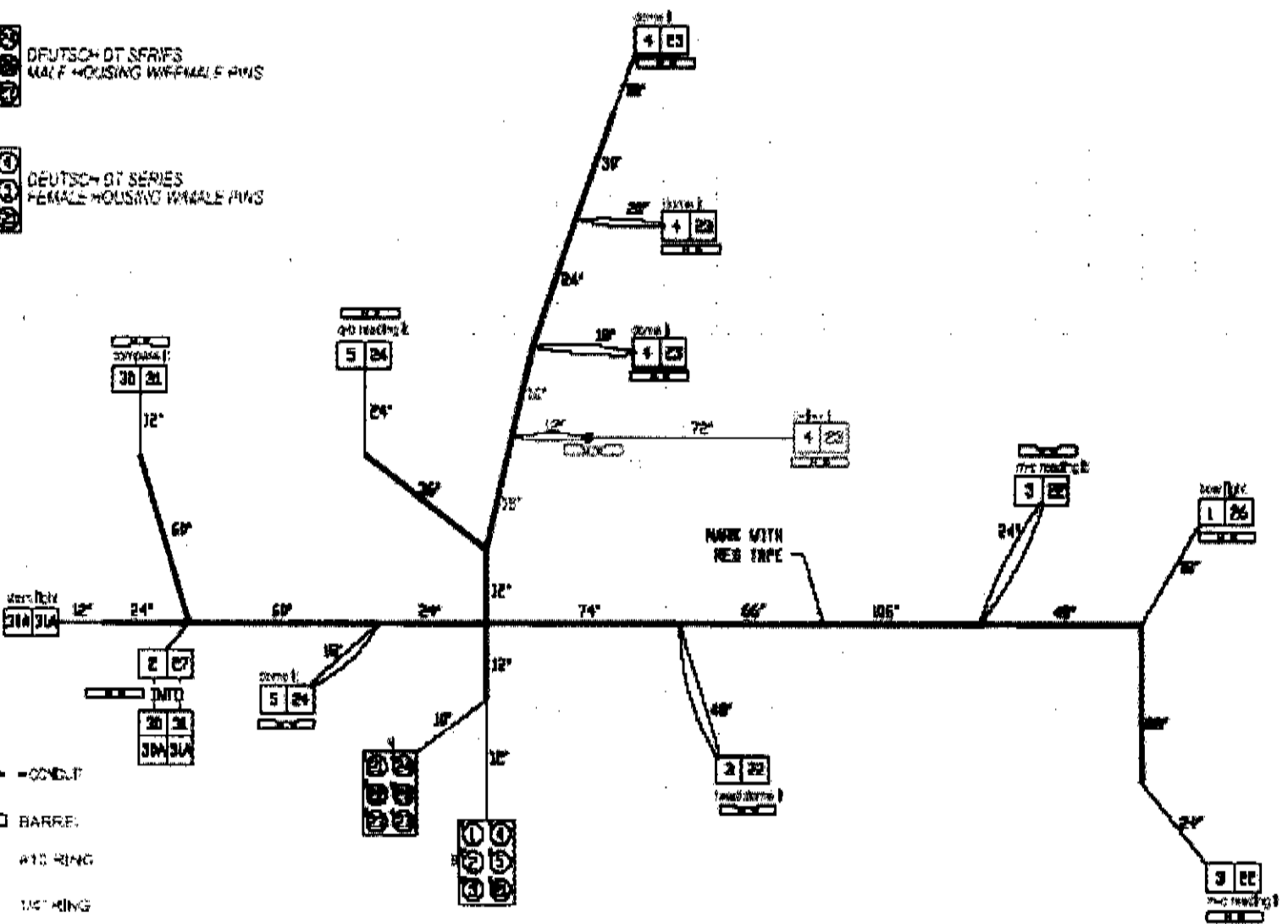
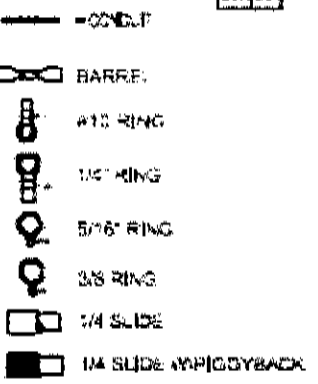
Process Time: 4 hours.

1. Move all deck harness to port side and next to 2nd stanchion area.
2. Look for red tape mark that is on main deck harness.
3. Identify the aft section wires of red tape(with major connectors).
4. Attach red tape mark to underneath port side 2nd stanchion area, which is about 3” fwd of the port 2nd stanchion.
5. Use cable tie to secure the red tape mark to putty bond wood.
6. Start from red tape location, run fwd deck harness along port side forward to fwd end of the hatch radius (parallel to that radius), this location should be main cabin port side reading light wire location, please see deck harness wire list chart to identify it. Secure this place of harness to putty bond wood with cable tie.
7. Continue to run fwd end of harness along port side of deck forward to aft port end of anchor well location, then secure harness at this location with cable tie (secure to putty bond wood).
8. Run deck harness from port side aft end of anchor well location to starboard side aft end of the anchor well then, then secure the harness at this location. (at this location should have bow light wire, see wire color code).
9. Run deck harness from the starboard side aft end of anchor well location along the starboard side of deck backward to parallel to fwd hatch radius location (at this location should have main cabin starboard reading light wire, see color code). Secure wire to deck at this location.
10. Start to run aft red tape section of deck harness.
11. Run deck harness inboard right after of vanity area then install cable tie to putty bond wood.
12. Run vanity light wires to vanity area then attach the wire to cable tie and secure it to putty bond wood.
13. Run deck harness to companionway to main distribution panel section. Then secure cable tie to putty bond wood then attach harness to cable tie.
14. Run Quarter berth reading light wire to fwd upper center section of deck then attach wires to putty bond wood.
15. Run Quarter berth Dome light wire to starboard side upper hanging locker section of deck then attach wires to putty bond wood.
16. Run stern light wire to stern light location and look for put bond woods that are along with steering section.
17. Please refer to deck harness chart and following figures when you run the deck harness.
18. See and reference all figures in the following pages.

H27 DECK RIGGING ELECTRICAL INSTALLATION DECK HARNESS WIRE LIST

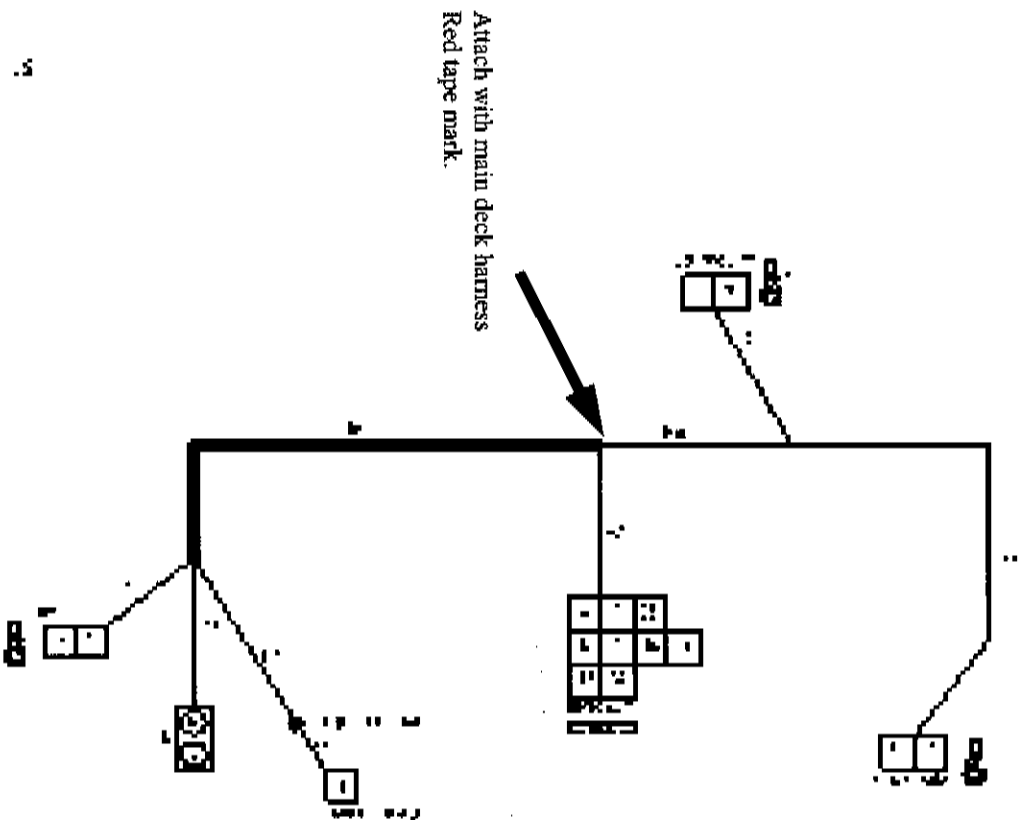
HUNTER 27 DC DECK HARNESS						10/04/2004
WIRE#	GAUGE	COLOR	LENGTH	FUNCTION		
1	16	GRAY/WHITE	336"	BOW LIGHT		
2	16	GRAY/YELLOW	108"	STERN/COMPASS LIGHT		
3	16	BLUE	574"	PORT&FWD LIGHTS		
4	16	BLUE	314"	MAIN CABIN LIGHTS		
5	16	BLUE	180"	AFT CABIN LIGHTS		
6	14	RED/YELLOW	242"	STEREO		
7	14	YELLOW/RED	254"	STEREO MEMORY		
8	16	WHITE/ORANGE	190"	SPEAKER LEFT (+)		
9	16	WHITE/YELLOW	190"	SPEAKER LEFT (-)		
10	16	WHITE/BLUE	314"	SPEAKER RIGHT (+)		
11	16	WHITE/BLACK	314"	SPEAKER RIGHT (-)		
12	16	RED/WHITE	242"	VHF RADIO		
21	14	YELLOW	22"	12V OUTLET NEG.		
22	16	YELLOW	572"	PORT&FWD LTS NEG.		
23	16	YELLOW	312"	MAIN CABIN LTS NEG.		
24	16	YELLOW	178"	AFT CABIN LTS NEG.		
25	14	YELLOW	242"	STEREO NEG.		
26	16	YELLOW	334"	BOW LT NEG.		
27	16	YELLOW	106"	STERN/COMPASS LT NEG.		
28	16	YELLOW	242"	VHF RADIO NEG.		
29	10/3	ROMEX	216"	SHORE POWER		
30	16	GRAY/YELLOW	72"	COMPASS LT		
30A	16	GRAY/YELLOW	36"	STERN LT		
31	16	YELLOW	72"	COMPASS LT NEG.		
31A	16	YELLOW	36"	STERN LT NEG.		

H27 DECK RIGGING ELECTRICAL INSTALLATION STANDARD DECK HARNESS



HUNTER h27			
DECK HARNESS			
DATE	BY	REV	OF
0015	JK	11-03-04	1
ISSUED BY	APPROVED BY	DATE	ORIGIN NUMBER
JR	D		

H27 DECK RIGGING ELECTRICAL INSTALLATION DE- LUX MODEL OPTIONAL DECK HARNESS



HUNTER H27	
OPTIONAL DECK HARNESS	
DATE	BY

- 1. 1/2" DIA. TUBING
- 2. 1/4" DIA. TUBING
- 3. 1/8" DIA. TUBING
- 4. 1/4" DIA. TUBING
- 5. 1/8" DIA. TUBING
- 6. 1/4" DIA. TUBING
- 7. 1/8" DIA. TUBING
- 8. 1/4" DIA. TUBING
- 9. 1/8" DIA. TUBING
- 10. 1/4" DIA. TUBING
- 11. 1/8" DIA. TUBING
- 12. 1/4" DIA. TUBING
- 13. 1/8" DIA. TUBING
- 14. 1/4" DIA. TUBING
- 15. 1/8" DIA. TUBING
- 16. 1/4" DIA. TUBING
- 17. 1/8" DIA. TUBING
- 18. 1/4" DIA. TUBING
- 19. 1/8" DIA. TUBING
- 20. 1/4" DIA. TUBING
- 21. 1/8" DIA. TUBING
- 22. 1/4" DIA. TUBING
- 23. 1/8" DIA. TUBING
- 24. 1/4" DIA. TUBING
- 25. 1/8" DIA. TUBING
- 26. 1/4" DIA. TUBING
- 27. 1/8" DIA. TUBING
- 28. 1/4" DIA. TUBING
- 29. 1/8" DIA. TUBING
- 30. 1/4" DIA. TUBING
- 31. 1/8" DIA. TUBING
- 32. 1/4" DIA. TUBING
- 33. 1/8" DIA. TUBING
- 34. 1/4" DIA. TUBING
- 35. 1/8" DIA. TUBING
- 36. 1/4" DIA. TUBING
- 37. 1/8" DIA. TUBING
- 38. 1/4" DIA. TUBING
- 39. 1/8" DIA. TUBING
- 40. 1/4" DIA. TUBING
- 41. 1/8" DIA. TUBING
- 42. 1/4" DIA. TUBING
- 43. 1/8" DIA. TUBING
- 44. 1/4" DIA. TUBING
- 45. 1/8" DIA. TUBING
- 46. 1/4" DIA. TUBING
- 47. 1/8" DIA. TUBING
- 48. 1/4" DIA. TUBING
- 49. 1/8" DIA. TUBING
- 50. 1/4" DIA. TUBING
- 51. 1/8" DIA. TUBING
- 52. 1/4" DIA. TUBING
- 53. 1/8" DIA. TUBING
- 54. 1/4" DIA. TUBING
- 55. 1/8" DIA. TUBING
- 56. 1/4" DIA. TUBING
- 57. 1/8" DIA. TUBING
- 58. 1/4" DIA. TUBING
- 59. 1/8" DIA. TUBING
- 60. 1/4" DIA. TUBING
- 61. 1/8" DIA. TUBING
- 62. 1/4" DIA. TUBING
- 63. 1/8" DIA. TUBING
- 64. 1/4" DIA. TUBING
- 65. 1/8" DIA. TUBING
- 66. 1/4" DIA. TUBING
- 67. 1/8" DIA. TUBING
- 68. 1/4" DIA. TUBING
- 69. 1/8" DIA. TUBING
- 70. 1/4" DIA. TUBING
- 71. 1/8" DIA. TUBING
- 72. 1/4" DIA. TUBING
- 73. 1/8" DIA. TUBING
- 74. 1/4" DIA. TUBING
- 75. 1/8" DIA. TUBING
- 76. 1/4" DIA. TUBING
- 77. 1/8" DIA. TUBING
- 78. 1/4" DIA. TUBING
- 79. 1/8" DIA. TUBING
- 80. 1/4" DIA. TUBING
- 81. 1/8" DIA. TUBING
- 82. 1/4" DIA. TUBING
- 83. 1/8" DIA. TUBING
- 84. 1/4" DIA. TUBING
- 85. 1/8" DIA. TUBING
- 86. 1/4" DIA. TUBING
- 87. 1/8" DIA. TUBING
- 88. 1/4" DIA. TUBING
- 89. 1/8" DIA. TUBING
- 90. 1/4" DIA. TUBING
- 91. 1/8" DIA. TUBING
- 92. 1/4" DIA. TUBING
- 93. 1/8" DIA. TUBING
- 94. 1/4" DIA. TUBING
- 95. 1/8" DIA. TUBING
- 96. 1/4" DIA. TUBING
- 97. 1/8" DIA. TUBING
- 98. 1/4" DIA. TUBING
- 99. 1/8" DIA. TUBING
- 100. 1/4" DIA. TUBING



H27 DECK RIGGING ELECTRICAL INSTALLATION

PORT MAIN CABIN
READING LIGHT AND
PORT SPEAKER OUT-
LET



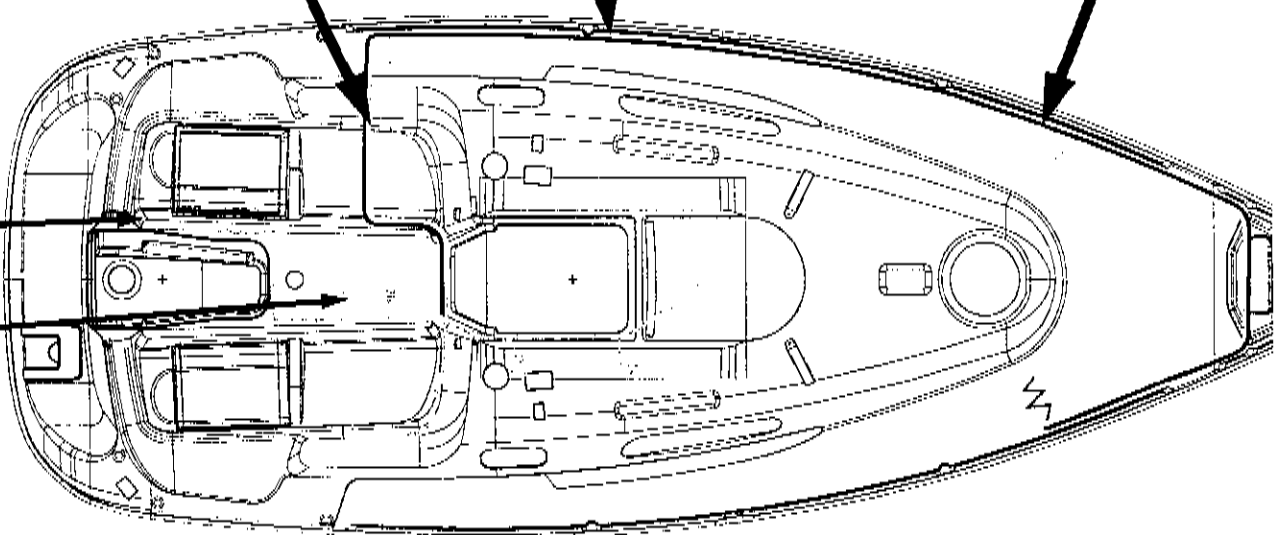
RED TAPE LOCATION AND
STEREO & VHF OUTLET I/O
CATION, JUST UNDER PORT
2ND STANCHION BASE FWD
2nd



RED TAPE LOCATION



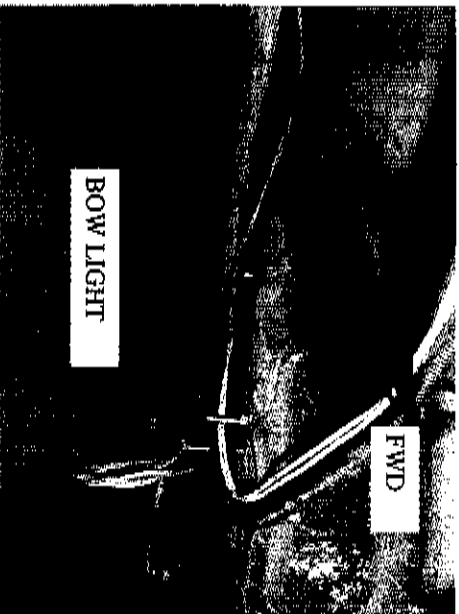
VANITY OUTLET



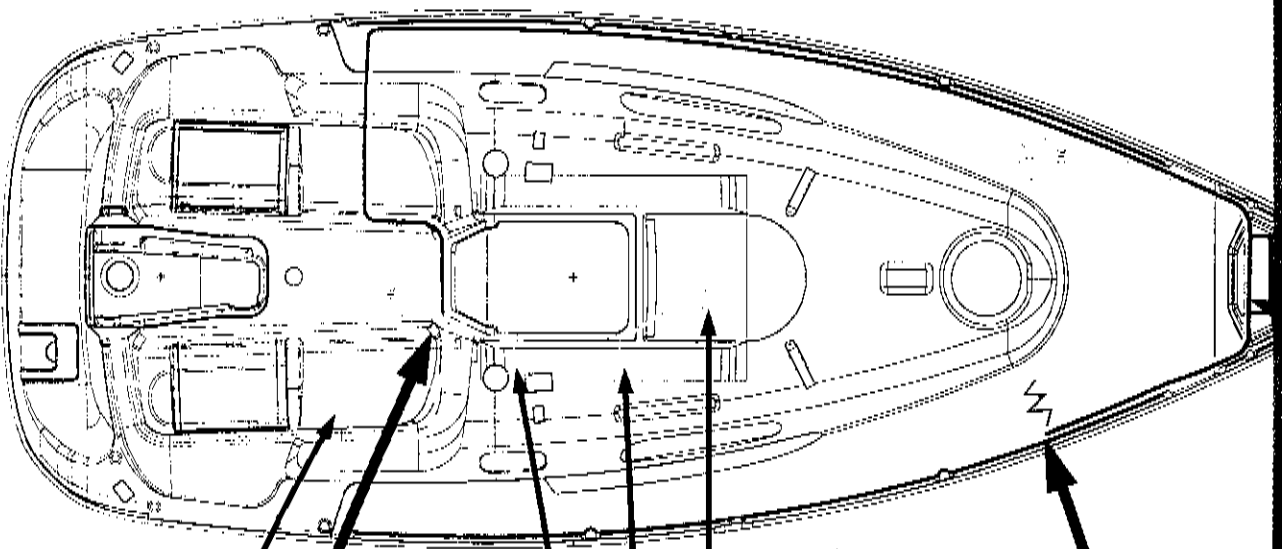
STERN LIGHT

Q BERTH DOME

H27 DECK RIGGING ELECTRICAL INSTALLATION



STARBOARD SPEAKER
AND MAIN CABIN READ-
ING LIGHT OUTLET



MAIN CABIN DOME LIGHTS OUTLET

Please reference to
the H27 deck har-
ness wire color
code.

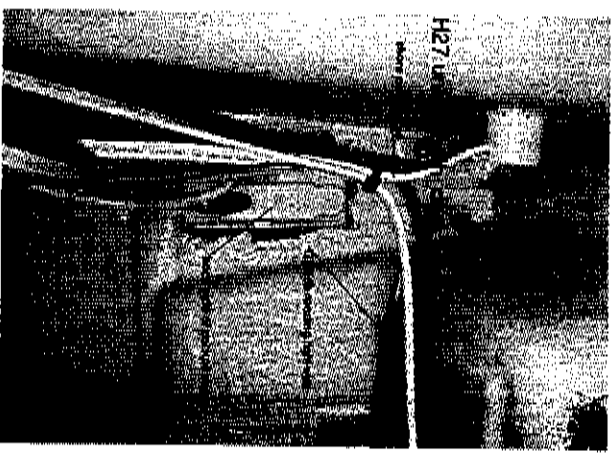
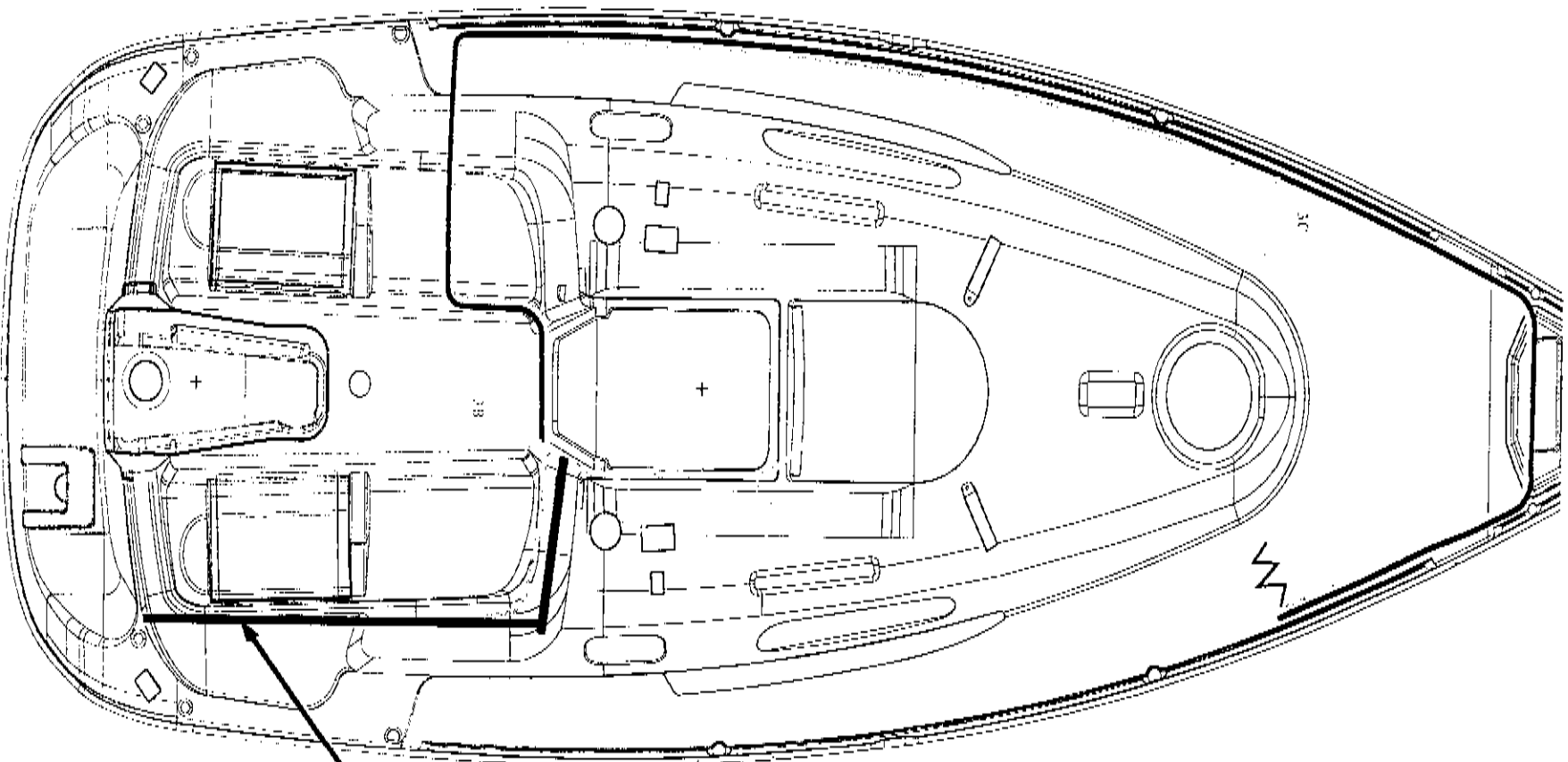


Q-B READING LIGHT



Main distribution panel

H27 DECK RIGGING ELECTRICAL INSTALLATION



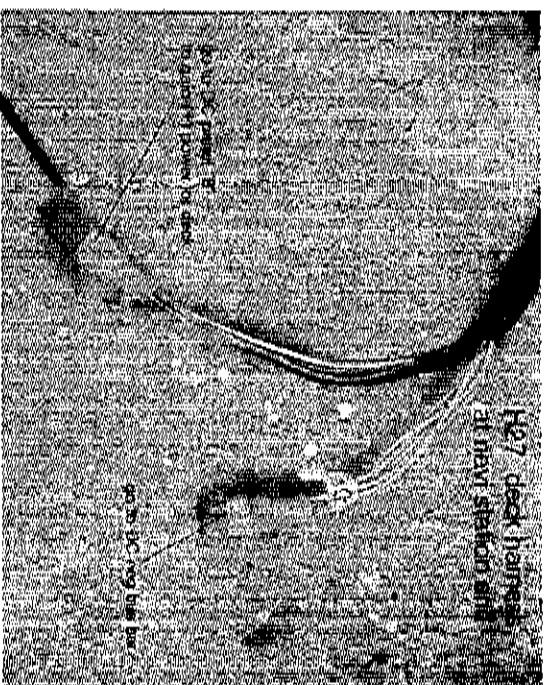
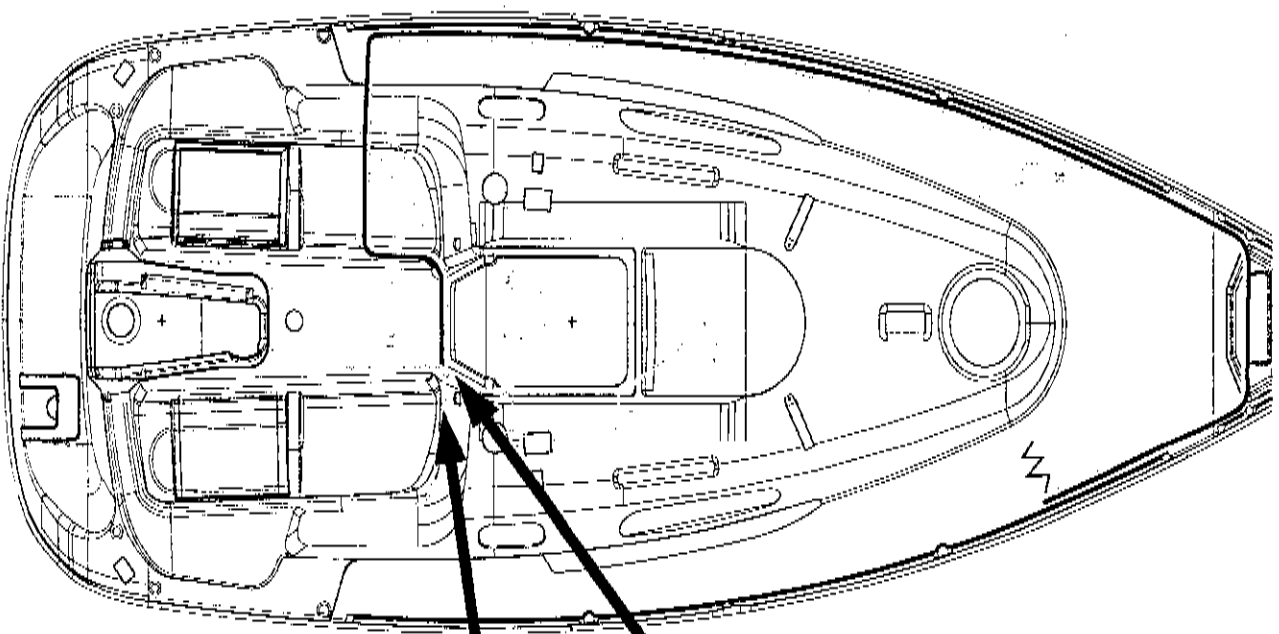
After install shore power box, use 10/3 to attach to shore power box.

Make shore power 10/3 wire a loop about 20" long and hanging down for further shore power breaker installation.

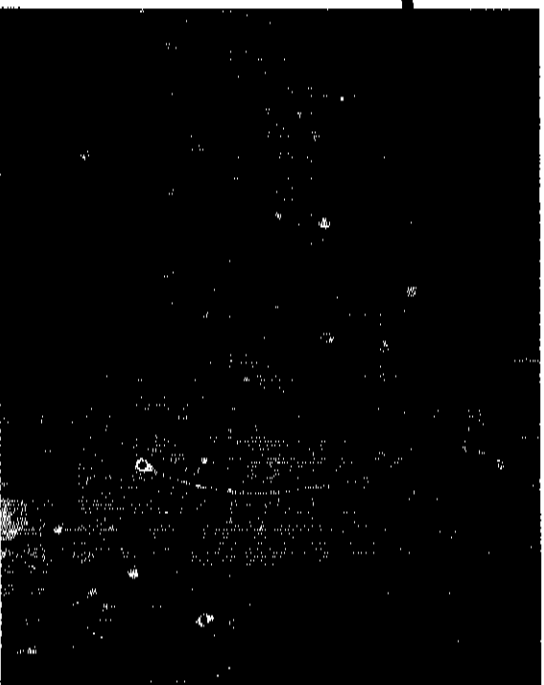
SHORE POWER 10/3 wire runs to main distribution panel

H27 DECK RIGGING ELECTRICAL INSTALLATION

Run Main distribution panel



Run Standard deck harness this end to main power to main power distribution panel



Optional deck harness at main power distribution panel.

H27 DECK RIGGING ELECTRICAL INSTALLATION

DECK HARNESS WIRE RUNS

Deck Rigging Electrical Process:

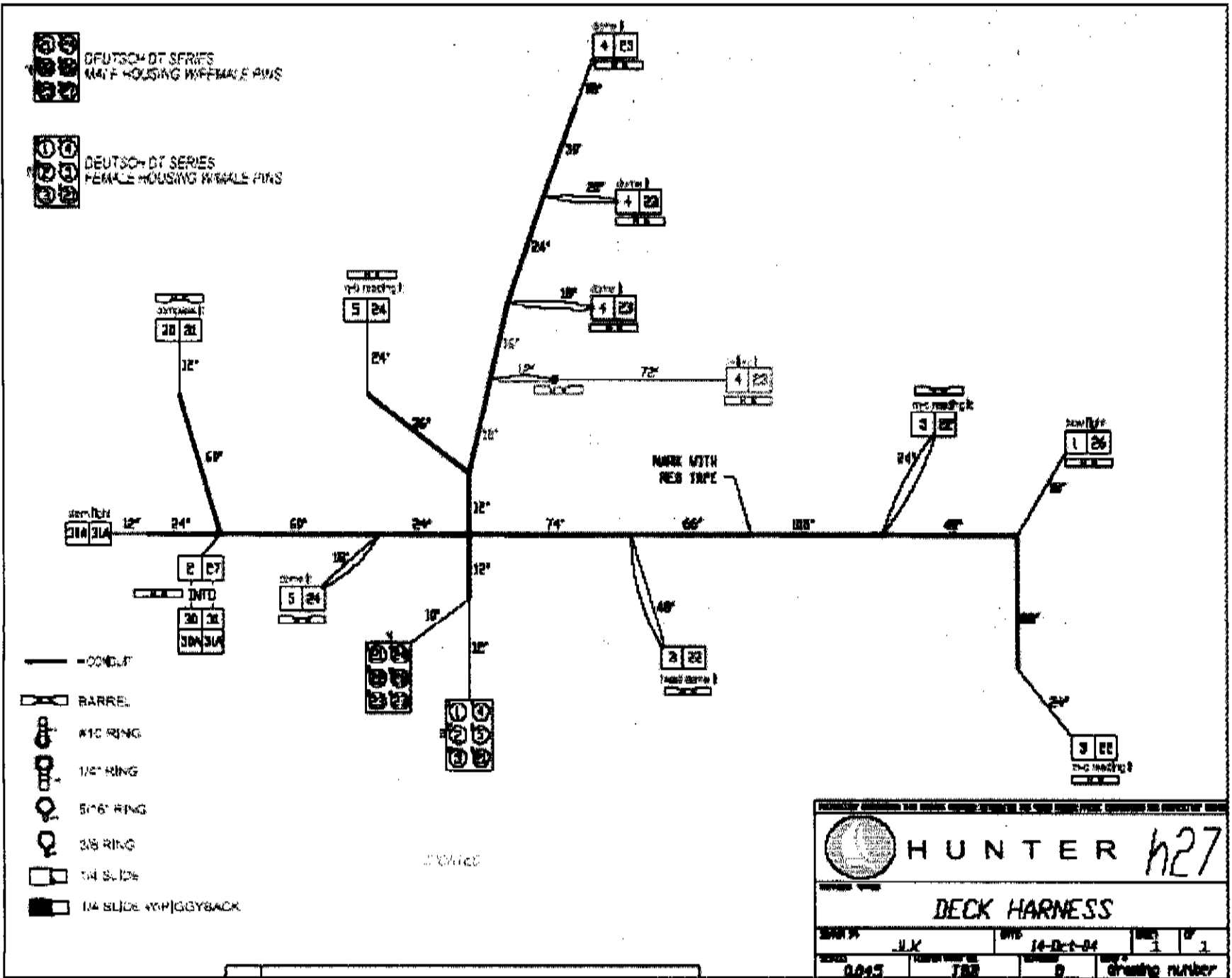
Process Time: 4 hours.

1. Move all deck harness to port side and next to 2nd stanchion area.
2. Look for red tape mark that is on main deck harness.
3. Identify the aft section wires of red tape(with major connectors).
4. Attach red tape mark to underneath port side 2nd stanchion area, which is about 3” fwd of the port 2nd stanchion.
5. Use cable tie to secure the red tape mark to putty bond wood.
6. Start from red tape location, run fwd deck harness along port side forward to fwd end of the hatch radius (parallel to that radius), this location should be main cabin port side reading light wire location, please see deck harness wire list chart to identify it. Secure this place of harness to putty bond wood with cable tie.
7. Continue to run fwd end of harness along port side of deck forward to aft port end of anchor well location, then secure harness at this location with cable tie (secure to putty bond wood).
8. Run deck harness from port side aft end of anchor well location to starboard side aft end of the anchor well then, then secure the harness at this location. (at this location should have bow light wire, see wire color code).
9. Run deck harness from the starboard side aft end of anchor well location along the starboard side of deck backward to parallel to fwd hatch radius location (at this location should have main cabin starboard reading light wire, see color code). Secure wire to deck at this location.
10. Start to run aft red tape section of deck harness.
11. Run deck harness inboard right after of vanity area then install cable tie to putty bond wood.
12. Run vanity light wires to vanity area then attach the wire to cable tie and secure it to putty bond wood.
13. Run deck harness to companionway to main distribution panel section. Then secure cable tie to putty bond wood then attach harness to cable tie.
14. Run Quarter berth reading light wire to fwd upper center section of deck then attach wires to putty bond wood.
15. Run Quarter berth Dome light wire to starboard side upper hanging locker section of deck then attach wires to putty bond wood.
16. Run stern light wire to stern light location and look for putty bond woods that are along with steering section.
17. Please refer to deck harness chart and following figures when you run the deck harness.
18. See and reference all figures in the following pages.

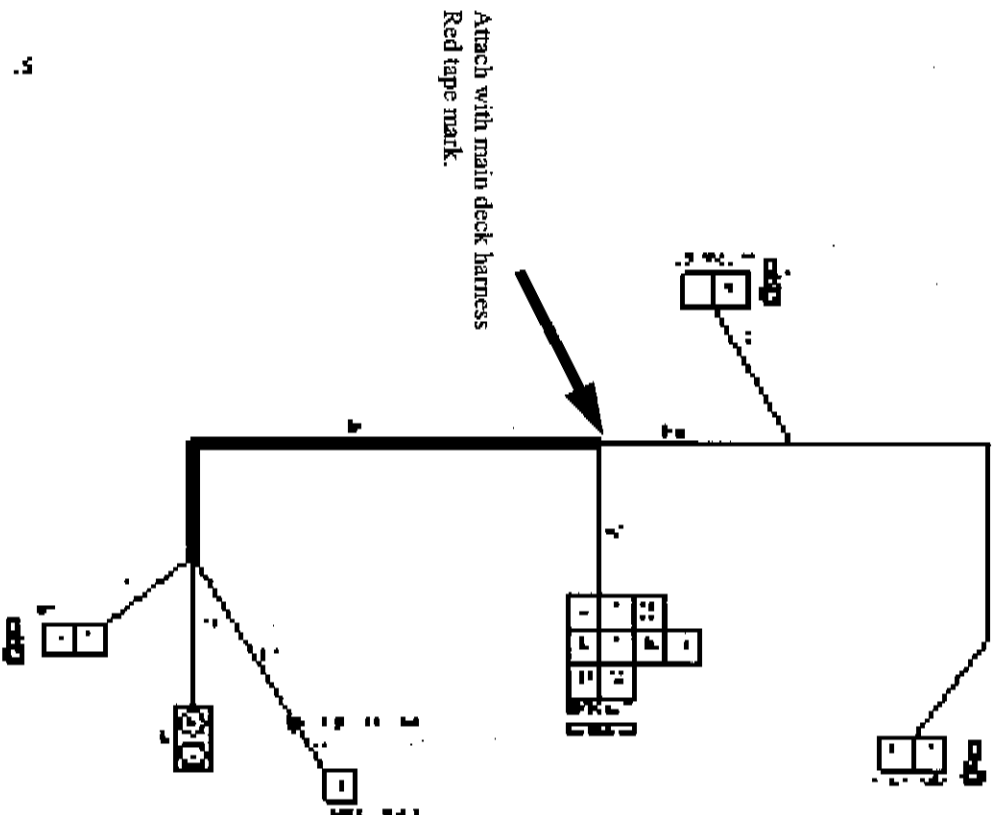
H27 DECK RIGGING ELECTRICAL INSTALLATION DECK HARNESS WIRE LIST

HUNTER 27 DC DECK HARNESS						10/04-12004
WIRE#	GAUGE	COLOR	LENGTH	FUNCTION		
1	16	GRAY/WHITE	336"	BOW LIGHT		
2	16	GRAY/YELLOW	108"	STERN/COMPASS LIGHT		
3	16	BLUE	574"	PORT&FWD LIGHTS		
4	16	BLUE	314"	MAIN CABIN LIGHTS		
5	16	BLUE	180"	AFT CABIN LIGHTS		
6	14	RED/YELLOW	242"	STEREO		
7	14	YELLOW/RED	254"	STEREO MEMORY		
8	16	WHITE/ORANGE	190"	SPEAKER LEFT (+)		
9	16	WHITE/YELLOW	190"	SPEAKER LEFT (-)		
10	16	WHITE/BLUE	314"	SPEAKER RIGHT (+)		
11	16	WHITE/BLACK	314"	SPEAKER RIGHT (-)		
12	16	RED/WHITE	242"	VHF RADIO		
21	14	YELLOW	22"	12V OUTLET NEG.		
22	16	YELLOW	572"	PORT&FWD LTS NEG.		
23	16	YELLOW	312"	MAIN CABIN LTS NEG.		
24	16	YELLOW	178"	AFT CABIN LTS NEG.		
25	14	YELLOW	242"	STEREO NEG.		
26	16	YELLOW	334"	BOW LT NEG.		
27	16	YELLOW	106"	STERN/COMPASS LT NEG.		
28	16	YELLOW	242"	VHF RADIO NEG.		
29	10/3	ROMEX	216"	SHORE POWER		
30	16	GRAY/YELLOW	72"	COMPASS LT		
30A	16	GRAY/YELLOW	36"	STERN LT		
31	16	YELLOW	72"	COMPASS LT NEG.		
31A	16	YELLOW	36"	STERN LT NEG.		


H27 DECK RIGGING ELECTRICAL INSTALLATION STANDARD DECK HARNESS







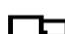



H27 DECK RIGGING ELECTRICAL INSTALLATION DE- LUX MODEL OPTIONAL DECK HARNESS



Attach with main deck harness
Red tape mark.

 HUNTER H27			
OPTIONAL DECK HARNESS			
REV	DATE	BY	APP
1	1/1/80	J. J.	

-  POWER
-  SIGNAL
-  GROUND
-  MOTOR
-  SOLENOID
-  BATTERY
-  CONTROL
-  LIGHTING

© 1980 Hunter Marine, Inc.
10000 1st Ave. S.E.
Bellevue, WA 98003

H27 DECK RIGGING ELECTRICAL INSTALLATION

PORT MAIN CABIN
READING LIGHT AND
PORT SPEAKER OUT-
LET



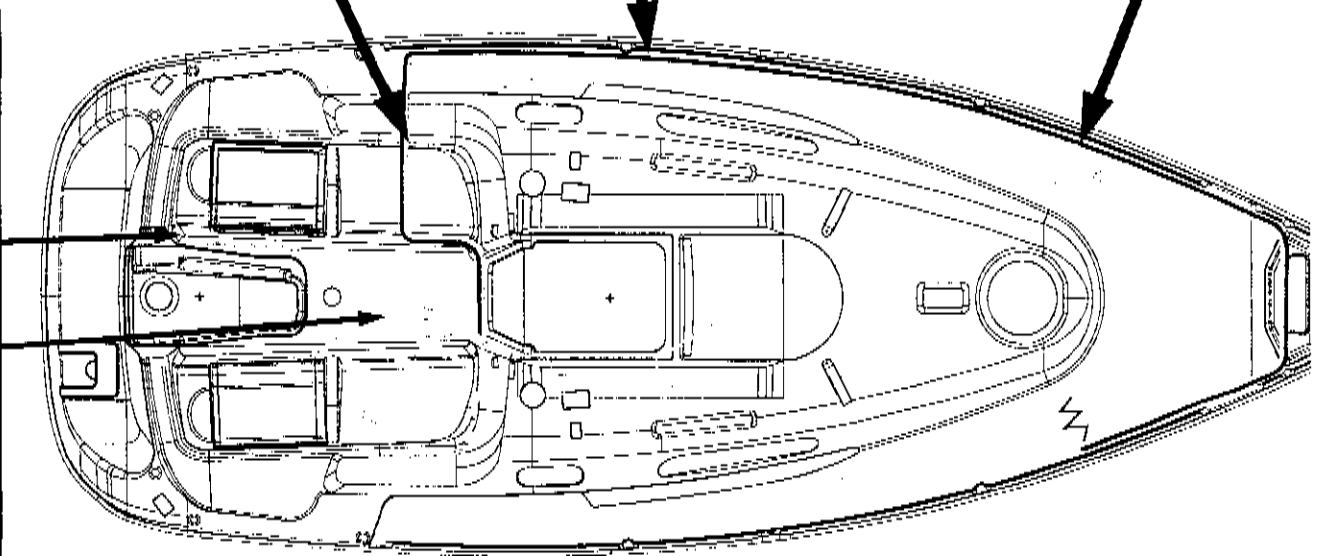
RED TAPE LOCATION AND
STEREO & VHF OUTLET LO-
CATION, JUST UNDER PORT
2ND STANCHION BASE FWD
2"



RED TAPE LOCATION



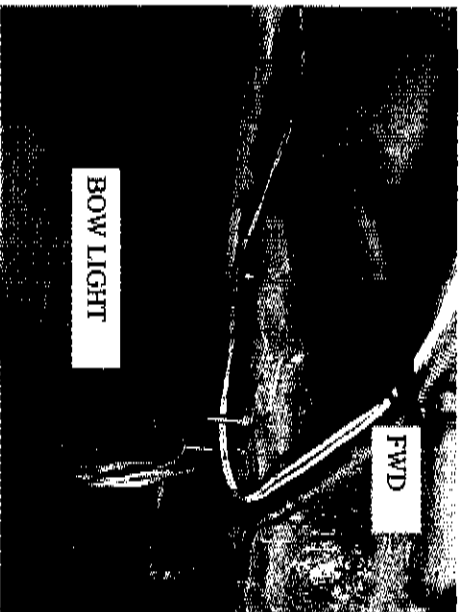
VANITY OUTLET



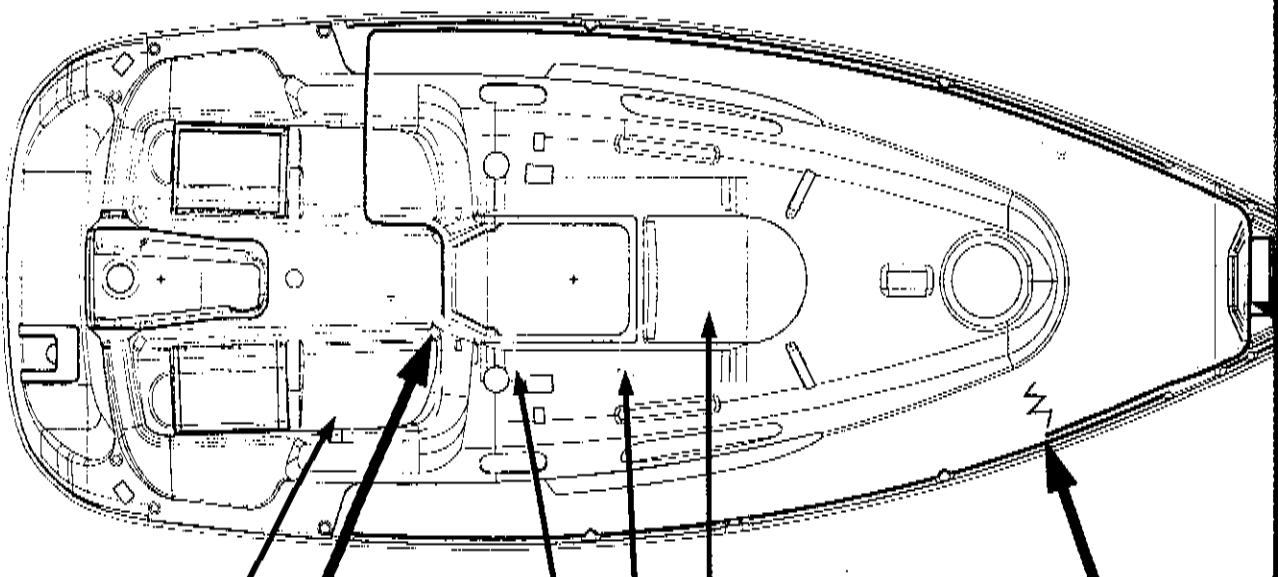
STERN LIGHT

Q BERTH DOME

H27 DECK RIGGING ELECTRICAL INSTALLATION

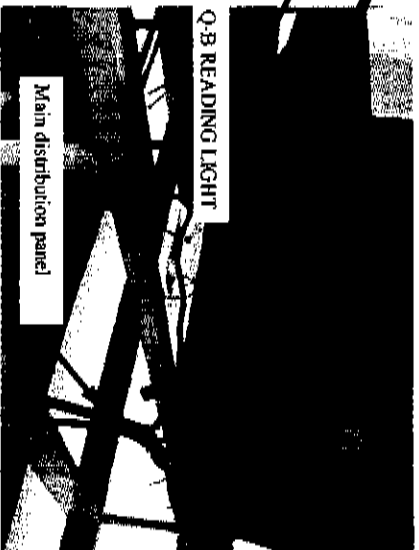


STARBOARD SPEAKER
AND MAIN CABIN READING LIGHT OUTLET



MAIN CABIN DOME LIGHTS OUTLET

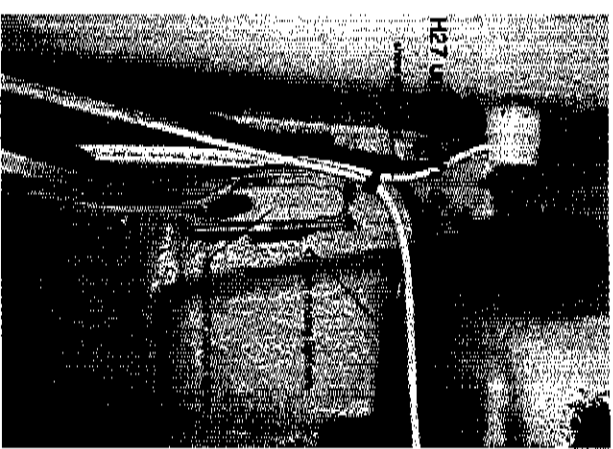
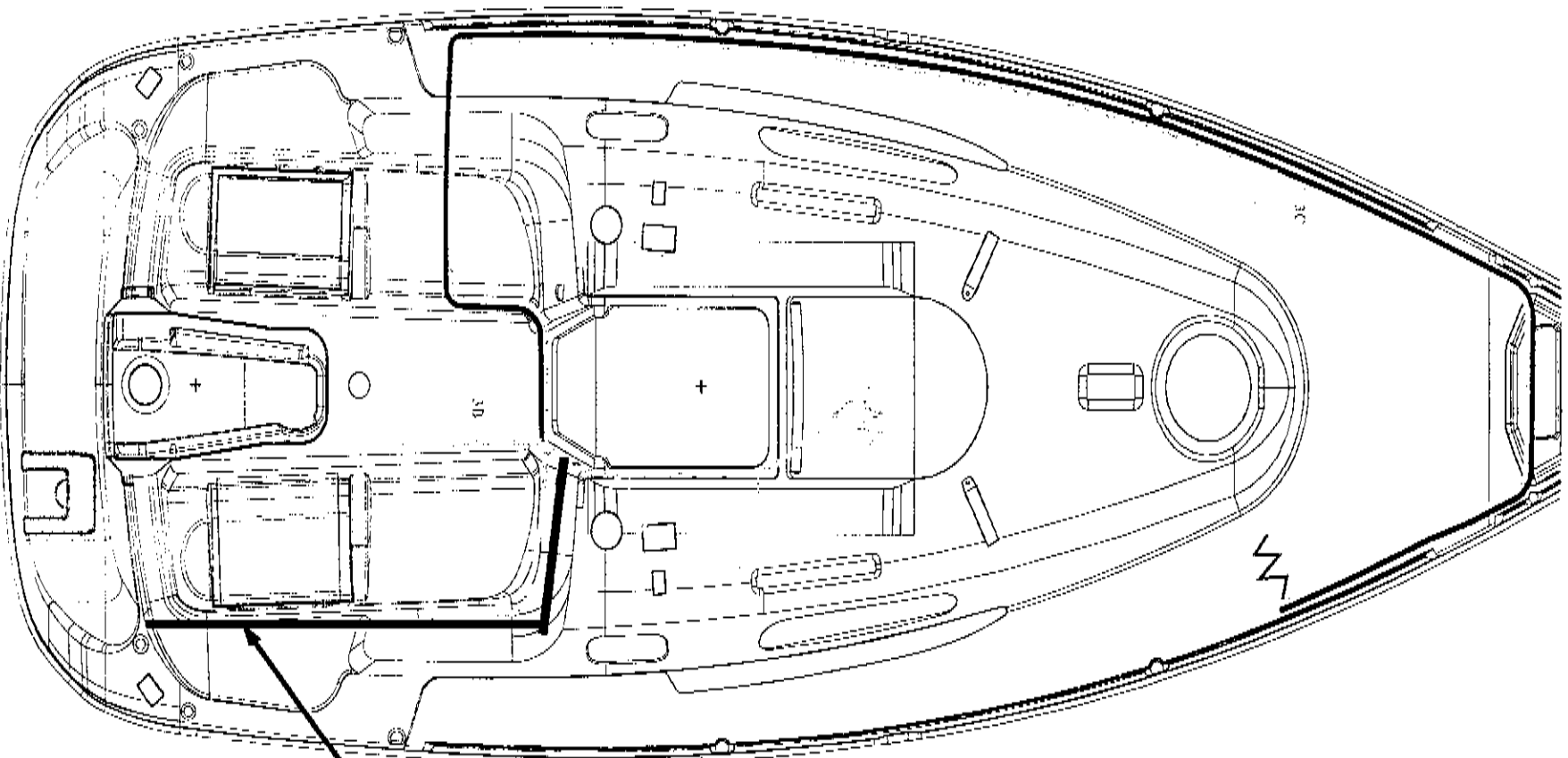
Please reference to the H27 deck harness wire color code.



Q-B READING LIGHT

Main distribution panel

H27 DECK RIGGING ELECTRICAL INSTALLATION



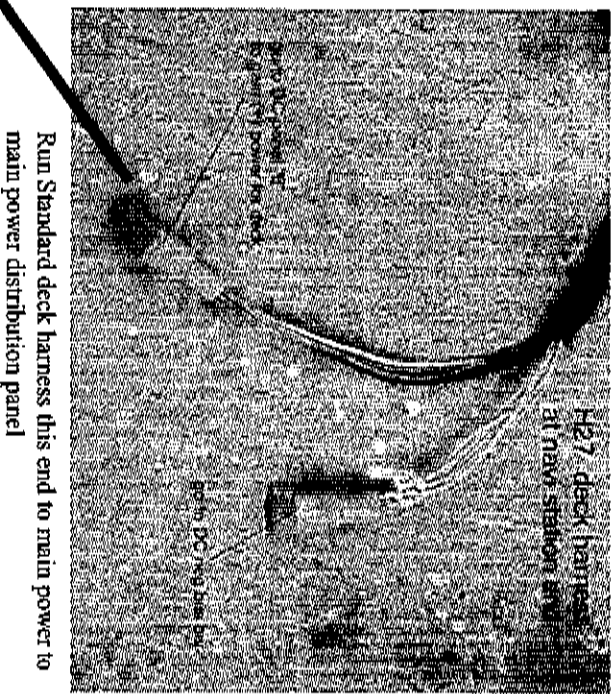
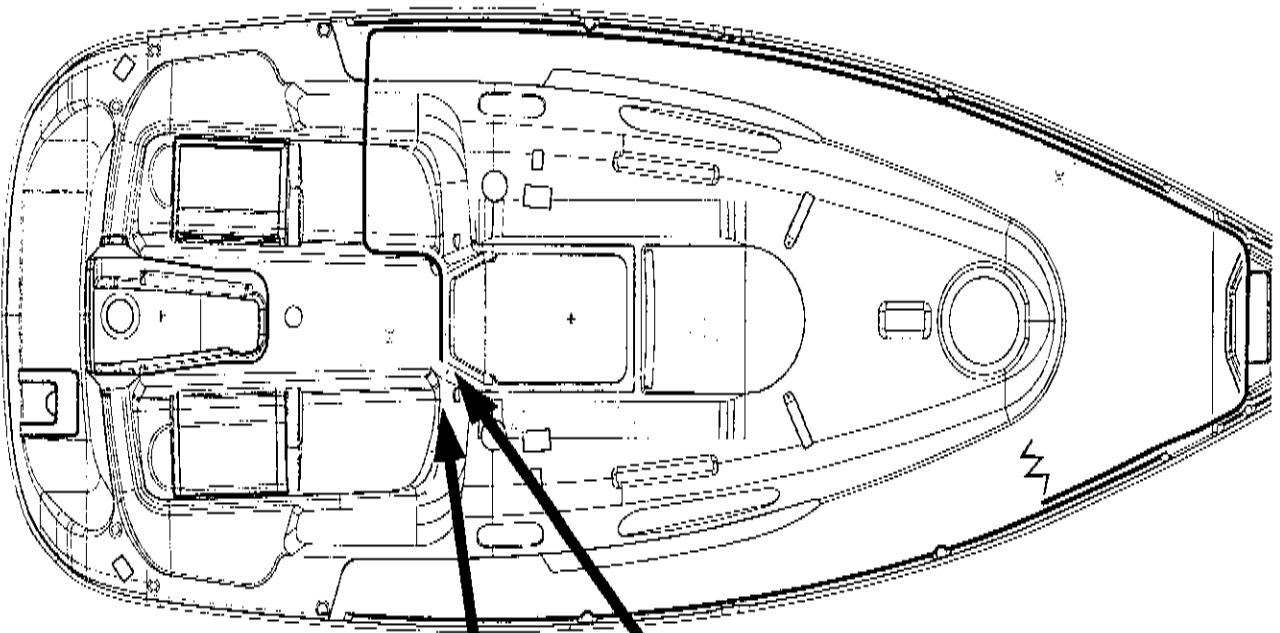
After install shore power box, use 10/3 to attach to shore power box.

Make shore power 10/3 wire a loop about 20" long and hanging down for further shore power breaker installation.

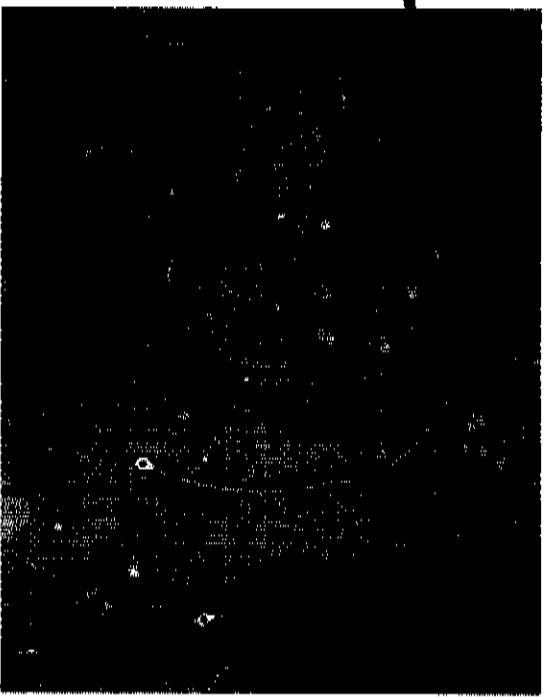
SHORE POWER 10/3 wire runs to main distribution panel

H27 DECK RIGGING ELECTRICAL INSTALLATION

Run Main distribution panel



Run Standard deck harness this end to main power to main power distribution panel



Optional deck harness at main power distribution panel.