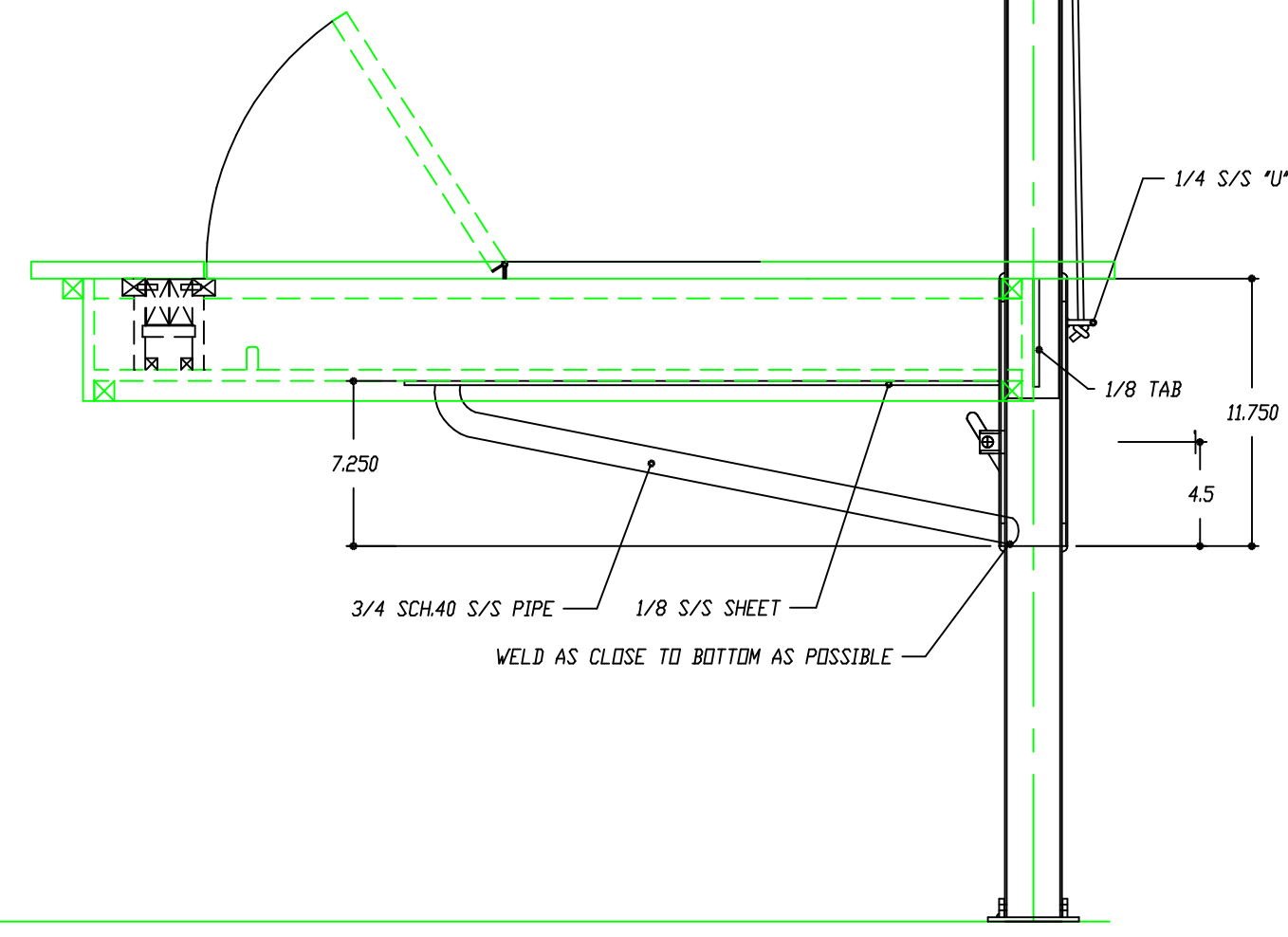
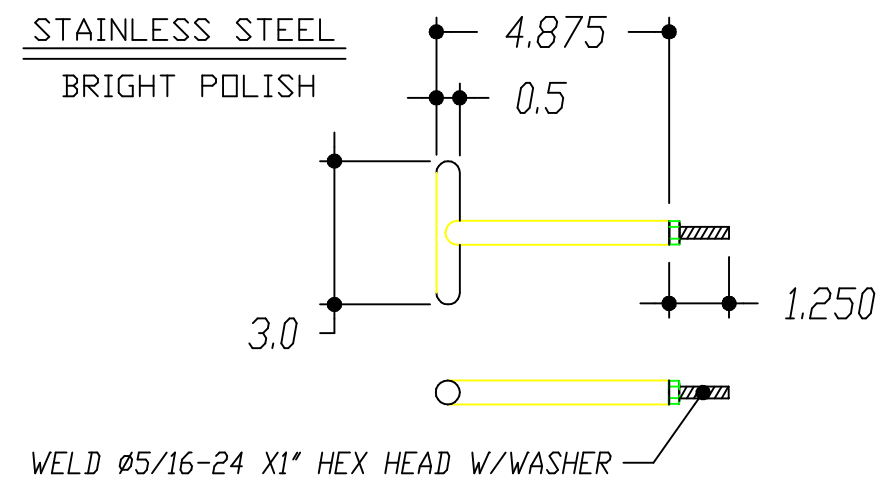


VIEW STBD LOOKING PORT.



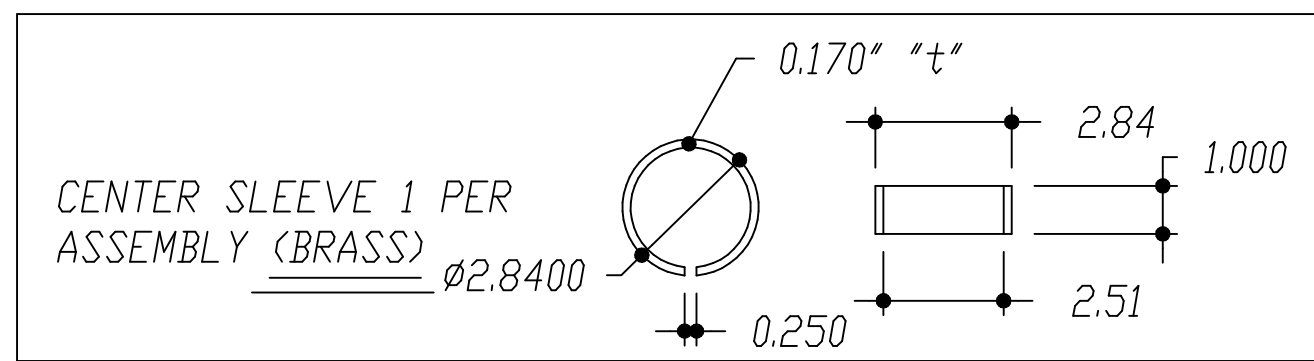
*** ADJUSTER KEY**

MATERIAL: 1/2" SS ROD
 QUANTITY: 1 PER ASSEMBLY
 FINISH: BRIGHT POLISH



SLEEVES

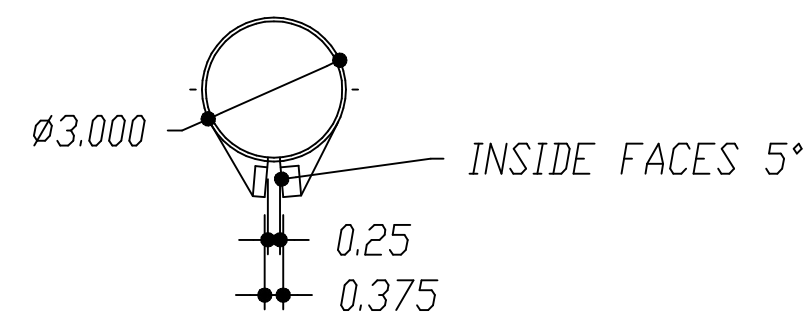
* MATERIALS: TOP/BOTTOM - UHMW
 MIDDLE FRICTION SLEEVE - BRASS
 QUANTITY: 1 CENTER, 2 END SLEEVES
 FINISH: SMOOTH, NATURAL COLOR
 THESE SHOULD BE HELD IN PLACE WITH 4 SET SCREWS PER SLEEVE AND SHOULD NOT PENETRATE INTERIOR WALL OF SLEEVES



END SLEEVES 2 PER ASSEMBLY

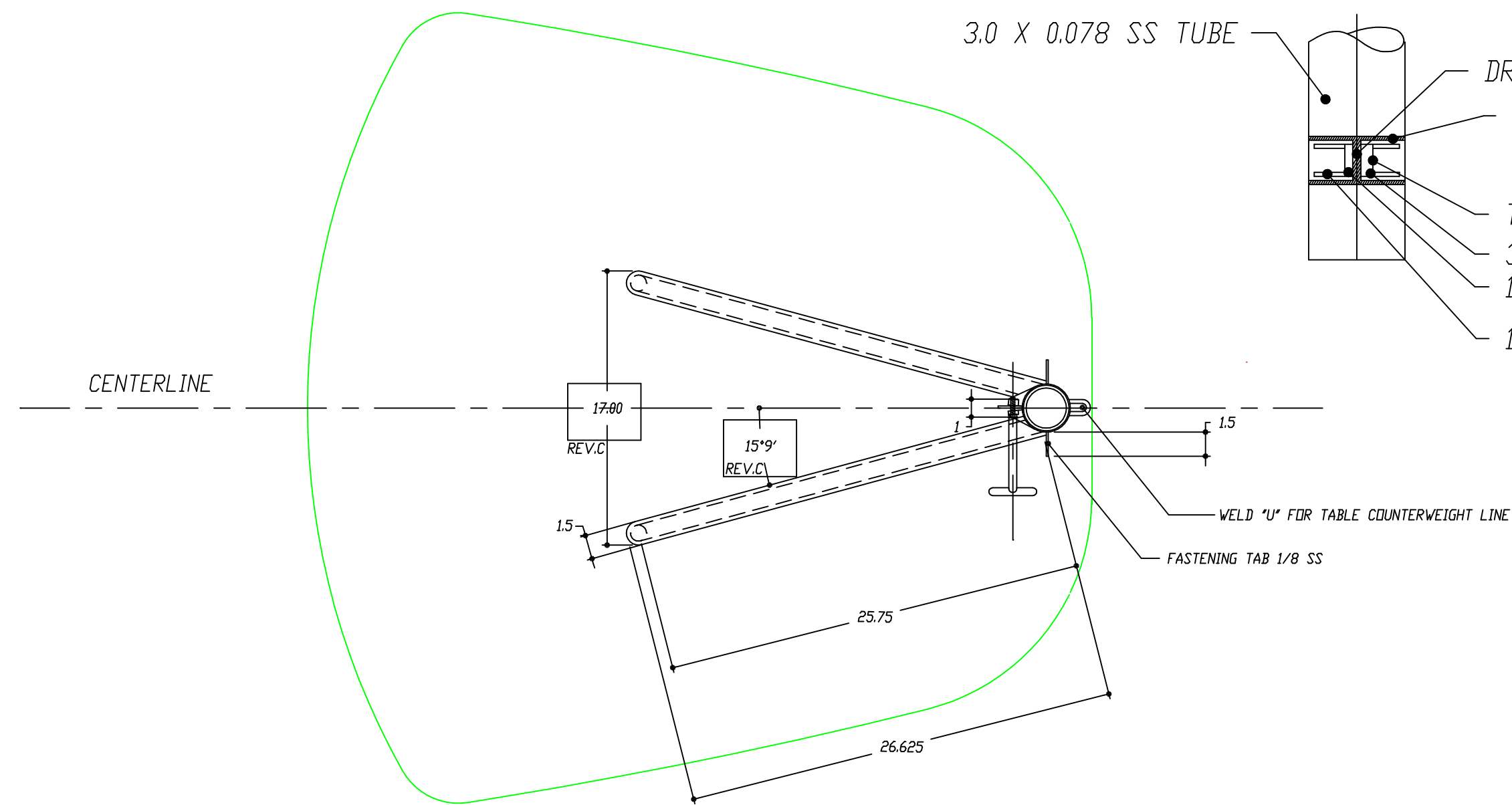
*** ADJUSTER DETAIL**

MATERIALS: LISTED BELOW
 QUANTITY: 1 PER ASSEMBLY
 FINISH: BRIGHT POLISH



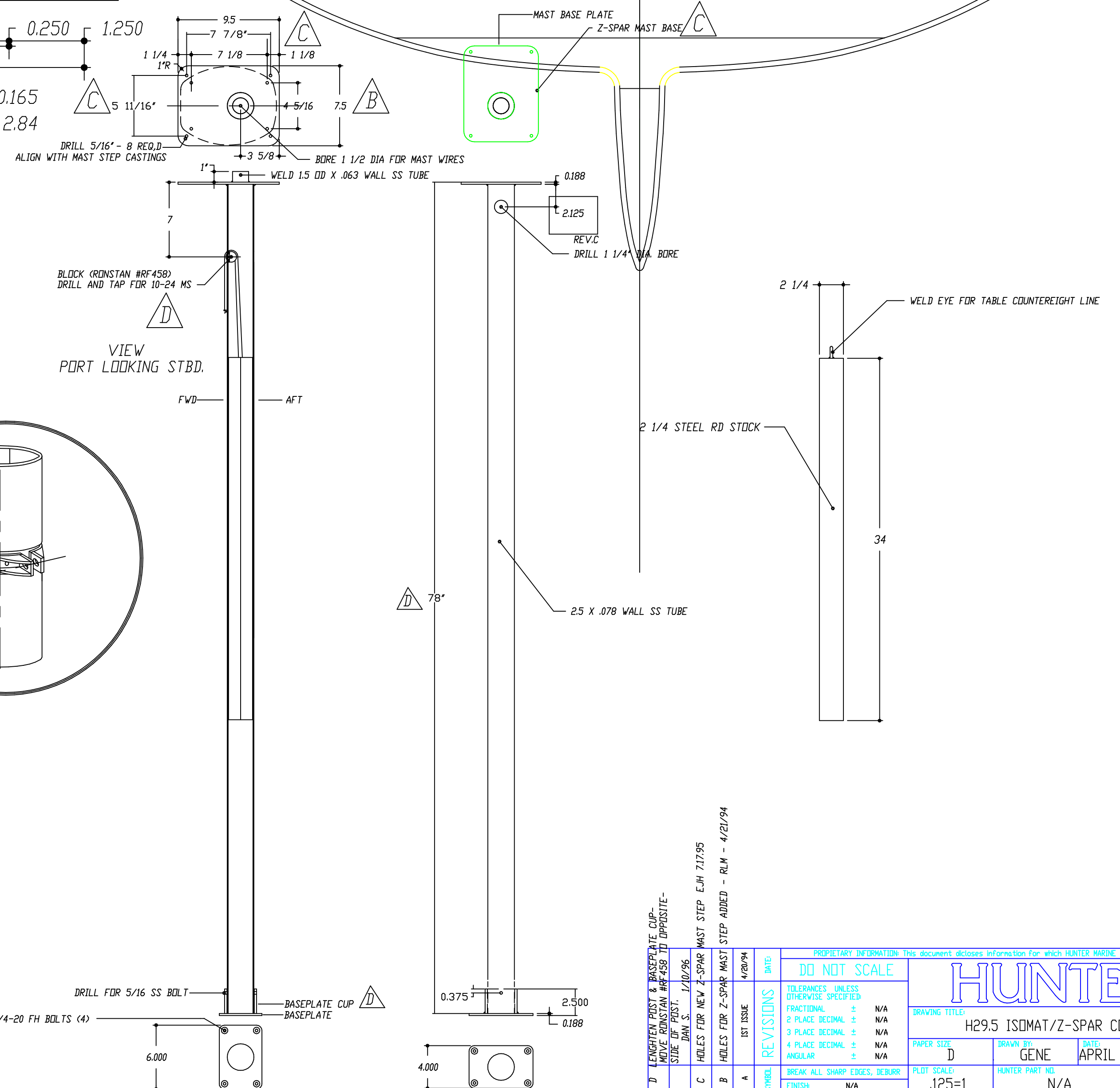
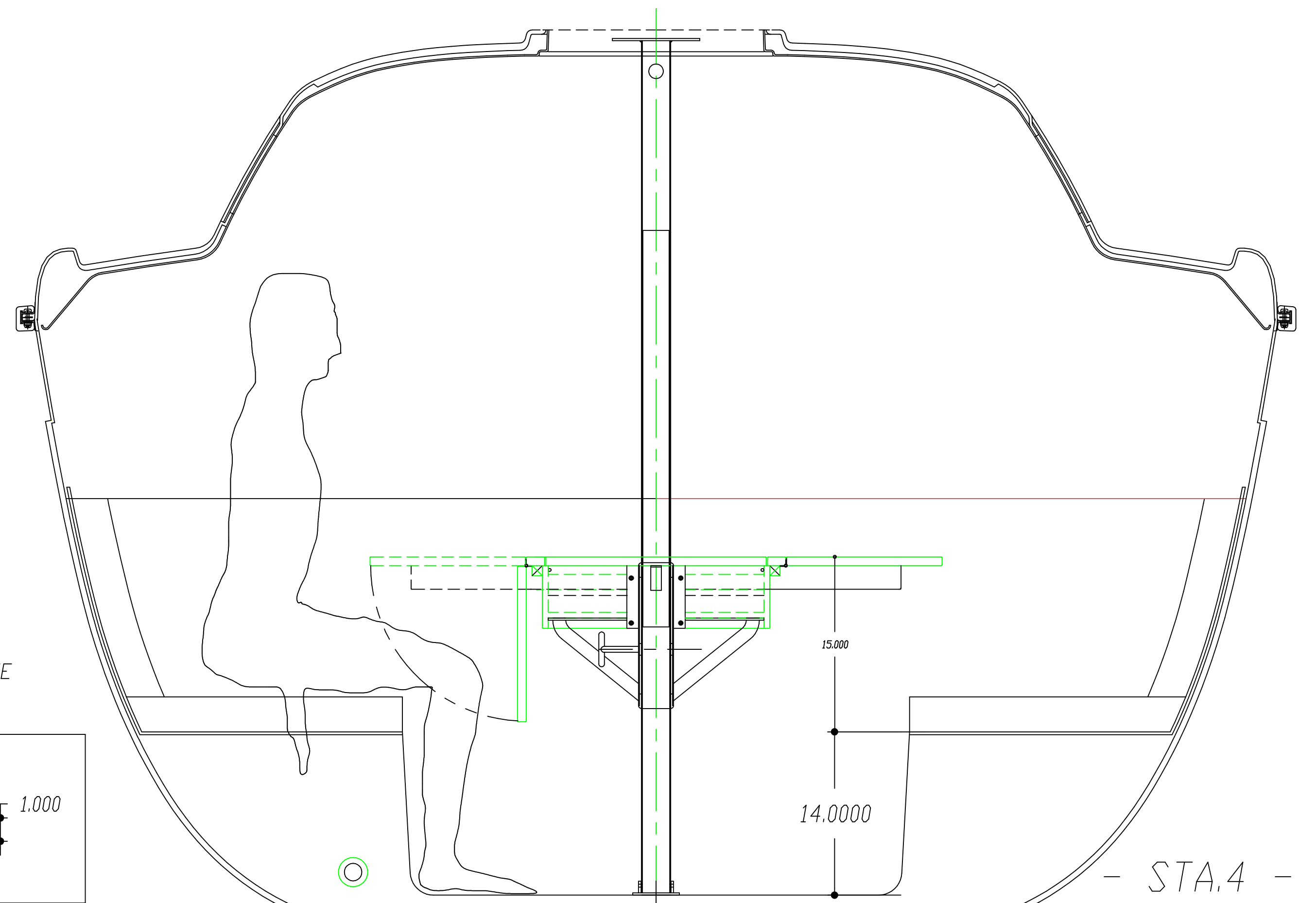
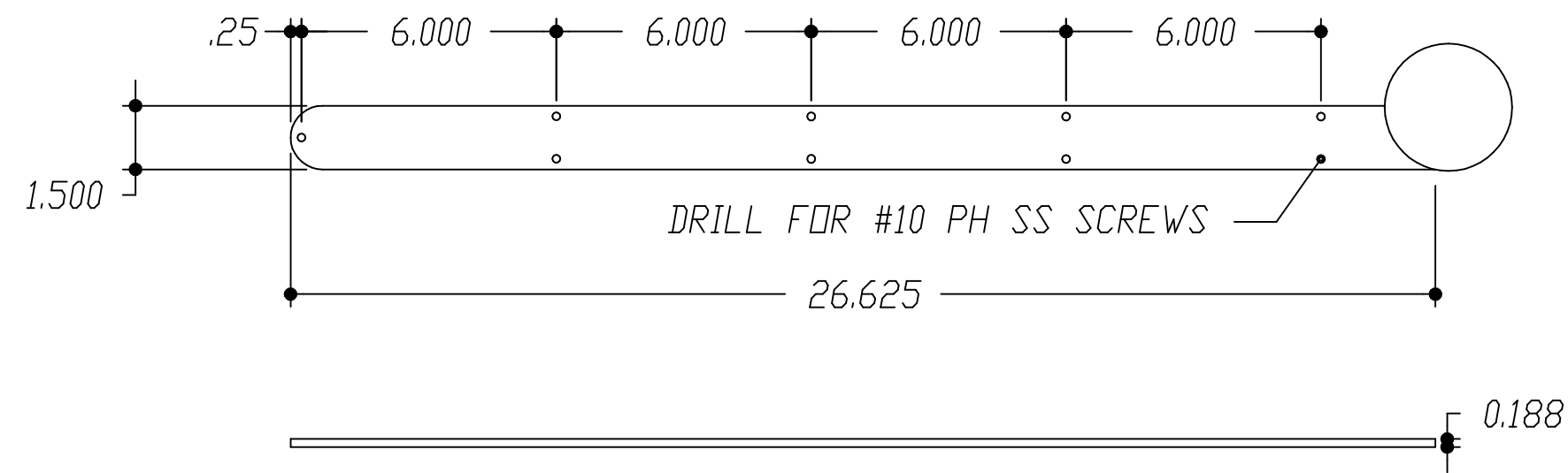
3.0 X 0.078 SS TUBE

- DRILL FOR 5/16 BOLT
- CUT TUBE 1/8 SLIT
- TAP FOR 5/16-24
- 3/8 SS PLATE
- 1/4 SS PLATE
- 1/8 SS SHEET



- PLAN -

*** TABLE SUPPORT PLATE**
 MATERIAL: .188 SS SHEET
 QUANTITY: 2 PER ASSEMBLY
 FINISH: BRIGHT POLISH



REVISIONS		SYMBOL		DATE		DESCRIPTION	
A				4/20/94			LENGTHEN POST & BASEPLATE CUP- BASEPLATE CUP- DRILL FOR 5/16 BOLT DRILL & CS FOR 1/4-20 FH BOLTS (4)
B							HOLES FOR NEW Z-SPAR MAST STEP ADDED - RLM - 4/20/94
C							HOLES FOR NEW Z-SPAR MAST STEP ADDED - RLM - 4/20/94
D							LENGTHEN POST & BASEPLATE CUP- BASEPLATE CUP- DRILL FOR 5/16 BOLT DRILL & CS FOR 1/4-20 FH BOLTS (4)

DO NOT SCALE		HUNTER	
DRAWING TITLE: H29.5 ISOMAT/Z-SPAR COMPRES POST		SCALE: 1.5"=1'	
DRAWING NO: H29D2111		DATE: APRIL 20/94	
DRAWN BY: GENE		CHECKED BY: N/A	
PAPER SIZE: D		PLOT SCALE: .125=1	
FINISH: N/A		BREAK ALL SHARP EDGES, DEBURR	