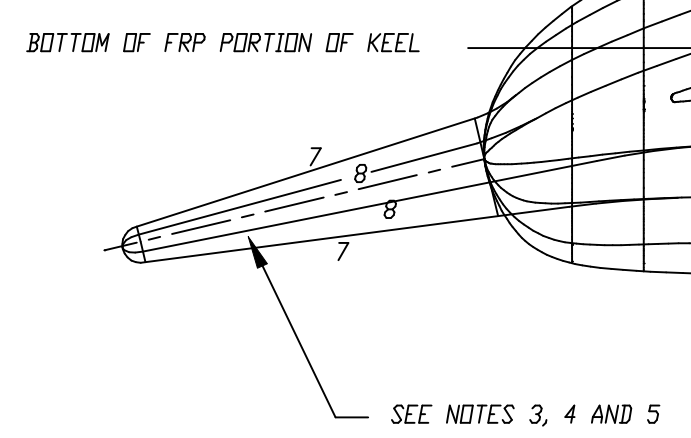
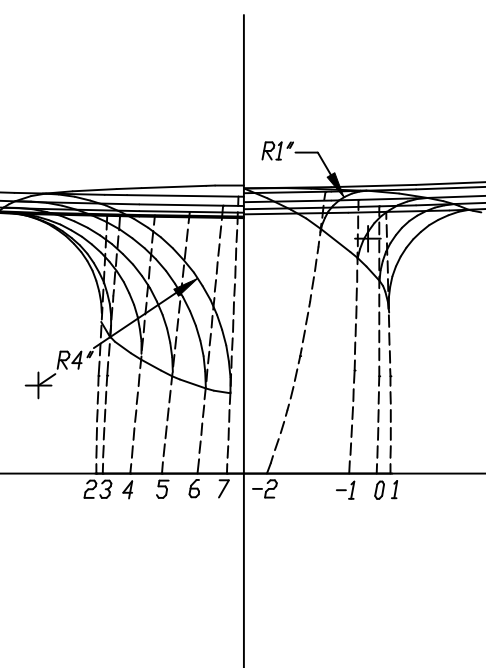


NOTES:
 1. KEEL BOLTS FABRICATED FROM 1/2" TYP. 316 S.S. ROD THREADED 1/2"-UNC FROM 1" BELOW WASHER PLANE TO END OF BOLT.
 2. GEOMETRY OF BULB AND WINGLETS TYPICAL TO OTHER HUNTER KEELS
 3. THIS DRAWING NOT SCALED FOR SHRINKAGE

REVISIONS A. INTERNAL BALLAST INCREASED & AFT TWO BOLTS LENGTHENED - RLM-3/2/94 B. INTERNAL BALLAST INCREASED & AFT TWO BOLTS LENGTHENED - RLM-3/2/94		DO NOT SCALE TELEPHONE: (415) 455-1111 FAX: (415) 455-1112 HUNTER	
DRAWING TITLE: REVISED H29.5 KEEL ASSEMBLY	DRAWN BY: RLM	DATE: 2/24/94	SCALE: 3" = 1'
PAPER SIZE: D	FINISH: PER SPECS.	HUNTER PART NO. 25	DRAWING NO. H29-D-1117

C.L. BUTTOCK

CURVE OF AREAS
 1" = AREA IN SQ.FT. X 20



C.L. BUTTOCK

C.L. BUTTOCK

C of B

250 LBS ADDITIONAL BALLAST

TRIM CORRECTION = 20.89 / 696 / 1240 = .56'

INTERNAL LEAD CASTING

ORIGINAL BALLAST TOP

PROFILE AT TOP OF BULB

SEE DWG # H29B1116 FOR REVISED INTERNAL BALLAST DETAIL

BOTTOM OF INTERNAL BALLAST

INTERSECTION OF LEAD TO F.R.P.

700 GPM BILGE PUMP

WINGLET TIP PROFILE

7 29/32" BUTTOCK

6 11/32" BUTTOCK

3 5/32" BUTTOCK

3 5/32" BUTTOCK

6 11/32" BUTTOCK

7 29/32" BUTTOCK

6.4144 TYP. SPACING

C.L. BUTTOCK