

REV	DESCRIPTION	DATE	BY	CHKD

HUNTER

PROJECT TITLE	H310 SHOAL KEEL WINGS
DRAWING NUMBER	
SECTION NO.	A
SHEET 1 OF 2	
DRAWN BY	CB
CHECKED BY	
DATE	4/24/97
SCALE	FULL
PAPER SIZE	E
SCALE	FULL

NOTE:
KEEL BOLTS AND VOIDS
ARE IDENTICAL TO THOSE
ON THE 310 DEEP KEEL

← TE

V 03

H

J

K

1.08

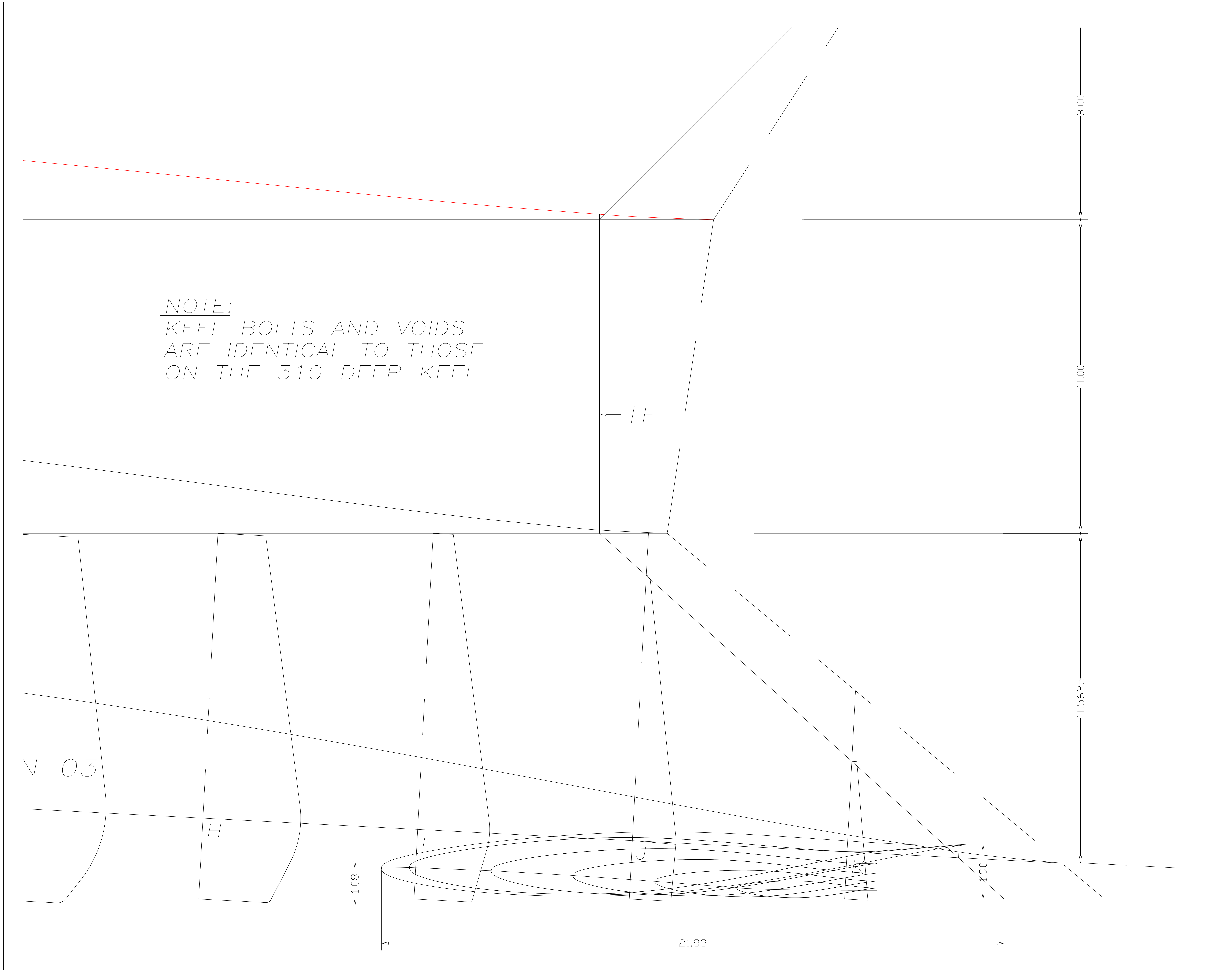
21.83

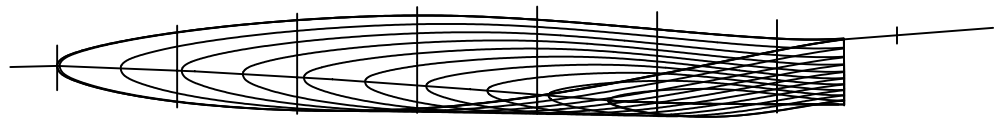
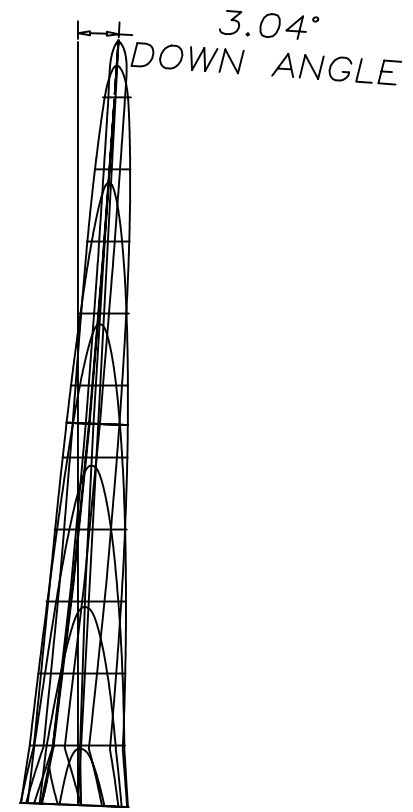
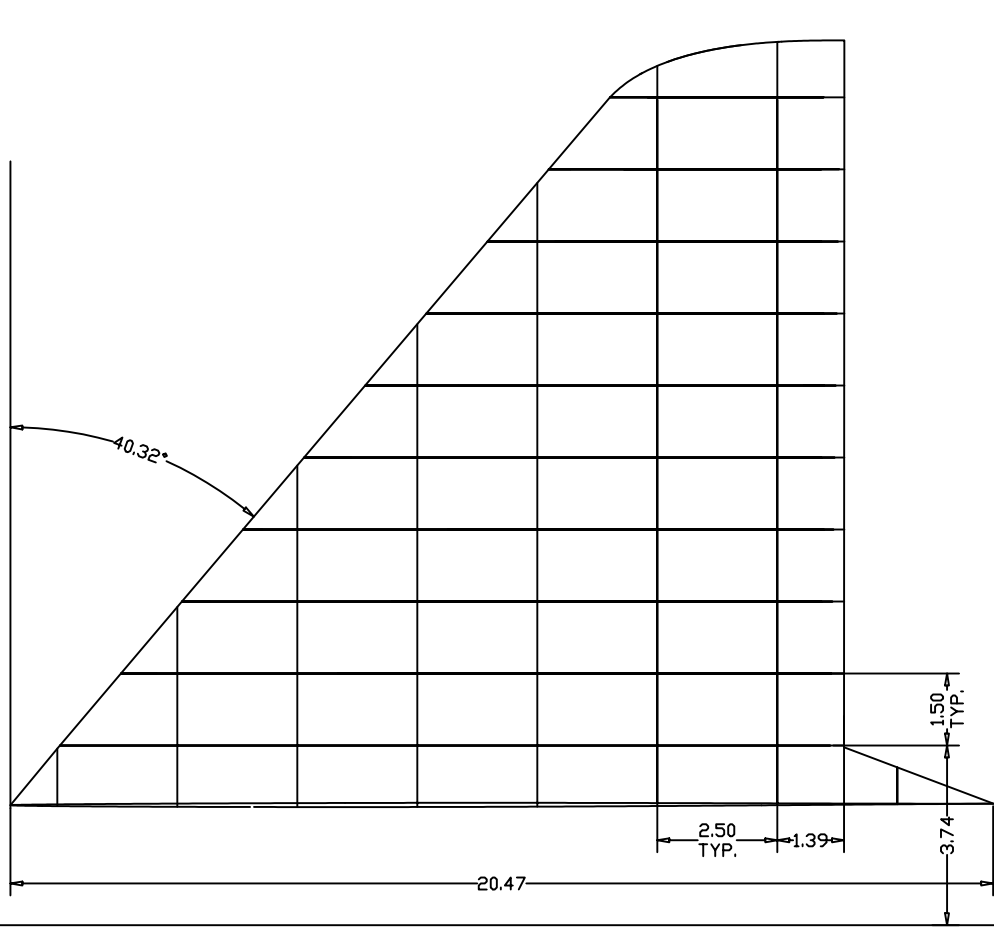
0.61

8.00

11.00

11.5625

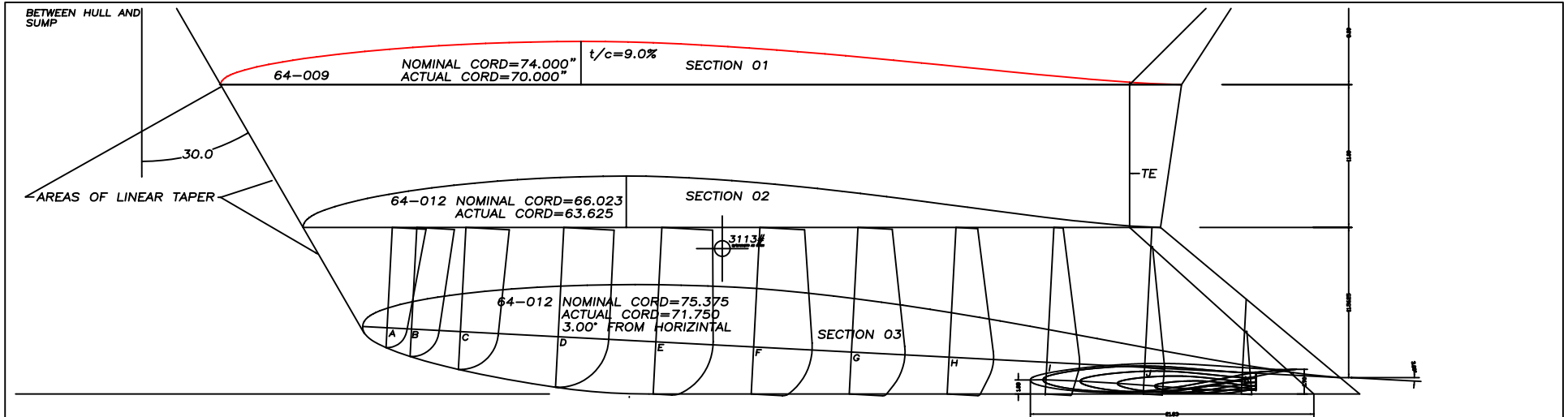




SYMBOL	REVISIONS	DATE	NAME
<small>PROPRIETARY INFORMATION This document discloses information for which HUNTER MARINE CORP. has proprietary rights.</small>			

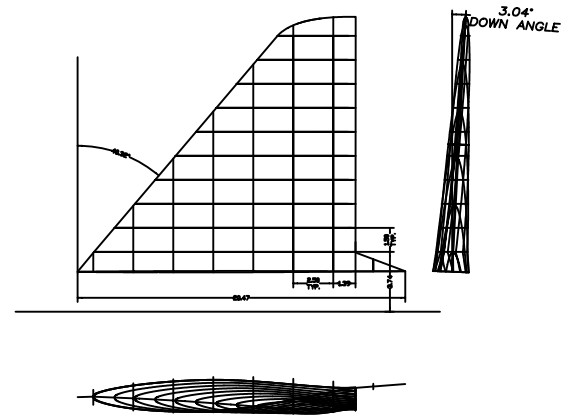
HUNTER 

5	DRAWING TITLE:		5
4	306 SHOAL KEEL WINGLETS		4
3	DRAWING NO. NONE	REVISION NO. A	3
2	SHEET 2 OF 2	HUNTER PART NO. N/A	2
1	DRAWN BY: B&R	CHECK'D BY:	1
0	DATE: 11/12/96	DATE: ___/___/___	0
REV. NO.		LOF SCALE: FULL	PAPER SIZE: A
-- DRAWING SUBMITALS --		SCALE: 3" = 1'-0"	



14.3 FT³
(3.5% SAIL AREA)

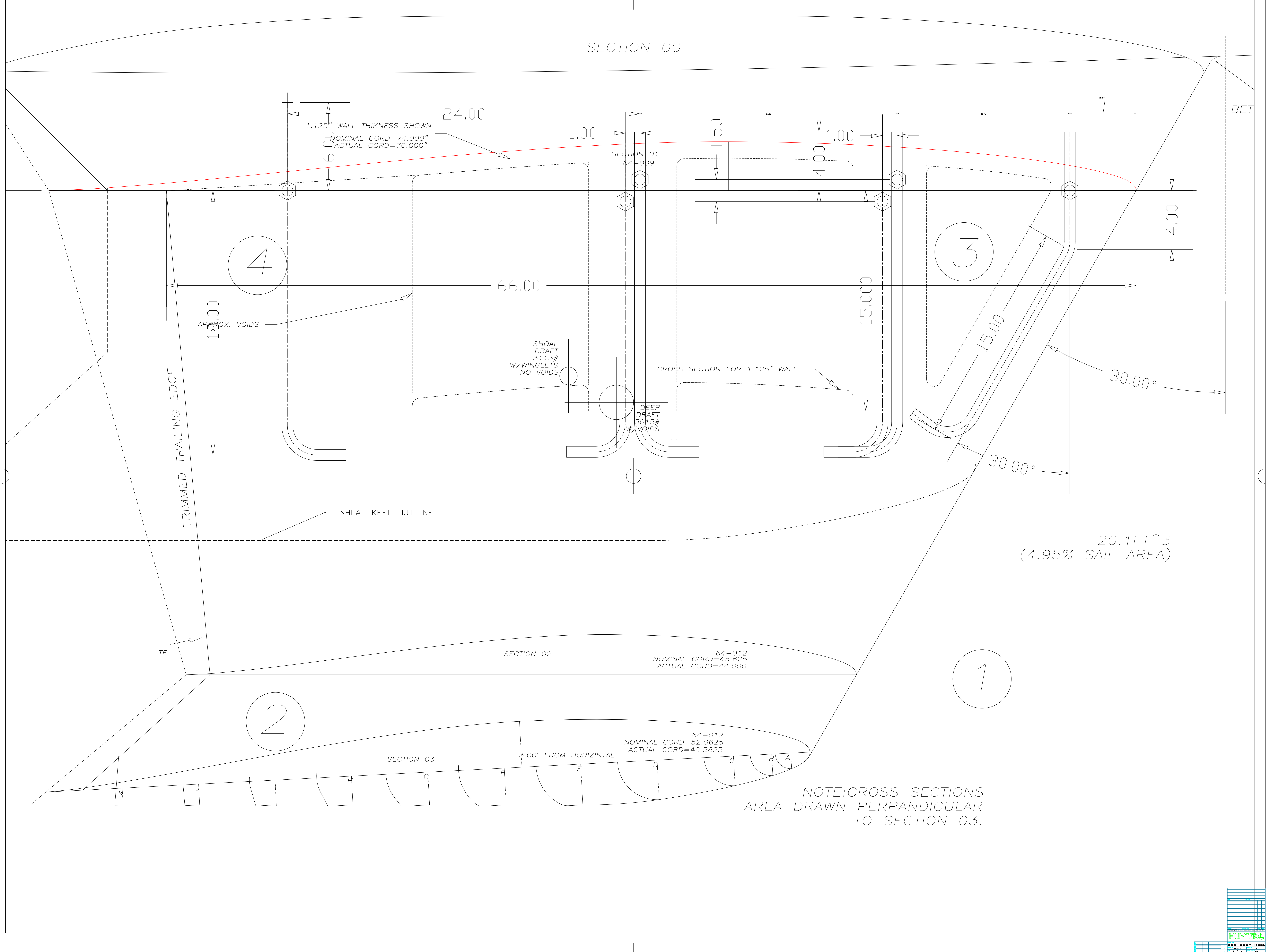
NOTE: CROSS SECTIONS
AREA DRAWN PERPENDICULAR
TO SECTION 03.



SYMBOL		REVISIONS		DATE	NAME
<small>PROPRIETARY INFORMATION: This document discloses information for which HUNTER MARINE CORP. has proprietary rights.</small>					
<h1 style="color: green;">HUNTER</h1>					
DRAWING TITLE:					
306 SHOAL KEEL WINGLETS					
DRAWING NO. 30610010		REVISION NO. A			
SHEET 1 OF 2		HUNTER PART NO. N/A			
DRAWN BY: B&R		CHECK'D BY:			
DATE: 11/12/96		DATE: ___/___/___			
REV. NO.		LOI SCALE: FULL		PAPER SIZE: A	
SCALE: 1" = 1'-0"					

5			
4			
3			
2			
1			
0			
-- DRAWING SUBMITALS --			

SECTION 00



1.125" WALL THICKNESS SHOWN
NOMINAL CORD=74.000"
ACTUAL CORD=70.000"

SECTION 01
64-009

4

3

2

1

TRIMMED TRAILING EDGE

APPROX. VOIDS

SHOAL DRAFT
3113#
W/WINGLETS
NO VOIDS

DEEP DRAFT
3015#
W/VOIDS

CROSS SECTION FOR 1.125" WALL

SHOAL KEEL OUTLINE

20.1FT³
(4.95% SAIL AREA)

SECTION 02

64-012
NOMINAL CORD=45.625
ACTUAL CORD=44.000

SECTION 03

3.00" FROM HORIZONTAL

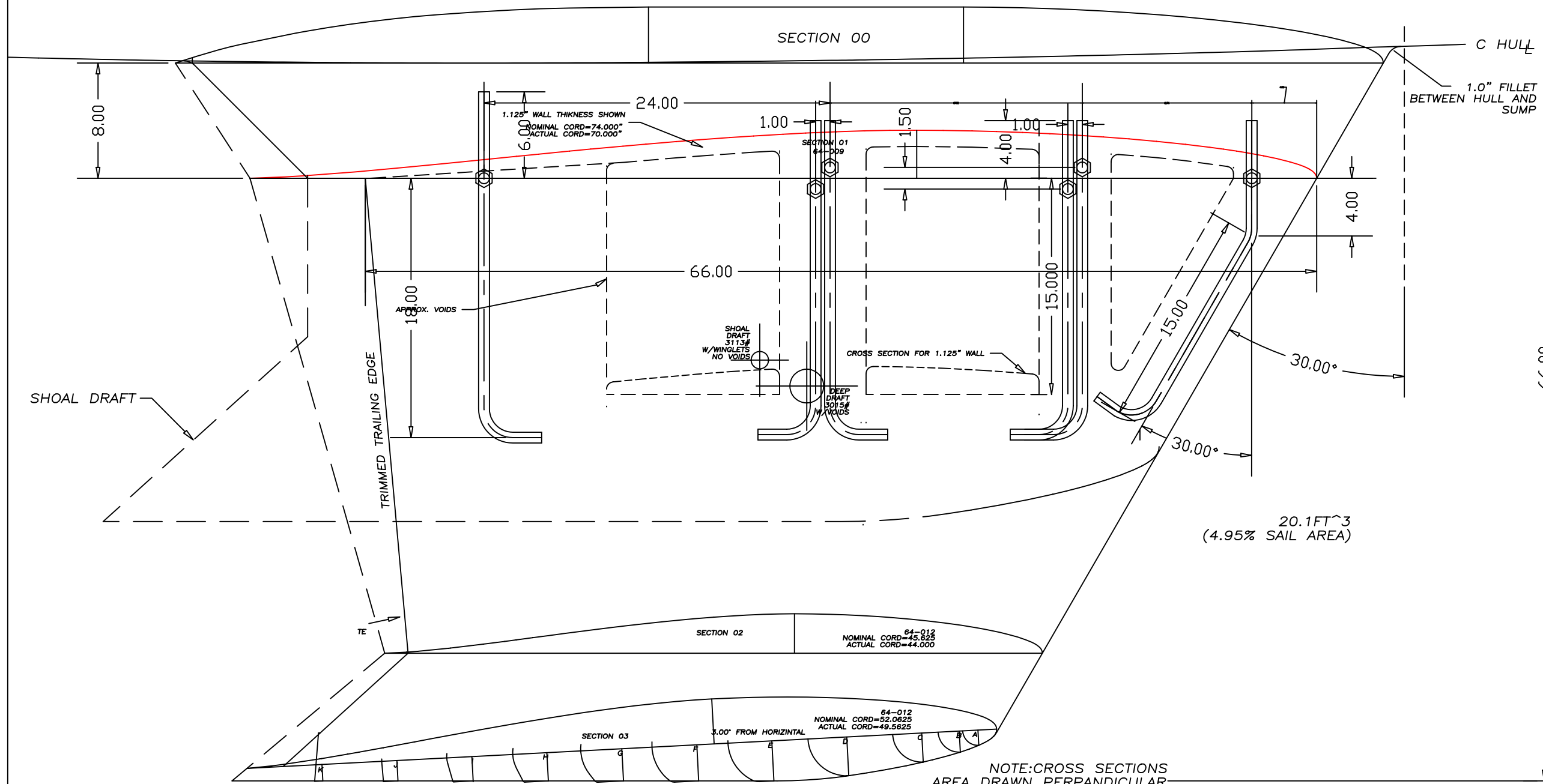
64-012
NOMINAL CORD=52.0625
ACTUAL CORD=49.5625

NOTE: CROSS SECTIONS
AREA DRAWN PERPENDICULAR
TO SECTION 03.

BET

DWL

H306 DEEP DRAFT KEEL DIMENSIONS IN INCHES



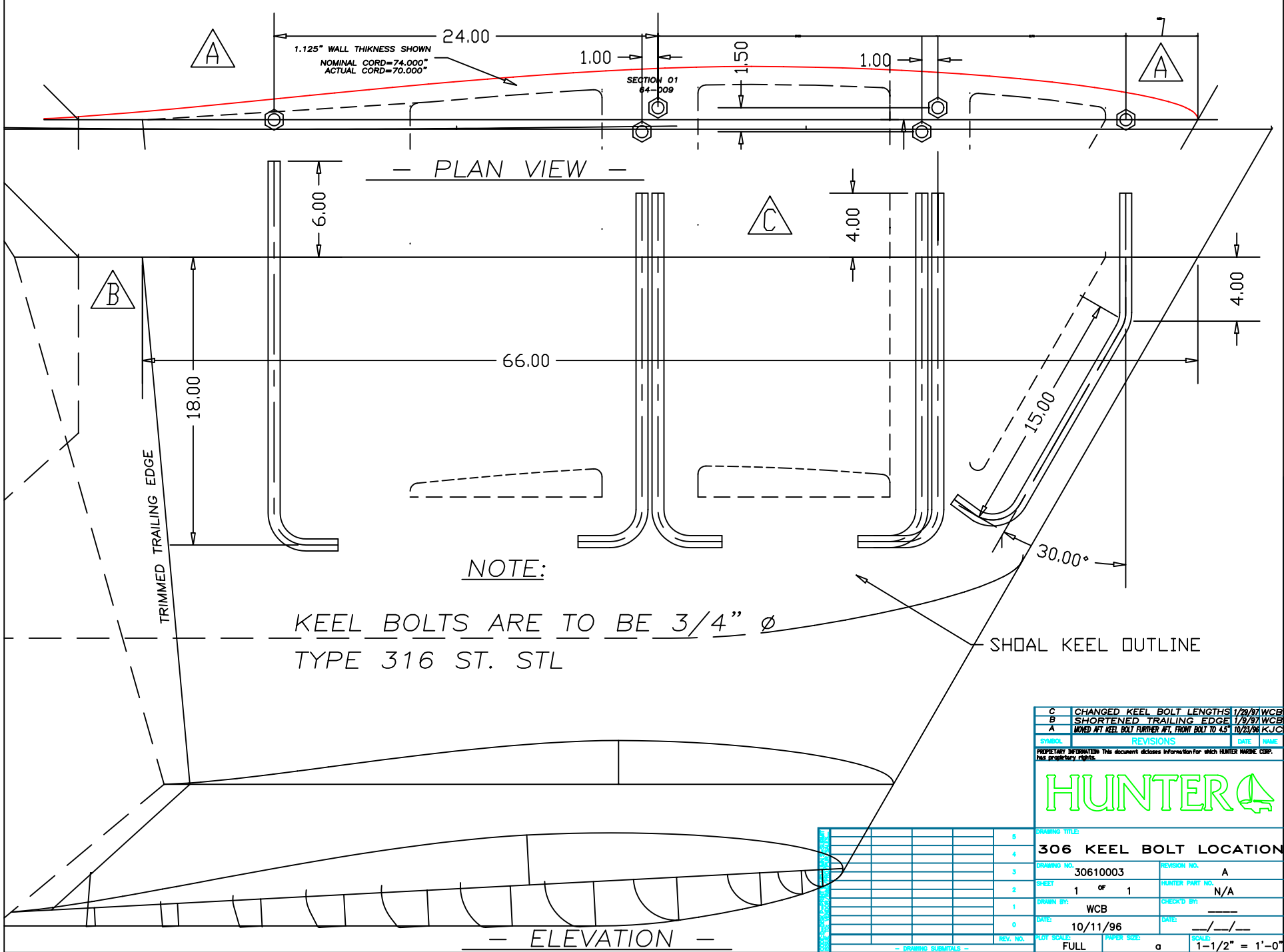
20.1FT³
(4.95% SAIL AREA)

NOTE: CROSS SECTIONS
AREA DRAWN PERPANDICULAR
TO SECTION 03.

SYMBOL	REVISIONS	DATE	NAME
<small>PROPRIETARY INFORMATION: This document discloses information for which HUNTER MARINE CORP. has proprietary rights.</small>			
DRAWING TITLE:			
306 KEEL BOLT LOCATIONS			
DRAWING NO.	NONE	REVISION NO.	A
SHEET	1 OF 1	HUNTER PART NO.	N/A
DRAWN BY:	WCB	CHECK'D BY:	
DATE:	10/10/96	DATE:	___/___/___
REV. NO.		PLOT SCALE:	FULL
		PAPER SIZE:	B
		SCALE:	1 1/2" = 1'-0"

5			
4			
3			
2			
1			
0			

- DRAWING SUBMITALS -



SYMBOL	REVISIONS	DATE	NAME
C	CHANGED KEEL BOLT LENGTHS	1/28/97	WCB
B	SHORTENED TRAILING EDGE	1/9/97	WCB
A	Moved AFT KEEL BOLT FURTHER AFT, FRONT BOLT TO 4.5"	10/23/96	KJC



REV. NO.	DATE	DESCRIPTION
5		
4		
3		
2		
1		
0		

DRAWING TITLE:	306 KEEL BOLT LOCATION	
DRAWING NO.:	30610003	REVISION NO.:
SHEET:	1 OF 1	HUNTER PART NO.:
DRAWN BY:	WCB	CHECKED BY:
DATE:	10/11/96	DATE:
REV. NO.:		PAPER SIZE:
	FULL	a
		SCALE:
		1-1/2" = 1'-0"