

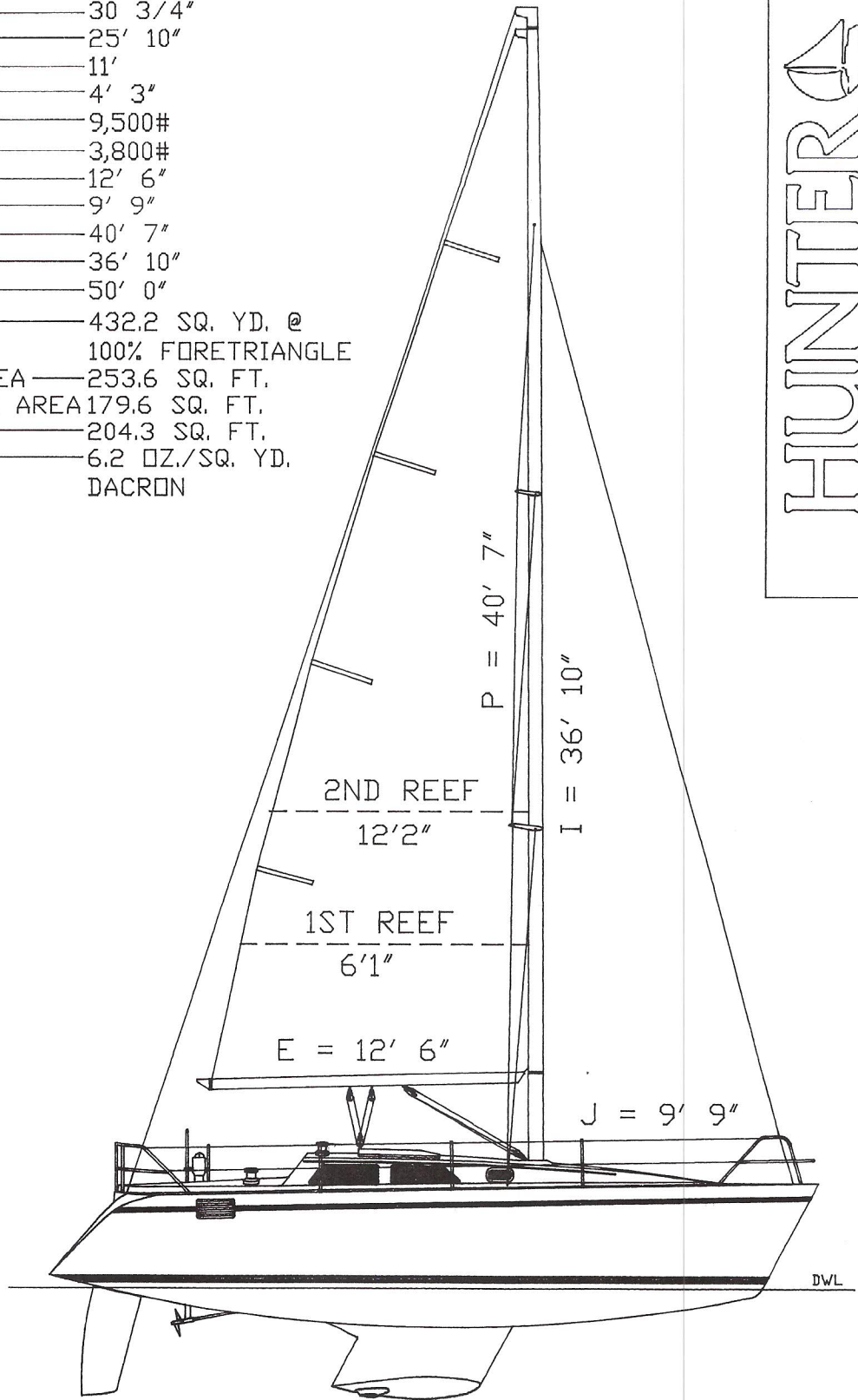
H30 G - 1988**RUNNING RIGGING**

QTY DESCRIPTION	SIZE	OTHER INFO. AND SHACKLE	LENGTH
1 MAIN HALYARD	7/16" L.S.	W/3900-112	101'
1 JIB HALYARD	3/8" L.S.	W/721-2	83'
1 MAIN SHEET	3/8" L.S.	EYE SPLICE ONE END	52'
2 JIB SHEET	7/16" L.S.	B.B.E.	35'
1 TOPPING LIFT	5/16" L.S.	B.B.E.	86'
1 REEF LINE	3/8" L.S.	B.B.E.	45'
1 VANG LINE	3/8" L.S.	B.B.E.	30'
2 TRAVELER CONTROL LINE	3/8" L.S.	EYE SPLICE ONE END	15'

STANDING RIGGING

QTY DESCRIPTION	WIRE SIZE&TYPE	FITTING FITTING	O/A DIM.
1 HEADSTAY	7/32" - 1X19	M.EYE / 7-12-12	39' 0"
1 BACKSTAY "UPPER" ATTACHED TO DOUBLE SPLITTER PLATE	5/32" - 1X19	CENTER OF EYE / STEM BALL W/CUP BC-7	36' 6"
2 UPPERS	1/4" - 1 X 19	STEM BALL W/BACKING SHELL 8-16-16	37' 9"
2 INTERMEDIATES	3/16" 1 X 19	STEM BALL W/CUP BC-7 6-12-12	27' 6"
2 LOWERS	1/4" - 1 X 19	STEM BALL W/CUP 8-16-16	14' 3 1/2"
2 BACKSTAY BRIDLE	5/32" 1 X 19	M.EYE 5-10-10	12' 2 3/4"

LDA	30 3/4"
LWL	25' 10"
BEAM	11'
DRAFT	4' 3"
DISPLACEMENT	9,500#
BALLAST	3,800#
E	12' 6"
J	9' 9"
P	40' 7"
I	36' 10"
MH FROM DWL	50' 0"
SAIL AREA	432.2 SQ. YD. @
	100% FORETRIANGLE
MAIN SAIL AREA	253.6 SQ. FT.
FORETRIANGLE AREA	179.6 SQ. FT.
110% JIB	204.3 SQ. FT.
SAIL CLOTH	6.2 OZ./SQ. YD.
	DACRON



HUNTER

H30 SAIL PLAN H30A2613

SAILS & RIGGING

Tuning the Conventional Fractional Rig (Hunter 27OB, 27IB, 28, 30, 33.5, 35.5, and Legend 37)

Tuning the Rigging:

After raising your mast, attach the headstay, backstay, upper shrouds and lower shrouds. Set the headstay turnbuckle at half open and then tighten backstay turnbuckle to medium tension.

To center the mast athwartships, start with only slight tension on the upper and lower shrouds. Check that the mast is centered in the boat by measuring from the masthead to the chainplates with a steel tape measure hoisted completely up the main halyard. Adjust the upper shroud until the measurements port and starboard are exactly the same. Now the spar is plumb athwartships, tension both uppers equally, counting turnbuckle revolutions as you go. Tighten uppers until you have approximately one ~~inch~~^{degree} of "~~prebend~~^{take}" fore and aft in the mast. This is achieved because the swept spreaders will push the middle part of the mast forward as you increase tension of the uppers.

Now tighten the lower shrouds evenly, making sure the mast remains straight athwartship. Sight up the luff groove to assure this straightness. Lower shrouds should end up almost as tight as the uppers. (The uppers should always be the tightest.) The 28, 30, 33.5, 35.5, and Legend 37 are equipped with double spreaders. The three shrouds should be made progressively tighter toward the top of the rig; the uppers should be the tightest of all. Tighten backstay to a taut position: perhaps eight to ten turns past your original tension.

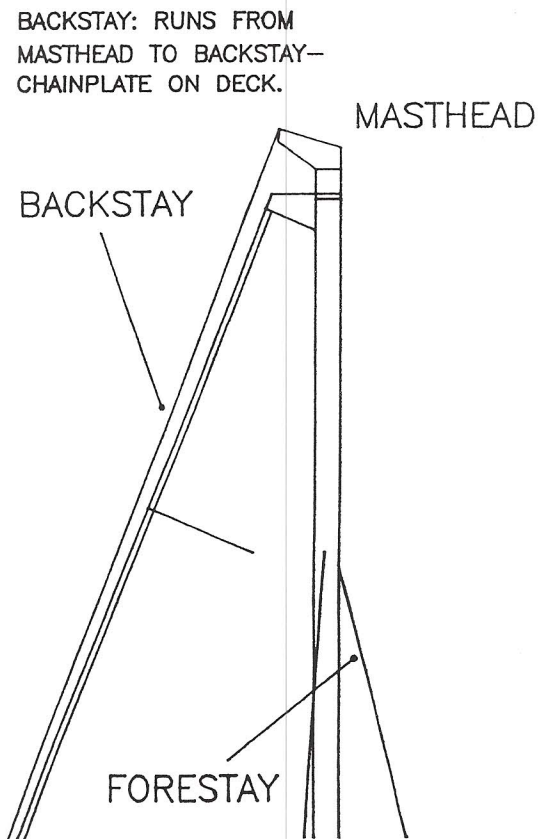
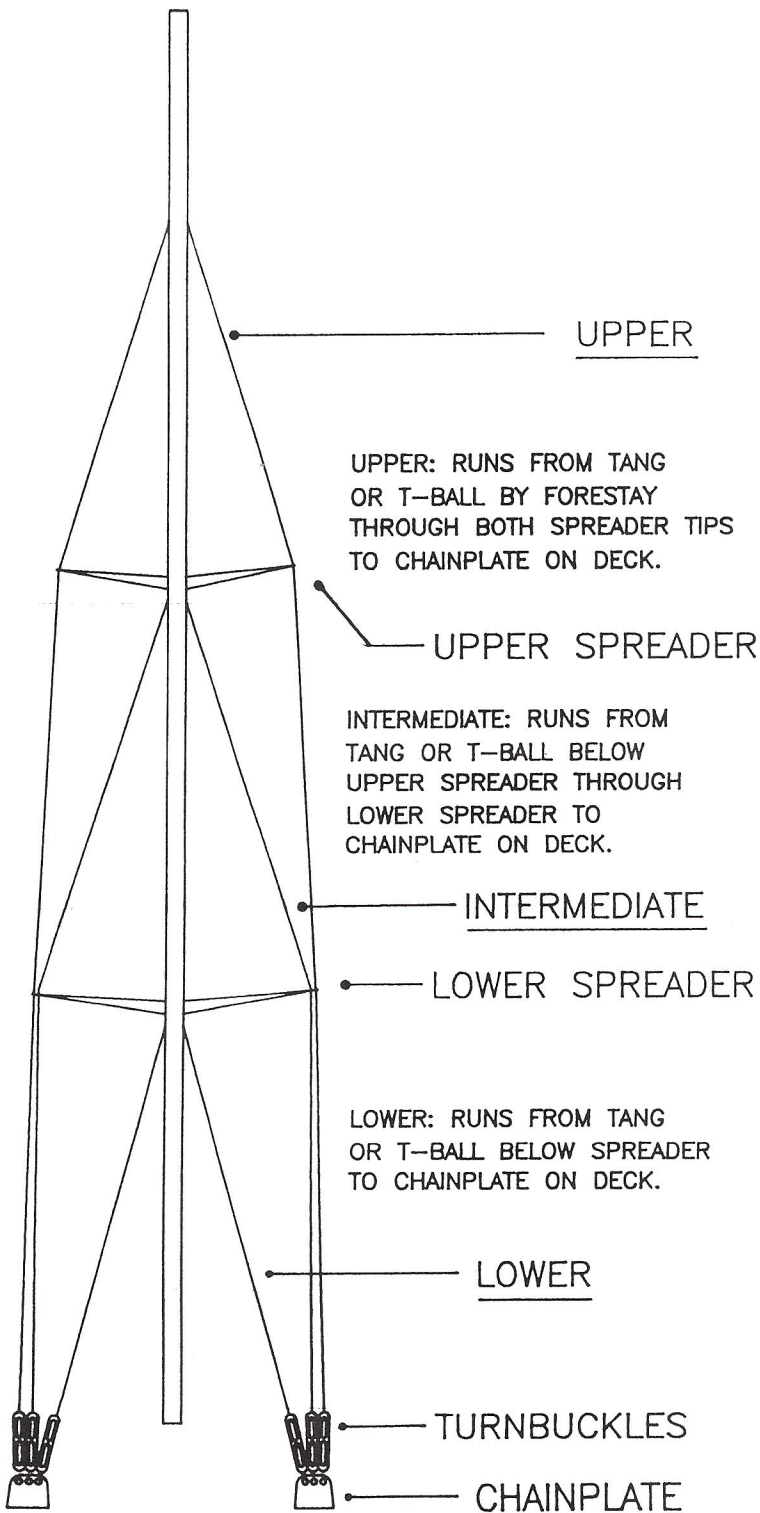
Check the mast tuning by sailing in medium winds (10-12 knots). Sometimes fine tuning the upper and lower shrouds is necessary when the spar is loaded in sailing conditions. Sail on both tacks, sighting up the luff groove to check athwartship straightness. Both upper and lower shrouds should be taut on the leeward side.

When mast tuning is complete, install cotter pins in all turnbuckles and tape over sharp edges of the cotter pins with chafe tape. (Refer to the drawing on Conventional Fractional Rig).

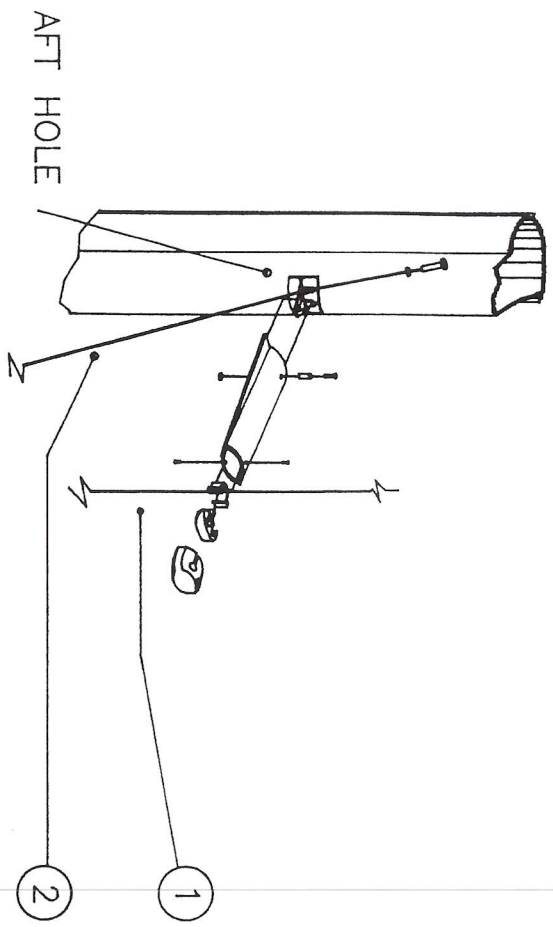
HUNTER

DOUBLE SPREADER FRACTIONAL RIG W/ SWEPT BACK SPREADERS

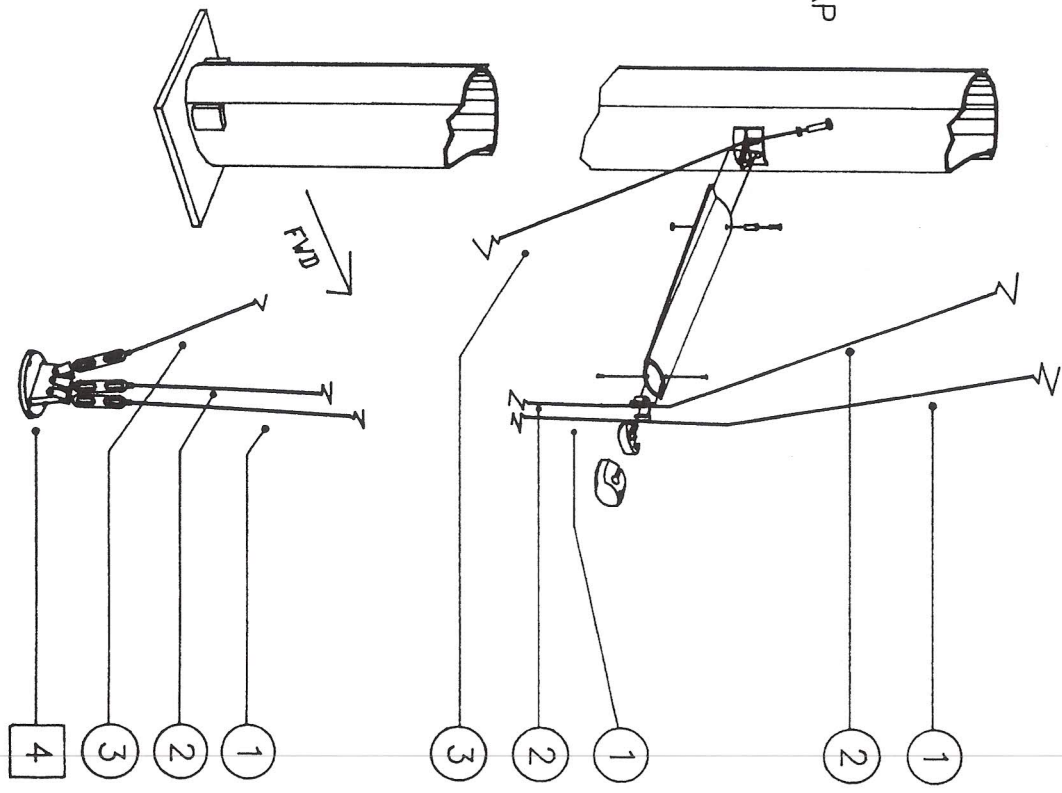
GEN2601A



FORESTAY RUNS FROM A POINT APPROXIMATELY 20% BELOW MASTHEAD TO STEMHEAD FITTING.



- ① UPPER OR CAP SHROUD
- ② INTERMEDIATE
- ③ LOWER
- ④ CHAIN PLATE

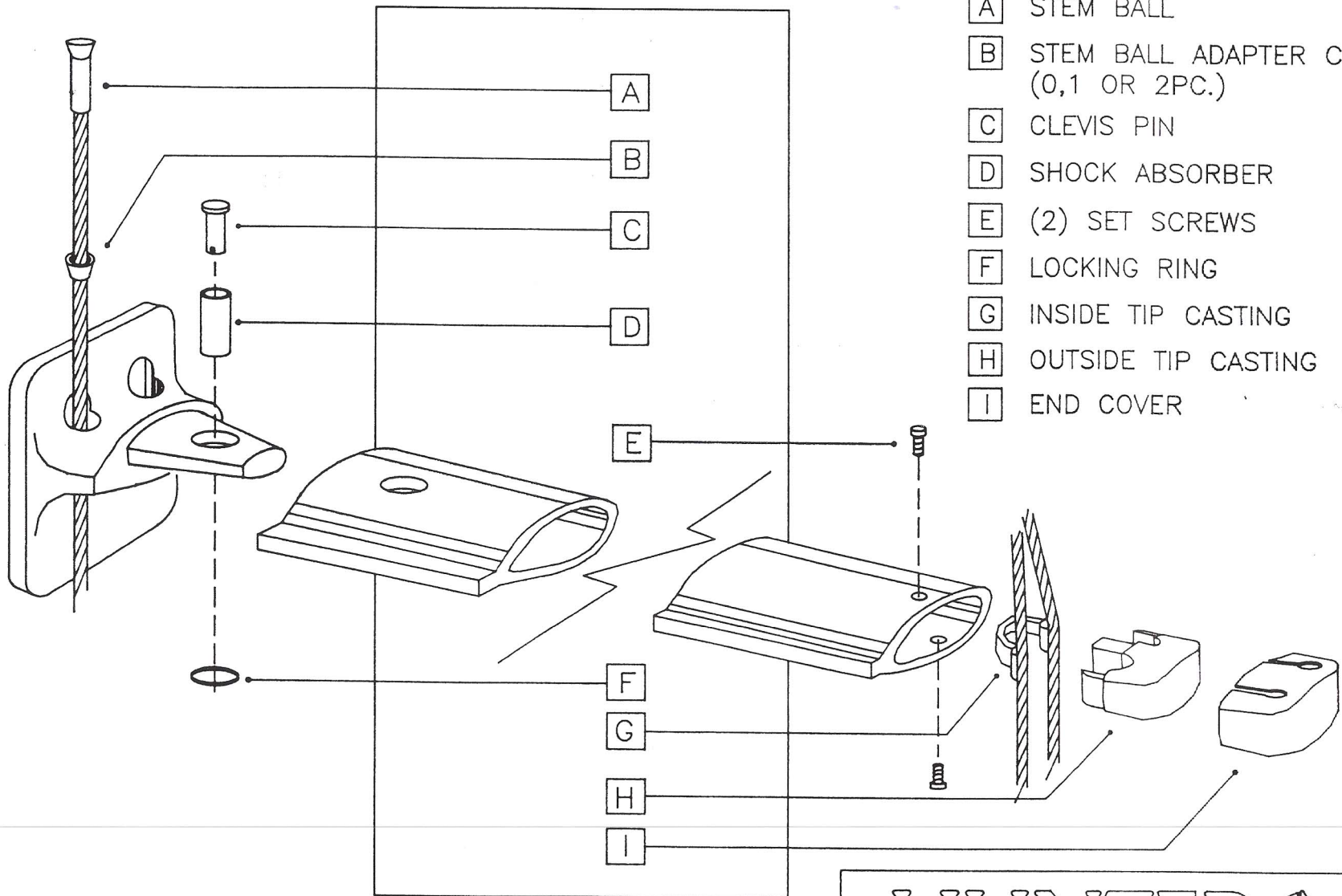


HUNTER 

ISOMAT RIGGING ASSEMBLY

GEN2603A

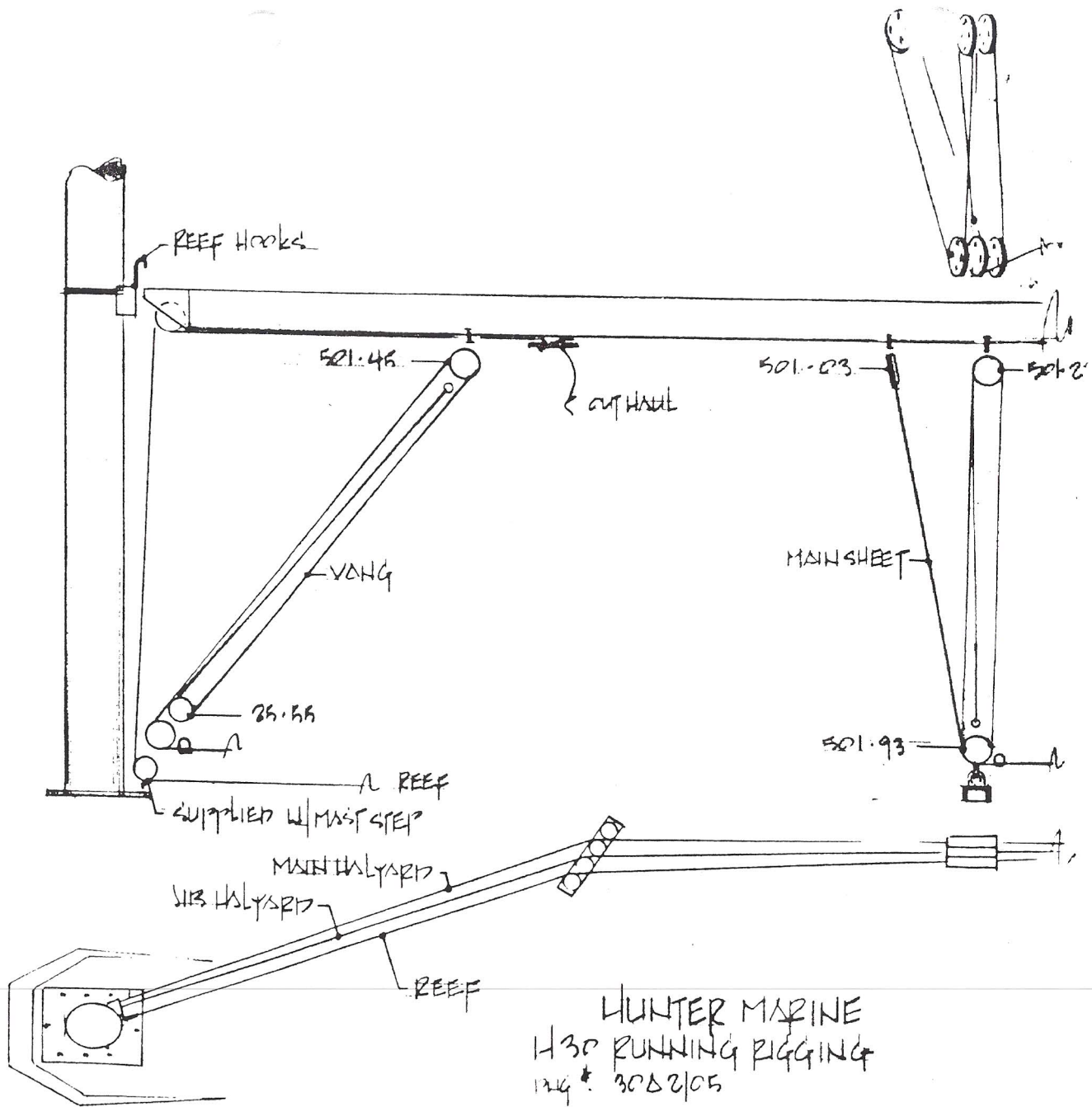
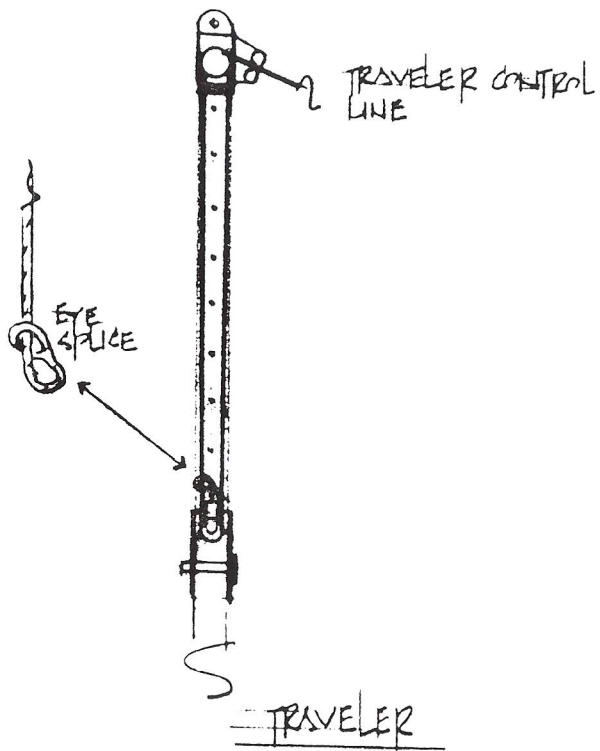
24



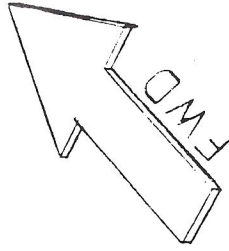
HUNTER 

ISOMAT SPREADER DETAIL GEN2607A

24



HUNTER MARINE
 H30 RUNNING RIGGING
 INQ # 3082105

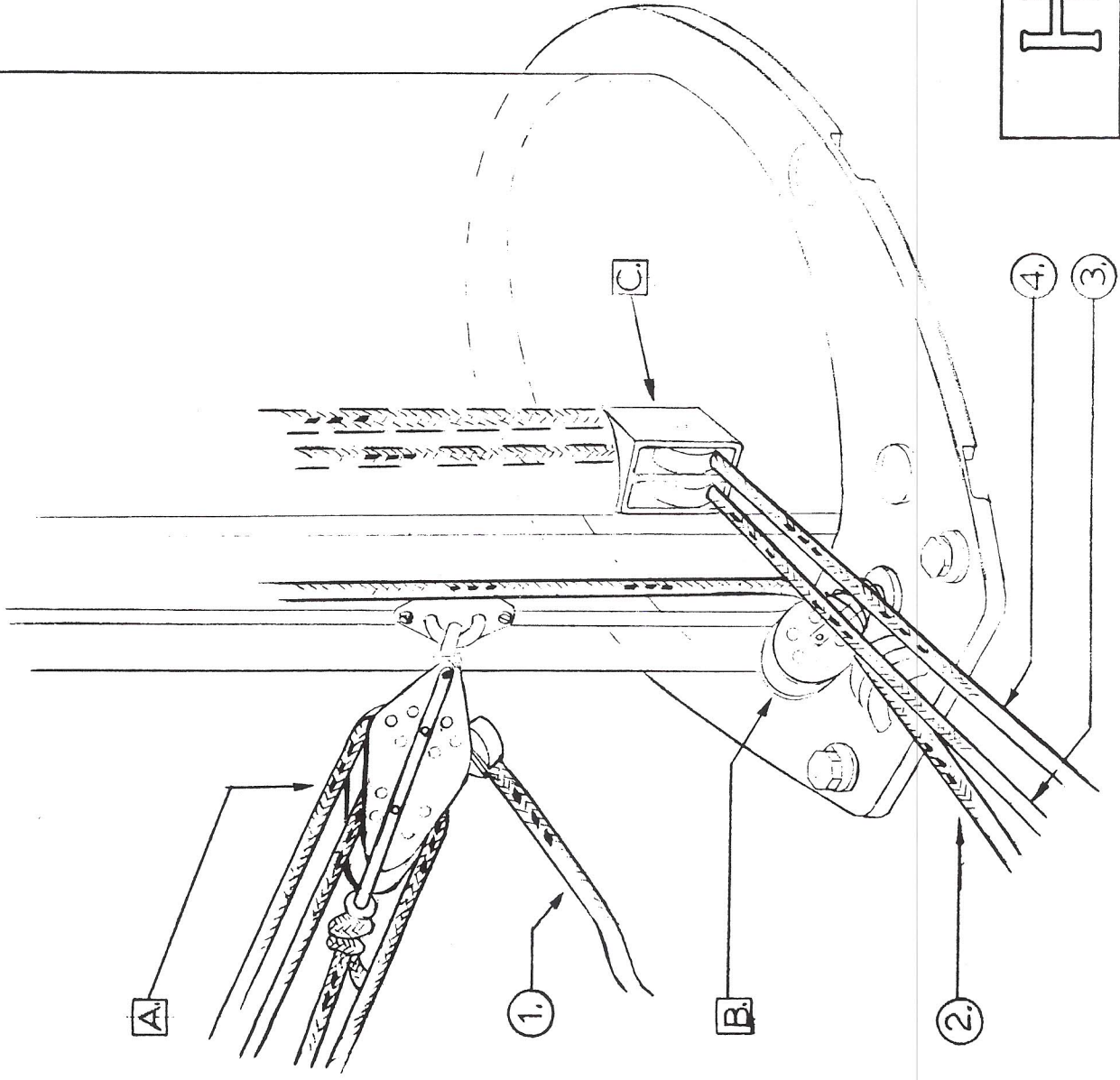


Lines

- ① Vang
- ② Reef line
- ③ Jib halyard
- ④ Main halyard

Hardware

- A Fiddle block w/ becket & cam cleat Schaefer #25 55
- B Single blk. w/ spring
- C Mast exit

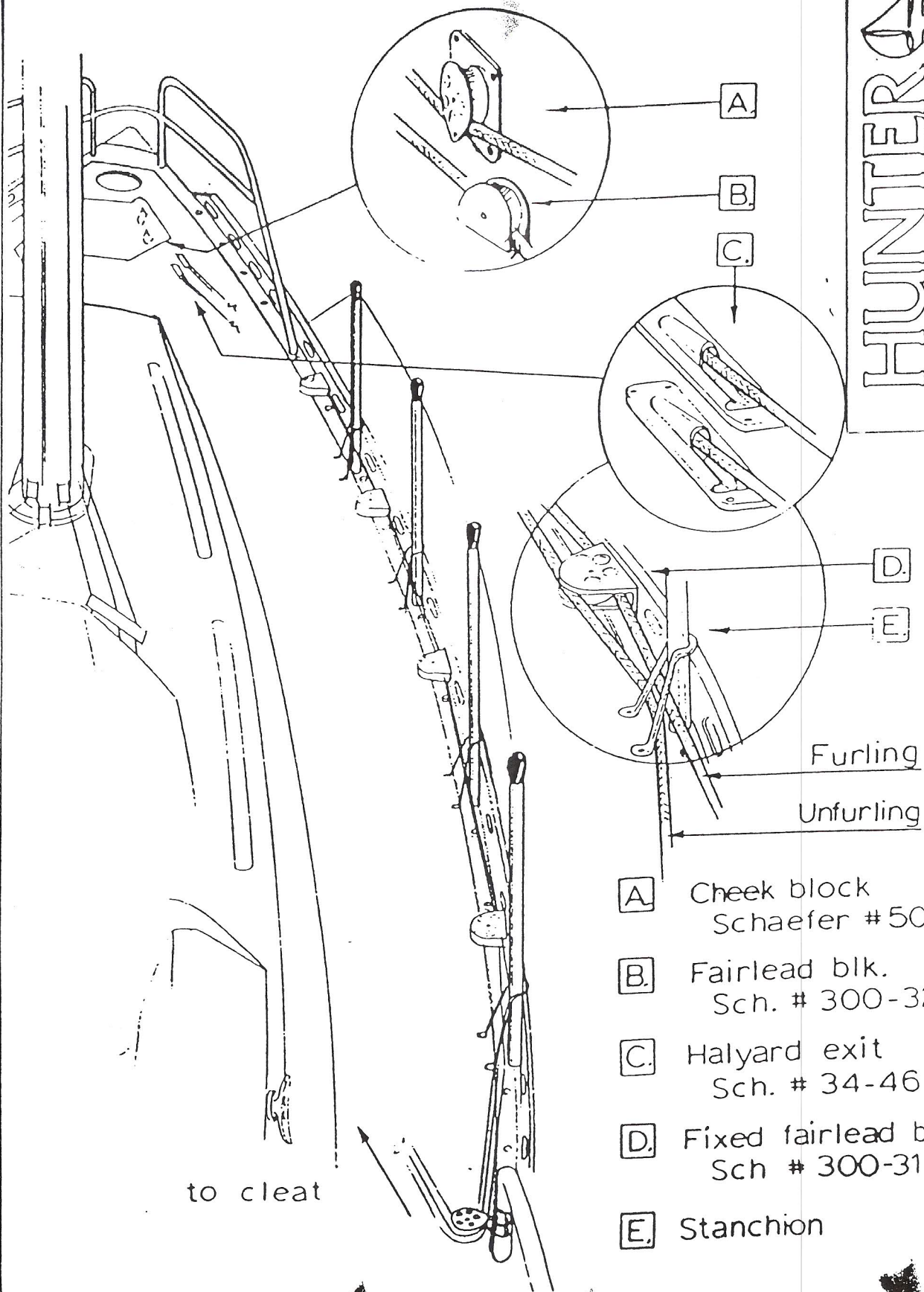


HUNTER

Mast Step Detail H30A2620

HUNTER

FURLING SYSTEM GENA2625



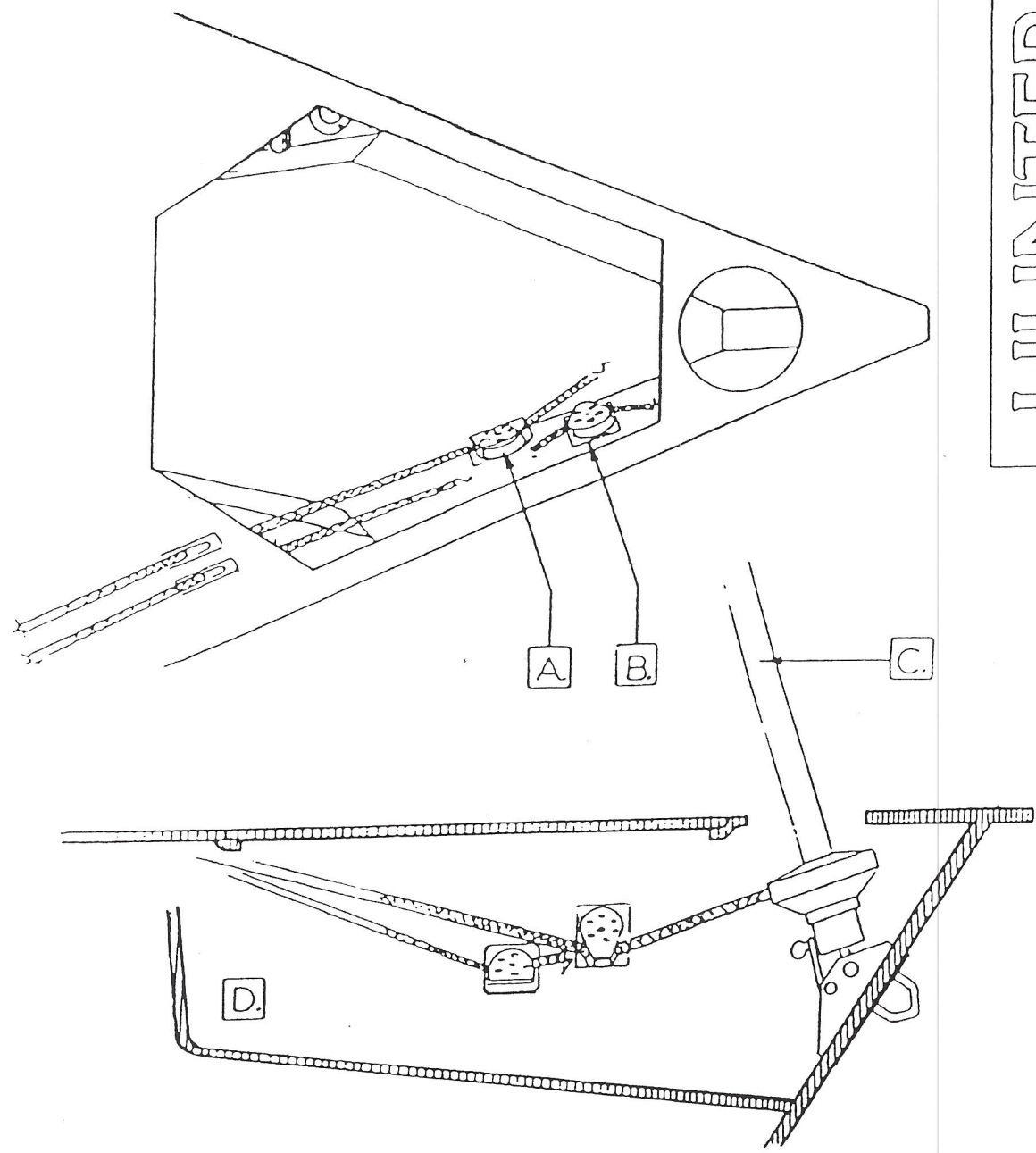
to cleat

Furling
Unfurling

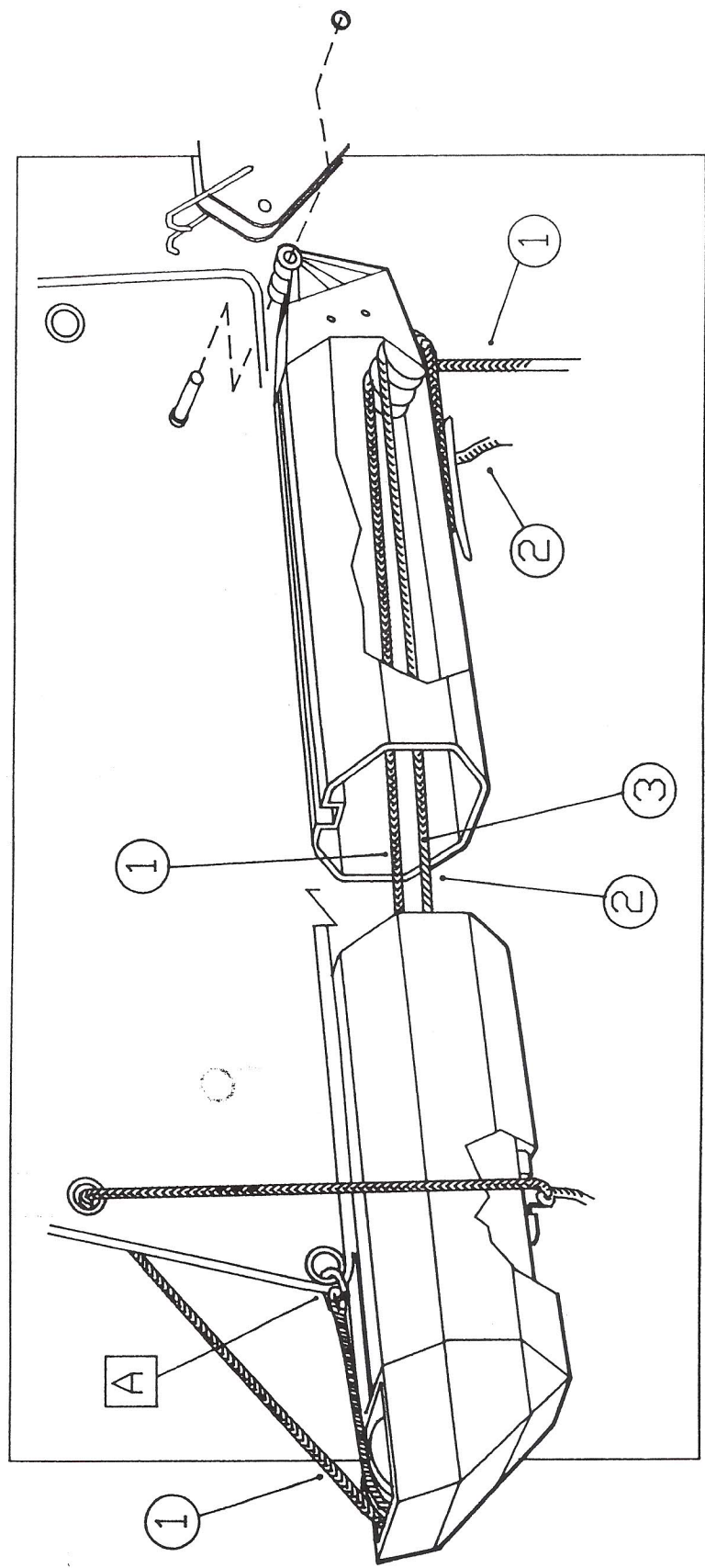
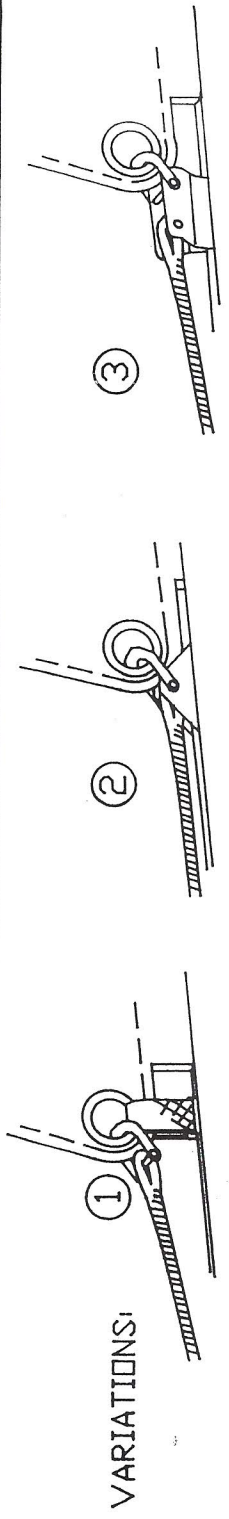
- A Cheek block
Schaefer #501-39
- B Fairlead blk.
Sch. # 300-32
- C Halyard exit
Sch. # 34-46 (2)
- D Fixed fairlead blk.
Sch # 300-31 (4)
- E Stanchion

HUNTER

FURLING GENA2624



- A Fairlead block Schaefer #300-32
- B Cheek blk. Sch. #501-39
- C Furling
- D Anchor well

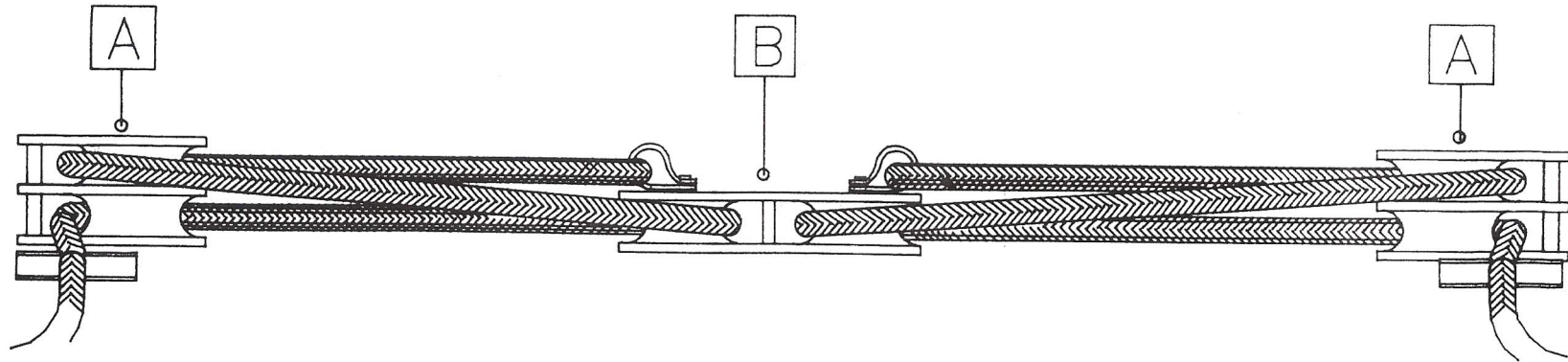


- ① REEF LINE
- ② OUTHAUL
- ③ TRANSITION FROM OH WIRE - OH LINE
- A D SHACKLE

HUNTER

BOOM AND REEF LAYOUT
CONVENTIONAL REEF

GEN2608A

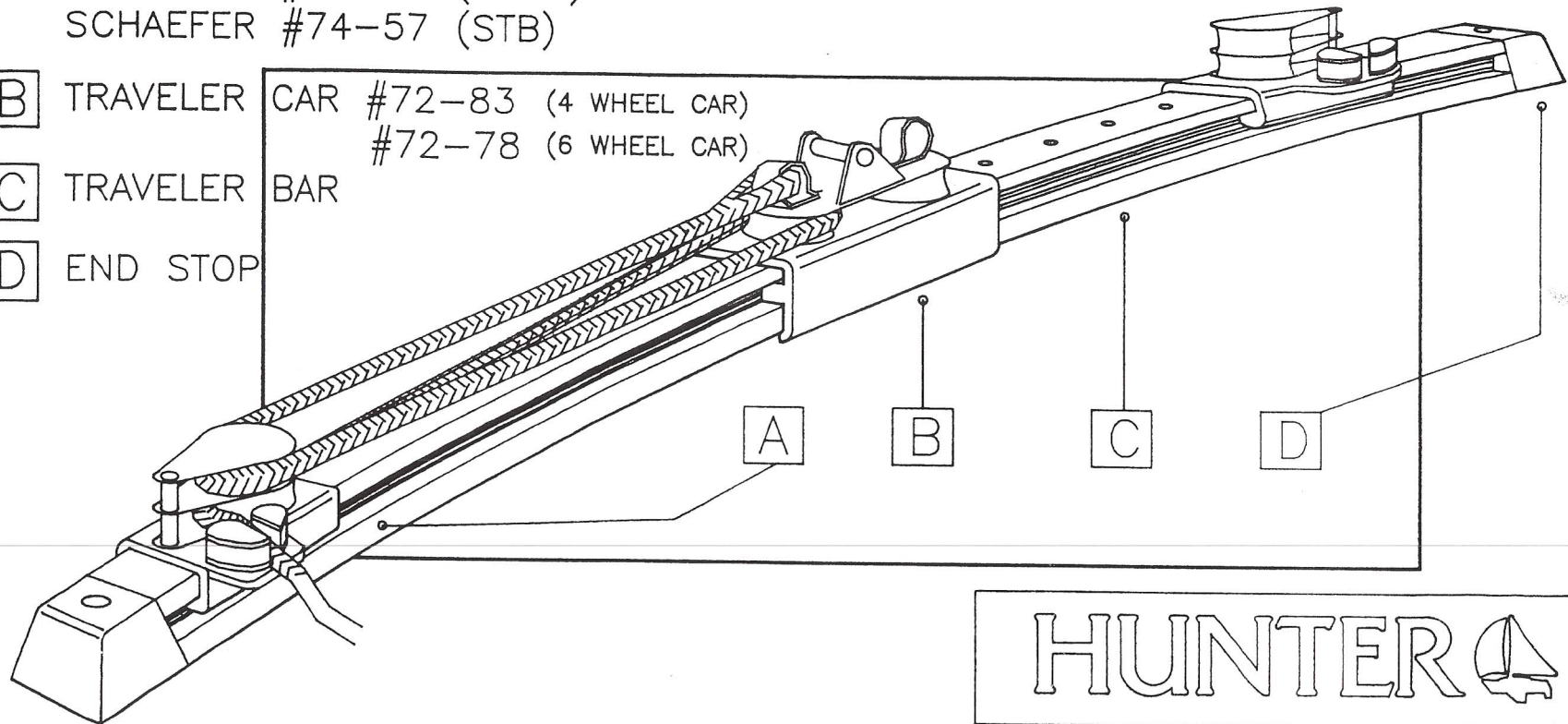


A DOUBLE BLOCK WITH CAM CLEAT
 SCHAEFER #74-56 (PORT)
 SCHAEFER #74-57 (STB)

B TRAVELER CAR #72-83 (4 WHEEL CAR)
 #72-78 (6 WHEEL CAR)

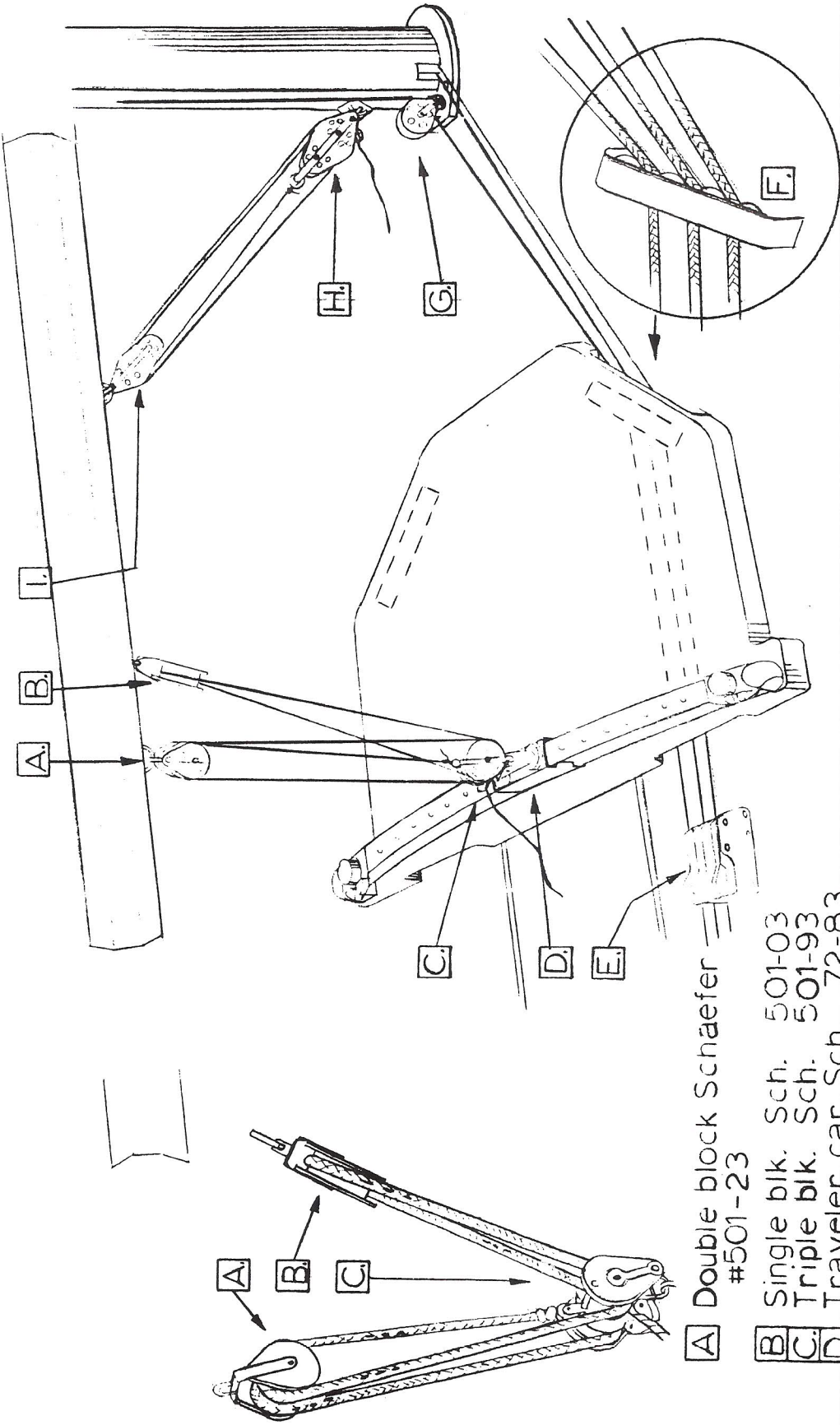
C TRAVELER BAR

D END STOP



HUNTER 

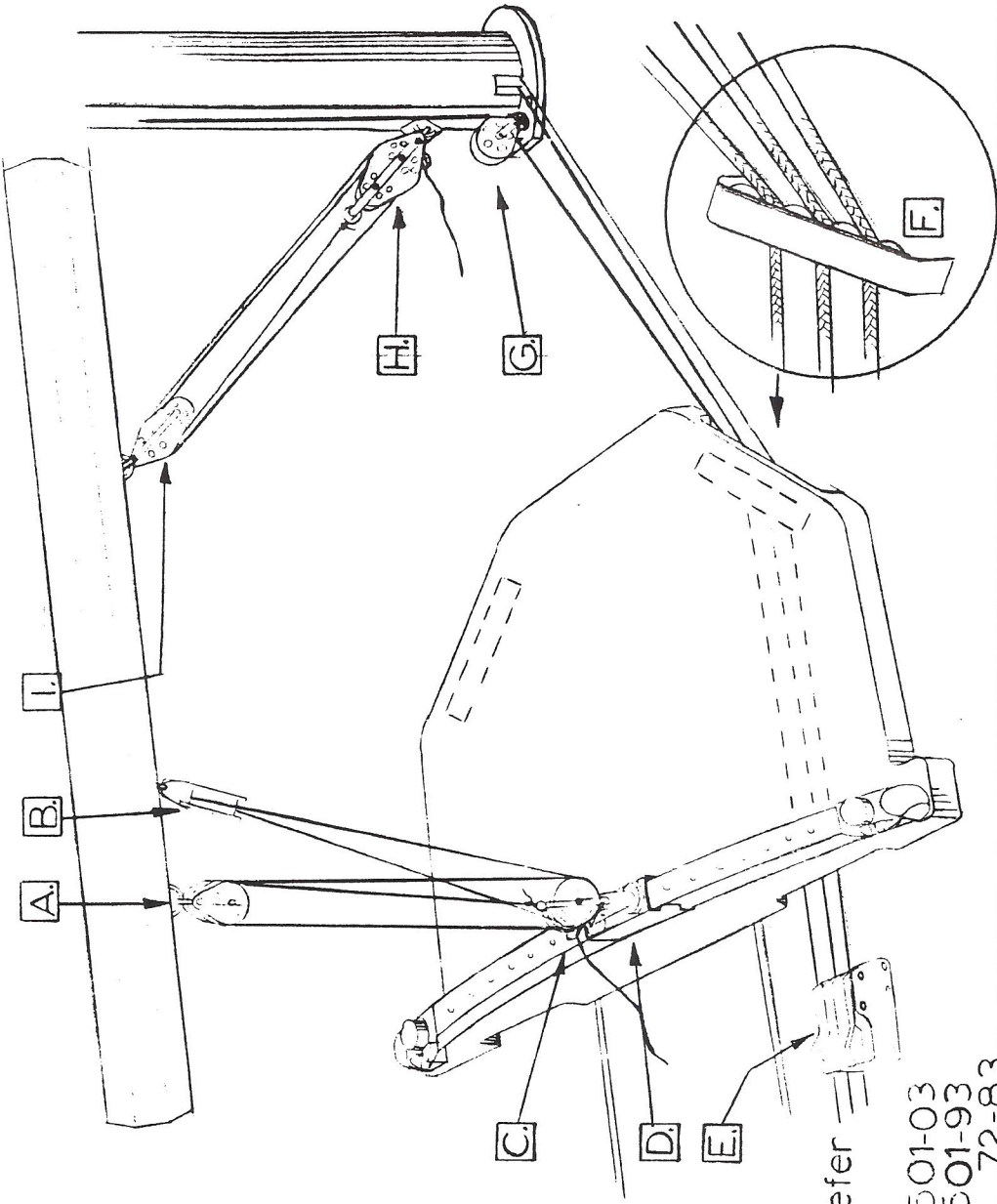
TRAVELER DETAIL GEN2611A



- A** Double block Schaefer #501-23
- B** Single blk. Sch. 501-03
- C** Triple blk. Sch. 501-93
- D** Traveler car Sch. 72-83
- E** Sheet stopper Garhauer
- F** Deck organizer Gar. (4 sheaves)
- G** Sgl. blk. w/ eye & spring Gar.
- H** Fiddle w/ becket & cam cleat Sch. 25-55
- I** Fiddle Sch. 501-45

HUNTER

Running Rigging H30A2619



- A** Double block Schaefer #501-23
- B** Single blk. Sch. 501-03
- C** Triple blk. Sch. 501-93
- D** Traveler car Sch. 72-83
- E** Sheet stopper Garhauer
- F** Deck organizer Gar. (4 sheaves)
- G** Sgl. blk. w/ eye & spring Gar.
- H** Fiddle w/ becket & cam cleat Sch. 25-55
- I** Fiddle Sch. 501-45

HUNTER

Running Rigging H30A2619