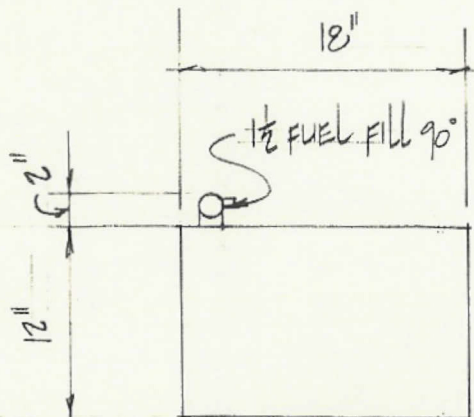
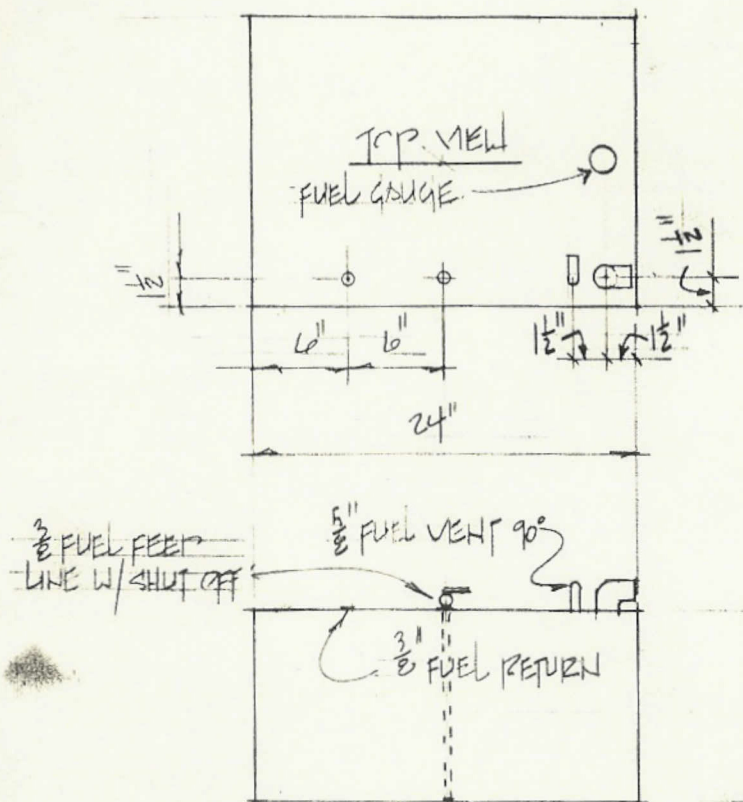


FRENCH BOATS ONLY: ALL TANKS ONLY

ADD BAFFLE F. MAX 400 MM ATHWART-SHIPS BETWEEN BAFFLE & WALLS.

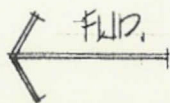


FRENCH SPEC'S ADDED

OW 4-90

REVISION: MOVE FUEL P.I. TO  $\phi$  OF TANK GENE 9-14-88

REVISION: ADD FUEL GAUGE GENE 11-2-87



NOTES:

MATERIAL: ROPR MOLDED PLASTIC

QUANTITY: (1) PER BOAT

CAPACITY: APPROX. 22 gal

USE ON H33 V32 & H35.5

HUNTER MARINE

SCALE: 1" = 1'-0"

APPROVED BY:

DRAWN BY GENE

DATE: 4-7-87

REVISED

REVISION:

ELBOW FUEL VENT

1-5-87

GENE

H33 FUEL TANK

DRAWING NUMBER

33A1902