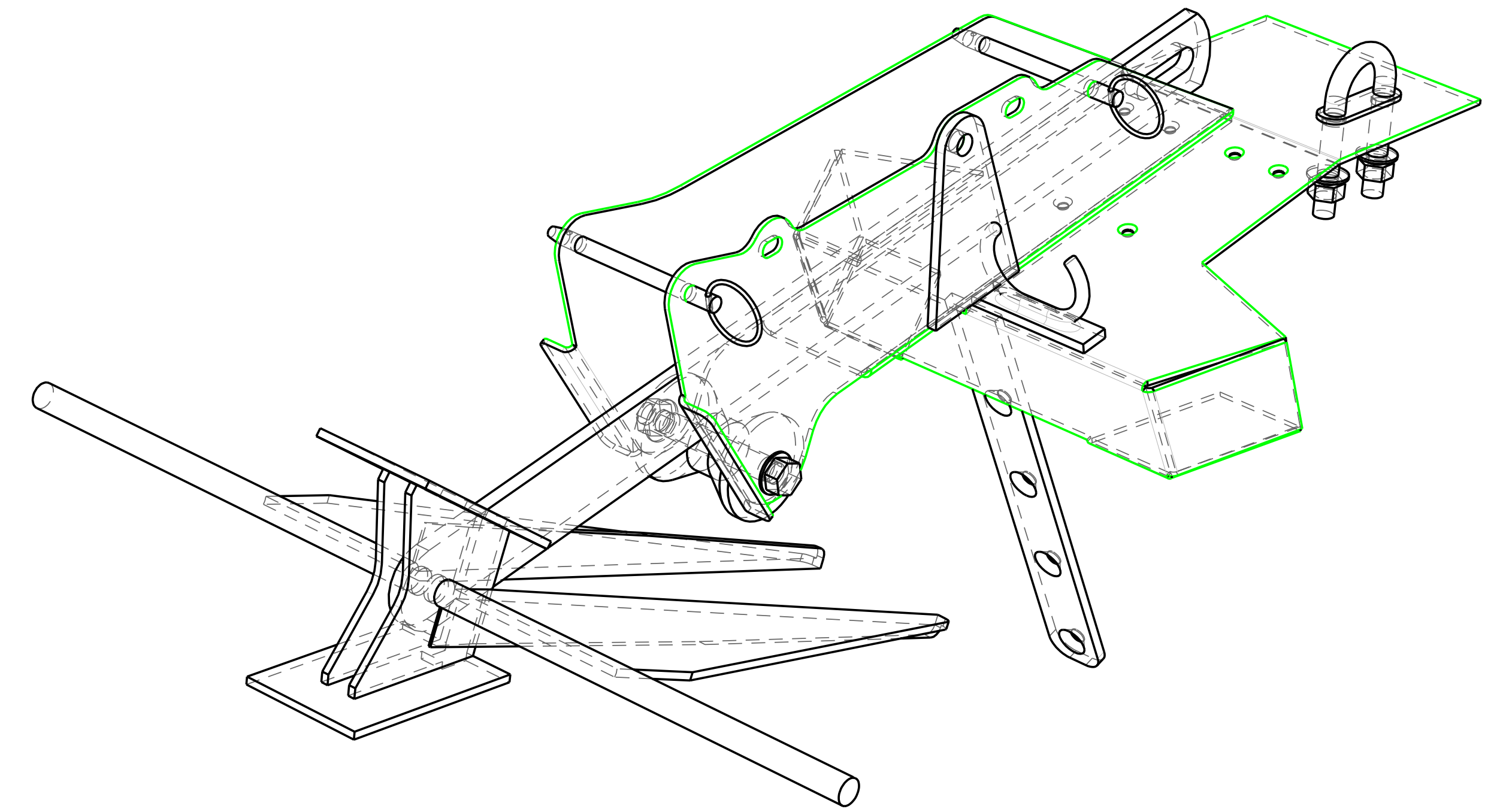
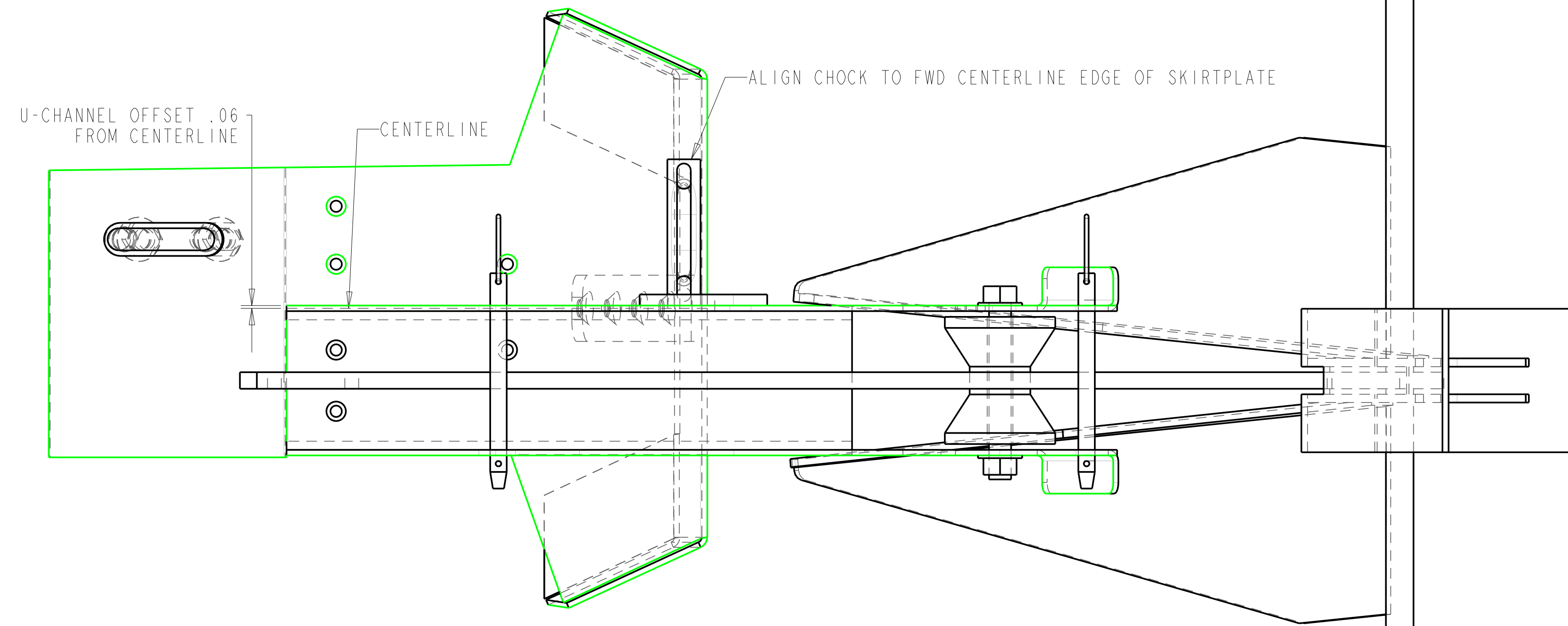
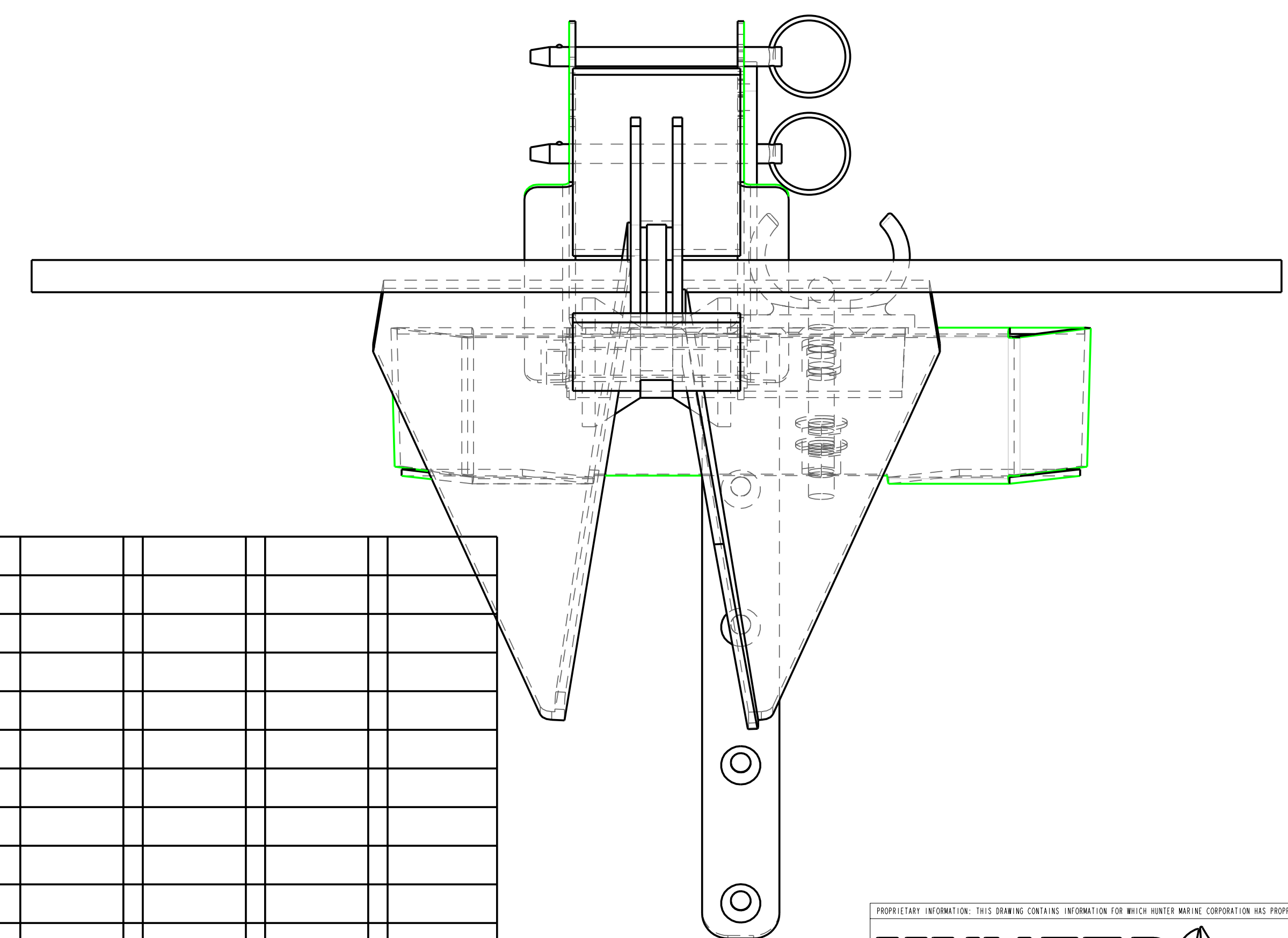
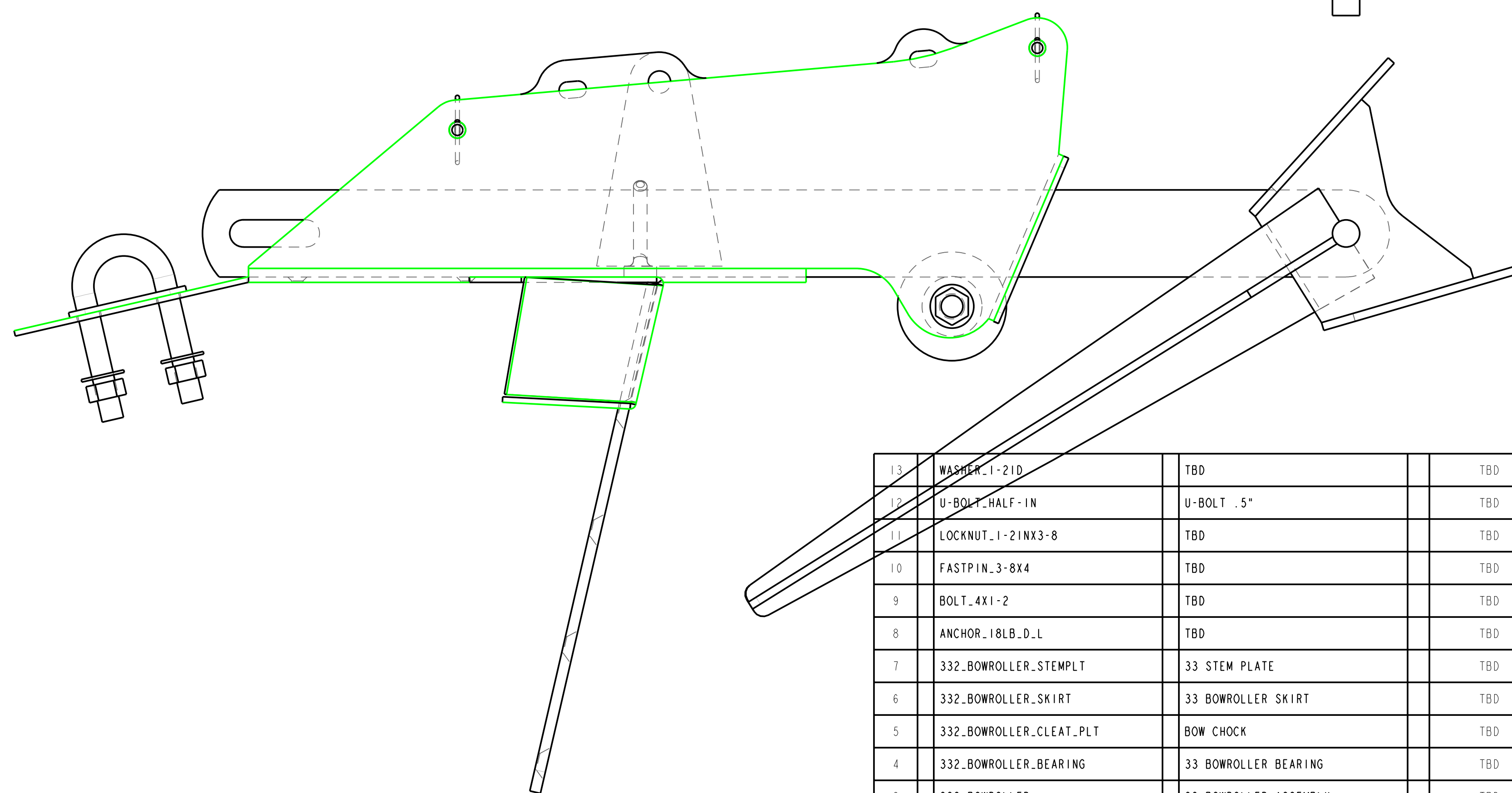


SYMBOL	REVISIONS	DATE	ENG
A	PRODUCTION PART HULL #3+	10/20/03	JTM
B	ADD 3/32" RADIUS TO ALL EDGES	2/14/05	JLK
C	UPDATE 0.5 RIGGING HOLE TO 0.515, SHEET 2	4/8/05	JLK



NOTE: 3/32 RADIUS ALL EDGES OF ROLLER PLATES



13	WASHER_1-210	TBD	TBD																
12	U-BOLT_HALF-IN	U-BOLT .5"	TBD																
11	LOCKNUT_1-21NX3-8	TBD	TBD																
10	FASTPIN_3-8X4	TBD	TBD																
9	BOLT_4X1-2	TBD	TBD																
8	ANCHOR_18LB_D-L	TBD	TBD																
7	332_BOWROLLER_STEMPLT	33 STEM PLATE	TBD																
6	332_BOWROLLER_SKIRT	33 BOWROLLER SKIRT	TBD																
5	332_BOWROLLER_CLEAT_PLT	BOW CHOCK	TBD																
4	332_BOWROLLER_BEARING	33 BOWROLLER BEARING	TBD																
3	332_BOWROLLER	33 BOWROLLER ASSEMBLY	TBD																
2	332_BOWROLLER	33 BOWROLLER	TBD																
1	33_CHEEK_PLATE	CHEEK PLATE 1/4" THK.																	
ITEM	COMPONENT NAME	DESCRIPTION	HUNTER PART NUMBER	LENGTH	WIDTH	THICKNESS	QUANTITY	STAGE	NET S/F OR B/F										

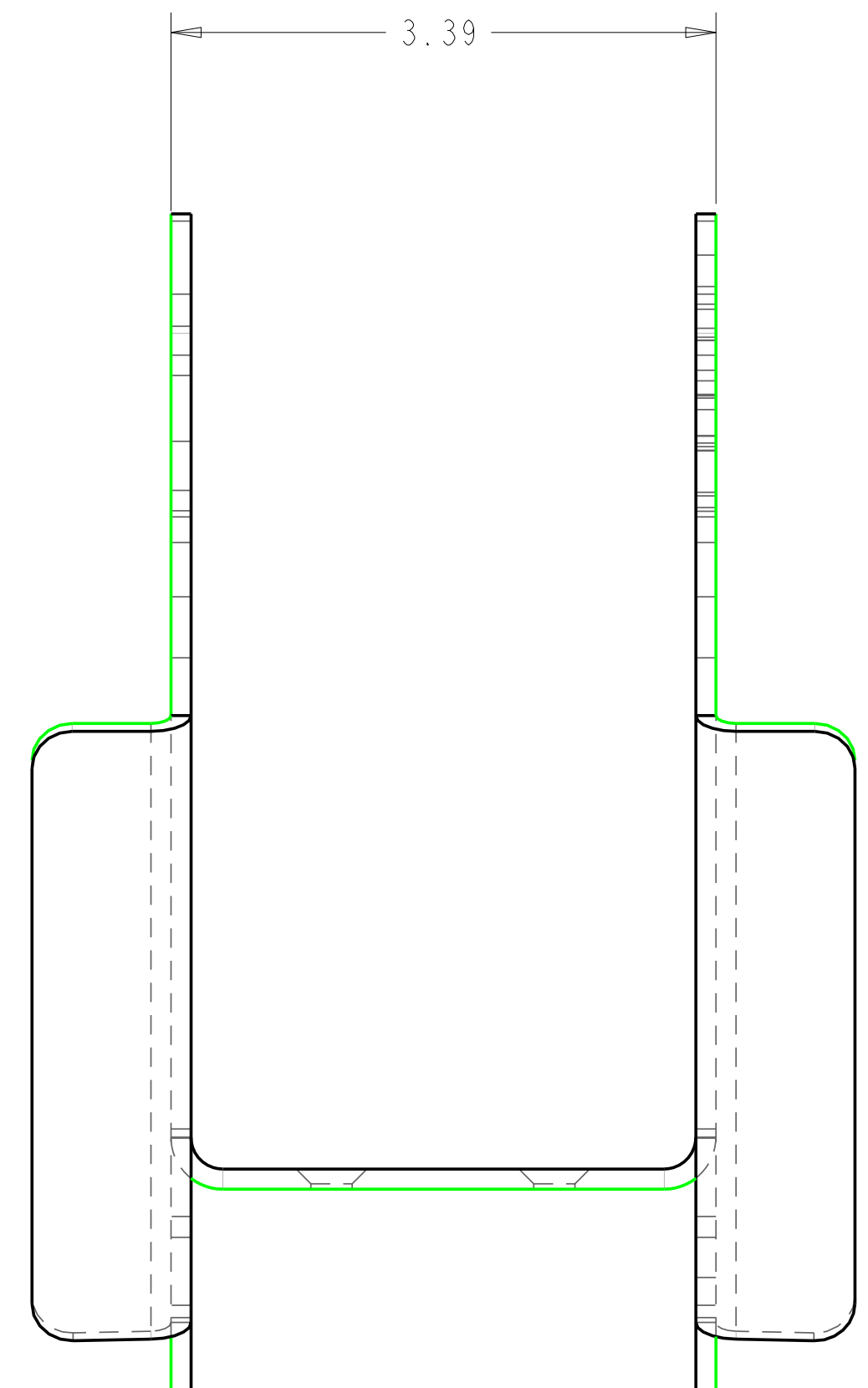
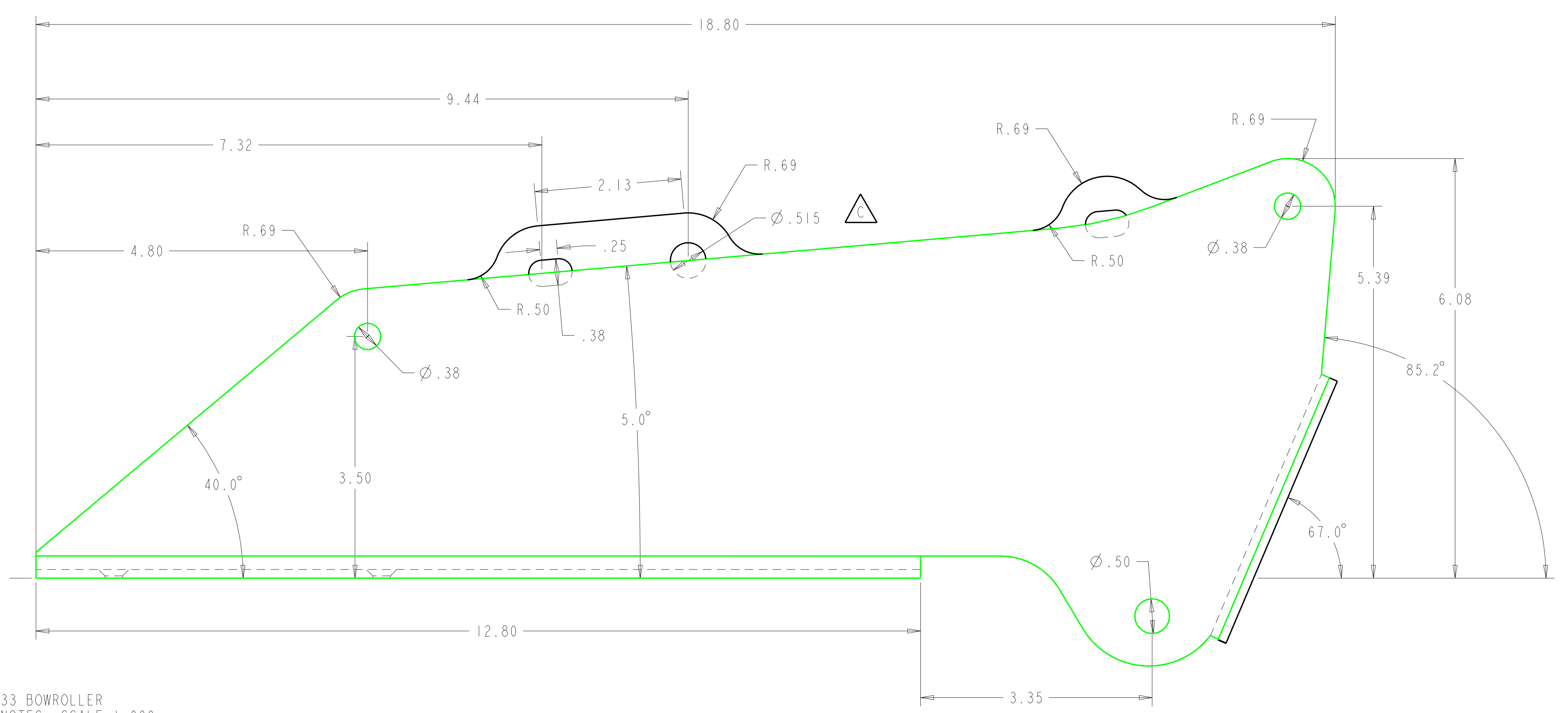
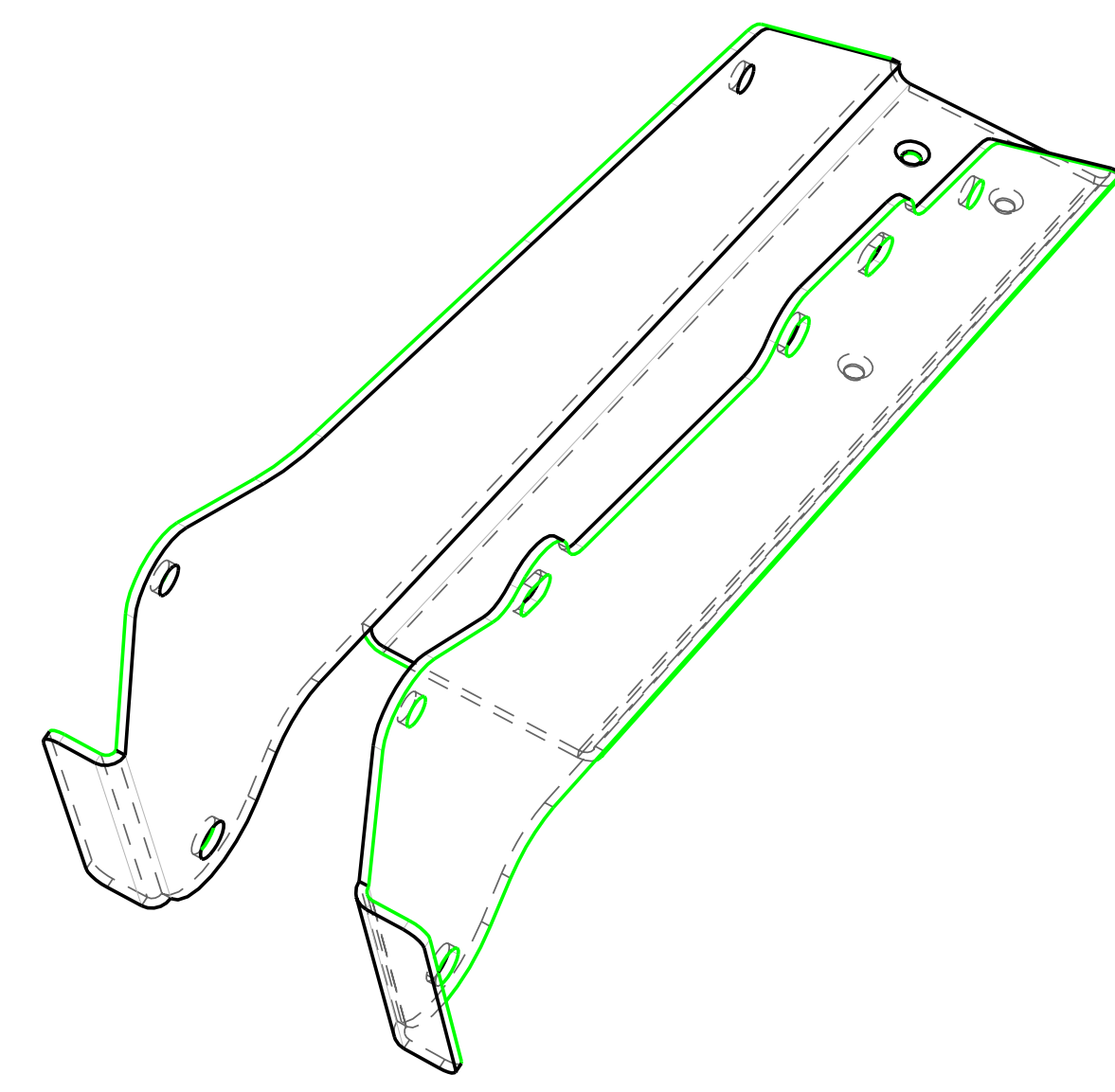
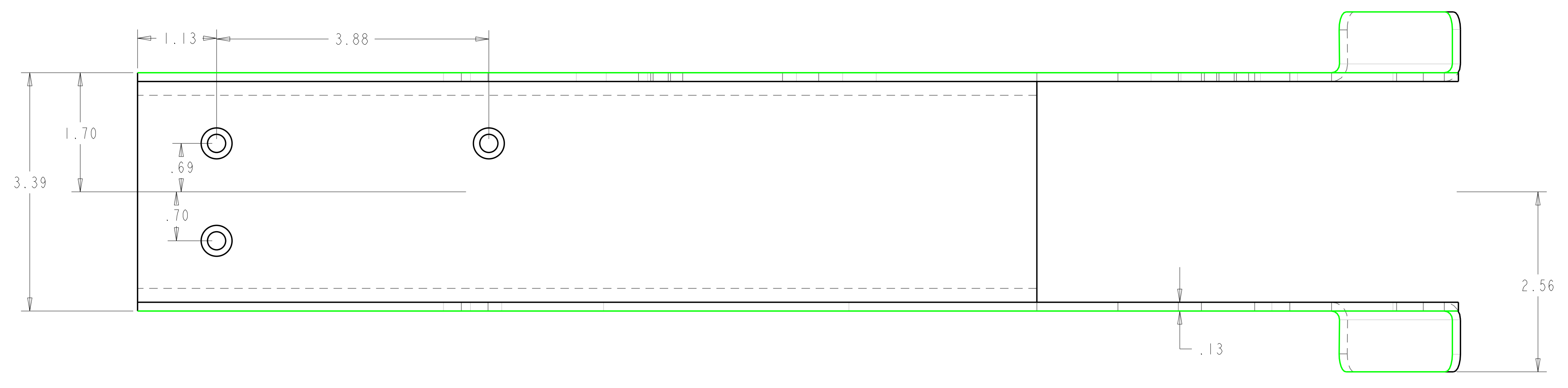
PROPRIETARY INFORMATION: THIS DRAWING CONTAINS INFORMATION FOR WHICH HUNTER MARINE CORPORATION HAS PROPRIETARY RIGHTS

# HUNTER 33

DRAWING TITLE: **33 BOWROLLER ASSEMBLY**

DRAWN BY: **JTM**      DATE: **10Oct03**      SHEET **1** OF **6**  
 SCALE: **0.500**      HUNTER PART NO.: **TBD**      REVISION:      DRAW # **332 BOWROLLER**

SYMBOL	REVISIONS	DATE	ENG
A	PRODUCTION PART HULL #3+	10/20/03	JTM
C	UPDATE 0.5 RIGGING HOLE TO 0.515	4/8/05	JLK



33 BOWROLLER  
 NOTES: SCALE=1.000  
 1. MATERIAL: 304 STAINLESS STEEL .125" THICKNESS  
 2. ALL DIMENSIONS ARE INCHES AND DEGREES  
 3. ALL WELDS TO MEET AWS STANDARDS.  
 4. BREAK AND DEBURR ALL EDGES  
 5. BRIGHT POLISH AFTER FABRICATION

NOTE: 3/32 RADIUS ALL EDGES OF ROLLER PLATES

PROPRIETARY INFORMATION: THIS DRAWING CONTAINS INFORMATION FOR WHICH HUNTER MARINE CORPORATION HAS PROPRIETARY RIGHTS

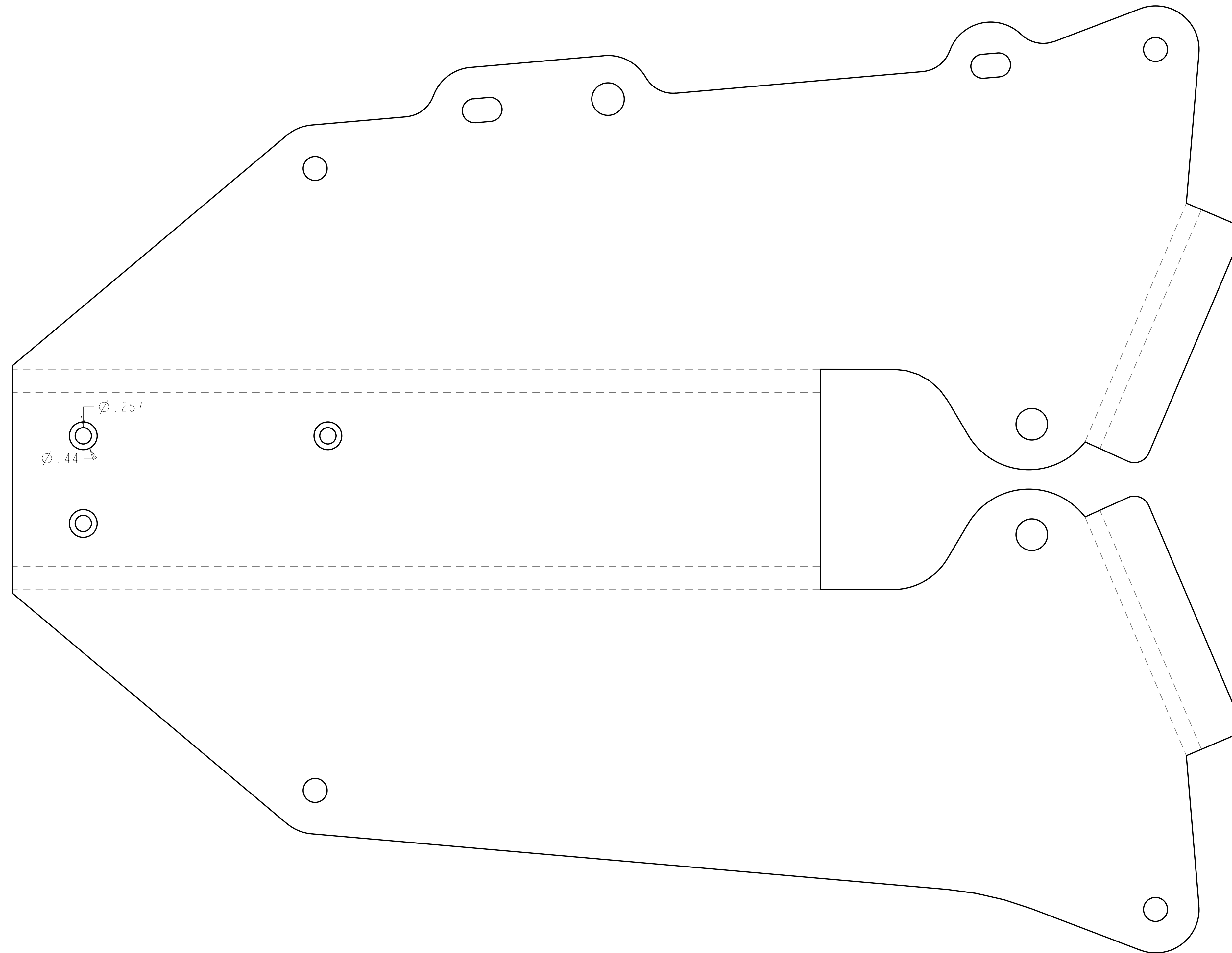
**HUNTER** 33

DRAWING TITLE: **33 BOWROLLER ASSEMBLY**

DRWN BY: JTM DATE: 10/20/03 SHEET 2 OF 6

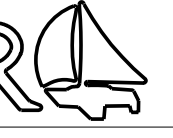
SCALE: 0.500 HUNTER PART NO. TBD REVISION: 332 BOWROLLER

SYMBOL	REVISIONS	DATE	ENG
A	PRODUCTION PART HULL #3+	10/20/03	JTM



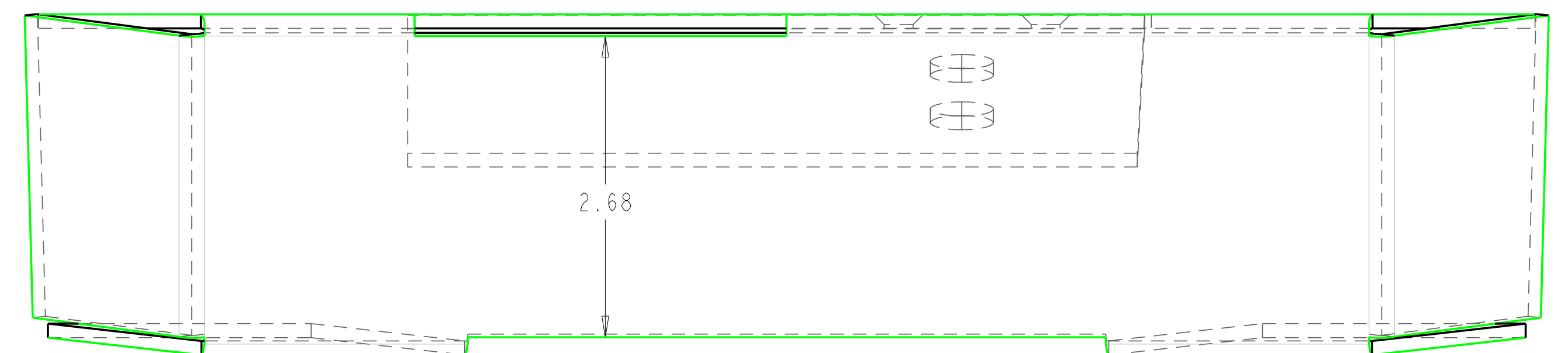
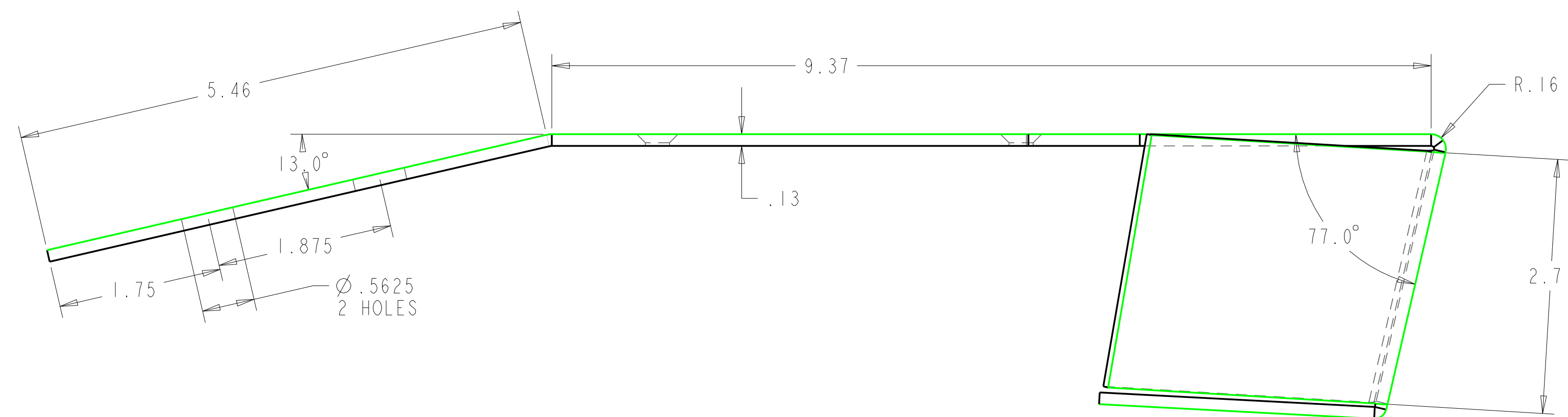
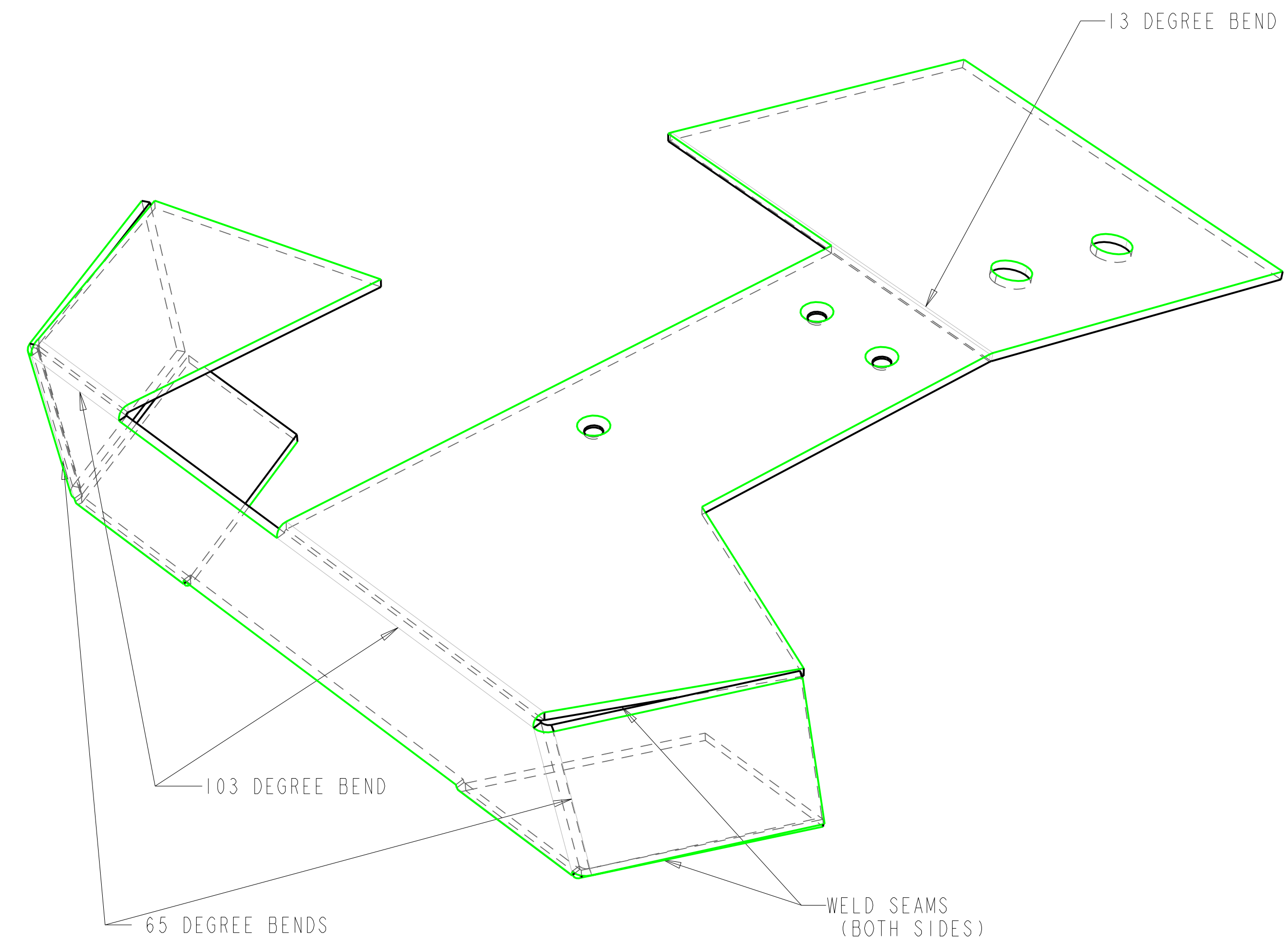
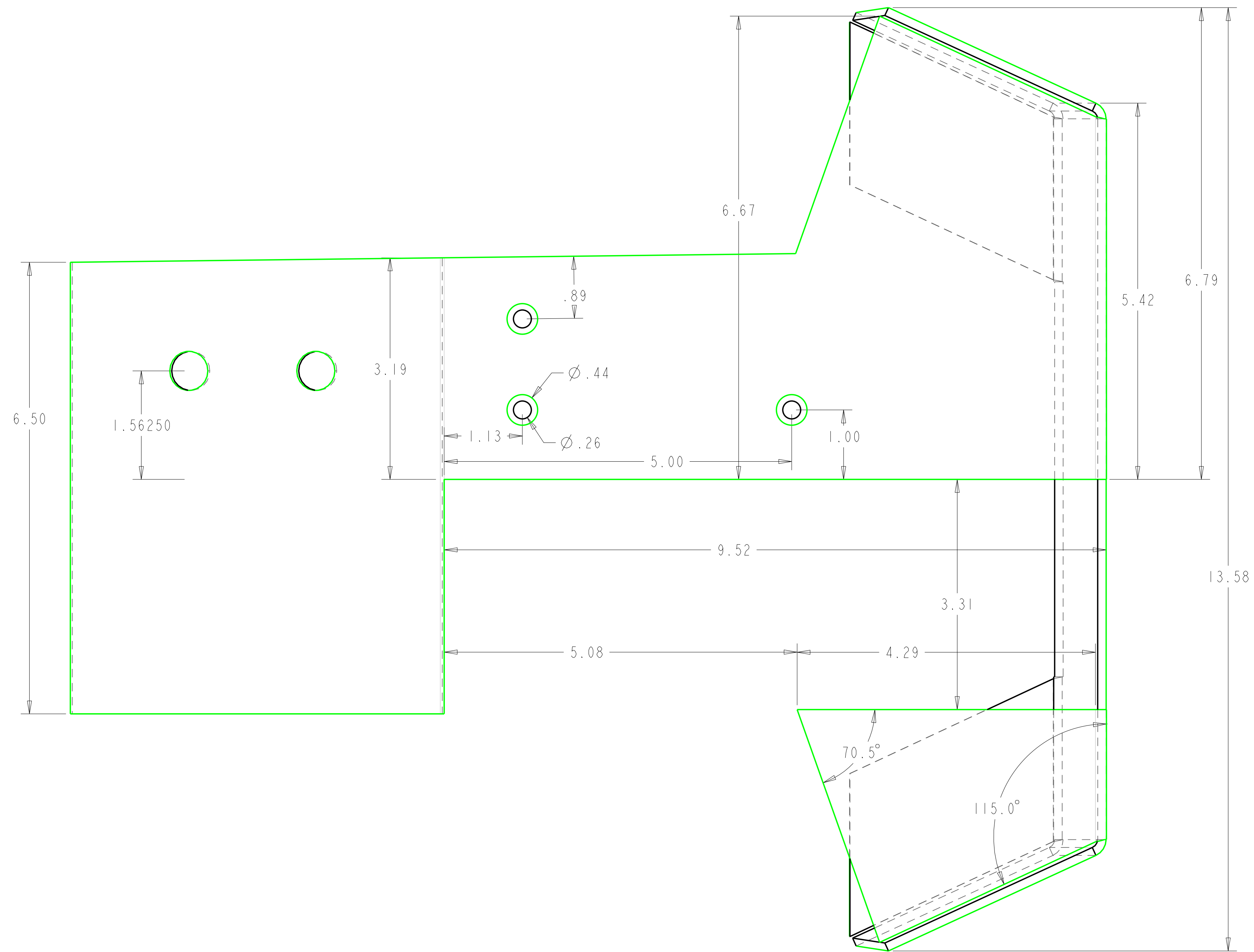
NOTE: 3/32 RADIUS ALL EDGES OF ROLLER PLATES

PROPRIETARY INFORMATION: THIS DRAWING CONTAINS INFORMATION FOR WHICH HUNTER MARINE CORPORATION HAS PROPRIETARY RIGHTS

**HUNTER**  **33**

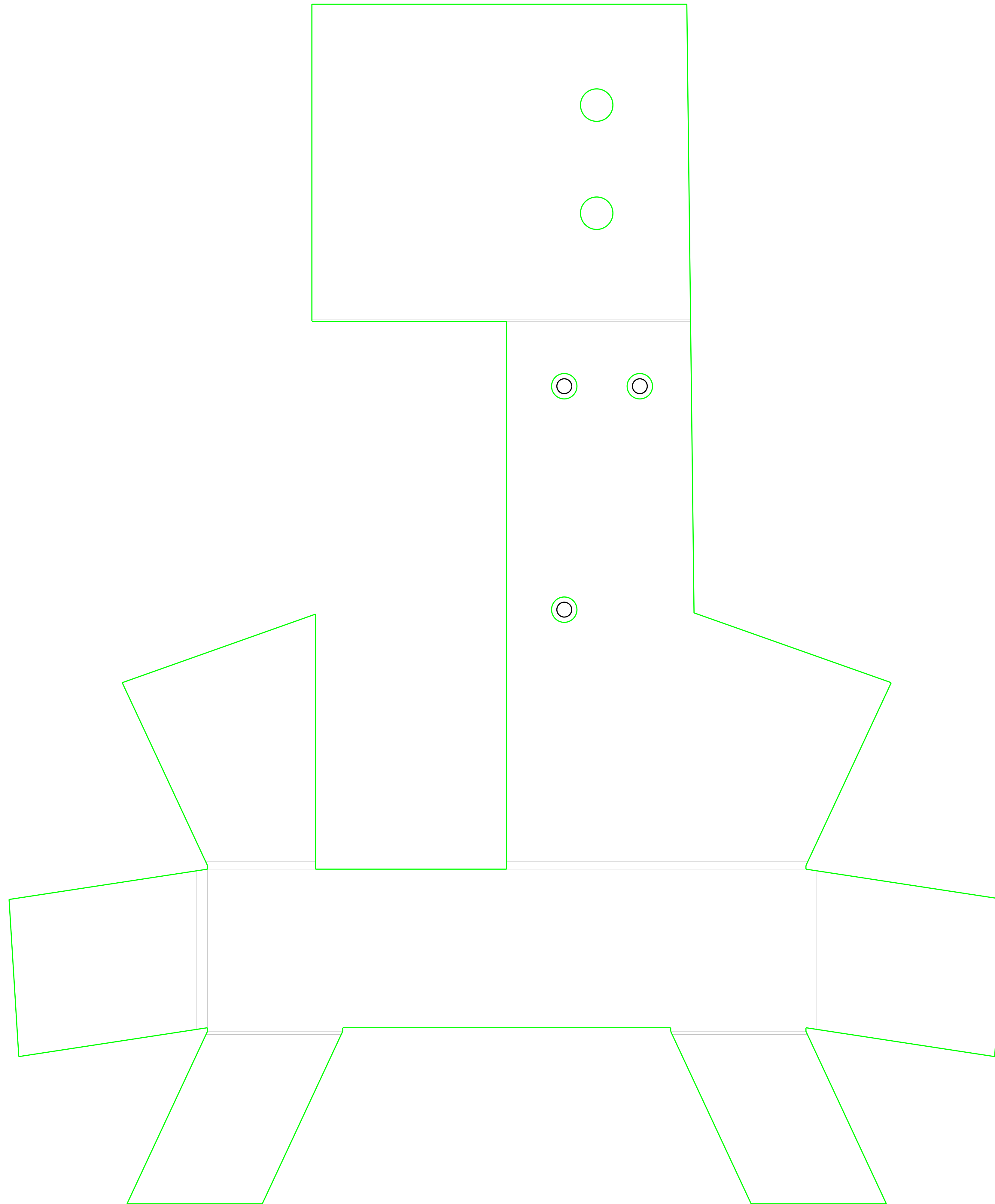
DRAWING TITLE: **33 BOWROLLER FLAT TEMPLATE**

DRAWN BY: <b>JTM</b>	DATE: <b>10Oct03</b>	SHEET: <b>3</b>	OF: <b>6</b>
SCALE: <b>1:1000</b>	HUNTER PART NO.: <b>TBD</b>	REVISION: <b>A</b>	DRAW #: <b>332 BOWROLLER</b>

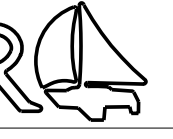


- 33 BOWROLLER SKIRT  
 NOTES: SCALE=1.000  
 1. MATERIAL: 304 Stainless Steel .125" THICKNESS  
 2. ALL DIMENSIONS ARE INCHES AND DEGREES  
 3. ALL WELDS TO MEET AWS STANDARDS.  
 4. BREAK AND DEBURR ALL EDGES  
 5. BRIGHT POLISH AFTER FABRICATION

SYMBOL	REVISIONS	DATE	ENG
A	PRODUCTION PART HULL #3+	10/20/03	JTM



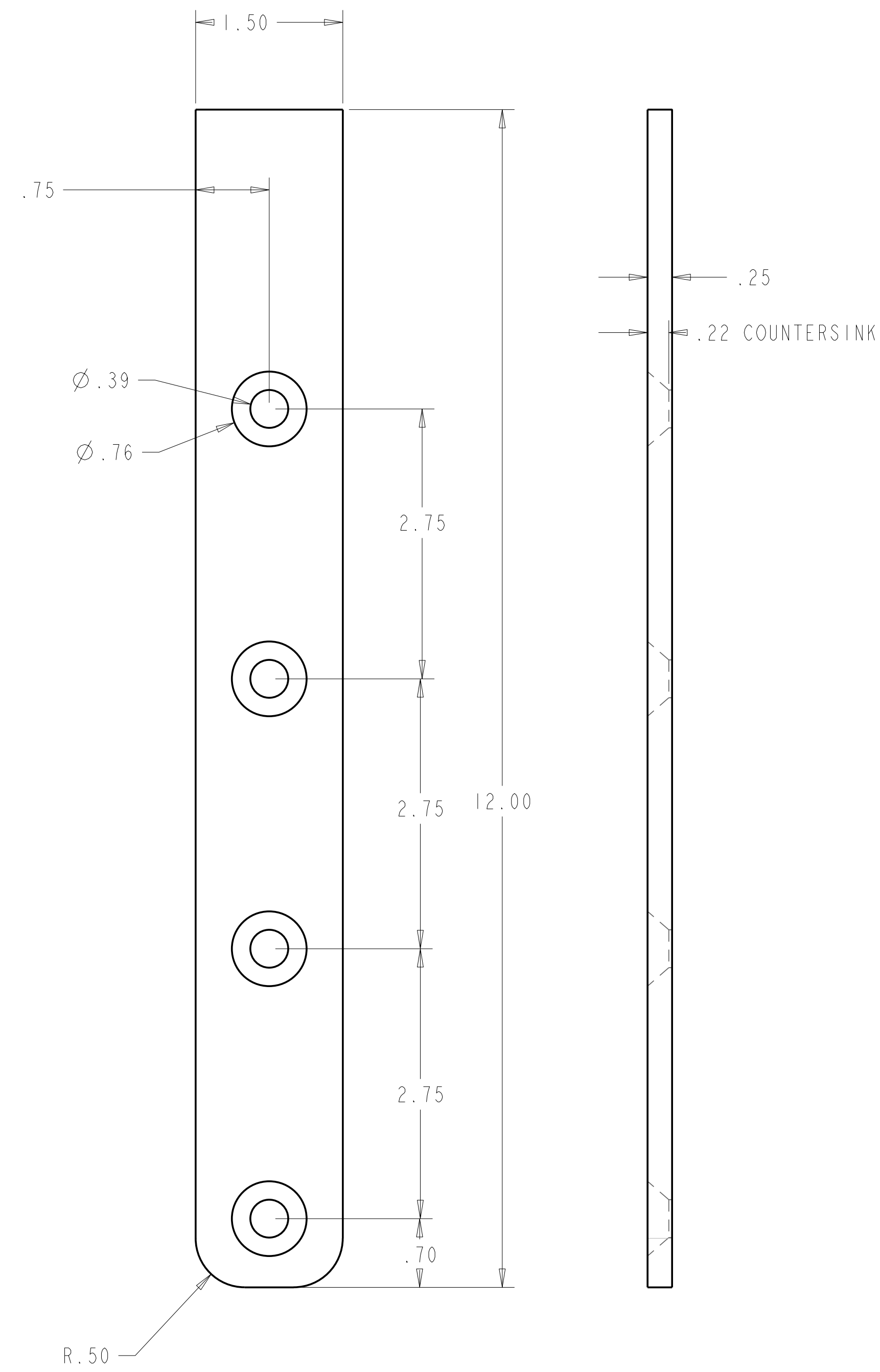
PROPRIETARY INFORMATION: THIS DRAWING CONTAINS INFORMATION FOR WHICH HUNTER MARINE CORPORATION HAS PROPRIETARY RIGHTS.

**HUNTER**  **33**

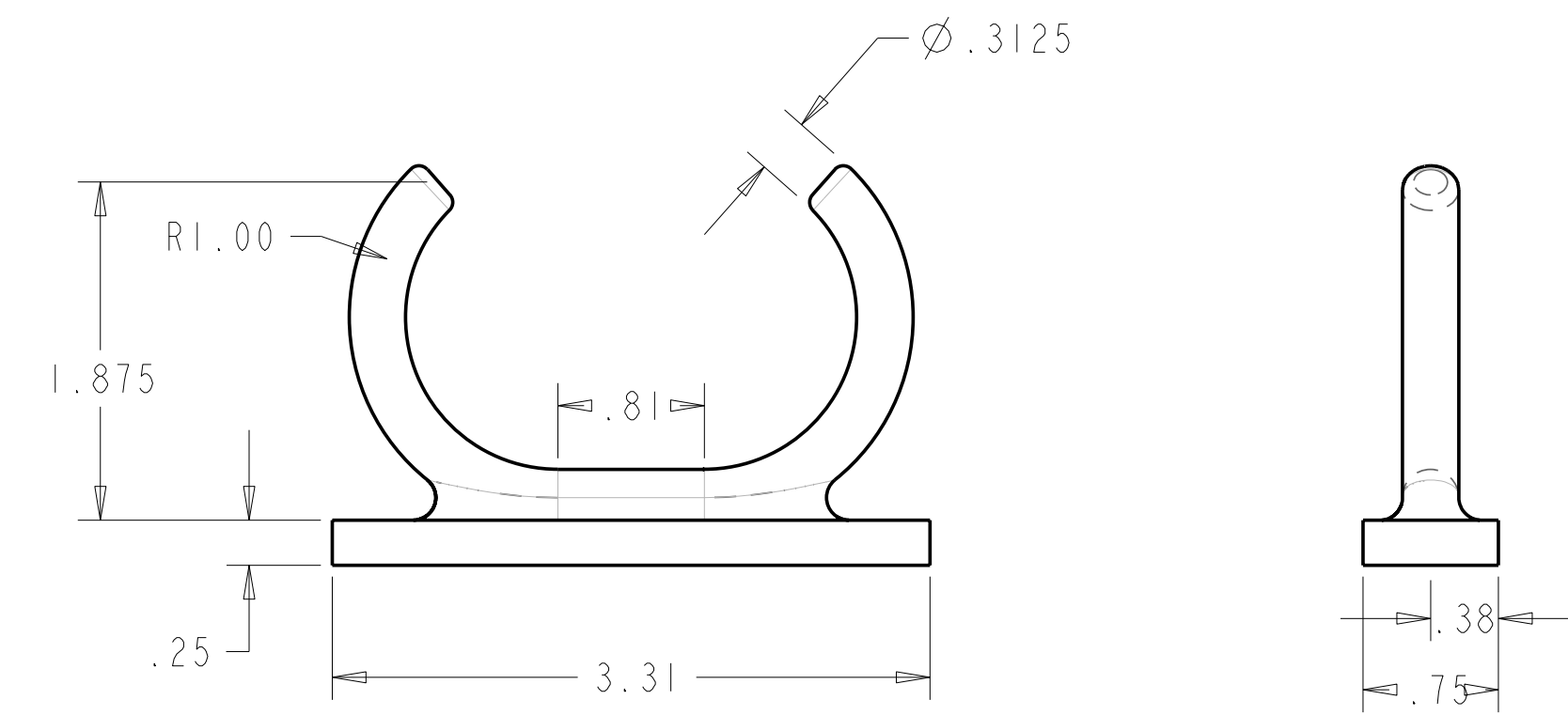
DRAWING TITLE:  
**33 BOWROLLER SKIRT TEMPLATE**

DRAWN BY: JTM	DATE: 10Oct03	SHEET: 5	OF: 6
SCALE: 1:000	HUNTER PART NO. TBD	REVISION: A	DRAW # 332 BOWROLLER

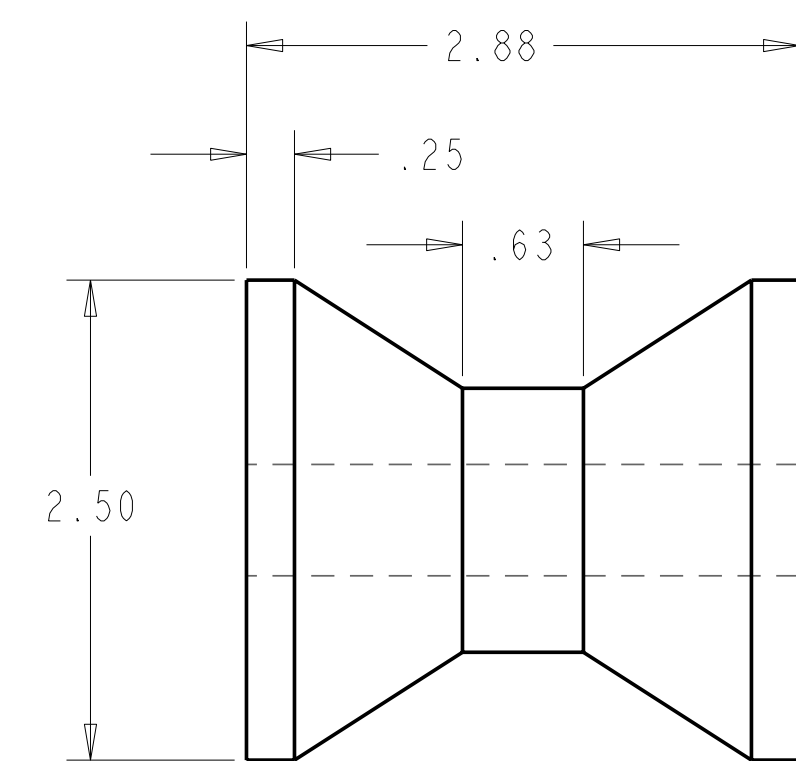
SYMBOL	REVISIONS	DATE	ENG
A	PRODUCTION PART HULL #3+	10/20/03	JTM



33 STEM PLATE  
 NOTES: SCALE=1.000  
 1. MATERIAL: 304 STAINLESS STEEL .25" THICKNESS  
 2. ALL DIMENSIONS ARE INCHES AND DEGREES  
 3. ALL WELDS TO MEET AWS STANDARDS.  
 4. BREAK AND DEBURR ALL EDGES  
 5. BRIGHT POLISH AFTER FABRICATION  
 6. ALIGN  $\phi$  WITH  $\phi$  OF SKIRTPLATE  
 7. WELD TO SKIRTPLATE



BOW CHOCK  
 NOTES: SCALE=1.000  
 1. MATERIAL: STAINLESS STEEL  $\phi$ .3125" ROD  
 PLATE .25" THICKNESS  
 2. ALL DIMENSIONS ARE INCHES AND DEGREES  
 3. ALL WELDS TO MEET AWS STANDARDS.  
 4. BREAK AND DEBURR ALL EDGES  
 5. BRIGHT POLISH AFTER FABRICATION  
 6. ALIGN EDGE WITH  $\phi$  OF SKIRTPLATE  
 7. WELD TO SKIRTPLATE AS SHOWN ON PAGE 1



33 BOWROLLER BEARING  
 NOTES: SCALE=1.000  
 1. MATERIAL: UHMW  
 2. ALL DIMENSIONS ARE INCHES AND DEGREES  
 3. BREAK AND DEBURR ALL EDGES

