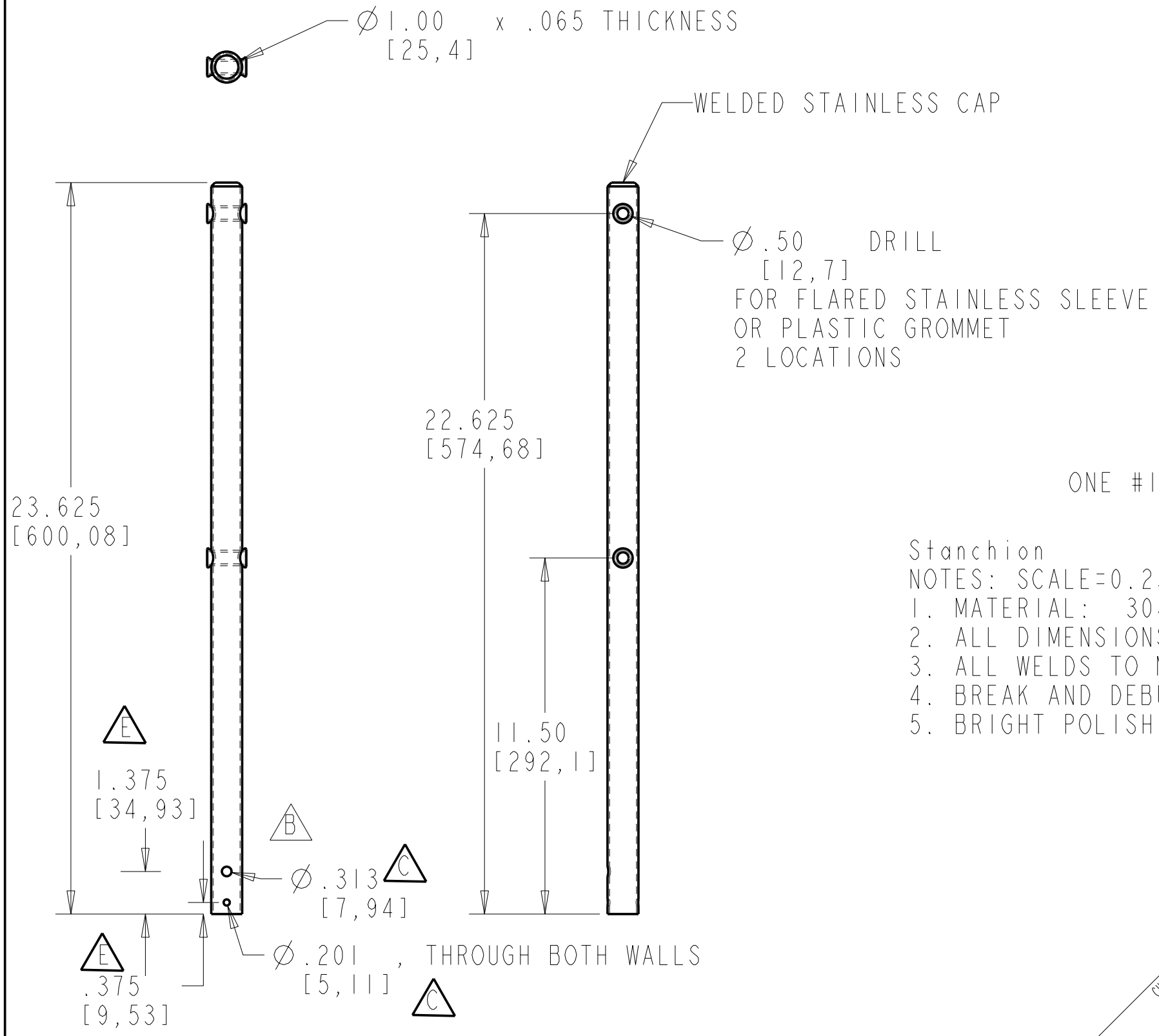
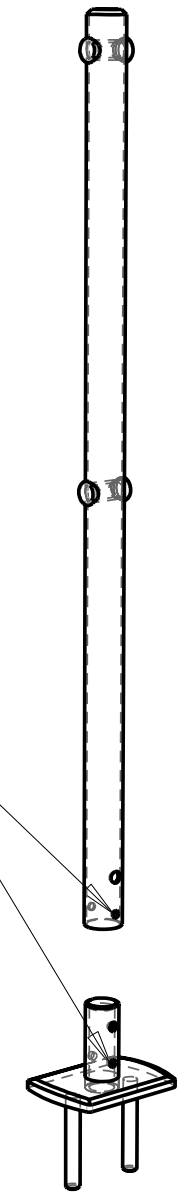


SYMBOL	REVISIONS	DATE	ENG
A	ORIGINAL ISSUE		
B	ADD HOLE TO MATCH BASE	3/10/04	AFF
C	UPDATE DRILL HOLE SIZE	5/3/04	JLK
D	Update Dims of bottom two holes.	11/29/04	JLK
E	UPDATE BOTTOM HOLES	1/27/05	JLK



FASTEN BASE TO POLE WITH
 ONE #10 THROUGH BOLT 2" LENGTH
 TWO WASHERS
 ONE LOCK NUT

- Stanchion
 NOTES: SCALE=0.250
1. MATERIAL: 304 STAINLESS STEEL
 2. ALL DIMENSIONS ARE INCHES AND DEGREES
 3. ALL WELDS TO MEET AWS STANDARDS.
 4. BREAK AND DEBURR ALL EDGES
 5. BRIGHT POLISH AFTER FABRICATION



PROPRIETARY INFORMATION: THIS DRAWING CONTAINS INFORMATION FOR WHICH HUNTER MARINE CORPORATION HAS PROPRIETARY RIGHTS.



DRAWING TITLE: Stanchion			
DRAWN BY: JTM	DATE: 06-Jun-03	SHEET 1	OF 1
SCALE: 0.250	HUNTER PART NO. TBD	REVISION	DRAW # STANCHION.COMMON.2LINE

CHECKED: