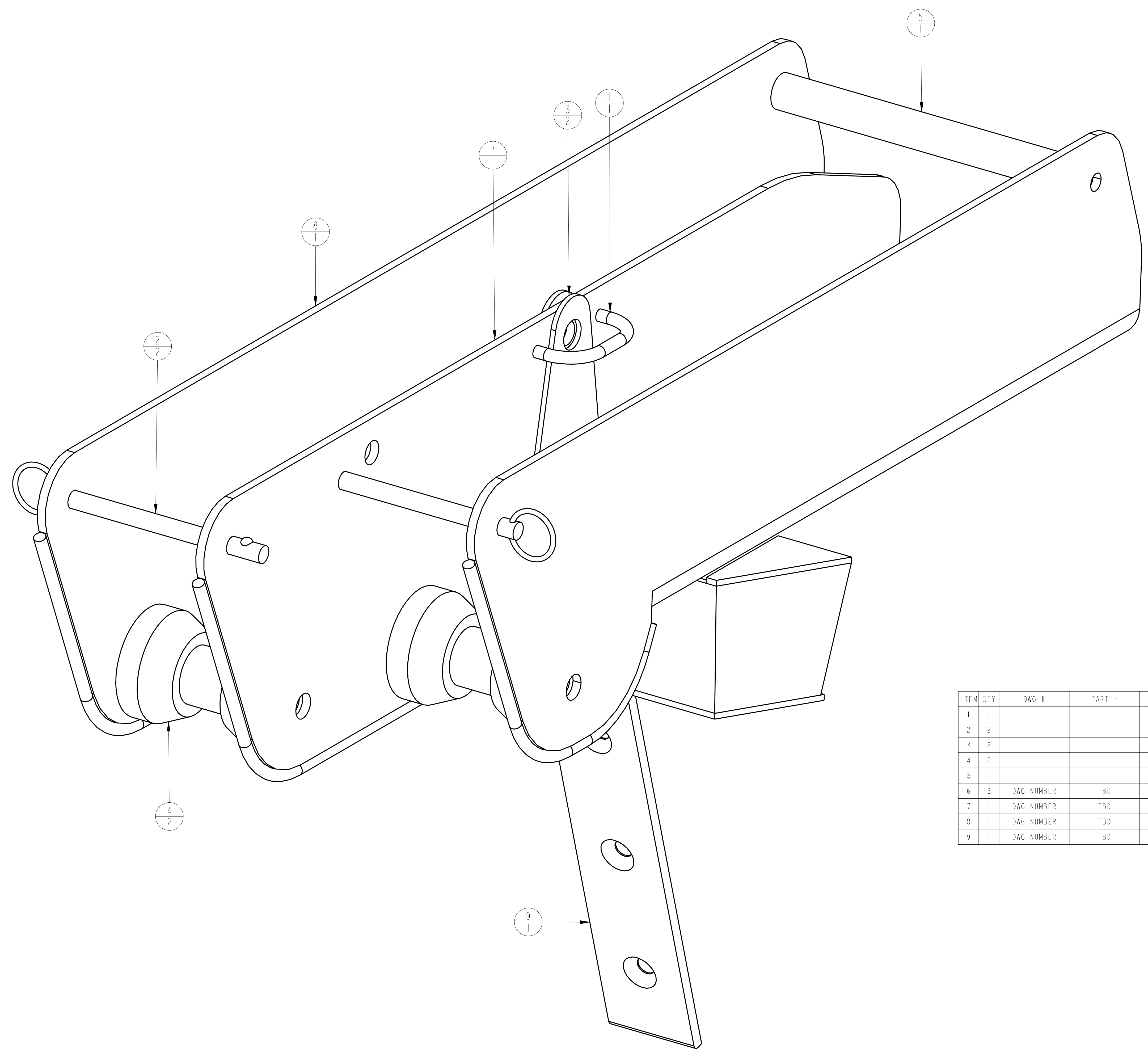


SYMBOL	REVISIONS	DATE	ENG
A	CHANGE STEM PLATE DESIGN: ADD BOTTOM PLATE, NOTCH TOP PLATE TO MAKE PLATE FLUSH W/BASE	7-11-01	ESA
B	MOVE HOLES FOR LARGE ROLLERS DOWN FROM 5.035" TO 5.41"	7-25-01	ESA
C	ADD $\varnothing 1/2"$ HOLE FOR SPINNAKER TACK LINE IN MIDDLE PLATE	10-30-01	ESA
D	CHANGE QUICK PIN HOLE \varnothing FROM $\varnothing.41$ TO $\varnothing.375$	11-26-01	ESA
E	REDUCE ANCHOR ROLLER MID PLATE 2 1/2"	8/28/03	ESA



ITEM	QTY	DWG #	PART #	MANUFACTURER	DESCRIPTION	COMMENTS
1	1			SOUTH COAST	1/4" ROD	-
2	2			SOUTH COAST	3/8" QUICK RELEASE PIN	
3	2			SOUTH COAST	CHEEK PLATE 1/8" THK.	
4	2			SOUTH COAST	ROLLER, 3" DIA. UHMW	
5	1			SOUTH COAST	ROLLER, 3/4" DIA. UHMW	
6	3	DWG NUMBER	TBD	HUNTER	1/4" CHAFE ROD	
7	1	DWG NUMBER	TBD	SOUTH COAST	BOW ROLLER MIDDLE PLATE	
8	1	DWG NUMBER	TBD	SOUTH COAST	BOW ROLLER SIDE PLATE	
9	1	DWG NUMBER	TBD	SOUTH COAST	BOW ROLLER STEM PLATE	

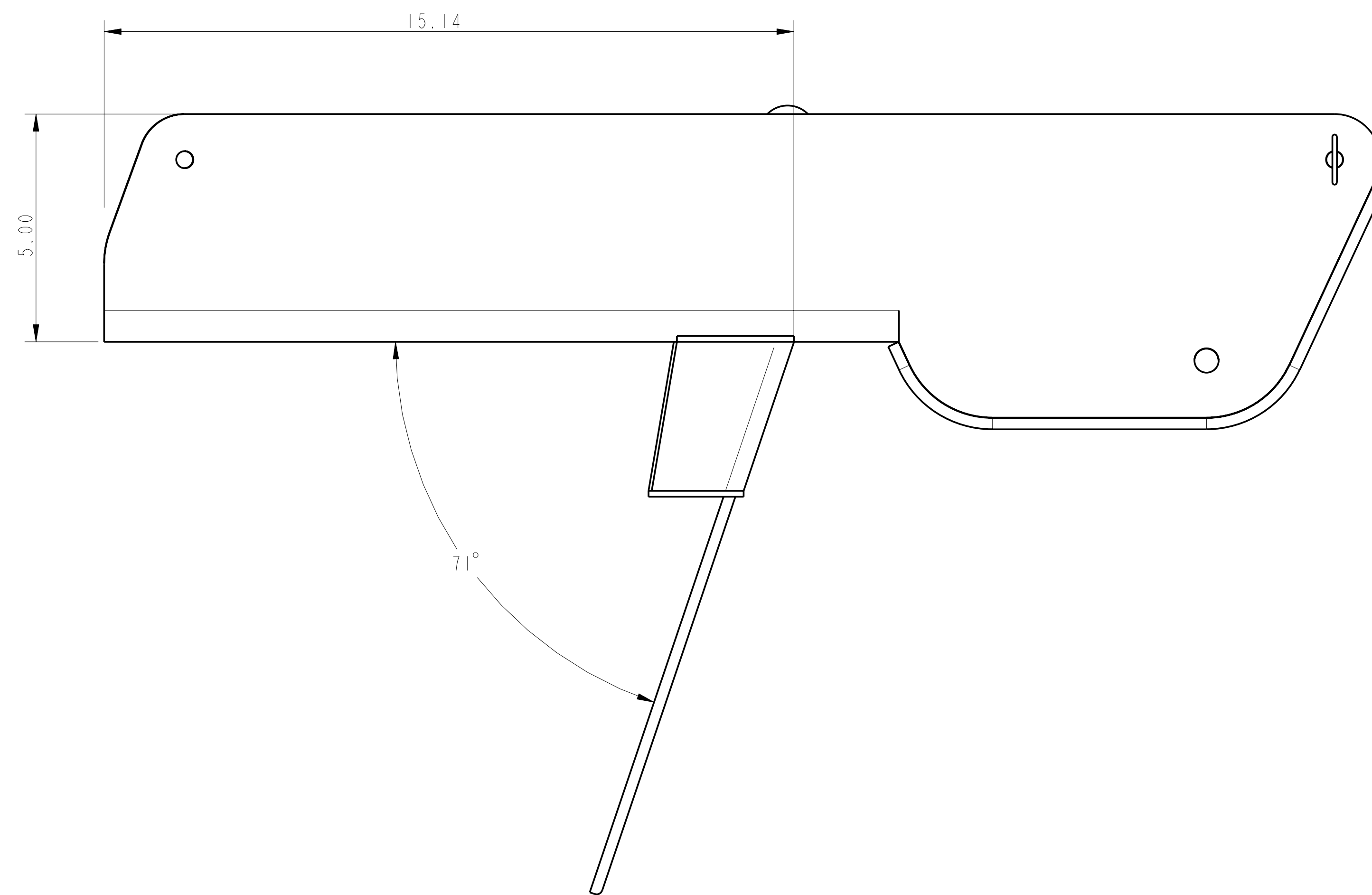
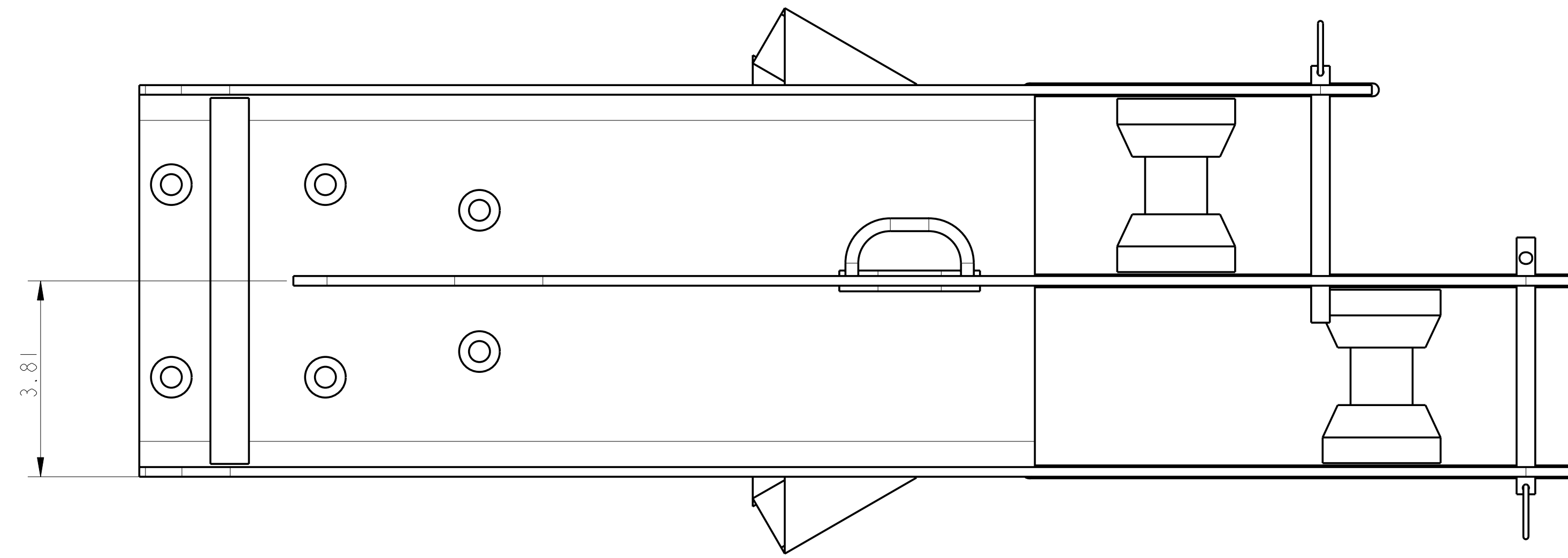
PROPRIETARY INFORMATION: THIS DRAWING CONTAINS INFORMATION FOR WHICH HUNTER MARINE CORPORATION HAS PROPRIETARY RIGHTS.

HUNTER 356

DRAWING TITLE: **BOW ROLLER ASSEMBLY**

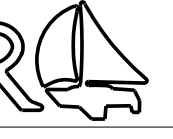
DRAWN BY: **ESA** DATE: **09-May-01** SHEET: **1** OF **5**

SCALE: **1:000** HUNTER PART NO.: **TBD** REVISION: **E** DRAW # **35024001**



SCALE 0.500

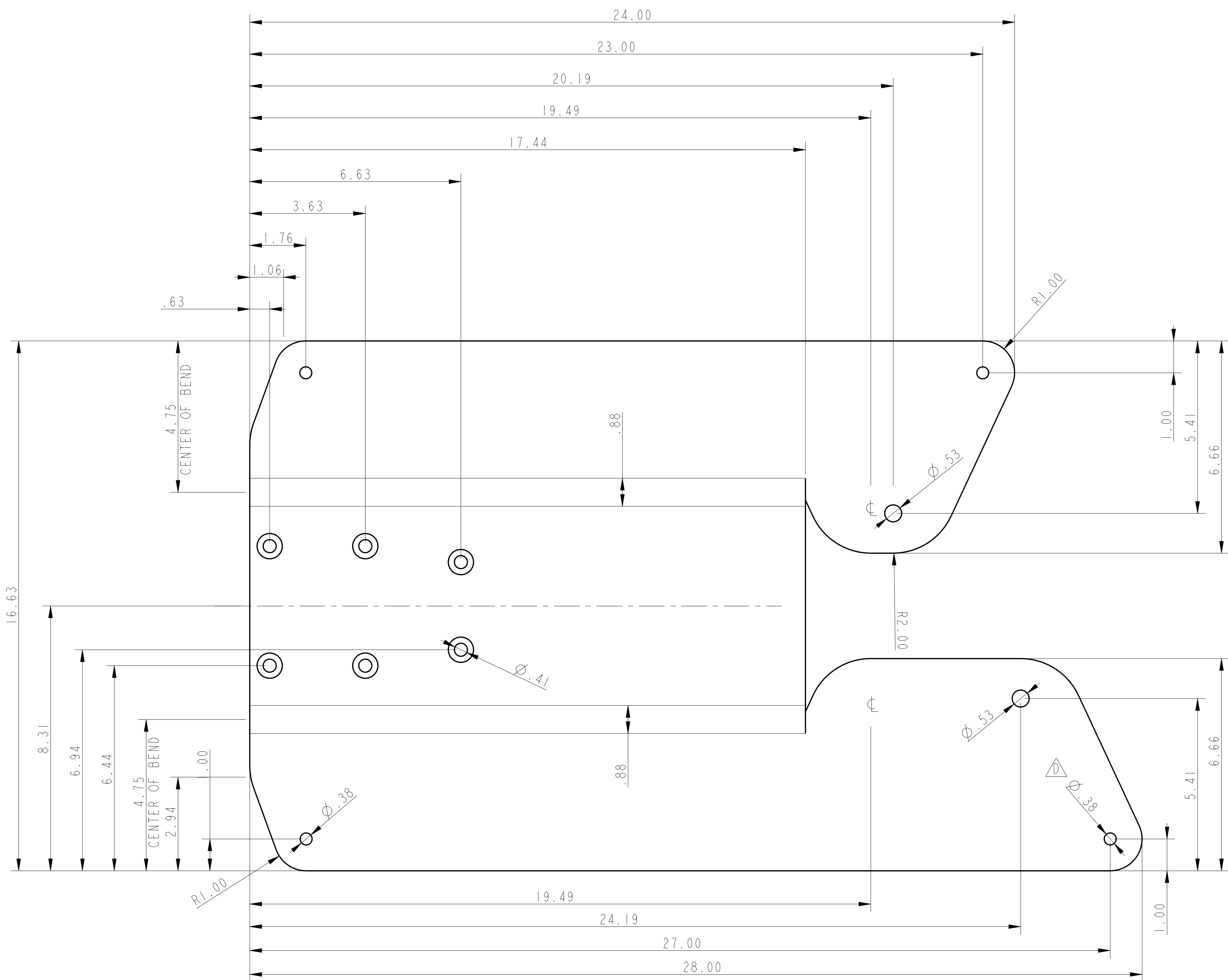
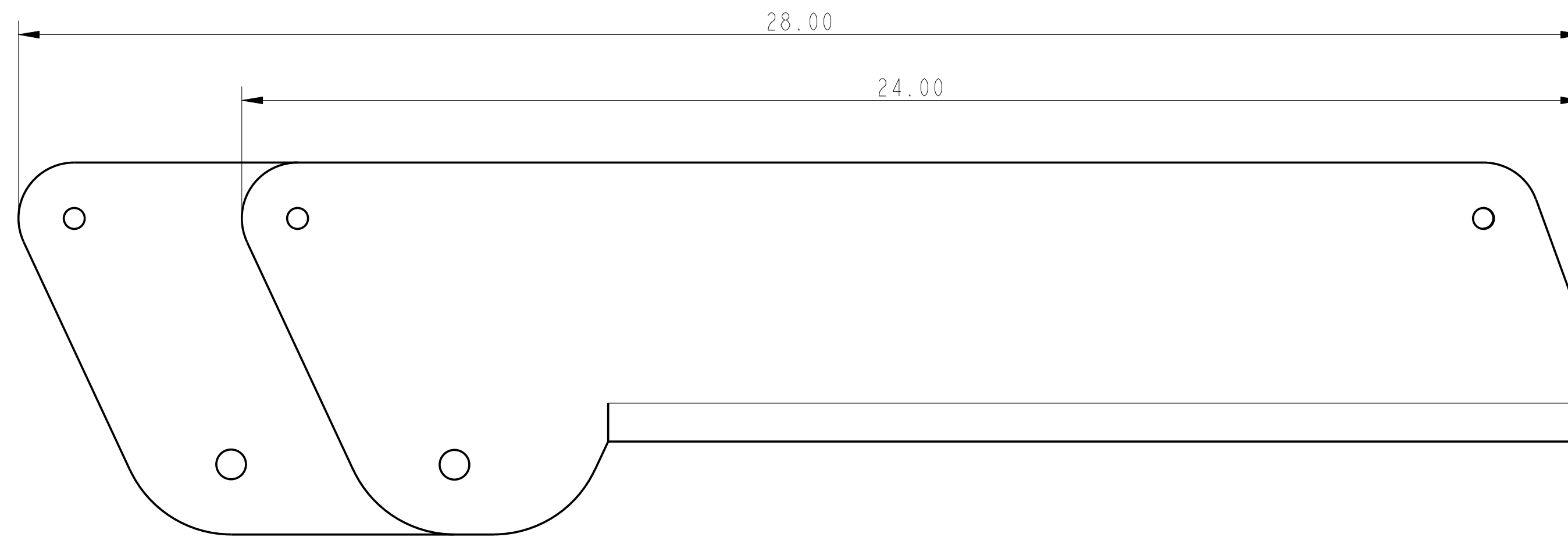
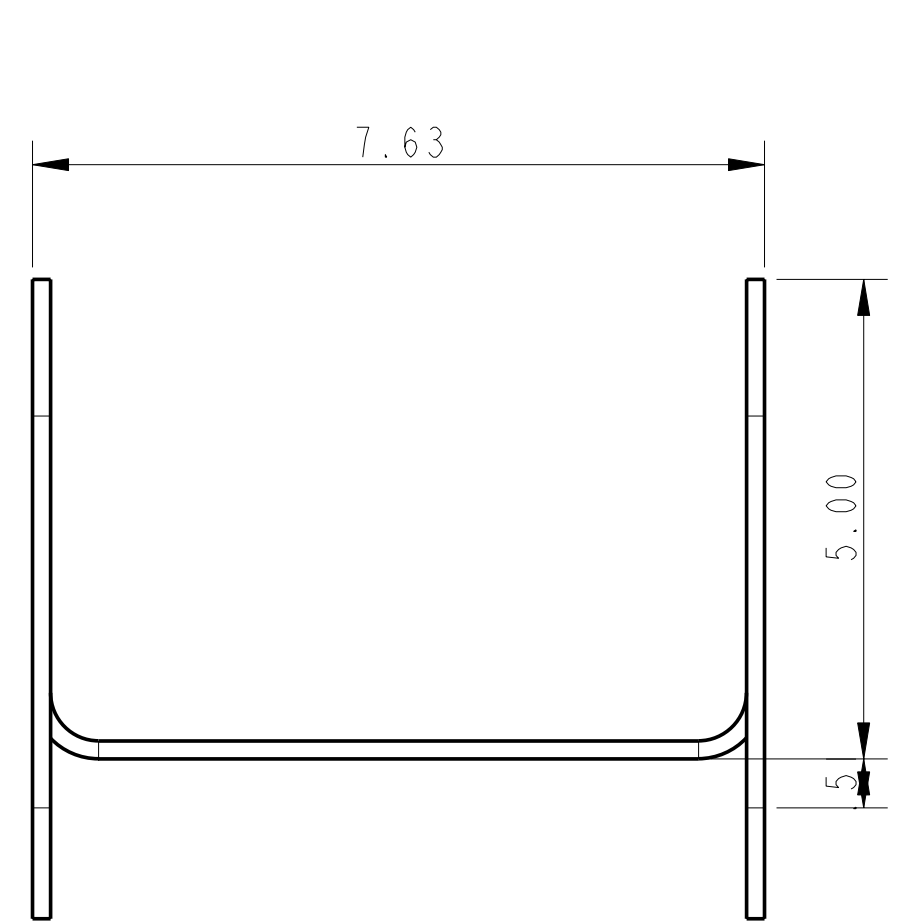
PROPRIETARY INFORMATION: THIS DRAWING CONTAINS INFORMATION FOR WHICH HUNTER MARINE CORPORATION HAS PROPRIETARY RIGHTS.

HUNTER  **356**

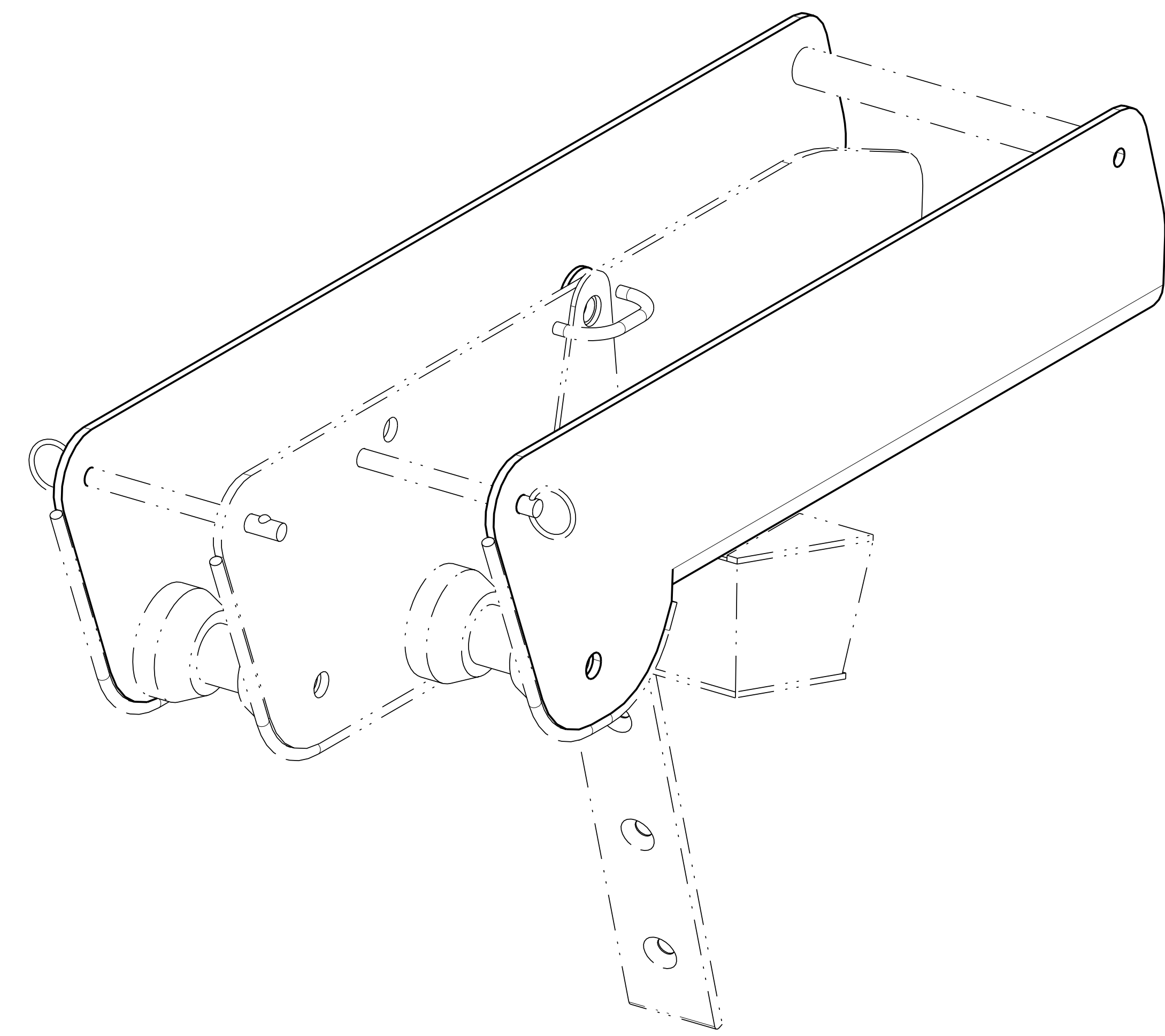
DRAWING TITLE: **BOW ROLLER ASSEMBLY**

DRAWN BY: ESA	DATE: 14-May-01	SHEET: 2	OF: 5
SCALE: 1:000	HUNTER PART NO.: TBD	REVISED: E	DRW # 35024001

CHANGED:



SCALE 0.500



SCALE 0.500

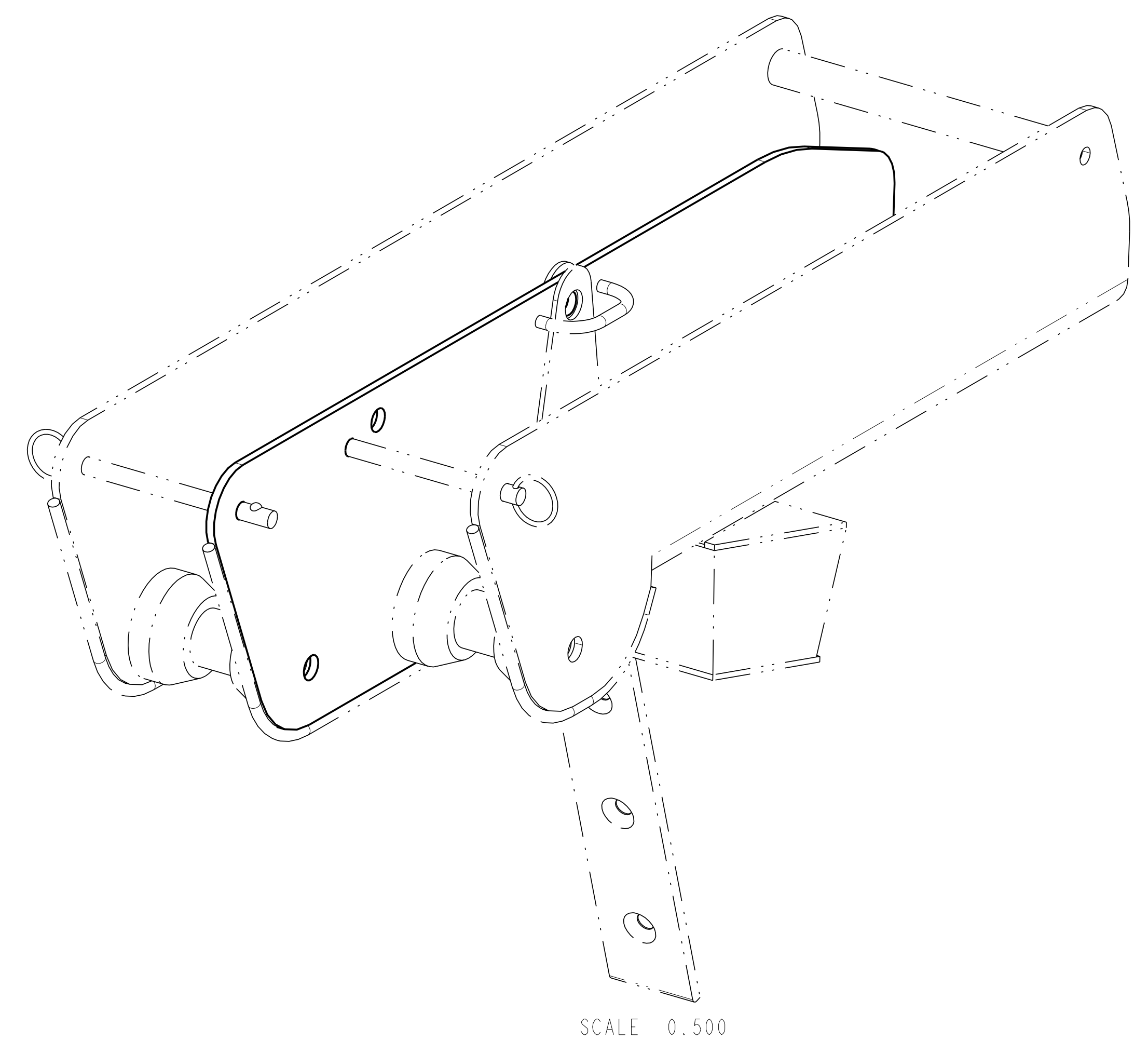
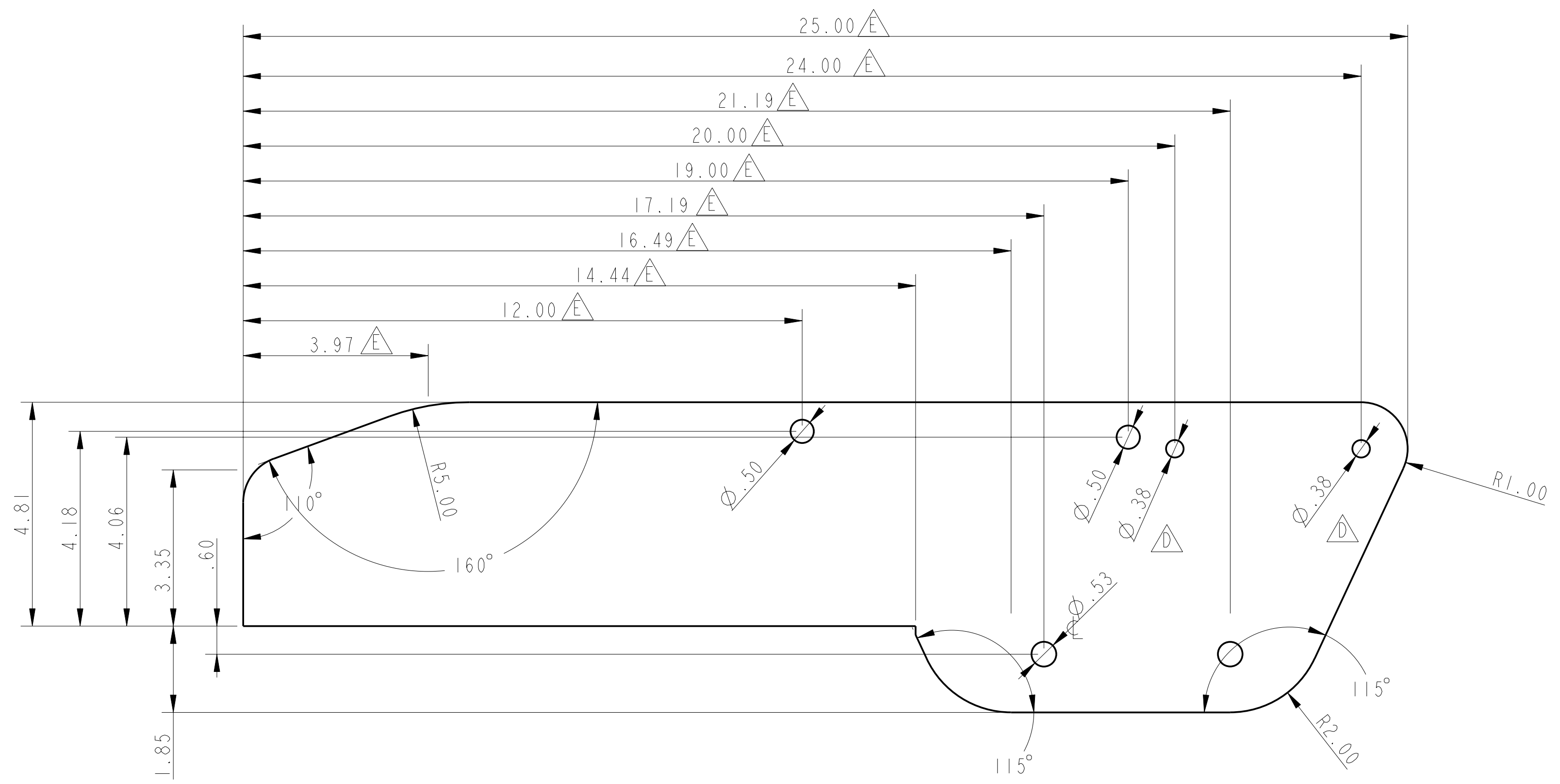
BOW ROLLER SIDE PLATE
 NOTES: SCALE=0.500
 1. MATERIAL: 304 STAINLESS STEEL
 2. ALL DIMENSIONS ARE INCHES AND DEGREES
 3. ALL WELDS TO MEET AWS STANDARDS.
 4. BREAK AND DEBURR ALL EDGES
 5. BRIGHT POLISH AFTER FABRICATION

PROPRIETARY INFORMATION: THIS DRAWING CONTAINS INFORMATION FOR WHICH HUNTER MARINE CORPORATION HAS PROPRIETARY RIGHTS

HUNTER 356

DRAWING TITLE: **BOW ROLLER ASSEMBLY**

DRAWN BY: ESA	DATE: 09-May-01	SHEET: 3	OF: 5
SCALE: 1:000	HUNTER PART NO.: TBD	REVISION: E	DRAW # 35024001



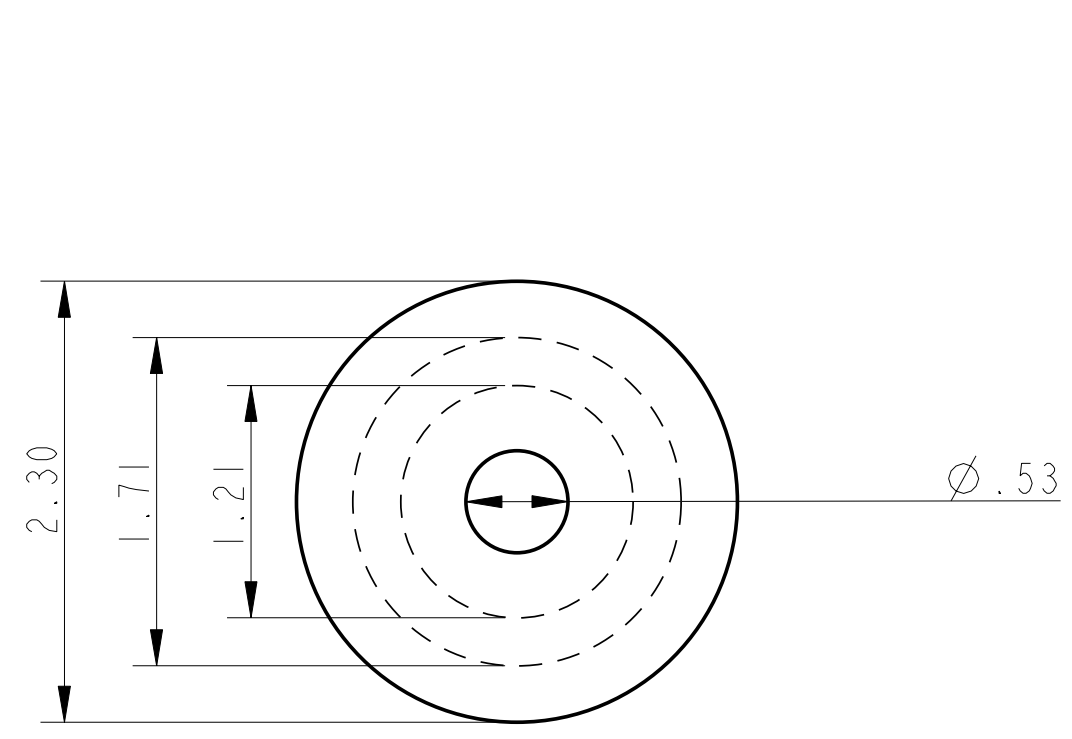
BOW ROLLER MIDDLE PLATE
 NOTES: SCALE=0.500
 1. MATERIAL: 304 STAINLESS STEEL
 2. ALL DIMENSIONS ARE INCHES AND DEGREES
 3. ALL WELDS TO MEET AWS STANDARDS.
 4. BREAK AND DEBURR ALL EDGES
 5. BRIGHT POLISH AFTER FABRICATION

PROPRIETARY INFORMATION: THIS DRAWING CONTAINS INFORMATION FOR WHICH HUNTER MARINE CORPORATION HAS PROPRIETARY RIGHTS

HUNTER 356

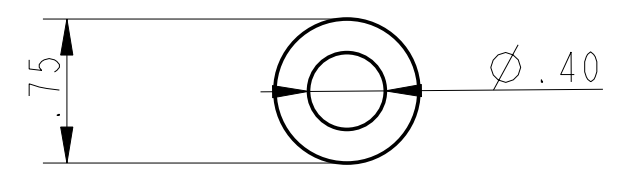
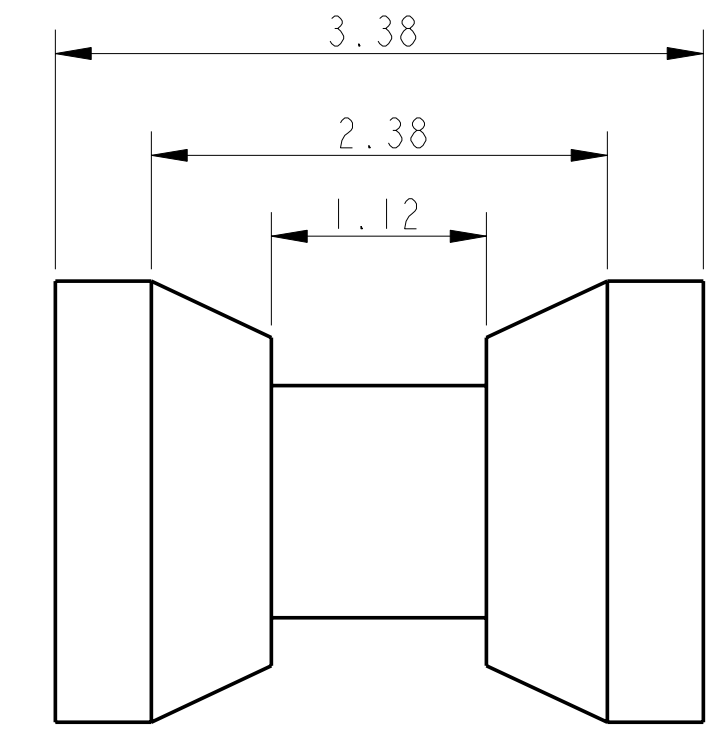
DRAWING TITLE: **BOW ROLLER ASSEMBLY**

DRAWN BY: ESA	DATE: 09-May-01	SHEET: 4	OF: 5
SCALE: 1:000	HUNTER PART NO.: TBD	REVISION: E	DRAM # 35024001



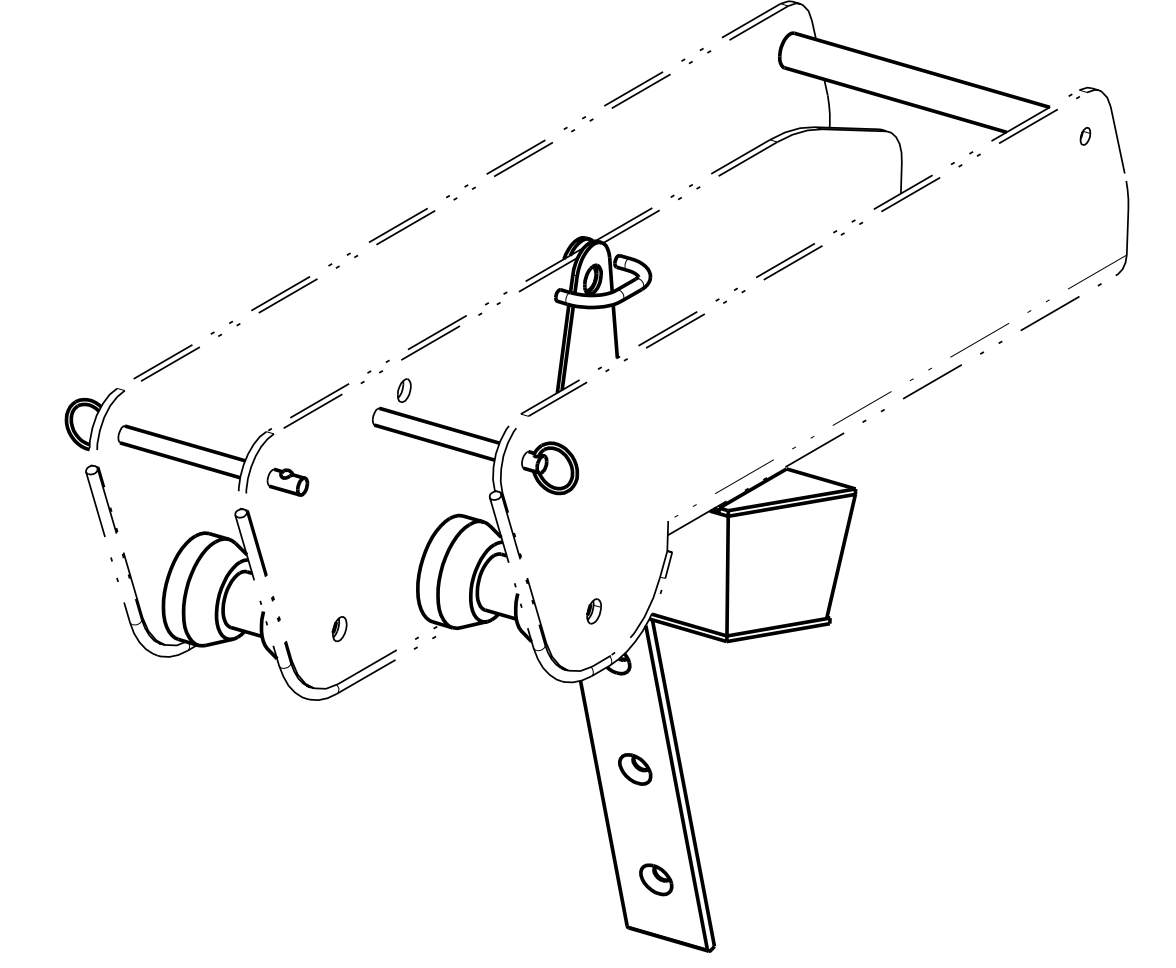
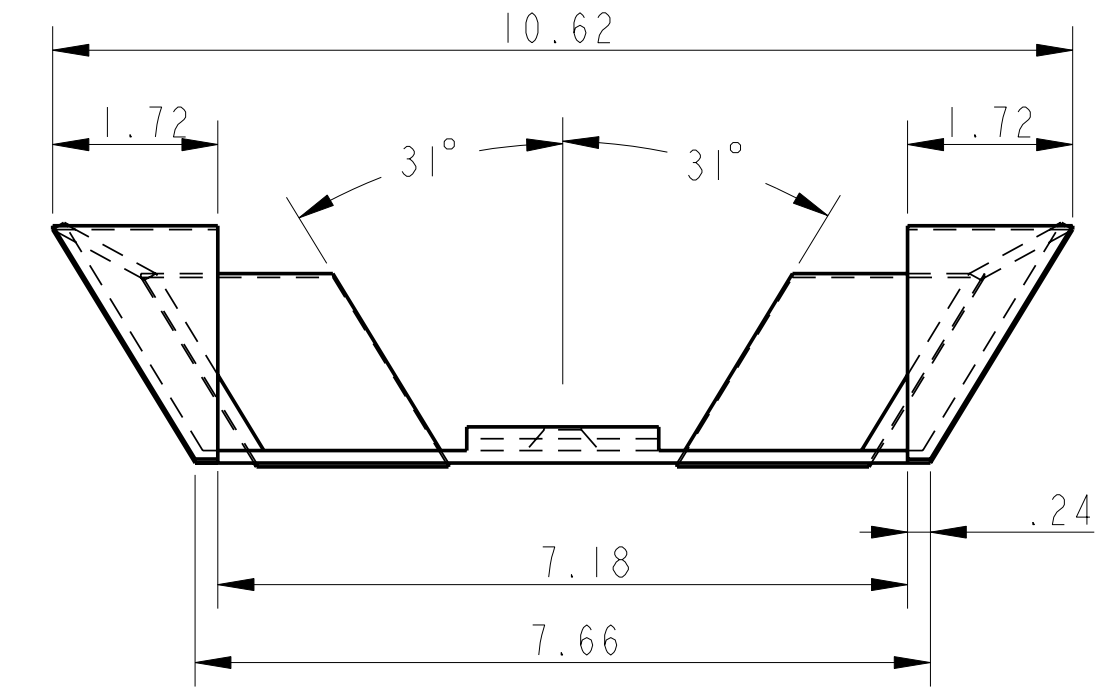
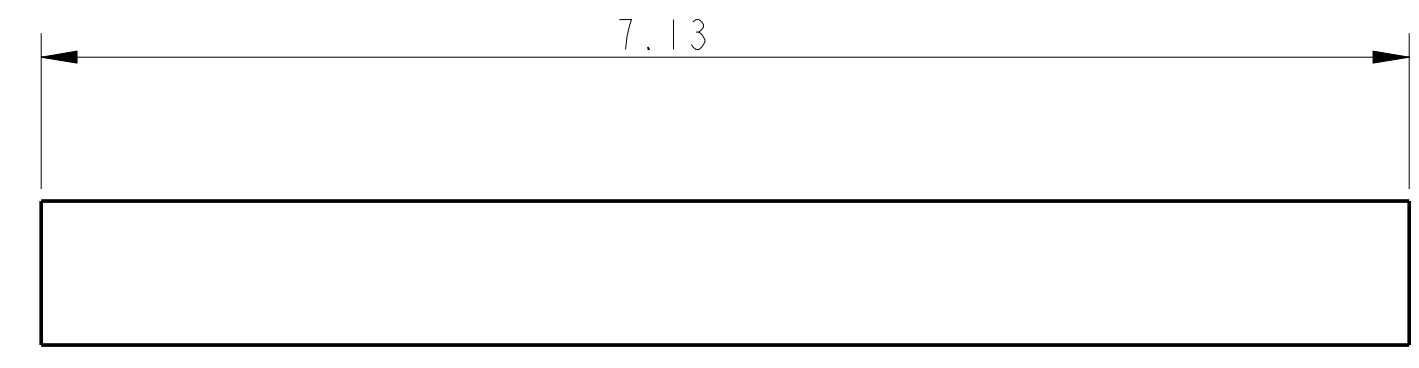
Ø3" ROLLER

ROLLER, 3" DIA. UHMW
 NOTES: SCALE=1.000
 1. MATERIAL: UHMW
 QTY: 2 PER BOAT
 2. ALL DIMENSIONS ARE INCHES AND DEGREES
 3. ALL WELDS TO MEET AWS STANDARDS.
 4. BREAK AND DEBURR ALL EDGES
 5. BRIGHT POLISH AFTER FABRICATION

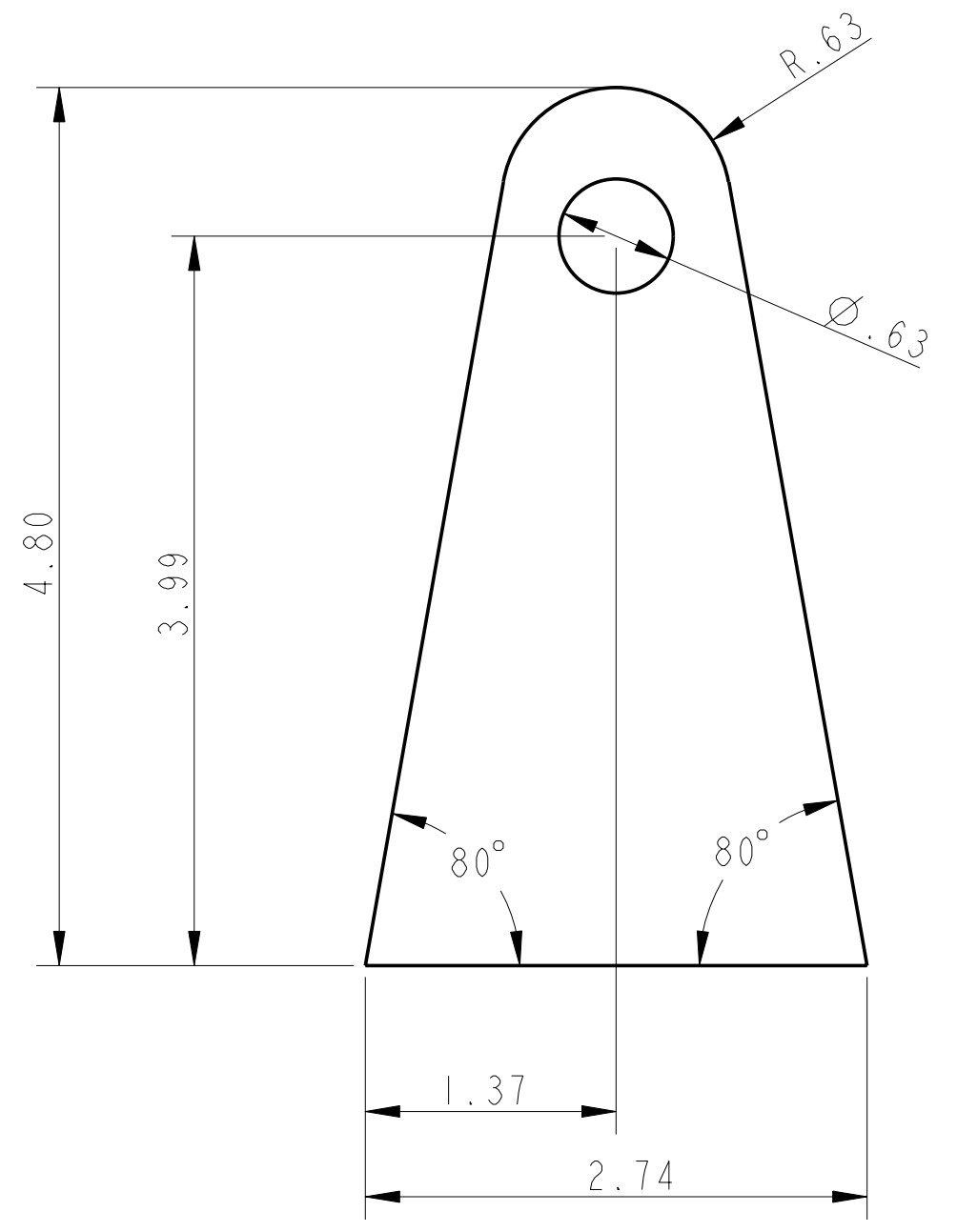


Ø3/4" ROLLER

ROLLER, 3/4" DIA. UHMW
 NOTES: SCALE=1.000
 1. MATERIAL: UHMW
 2. ALL DIMENSIONS ARE INCHES AND DEGREES
 3. ALL WELDS TO MEET AWS STANDARDS.
 4. BREAK AND DEBURR ALL EDGES
 5. BRIGHT POLISH AFTER FABRICATION

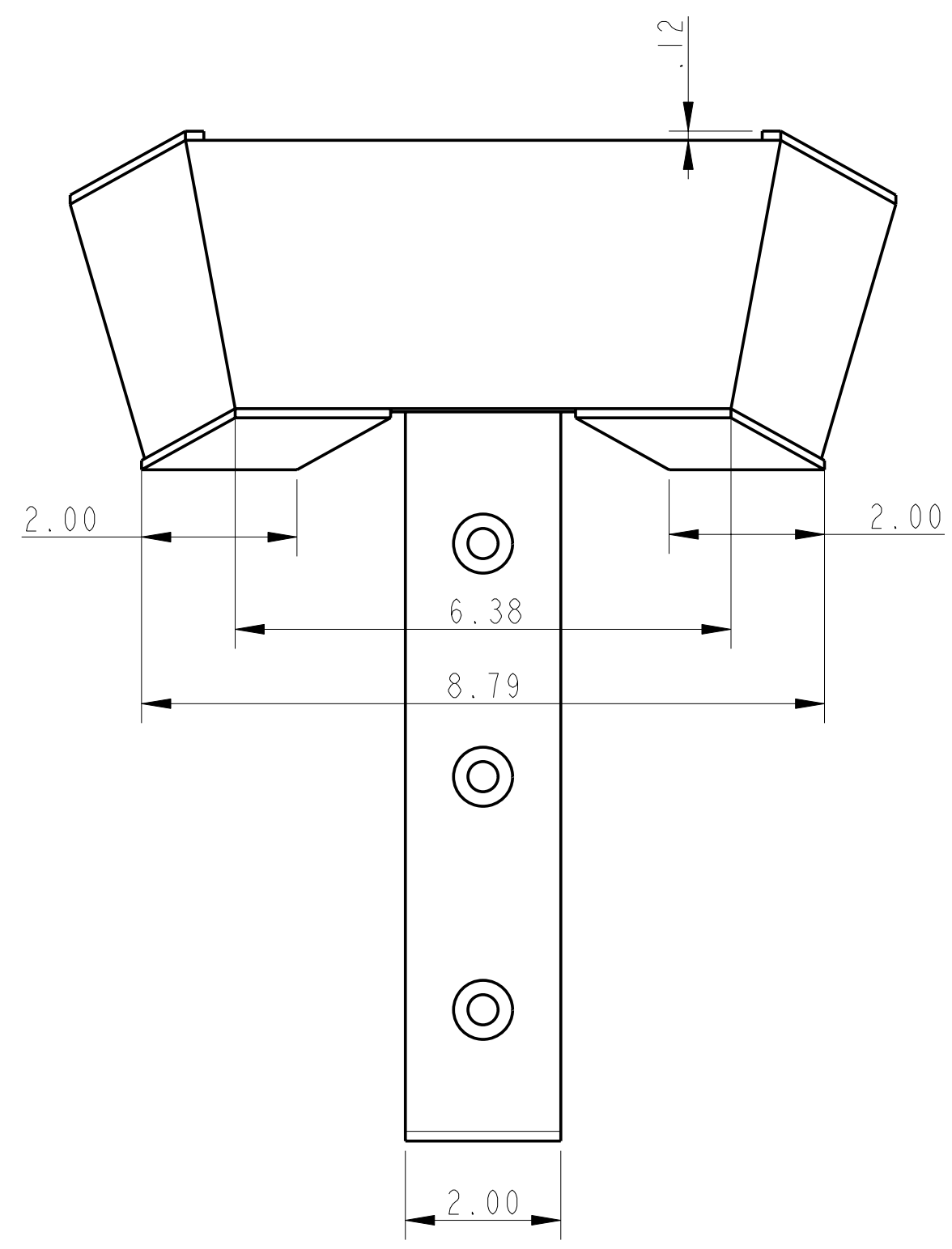
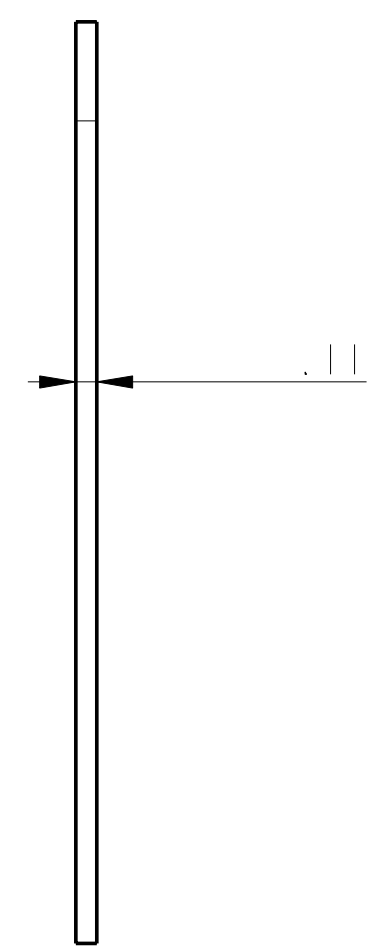


SCALE 0.250



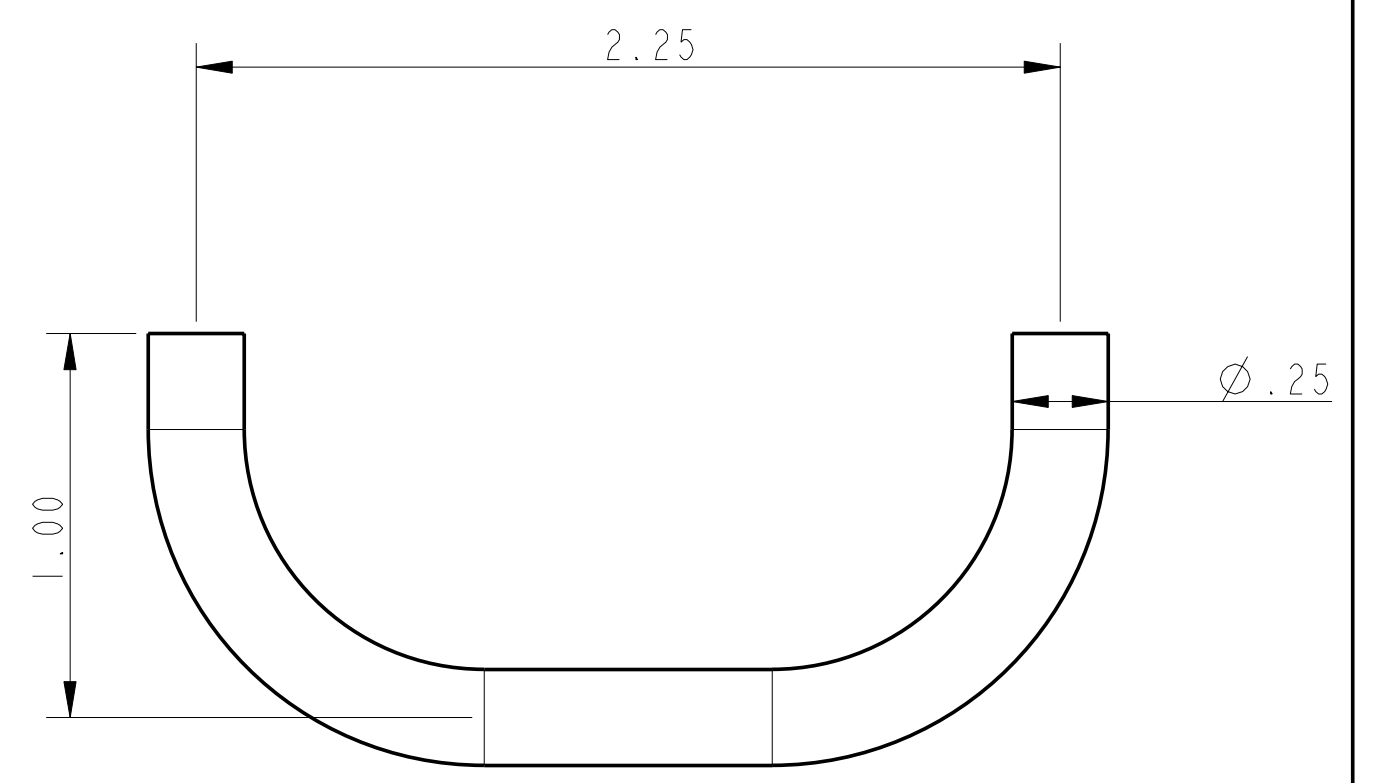
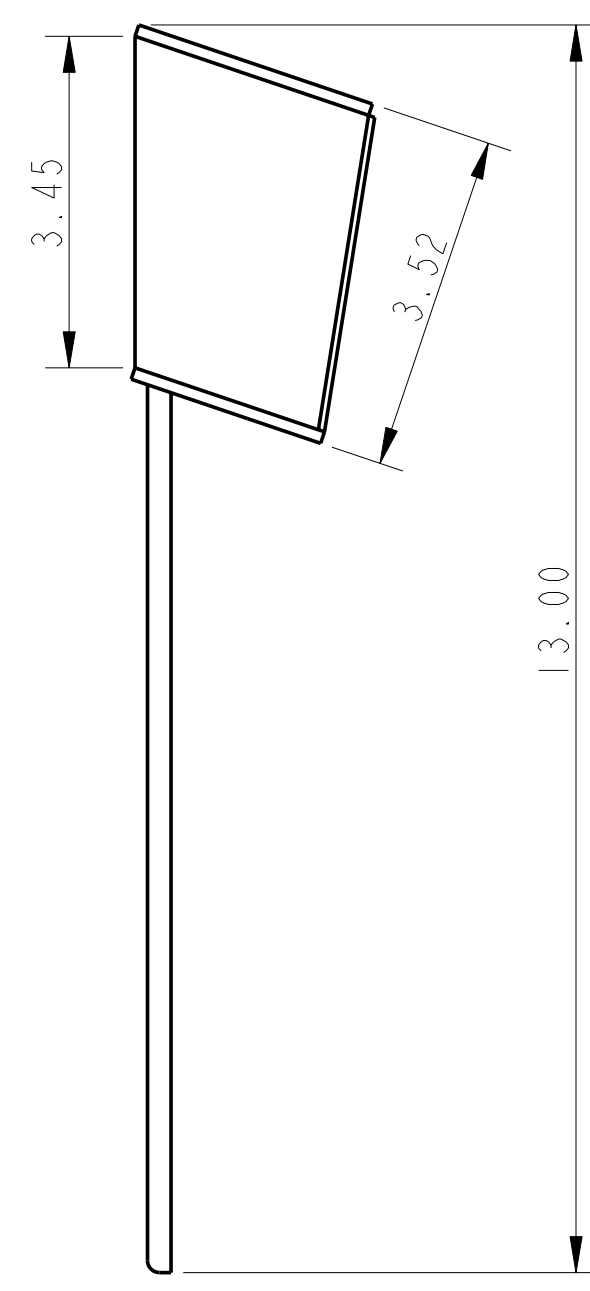
CHEEK PLATE

CHEEK PLATE 1/8" THK.
 NOTES: SCALE=1.000
 1. MATERIAL: 304 STAINLESS STEEL
 QTY: 2 PER BOAT
 2. ALL DIMENSIONS ARE INCHES AND DEGREES
 3. ALL WELDS TO MEET AWS STANDARDS.
 4. BREAK AND DEBURR ALL EDGES
 5. BRIGHT POLISH AFTER FABRICATION

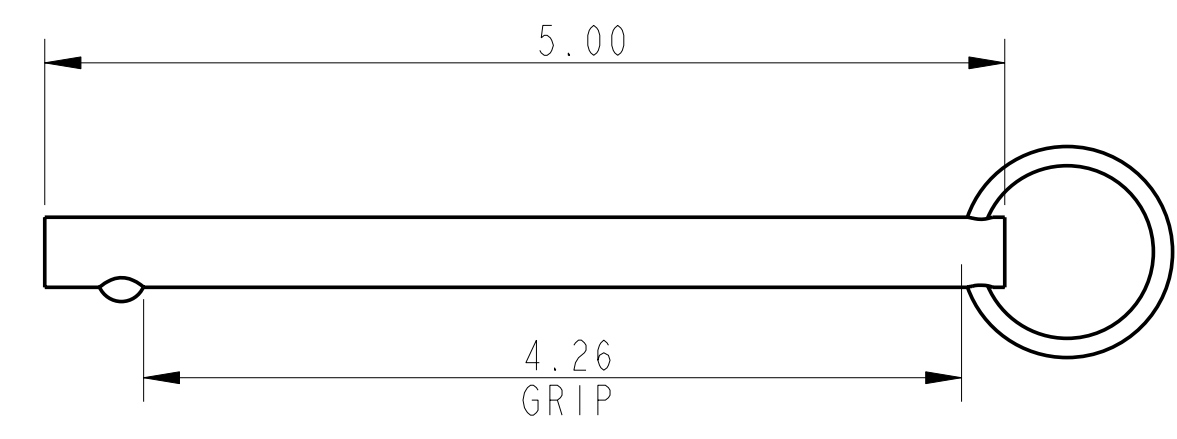


STEM PLATE

BOW ROLLER STEM PLATE
 NOTES: SCALE=0.500
 1. MATERIAL: FILL-IN
 2. ALL DIMENSIONS ARE INCHES AND DEGREES
 3. ALL WELDS TO MEET AWS STANDARDS.
 4. BREAK AND DEBURR ALL EDGES
 5. BRIGHT POLISH AFTER FABRICATION



PIN GUARD



Ø3/8" QUICK PIN