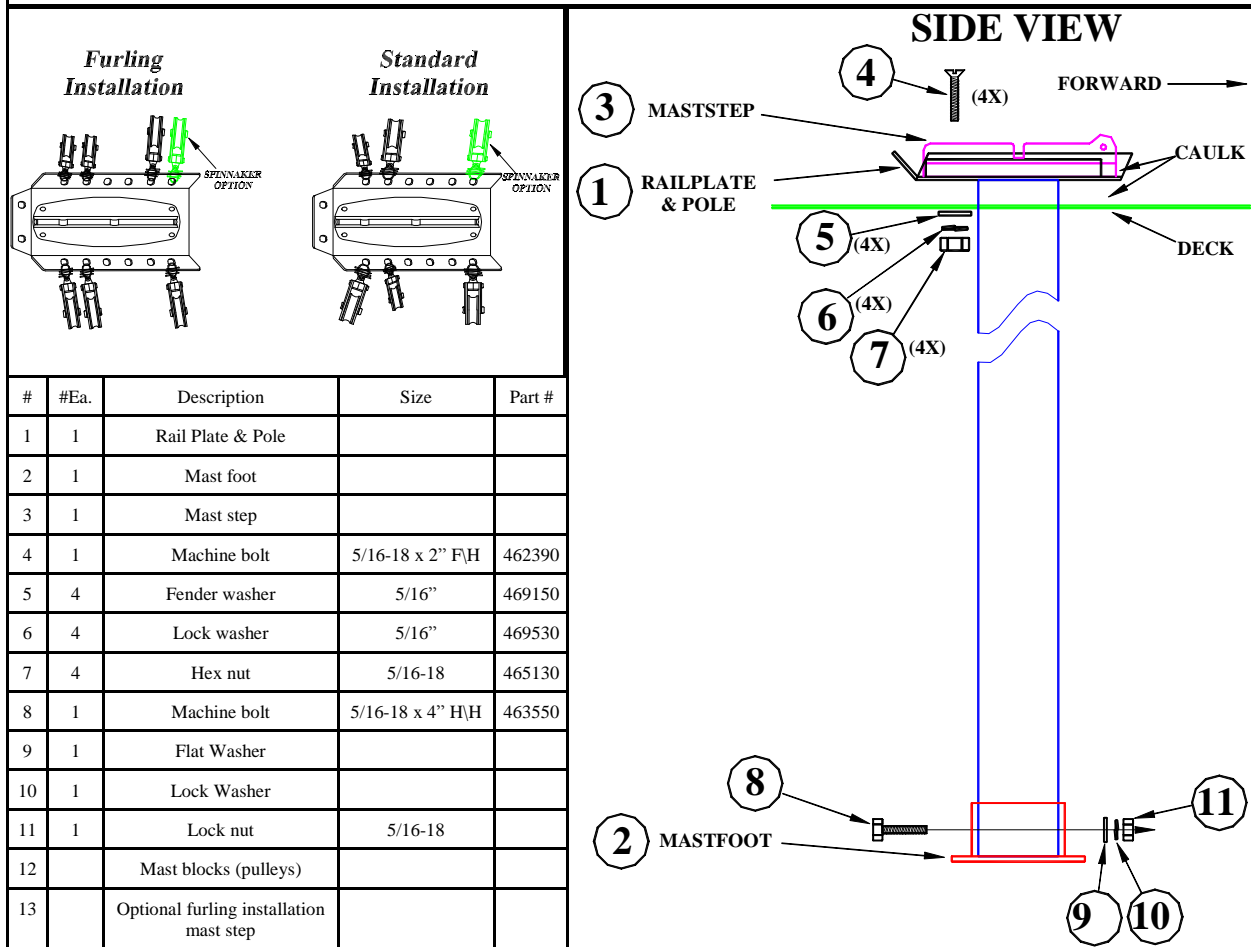


356 SOP MAST STEP INSTALLATION

Page 1 of 2



#	#Ea.	Description	Size	Part #
1	1	Rail Plate & Pole		
2	1	Mast foot		
3	1	Mast step		
4	1	Machine bolt	5/16-18 x 2" F\H	462390
5	4	Fender washer	5/16"	469150
6	4	Lock washer	5/16"	469530
7	4	Hex nut	5/16-18	465130
8	1	Machine bolt	5/16-18 x 4" H\H	463550
9	1	Flat Washer		
10	1	Lock Washer		
11	1	Lock nut	5/16-18	
12		Mast blocks (pulleys)		
13		Optional furling installation mast step		

1. Place the mast foot in position (located on the forward stringer where the sub floor cutout is in between the port and starboard bunks). The foot should rest directly on stringers.
2. Slide the mast pole thru the hole in the top deck and into the mast foot. Make sure the pole is bottomed out in the foot.
3. Measure the distance between the top of deck and the rail plate.
4. Remove the rail plate and pole assembly then cut the previously measured distance off the bottom of the pole.
5. Replace the rail plate and pole assembly then double check that the pole bottoms out in the foot and the rail plate rest on top of the deck.
6. Square the rail plate up on the deck (the open end faces forward) then place the mast step on the rail plate. Mark the mounting hole locations onto the deck where the four bolts will go thru maststep.
7. Remove the rail plate and pole assembly then drill the marked holes on the deck with a 3/8" drill bit.
8. Apply generous amounts of 5200 caulk around the holes and to the bottom of the rail plate to make a water tight seal between the two.
9. Place the rail plate and pole assembly back in position but this time slide the wooden headliner cover (finished side down) and the dining table condiment holder (trim side up) onto the pole before setting the pole down into the foot. NOTE: The foot will be attached to the stringers at a later stage.
10. Apply 5200 caulk to the bottom of the mast step then place the mast step onto the rail plate. Secure the unit to the deck using the designated fasteners (bolts, washers, lock washers, and nuts).
11. Clean up excess caulk with alcohol
12. Using the holes in the mast foot as a guide drill thru the mast pole with a 1/2" drill bit then secure the mast foot to the pole.
13. Attach the blocks (pulleys) to the rail plate as per above drawings.

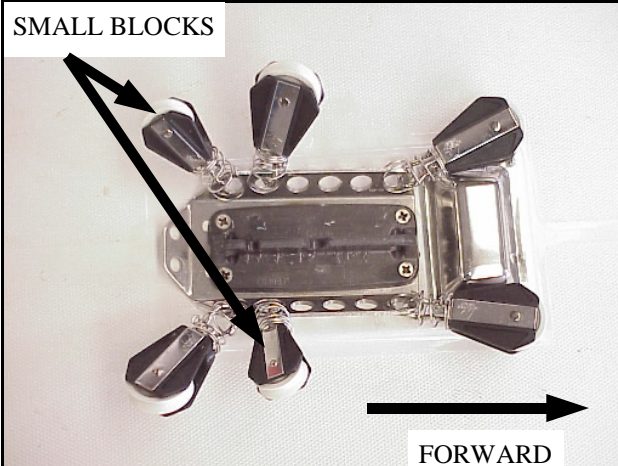
356 SOP MAST STEP INSTALLATION Page 2 of 2



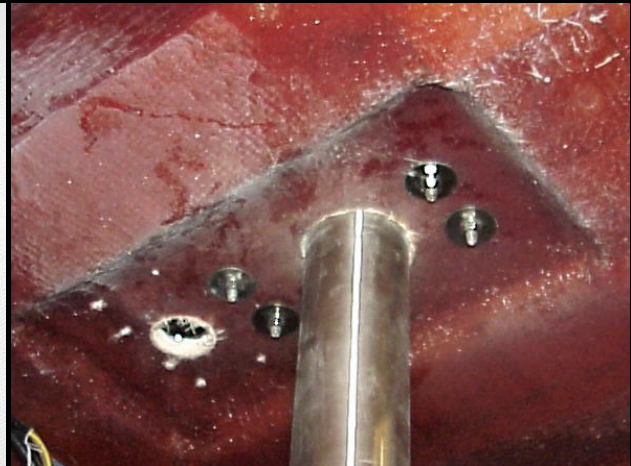
SLIDE POLE THRU WOODEN HEADLINER COVER FIRST (FINISHED SIDE GOES DOWN) THEN THRU DINING TABLE CONDIMENT COMPARTMENT (FINISHED SIDE GOES UP) BEFORE FINAL INSTALLATION. .



DRILL AND ATTACH MAST FOOT TO MAST POLE WITH A THRU BOLT. DO NOT SECURE FOOT TO STRINGER, IT WILL BE DONE AT A LATER STAGE.



TOP VIEW OF MAST STEP AND RAIL PLATE



VIEW OF FASTENERS FROM UNDERNEATH THE DECK

Revision Dates:

Expected Time: 60 min.