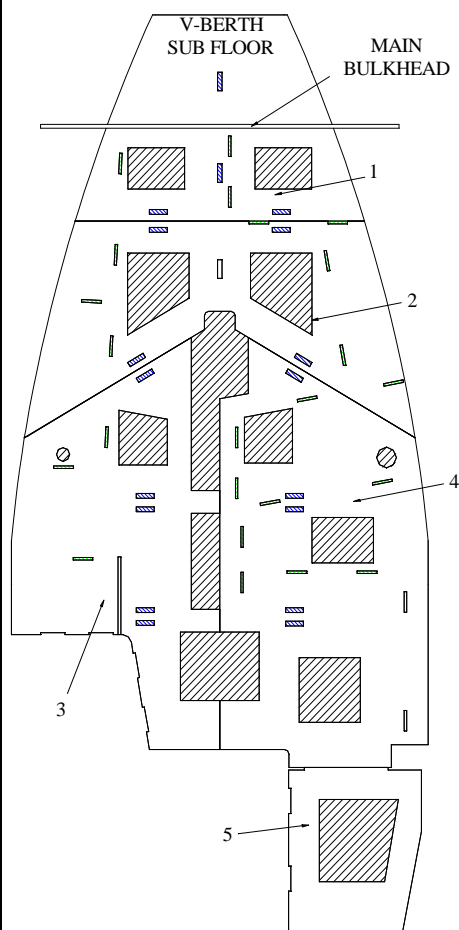


356 SOP SUB-FLOOR INSTALLATION



#	Qty.	Description	Size	Part #
1	1	Main Cabin Fwd.	356	OF80QC03
2	1	Main Cabin Center	356	OF80QC04
3	1	Main Cabin Port Aft	356	OF80QC05
4	1	Main Cabin Stbd Aft	356	OF80QC06
5	1	Aft Cabinet	356	OF80QC0

1. The v-berth sub floor is attached to the v-berth bunk assembly and was installed in that SOP.
2. Place the main cabin forward sub floor in position just aft and flush against the main forward bulkhead, locate the position with the keys in the stringers.
3. Draw a line on the main forward bulkhead where the bottom of the sub floor meets the bulkhead then remove the sub floor and attach two battens (one on each side of the stringer) to the bulkhead so the top of the battens are level with the line.
4. Replace the main cabin forward sub floor.
5. Place the main cabin center sub floor in position, locate the position with the keys in the stringers.
6. Place the main cabin port aft sub floor in position, locate the position with the keys in the stringers.
7. Place the main cabin starboard aft sub floor in position, locate the position with the keys in the stringers.
8. Drill thru the main cabin sub floor into the battens that were attached to the main forward bulkhead with a C-7 drill assembly then attach the sub floor to the battens using the designated fasteners. NOTE: Do not attach the sub floor to the stringer or the module will not be able to be lifted out of the fabrication unit.
9. The entire aft cabin sub floor will be located on the starboard-forward side of the pan and the installation instructions are covered in the pan SOP.
10. After the pan and all the sub floors have been installed attach the sub floors to each other at the seams using corrugated nails approximately every 4".

Revision Dates:

Expected Time: 30 min.