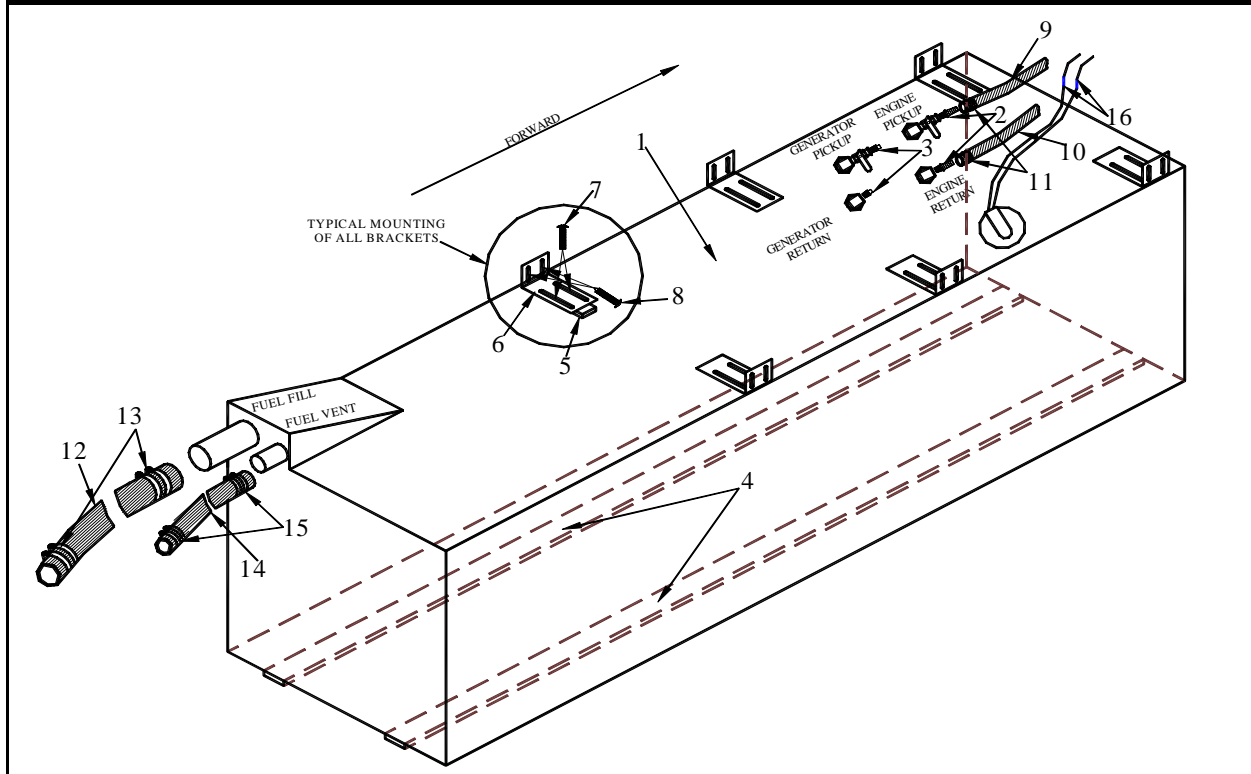
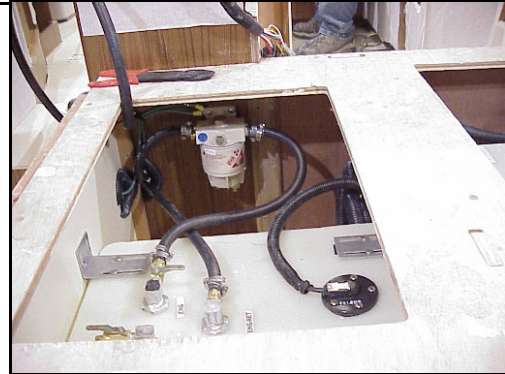
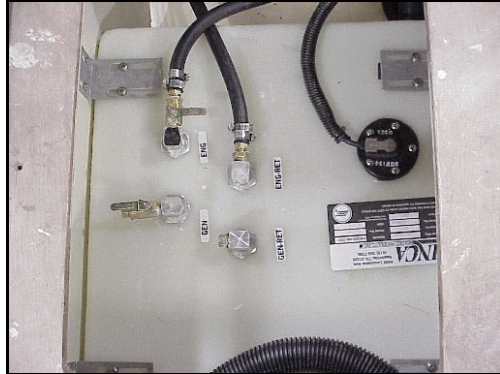


356 SOP FUEL TANK INSTALLATION

PAGE 1 OF 2

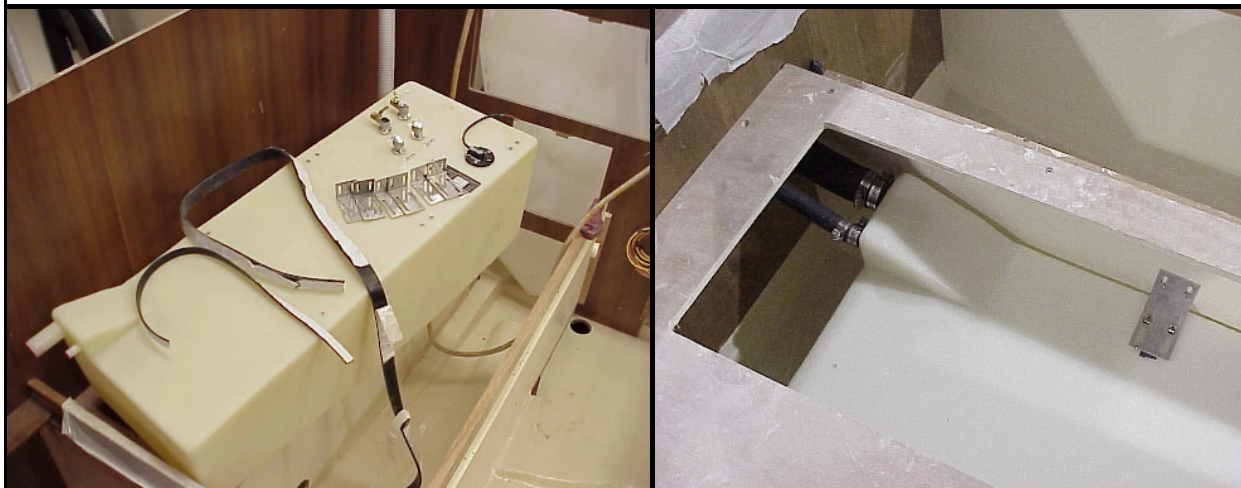


#	#Ea.	Description	Size	Part #	#	#Ea.	Description	Size	Part #
1	1	Fuel Tank	356	357119	9	1	Engine Pickup Hose	1/4" x 6'	357927
2	2	Hose Barb	1/4" MPT	354471	10	1	Engine Return Hose	1/4" x 5'	357927
3	2	Plugs	1/4" MPT		11	4	Hose Clamp	#6	353319
4	2	Neoprene Rubber	1/4" x 1-1/4"	318430	12	1	Fuel Fill Hose	1-1/2" x 11'	358251
5	6	Rubber Strips	1/8" x 3/4"	318410	13	4	Hose Clamp	#24	353445
6	6	"L" Brackets	N/A	357100	14	1	Fuel Vent Hose	5/8" x 13'	357819
7	6	Bracket Fasteners	10-24 x 1/2" P/H	467330	15	4	Hose Clamp	#10	353355
8	6	Bracket Fasteners	#10 x 1/2" P/H	466590	16	2	Blue Butt Connector	C1614-SC	257570



356 SOP FUEL TANK INSTALLATION

PAGE 2 OF 2



1. The fuel tank will go in the center compartment of the Q-berth. If the bunk top is on the starboard section of the bunk it will need to be removed. The tank will need to be prepared before placing it into position.
2. On the forward end of the top of the fuel tank are the engine (and generator) pickup and return fittings (they should be labeled on the tank). Rotate these fittings so the opening is facing generally forward (if the boat is going to have the generator option face the fittings so the generator hoses will be able to go by the engine fittings). When rotating these fittings always rotate them in a clockwise direction so as not to loosen them and create a leak.
3. Apply pipe compound to the male threads of the designated hose barbs and screw them into the engine fittings.
4. Apply pipe compound to the male threads of the designated plugs and screw them into the generator fittings. If the boat is going to have the generator option then hose barbs will go into the generator fittings.
5. On the bottom of the tank apply two long strips of the 1/4" x 1-1/4" neoprene rubber approximately 3" in from the edge.
6. Position the tank in place so it is fairly centered forward to aft in the compartment then apply a strip of the 1/8" x 3/4" rubber down the middle of the underside of each "L" bracket (see diagram).
7. Loosely attach the brackets to the fuel tank using the designated fasteners then slide the brackets out to the sides of the compartment then using a 5/32" drill bit drill the mounting hole locations (use caution not to drill all the way thru).
8. Secure the brackets to the bunk using the designated fasteners then tighten the bracket fasteners to the tank.
9. Attach the fuel pickup hose to the engine pickup fittings then secure the hose with two designated clamps. This hose will be cut so it can be attached to the fuel filter intake side and the other piece will attach to the fuel filter output side then continue to the fuel pump on the motor-- this is covered in the fuel filter SOP.
10. Connect the fuel return hose to the engine return fitting and secure the hose with two designated clamps.
11. Run the fuel fill and the fuel vent hoses from the aft end of the boat thru the two holes directly aft of the fuel tank then connect each hose to their designated nipple and secure each with the two designated clamps (make sure to take any temporary plugs out of the nipples first). Place two designated clamps on the other end of both hoses, they will be installed at a later stage.
12. Using blue butt connectors hook the wires from the sending unit to the wires in the harness in the following manner. The pink wire from the sender to the pink wire from the harness, the black wire from the sender to the yellow wire from the harness. The orange/white wire from the harness is not used at this time.
13. Wrap the wires with 1/2" flexible conduit then secure them to the side of the compartment with tie-wraps.

Revision Dates:

Expected Time: 60 min.

Page 19b