

# 356 SOP

## INSTALLATION OF THE HULL LINER

Page 1 of 2

### GENERAL INSTALLATION PROCEDURES OF THE HULL LINER:

1. NOTE: Grind down any high areas in the fiberglass so the hull glass is smooth.
2. Wipe down the interior hull where the hull liner is going, using acetone.
3. Place extra hull liner padding strips in the v-berth port locker in the recess in the bottom of the locker, anchor well fwd of the v-berth bunk, and the v-berth walls on the outside of the port and stbd. lockers, around the q-berth vent, along the bottom of the q-berth outboard wall,
4. When fitting the pieces tape approximately 1" over the top of the hull (except inside the hanging locker) to hold it in place and leave about 1" to tuck behind the lockers.
5. Trim the hull liner to fit the area it is going on, trim around the water vent then remove the hull liner.
6. Spread the glue evenly on to the interior hull.
7. Let the glue set for a moment to allow it to tack up.
8. Roll the hull liner (Lazerette) onto the hull.
9. Smooth the liner out so there are no bumps.
10. Tuck the hull liner behind hanging lockers and bulkheads.

### AREAS TO INSTALL THE HULL LINER:

#### • V-berth port and starboard side

1. Crease the bottom of the hull liner then leave about 4" on the outboard support boards, it will be covered by the V-berth bunk top.
2. If there is a gap between the hanging lockers and the hull liner pull the hull liner up enough to place a 4" strip of hull liner under the large piece of hull liner to fill the gap then tuck the hull liner behind the locker.

#### • Inside the V-berth hanging locker fit

1. Wrap the hull liner around the corners and inboard about 1" where the cedar panels go. At the top and the top of the sides where the cedar panels will not go cut the hull liner so there is approximately 3/8" left to tuck behind the locker then tuck this behind the locker.

#### • Q-berth starboard side

1. There are five areas on the stbd Q-berth hull wall that will need to be double and triple layered so the hull liner will look smooth when complete. (See pictures for all five areas). Cut small pieces of the hull liner material to fill in these areas.  
The one area that is tripled padded is the sump pump discharge. Cut a hole in the hull liner to allow the sump pump discharge thru hull fitting to fit thru.  
Three of the areas that are doubled padded are on the trailing ends of the balsa.  
Two of these areas are behind the hanging locker and the fwd night stand. One is aft of the stbd. Hull window. ( Place no padding under the hull window, the Q-berth shelf will be placed there.) And the fourth area to be double padded is in the aft night stand.
2. Place the hull liner so about 3" will go on the bonded area of the aft galley bulkhead (cut slits in the hull liner to accommodate the curvature of the hull). Cut slits as needed to fit the hull liner behind and/or along side of the bunk supports and Q-berth aft locker. The hull liner should extend about 3" aft of the aft kickboard.

#	Qty.	Description	Size	Part #	#	Qty.	Description	Size	Part #
1	1 set	Hull Liner Kit	356	606531	2	1	Brushable Contact Cement	NA	100200

Revision Dates:

**Expected Time: 60 min.**

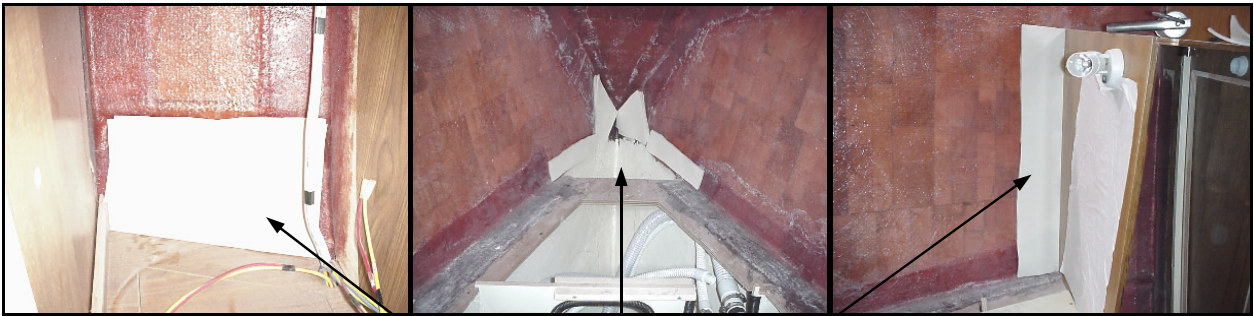
**Page**

# 356 SOP INSTALLATION OF THE HULL LINER

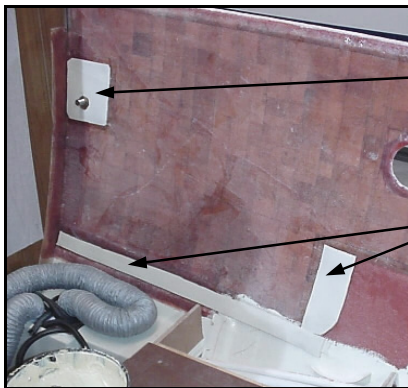
Page 2 of 2



CUT SLITS  
IN THE Q-  
BERTH  
LINER.



DOUBLE LAYER THESE  
AREAS IN THE V-BERTH



TRIPLE LAYER THIS AREA  
IN THE Q-BERTH

DOUBLE LAYER THESE  
AREAS IN THE Q-BERTH

