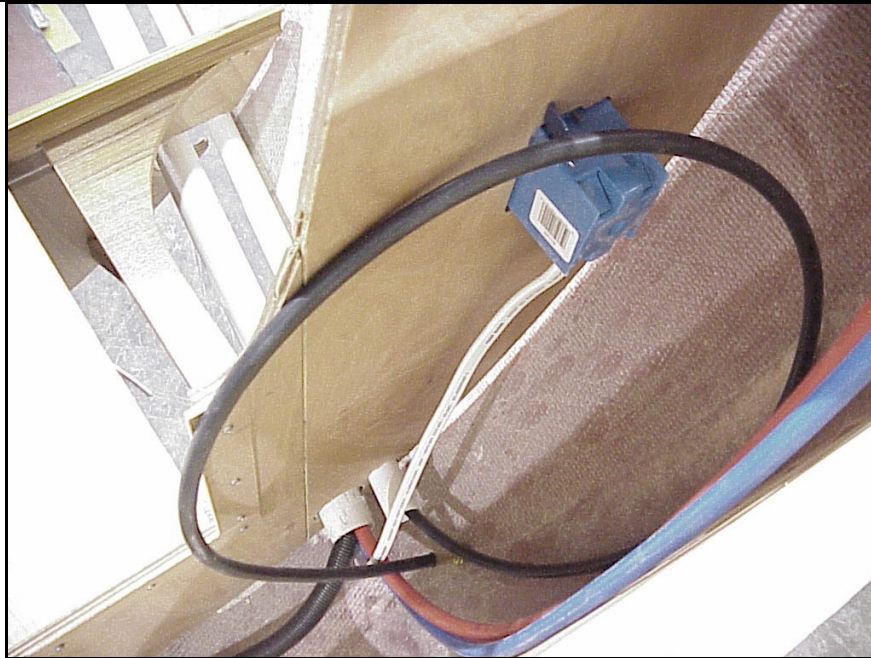


356 SOP LPG HOSE RUN INSTALLATION



<ol style="list-style-type: none"> 1. Starting at the aft-starboard end of the boat run the LPG hose forward thru the 1-1/4" PVC pipe. When the hose comes out the forward end of the pipe continue forward then up into the area of the galley cabinet that the oven and/or stove will go. 2. Loop up and secure both ends of the hose so it will not fall into the way when the module is placed into the hull. 	#	Qty.	Description	Size	Part #
	1	1	LPG Hose	5/16" X 20'	316930
Revision Dates:			Expected Time:		Page