

356 SOP LPG TANK INSTALLATION (page 1 of 2)

HOLDING TANK PREPARATION

1. The fittings will be attached to the LPG holding tank before it is installed into the boat.
2. Place the LPG regulator on the flat area in the center of the large curved wall so the top of the bracket is 3-1/2" down from the lip of the holding tank (this will put the top of the gauge on the regulator about 1" down from the lip of the tank. Mark the mounting hole locations.
3. Drill the marked locations with a 5/32" drill bit then caulk the hole with white 739 caulk and secure the regulator to the holding tank with #10 X 1/2" panhead screws.
4. Measure 1-1/2" to 2" down from the bottom right corner of the regulator bracket and mark this location then continue down another 1-1/2" to 2" and mark this location as well.
5. Drill the first location with a 1-3/8" hole-saw (drill from the inside of the holding tank going out) and drill the lower mark with a 3/4" hole-saw (again from the inside going out).
6. Clean the fittings and the tank where the fittings are going with alcohol then caulk the backside of the fittings where they will come in contact with the tank using white 739 caulk.
7. Place the LPG hose seal in the 1 3/8" hole from the inside of the tank then secure it to the tank with the plastic nut that comes with the seal.
8. Place LPG wire chafe guard in the 3/4" hole from the inside of the tank then secure the guard to the tank with the plastic nut that comes with the guard. Put the blue and black wires from the LPG regulator thru the tube in the wire chafe guard.
9. In the bottom of the holding tank is an embossment for drainage and/or venting. In the center of the deep end drill a 7/8" hole with a hole-saw. The 90 degree drain fitting will go here.
10. Clean the hardware and tank with alcohol then caulk around the hole and secure the drain elbow to the tank so the elbow faces outboard and the top of the fitting is flush with the top of the nut.

HOLDING TANK INSTALLATION

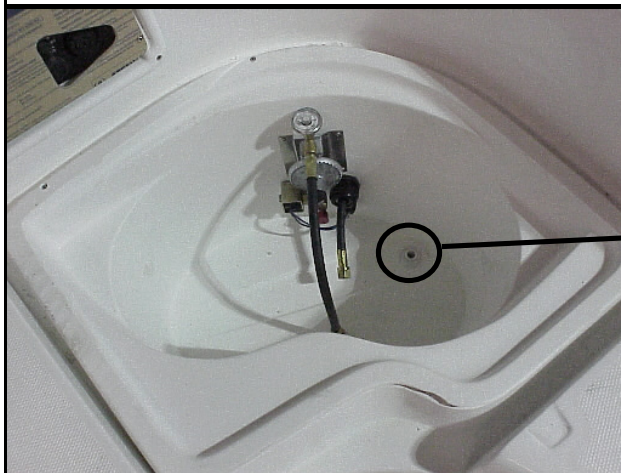
1. The holding tank fits under the starboard gullwing seat and will not be permanently installed until after the boat has been decked and the several hoses are hooked up as this compartment is how access is gained to those hoses.
2. The LPG hose and wires will come out of the lower-aft-starboard corner of the aft kickboard. Pull the LPG hose from the stove thru the hose seal then connect and tighten the hose to the fitting on the bottom of the regulator. Tighten the hose seal so the hose is secured and sealed.
3. Attach the blue wire from the LPG regulator to the orange and red wire from the boat harness using the butt plug attach to the wire on the harness.
4. Attach the black wire from the LPG regulator to the to the 16 gauge yellow wire from the boat harness using the butt plug attach to the wire on the harness.
5. Attach the loose end of the drain/vent hose coming from the LPG vent located on the hull just starboard of the waste tank the drain elbow on the bottom of the holding tank using two #12 hose clamps.
6. Lower the holding tank into position then drill down thru the four corners and the center of the large curve with a C-7 drill assembly. Attach the holding tank to the deck with #8 X 1" flathead screws.

#	#Ea.	Description	Size	Part #	#	#Ea.	Description	Size	Part #
1	1	LPG Holding Tank	356	270230	5	1	LPG Wire Chafe Guard	Comes with regulator	NA
2	1	LPG Regulator	356	316940	6	4	LPG Regulator Fasteners	#10 x 1/2" PH	466590
3	1	LPG Hose Seal	Comes with regulator	NA	7	2	Drain Hose Clamps	#12	
4	1	LPG Drain Fitting	Comes with regulator	NA	8	5	Holding Tank Fasteners	#8 X 1"	

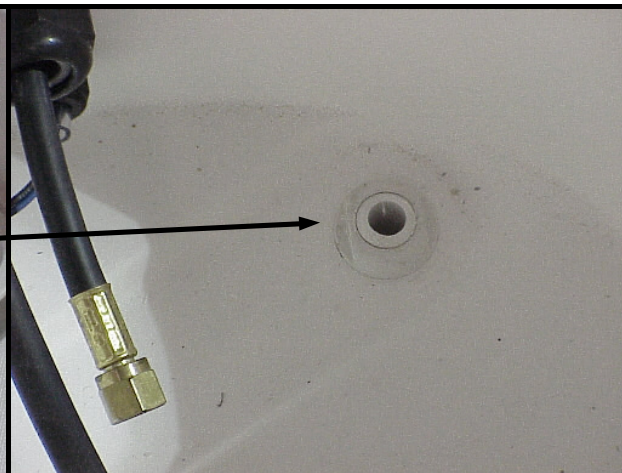
Revision Dates:

Expected Time: 30 min.

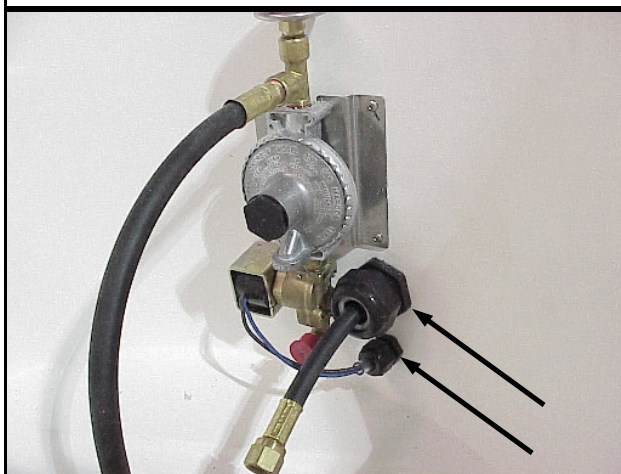
356 SOP LPG TANK INSTALLATION (page 2 of 2)



PLACE REGULATOR ON THE FLAT SPOT IN THE CENTER OF THE LARGE CURVE SO THE TOP OF THE BRACKET IS 3-1/2" BELOW THE LIP, THIS WILL MAKE THE TOP OF THE GAUGE @ 1" LOWER THAN THE LIP.



DRAINAGE ELBOW TO BE CENTERED IN THE DEEP END OF THE EMBOSMENT ON THE BOTTOM OF THE HOLDING TANK. THE TOP OF THE ELBOW SHOULD BE FLUSH WITH THE TOP OF THE NUT.



HOSE SEAL FITTING APPROXIMATELY 2" DOWN FROM THE LOWER-RIGHT CORNER OF THE BRACKET, WIRE CHAFE GUARD APPROXIMATELY 2" LOWER THAN HOSE SEAL. PUT REGULATOR WIRES THRU THE WIRE CHAFE



OUTSIDE OF HOLDING TANK; NOTICE FITTINGS ARE CAULKED WELL, DRAIN ELBOW FACES OUTBOARD, AND REGULATOR WIRES ARE THRU WIRE CHAFE