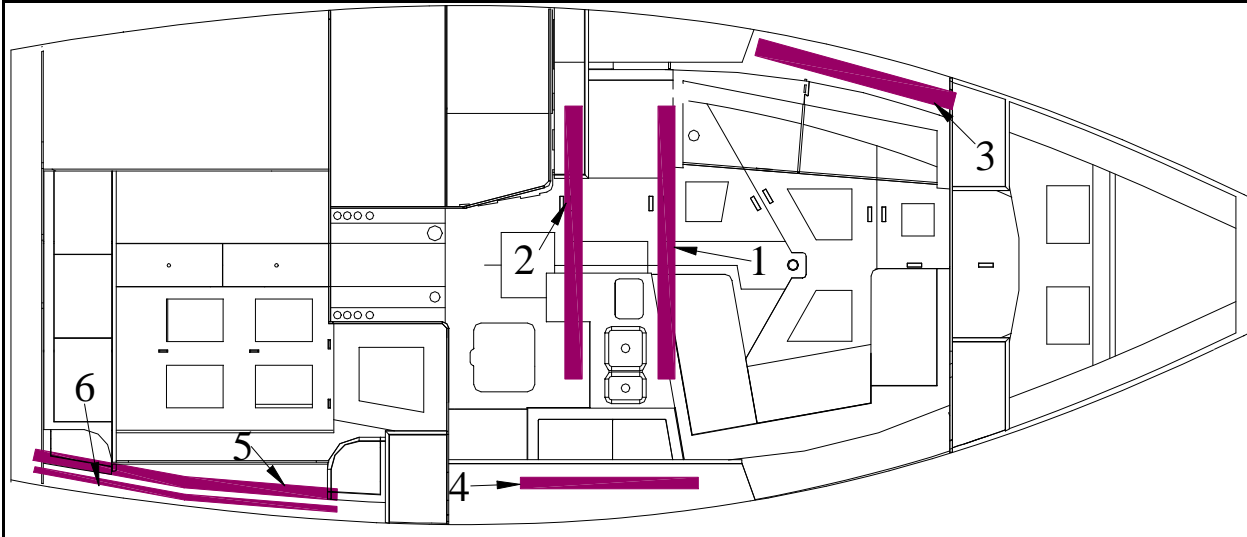


# 356 SOP PVC PLACEMENT INSTALLATION

Page 1 of 2



#	Qty.	Description	Size	Part #	#	Qty.	Description	Size	Part #
1	1	PVC Pipe	2" x ? (PR) 160	358737	5	1	PVC Pipe	1-1/2" X ? (Sch) 160	358683
2	1	PVC Pipe	2" x ? (PR) 160	358737	6	1	PVC Pipe	1" x 7' (PR 160 Thin Wall)	358647
3	1	PVC Pipe	2" x ? (PR) 160	358737	7	8	PVC Fasteners	#10 x 1" F/H	461050
4	1	PVC Pipe	1-1/2" X ? (Sch) 160	358683					

1. Two PVC pipes (#1 & #2 in the drawing) will need to be put in right after the sub floors are installed and before the furniture is installed. The other pipes will need to be put in after the furniture is installed as they go thru holes in the furniture.
2. One of the 2" pipes, #1, will need to have two holes cut into it to allow wires from the harness to drop out. The holes should be about 3" - 4" long. Cut the first hole \_\_\_\_" from the end and the other hole in the middle of the pipe. These holes should be cut on a bandsaw.
3. Place the #1 pipe under the sub floor and against the forward side of the mid beam. Hold the pipe up to the underside of the floor so the middle hole is facing forward and centered over the keel area. Drill thru the sub floor and the pipe with a C-7 drill assembly then secure the pipe to the floor using the designated fasteners. Secure the pipe to the sub floor in this fashion in six places that are somewhat evenly spaced.
4. Place the #2 pipe under the sub floor against the forward side of the aft beam then secure it to the underside of the sub floor in the same manner as the first pipe.
5. After the furniture has been installed (at least the piece the pipe will go thru) the other pipes can be installed.
6. Place the #3 pipe thru the holes in the supports of the port bunk locker and the V-berth port hanging locker. The forward end of the pipe should extend into the bottom of the hanging locker about 1" which will place the aft end about two-thirds thru the aft compartment of the bunk.
7. Place the #4 pipe under the galley ice box. The forward end will go thru a hole-notch in the galley and the aft end will need to be held up with a tie-wrap secured to the galley.
8. Pipes #5 & #6 will run side by side thru holes in the starboard side of the aft kickboard and the Q-berth bunk.

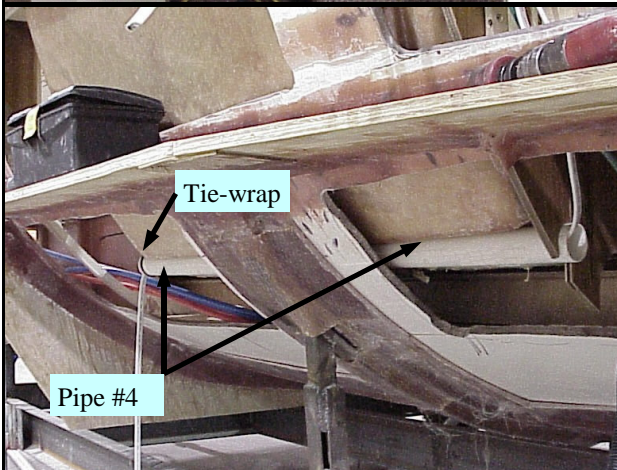
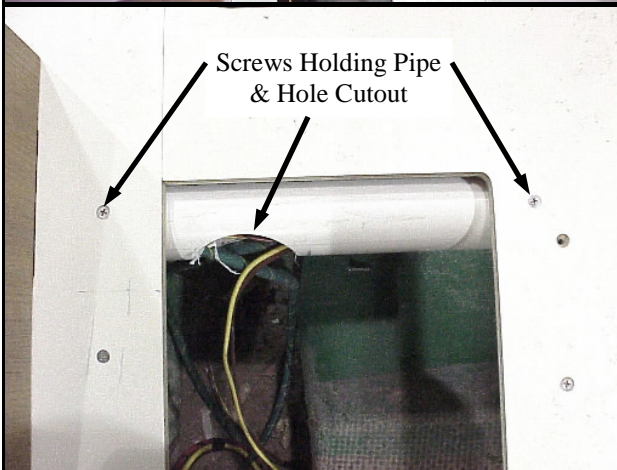
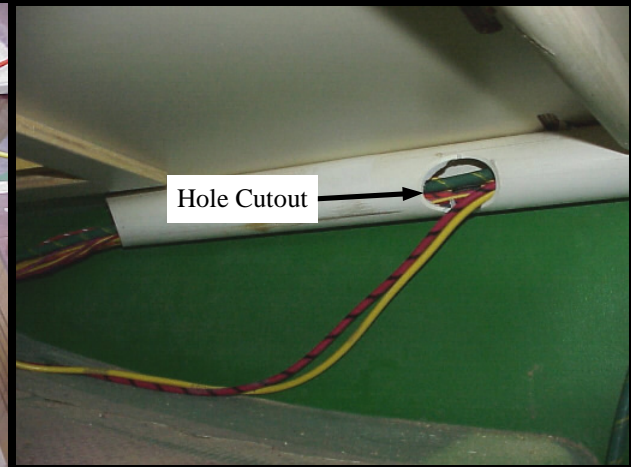
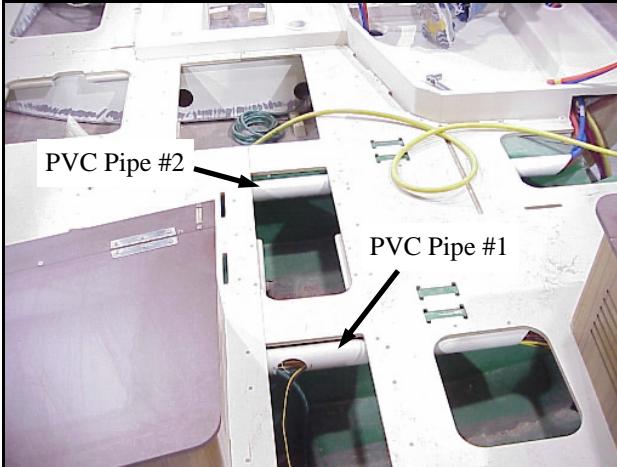
Revision Dates:

Expected Time:

Page

# 356 SOP PVC PLACEMENT INSTALLATION

Page 2 of 2



Revision Dates:

Expected Time:

Page