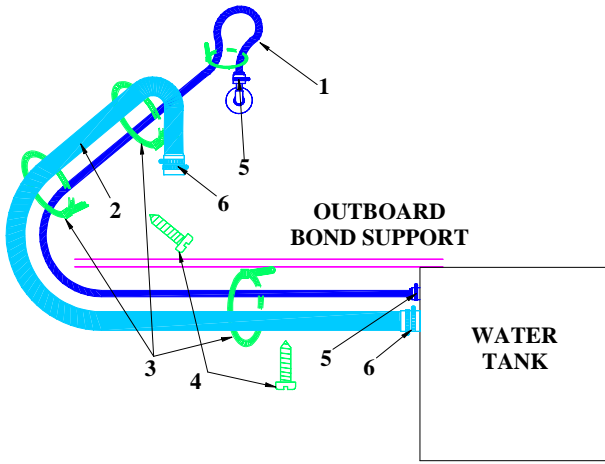


356 SOP WATER VENT AND WATER FILL HOSE INSTALLATION



#	#Ea.	Description	Size	Part #
1	1	Vent Hose	3/4" x 7.5'	358017
2	1	Water Fill Hose	1-1/2" X 6.5'	357981
3	5	Tie Wraps	*7 W/Eye	460210
4	5	Tie Wraps Fasteners	#10 x 3/4" P/H	466670
5	2	Vent Hose Clamps	#10	353355
6	4	Fill Hose Clamps	#24	353427

1. Connect the vent hose and the water fill hose to the appropriate fittings on the water tank using the designated hose clamps (one on the vent hose, two on the fill hose).
2. Run the water fill and vent hoses from the water tank forward under the starboard outboard support board. Attach the hoses to the underside of the support board in one place with the designated tie wrap and fastener.
3. Continue to run the hoses forward then up the starboard side of the anchor well bottom. Attach the hoses to the anchor well bottom with the designated tie wraps and fasteners.
4. On the end of the vent hose make a 6" loop and loosely tie wrap the hose together. Connect the vent hose to the vent using the designated clamp.
5. Place the two designated clamps on the fill hose so it may be attached to the water deck plate at a later stage.

Revision Dates:

Expected Time: 5 min.

Page 3