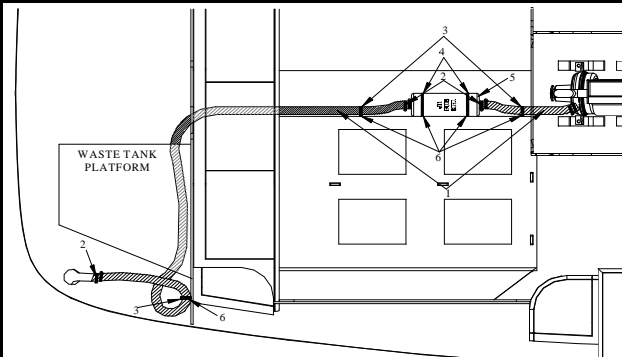
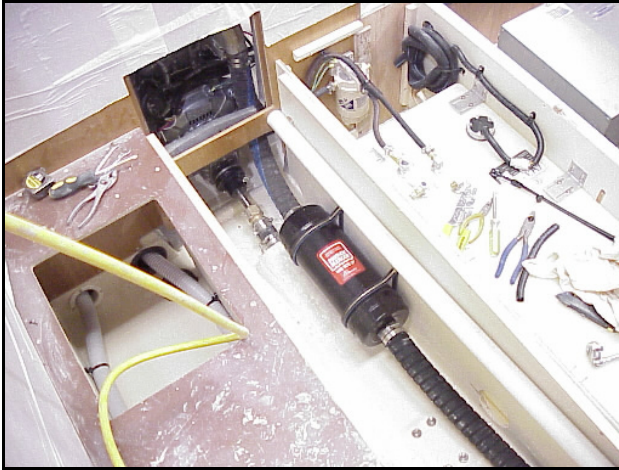


# 356 SOP WATERLOCK INSTALLATION



#	#Ea	Description	Size	Part #
1	2	Exhaust Hose	2.5' & 17'	358485
2	8	Exhaust Hose Clamps	#32	353463
3	3	Exhaust Hose Secure	DG40	353211
4	2	Waterlock Secure Clamp	DG104	353175
5	1	Waterlock	2"	355983
6	5	Exhaust Hose Secure Fasteners	#10 x 3/4" P/H	466670



1. Connect the shorter piece of exhaust hose up to the engine exhaust using the designated clamps.
2. Attach the other end of the exhaust hose to the waterlock using the designated clamps. NOTE: The label on the waterlock that reads "THIS SIDE UP" must be up and be orientated so it can be read from the aft end of the boat (not upside-down).
3. Secure the forward exhaust hose to the starboard wall of the strut compartment between the waterlock and the aft engine box bulkhead using the designated clamp and fastener.
4. Place the waterlock secure clamps around the aft and forward ends of the waterlock and secure it to the hull using the designated fasteners. NOTE: Position the waterlock vertically so the hose from the engine is level from where it is clamped to the waterlock.
5. Run the aft exhaust hose down the starboard side of the strut compartment then thru the bottom holes in the aft storage locker, next go port and run the hose under the waste tank platform up to the top of the hull then loop the hose back down and connect the aft end of the hose to the exhaust tube fiberglassed into the hull. NOTE: Check to see if hull has been drilled thru where the inside of the exhaust tube meets the hull, if it has-n't then drill thru with a 1-3/4" hole saw with a long extension.
6. Attach the forward end of the aft exhaust hose to the waterlock using the designated clamps.
7. Secure the aft exhaust hose to the starboard wall of the strut compartment between the waterlock and the storage cabinet using the designated clamp and fastener.
8. Secure the exhaust hose at the top of the loop using the designated clamp and fastener.

Revision Dates:

Expected Time: 30 min.

Page 29