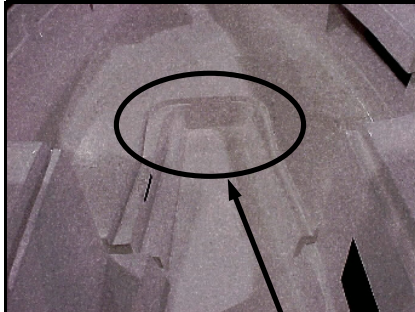


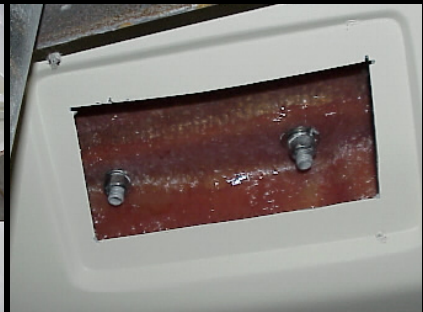
356 SOP STEERING PEDESTAL & DRAGLINK INSTALLATION



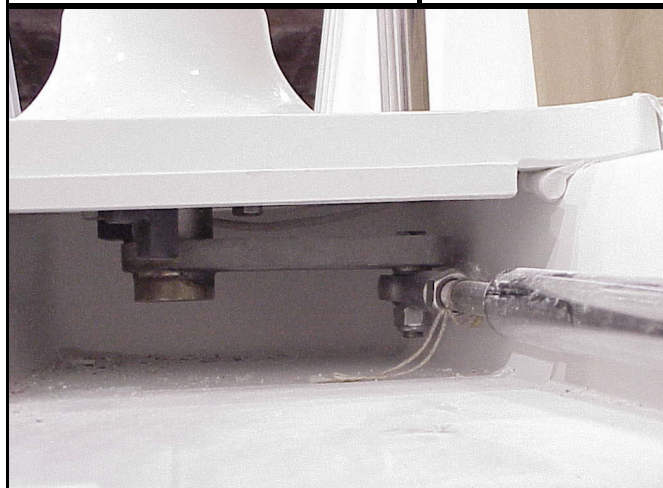
EMBOSSMENT IN THE COCKPIT AREA WHERE THE STEERING PEDESTAL GOES



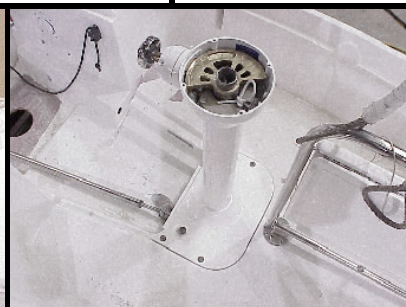
PEDESTAL IN EMBOSSMENT, MAKE SURE PEDESTAL IS SLID ALL THE WAY FORWARD THEM MARK MOUNTING HOLE LOCATIONS



UNDERSIDE OF DECK SHOWING ACCESS CUTOUT IN HEADLINER AND MOUNTING FASTENERS (ONE SIDE ONLY- THE OTHER SIDE IS THE SAME)



DRAGLINK HOOKED TO THE BOTTOM OF THE STEERING PEDESTAL



OVERVIEW OF STEERING PEDESTAL AND DRAGLINK INSTALLED

#	#Ea.	Description	Size	Part #
1	1	Steering Pedestal	89000000	311694
2	1	Draglink	89000001	311649
3	4	Pedestal Fasteners	1/2 -13 X 2-1/2" F/H	462540
4	4	Flat Washer	1/2"	469350
5	4	Lock Washer	1/2"	469450
6	4	Hex Nut	1/2 -13	465050

1. The deckrigging stage is where the draglink will be installed on the steering pedestal and the pedestal is permanently mounted.
2. Place the steering pedestal into the embossment located in the cockpit area and make sure the pedestal is slid all the way forward.
3. Mark the mounting hole locations.
4. Remove the pedestal then drill the marked locations using a 1/2" drill bit.
5. Dremel all holes to expose raw edge of glass (only edge of hole).
6. Lay the pedestal so there is access to the bottom then remove the lock nut on the bolt welded to the end of the arm and slip one end of the draglink onto the bolt. Replace the locknut and tighten well.
7. Clean the surface of the deck and hardware with alcohol.
8. Caulk the mounting holes with white 739 caulk.
9. Secure the steering pedestal to the deck using 1/2" flathead bolts, flat washers, lock washers, and hex nuts .
10. Clean up excess caulk with alcohol.

Revision Dates:

Expected Time: 15 min.