

HUNTER 386



DISCOVER THE DIFFERENCE

30 
YEARS

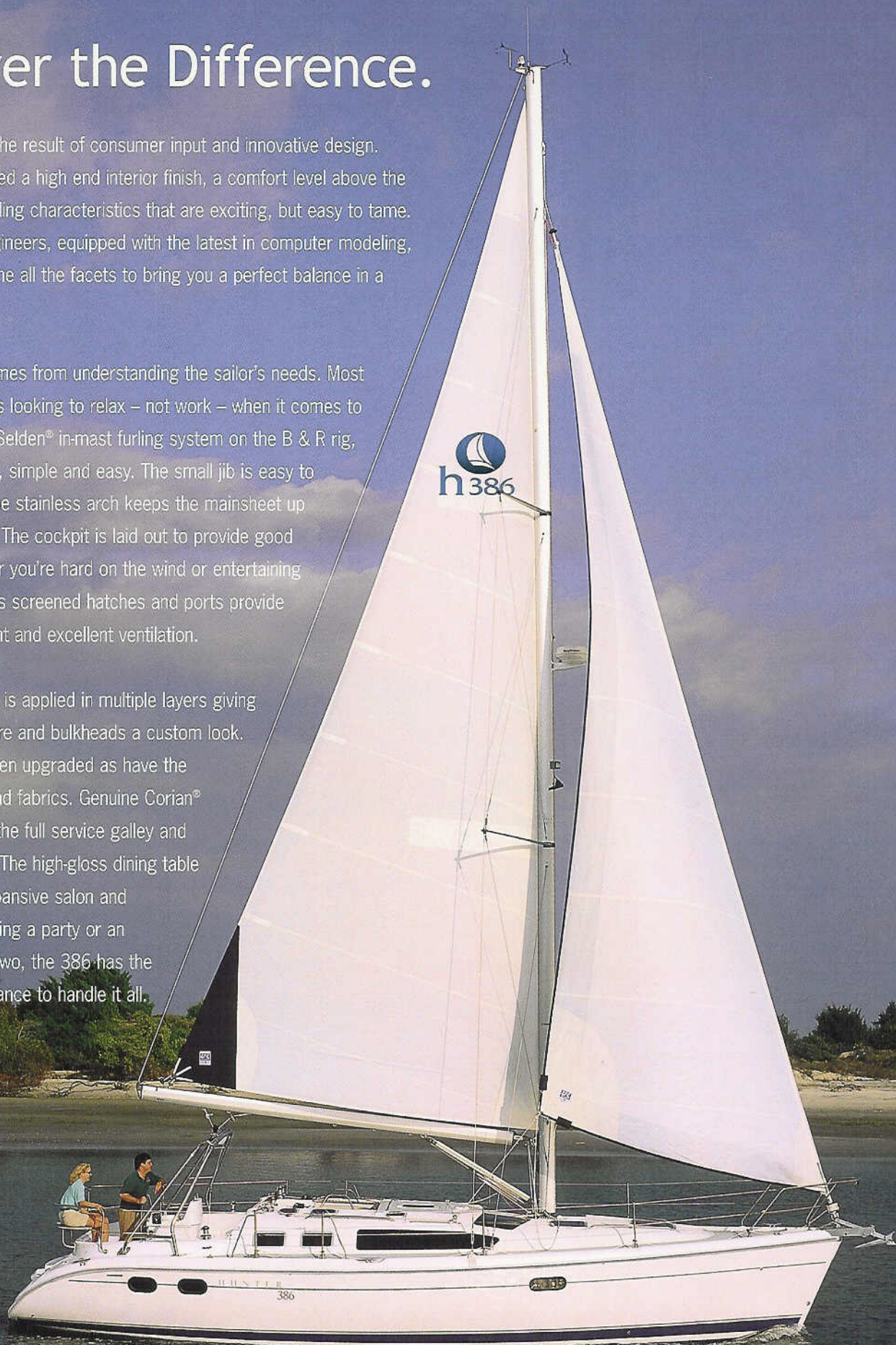
Discover the Difference.

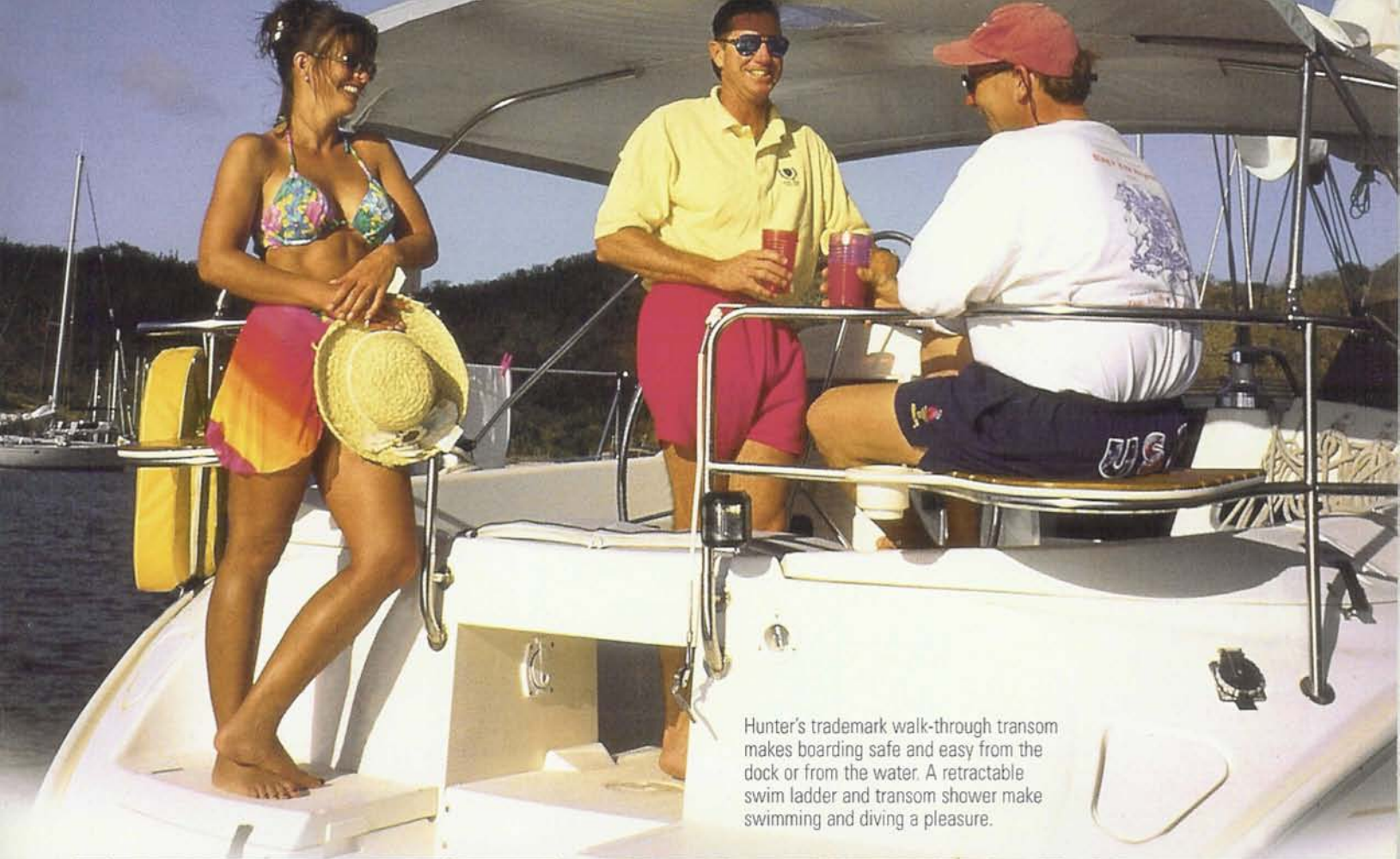
The Hunter 386 is the result of consumer input and innovative design. Prerequisites included a high end interior finish, a comfort level above the competition and sailing characteristics that are exciting, but easy to tame. Hunter Marine's engineers, equipped with the latest in computer modeling, were able to combine all the facets to bring you a perfect balance in a cruising boat.

The deck layout comes from understanding the sailor's needs. Most cruisers are couples looking to relax – not work – when it comes to setting sail. With a Selden® in-mast furling system on the B & R rig, sail handling is safe, simple and easy. The small jib is easy to tack and furl plus the stainless arch keeps the mainsheet up and out of the way. The cockpit is laid out to provide good ergonomics whether you're hard on the wind or entertaining dockside. Numerous screened hatches and ports provide plenty of natural light and excellent ventilation.

A new interior finish is applied in multiple layers giving the rich teak furniture and bulkheads a custom look.

All hardware has been upgraded as have the plumbing fixtures and fabrics. Genuine Corian® countertops adorn the full service galley and the spacious head. The high-gloss dining table is central to the expansive salon and whether you're hosting a party or an intimate dinner for two, the 386 has the space and the elegance to handle it all.





Hunter's trademark walk-through transom makes boarding safe and easy from the dock or from the water. A retractable swim ladder and transom shower make swimming and diving a pleasure.



▲ ABOVE — The cockpit of the 386 is wide and inviting. The custom console houses your electronics, drink holders and flip up tables. Perfect for al fresco dining.

▲ ABOVE LEFT — The standard stainless steel arch provides an extra handhold and the taffrail seats are the best in the house.

◀ BELOW LEFT — The optional windlass is mounted below deck level above the deep chainfall. This provides an extra measure of safety and lowers maintenance as well.





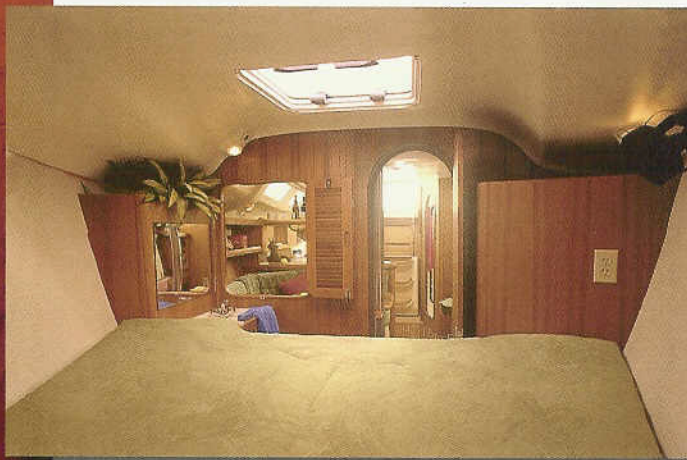


▲ Double stainless steel sinks, dual burner propane stove and twin access icebox are all surrounded in genuine Corian®. Storage is plentiful and easily accessed. Heavy teak fiddles double as handholds and we even hide the trash receptacle.

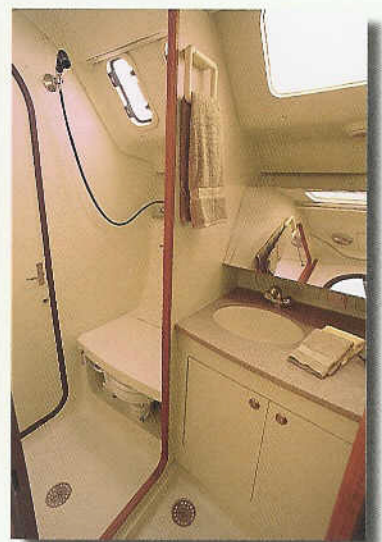


◀ The extra beam of the 386 is truly evident in the aft stateroom. Wide and very comfortable; you'd think you are in a much larger boat.

Privacy, storage and comfort; ▶ your friends may never want to leave! Abundant natural light and good ventilation in the forward stateroom will please them all.



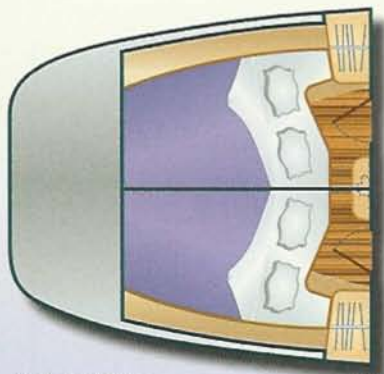
A separate compartment houses the ▶ MSD and the shower from the Corian®-covered vanity. Clean up is simple and fast with the fiberglass liner.



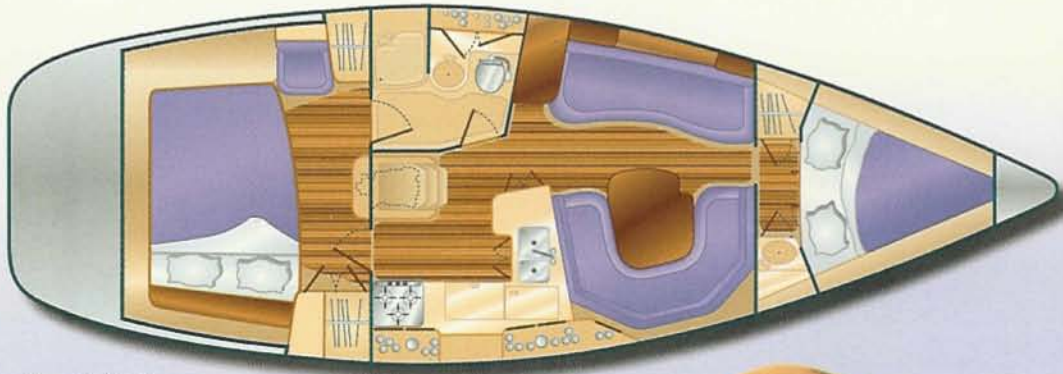
SPECIFICATIONS

Length Overall	38'3".....11.66 m	Sail Area (actual)	811 ft ²75.34 m ²
Hull Length	37'1".....11.30 m	I	48'0".....14.63 m
Waterline Length	32'0".....9.75 m	J	12'11".....3.94 m
Beam	12'7".....3.84 m	P	46'8".....14.22 m
Draft (Shoal)	5'0".....1.53 m	E	18'5".....5.62 m
Draft (Deep)	6'6".....1.98 m	Headroom	6'6".....1.98 m
Displacement (Shoal)	16,000 lb.....7,264 kg	Fuel Capacity	30 gal.....110 L
Displacement (Deep)	15,595 lb.....7,080 kg	Water Capacity	75 gal.....280 L
Ballast (Shoal)	5,900 lb.....2,679 kg	Holding Tank Capacity	30 gal.....110 L
Ballast (Deep)	5,495 lb.....2,495 kg	Water Heater	6 gal.....23 l
Mast Height	59'6".....18.14 m	Aux Power (Yanmar)	40 HP.....29.8 KW
		CE Classification	A

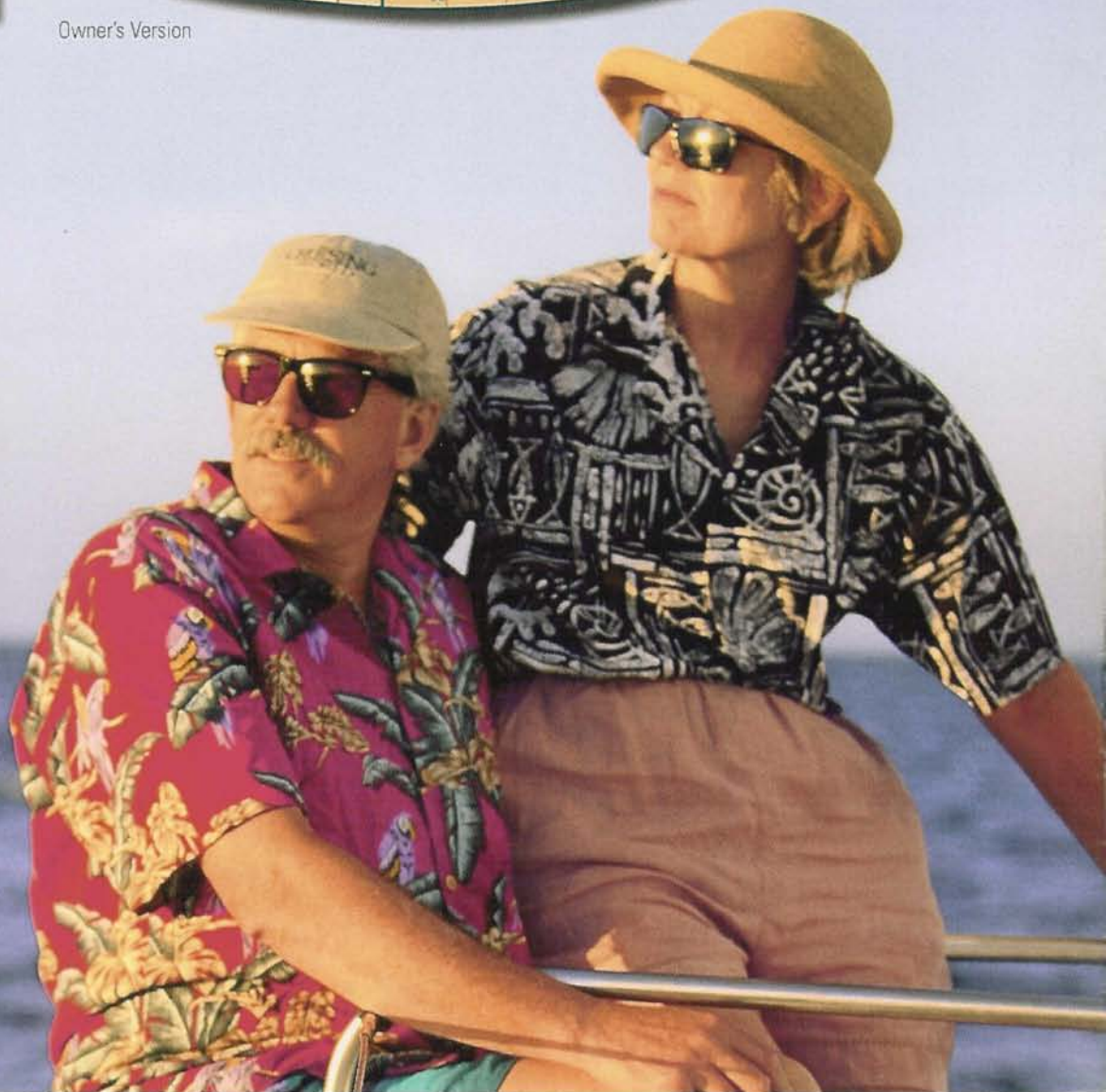
*All measurements are approximate.



Tri-Cabin Option



Owner's Version



Discover the Hunter Difference

Safety ▶ Appointments ▶ Innovations



1 Finely Finished Teak Furniture and Bulkheads

The new Hunter line features a varnished finish on beautifully detailed teak interiors. You will see curved radiuses, matched grains and a new higher level of fit and finish that is usually found only on custom boats.

2 Upgraded Interior Hardware and Fixtures

All interior hardware has undergone extensive testing and evaluation for strength, compatibility and longevity. All cabinetry and door hardware has been upgraded. You'll feel the difference!

3 Upgraded Exterior Hardware

All exterior hardware has been upgraded to include the biggest and best names in the business. You'll find names you can trust such as Lewmar®, Spinlock®, Harken®, ProFurl®, Whitlock® and Schaffer® aboard the new Hunter line.

4 Genuine Corian® Countertops

Genuine Corian® countertops are utilized throughout the entire Hunter keelboat line. This durable, yet beautiful material will hold its serviceability and luster for years to come.

5 Heavy Duty Rubrails

A new high-density vinyl rubrail is now being wrapped 360 degrees around the boats for added protection. A standard stainless steel insert also enhances the protection as well as the beauty.

6 Hunter Kevlar® Technology

Hunter adds the extra strength, but not the weight where you need it most. From the stem to the keel sump, Hunter has added a Kevlar® laminate to give you added protection against collisions. This is the most likely area for damage or penetration and Hunter provides an extra level of security.

7 Stainless Steel Arches

When Hunter first introduced the arch a few years ago, the skeptics were all against it. Today, many of those are now offering arches of their own. There is no question – the arch is a real asset. By placing the traveler up top, it keeps the cockpit clear and safe. As an attachment point for a bimini, it makes a clean installation. The arch is also perfect for stereo speakers and cockpit lights.

8 B&R Rigs

Again, another Hunter innovation that has now been time-proven to be one of the strongest and easiest to sail rigs ever designed. By incorporating sweptback spreaders and a pre-bend in the mast, the need for a backstay has been eliminated. This allows for a fuller roach main that provides more power in an easy to tame mainsail. With the big main, the jib can be smaller and easier to handle as well. Power without perspiration!

9 Antimonious Lead Keels

At Hunter Marine only real hardened lead keels are attached with stainless steel keelbolts. This is obviously more expensive than iron keels and mild steel bolts, but when it comes to performance, safety and maintenance, it's the only way to go.

10 Through-Bolted Hull to Deck Joints

Superb strength and integrity are achieved with a through-bolted hull to deck joint. The outward turned flanges of the deck and hull are first shaped for an exact fit. Then, 3M 5200 sealant is evenly spread onto the joint prior to the lowering of the deck. The joint is then clamped together and through-bolted around the entire deck. An extra shot of epoxy is also laid down at the chainplates. Now, that's strength!

11 Extensive Dealer Network

No matter where in the world you decide to purchase and cruise your Hunter sailboat, our extensive dealer network is trained to be responsive to your needs. An exclusive dealer intranet is in place to keep us in constant communication with them. Whether you need a small part sent or a large question answered, we are always online. As we continue to expand both our product line and distribution channels, you can be sure we will be there for you.

12 Modular Interior Construction

By building the interior outside the boat, Hunter can reduce labor costs and increase quality because of excellent accessibility. The interior is then bonded into the hull to make a true unibody structure.

13 MaxGuard™ and Microban® Gelcoats

Hunter decks are built with MaxGuard gelcoat. This eliminates any yellowing and reduces crazing and fading. Heads and showers are laminated with Microban, a special antibacterial gelcoat to protect you and your family. They cost us a bit more, but it's worth it!

14 Upscale Entertainment Systems

Hunter now offers flat screen TVs and Bose® audio systems. Some competitors believe "roughing it is all right", but at Hunter we believe your comfort is more important. Enjoy the best in video and audio — you deserve it!



CORIAN®
SOLID SURFACES

HKT
HUNTER KEVLAR TECHNOLOGY

Microban
MULTI-PURPOSE PROTECTION

MAXGUARD® LE

SHARP

BOSE

STANDARDS AND OPTIONS

Hunter Cruise PAC®

While everyone else was complaining about the high cost of marine hardware and accessories, Hunter was doing something about it. The Hunter Cruise Pac® was developed to make all the accessories and hardware you need standard equipment. We buy top-quality gear in very large quantities. The result? Equally large savings. The Hunter Cruise Pac® isn't just sails, winches, and running rigging – it's things like galley appliances, anchors, fire extinguishers, running lights, life jackets – even a copy of US Sailing's *Basic Cruising Manual*. We invite you to compare the Standard Equipment list below with that of any other manufacturer. You'll discover that Hunter is making the difference for you with more – and better gear. For less.

RIGGING

Anodized B&R Double Spreader
Fractional Rig – Selden®
Boom Vang
Dual Single Line Reefs Led Aft
Full Roach Main w/Flaking System
Furling System w/110% Furling Jib
Harken® Adjustable Mainsheet Traveler
Inboard Adjustable Jib Tracks w/Cars
Internal Halyards Led to Cockpit
Mast Steps
Sail Cover
(2) Sets Line Stoppers
Stainless Mast Struts
(2) Two-Speed Self-Tailing
Rigging Winches
(2) Two-Speed Self-Tailing Jib
Sheet Winches
(2) Winch Handles
Windex® Wind Indicator

DECK/HULL

Balanced Spade Rudder
w/Composite Shaft
Bow, Midship and Aft Mooring Cleats
Bronze Seacocks on Thru-Hulls
Under Waterline
Cabin Windshield w/Cover
Continuous 360-Degree Rubrail
w/Stainless Steel Insert
Cored Hull Sides
(2) Dorade-Type Vents
Double Life Lines w/Two Gates
Dual Offset Anchor Rollers
External Bulb-Wing Lead Keel
(7) Fixed Hull Ports
Hot & Cold Transom Shower
Large Anchor Well for Rode and Chain
Large Storage Lockers in Transom
LPG Tank Storage for Two 10 lb. Bottles
(9) Opening Deck Hatches w/Screens
(7) Opening Ports w/Screens
Stainless Cabin Handrail
Stainless Steel Arch w/Mainsheet
Stainless Steel Bow and Stern Pulpits
Stern Rail Seats
Swim Platform w/Stainless
Telescoping Ladder
Two-Tone Molded-In Non-Skid Deck

COCKPIT

(2) Coaming Line Storage Wells
(3) Cockpit Lockers
Companionway Handrails
Hinging Helmsman Seat
Integrated Steering Console, Including
Pedestal Guard, Large Table Leaves,
Lighted Compass, Wheel Brake,
Single-Lever Engine Control, Drink
Holders and Courtesy Light
Manual Bilge Pump
Wraparound Coamings

FORWARD CABIN

Bedding Package
Hanging Locker
Holding Tank w/Macerator
Private Forward Cabin
Sealed Teak and Holly Sole
Vanity w/Corian® Countertop

MAIN SALON

Convertible High-Gloss Dinette Table
w/Hinging Leaf
Custom Curtains
Handrails
6'6" Headroom
Hinging Occasional Table for Port Settee
Interior Plush Fiber Blend 6"
Comfort Back Cushions
Large Cedar-Lined Hanging Locker
Large Salon Ports
Navigation Station w/Book Rack and
Space for Electronics
Sealed Teak and Holly Sole
Storage Lockers on Hull Sides

AFT CABIN (OWNER'S VERSION)

Aft Stateroom w/Queen Inner
Spring Mattress
Bedding Package w/Fitted Sheets
Built-in Lounging Chair
Large Cedar-Lined Hanging Lockers
Large Shelves and Dresser Drawers
(6) Opening Ports/Opening Hatches
Sealed Teak and Holly Sole
Wet Locker

AFT HEAD

Full Head w/Stall Shower
Holding Tank w/Macerator
Shower Sump Pump
Vanity w/Corian® Countertop

GALLEY

Built-In Waste Bin
Double Stainless Sinks
Genuine Corian® Countertops
Hot/Cold Pressure Water System
LPG 3 Burner, Gimbale Stove w/Oven
Microwave
Overhead Handrail
(6) Plates, Bowls & Mugs
w/Storage Location
Storage Cabinets and Drawers
Top Loading Icebox w/Dual
Compartments

ELECTRICAL

Battery Charger – 30 Amp
Built-In Solar Panel on Sea Hood
Cabin Reading Lights
Dockside Power w/Cord
Electric Automatic Bilge Pump
Gauges – Fuel, Water, & Holding Tanks
Running Lights w/Steaming, Deck
and Masthead/Anchor Lights
12 Volt Battery Switch

ELECTRONICS

AM/FM Stereo/CD Player w/4 Speakers
Raymarine® Digital Depthsounder
w/Alarm
Raymarine® Digital Knotmeter w/Log
VHF Radio w/Stainless Antenna

CAPACITIES

30 Gallon Fuel Tank (110L)
35 Gallon Waste Tank (130L)
75 Gallon Water Tank (280L)

GENERAL SAFETY GROUP

Danforth-Type Anchor and Rode
Emergency Tiller
■ (2) Fire Extinguishers
■ Fog Bell
■ Hand-Held Flares
■ (6) Life Jackets
U.S. Sailing's *Basic Cruising Manual*
■ – U.S. only

OPTIONAL EQUIPMENT

Air Conditioning System
Aluminum Boom Vang
Bimini Top – Sunbrella®
Cockpit Cushions – White Sunsure®
Cruising Spinnaker Gear
Deep Keel
Diesel Generator
Electric Anchor Windlass
Electric Self-Tailing Halyard Winch
In-Mast Furling System
Inner Forestay
Inner-Spring Mattress (Aft Cabin)
Inverter
Leather Interior Cushions
Raymarine® Autopilots
Raymarine® GPS
Raymarine® Wind Machine
Refrigerator/Freezer
Spinnaker Winches
Tri-Cabin Version
VHF Remote at Helm
ENGINE
2 Blade Propeller
Freshwater-Cooled Diesel – 40 HP Standard
Hinging Fiberglass Cover for Easy Access



HUNTER®
MARINE CORPORATION
AN EMPLOYEE OWNERSHIP COMPANY
DISCOVER THE DIFFERENCE

Route 441 • Post Office Box 1030 • Alachua, Florida USA 32615
Phone (386) 462-3077 • FAX (386) 462-4077 • NATIONAL CUSTOMER HOTLINE U.S.: 1-800-771-5556
www.huntermarine.com • e-mail: sales@huntermarine.com • customerservice@huntermarine.com

Hunter Marine reserves the right to modify or change, without notice, any materials, specifications, equipment and/or accessories. All measurements are approximate. Standard equipment may vary for products sold outside the United States.



Marine Industry Certified Manufacturer



Certification Available



Certified by National Marine Manufacturers' Association