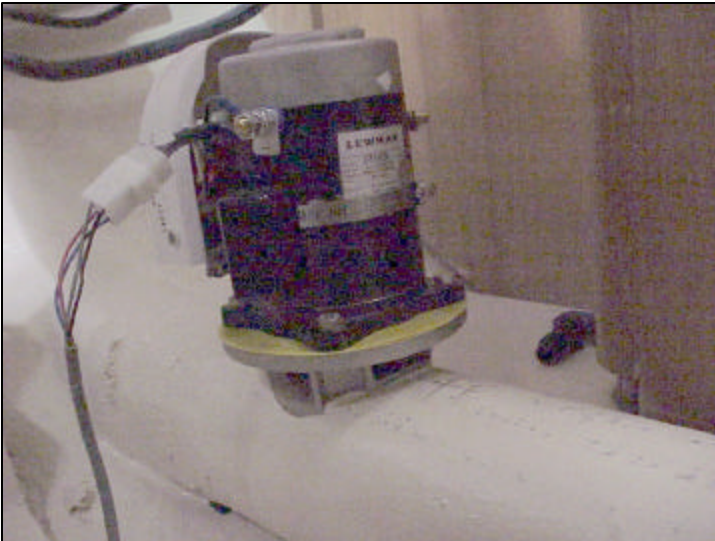


41 BOW THRUSTER Page 1 of 3

1. Remove the port v-berth bunk unit from the boat by taking out the #10 x 1-1/4" screws from bunk top then remove the bunk top & set aside. Cut the bonded support board from the hull then remove the screws securing the bunk to the floor. Once all the screws have been removed lift the unit up and stand it on its end out of the way (in the aft-port corner of the v-berth).
2. Cut the starboard cabinet floor ring (the strip of finished floor attached to the bottom of the cabinet) and remove, this will allow sub-floor to be removed.
3. Remove screws from sub-floor and lift sub-floors off of stringer then place out of the way.
4. Measure forward from main bulkhead 67-1/4", this will be the center of the bow thruster tube. Mark a line athwartship (port to starboard) with a straight edge.
5. Mark a line athwartship 5" forward & 5" aft of the previously marked line. The forward line should be even with the vanity aft bulkhead. Cut out the stringers along these two lines & save the cutout parts so they can be used latter.
6. Mark a spot on the hull, both port & starboard side, 2-1/2" down from the top of the stringers and 67-1/4" forward of the main bulkhead. Drill a 6" holes thru the hull at these spots so the drill is pointed directly at the center of the hole on the other side of the boat, this will make semi-elliptical hole about 11" tall & 6" wide.
7. Insert the bow thruster tube thru the two holes, make sure there is room (2-1/4") between the tube and hull to run the existing hoses from the forward shower and vanity under the tube. If there is not enough room, remove the tube and grind the tops of the holes in the hull to raise the tube to the correct height. Place the tube back into position & recheck the distance between the hull & the tube.
8. Once tube is in & level, glass the tube into place on the inside of the boat on both the starboard & port side, make this a thick bond as it will have a 1" radius cut into it from the outside. On the outside of the boat cut the tube flush with the outside of the hull then put a 1" radius along the entire edge of the cutout on both the port & starboard side. Gelcoat the hull & buff.
9. Refit the previous cut out stringers pieces to fit around the bow thruster tube and allow the hoses to fit under the tube. Glass these pieces back into the boat.
10. Route waste & sump hoses thru the stringer & under the tube.
11. Sand & gelcoat tube, stringer, and locker as needed.
12. Install bow thruster onto tube so it will be inside the port v-berth bunk (this will put the bow thruster around 7" port of the boat centerline). Route wires starboard to the inside of the vanity cabinet then aft to the nav station in the pipe as the windlass wires.
13. Install 250 amp fuse in floor step below seat then install the on/off switch in the inboard face of the nav seat. Connect the bow thruster cables to the switch as per the schematics.
14. Connect cables at the bow thruster unit & route control cable aft thru knot & depth sound thru pipe to cockpit then up to steering pedestal..
15. Install new sub-floor to cut out areas.
16. The bunk will need a moon shape cut in the forward end of the inboard face so it will fit over the bow thruster tube.

41 BOW THRUSTER Page 2 of 3



41 BOW THRUSTER

