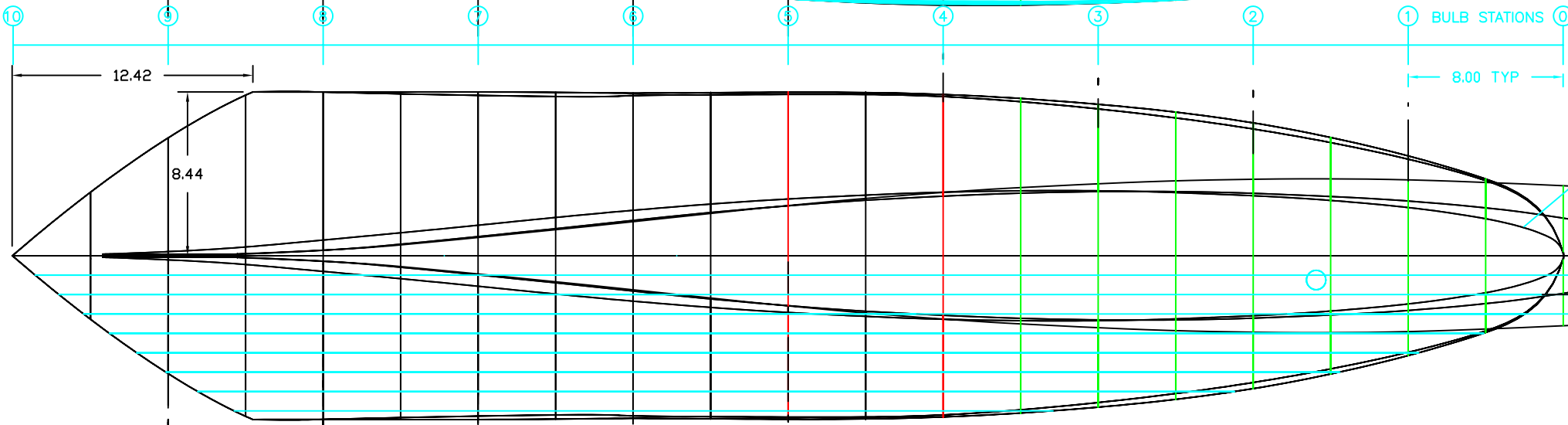
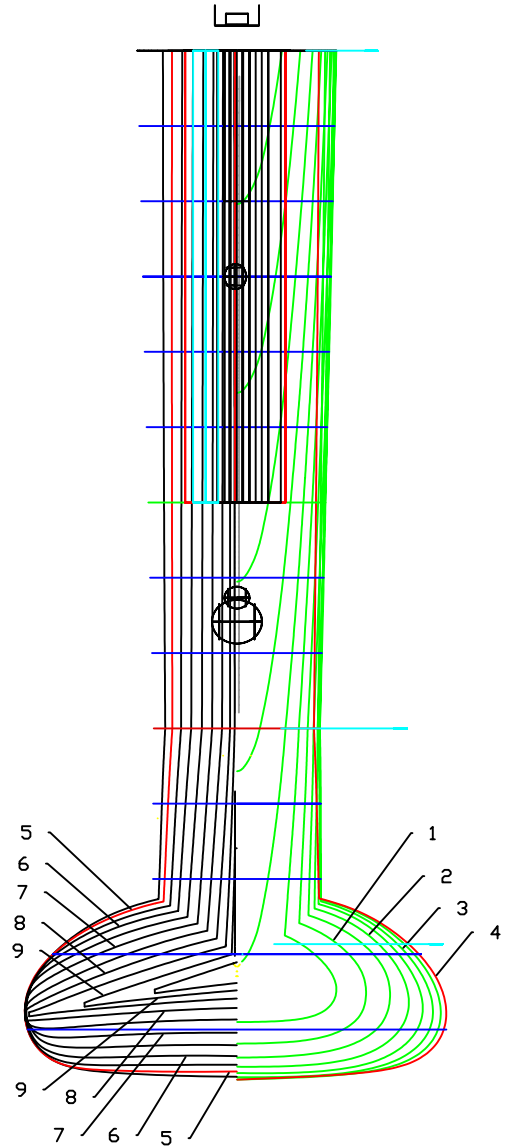
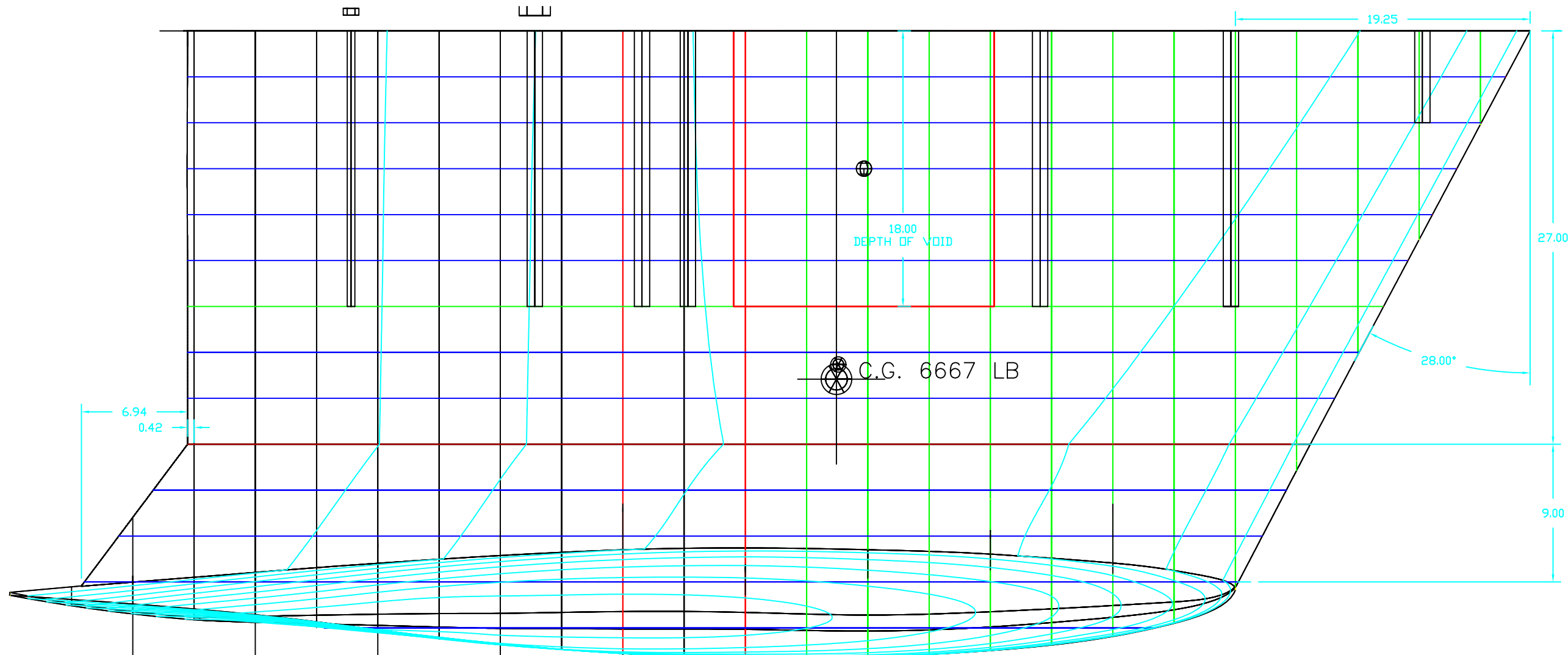


- NOTES:
1. KEEL TOP TO MATCH P42 & H430 KEEL TOP
 2. BOLTS ARE ALL 1"-8 UNC 316 ST. STL EXCEPT AFT BOLT WHICH IS 1/2" - 13
 3. BOLT AND VOID LOCATIONS SAME FOR SHOAL AND DEEP KEELS
 4. HEIGHT OF ALL BOLTS TO EXTEND 4 1/2" ABOVE TOP OF LEAD EXCEPT THAT AFT BOLT TO EXTEND 12" ABOVE TOP OF LEAD



C	SHORTEN AFT KEEL BOLT 2" 3/16/98	CB
B	LENGTHEN AFT KEEL BOLT 10/2/97	CB
A	ADD AFT KEEL BOLT	8/20/97 CB

PROPRIETARY INFORMATION: This document discloses information for which HUNTER MARINE CORP. has proprietary rights.

HUNTER

DRAWING TITLE: H410 DEEP KEEL	
DRAWING NO. 41010003	REVISION NO. A
SHEET 1 OF 1	HUNTER PART NO. N/A
DRAWN BY: CB	CHECK'D BY:
DATE: 5/15/97	DATE:
PLOT SCALE: FULL	PAPER SIZE: B
SCALE: 1 1/2" = 1'-0"	

5	
4	
3	
2	
1	
0	
REV. NO.	

- DRAWING SUBMITALS -