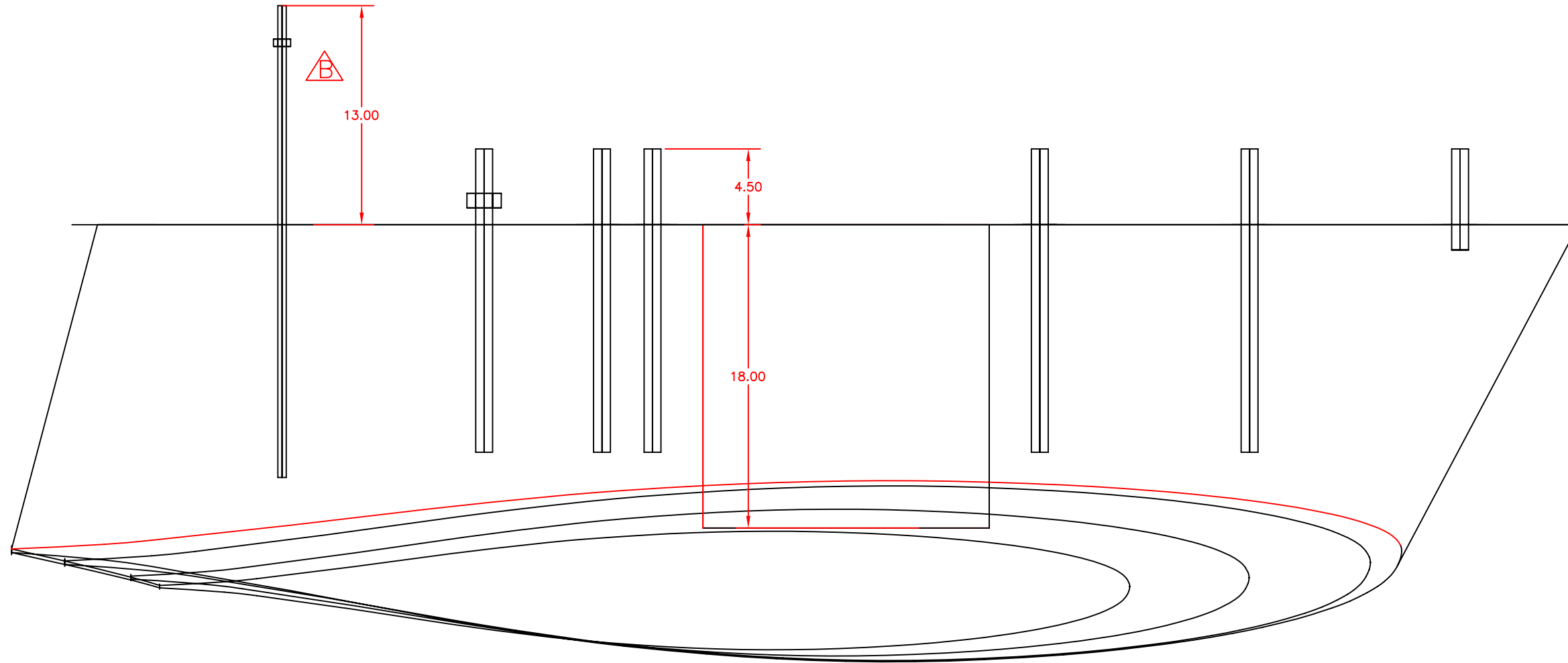
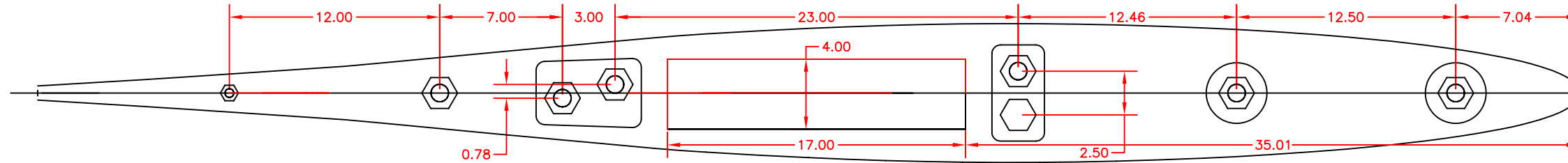


NOTES:

1. KEEL IS SAME AS P42 & H430 KEEL EXCEPT FOR VOID
2. BOLTS ARE ALL 1"-8 UNC 316 ST. STL EXCEPT AFT BOLT WHICH IS 1/2" - 13
3. BOLT AND VOID LOCATIONS SAME FOR SHOAL AND DEEP KEELS



B CHANGED AFT BOLT LENGTH FROM 12 TO 13" 7/11/00 KJC			
A SHORTENED AFT KEEL BOLT 2" 3/16/98 CB			
SYMBOL	REVISIONS	DATE	NAME

PROPRIETARY INFORMATION: This document discloses information for which HUNTER MARINE CORP. has proprietary rights.

HUNTER

5					
4					
3					
2					
1					
0					
REV. NO.	DRAWING TITLE:	DRAWING NO.	REVISION NO.	DATE:	NAME:
	H410 SHOAL KEEL	410-10013	A		
		SHEET 1 OF 1	HUNTER PART NO. N/A		
		DRAWN BY: CB	CHECK'D BY:		
		DATE: 10/2/97	DATE: ___/___/___		
		PLOT SCALE: FULL	PAPER SIZE: B	SCALE: 1 1/2" = 1'-0"	