

AFT H2O CMPTS. (SEE PAGE 57F)

- 7A=...AFT H2O TANK (51 GAL. 193 L.)
- 7B=...AFT H2O FILL (DECK FITTING)
- 7C=...AFT H2O VENT (DECK FITTING)
- 7D=...C-PIT SHOWER
- 7E=...SHORE H2O INLET

AFT HEAD (SEE PAGE 57D)

- 2A=...AFT VAN. FAUCET
- 2B=...AFT VAN. SEACOCK
- 2C=...AFT VAN. SHOWER
- 2D=...AFT SHOWER DRAIN

PORT H2O TANK (SEE PAGE 57G)

- 4A=...PORT H2O TANK (47 GAL. 178 L.)
- 4B=...PORT H2O FILL (DECK FITTING)
- 4C=...PORT H2O VENT (VENTED STANCHION)

FWD. HEAD (SEE PAGE 57C)

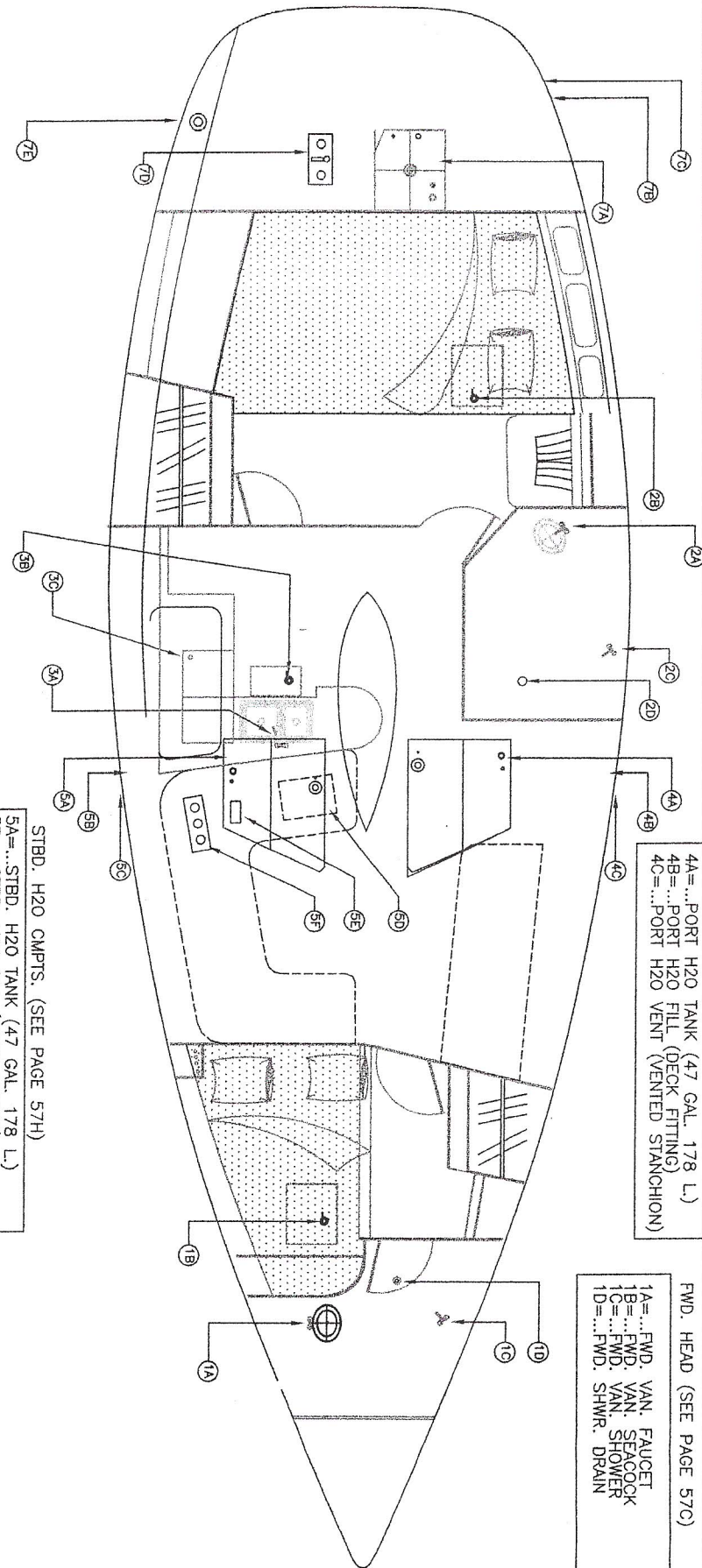
- 1A=...FWD. VAN. FAUCET
- 1B=...FWD. VAN. SEACOCK
- 1C=...FWD. VAN. SHOWER
- 1D=...FWD. SHWR. DRAIN

GALLEY (SEE PAGE 57E)

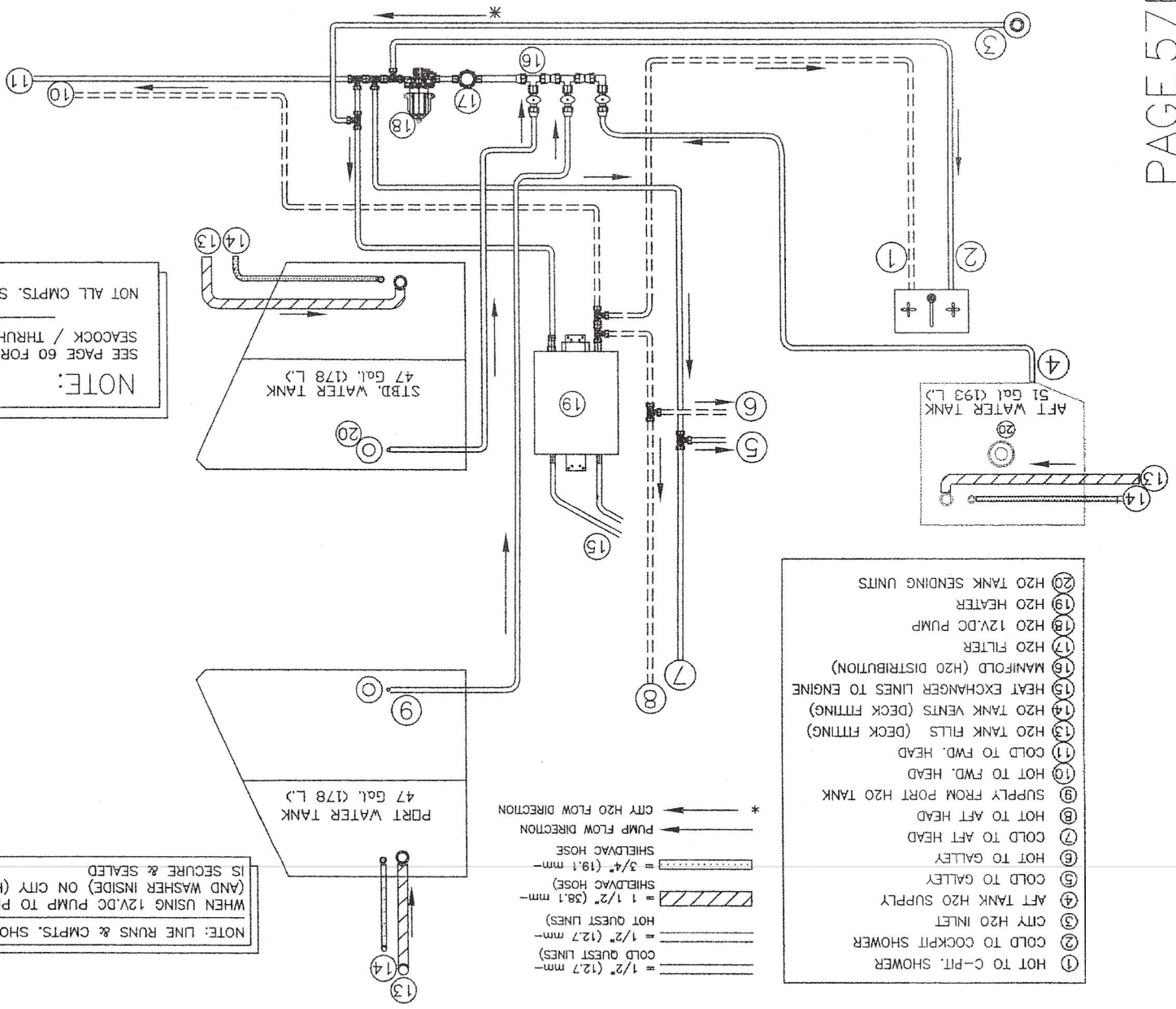
- 3A=...GALLEY FAUCET
- 3B=...GALLEY DRAIN SEACOCK
- 3C=...ICE BOX DRAIN

STBD. H2O CMPTS. (SEE PAGE 57H)

- 5A=...STBD. H2O TANK (47 GAL. 178 L.)
- 5B=...STBD. H2O FILL (DECK FITTING)
- 5C=...STBD. H2O VENT (VENTED STANCHION)
- 5D=...H2O HEATER (6 GAL. 23 L.)
- 5E=...H2O 12 VDC PUMP
- 5F=...H2O MANIFOLD



HUNTER  
 H410 FRESH WATER/DRAIN GEN. LAYOUT  
 PLUMBING (8057A)  
 NONE  
 7/15/97

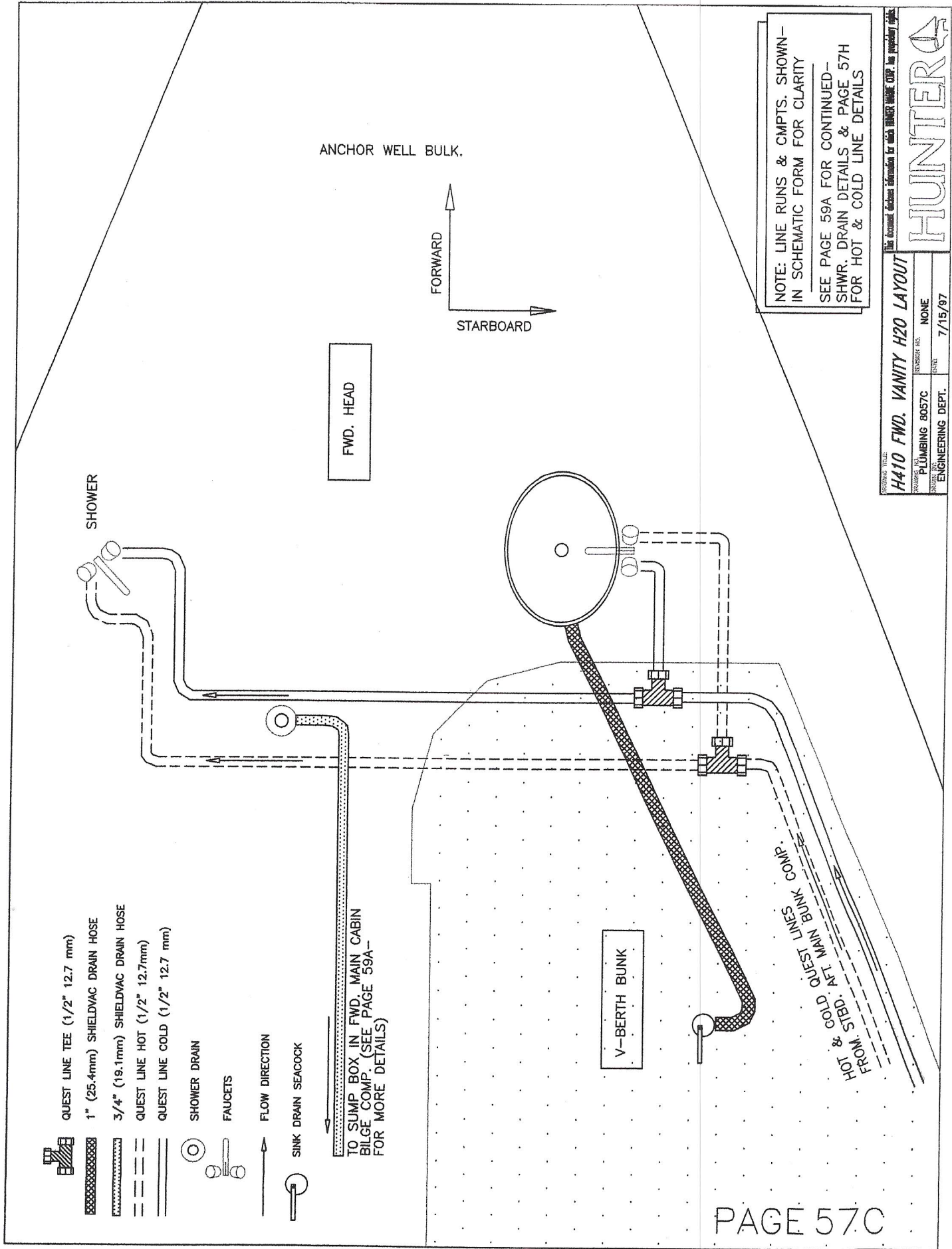


- ① HOT TO C-PT. SHOWER
- ② COLD TO COCKPIT SHOWER
- ③ CITY H2O INLET
- ④ AFT TANK H2O SUPPLY
- ⑤ COLD TO GALLEY
- ⑥ HOT TO GALLEY
- ⑦ COLD TO AFT HEAD
- ⑧ HOT TO AFT HEAD
- ⑨ SUPPLY FROM PORT H2O TANK
- ⑩ HOT TO FWD. HEAD
- ⑪ COLD TO FWD. HEAD
- ⑬ H2O TANK FILLS (DECK FITTING)
- ⑭ H2O TANK VENTS (DECK FITTING)
- ⑮ HEAT EXCHANGER LINES TO ENGINE
- ⑯ MANIFOLD (H2O DISTRIBUTION)
- ⑰ H2O FILTER
- ⑱ H2O 12V.DC PUMP
- ⑲ H2O HEATER
- ⑳ H2O TANK SENDING UNITS

- 1/2" (12.7 mm) COLD QUEST LINES
- 1/2" (12.7 mm) HOT QUEST LINES
- 1 1/2" (38.1 mm) SHIELDVAC HOSE
- 3/4" (19.1 mm) SHIELDVAC HOSE
- ← PUMP FLOW DIRECTION
- ← \* CITY H2O FLOW DIRECTION

NOTE: LINE RUNS & CMPTS. SHOWN IN SCHEMATIC FORM FOR CLARITY  
 WHEN USING 12V.DC PUMP TO PRESSURE SYSTEM BE SURE CAP  
 (AND WASHER INSIDE) ON CITY (HOSE) HOOKUP ON STERN OF BOAT  
 IS SECURE & SEALED

NOTE:  
 SEE PAGE 60 FOR SPECIFIC—  
 SEACOCK / THRUHULL / DECK FITTING LOCATIONS  
 NOT ALL CMPTS. SHOWN APPLY TO ALL MODELS



- QUEST LINE TEE (1/2" 12.7 mm)
- 1" (25.4mm) SHIELDVAC DRAIN HOSE
- 3/4" (19.1mm) SHIELDVAC DRAIN HOSE
- QUEST LINE HOT (1/2" 12.7mm)
- QUEST LINE COLD (1/2" 12.7 mm)
- SHOWER DRAIN
- FAUCETS
- FLOW DIRECTION
- SINK DRAIN SEACOCK

TO SUMP BOX IN FWD. MAIN CABIN  
BILGE COMP. (SEE PAGE 59A--  
FOR MORE DETAILS)

FROM STD. AT MAIN BUNK COMP.  
HOT & COLD QUEST LINES

NOTE: LINE RUNS & CMPTS. SHOWN-  
IN SCHEMATIC FORM FOR CLARITY  
SEE PAGE 59A FOR CONTINUED-  
SHWR. DRAIN DETAILS & PAGE 57H  
FOR HOT & COLD LINE DETAILS

PROJECT TITLE: **H410 FWD. VANITY H2O LAYOUT**

DRAWING NO.: **PLUMBING 8057C**

REVISION NO.: **NONE**

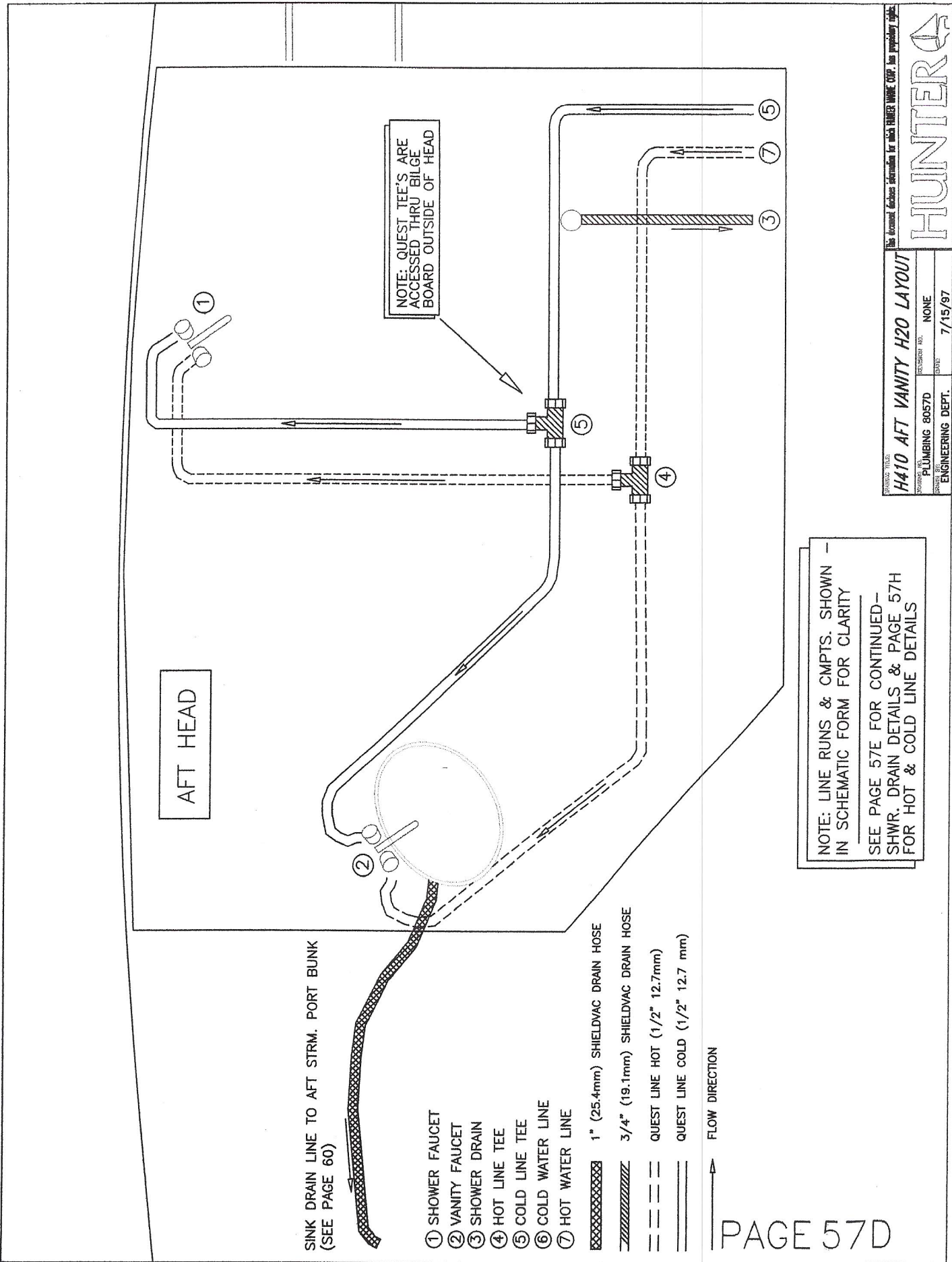
SCALE: **AS SHOWN**

DATE: **7/15/97**

ENGINEERING DEPT.

**HUNTER**





AFT HEAD

NOTE: QUEST TEE'S ARE  
ACCESSED THRU BILGE  
BOARD OUTSIDE OF HEAD

SINK DRAIN LINE TO AFT STRM. PORT BUNK  
(SEE PAGE 60)

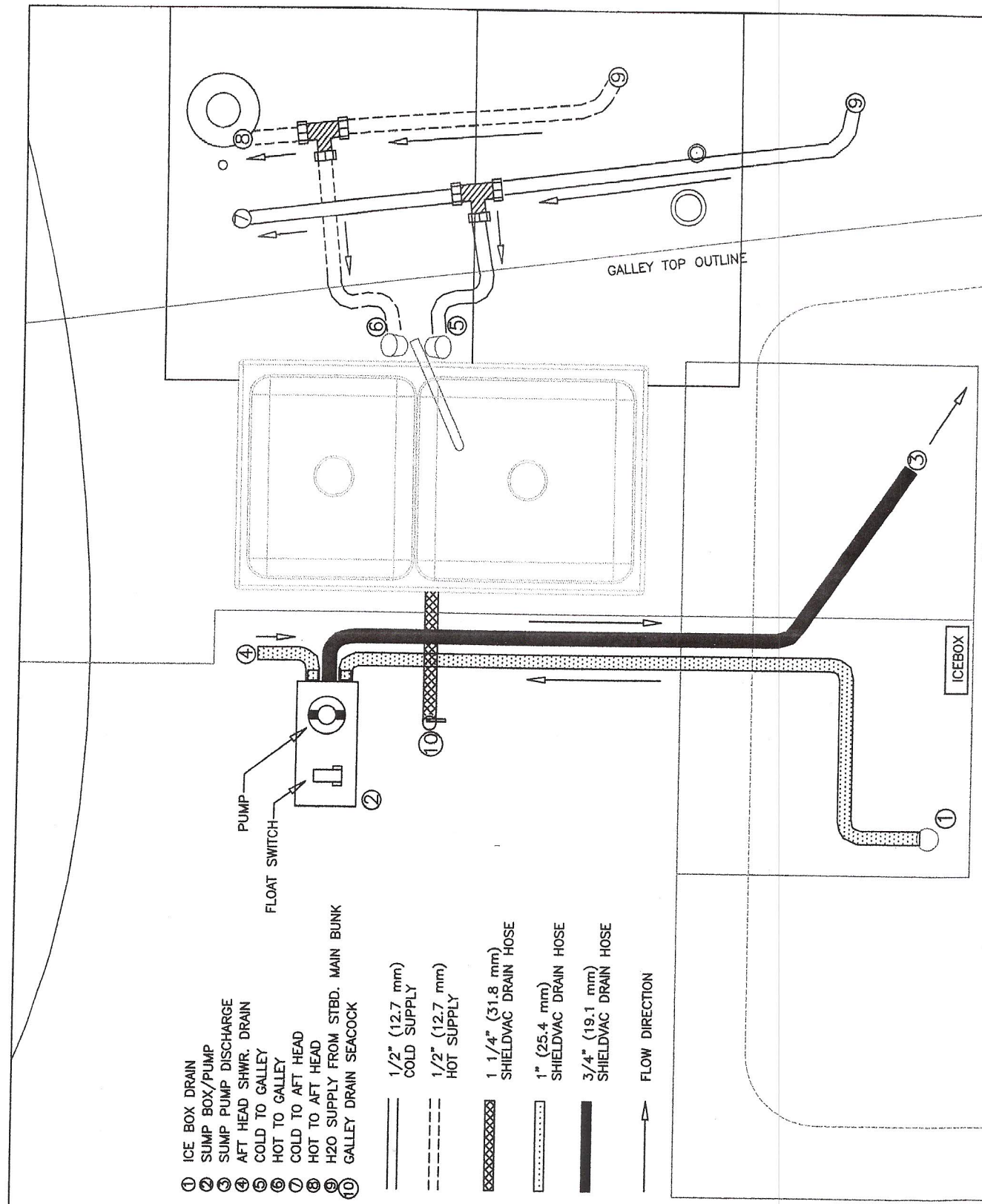
- ① SHOWER FAUCET
- ② VANITY FAUCET
- ③ SHOWER DRAIN
- ④ HOT LINE TEE
- ⑤ COLD LINE TEE
- ⑥ COLD WATER LINE
- ⑦ HOT WATER LINE

- 1" (25.4mm) SHIELDVAC DRAIN HOSE
- 3/4" (19.1mm) SHIELDVAC DRAIN HOSE
- QUEST LINE HOT (1/2" 12.7mm)
- QUEST LINE COLD (1/2" 12.7 mm)

FLOW DIRECTION

NOTE: LINE RUNS & CMPTS. SHOWN -  
IN SCHEMATIC FORM FOR CLARITY  
SEE PAGE 57E FOR CONTINUED -  
SHWR. DRAIN DETAILS & PAGE 57H  
FOR HOT & COLD LINE DETAILS

THIS DOCUMENT PROVIDES INFORMATION FOR WHICH HUNTER MARINE CORP. ASSUMES NO LIABILITY.  
**HUNTER**  
**H410 AFT VANITY H2O LAYOUT**  
 DRAWING NO. PLUMBING 8057D  
 REVISION NO. NONE  
 DATE 7/15/97  
 ENGINEERING DEPT.



- ① ICE BOX DRAIN
- ② SUMP BOX/PUMP
- ③ SUMP PUMP DISCHARGE
- ④ AFT HEAD SHWR. DRAIN
- ⑤ COLD TO GALLEY
- ⑥ HOT TO GALLEY
- ⑦ COLD TO AFT HEAD
- ⑧ HOT TO AFT HEAD
- ⑨ H2O SUPPLY FROM STBD. MAIN BUNK
- ⑩ GALLEY DRAIN SEACOCK



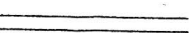
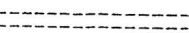
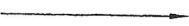
- 1/2" (12.7 mm) COLD SUPPLY
- 1/2" (12.7 mm) HOT SUPPLY
- 1 1/4" (31.8 mm) SHIELDVAC DRAIN HOSE
- 1" (25.4 mm) SHIELDVAC DRAIN HOSE
- 3/4" (19.1 mm) SHIELDVAC DRAIN HOSE

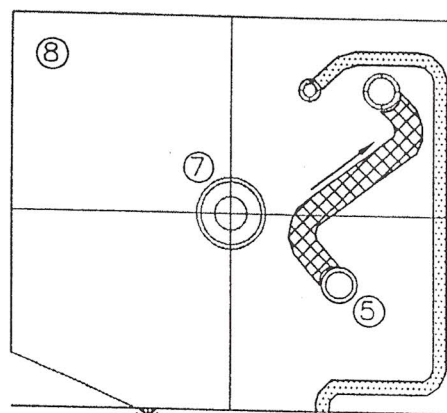
↑ FLOW DIRECTION

NOTE: LINE RUNS & CMPTS. SHOWN IN SCHEMATIC FORM FOR CLARITY  
SEE PAGES 57D & 57H FOR CONTINUED LINE RUNS & DETAILS

SYSTEMS TITLE: **H410 GALLEY H2O LAYOUT**  
 DRAWING NO: 4108057E  
 PROJECT: SURFACE/INC. DEPT.  
 CUSTOMER NO. NONE  
 DATE: 7/18/77  
 HUNTERA

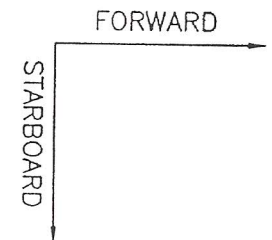
- ① HOT TO C-PIT SHOWER
- ② CITY H2O SUPPLY LINE
- ②A FRESH WATER HOSE CONNECTION
- ③ COLD TO C-PIT SHOWER
- ④ AFT TANK H2O SUPPLY LINE
- ⑤ AFT TANK FILL (DECK FITTING ON -  
AFT C-PIT COAMING)
- ⑥ AFT TANK VENT (DECK FITTING)
- ⑦ AFT TANK SENDING UNIT
- ⑧ AFT H2O TANK (51 GAL. 193 L.)
- ⑨ COCKPIT SHOWER

-  3/4" (19.1 mm) SHIELDVAC HOSE
-  1 1/2" (38.1mm) FUEL FILL HOSE
-  1/2" (12.7 mm) COLD SUPPLY
-  1/2" (12.7 mm) HOT SUPPLY
-  FLOW DIRECTION




NOTE: LINE RUNS & CMPTS. SHOWN -  
IN SCHEMATIC FORM FOR CLARITY  
SEE PAGE 57H FOR CONTINUED-  
LINE RUNS & DETAILS

AFT STRM. AFT BULK.



PAGE 57F



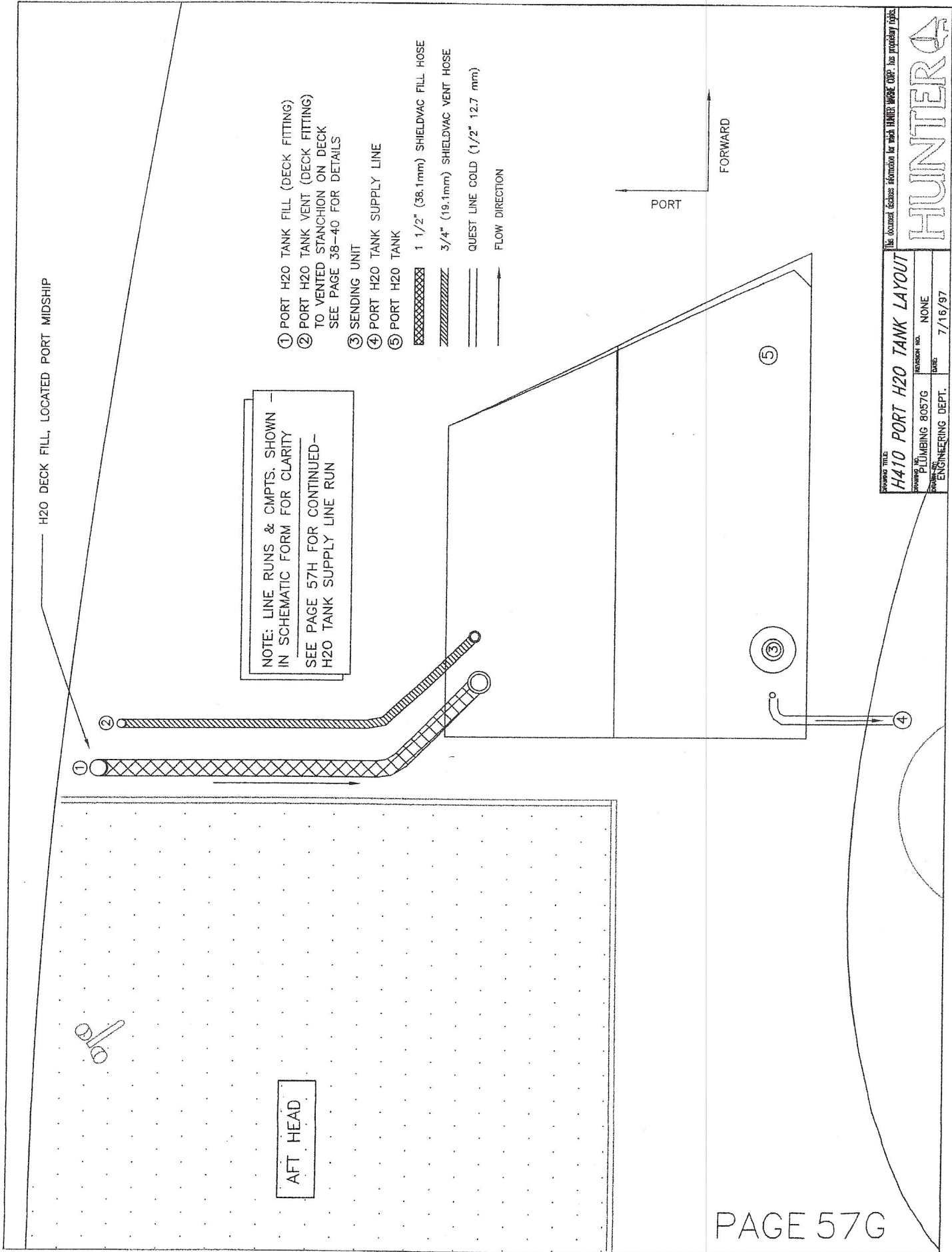
|   |                      |   |  |
|---|----------------------|---|--|
| DRAWING TITLE<br><b>H410 AFT H2O CMPTS LAYOUT</b> |                      | This document contains information for which HUNTER MARINE CORP. has proprietary rights.            |  |
| DESIGNED BY<br>PLUMBING 8057F                     | REVISION NO.<br>NONE | <b>HUNTER</b>  |  |
| DRAWN BY<br>ENGINEERING DEPT.                     | DATE<br>7/16/97      |   |  |

H2O DECK FILL, LOCATED PORT MIDSHIP

NOTE: LINE RUNS & CMPTS. SHOWN  
IN SCHEMATIC FORM FOR CLARITY  
SEE PAGE 57H FOR CONTINUED--  
H2O TANK SUPPLY LINE RUN

- ① PORT H2O TANK FILL (DECK FITTING)
- ② PORT H2O TANK VENT (DECK FITTING)  
TO VENTED STANCHION ON DECK  
SEE PAGE 38-40 FOR DETAILS
- ③ SENDING UNIT
- ④ PORT H2O TANK SUPPLY LINE
- ⑤ PORT H2O TANK

- 1 1/2" (38.1mm) SHIELDVAC FILL HOSE
- 3/4" (19.1mm) SHIELDVAC VENT HOSE
- QUEST LINE COLD (1/2" 12.7 mm)
- FLOW DIRECTION

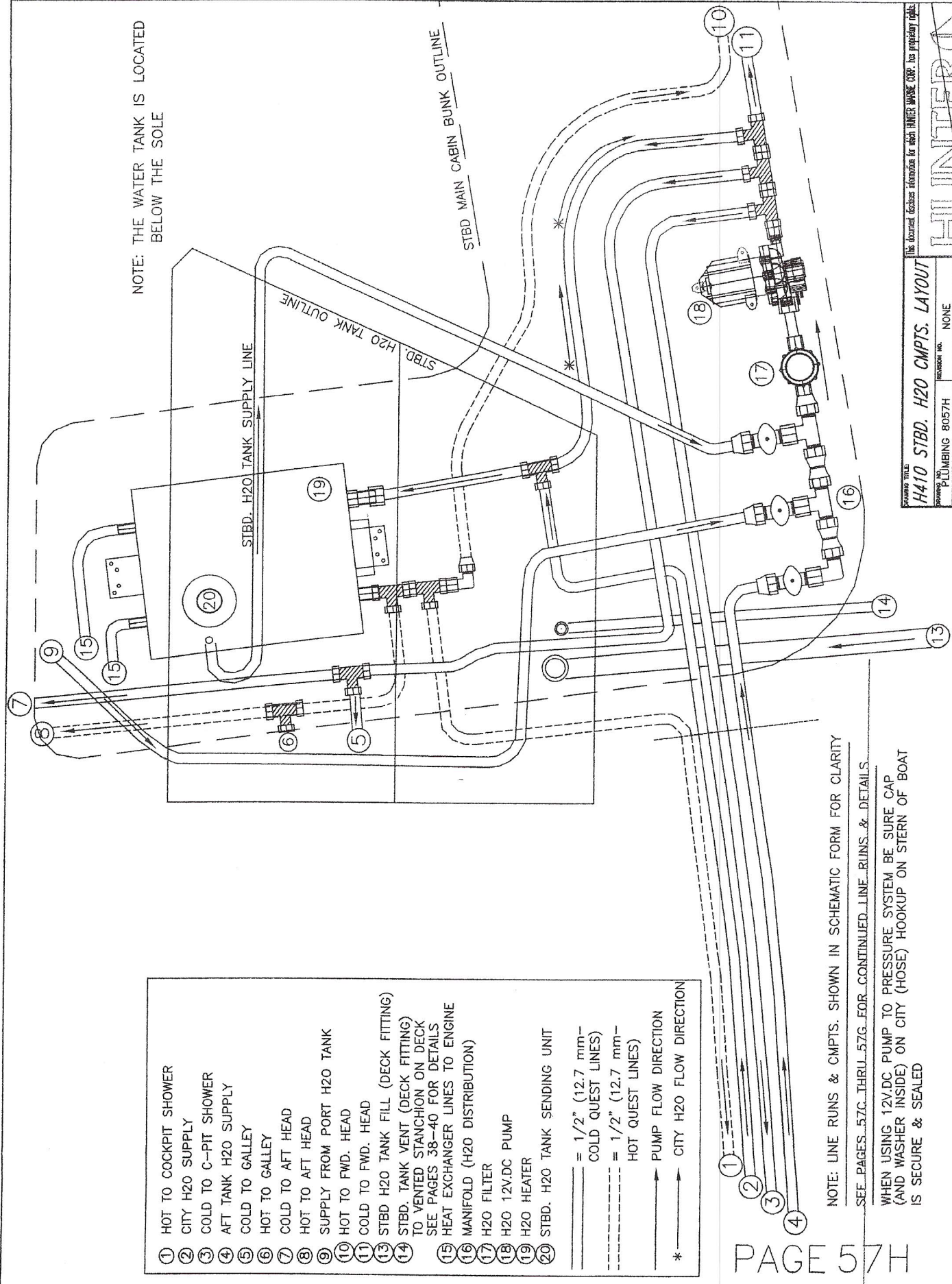


This document contains information for which HUNTER WAVER CORP. has proprietary rights.

|                           |              |
|---------------------------|--------------|
| DRAWING TITLE             |              |
| H410 PORT H2O TANK LAYOUT |              |
| DRAWING NO.               | REVISION NO. |
| PLUMBING 8057G            | NONE         |
| DRAWN BY                  | DATE         |
| ENGINEERING DEPT.         | 7/16/97      |

HUNTER





NOTE: THE WATER TANK IS LOCATED BELOW THE SOLE

- ① HOT TO COCKPIT SHOWER
  - ② CITY H2O SUPPLY
  - ③ COLD TO C-PIT SHOWER
  - ④ AFT TANK H2O SUPPLY
  - ⑤ COLD TO GALLEY
  - ⑥ HOT TO GALLEY
  - ⑦ COLD TO AFT HEAD
  - ⑧ HOT TO AFT HEAD
  - ⑨ SUPPLY FROM PORT H2O TANK
  - ⑩ HOT TO FWD. HEAD
  - ⑪ COLD TO FWD. HEAD
  - ⑫ STBD H2O TANK FILL (DECK FITTING)
  - ⑬ STBD. TANK VENT (DECK FITTING) TO VENTED STANCHION ON DECK SEE PAGES 38-40 FOR DETAILS
  - ⑭ HEAT EXCHANGER LINES TO ENGINE
  - ⑮ MANIFOLD (H2O DISTRIBUTION)
  - ⑯ H2O FILTER
  - ⑰ H2O 12V.DC PUMP
  - ⑱ H2O HEATER
  - ⑳ STBD. H2O TANK SENDING UNIT
- = 1/2" (12.7 mm) COLD QUEST LINES  
 - - - = 1/2" (12.7 mm) HOT QUEST LINES  
 → PUMP FLOW DIRECTION  
 → CITY H2O FLOW DIRECTION  
 \*

NOTE: LINE RUNS & CMPTS. SHOWN IN SCHEMATIC FORM FOR CLARITY  
 SEE PAGES 57C THRU 57G FOR CONTINUED LINE RUNS & DETAILS  
 WHEN USING 12V.DC PUMP TO PRESSURE SYSTEM BE SURE CAP (AND WASHER INSIDE) ON CITY (HOSE) HOOKUP ON STERN OF BOAT IS SECURE & SEALED

PAGE 57H

ISSUED TITLE  
**H410 STBD. H2O CMPTS. LAYOUT**  
DRAWING NO. PLUMBING 8057H  
REASON NO. NONE  
DATE 7/16/97  
DESIGNED BY ENGINEERING DEPT.  
**HUNTER**