

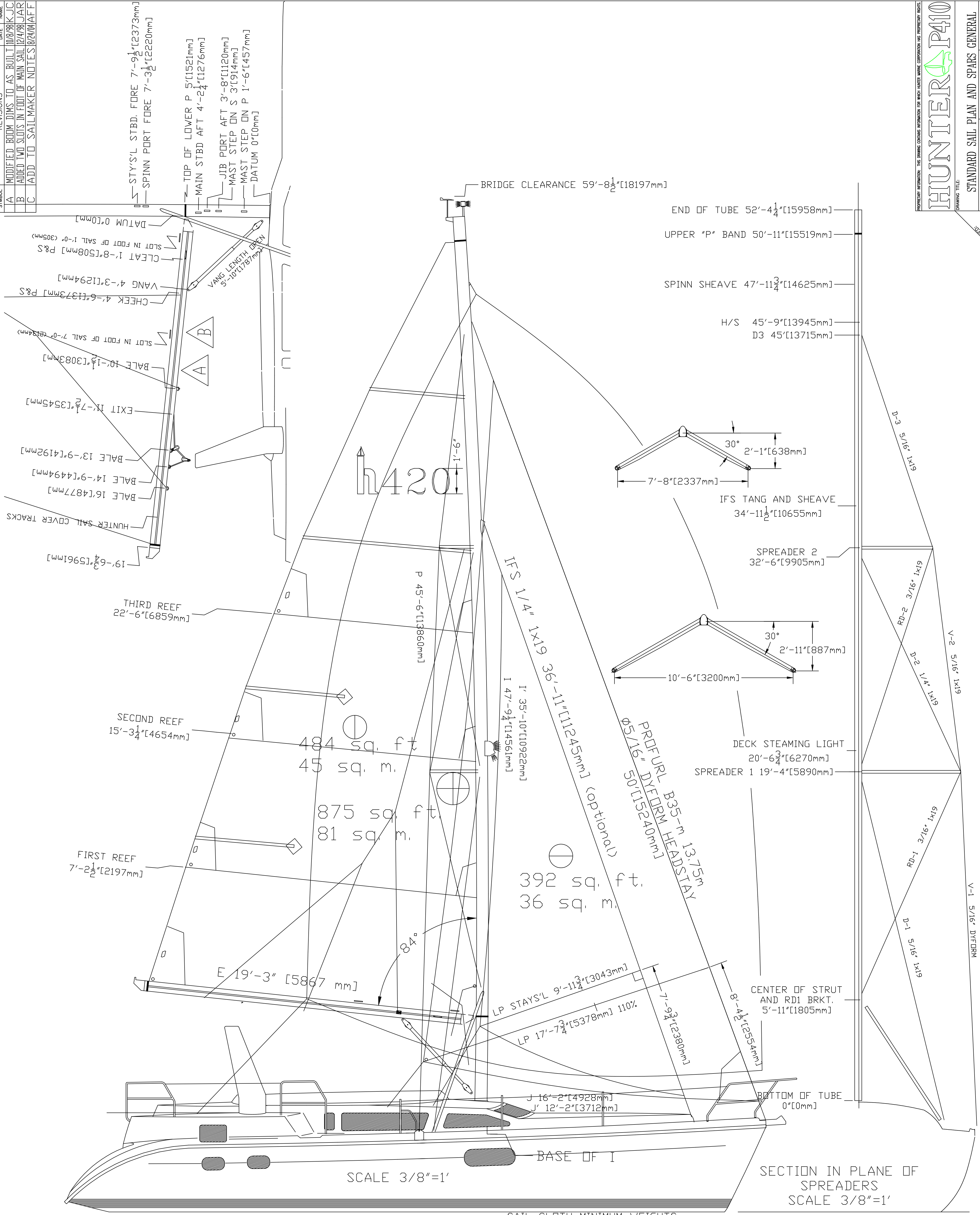
SYMBOL	REVISIONS	DATE	NAME
A	MODIFIED BOOM DIMS TO AS BUILT	10/09/98	KJC
B	ADDED TWO SLOTS IN FOOT OF MAIN SAIL	12/4/98	JAR
C	ADD TO SAILMAKER NOTES	8/24/04	FAF

HUNTER P410

DRAWING TITLE: STANDARD SAIL PLAN AND SPARS GENERAL

DRAWN BY: KJC DATE: 12/16/96 SHEET 1 OF 1

SCALE: 3/8"=1' HUNTER PART NO. N/A DRAWING NO. P41-30001



RM@1° = 1716 ft*lbs
 RMmax = 56000 ft*lbs

MAST SECTION MINIMUM INERTIA
 LONG. 16.25 in^4 675 cm^4
 LAT. 7.50 in^4 312 cm^4

BOOM SECTION MINIMUM INERTIA
 VERT. 30 in^4 1240 cm^4
 LAT. 9.60 in^4 400 cm^4

- MAST MAKERS NOTES:
1. SPREADER TIPS CONFIGURED FOR DISCONTINUOUS RIGGING
 2. MASTHEAD ANCHOR LIGHT 1W2C WIRE TO MASTHEAD
 3. COMBO DECK / STEAMING LIGHT LOCATED AS SHOWN
 4. CONDUIT AND LARGE COAX RUN TO MASTHEAD W/ EXTRA MESSENGER.
 5. SPREADER LOCATIONS AND SHROUD TERMINATION LOCATIONS TO BE IDENTICAL TO h410 STANDARD RIG (SAME STANDING RIGGING).

CHAINPLATE DATA		
ITEM	MIN GRIP	PIN Ø
V1	1/2"	Ø5/8"
D1	3/8"	Ø1/2"
STRUT	3/8"	Ø3/8"
IFS	1/4"	Ø1/2"
HEADSTAY	7/16"	Ø5/8"

SAIL CLOTH MINIMUM WEIGHTS
 MAIN. 9 oz./yd^2
 JIB. 9 oz./yd^2
 STAYSAIL. 9 oz./yd^2

- SAIL MAKERS NOTES:
1. TWO LONG TOP BATTENS, TWO SHORT BOTTOM BATTENS. TOP BATTENS AND HEADBOARD USE BATTSLIDE HARDWARE 2 x 450-10/461 B/S Jr.
 2. MAST BEND IS 9°, MAX AT FIRST SPREADER, STRAIGHT ABOVE I
 3. 6" ALUMINUM HEADBOARD
 4. MAIN LEACH CORD ADJUSTED AT TACK AND CLEWS.
 5. ALUMINUM LEACH CORD CLEATS.
 6. FIRST REEF ON STBD, SECOND REEF ON PORT, THIRD REEF ON STARBOARD. REEF POINTS ARE PRESSED RINGS AT CLEW AND WEBBED RINGS AT TACK. USE SELDEN SPECIFICATIONS FOR OFFSETS.
 7. SPREADER PATCHES ANGLED UP 5°.
 8. SAIL SLIDES TO BE SPECIFIED BY SELDEN.
 9. HUNTER LOGO TO BE 18" TALL
 10. PRESSED RING FOR CUNNINGHAM ON MAIN.
 11. TELL TALES END OF ALL BATTENS.
 12. JIB TO HAVE WEBBED HEAD AND TACK W/ SS RING FOR CLEW.
 13. JIB LEACH AND FOOT CORDS ADJUSTED AT CLEW.
 14. SUNBRELLA UV PROTECTION ON STBD. OF JIB.
 15. LUFF TAPE ON LUFF OF JIB.
 16. JIB HEADSTAY SAG IS 12"
 17. ALL STANDARD MAINS SHALL BE LOOSE FOOTED.

△ C