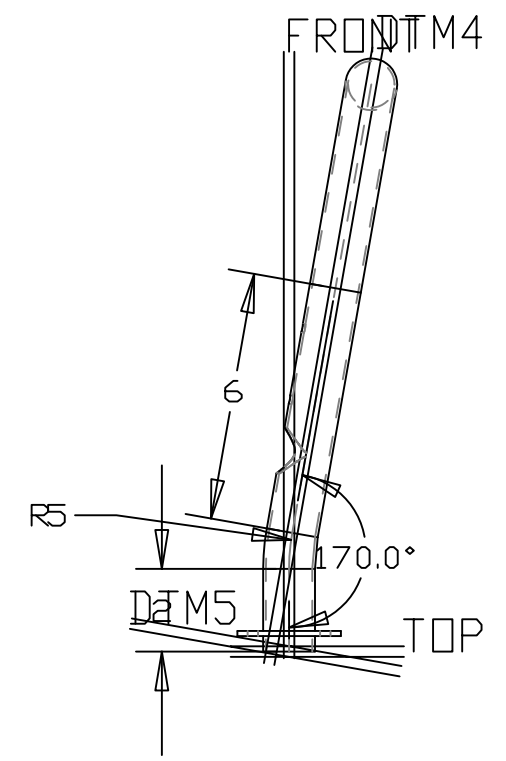
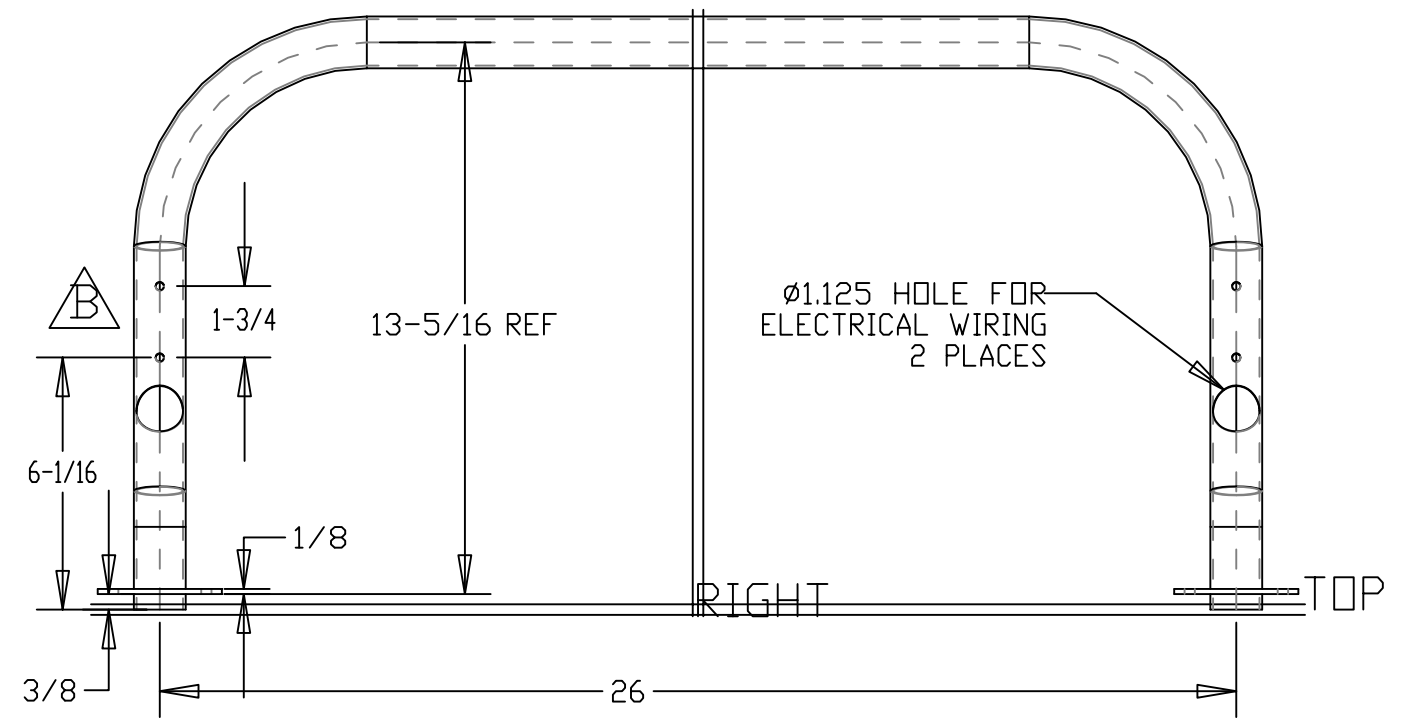
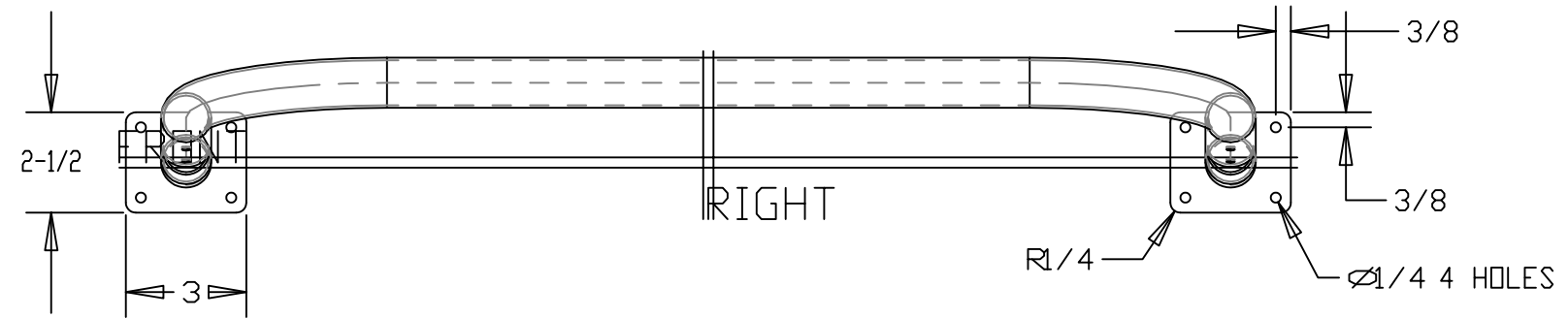
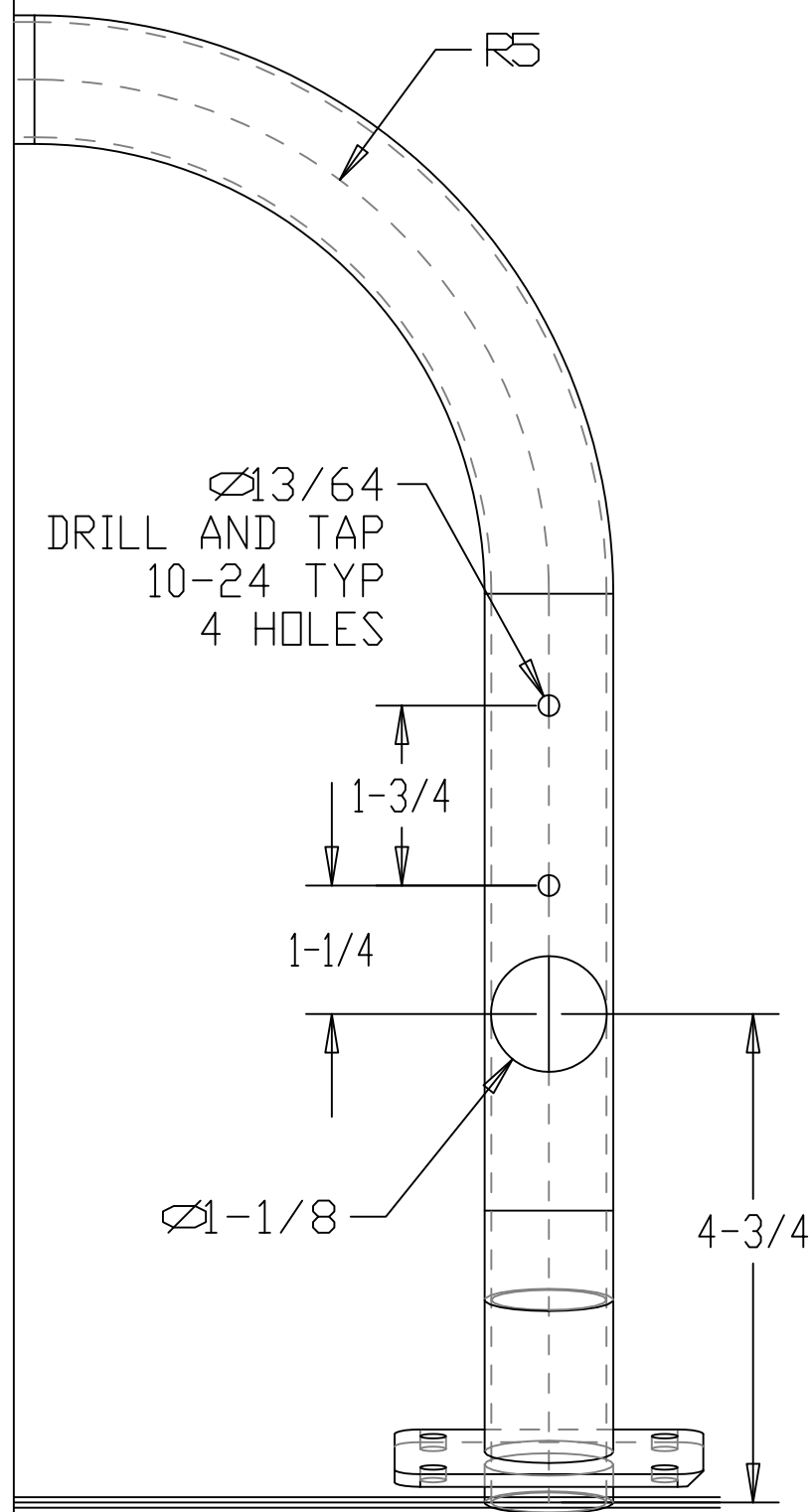



SYMBOL	REVISIONS	DATE	ENG
A	Width increased to 26" from 17.5"	8/14/02	JTM
	4 MOUNTING HOLES (DRILL & TAP) MOVED		
	MOUNTING FLANGES 3"X 2.5" FROM Ø2.5"		
B	added wire chase hole, moved screw holes	3/15/04	MAG



- NAVPOD GRABRAIL
- SCALE: .250
 - MATERIAL: RAIL= 1.25" x .065 SS
MNT PADS= .125 SS
 - ALL DIMENSIONS ARE INCHES AND DEGREES
 - ALL WELDS TO MEET AWS STANDARDS
 - BREAK AND DEBURR ALL EDGES
 - BRIGHT POLISH AFTER FABRICATION
 - QUANTITY: 1 PART PER BOAT
 - PRO/E FILE: 426_NAVPOD_SS_RAIL

PROPRIETARY INFORMATION: THIS DRAWING CONTAINS INFORMATION FOR WHICH HUNTER MARINE CORPORATION HAS PROPRIETARY RIGHTS.



H U N T E R 426

DRAWING TITLE: NAVPOD GRABRAIL

DRAWN BY: JTM DATE: 22-May-02 SHEET 1 OF 1

SCALE: 0.200 HUNTER PART NO. REVISION B DRAW # 42645005

CHECKED: