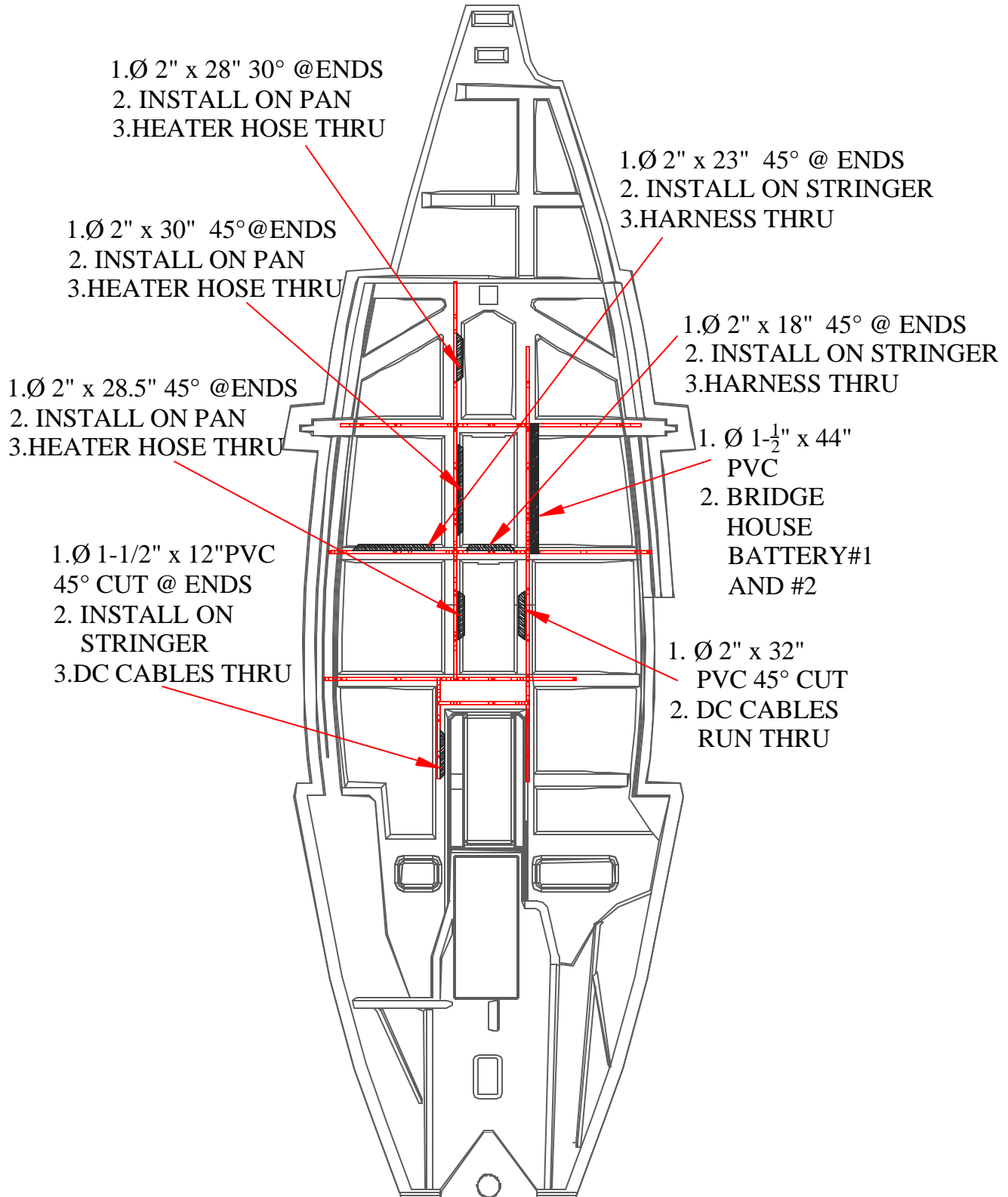
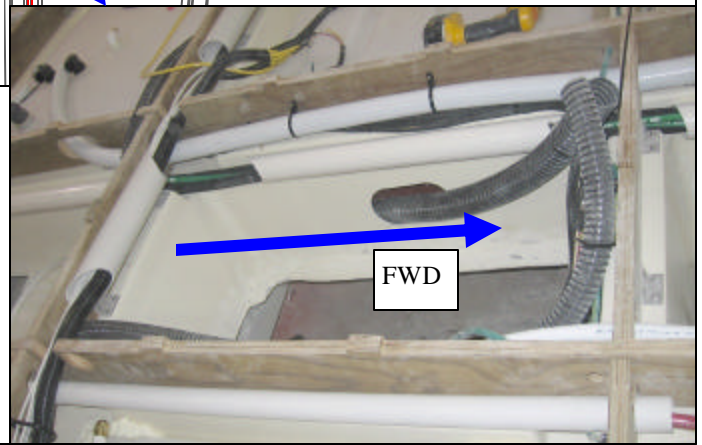
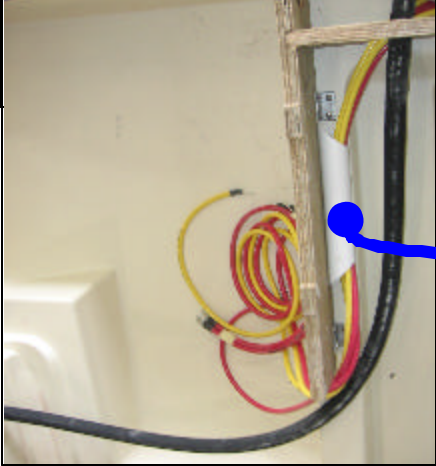
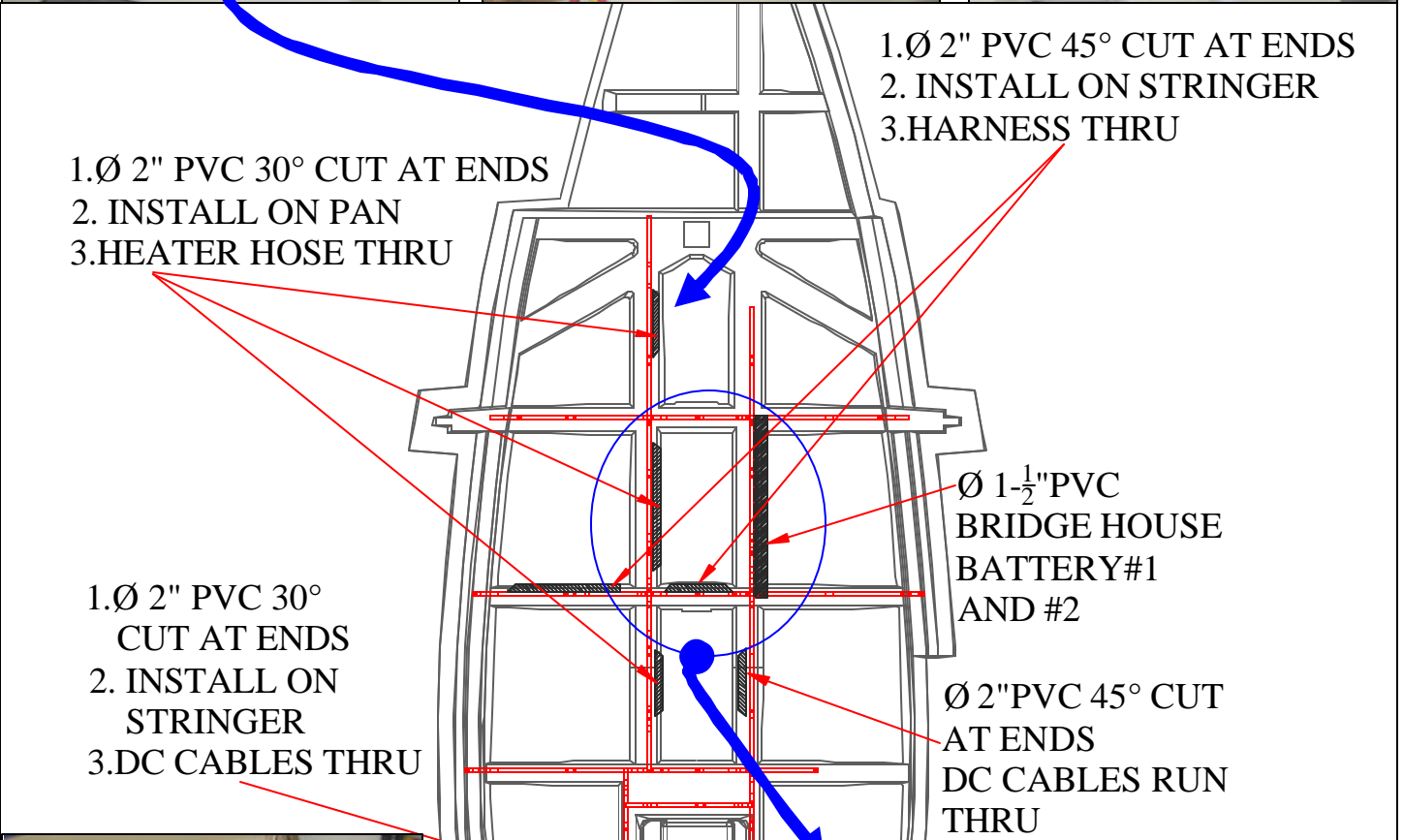


44 Module Room Pan Sub Assembly PVC Installation (01-16-2006) Rev-A

44N PAN SUB ASSEMBLY PVC LOCATION



44 Module Room Pan Sub Assembly PVC Installation



**44 Module Room
Pan Sub Assembly PVC Installation**

44N PAN SUB ASSEMBLY PVC PIPE INFORMATION

No	PVC SIZE	DESCRIPTION OF PARTS	Install Location
1	ø1-½" X 44" X 0°	Bridge Between Hose Battery #1 & #2	Secure to Pan Stringer
2	ø2" x 28" x 20°	Water Heater Hoses Thru	Secure to Pan Stringer
3	ø2" x 30" x 45°	Water Heater Hoses Thru	Secure to Pan Stringer
4	ø2" x 23" x 20°	AC & DC Harness Thru / Lateral (Port)	Secure to Wood Stringer
5	ø2" x 18" x 45°	AC & DC Harness Thru / Lateral (Middle)	Secure to Wood Stringer
6	ø2" x 28.5" x 45°	Water Heater Hoses Thru	Secure to Pan Stringer
7	ø2" x 32" x 20°	DC Cables Go Thru	Secure to Wood Stringer
8	ø2" x 12" x 45°	DC Cables Go Thru	Secure to Wood Stringer