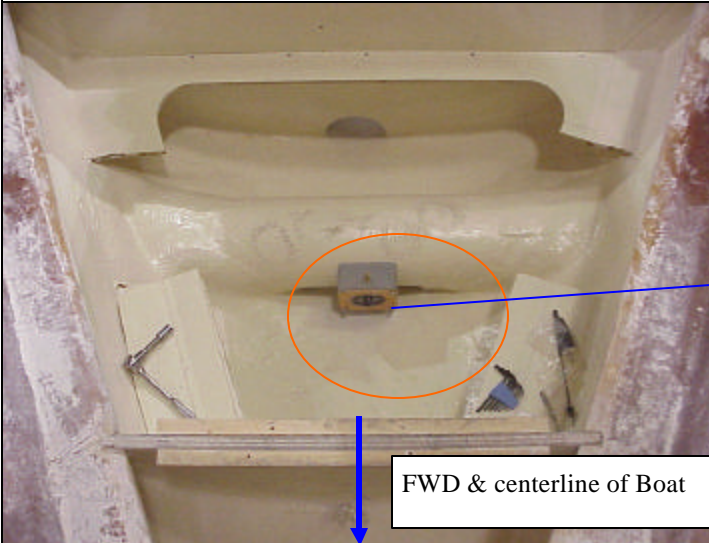
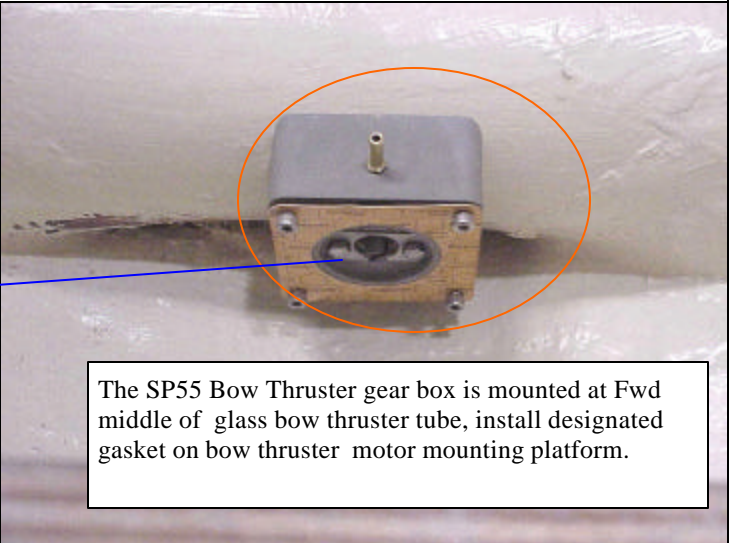


H426 /44 Bow Thruster Option

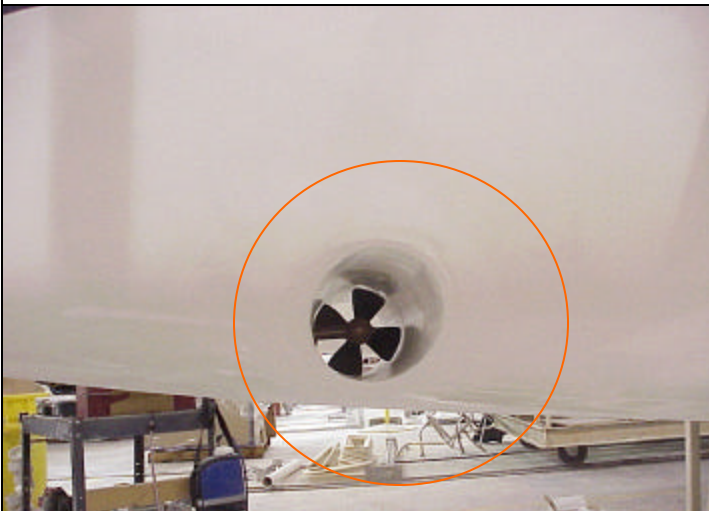


FWD & centerline of Boat

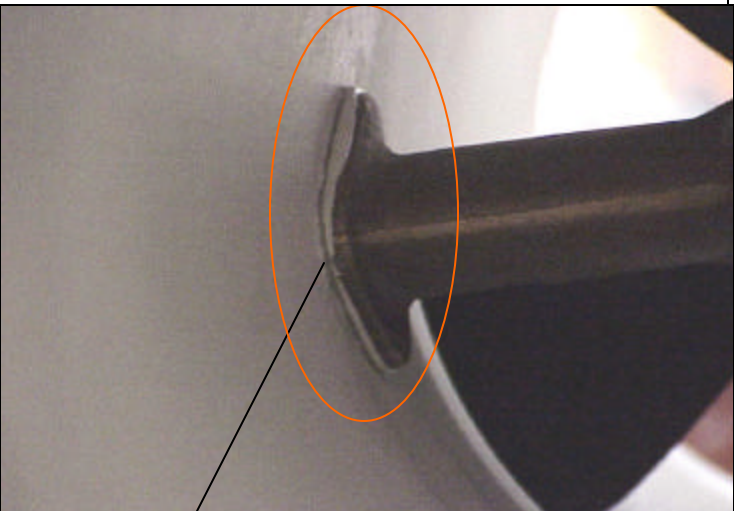


The SP55 Bow Thruster gear box is mounted at Fwd middle of glass bow thruster tube, install designated gasket on bow thruster motor mounting platform.

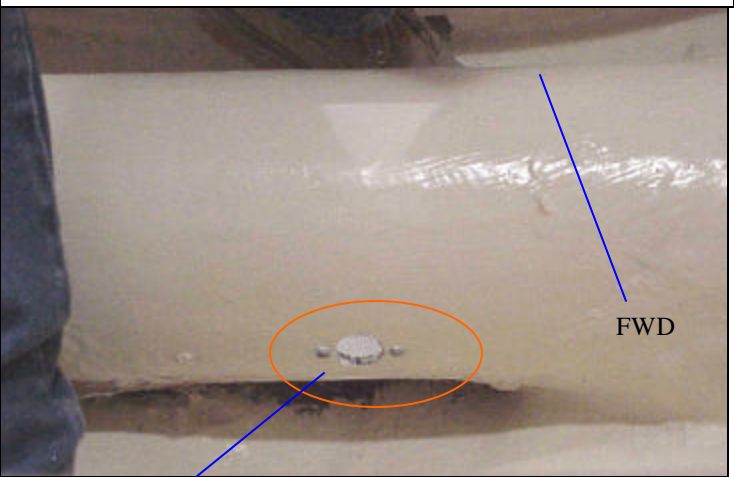
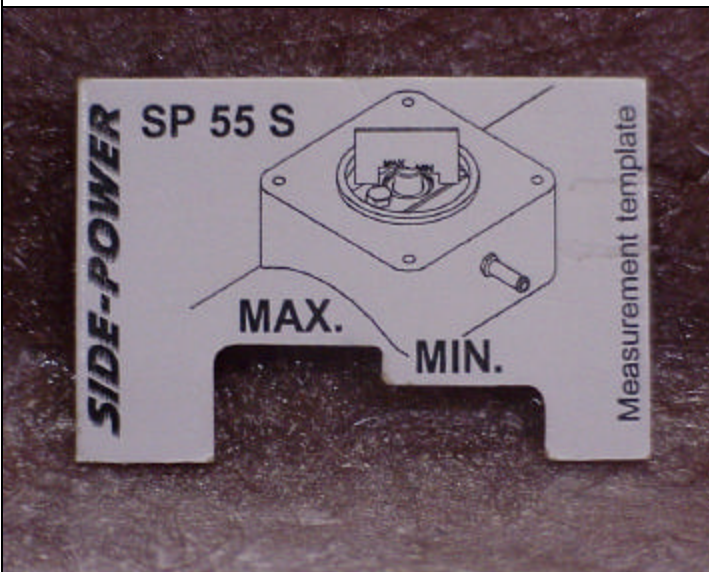
Interior Gel-coat is applied after the bow thruster tube is boned & scuffing. Locate gear box mounting hole after gel-coat is cured.



Bow Thruster duct inlet radius, patching port & starboard side radius to 10~15% of bow thruster tube diameter. ***



Apply qualified marine sealant 5200 to caulk around gear unit mounting hole.



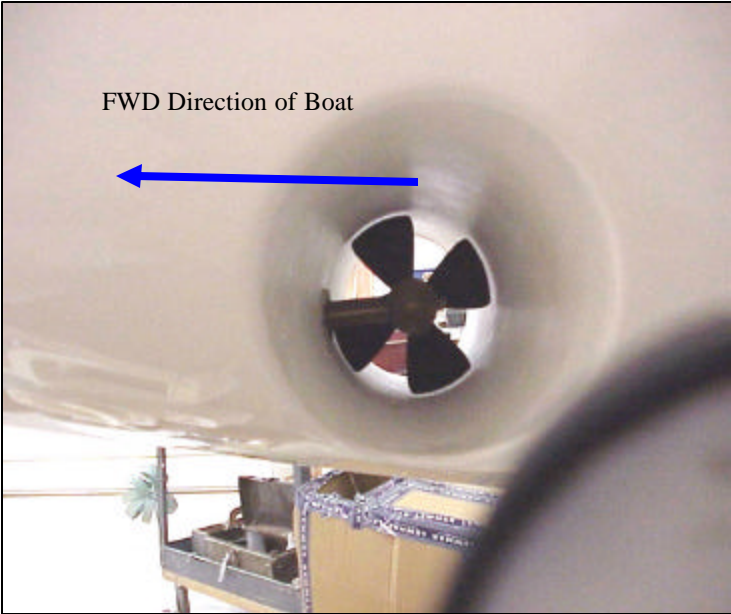
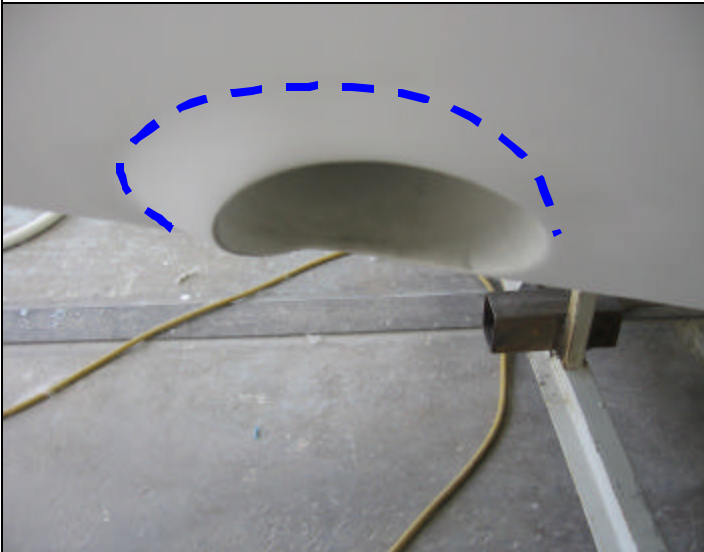
FWD

Follow bow thruster manual instruction to drill designated mounting holes for propeller drive unit.

H426 /44 Bow Thruster Option



The radius of this lip is essential, the radius should be 10-15% of bow thruster tube diameter.



TO START BATTERY SWITCH (COM)

TO HOUSE BATTERY SWITCH (BATT)

TO HOUSE BATTERY SWITCH (COM)

TO ENGINE STARTER

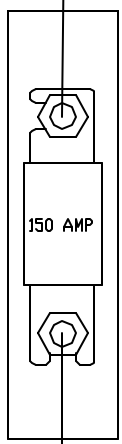
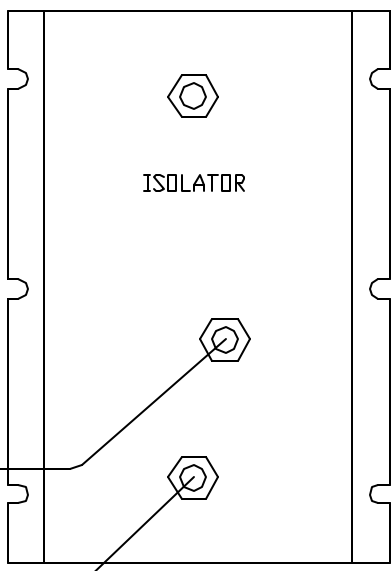
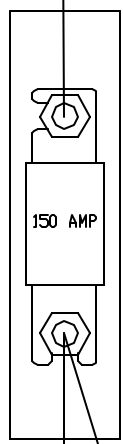
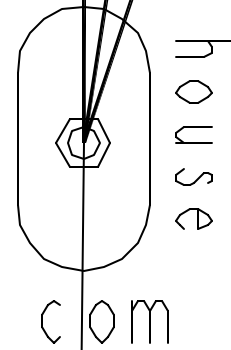
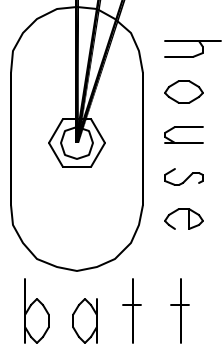
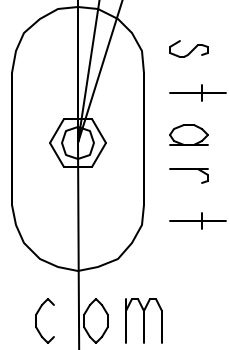
TO GENERATOR STARTER (OPTION)

TO FWD HOUSE BATTERY

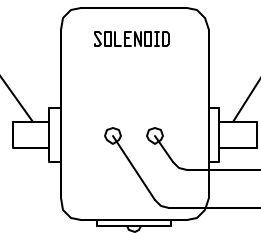
TO AFT HOUSE BATTERY

TO WINDLASS RESET BREAKER (OPTION)

TO INVERTER (OPTION)



TO BOW THRUSTER BATTERY



16ga RED WIRE #141
16ga YELLOW WIRE #189

WIRE LINE LEGEND, UNLESS SPECIED

- = 2ga RED
- = 2/0 RED

416 AND 426

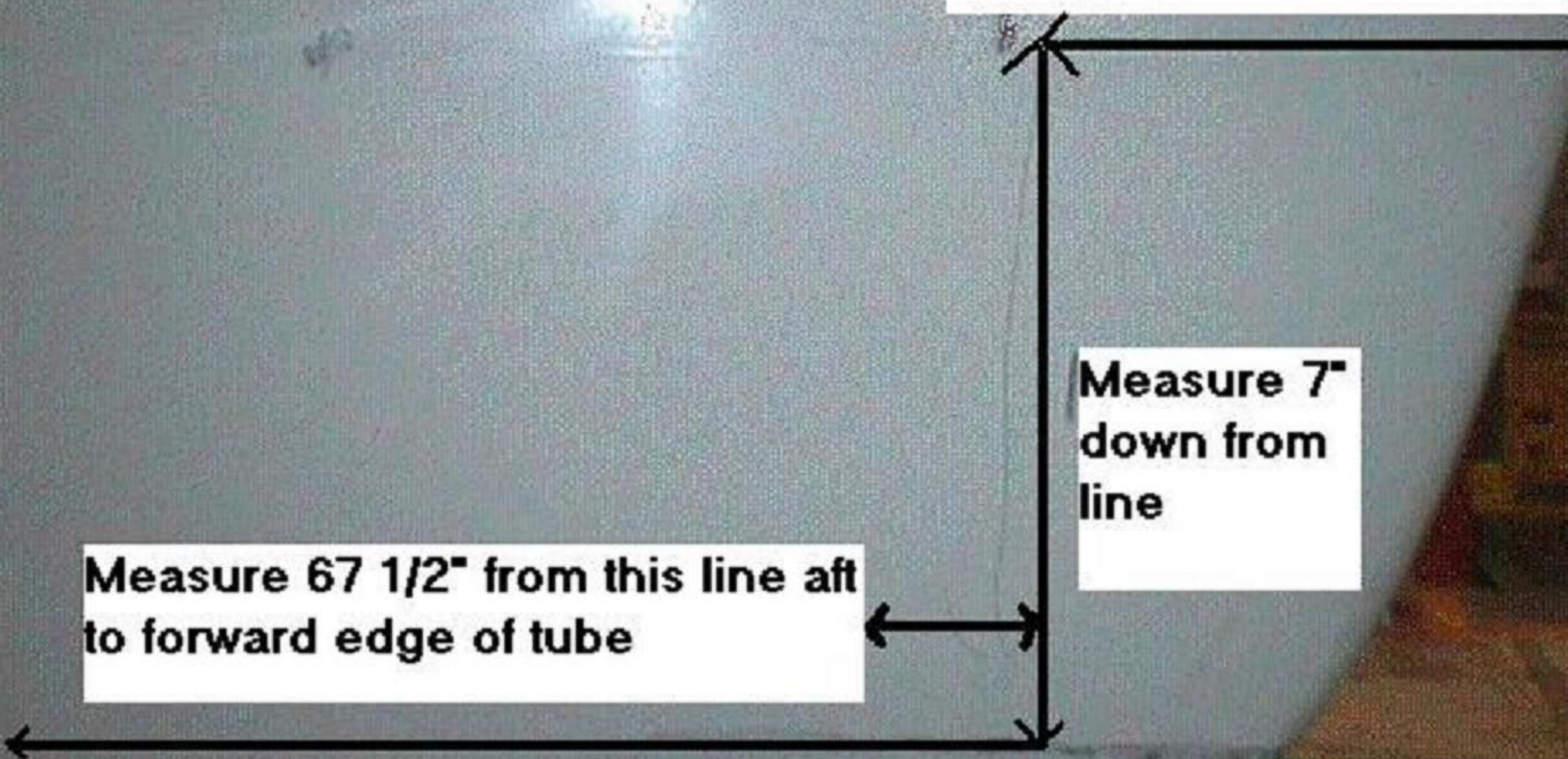
BATTERY CHARGER WITH BOW THRUSTER

**44 Bow thruster
tube measurements**

**Measure 6" from bow aft
on scribe line**

**Measure 7"
down from
line**

**Measure 67 1/2" from this line aft
to forward edge of tube**



Scribe Line

44 Bow thruster tube
measurements

12" From
scribe line to
top of tube

