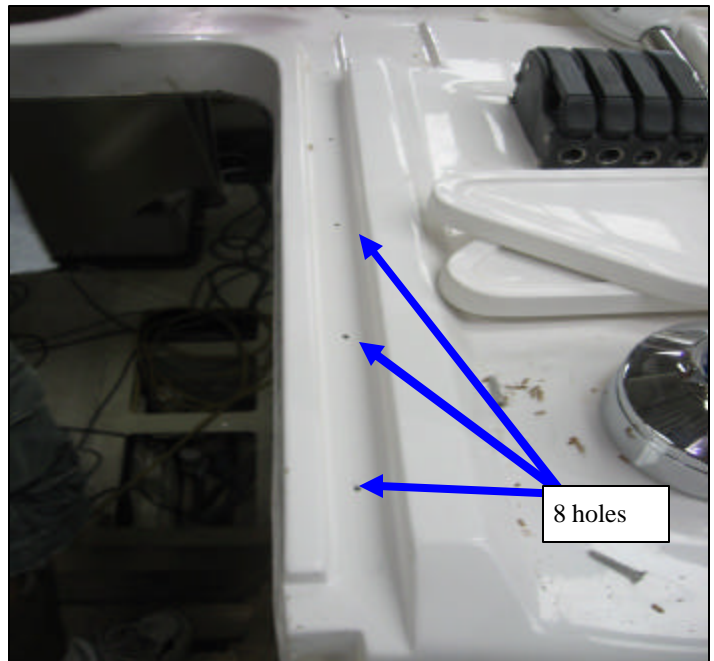
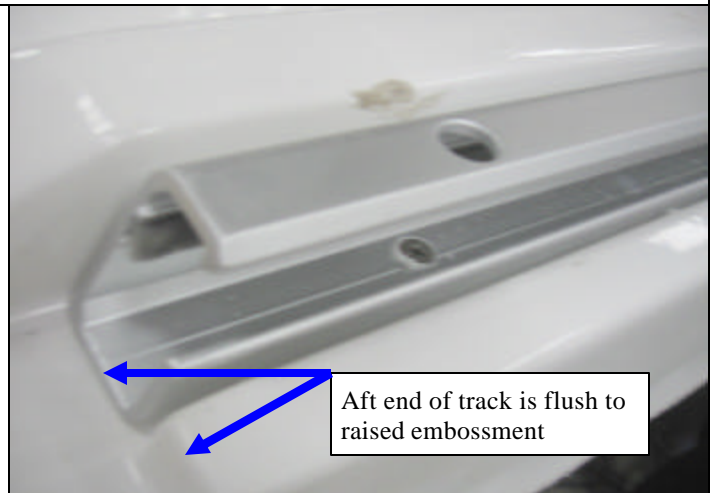


## H45cc Decking Stage Companionway Slider Installation

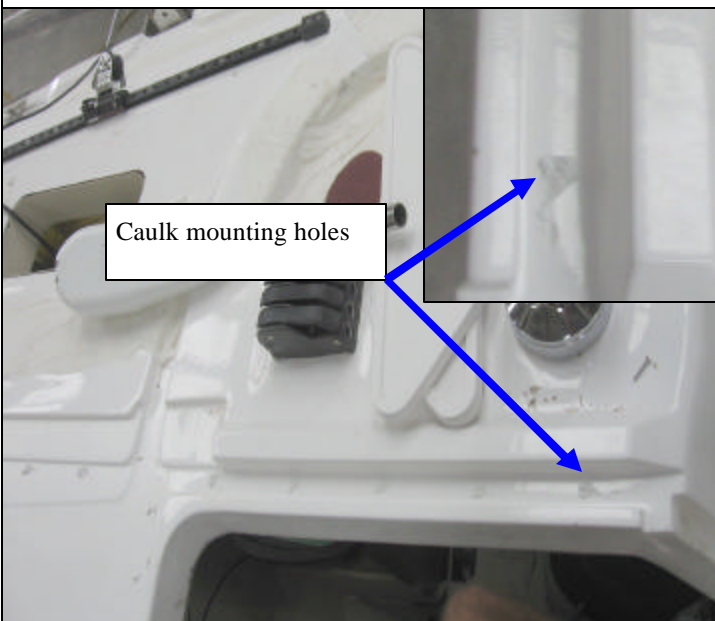
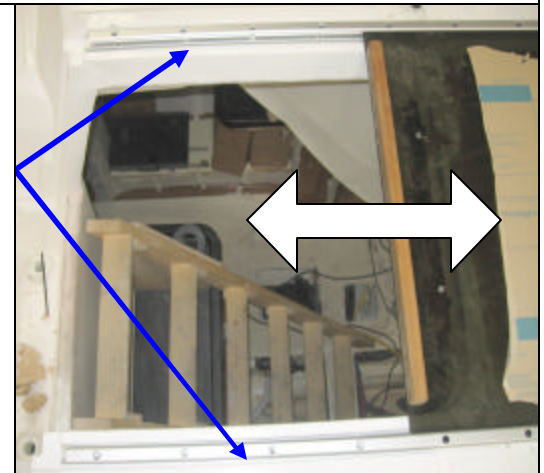
### Slider track Installation:

1. Mount port & starboard slider track on their embossment with plexiglass hatch, now you need to ensure gaps between hatch edges to both tracks are even as the slider hatch stays in middle. (the gap should be closed enough for security purpose), mark both slider track outfit location, then remove hatch.
2. Mark slider track mounting hole locations, there should be 8 mounting holes for each track, remove track from embossment.
3. Use designated drill bit to drill mounting holes 1-1/4" deep for #10 flat head wood screws thru glass to wood, clean all mounting holes.
4. Apply marine sealant 795 to caulk around slider track all mounting holes then mount one side of slider track then install hatch to track then install slider track to the other side of hatch, secure the other side of track to deck.
5. After both slider tracks are secured, **the hatch should operate smoothly. Both stainless back-stops of the hatch should not rub on deck surface** ( do necessary adjustments as needed).
6. Mount slider hatch stainless plate on inboard raised embossment then C-7 drill bit to drill mounting holes thru plate tap holes (4 holes on each plate).
7. Caulk on mounting holes and secure the plate on the door frame using #10 x 1" long flat head wood screws.
8. Clean up excess caulk



Drill slider track mounting holes by using C-7 drill bit, drill 1-1/4" deep thru glass to wood, no thru, then caulk the mounting holes using 795 sealant.

Ensure hatch operate smoothly and back-stops will not rub on deck



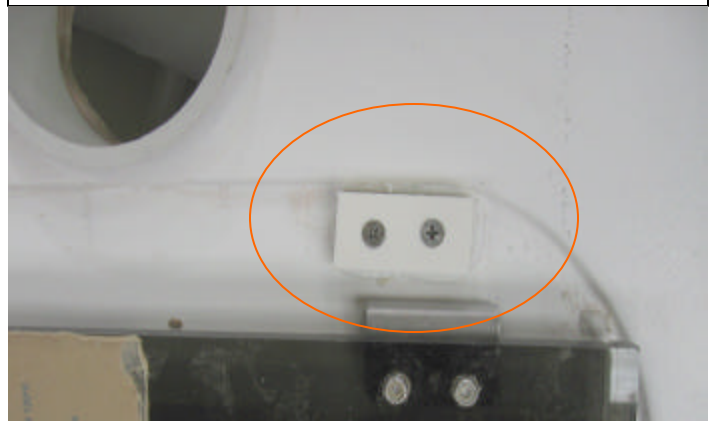
## H45cc Decking Stage Companionway Slider Installation

### Slider Stop Installation:

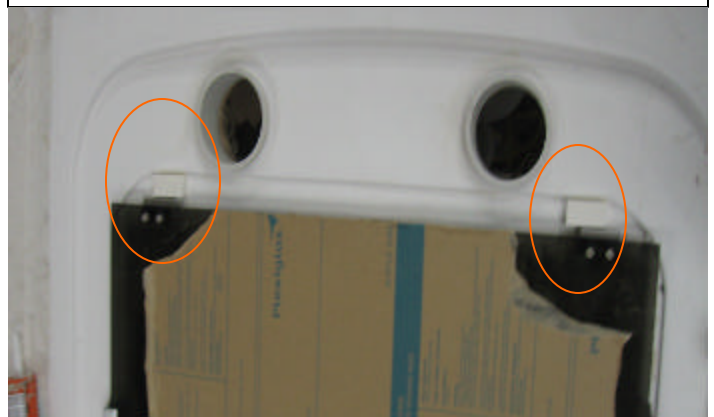
1. Slide the hatch all the way forward, mount starboard material deck in both fwd end of stainless Back-stop. Do not allow port and starboard side fwd corners of hatch cross over deck sea hood radius.
2. At this location, mount both starboard material (plastic ) block as hatch fwd stops, mark fwd -stop mounting hole locations, use designated drill bit to drill mounting holes for #10 flat head wood screws. 1-1/2" long of fasteners will be used.
3. Clean mounting holes and use marine sealant 795 to caulk on mounting holes.
4. Install both fwd-stop, using #10 x 1-1/2" flat head wood screws to secure both stops.
5. Mount slider aft stop on aft face of slider stainless stop, drill mounting location and clean mounting holes.
6. Apply marine sealant 795 to caulk on mounting holes then secure both stops using #10x 1-1/2" flat head wood screws.



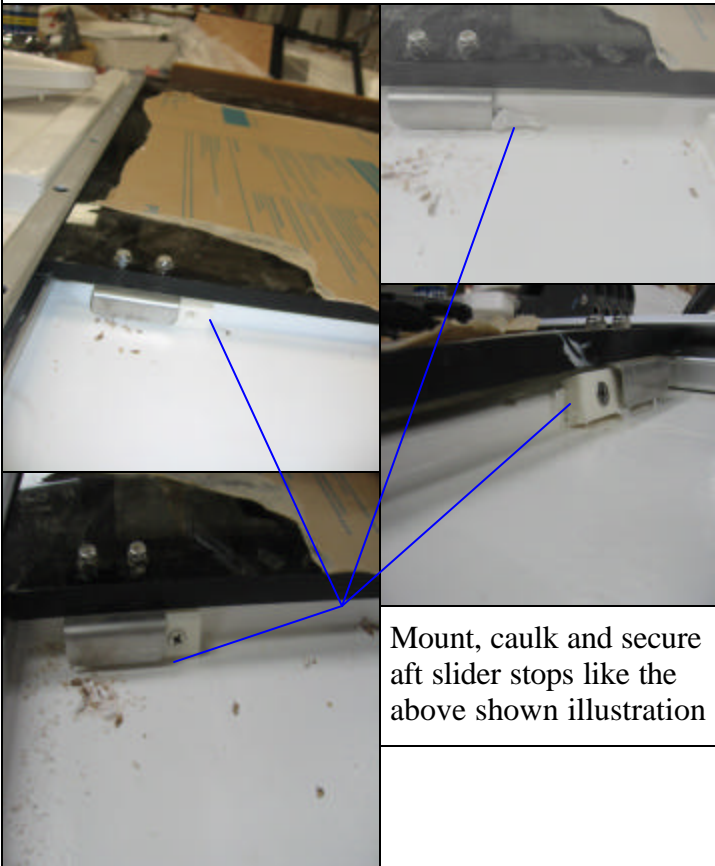
Caulk around on fwd-stop mounting holes, 2 mounting holes on each side



Secure both fwd-stops on deck using #10 x 1-1/2" flat head wood screws thru glass to wood.



Install slider stainless plate on inboard raised embossment



Mount, caulk and secure aft slider stops like the above shown illustration

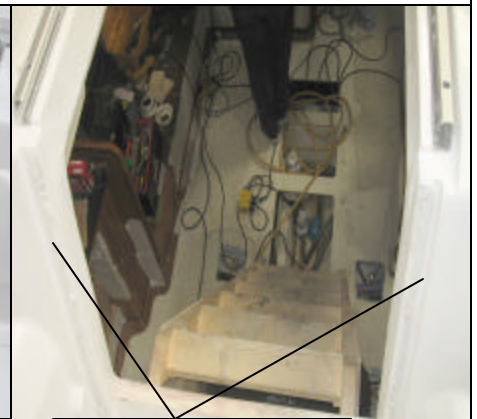


## H45cc Decking Stage Companionway Drop-In Door Installation

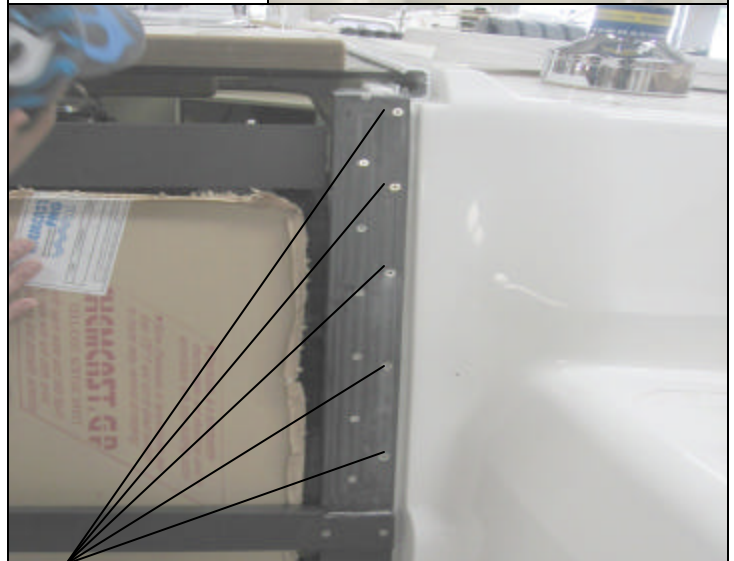
1. Use C-7 with countersunk head to drill drop-in door frame both sides, 5 thru holes each side and even place.
2. Mount the drop-in door in place with the upper end of the plastic frame flush to slider track inboard raised embossment, mark mounting hole location thru pre-drill countersunk holes to deck.
3. Use designated drill bit to drill mounting holes for drop-in door installation, remove the door from deck.
4. Clean up mounting holes and use marine sealant 795 to caulk on those mounting holes, including entire mounting surface, and brat should be lower than deck entrance cutout, otherwise, leaking problem may occur at this location.
5. Install the door in place and secure the door to deck using #10 x 1-1/2" flat head wood screws thru glass. (ensure backing wood stripes are in place).
6. After the door is secured, caulk around the entire door frame including bottom end to close up the gap.
7. Caulking sealant on the big gap that is between door frame upper end to track inboard raised embossment.
8. Mount drop-in door frame stainless plate in place then C-7 drill bit to tap 1/2" deep mounting holes thru plate mounting holes (4 holes on each plate).
9. Caulk on mounting holes and secure the plate on the door frame using #10 x 1/2" long flat head wood screws.



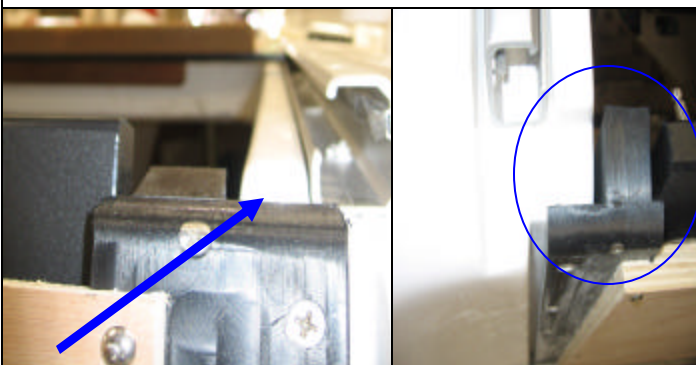
Drill mounting holes thru door frame



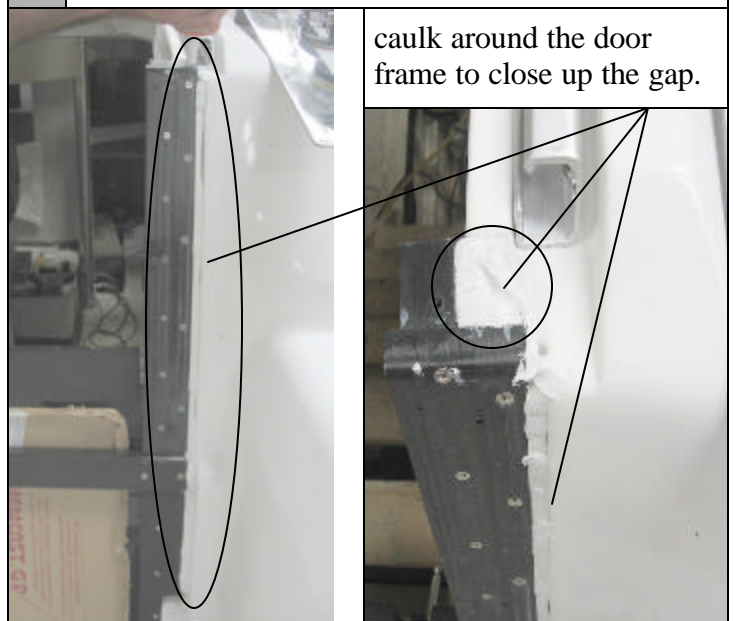
Caulk on mounting holes



Secure the drop in door to deck entrance using #10 x 1-1/2" flat head wood screws.



The drop-in door upper end of the plastic frame flush to slider track inboard raised embossment

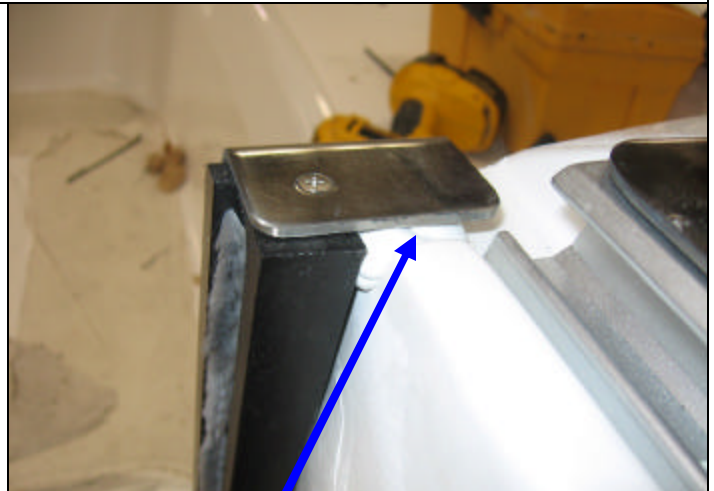


caulk around the door frame to close up the gap.

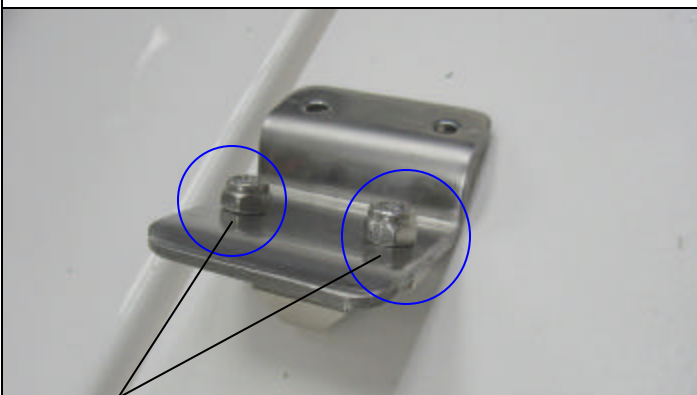
# H45cc Decking Stage Companionway Drop-In Door Installation



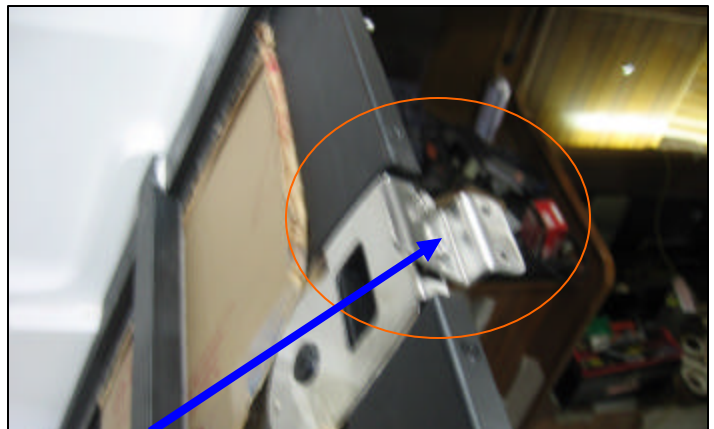
Overview of the slider & drop-in door installation



Ensure this place is caulked with sealant



Use pan head #10-24 to hold the door lock to striker plate, use lock nuts to secure the thru bolts.



Mount hatch striker plate on door lock receiver to align with hatch for this part's mounting location.

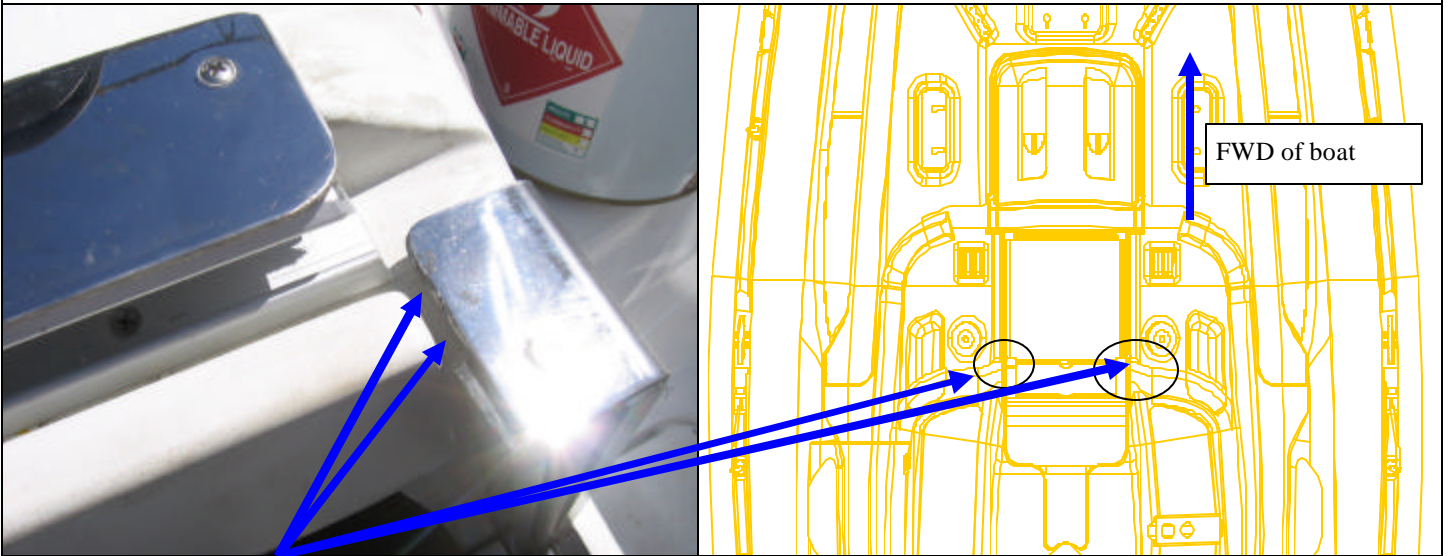


Door frame bottom edge caulking to close gap



Overview from inside lower, the the gap has been closed by sealant

## H45cc Decking Stage Companionway Slider Track Installation (Update 9-30-05)



Before install drop-in board stainless plate, Use marine sealant 795 to caulk on this location to close up the gap. Caulk on port & starboard side.