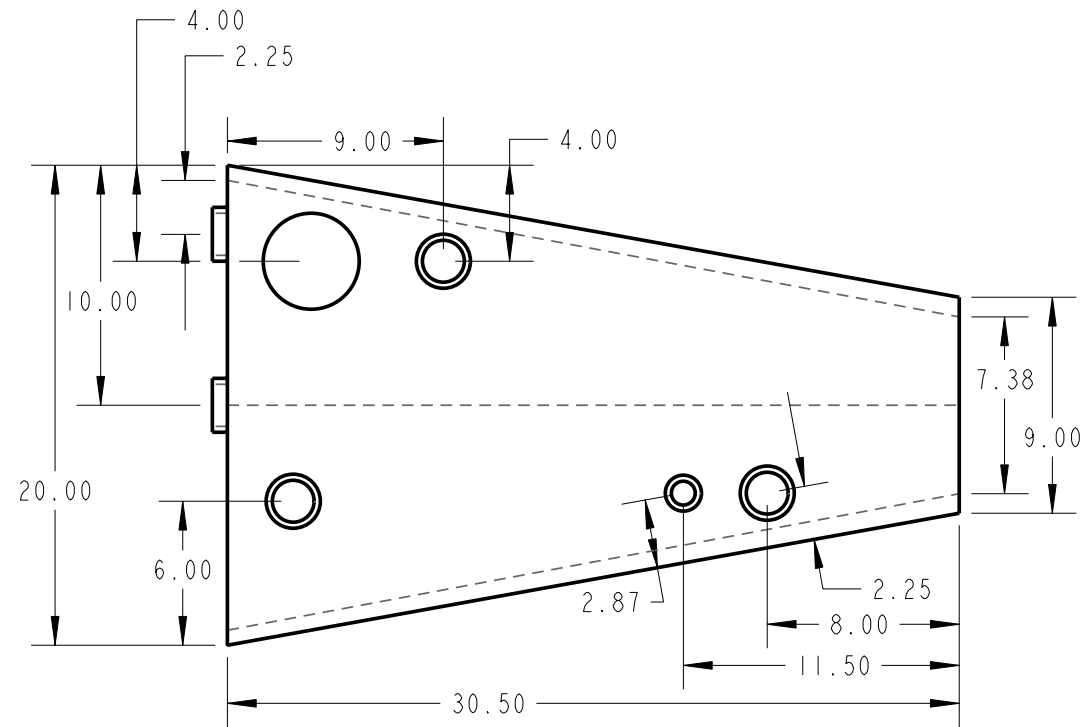
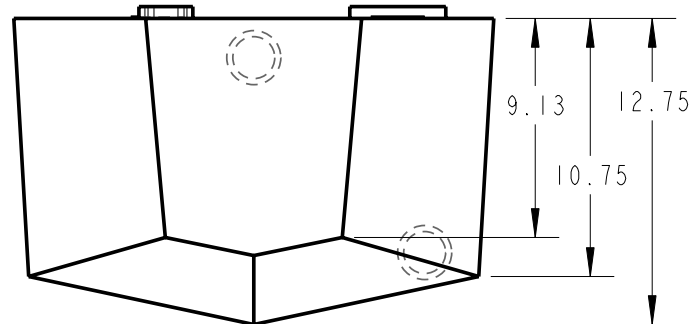
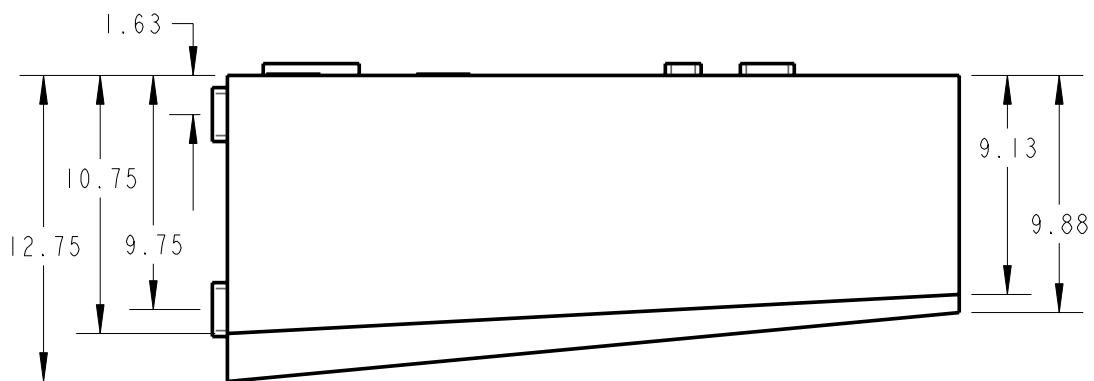
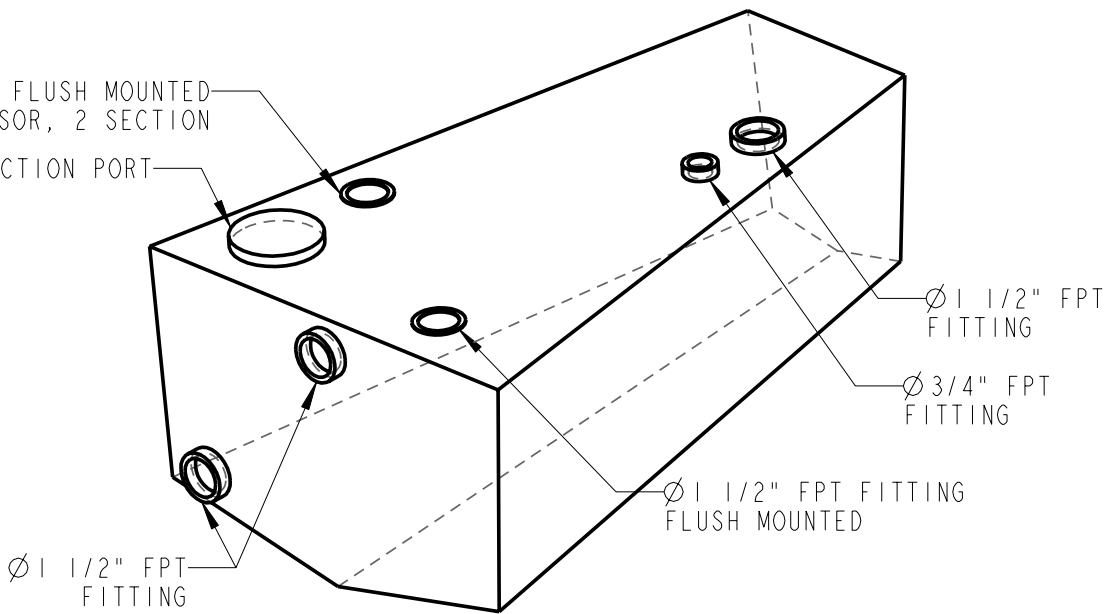


SYMBOL	REVISIONS	DATE	ENG
A	ADD 3" INSPECTION PORT	11/14/2003	JLK
B	ADD 1 1/2" FPT FITTING AND WEMA WASTE SENSOR, 2 SECTION	06/25/04	JLK



Ø 1 1/2" FPT FITTING, FLUSH MOUNTED
 INSTALL WEMA WASTE SENSOR, 2 SECTION
 3" INSPECTION PORT



FWD WASTE TANK
 NOTES: SCALE=0.125
 1. MATERIAL: POLYETHYLENE, ROTOCAST
 2. ALL DIMENSIONS ARE INCHES AND DEGREES
 3. BREAK AND DEBURR ALL EDGES
 4. TANK MUST MEET USCG AND ABYC/NMMA STANDARDS
 5. APPROX. 20 GALS.
 6. THIS DRAWING REPLACES DWG#4465004A

PROPRIETARY INFORMATION: THIS DRAWING CONTAINS INFORMATION FOR WHICH HUNTER MARINE CORPORATION HAS PROPRIETARY RIGHTS.



DRAWING TITLE:
FWD WASTE TANK

DRAWN BY: JLK	DATE: 14-Nov-03	SHEET 1	OF 1
SCALE: 0.125	HUNTER PART NO. 1002853	REVISION	DRAW # 4565004A

CHECKED: