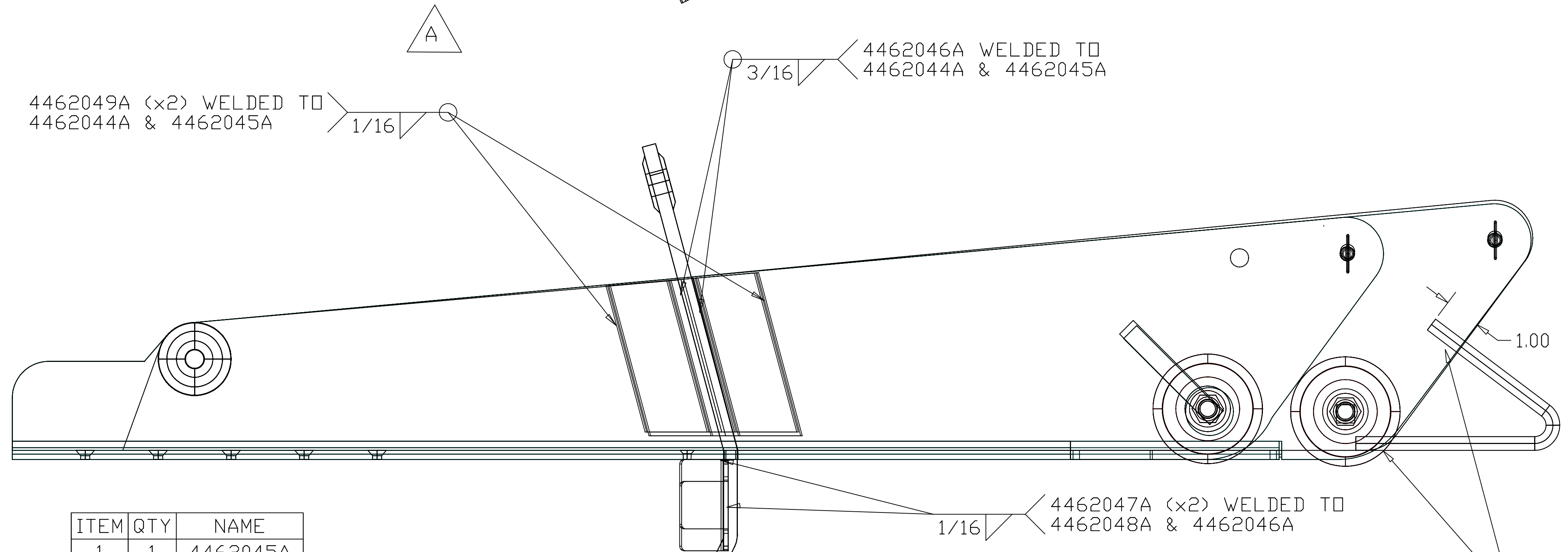
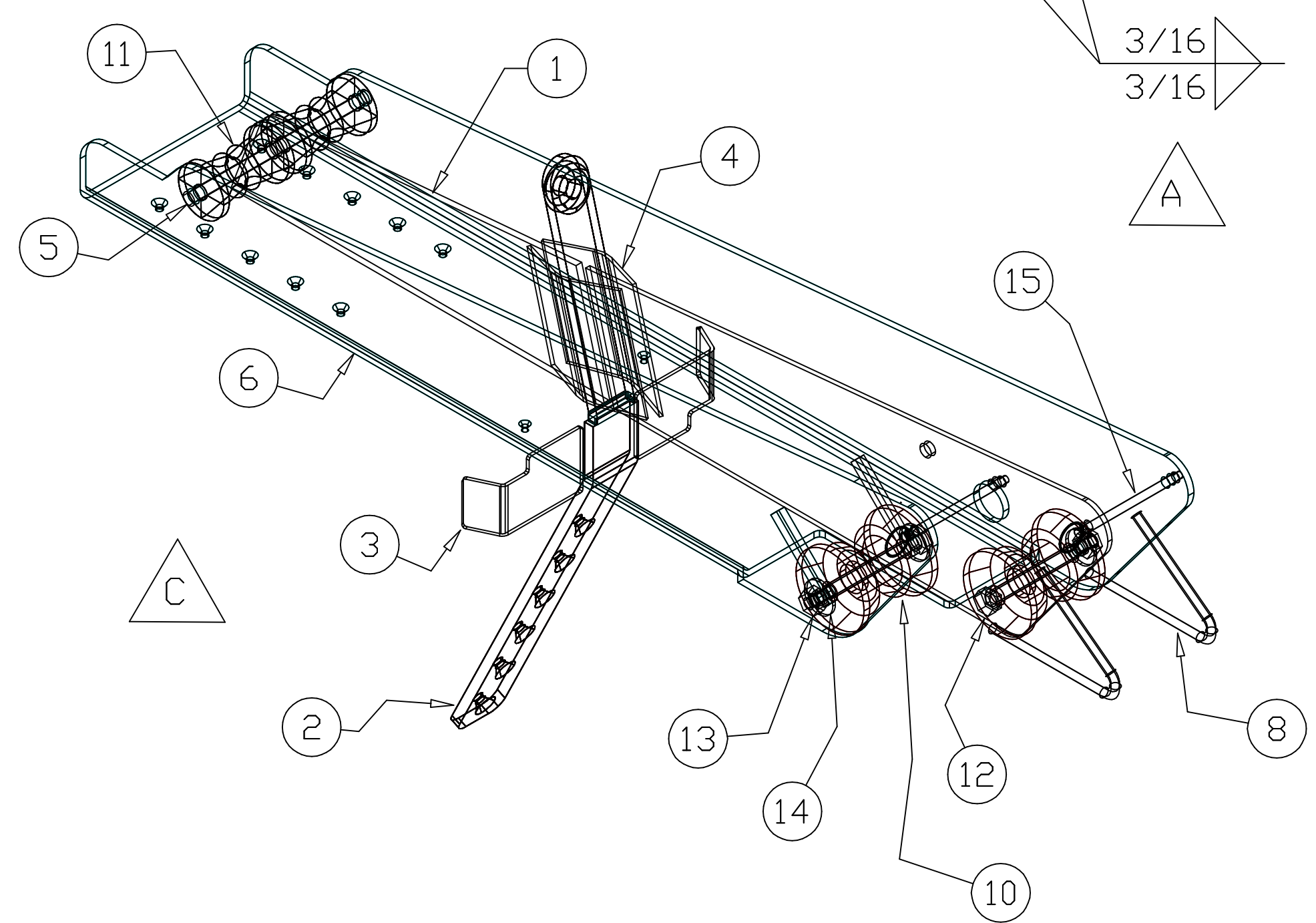


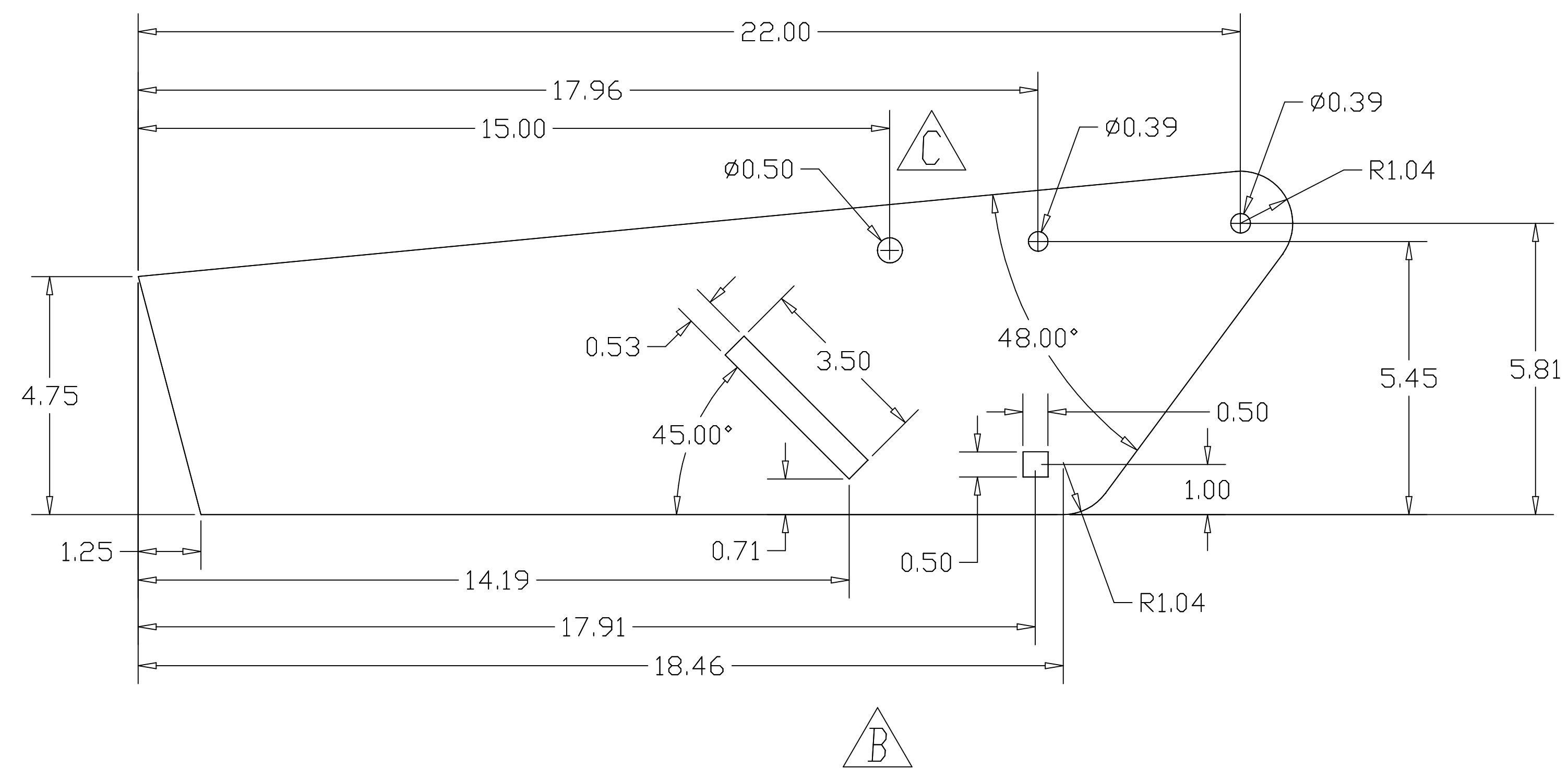
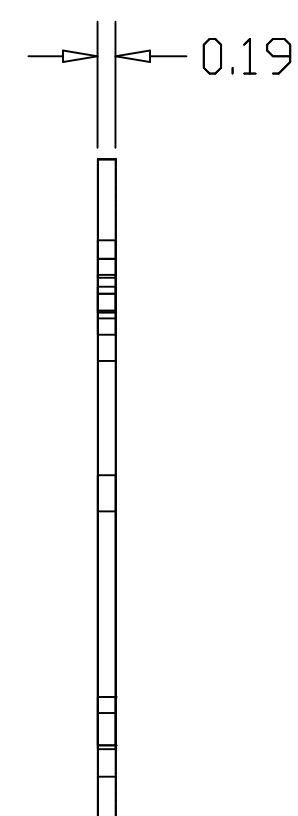
NOTES:
 1. MAKE ONE PER BOAT
 2. BREAK AND DEBURR ALL SHARP EDGES
 3. FINISH: BRIGHT POLISH AFTER WELDING



ITEM	QTY	NAME
1	1	4462045A
2	1	4462046A
3	2	4462047A
4	1	4462049A
5	1	4462050A
6	1	4462048A
7	1	4462044A
8	2	4462909A
10	2	HUNA2043
11	2	HUNA2046
12	2	16X45-HH
13	2	16FHUT
14	3	16-WASHER
15	2	QUICKPIN

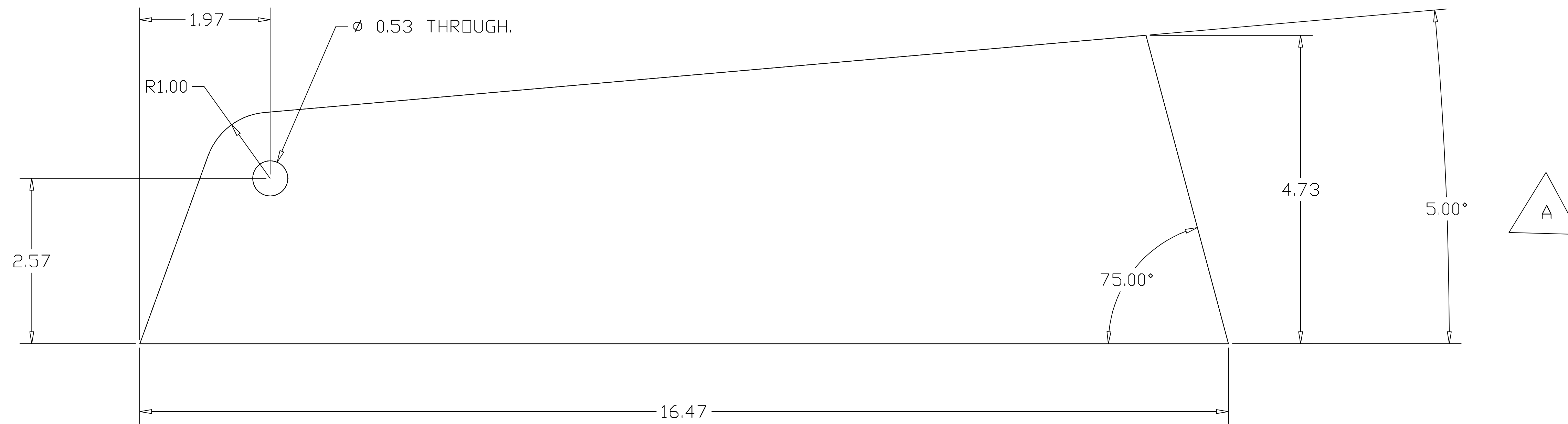


C		DRAWN BY: P.S. CHECKED BY: M.C. DATE: 7/7/96	
E		SHORTEN LENGTH: 0.01" - 0.02"	
A		BARELY LENGTHEN SIDE PLATES FOR P/W 0.01" - 0.02"	
P45 BOW ROLLER ASSEMBLY			
4462042A	REVISED FOR M.C.		
1	OF 1	ISSUED BY:	
KJC		DATE:	
7/7/96		SCALE:	1/2"=1"
REV. NO.:	D		

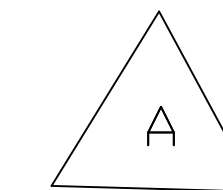
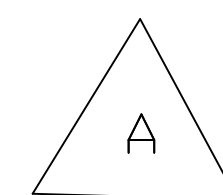


- NOTES:
1. BREAK AND DEBURR ALL SHARP EDGES
 2. MAKE ONE PER BOAT
 3. MATERIAL 316 S.S. 7 Ga. SHEET

C ADD HOLE FOR SPINNAKER TACKLE/26 K.K.C.	
E ADD DIMENSIONAL SKETCH FOR SQUARE/26 K.K.C.	
A ADD FWD BANDS / BASE TACKLE LOC./26 K.K.C.	
DATE:	REVISED:
HUNTER	
P45 BOW ROLLER CENTER WEB FWD	
4462044A	REVISED FOR NO.
1 OF 1	ISSUED BY:
KJC	DATE:
6/26/96	SCALE:
1/2"=1"	D



- NOTES:
1. BREAK AND DEBURR ALL SHARP CORNERS
 2. MAKE ONE PER BOAT
 3. MATERIAL: 316 S.S. 7 GAGE THK PLATE

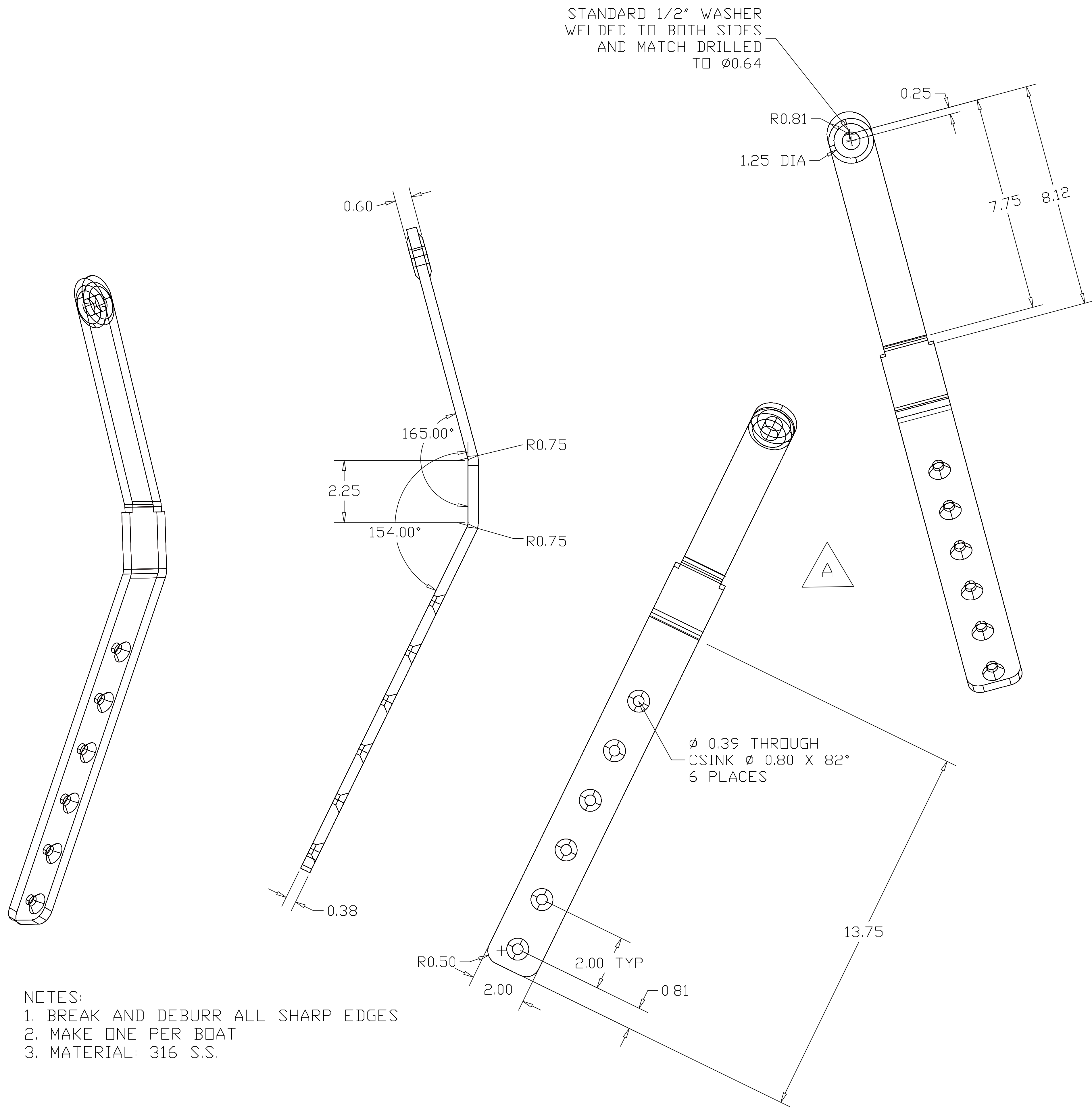


REV	DESCRIPTION	DATE

REV	DESCRIPTION	DATE

HUNTER


REV	DESCRIPTION	DATE
1	P45 BOW ROLLER CENTER WEB AFT	6/28/96
2	4462045A	
3	1 OF 1	
4	KJC	
5	6/28/96	
6	FULL	

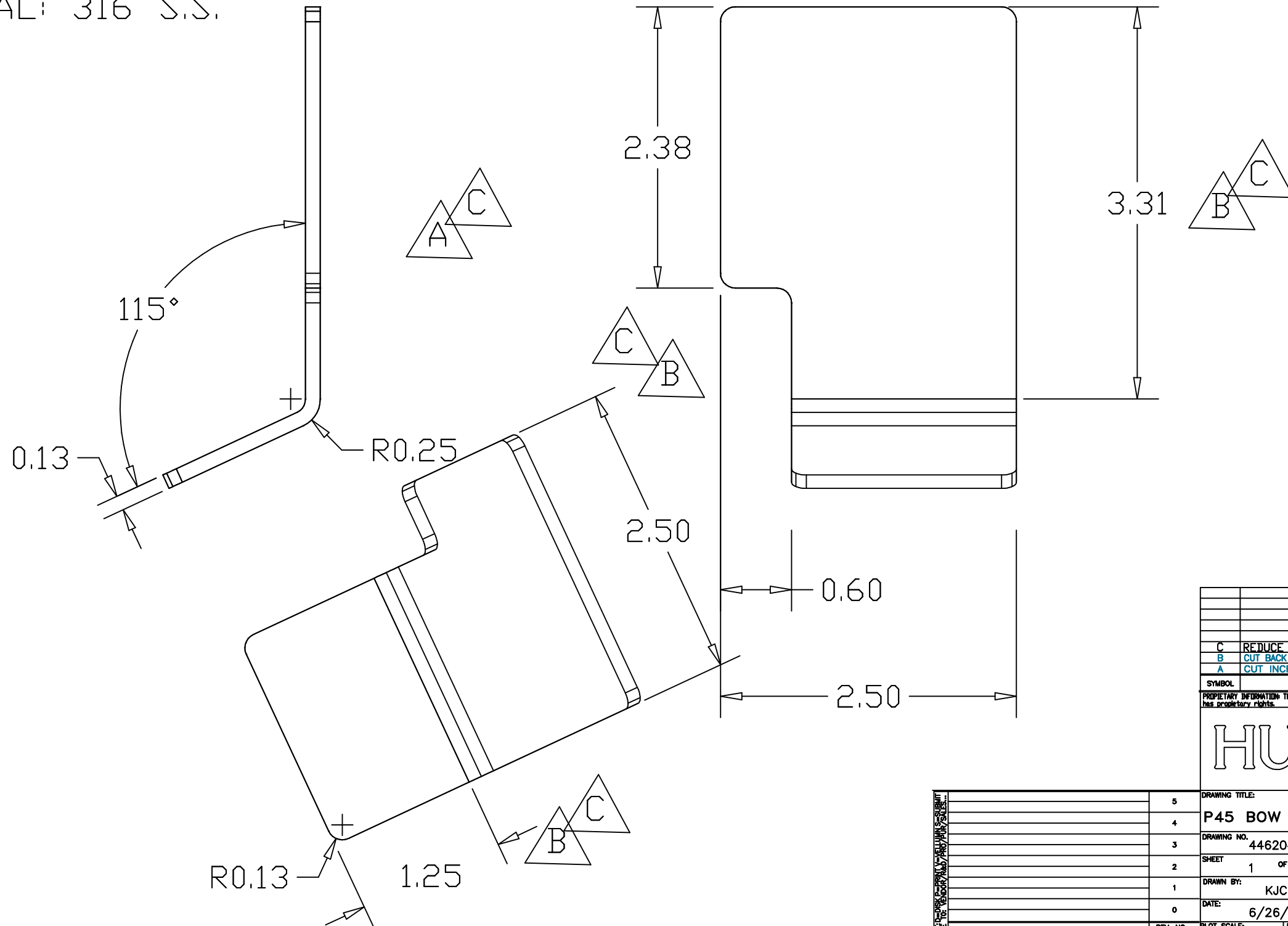


- NOTES:
 1. BREAK AND DEBURR ALL SHARP EDGES
 2. MAKE ONE PER BOAT
 3. MATERIAL: 316 S.S.

HUNTER	
P45 BOW ROLLER H/S STRAP	
4462048A	REVISED
1 OF 1	DATE: 6/28/96
KJC	DATE: 6/28/96
6/28/96	SCALE: 1/2"=1"

NOTES:

1. BREAK & DEBURR ALL EDGES
2. MAKE TWO MIRROR IMAGE PER  BOAT
3. MATERIAL: 316 S.S.



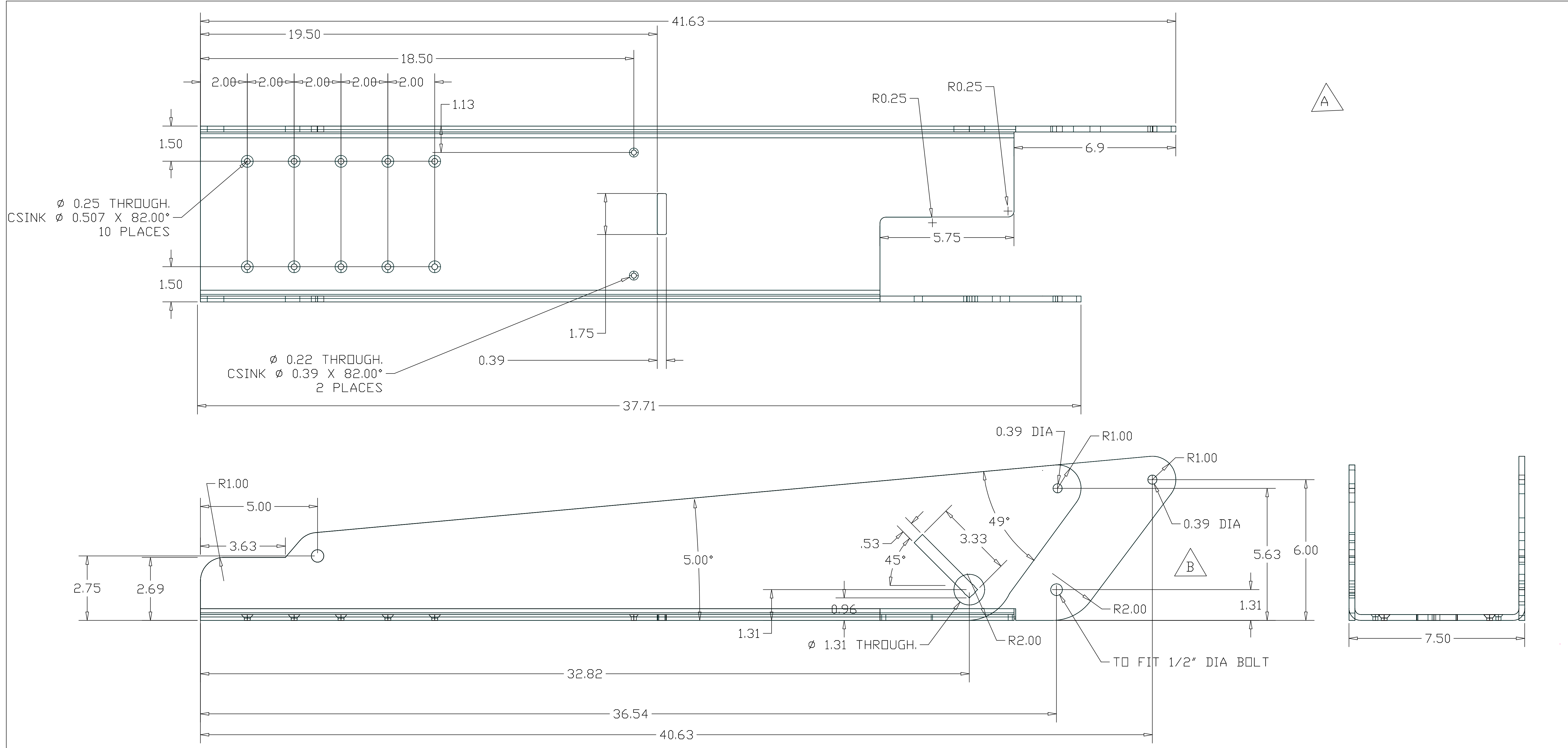
SYMBOL	REVISIONS	DATE	NAME
C	REDUCE WIDTH BY 3/16"	10/31/96	KJC
B	CUT BACK TOP ON SIDES & SHORTEN SIDES	9/23/96	KJC
A	CUT INCREASE SIZE TO FIT RUB RAIL	9/30/96	JJD

PROPRIETARY INFORMATION: This document discloses information for which HUNTER MARINE CORP. has proprietary rights.

HUNTER

DRAWING TITLE:		5	
P45 BOW ROLLER RUB RAIL GAURD		4	
DRAWING NO.	4462047A	REVISION NO.	3
SHEET	1 OF 1	HUNTER PART NO.	2
DRAWN BY:	KJC	CHECK'D BY:	1
DATE:	6/26/96	DATE:	0
REV. NO.		PLOT SCALE:	FULL
		PAPER SIZE:	B
		SCALE:	FULL

- DRAWING SUBMITALS -



Ø 0.25 THROUGH.
CSINK Ø 0.507 X 82.00°
10 PLACES

Ø 0.22 THROUGH.
CSINK Ø 0.39 X 82.00°
2 PLACES

A

B

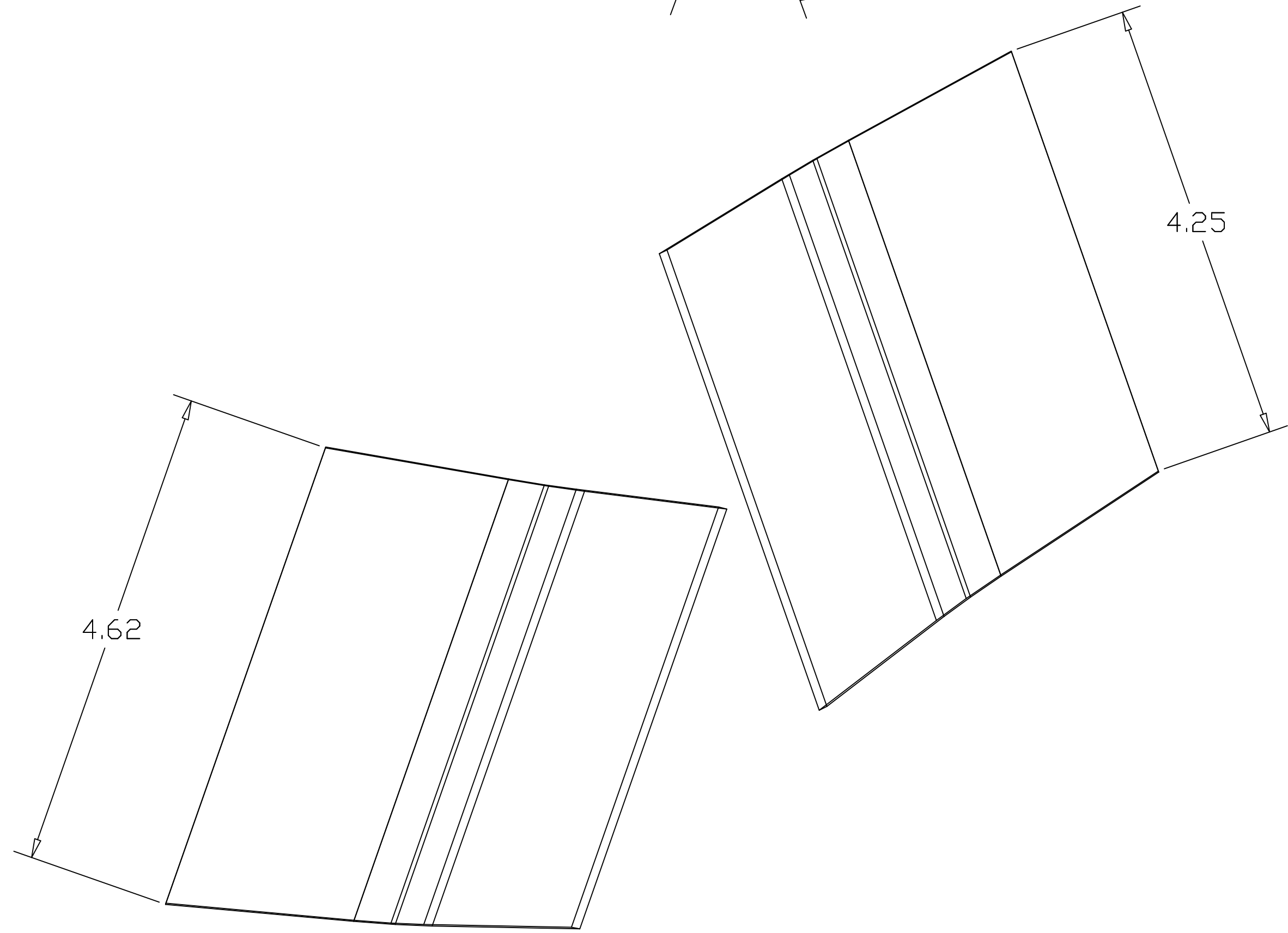
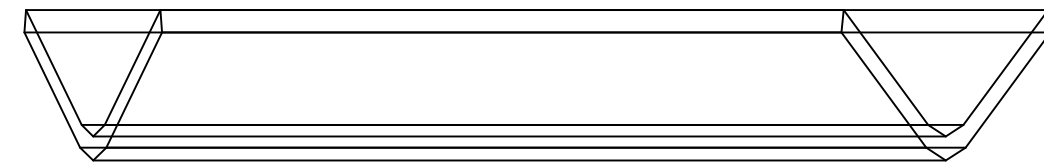
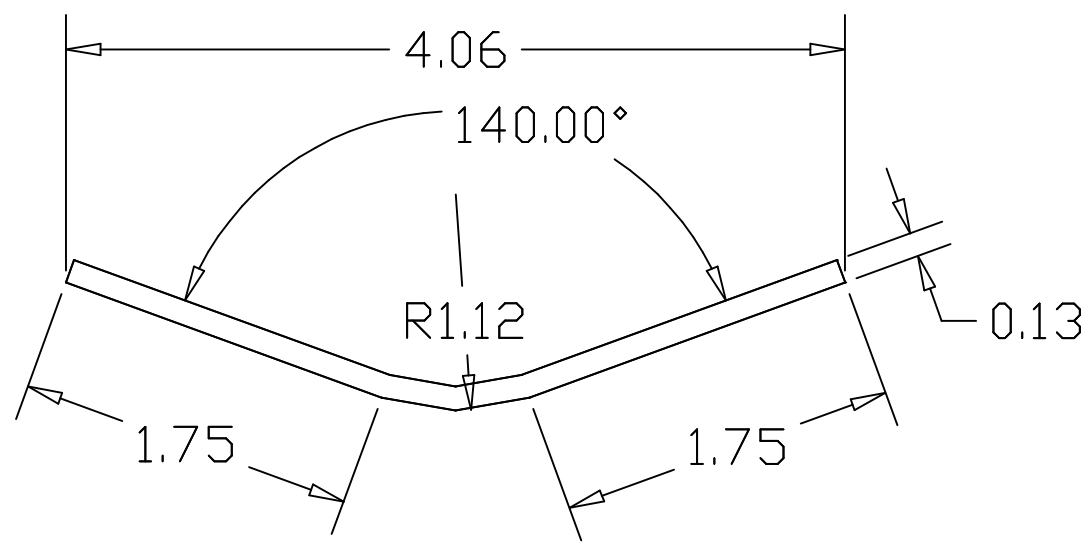
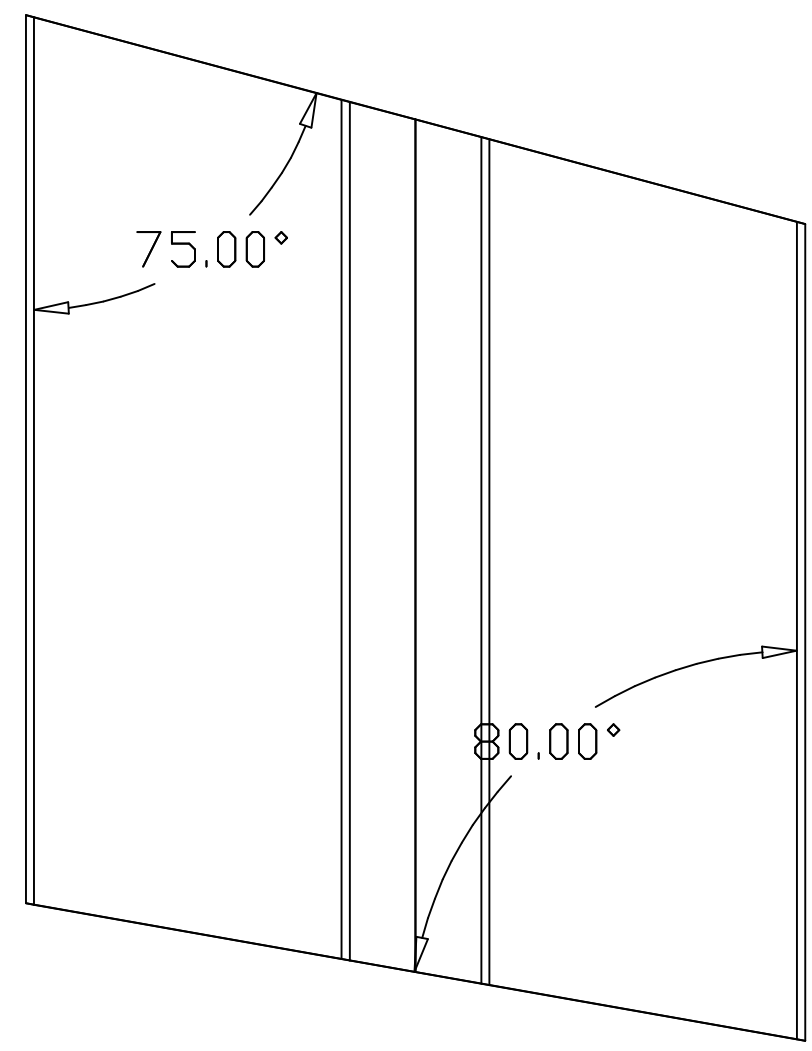
NOTES:
1. BREAK AND DEBURR ALL EDGES
2. MAKE ONE PER BOAT
3. MATERIAL: 316 S.S. GAGE 7 THK PLATE
4. FINSH AFTER FABRICATION AND ASSEMBLY

REV	DESCRIPTION	DATE
1	SHORTEN OVERALL LENGTH	9/11/16
2	ADD ANCHOR BARS/RAISE END PROFILE 8/20/16	8/20/16
3	REVISIONS	
4	REVISIONS	
5	REVISIONS	

HUNTER

P45 BOW ROLLER BOTTOM AND SIDES

PROJECT NO.	4462048A	ISSUE NO.	1 OF 1
DESIGNER	KJC	CHECKED BY	
DATE	7/3/96	DATE	
DRAWN BY		CHECKED BY	



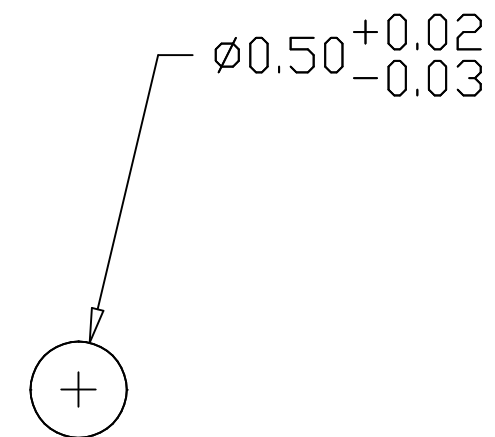
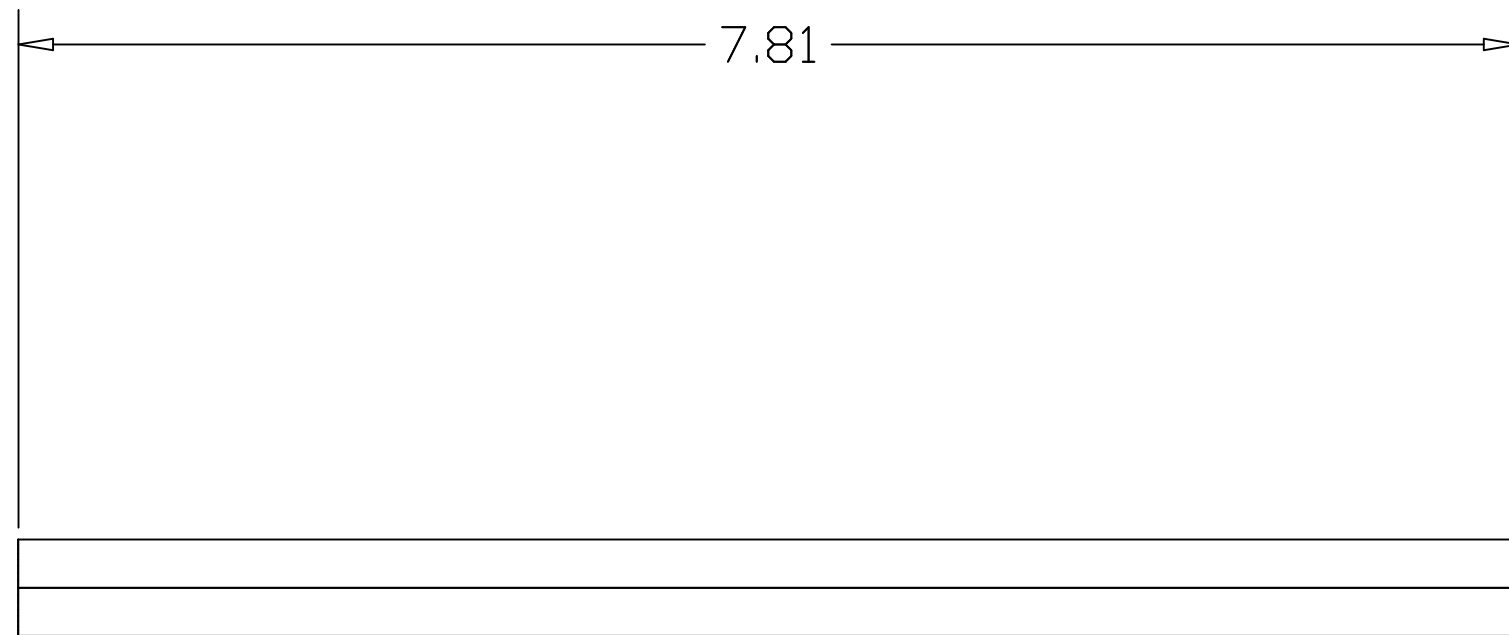
- NOTES:
1. BREAK AND DEBURR ALL EDGES
 2. MAKE TWO MIRRORED PER BOAT
 3. MATERIAL 316 S.S.

NO.	REVISIONS	DATE	BY



NO.	REVISIONS	DATE	BY
1			
2			
3			
4			
5			
6			
7			
8			
9			
10			
11			
12			
13			
14			
15			
16			
17			
18			
19			
20			
21			
22			
23			
24			
25			
26			
27			
28			
29			
30			
31			
32			
33			
34			
35			
36			
37			
38			
39			
40			
41			
42			
43			
44			
45			
46			
47			
48			
49			
50			
51			
52			
53			
54			
55			
56			
57			
58			
59			
60			
61			
62			
63			
64			
65			
66			
67			
68			
69			
70			
71			
72			
73			
74			
75			
76			
77			
78			
79			
80			
81			
82			
83			
84			
85			
86			
87			
88			
89			
90			
91			
92			
93			
94			
95			
96			
97			
98			
99			
100			

P45 BOW ROLLER H/S GAURD
 4462048A
 1 OF 1
 KJC
 6/27/96
 FULL D FULL



NOTES:

1. BREAK AND DEBURR SHARP EDGES
2. MAKE ONE PER BOAT
3. FINISH POLISHED
4. MATERIAL 316 S.S.

SYMBOL	REVISIONS	DATE	NAME

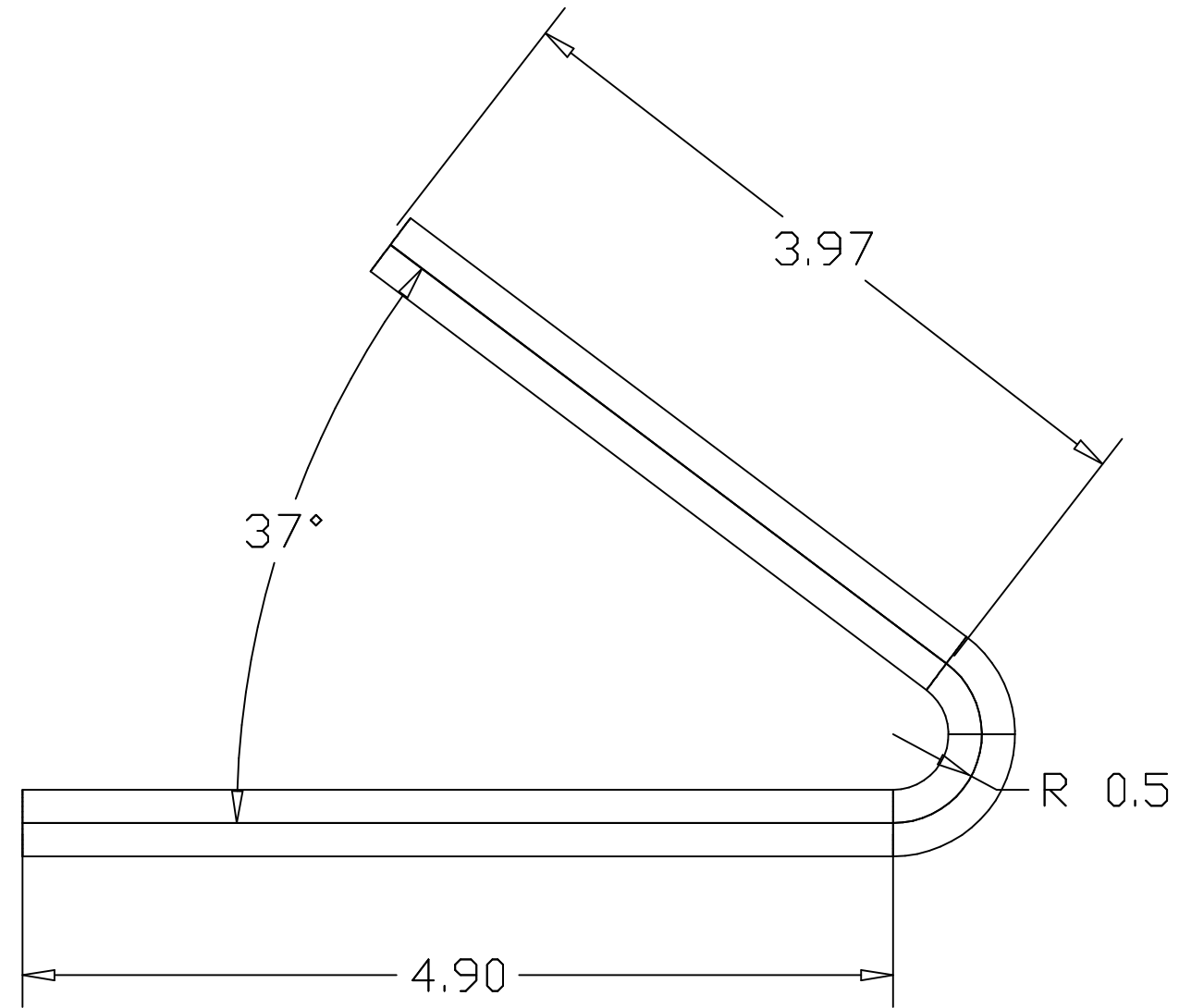
PROPRIETARY INFORMATION This document discloses information for which HUNTER MARINE CORP. has proprietary rights.

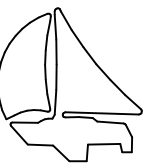


	5	DRAWING TITLE:	
	4	P45 BOW ROLLER 2" ROLLER PIN	
	3	DRAWING NO. 4462050A	REVISION NO.
	2	SHEET 1 OF 1	HUNTER PART NO.
	1	DRAWN BY: KJC	CHECK'D BY:
	0	DATE: 6/29/96	DATE:
	REV. NO.	PLLOT SCALE: FULL	PAPER SIZE: B
			SCALE: FULL

- DRAWING SUBMITALS -

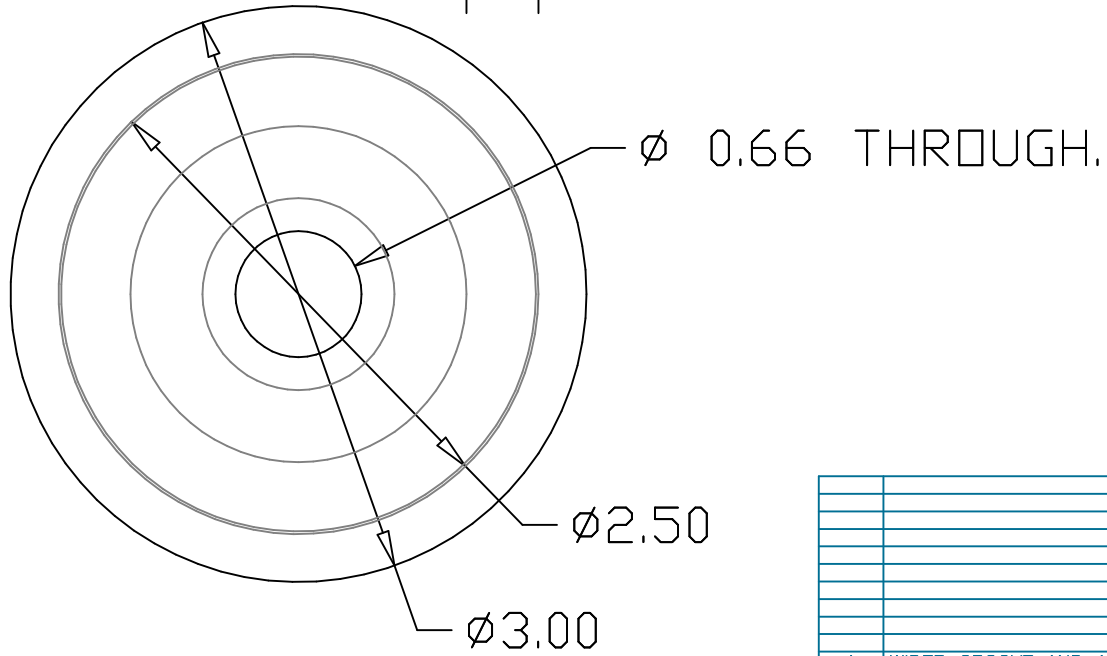
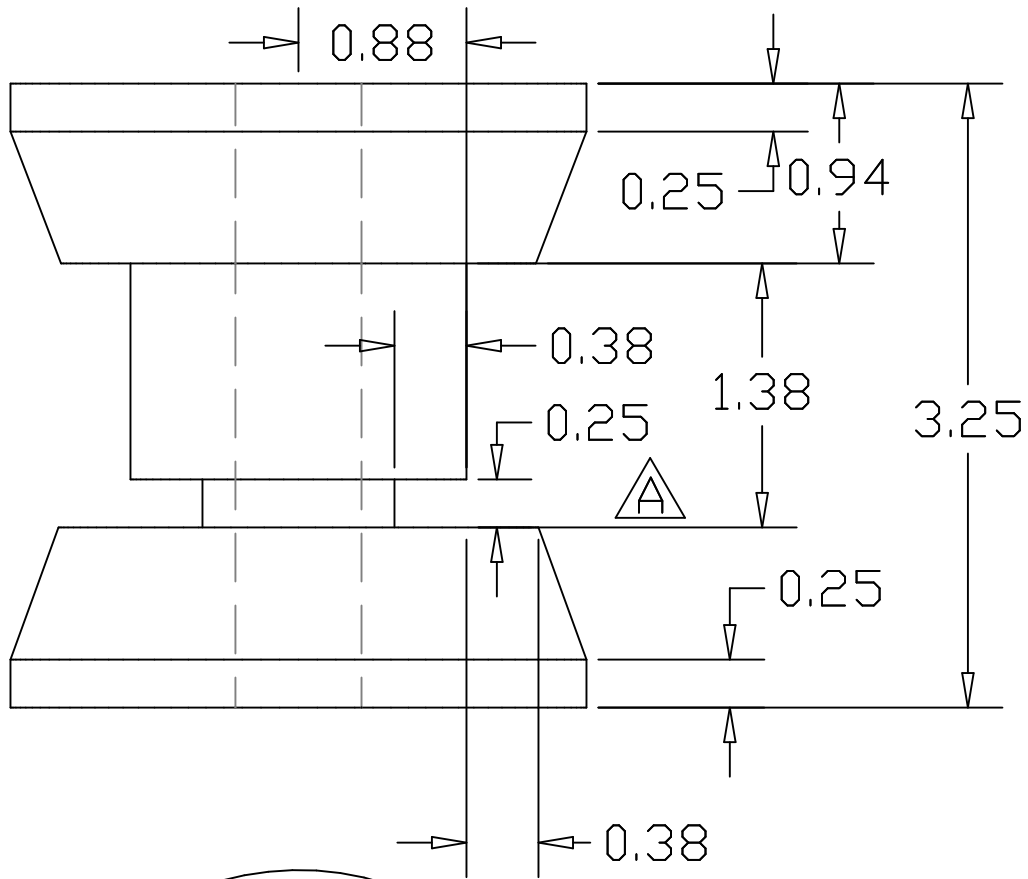
FAB FROM 3/8 DIA S.S. ROD



HUNTER 

DRAWING TITLE:
ANCHOR HOLDER

SHEET 1/#	HUNTER PART No. HUN#	DRAWING NO. 4462909A
--------------	-------------------------	-------------------------



NOTE:
 1. BREAK ALL EDGES
 2. MATERIAL: UHMW-PE

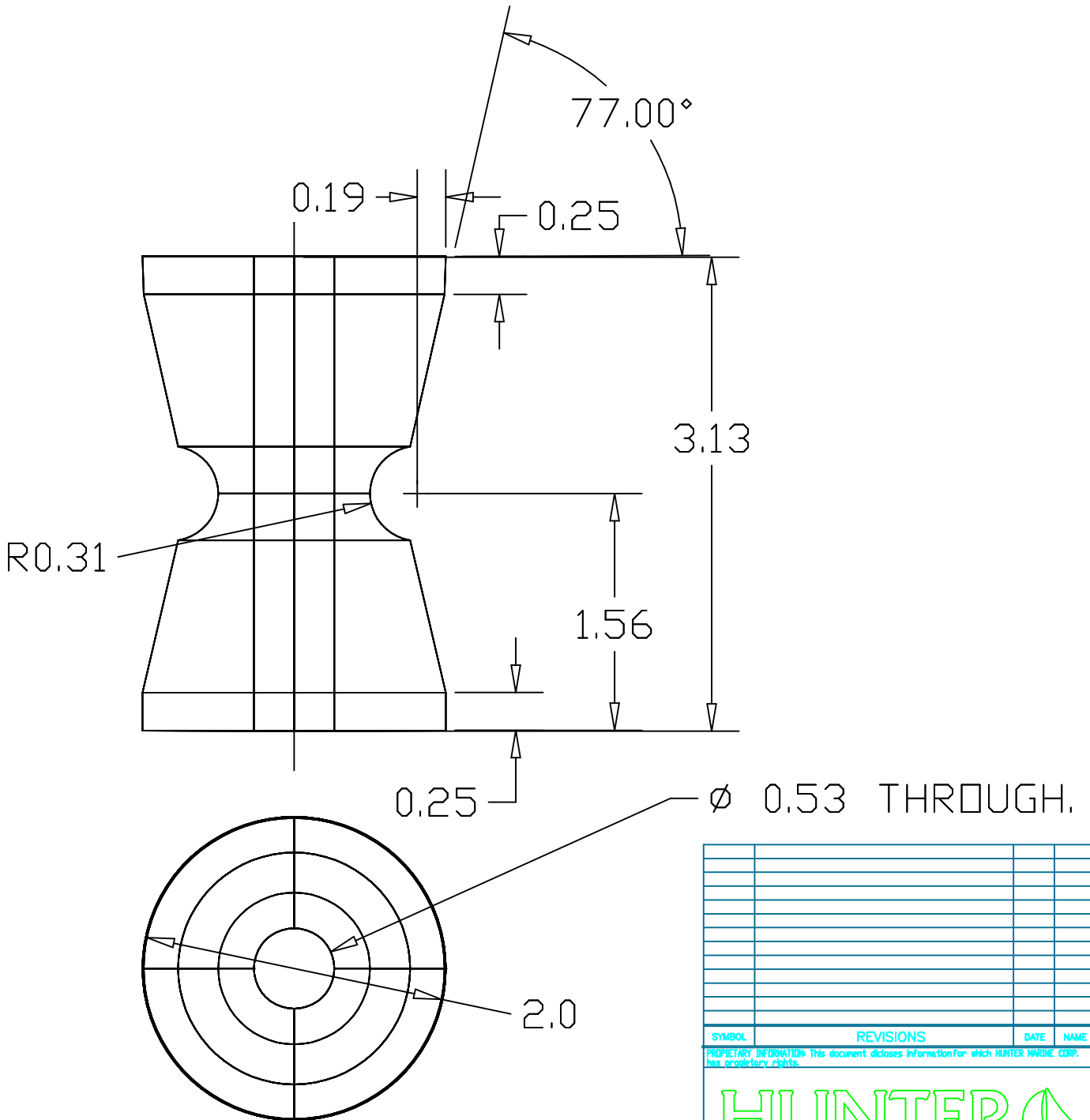
A	WIDER GROOVE AND ADD NOTCH	7/2/97	KJJC
SYMBOL	REVISIONS	DATE	NAME



		5	DRAWING TITLE:	
		4	3" CHAIN ROLLER	
		3	DRAWING NO. HUNA2043	REVISION NO.
		2	SHEET 1 OF 1	HUNTER PART NO.
		1	DRAWN BY: KJC	CHECK'D BY:
		0	DATE: 6/27/96	DATE:
			REV. NO.	PLOT SCALE: PAPER SIZE: A SCALE: FULL

NOTE:

1. BREAK ALL EDGES
2. MATERIAL: UHMW-PE



SYMBOL	REVISIONS	DATE	NAME

PROPRIETARY INFORMATION: This document discloses information for which HUNTER MARINE CORP. has proprietary rights.



REV. NO.	DESCRIPTION	DATE	BY
5			
4			
3			
2			
1			
0			

DRAWING TITLE:			
2" CHAIN ROLLER			
DRAWING NO. HUNA2046		REVISION NO.	
SHEET 1 OF 1		HUNTER PART NO.	
DRAWN BY: KJC		CHECK'D BY:	
DATE: 6/29/96		DATE:	
REV. NO.	PLOT SCALE:	PAPER SIZE:	SCALE:
	FULL	B	FULL