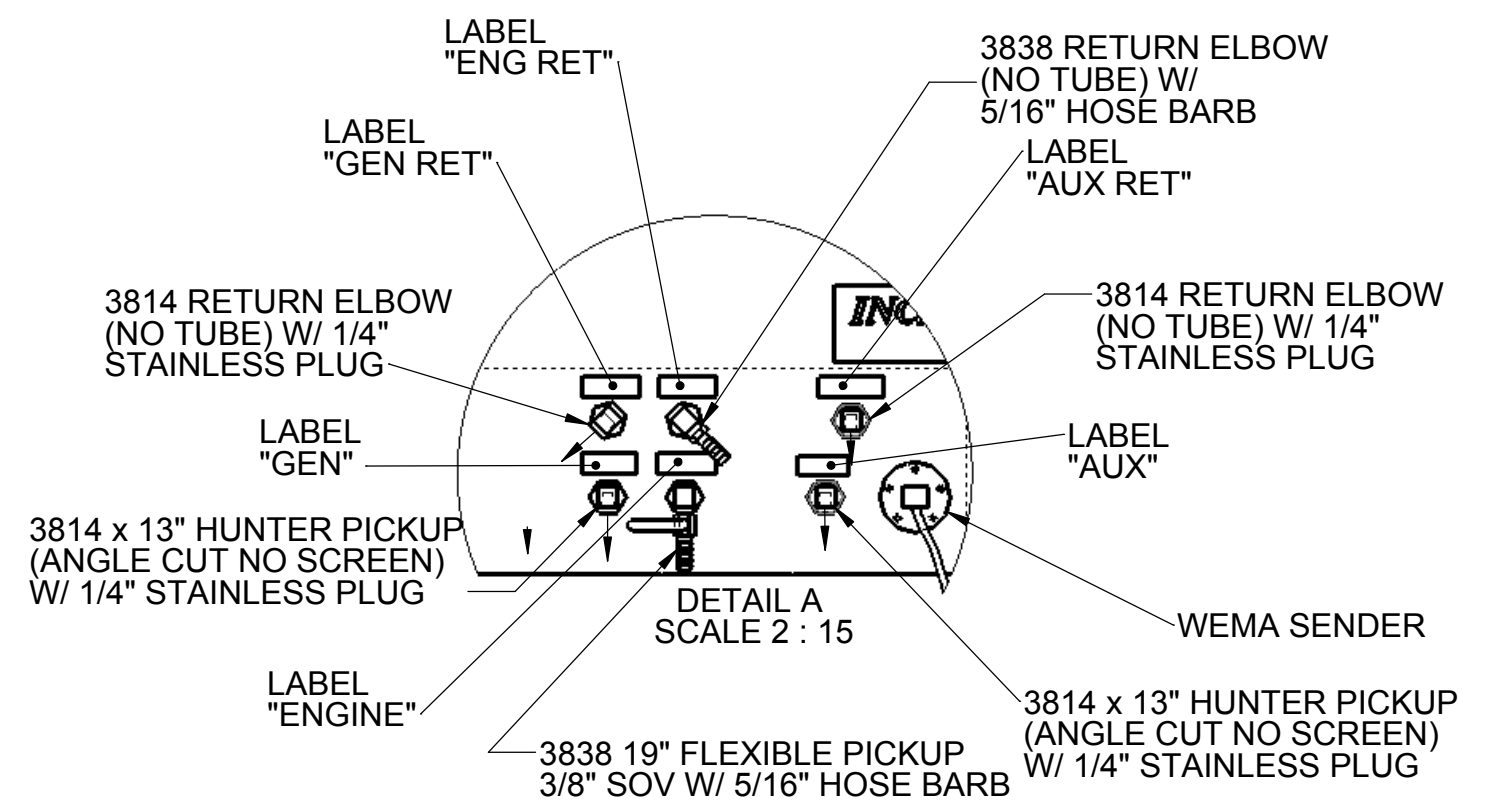
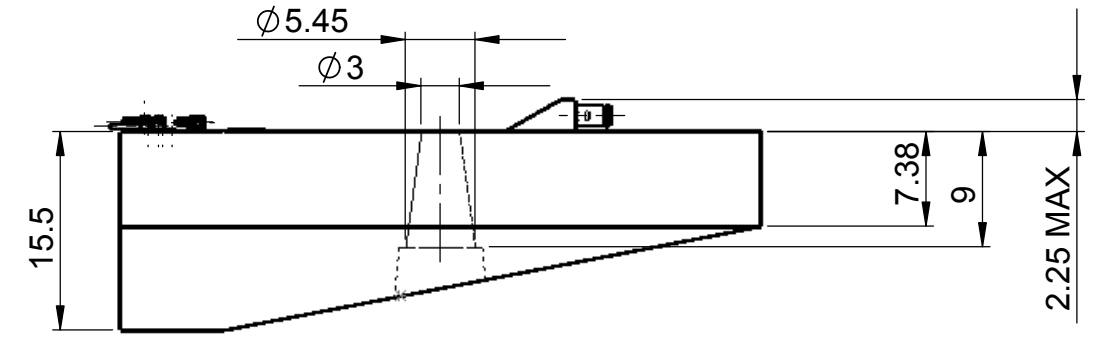
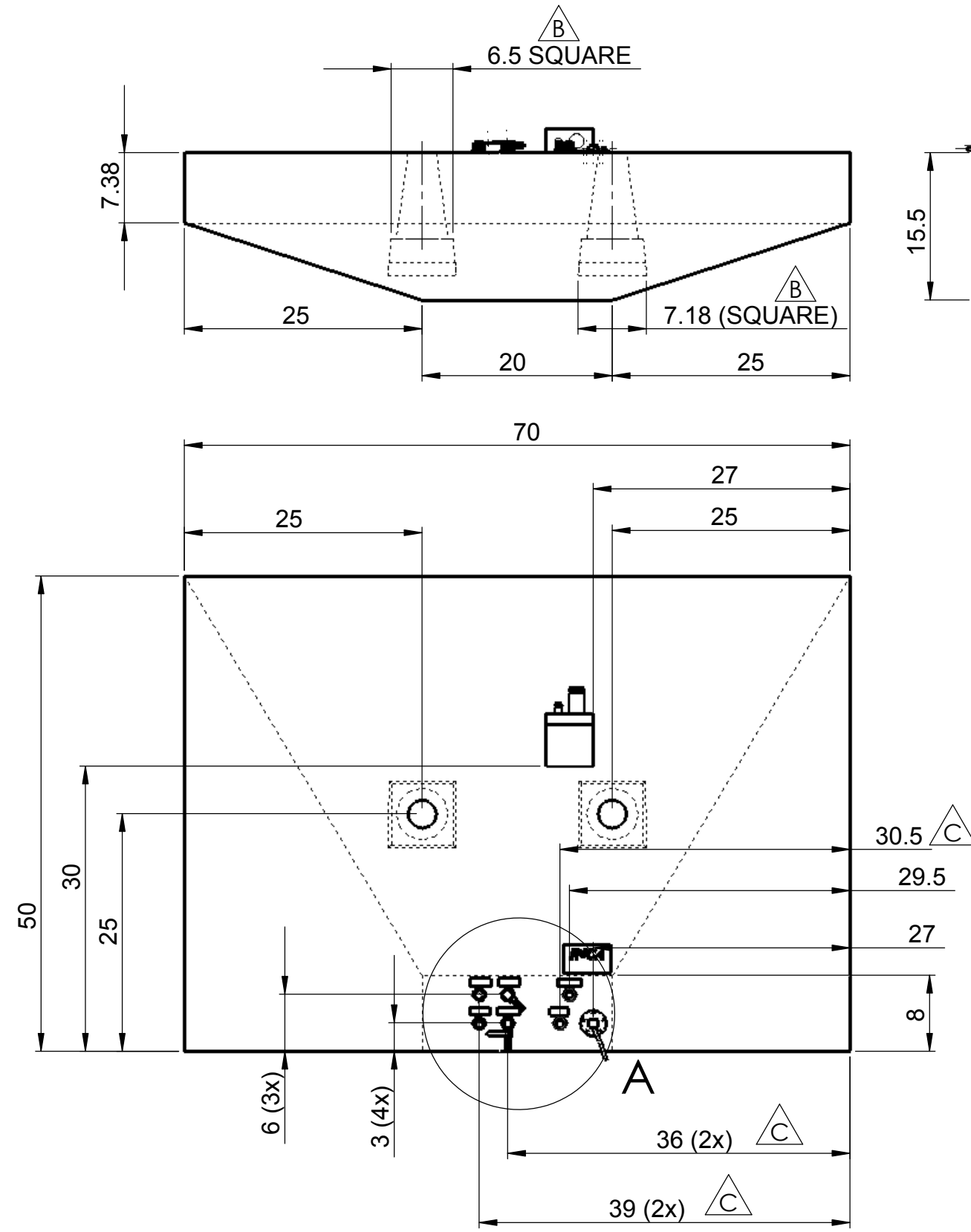


REV.	DATE	REVISIONS DESCRIPTION	REV. BY:
△ B	10/5/05	add "pedestals" for cones	GR
△ C	2/16/06	move 5 ea. fittings: 30.5 was 31, 36 was 40.5, 39 was 42 and 43.5.	GR



MAT'L: polyethylene, crosslink, natural
WALL THICKNESS: 0.275 in. (nominal)

NOTE: PLASTIC FUEL TANKS MUST HAVE SPACE IN TANK COMPARTMENT TO EXPAND 2% FREELY IN ALL DIRECTIONS (LENGTH, WIDTH AND HEIGHT).

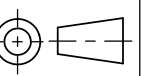
UNLESS NOTED OTHERWISE:
 1) All dimensions in inches
 2) All radii to be 3/8"

INCA
 MOLDED PRODUCTS, INC.
 INCA MOLDED PRODUCTS, INC.
 6400 LOUISIANA AVENUE
 NASHVILLE, TN 37209 USA
 (615) 350-7290

FUEL TANK, 150 GAL.
HUNTER 48

SHEET	1 of 3	
REV. DATE:	2/16/06	GR
CHECKED BY:		
DRAWN BY:	10/3/05	GR

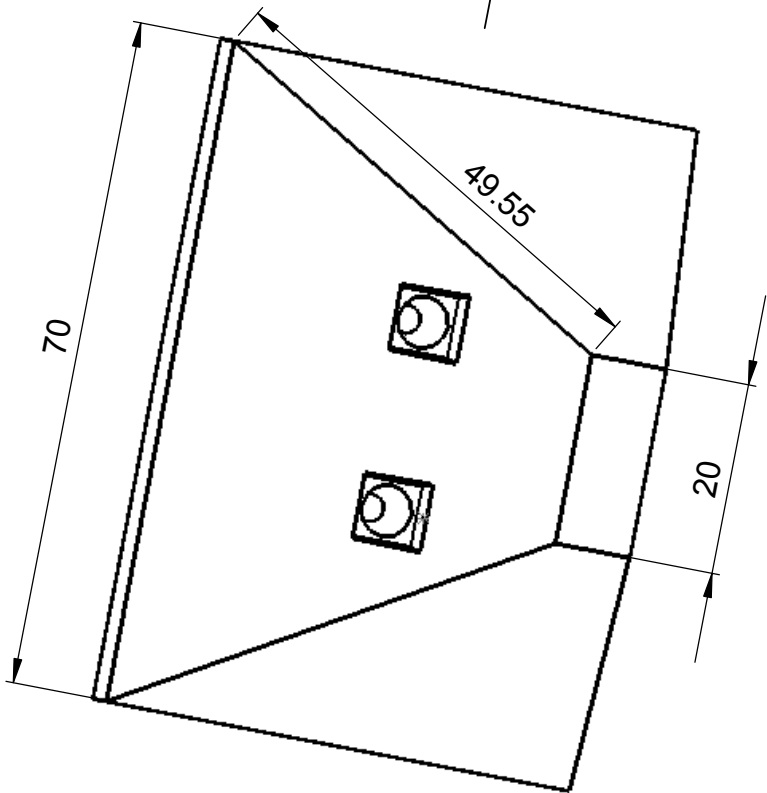
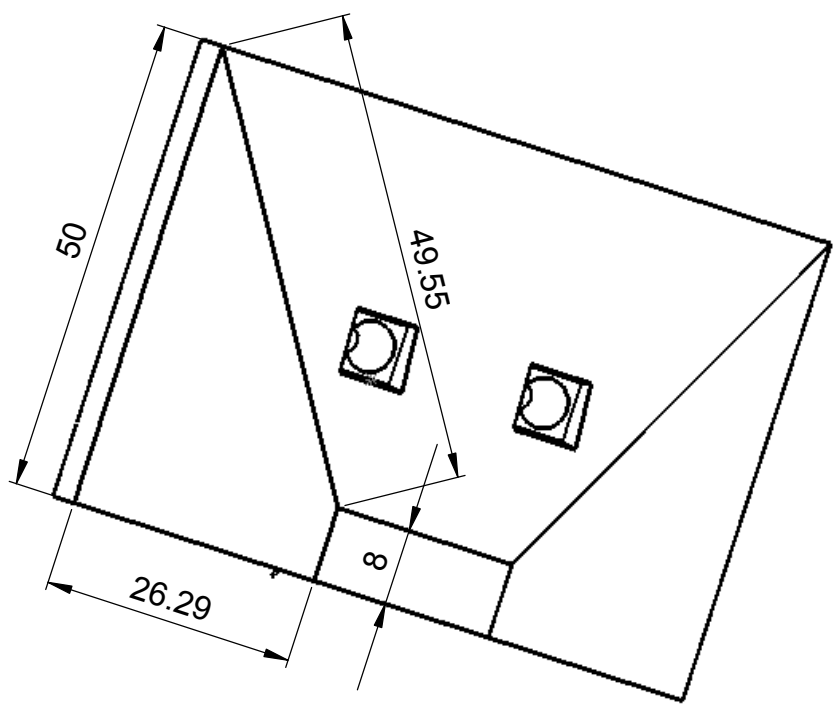
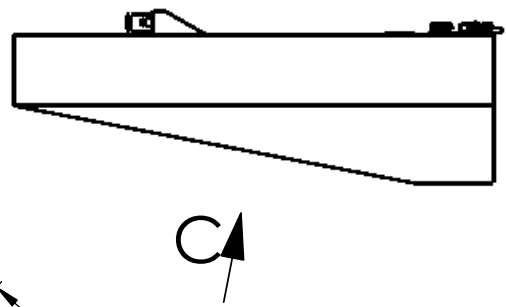
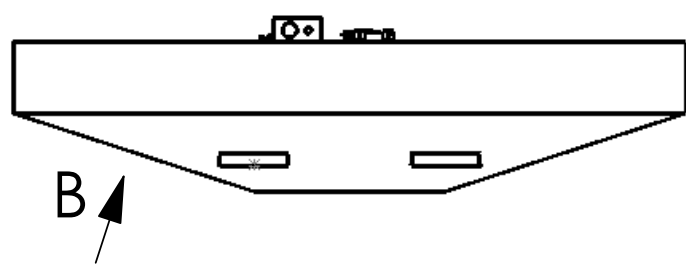
Copyright by Inca Molded Products, Inc.
 Nashville, TN 37209 USA



SCALE: REVISION:
C

FO15006

REV.	DATE	REVISIONS DESCRIPTION	REV. BY:
		SEE PAGE 1/3 FOR REVISIONS	



VIEW B

VIEW C

SHOT WEIGHT = Lbs.
 MAT'L: polyethylene, crosslink, natural
 WALL THICKNESS: 0.275 in. (nominal)

NOTE: PLASTIC FUEL TANKS MUST HAVE SPACE IN TANK COMPARTMENT TO EXPAND 2% FREELY IN ALL DIRECTIONS (LENGTH, WIDTH AND HEIGHT).

- UNLESS NOTED OTHERWISE:
- 1) All dimensions in inches
 - 2) All radii to be 3/8"
 - 3) Dimensional and locational tolerances are ±0.010 in. / in.

INCA
 MOLDED PRODUCTS, INC.
 INCA MOLDED PRODUCTS, INC.
 6400 LOUISIANA AVENUE
 NASHVILLE, TN 37209 USA
 (615) 350-7290

FUEL TANK, 150 GAL.
HUNTER 48

SHEET	2 of 3	
REV. DATE:	2/16/06	GR
CHECKED BY:		
DRAWN BY:	10/3/05	GR

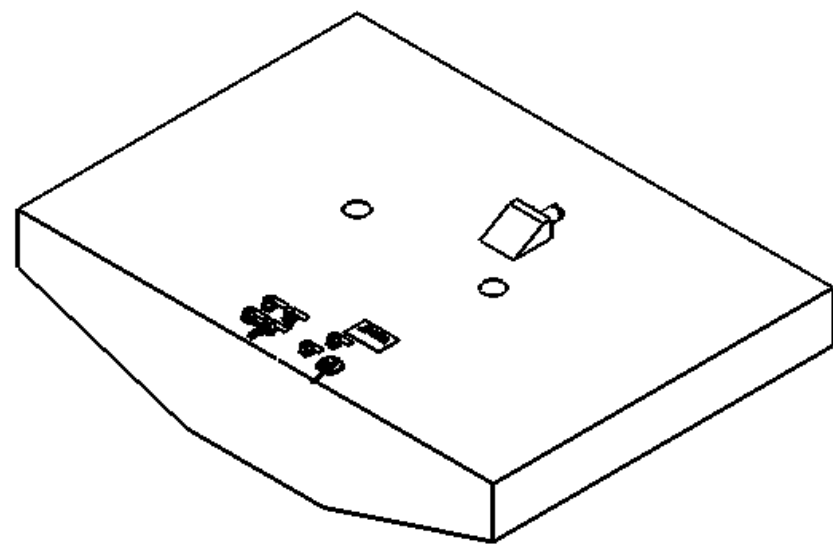
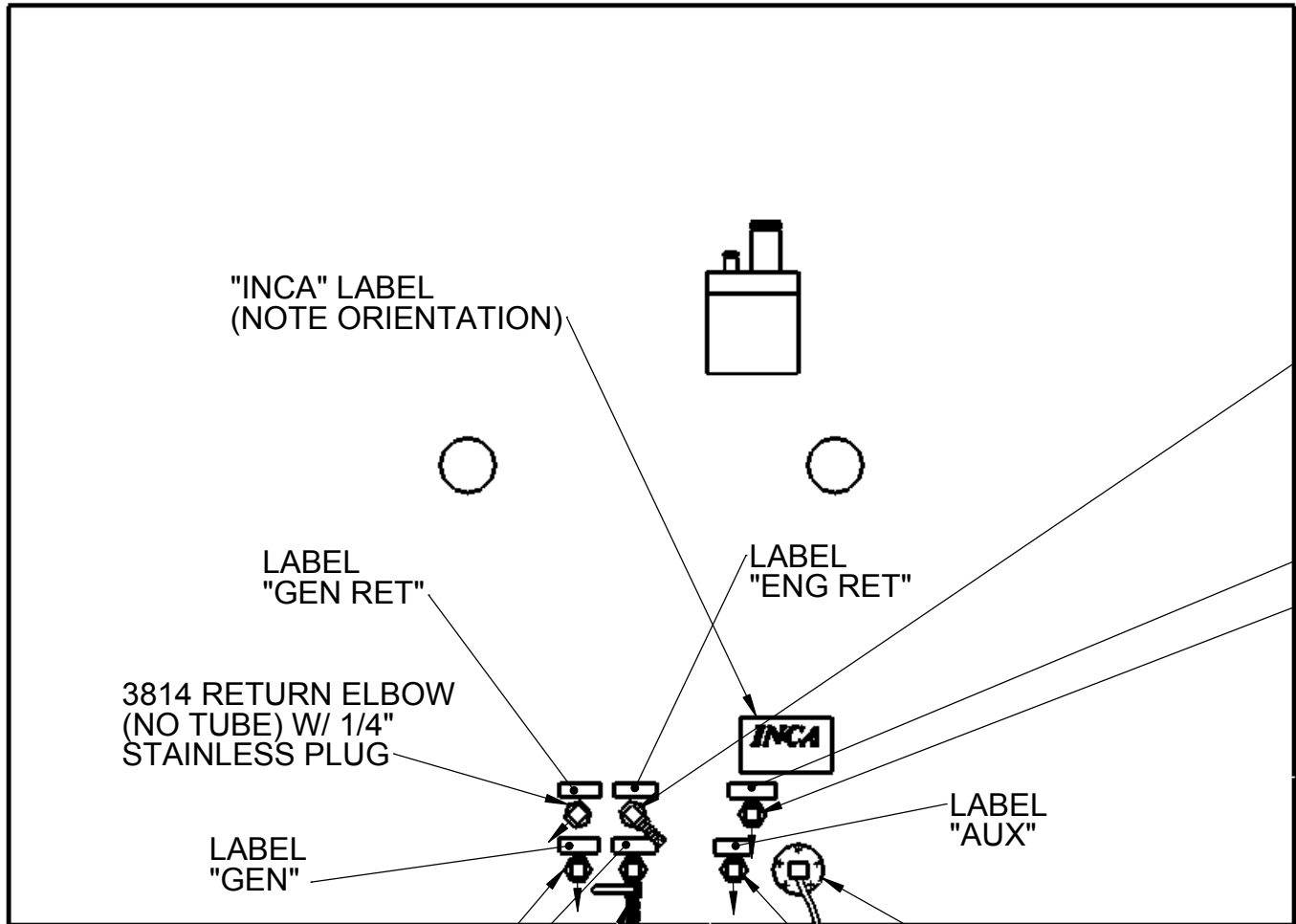
Copyright by Inca Molded Products, Inc.
 Nashville, TN 37209 USA

SCALE:

REVISION:
C

FO15006

		REVISIONS	REV. BY:
REV.	DATE	DESCRIPTION	
		SEE PAGE 1/3 FOR REVISIONS	



3838 RETURN ELBOW
(NO TUBE) W/
5/16" HOSE BARB

LABEL
"AUX RET"
3814 RETURN ELBOW
(NO TUBE) W/ 1/4"
STAINLESS PLUG

3814 x 13" HUNTER PICKUP
(ANGLE CUT NO SCREEN)
W/ 1/4" STAINLESS PLUG

LABEL
"ENGINE"

3838 19" FLEXIBLE PICKUP
3/8" SOV W/ 5/16" HOSE BARB

3814 x 13" HUNTER PICKUP
(ANGLE CUT NO SCREEN)
W/ 1/4" STAINLESS PLUG

WEMA SENDER

MAT'L: polyethylene, crosslink, natural
WALL THICKNESS: 0.275 in. (nominal)

NOTE: PLASTIC FUEL TANKS MUST HAVE SPACE IN TANK COMPARTMENT TO EXPAND 2% FREELY IN ALL DIRECTIONS (LENGTH, WIDTH AND HEIGHT).

UNLESS NOTED OTHERWISE:
1) All dimensions in inches
2) All radii to be 3/8"

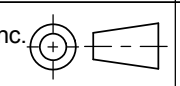
INCA
MOLDED PRODUCTS, INC.

INCA MOLDED PRODUCTS, INC.
6400 LOUISIANA AVENUE
NASHVILLE, TN 37209 USA
(615) 350-7290

**FUEL TANK, 150 GAL.
ASSEMBLY**
HUNTER 48

SHEET	3 of 3	
REV. DATE:	2/16/06	GR
CHECKED BY:		
DRAWN BY:	10/3/05	GR

Copyright by Inca Molded Products, Inc.
Nashville, TN 37209 USA



SCALE: REVISION:
C

FO15006