

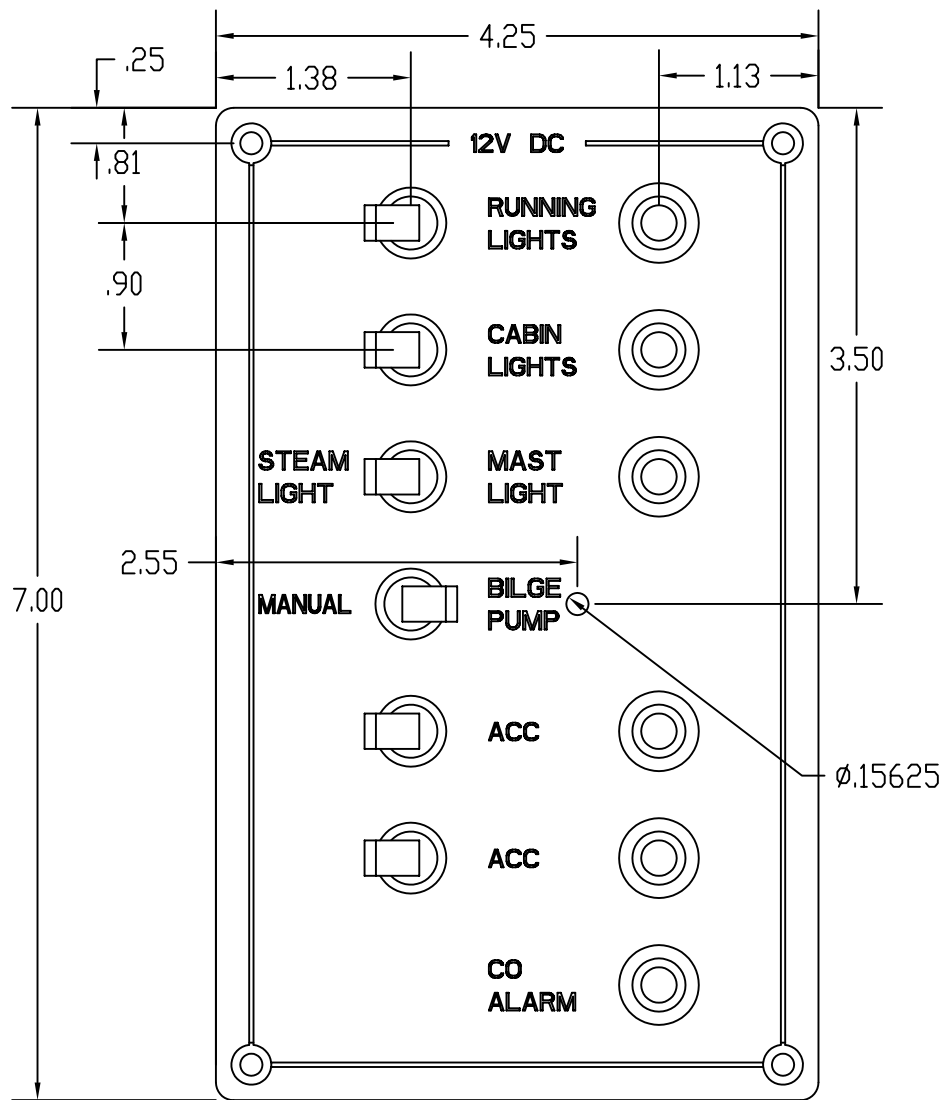
25
SCHEMATICS

2/6/2008

INDEX

PAGE

3. *DC Panel*
4. *DC Panel Schematic*
5. *DC Main Breaker Panel*
6. *Deck Harness*
7. *Deck Harness Wire List*
8. *Option Kit List*
9. *High Water Alarm Schematic*



SYMBOL	REVISIONS	DATE	ENG
A	-Delete bottom toggle switch -Add text CO ALARM and 12V DC	3/17/2003	JLK
B	ADD INDICATOR LIGHT FOR BILGE PUMP UPDATE RESET SIZES	11/3/2004	JLK
C	DELETE BILGE RESET - FOR H25 MODEL ONLY	11/3/2004	JLK

240/260 DC PANEL

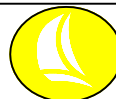
NOTES: SCALE=1.000

1. MATERIAL: 3/32" ALUMINUM
2. FINISH: BLACK MATTE
3. TEXT: WHITE ROMAN
4. ALL DIMENSIONS ARE INCHES AND DEGREES
5. BREAK AND DEBURR ALL EDGES
6. NEGATIVE BUS BAR MINIMUM OF 5 SCREWS
NOTE: BUS NOT NEEDED FOR H25 MODEL
7. QUANTITY= 1 PER BOAT
8. THIS DRAWING REPLACES DWG# 26050007

RESET BREAKER LIST -

- RUNNING LIGHTS - 5 AMP
- CABIN LIGHTS - 10 AMP
- MAST/STEAM - 5 AMP
- BILGE PUMP - 5 AMP
- ACC - 5 AMP
- CO ALARM - 5 AMP

PROPRIETARY INFORMATION THIS DRAWING CONTAINS INFORMATION FOR WHICH HUNTER MARINE CORPORATION HAS PROPRIETARY RIGHTS

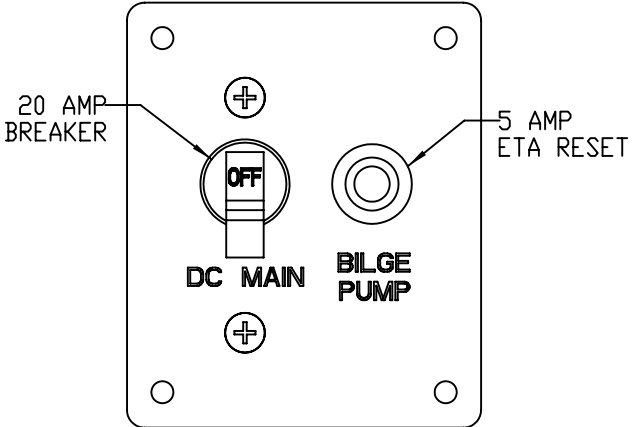
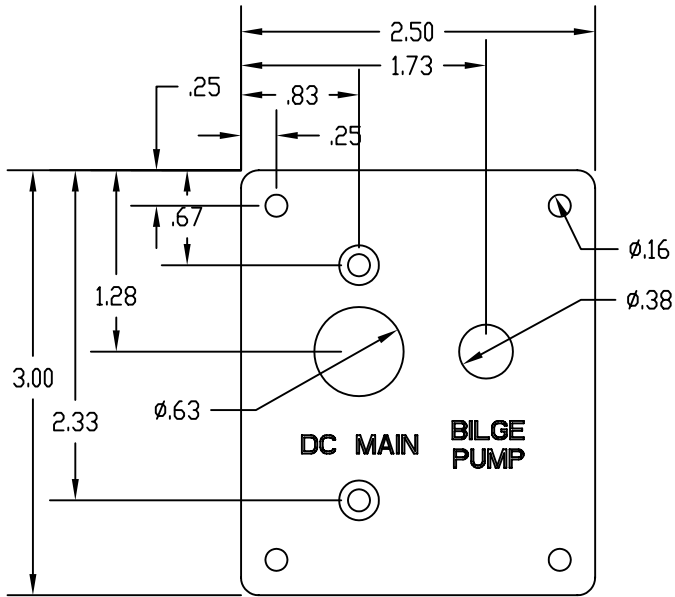


H U N T E R G E N

DRAWING TITLE:
240/260 DC PANEL


DRAWN BY: <i>JLK</i>	DATE: <i>17-Mar-03</i>	SHEET <i>1</i>	OF <i>1</i>
SCALE: <i>1.000</i>	HUNTER PART NO. <i>TBD</i>	REVISION <i>-</i>	DRAW # <i>25 DC PANEL</i>

SYMBOL	REVISIONS	DATE	ENG



DC MAIN BREAKER PANEL
 NOTES: SCALE=1.000
 1. MATERIAL: 3/32" ALUMINUM
 2. FINISH: BLACK MATTE
 3. TEXT: WHITE ROMAN
 4. ALL DIMENSIONS ARE INCHES AND DEGREES
 5. BREAK AND DEBURR ALL EDGES
 6. ADD 12GA TAN JUMPER WIRE FROM LINE SIDE OF BREAKER TO RESET
 7. QUANTITY= 1 PER BOAT

PROPRIETARY INFORMATION THIS DRAWING CONTAINS INFORMATION FOR WHICH HUNTER MARINE CORPORATION HAS PROPRIETARY RIGHTS



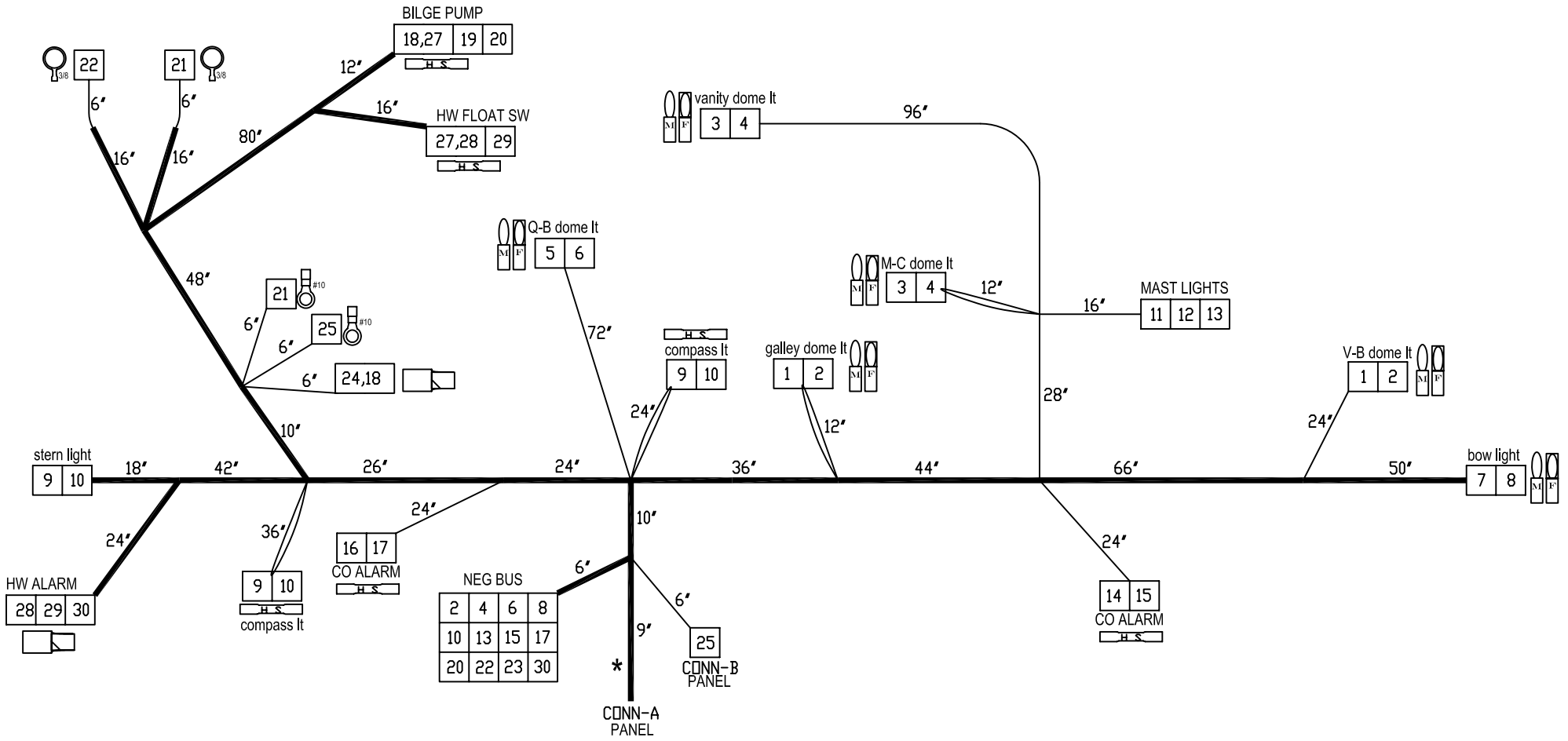
H U N T E R 25

DRAWING TITLE:
DC MAIN BREAKER PANEL

DRAWN BY: *JLK* DATE: *03-Nov-04* SHEET *1* OF *1*

SCALE: *1.000* HUNTER PART NO. *TBD* REVISION *-* DRAW # *25 DC MAIN PANEL*

CHECKED



* = SPLICE #26 TO #1 AND #3 @ 3"

— = CONDUIT

— H.S. — BARREL

⊙ #10 RING

⊙ 1/4" RING

⊙ 5/16" RING

⊙ 3/8 RING

□ 1/4 SLIDE

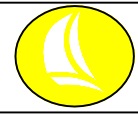
◼ 1/4 SLIDE W/PIGGYBACK

⊙ LIGHT CONNECTORS
blue wires bullet recept.
yellow wires bullet plug



CONN-B = POWERPOLE, PP75
RED HOUSING

PROPRIETARY INFORMATION THIS DRAWING CONTAINS INFORMATION FOR WHICH HUNTER MARINE CORPORATION HAS PROPRIETARY RIGHTS.



HUNTER *h25*

DRAWING TITLE:

ELECTRICAL HARNESS

DRAWN BY: <i>JLK</i>	DATE: <i>28-June-06</i>	SHEET <i>1</i>	OF <i>1</i>
-------------------------	----------------------------	-------------------	----------------

SCALE: <i>0.045</i>	HUNTER PART NO. <i>TBD</i>	REVISION <i>F</i>	DRAW # <i>drawing number</i>
------------------------	-------------------------------	----------------------	---------------------------------

HUNTER 25 DC DECK HARNESS				6/28/2006
WIRE#	GAUGE	COLOR	LENGTH	FUNCTION
1	16	BLUE	210"	GALLEY&FWD LIGHTS
2	16	YELLOW	210"	GALLEY&FWD LIGHTS NEG.
3	16	BLUE	244"	M-C&PORT LIGHTS
4	16	YELLOW	244"	M-C&PORT LIGHTS NEG.
5	16	BLUE	91"	AFT CABIN LIGHTS
6	16	YELLOW	88"	AFT CABIN LIGHTS NEG.
7	16	GRAY/WHITE	215"	BOW LIGHT
8	16	YELLOW	212"	BOW LIGHT NEG.
9	16	GRAY/YELLOW	249"	STERN LT
10	16	YELLOW	246"	STERN LT NEG.
11	16	GRAY/RED	143"	ANCHOR LT
12	16	GRAY/GREEN	143"	STEAMING LT
13	16	YELLOW	140"	MAST LTS NEG.
14	16	RED/BLUE	123"	FWD CO ALARM
15	16	YELLOW	120"	FWD CO ALARM NEG.
16	16	RED/BLUE	67"	AFT CO ALARM
17	16	YELLOW	64"	AFT CO ALARM NEG.
18	12	BROWN/ORG	146"	BILGE PUMP(AUTO)
19	12	BROWN/RED	219"	BILGE PUMP(MANUAL)
20	12	YELLOW	216"	BILGE PUMP NEG.
21	8	RED	76"	PANEL POWER
22	8	YELLOW	146"	PANEL NEG.
23	16	YELLOW	15"	BILGE PUMP INDICATOR NEG.
24	12	TAN	85"	BILGE PUMP POWER
25	8	ORANGE/RED	82"	DC PANEL
26	16	BLUE	3"	FWD CABIN LIGHTS
27	16	BROWN/ORG	3"	HW ALARM POWER
28	16	BROWN/ORG	220"	HW ALARM POWER2
29	16	BROWN/RED	220"	HW ALARM INDICATOR
30	16	YELLOW	132"	HW ALARM NEG.

**25
OPTION KIT**

REVISION
A: 12/3/04
B: 12/16/04
C:

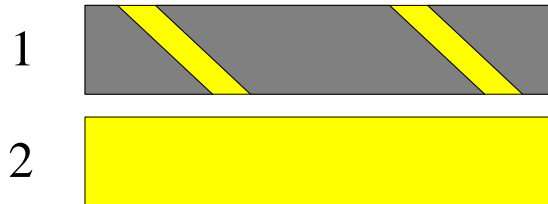
COOLER OPTION KIT



NUMBER	SIZE	COLOR	LENGTH	DESCRIPTION
1	12 GA	RED/BLACK	15'	COOLER
2	12 GA	YELLOW	15'	COOLER NEG

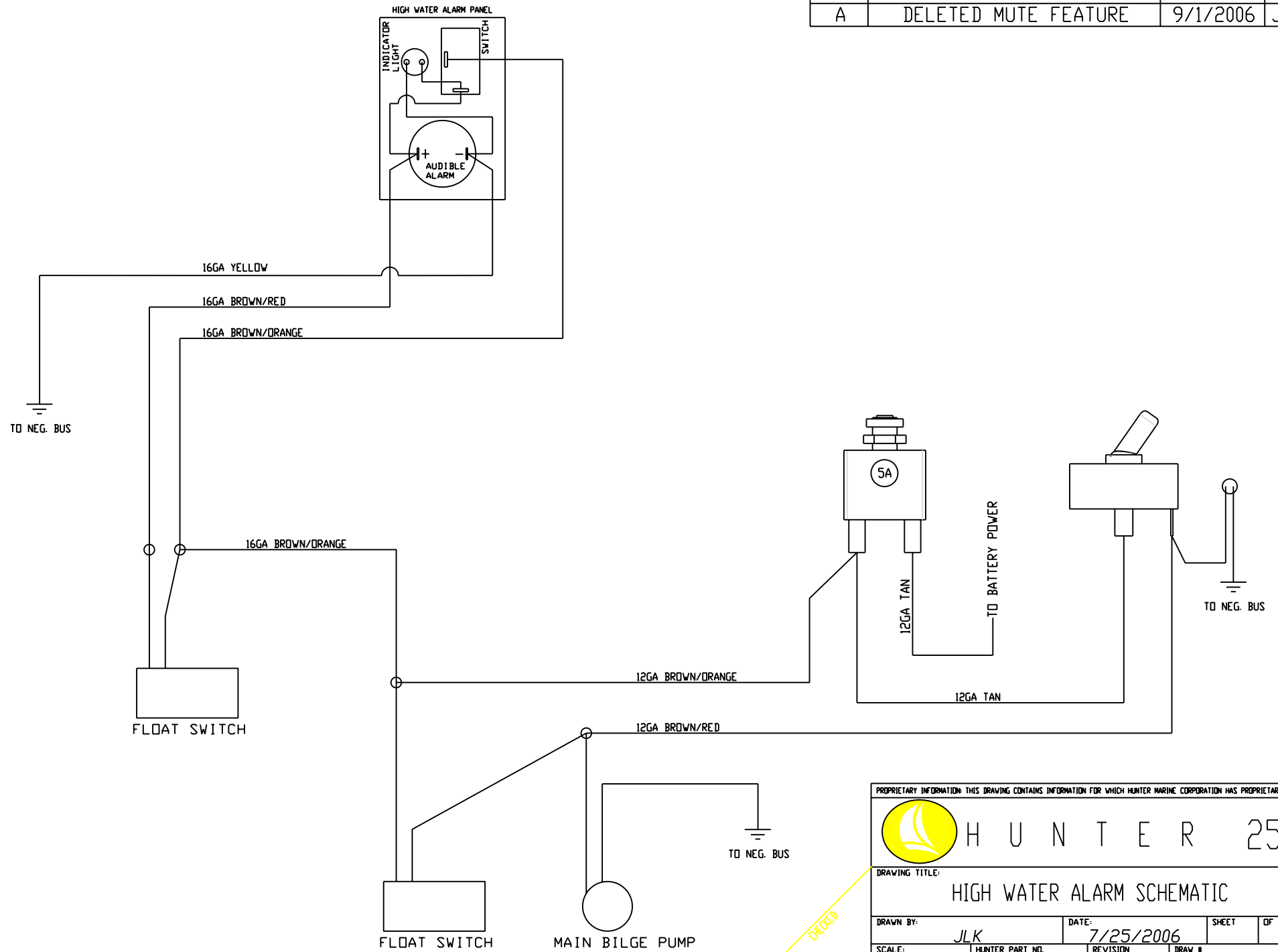
COMPASS OPTION KIT

ADD CONDUIT TO ENTIRE LENGTH
-6" AT EACH END

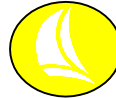


NUMBER	SIZE	COLOR	LENGTH	DESCRIPTION
1	16 GA	GRAY/YELLOW	5'	COMPASS LIGHT
2	16 GA	YELLOW	5'	COMPASS LIGHT NEG

SYMBOL	REVISIONS	DATE	ENG
A	DELETED MUTE FEATURE	9/1/2006	JLK



PROPRIETARY INFORMATION: THIS DRAWING CONTAINS INFORMATION FOR WHICH HUNTER MARINE CORPORATION HAS PROPRIETARY RIGHTS.



H U N T E R 25

DRAWING TITLE: HIGH WATER ALARM SCHEMATIC

DRAWN BY: JLK DATE: 7/25/2006 SHEET OF

SCALE: HUNTER PART NO. REVISION DRAW #

CHECKED