

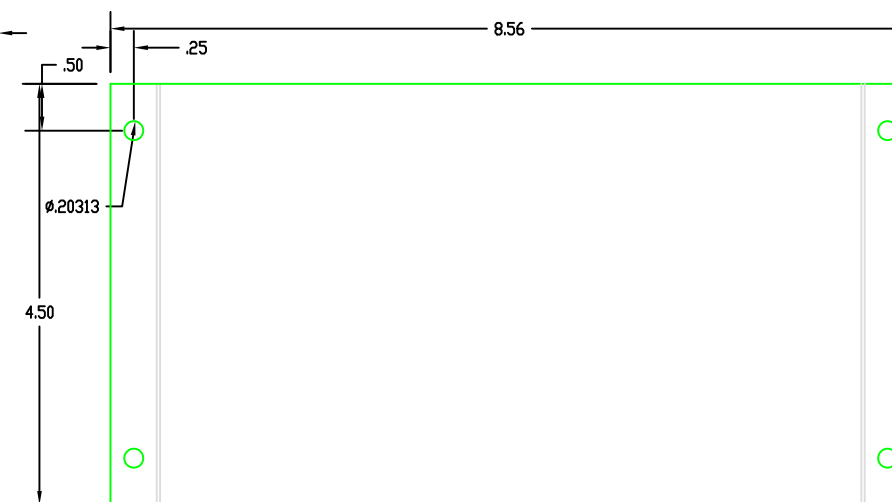
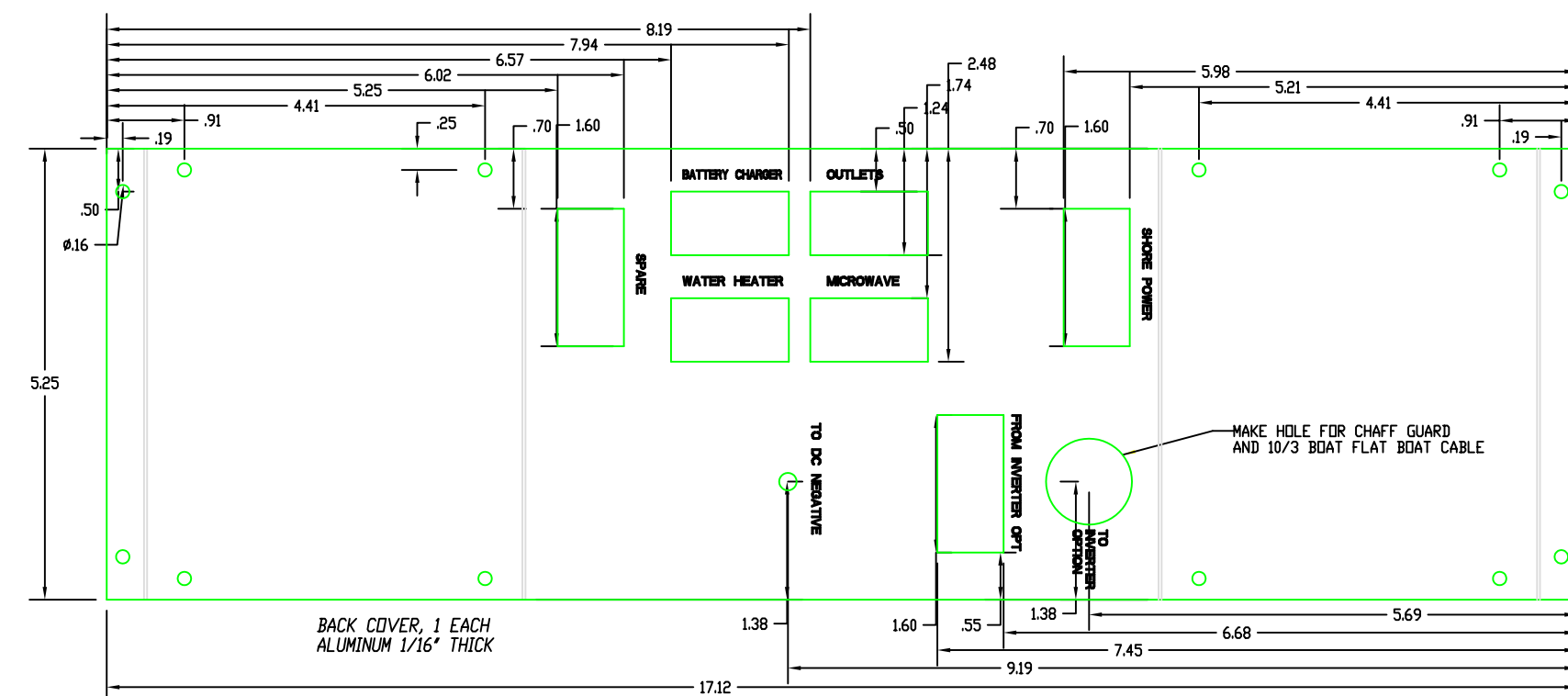
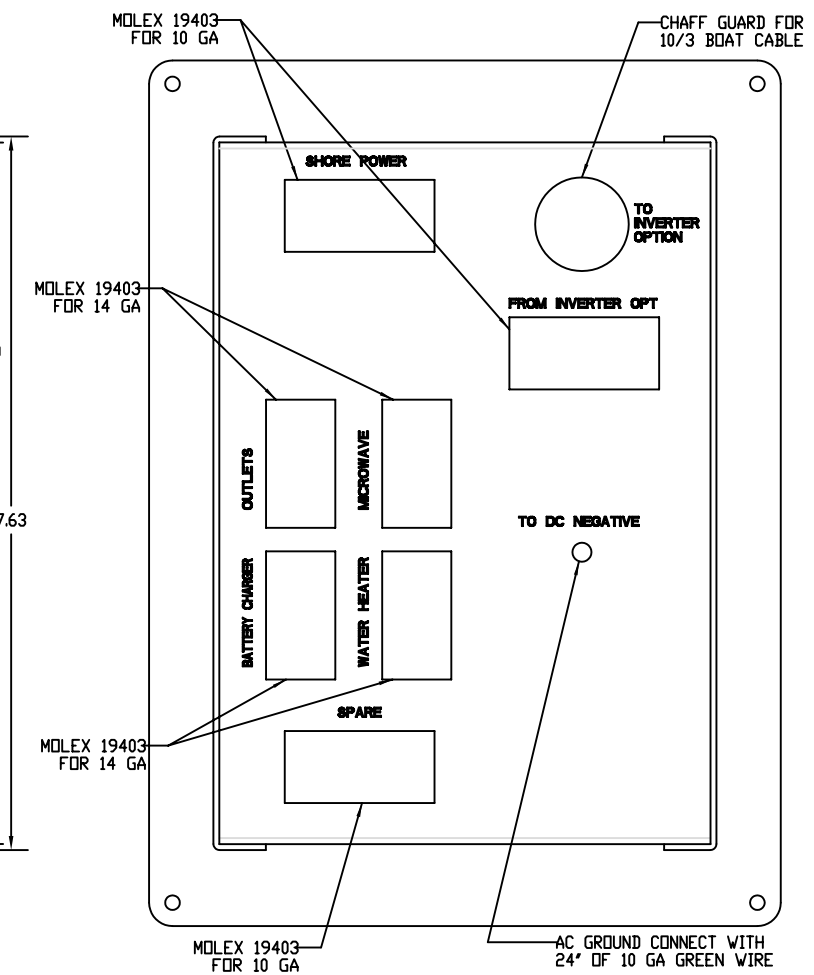
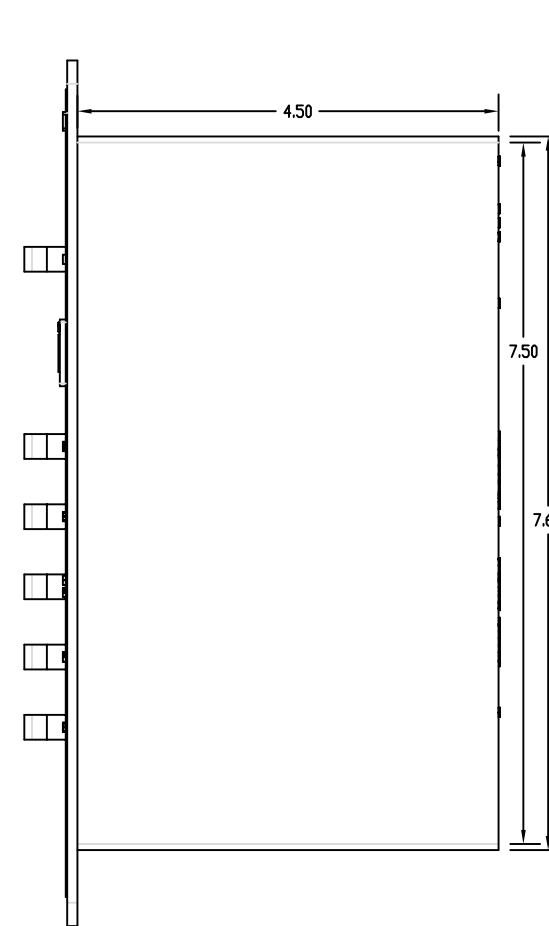
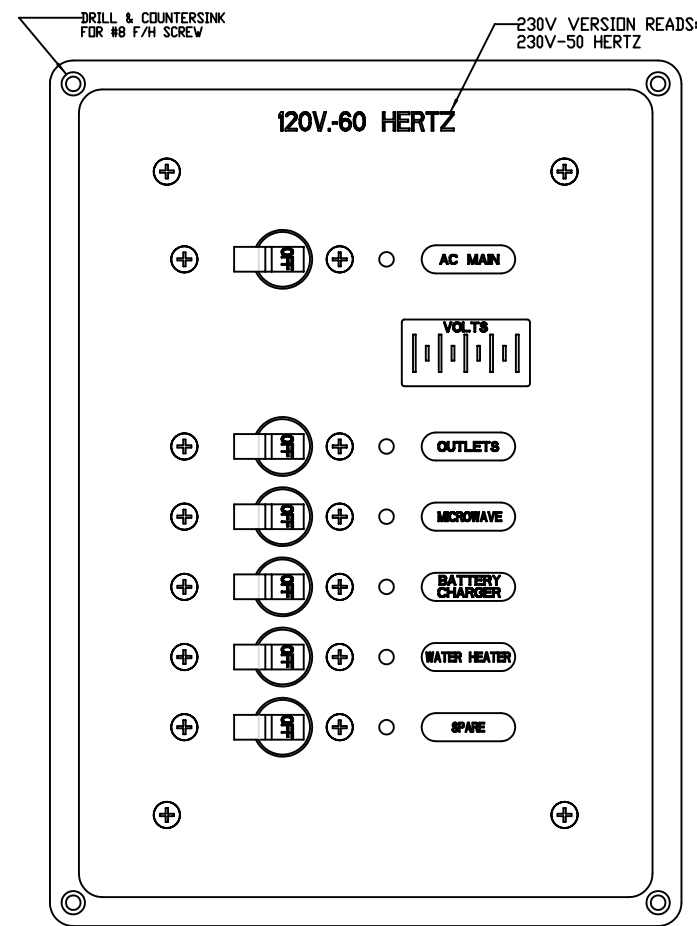
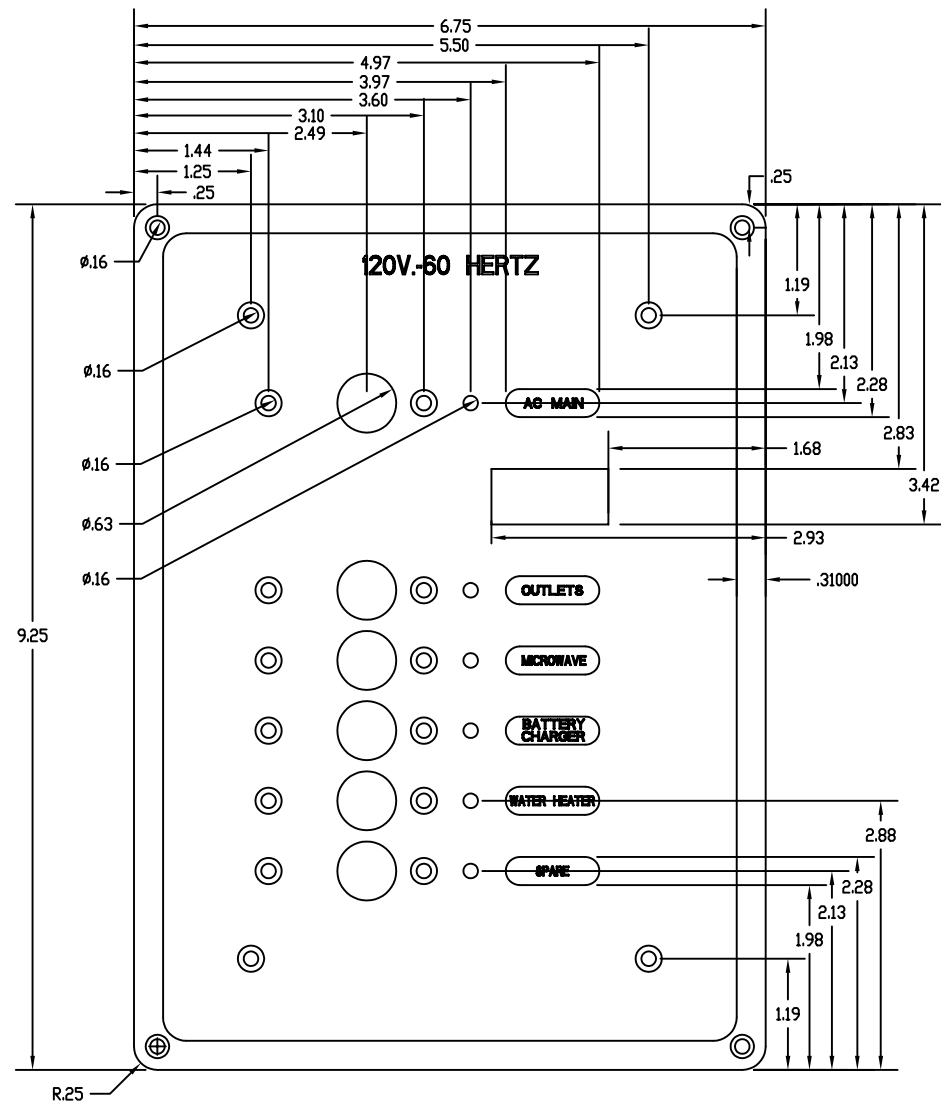
31
SCHEMATICS

12/1/2005

INDEX

PAGE

3. *AC Panel*
4. *230V AC Panel*
5. *AC Panel Schematic*
6. *230v AC Panel Schematic*
7. *AC Wire Kit*
8. *Stage Wire Kits*
9. *TV-DVD Option Kit*
10. *DC Panel*
11. *DC Panel Schematic*
12. *DC Panel Connectors*
14. *Hull Harness*
15. *Hull Harness Wire List*
16. *Hull Harness Connectors*
17. *Deck Harness*
18. *Deck Harness Wire List*
19. *Deck Harness Connectors*
20. *Auto Fire System Schematic*
21. *High Water Pump System Schematic*
22. *Engine Panel Area Schematic*



SIDE BACK COVER, 2 EACH
ALUMINUM 1/16" THICK

- BREAKER LIST TO BE SUPPLIED WITH PANEL FOR 120V-60 HERTZ VERSION:**
- AC MAIN 30 AMP
 - OUTLETS 15 AMP
 - MICROWAVE 15 AMP
 - BATTERY CHARGER 15 AMP
 - WATER HEATER 15 AMP
 - SPARE 25 AMP
- BREAKER LIST TO BE SUPPLIED WITH PANEL FOR 230V-50 HERTZ VERSION:**
- AC MAIN 15 AMP
 - OUTLETS 10 AMP
 - MICROWAVE 10 AMP
 - BATTERY CHARGER 10 AMP
 - WATER HEATER 10 AMP
 - SPARE 15 AMP

- NOTE:**
1. PANEL MATERIAL - 1/8" ALUMINUM
 2. PANEL COLOR&FINISH - FLAT CARBON BLACK WITH GLOSSY BLACK BORDER
 3. BACK LIGHTING COLOR - BLUE
 4. AC MAIN INDICATOR - RED LED
 5. BREAKER INDICATOR LIGHTS - RED LED
 6. BREAKER HANDLE COLOR - BLACK
 6. SEE ELECTRICAL SCHEMATIC FOR BACKSIDE

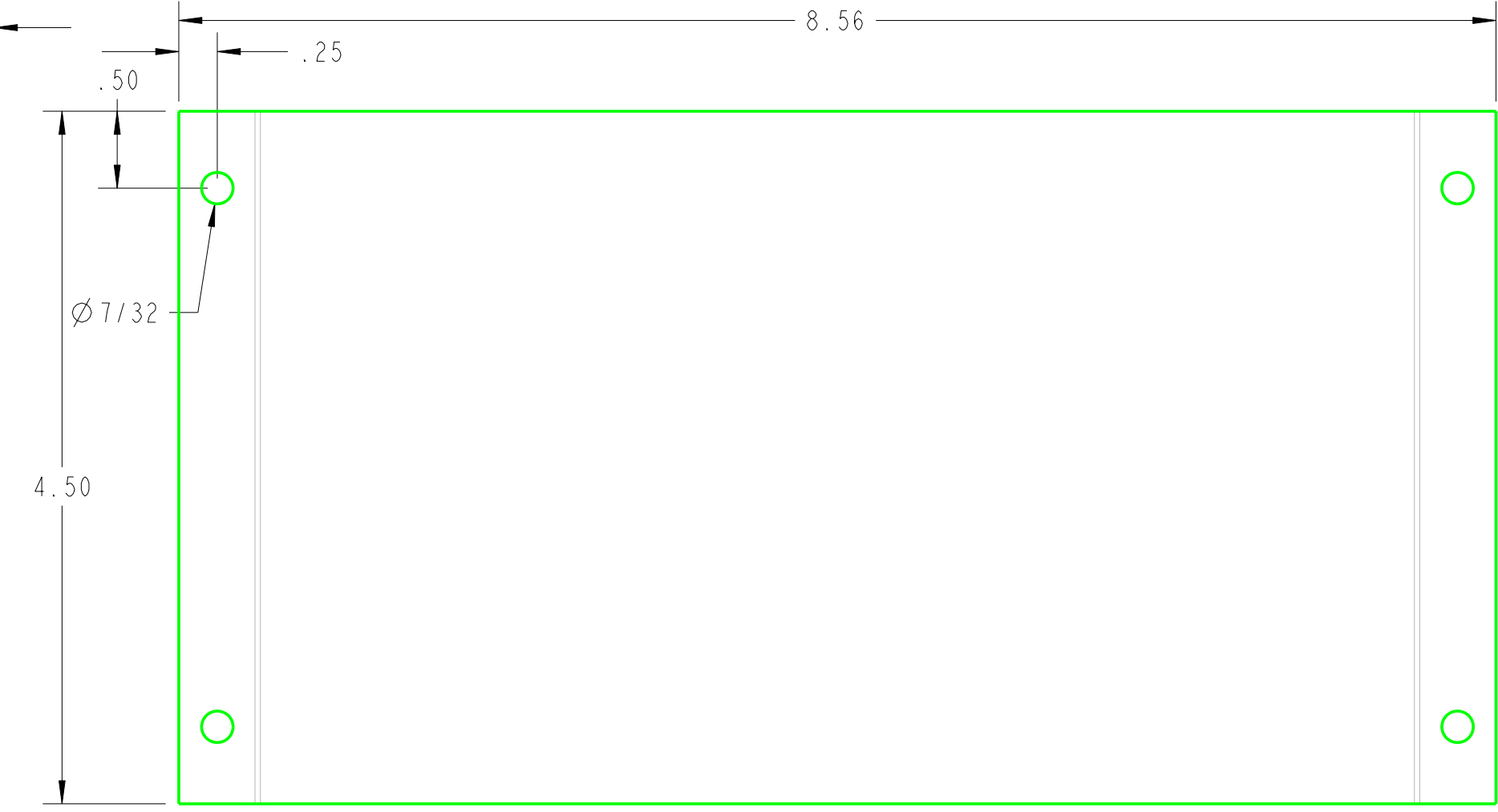
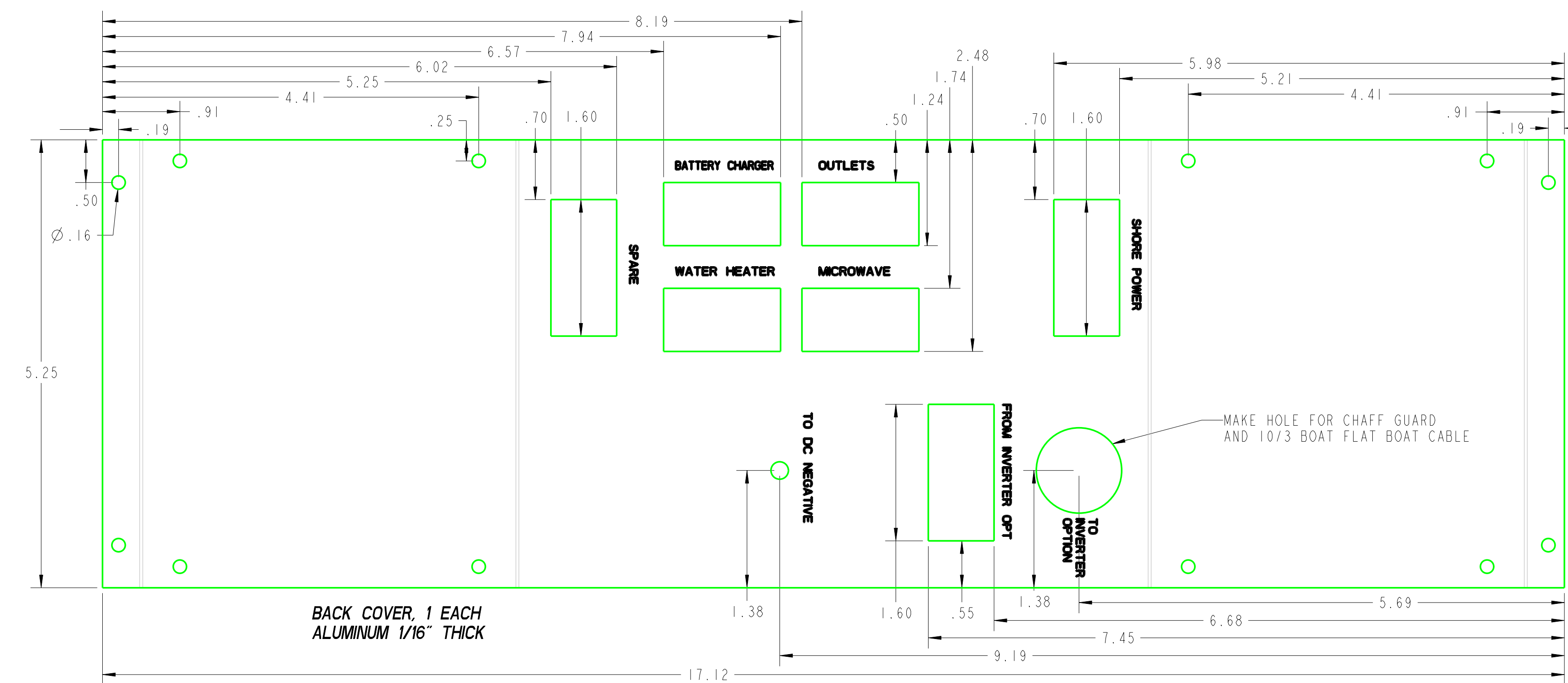
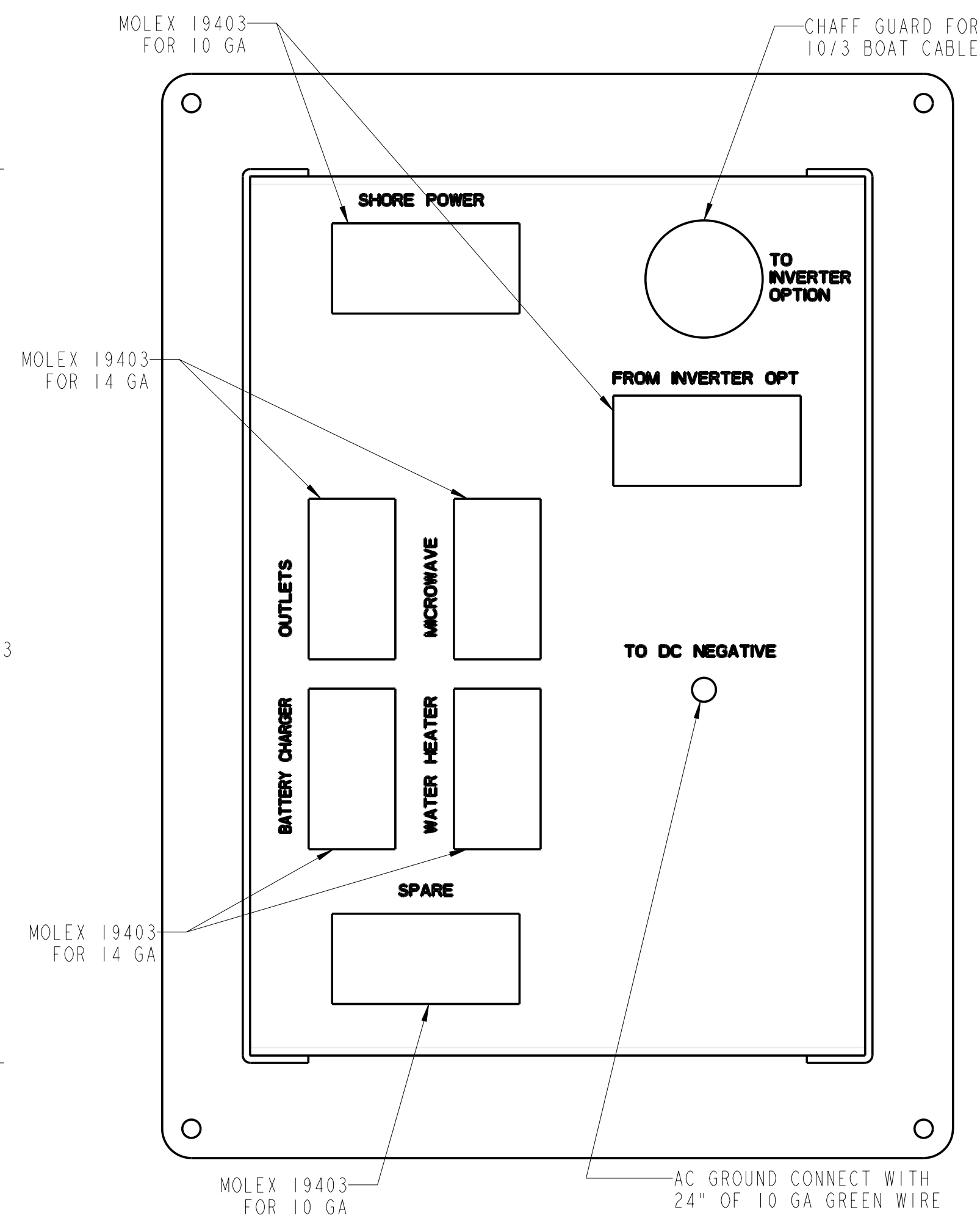
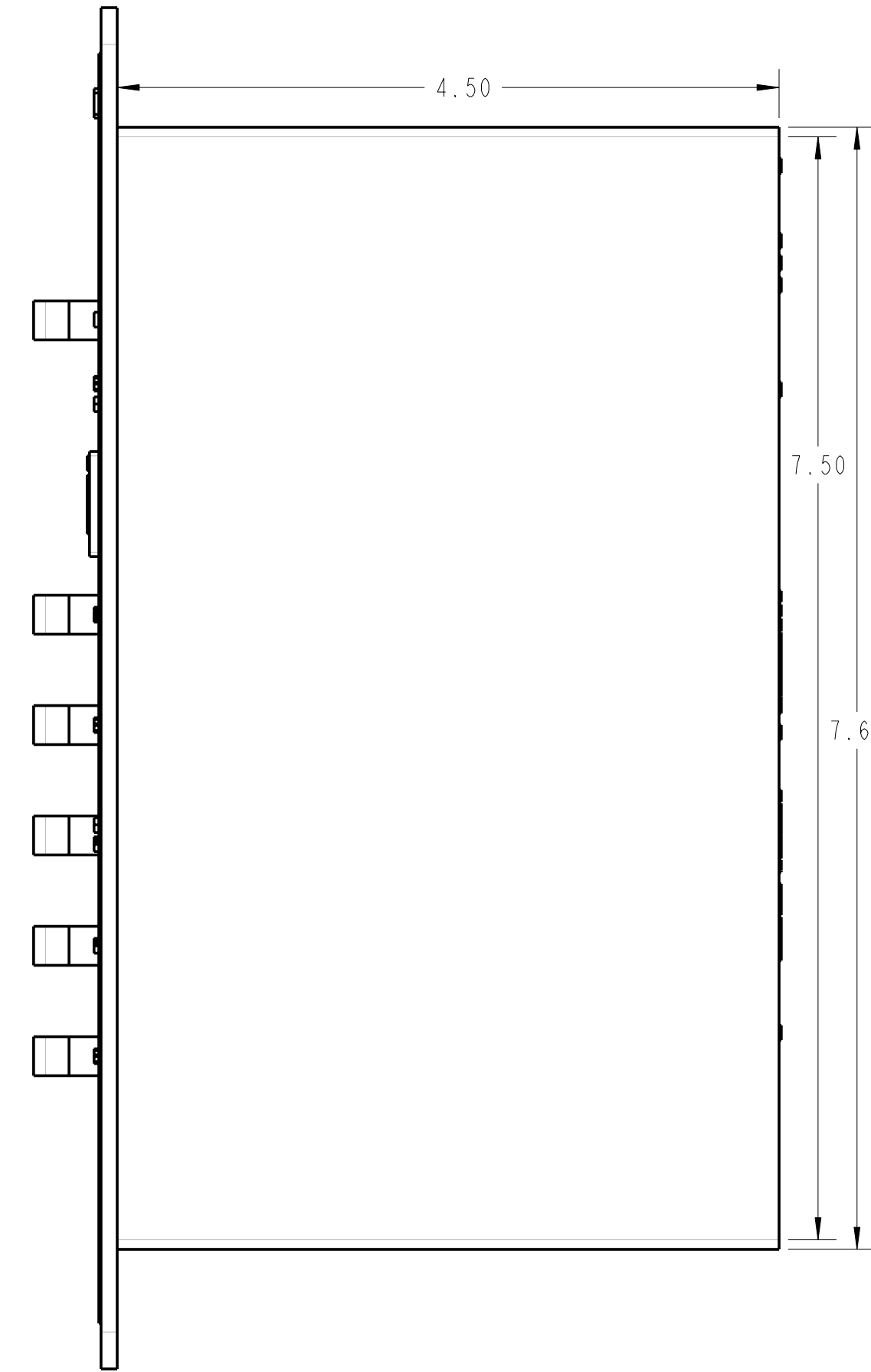
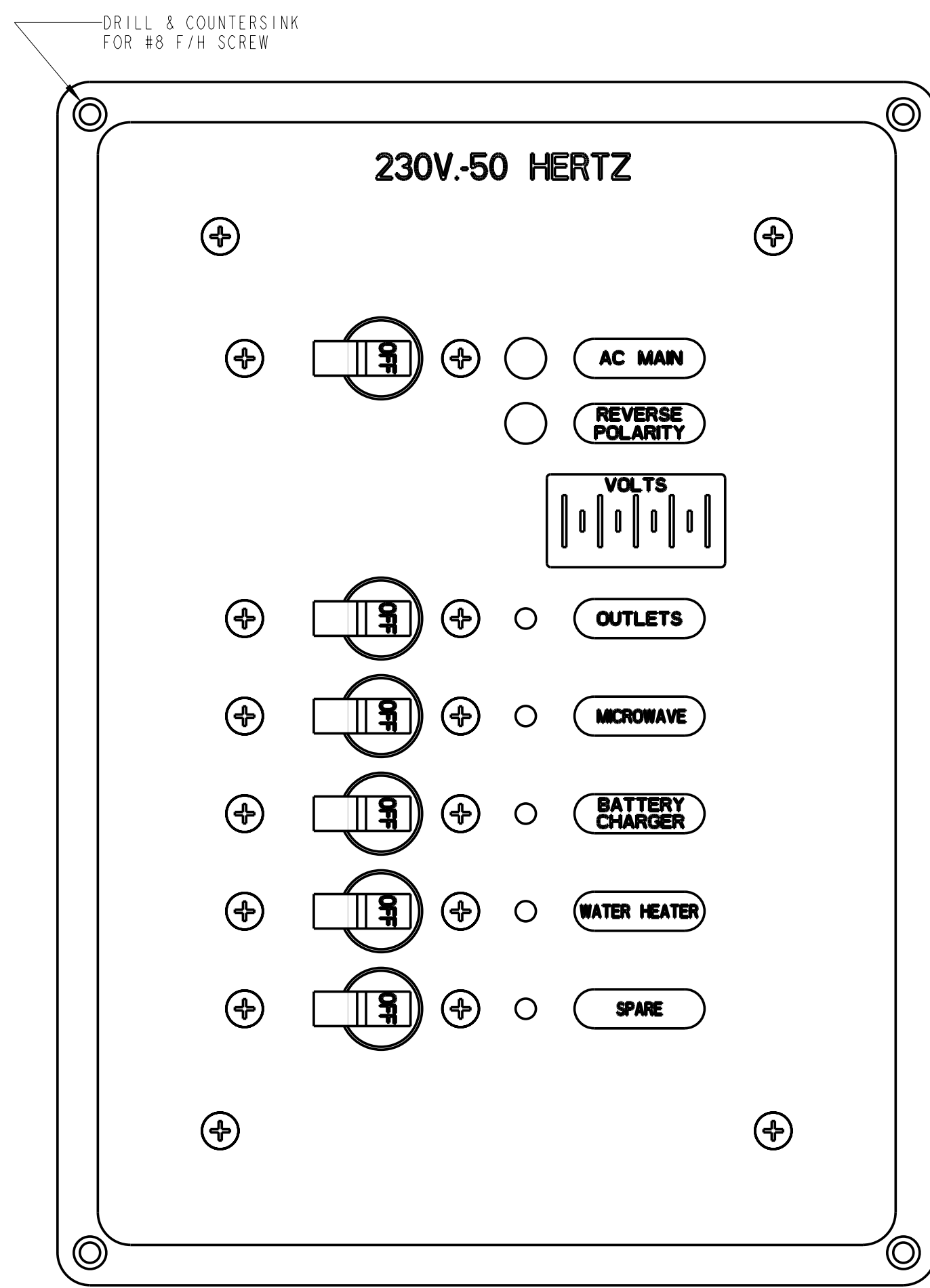
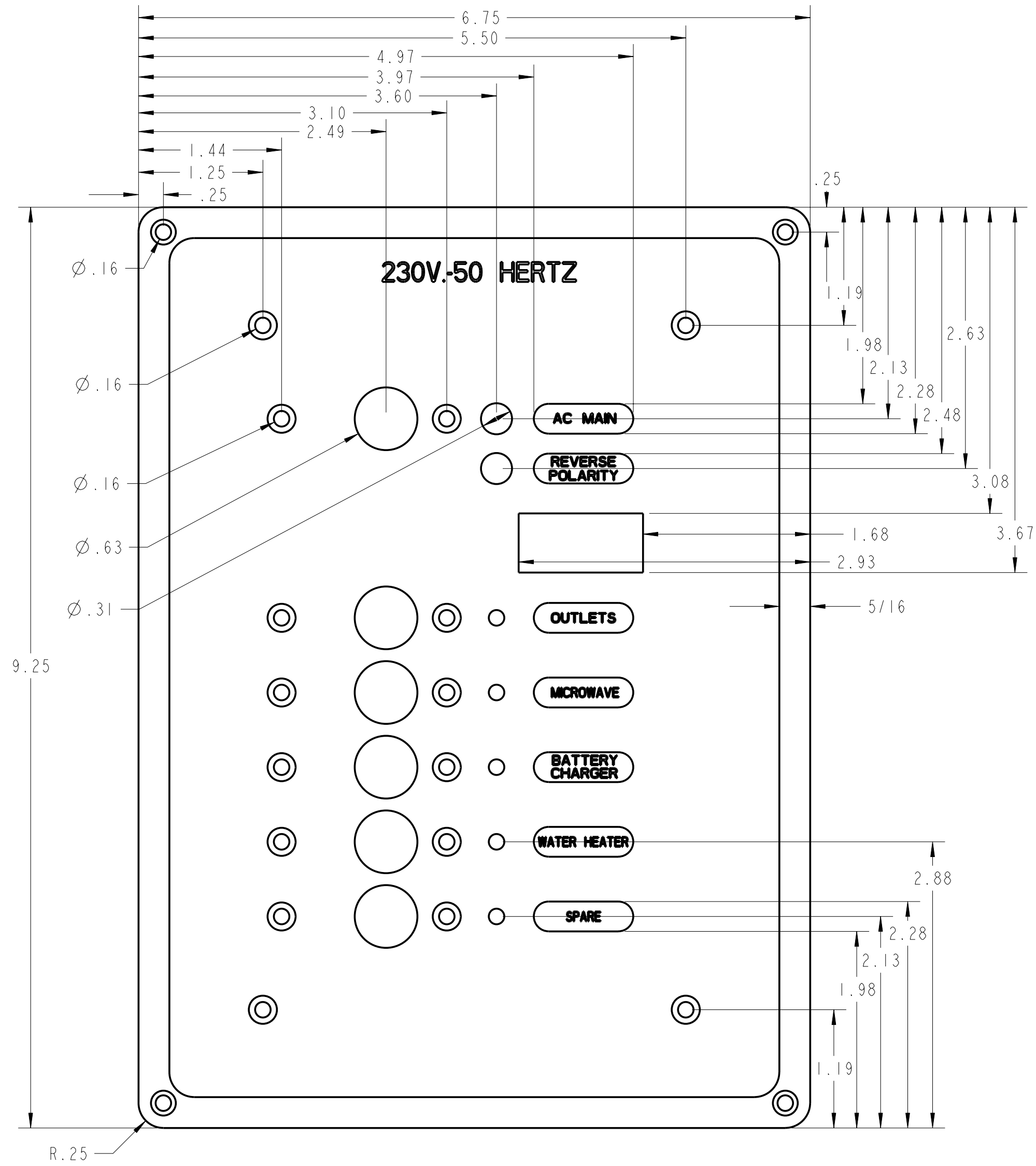
PROPRIETARY INFORMATION THIS DRAWING CONTAINS INFORMATION FOR WHICH HUNTER ENGINEERING HAS PROPRIETARY RIGHTS

HUNTER 31

DRAWING TITLE: **PANEL, 120/230VAC**

DRAWN BY: JLK	DATE: 12-16-04	SHEET: 1	OF: 1
SCALE: 1:00	HUNTER PART NO: 120	REVISION: -	REVISED BY: JLK

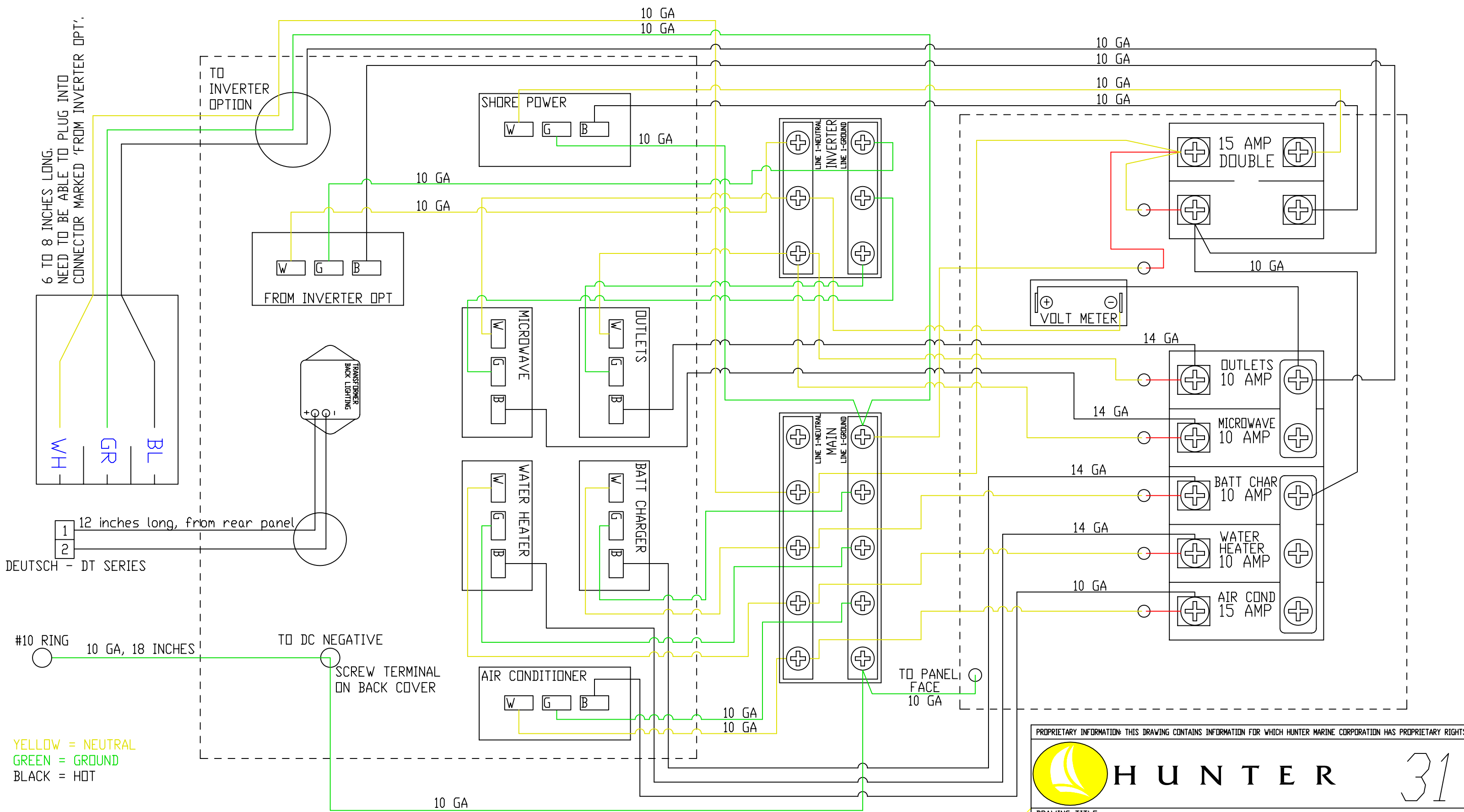
PANEL AC H30 V2



SIDE BACK COVER, 2 EACH ALUMINUM 1/16" THICK

- BREAKER LIST TO BE SUPPLIED WITH PANEL FOR 230V-50 HERTZ VERSION.**
- AC MAIN : 15 AMP
 - OUTLETS : 10 AMP
 - MICROWAVE : 10 AMP
 - BATTERY CHARGER : 10 AMP
 - WATER HEATER : 10 AMP
 - SPARE : 15 AMP

- NOTE:**
1. PANEL MATERIAL - 1/8" ALUMINUM
 2. PANEL COLOR&FINISH - FLAT CARBON BLACK WITH GLOSSY BLACK BORDER
 3. BACK LIGHTING COLOR - BLUE
 4. AC MAIN INDICATOR - GREEN NEON
REVERSE POLARITY - RED NEON
BREAKER INDICATOR LIGHTS - RED LED
 5. BREAKER HANDLE COLOR - BLACK
 6. SEE ELECTRICAL SCHEMATIC FOR BACKSIDE



6 TO 8 INCHES LONG.
NEED TO BE ABLE TO PLUG INTO
CONNECTOR MARKED 'FROM INVERTER OPT'.

1 12 inches long, from rear panel
2 DEUTSCH - DT SERIES

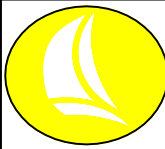
#10 RING 10 GA, 18 INCHES TO DC NEGATIVE
SCREW TERMINAL ON BACK COVER

YELLOW = NEUTRAL
GREEN = GROUND
BLACK = HOT

NOTE: BREAKER VALUES SHOWN ARE FOR 230V PANEL VERSION.
NEED PROTECTIVE CAPS FOR BATTERY CHARGER AND AIR CONDITIONER.

BREAKER LIST (230V):
BATTERY CHARGER - 10 AMPS
WATER HEATER - 10 AMPS
OUTLETS - 10 AMPS
MICROWAVE - 10 AMPS
AIR CONDITIONER - 15 AMPS

PROPRIETARY INFORMATION: THIS DRAWING CONTAINS INFORMATION FOR WHICH HUNTER MARINE CORPORATION HAS PROPRIETARY RIGHTS.



HUNTER

31

DRAWING TITLE:
AC PANEL SCHEMATIC, 230V VERSION

DRAWN BY: JLK	DATE: 25-May-05	SHEET 1	OF 1
SCALE: 1.000	HUNTER PART NO. TBD	REVISION A	DRAW # PANEL_AC_H31_230V

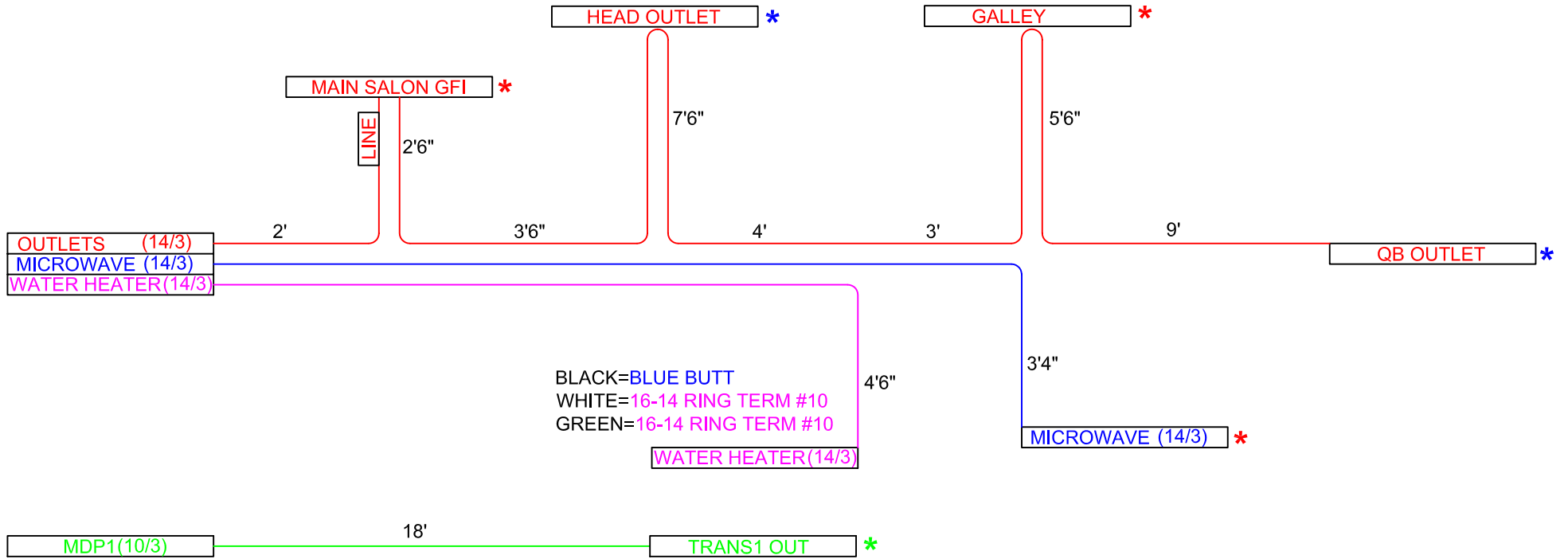
CHECKED:

- LEGEND:
- * = 16-14 CAPTIVE SPADE #8
 - * = 12-10 CAPTIVE SPADE #8
 - * = 16-14 RING TERM. #10
 - * = 12-10 RING TERM. #10
 - * = 12-10 RING TERM. 1/4"

NOTE: CONDUIT ALL HARNESSES COMPLETELY

REV.
06/16/2005

31 AC WIRES

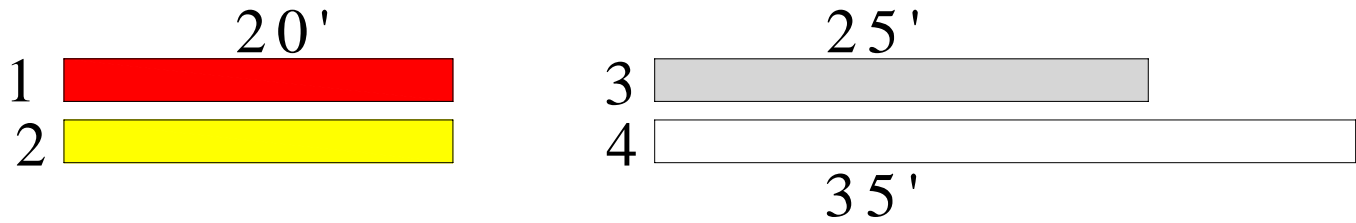


MDP1(10/3) = 18'
 OUTLETS(14/3) = 52'6"
 MICROWAVE(14/3) = 15'10"
 WATER HEATER(14/3) = 14'

STAGE 24A-MODULE P/N						
	WIRE SIZE	COLOR	LENGTH	EYE	EYE	DESCRIPTION
HOUSE BATTERY #1	1/O	RED	10'	3/8"	3/8"	BATT TO SW-HOUSE1
	1/O	YELLOW	9.5'	5/16"	3/8"	BATT TO GND-HOUSE1
YANMAR STARTER	2 GA	RED	8' 6"	5/16"	3/8"	START TO STUD-YAN
	2 GA	YELLOW	8'	3/8"	3/8"	ENGINE TO GND-YAN
GNDS	6 GA	GREEN/YELLOW	23'	1/4"	3/8"	ARCH GND
	6 GA	GREEN/YELLOW	10' 6"	1/4"	5/8"	CHAINPLATE PORT
	6 GA	GREEN/YELLOW	10' 6"	1/4"	5/8"	CHAINPLATE STBD
	10 GA	GREEN/YELLOW	20'			FUEL FILL GRD
	4 GA	GREEN/YELLOW	30"	1/4"	3/8"	MAST POST TO KEEL
STAGE 34-DECK RIGGING P/N 1013359						
	WIRE SIZE	COLOR	LENGTH	EYE	EYE	DESCRIPTION
SHORE POWER	10-3	ROMEX	15'			SP1
GNDS	6 GA	GREEN/YELLOW	8'	3/8"	1/2"	PEDESTAL GND
OPTIONS						
MODULE STAGE 24A						
	WIRE SIZE	COLOR	LENGTH	EYE	EYE	DESCRIPTION
HOUSE BATTERY #2	1/O	RED	11'	3/8"	3/8"	BATT TO SW-HOUSE2
	1/O	YELLOW	2'	3/8"	3/8"	BATT TO GND-HOUSE2
BATT. CHAR. P/N 1002840	14-3	ROMEX	7'			BATT CHARGER
INVERTER (120V)	1/O	RED	12"	3/8"	3/8"	INV TO FUSE
	1/O	RED	18"	3/8"	3/8"	FUSE TO SW
	1/O	YELLOW	18"	5/16"	3/8"	INV TO GND
	1/O	GREEN/YELLOW	18"	5/16"	1/4"	INV CASE TO GND
	10-3	ROMEX	7'			INV IN
	10-3	ROMEX	7'			INV OUT
INVERTER (230V)	1/O	RED	1'	3/8"	3/8"	FUSE TO SW
	1/O	GREEN/YELLOW	18"	5/16"	1/4"	INV CASE TO GND
	10-3	ROMEX	7'			INV IN
	10-3	ROMEX	7'			INV OUT
WINDLASS	2 GA	RED	24'	1/4"	5/16"	BREAKER TO BOX-WL
	2 GA	YELLOW	24'	3/8"	5/16"	GND TO BOX-WL
	2 GA	RED	16"	3/8"	1/4"	WINDLASS JUMPER
BILGE KEEL	12 GA	BROWN	12'			BILGE PUMP (+)
	12 GA	YELLOW	12'			BILGE PUMP (-)
AIR CONDITIONING	10-3	ROMEX	18'			AIR COND
	14-3	ROMEX	8'			AC PUMP
ELECTRICAL STAGE 56						
	WIRE SIZE	COLOR	LENGTH	EYE	EYE	DESCRIPTION
WINDLASS	2 GA	RED	1' 6"	5/16"	5/16"	BOX TO MOTOR-WL
	2 GA	RED	1' 6"	5/16"	5/16"	BOX TO MOTOR-WL
	16 GA	YELLOW	1' 6"	5/16"	F-spade	CONTROL BOX NEG.

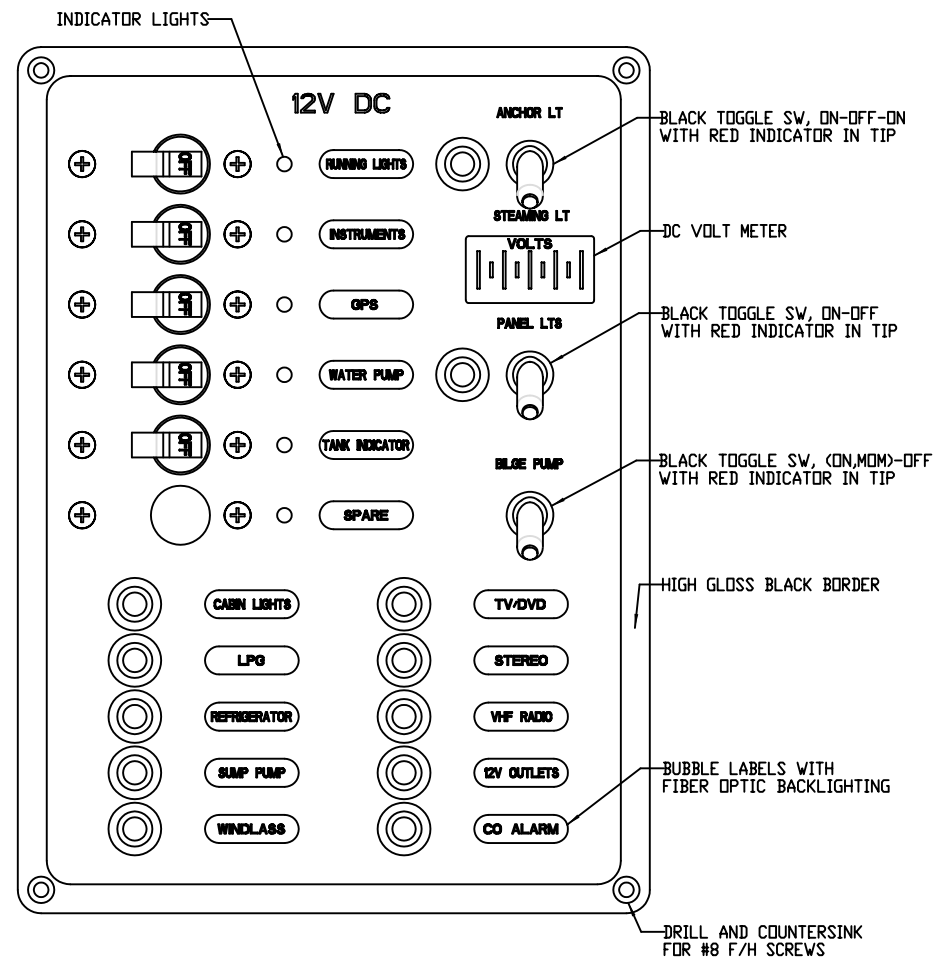
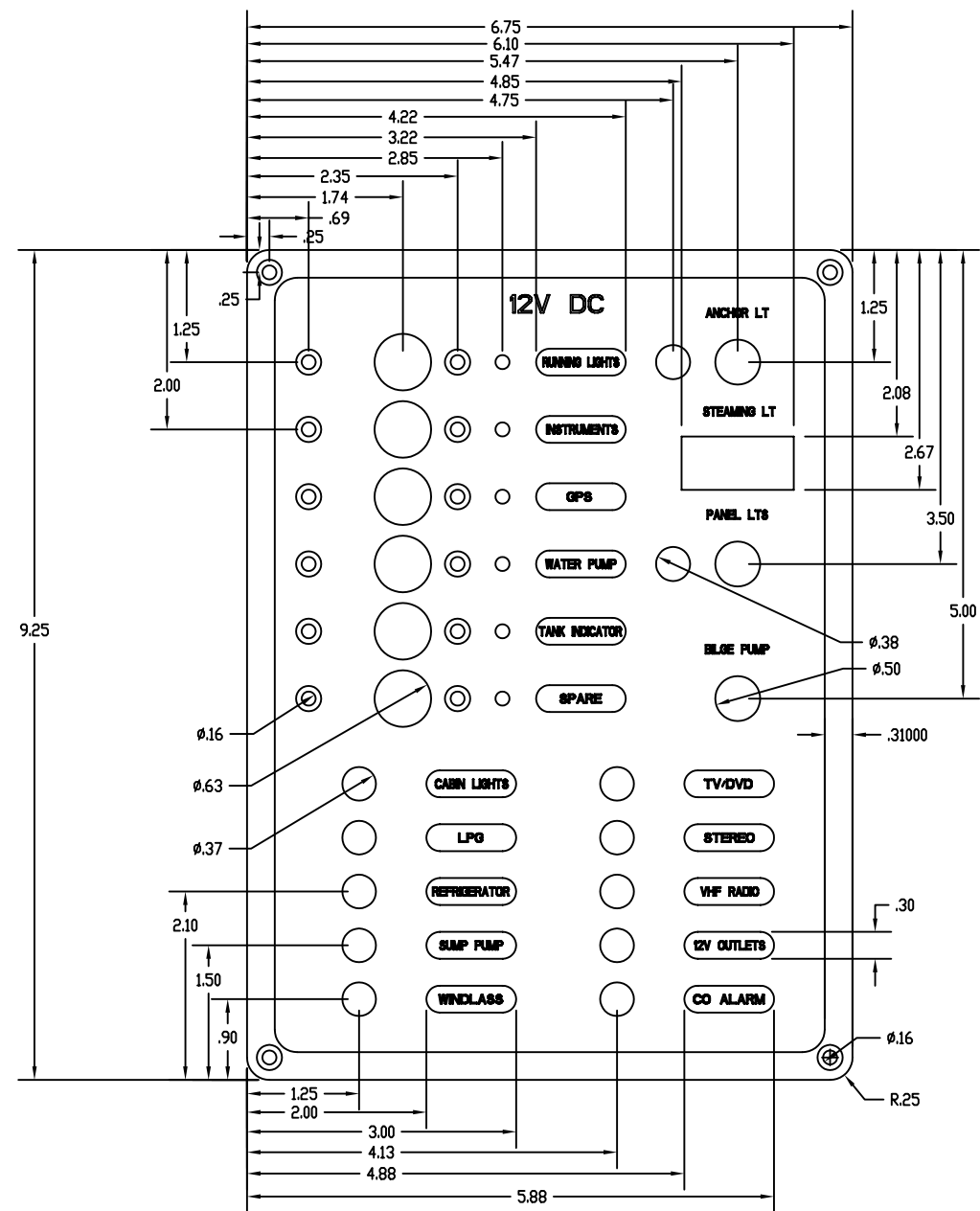
H31 10/14/2005

TV / D V D



#	EYE	SIZE	EYE	COLOR	LENGTH	DESCRIPTION
1		10 GA		RED	20'	TV/DVD PWR
2		10 GA		YELLOW	20'	TV/DVD NEG.
3		22 GA		4 COND.	25'	PHONE CABLE
4		RG59		COAX	35'	TV CABLE

SYMBOL	REVISIONS	DATE	ENG



BREAKER LIST TO BE SUPPLIED WITH PANEL.

- RUNNING LIGHTS : 5 AMPS
- INSTRUMENTS : 5 AMPS
- GPS : 5 AMPS
- WATER PUMP : 10 AMPS
- TANK INDICATOR : 5 AMPS

RESET LIST TO BE SUPPLIED WITH PANEL.

- CABIN LIGHTS : 20 AMPS
- LP GAS : 5 AMPS
- REFRIGERATOR : 15 AMPS
- SUMP PUMP : 10 AMPS
- WINDLASS : 10 AMPS
- TV/DVD : 10 AMPS
- STEREO : 10 AMPS
- VHF RADIO : 10 AMPS
- 12V OUTLETS : 15 AMPS
- CO ALARM : 5 AMPS
- ANCHOR LIGHT : 5 AMPS
- PANEL LIGHTS : 5 AMPS

- NOTE:
1. PANEL MATERIAL - 1/8" ALUMINUM
 2. PANEL COLOR & FINISH - FLAT CARBON BLACK WITH GLOSSY BLACK BORDER
 3. BACK LIGHTING COLOR - BLUE
 4. BREAKER INDICATOR LIGHTS - RED LED
 5. BREAKER HANDLE COLOR - BLACK
 6. TOGGLE SWITCHES INDICATORS - RED
 7. SEE ELECTRICAL SCHEMATIC FOR BACKSIDE

PROPRIETARY INFORMATION THIS DRAWING CONTAINS INFORMATION FOR WHICH HUNTERA WOULD CONSIDER ITS PROPRIETARY RIGHTS.

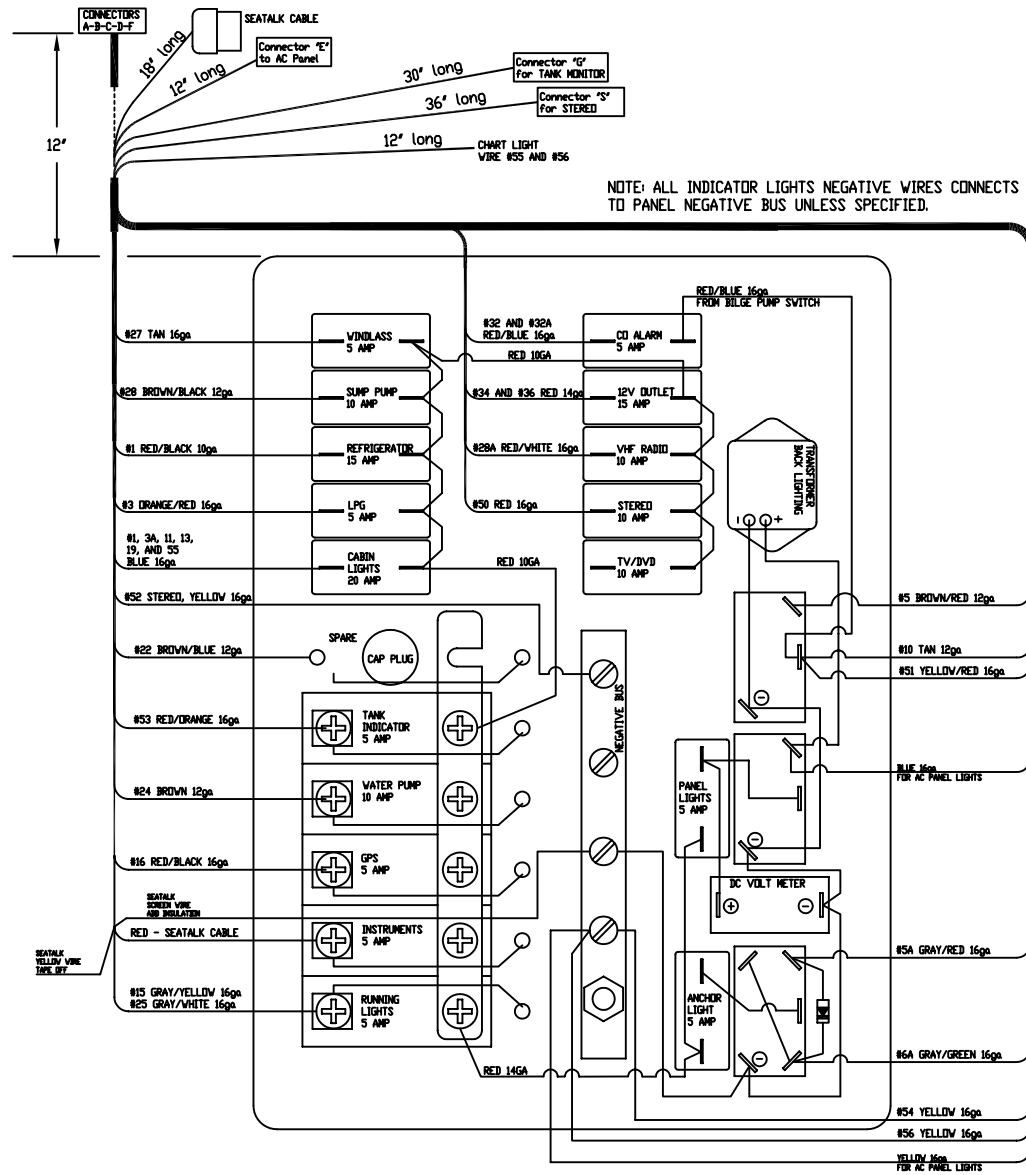
HUNTERA 31

DRAWING TITLE: **PANEL, 12V DC**

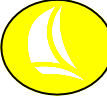
DRAWN BY: **JLK** DATE: **06-01-11** SHEET **1** OF **1**

SCALE: **1:000** HUNTER PART NO: **120** REVISION: **-** DRAWN BY: **JLK**

SYMBOL	REVISIONS	DATE	ENG
A	CORRECTED WIRING TO RESETS	10/29/04	JLK
B	ADD DIODES FOR MAST LIGHT SWITCH INDICATOR	2/4/05	JLK
C	ADJUSTED LENGTH OF CHART LIGHT AND CONNECTOR 'E'	2/23/05	JLK
D	Change diode that is connected to the gray/red wire to a 16ga red wire.	9/1/05	JLK
E	CORRECTED WIRING TO MAST LIGHT TOGGLE SWITCH	10/6/05	JLK



PROPRIETARY INFORMATION THIS DRAWING CONTAINS INFORMATION FOR WHICH HUNTER MARINE CORPORATION HAS PROPRIETARY RIGHTS.



HUNTER 31

DRAWING TITLE: DC PANEL SCHEMATIC

DRAWN BY: JLK DATE: 11-Oct-04 SHEET 1 OF 1

SCALE: 0.625 HUNTER PART NO. TBD REVISION - DRAW # - - -

CHECKED

DC PANEL CONNECTORS for HUNTER 31

All connectors to be female pins with male connectors.

10/11/2004

CONN. A	WIRE# (HULL)	WIRED TO ON PANEL	CONN. TYPE
1	#34, 14ga Red, 12V OUTLET	12VDC OUTLET RESET	Deutsch - DTP Series - 4pin
2	#36, 14ga Red, 12V OUTLET	12VDC OUTLET RESET	
3	#5, 12ga Brown/Red, BILGE MANUAL	BILGE TOGGLE SWITCH	
4	#10, 12ga Tan, BILGE POWER	BILGE TOGGLE SWITCH	

CONN. B	WIRE# (HULL)	WIRED TO ON PANEL	CONN. TYPE
1			Deutsch - DT Series - 6 pin
2			
3	#3, 16ga Orange/Red, LPG	LP GAS BREAKER	
4	#32, 16ga Red/Blue, CO ALARM	CO ALARM RESET	
5	#32A, 16ga Red/Blue, CO ALARM	CO ALARM RESET	
6			

CONN. C	WIRE# (HULL)	WIRED TO ON PANEL	CONN. TYPE
1			Deutsch - DTP Series - 4pin
2	#24, 12ga Brown, WATER PUMP	WATER PUMP BREAKER	
3	#28, 12ga Brown/Black, SUMP PUMP	SUMP PUMP BREAKER	
4	#22, 12ga Brown/Blue, BLOWER	BLOWER BREAKER	

CONN. D	WIRE# (HULL)	WIRED TO ON PANEL	CONN. TYPE
1	#1, 10ga Red/Black, REFRIGERATOR	REFRIGERATOR BREAKER	Deutsch - DTP Series - 2pin
2			

CONN. E	WIRE# (PANEL TO PANEL)	WIRED TO ON PANEL	CONN. TYPE
1	16ga Blue, PANEL LIGHTS	PANEL LIGHT BREAKER	Deutsch - DT Series - 2 pin
2	16ga Yellow, PANEL LIGHTS (-)	DC NEGATIVE BUS	

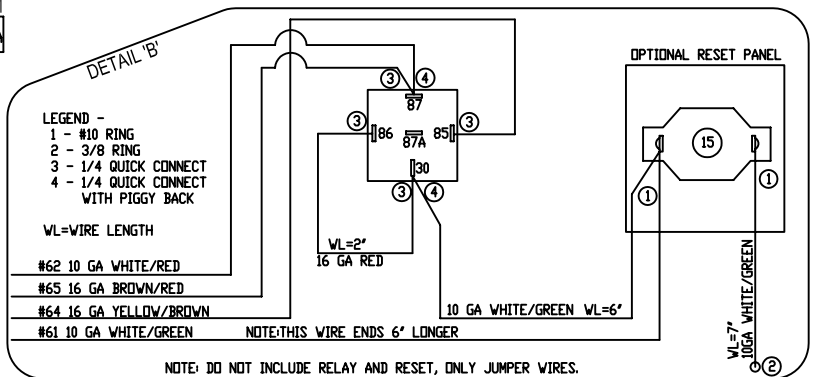
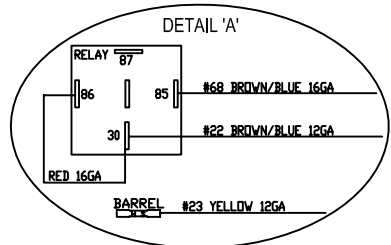
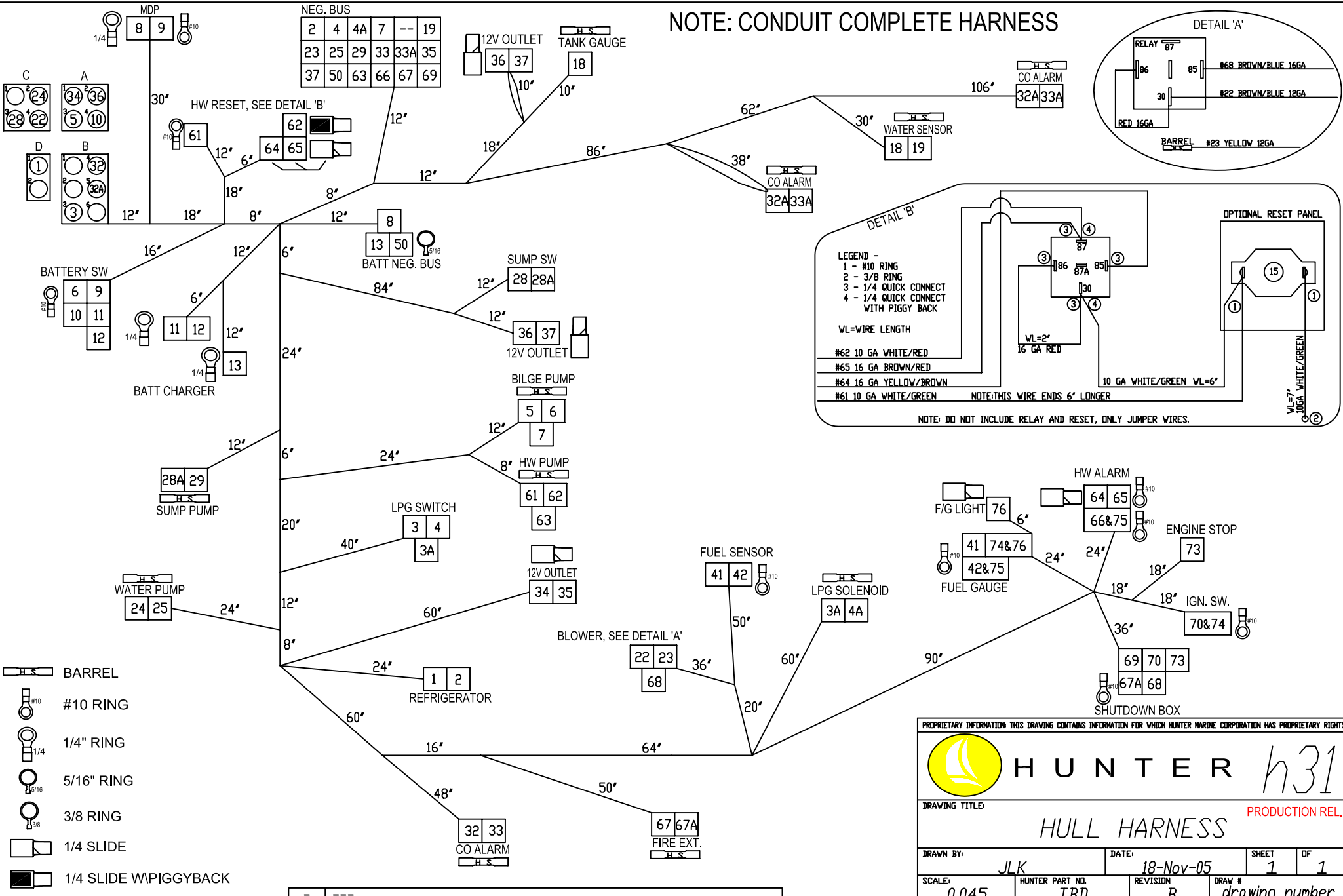
CONN. F	WIRE# (DECK)	WIRED TO ON PANEL	CONN. TYPE
1	#1, 16ga Blue, MAIN LIGHTS	CABIN LIGHT BREAKER	Deutsch - DT Series - 12 pin
2	#3A, 16ga Blue, FORWARD LIGHTS	CABIN LIGHT BREAKER	
3	#5A, 14ga Gray/Red, ANCHOR LIGHT	ANCHOR LIGHT BREAKER	
4	#6A, 14ga Gray/Green, STEAMING LIGHT	STEAMING LIGHT BREAKER	
5	#13, 16ga Blue, PORT AFT LIGHTS	CABIN LIGHT BREAKER	
6	#28A, 16ga Red/White, VHF PWR	VHF RADIO BREAKER	
7	#11, 16ga Blue, STBD LIGHTS	CABIN LIGHT BREAKER	
8	#15, 16ga Gray/Yellow, STERN LIGHT	RUNNING LIGHTS BREAKER	
9	#19, 16ga Blue/White, ARCH LIGHT	CABIN LIGHT BREAKER	
10	#25, 16ga Gray/White, BOW LIGHT	RUNNING LIGHTS BREAKER	
11	#27, 16ga Tan, WINDLASS	WINDLASS BREAKER	
12	#16, 16ga Red/Black, GPS	GPS BREAKER	

CONN. G	WIRE# (TO TANK MONITOR)	WIRED TO ON PANEL OR OTHER	CONN. TYPE
1	#53, 16ga Red/Orange, TANK MONITOR (+)	TANK DISPLAY BREAKER	Deutsch - DT Series - 2 pin
2	#54, 16ga Yellow, TANK MONITOR (-)	DC NEGATIVE BUS	

CONN. S	WIRE# (STEREO PWR)	WIRED TO ON PANEL	CONN. TYPE
1	#50, 16ga Red, STEREO PWR	STEREO BREAKER	Deutsch - DT Series - 3 pin
2	#51, 16ga Yellow/Red, STEREO MEMORY	center post bilge toggle switch with #5 brown/red wire	
3	#52, 16ga Yellow, STEREO (-)	DC NEGATIVE BUS	

	WIRE#	WIRED TO ON PANEL	
	#55, 16ga Blue, CHART LIGHT (+)	CABIN LIGHT BREAKER, 66" total length	blue butt splice
	#56, 16ga Yellow, CHART LIGHT (-)	DC NEGATIVE BUS, 66" total length	blue butt splice

NOTE: CONDUIT COMPLETE HARNESS



- BARREL
- #10 RING
- 1/4" RING
- 5/16" RING
- 3/8 RING
- 1/4 SLIDE
- 1/4 SLIDE W/PIGGYBACK

PROPRIETARY INFORMATION THIS DRAWING CONTAINS INFORMATION FOR WHICH HUNTER MARINE CORPORATION HAS PROPRIETARY RIGHTS.

HUNTER *h31*

DRAWING TITLE: **HULL HARNESS** PRODUCTION REL.

DRAWN BY: *JLK* DATE: *18-Nov-05* SHEET *1* OF *1*

SCALE: *0.045* HUNTER PART NO. *TBD* REVISION *B* DRAW # *drawing number*

HUNTER 31 DC HULL HARNESS			11/18/2005	
WIRE#	GAUGE	COLOR	LENGTH	FUNCTION
1	10	RED/BLACK	138"	REFRIGERATION
2	10	YELLOW	120"	REFRIGERATION NEG.
3	16	ORANGE/RED	134"	LPG PANEL SW
4	16	YELLOW	116"	LPG INDICATOR NEG.
3A	16	ORANGE/GREEN	260"	LPG SOLENOID (+)
4A	16	YELLOW	296"	LPG SOLENOID (-)
5	12	BROWN/RED	110"	BILGE MANUAL SW
6	12	BROWN/ORANGE	96"	BILGE AUTO
7	12	YELLOW	92"	BILGE NEG.
8	6	YELLOW	68"	DC MDP NEG.
9	6	ORANGE/RED	64"	DC MDP POWER
10	12	TAN	46"	BILGE POWER
11	8	ORANGE/GREEN	34"	BATTERY CHARGER
12	8	ORANGE/RED	34"	BATTERY CHARGER
13	8	YELLOW	36"	BATTERY CHARGER NEG
18	16	PINK/BLACK	206"	WATER SENSOR (S)
19	16	YELLOW	202"	WATER SENSOR (-)
22	12	BROWN/BLUE	310"	BLOWER
23	12	YELLOW	292"	BLOWER NEG.
24	12	BROWN	130"	WATER PUMP
25	12	YELLOW	112"	WATER PUMP NEG.
28	12	BROWN/BLACK	140"	SUMP PUMP SW
28A	12	BROWN/BLACK	132"	SUMP PUMP
29	12	YELLOW	62"	SUMP PUMP NEG.
32	16	RED/BLUE	222"	CO DETECTOR
33	16	YELLOW	204"	CO DETECTOR NEG.
32A	16	RED/BLUE	388"	CO DETECTOR
33A	16	YELLOW	354"	CO DETECTOR NEG.
34	12	RED	174"	12V OUTLET
35	12	YELLOW	156"	12V OUTLET NEG.
36	12	RED	236"	12V OUTLET
37	12	YELLOW	202"	12V OUTLET NEG.
41	16	PINK	184"	FUEL SENSOR (S)
42	16	YELLOW	184"	FUEL SENSOR (-)
50	6	YELLOW	32"	NEG BUS JUMPER
61	10	WHITE/GREEN	106"	HW PUMP AUTO
62	10	WHITE/RED	100"	HW PUMP MANUAL
63	10	YELLOW	88"	HW PUMP NEG
64	16	YELLOW/BROWN	362"	HW RELAY SW
65	16	BROWN/RED	362"	HW ALARM IND
66	16	YELLOW	350"	HW ALARM NEG
67	16	BLACK/YELLOW	222"	FIRE EXT.
67A	16	BLACK/YELLOW	240"	FIRE EXT. - SHUTDOWN
68	16	BROWN/BLUE	182"	BLOWER RELAY
69	16	YELLOW	362"	FIRE EXT. - SHUTDOWN BOX
70	16	RED	72"	IGNITION SWITCH
73	16	WHITE/BROWN	72"	ENGINE STOP
74	16	RED	60"	FUEL GAUGE POWER
75	16	YELLOW	48"	FUEL GAUGE NEGATIVE
76	16	RED	6"	FUEL GAUGE LIGHT

HULL HARNESS CONNECTORS for h31

All connectors to be male pins with female connectors.

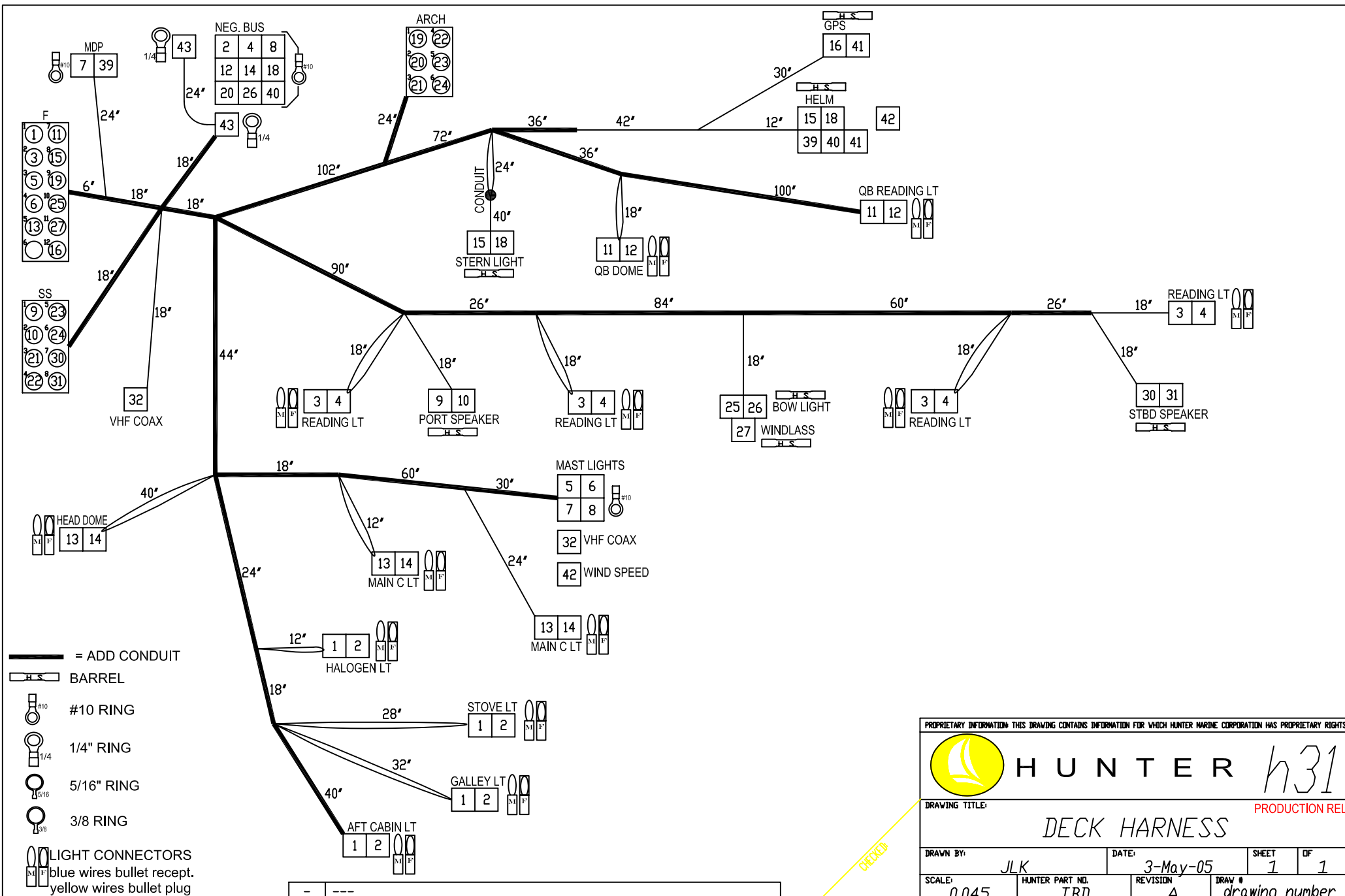
REV. -
9/29/2004

CONN. A	WIRE# (HULL)	NOTES:	CONN. TYPE
1	#34, 14ga Red, 12V OUTLET		Deutsch - DTP Series - 4 pin
2	#36, 14ga Red, 12V OUTLET		
3	#5, 12ga Brown/Red, BILGE MANUAL		
4	#10, 12ga Tan, BILGE POWER		

CONN. B	WIRE# (HULL)		CONN. TYPE
1			Deutsch - DT Series - 6 pin
2			
3	#3, 16ga Orange/Red, LPG		
4	#32, 16ga Red/Blue, CO ALARM		
5	#32A, 16ga Red/Blue, CO ALARM		
6			

CONN. C	WIRE# (HULL)		CONN. TYPE
1			Deutsch - DTP Series - 4 pin
2	#24, 12ga Brown, WATER PUMP		
3	#28, 12ga Brown/Black, SUMP PUMP		
4	#22, 12ga Brown/Blue, BLOWER		

CONN. D	WIRE# (HULL)		CONN. TYPE
1	#1, 10ga Red/Black, REFRIGERATOR		Deutsch - DTP Series - 2 pin
2			



PROPRIETARY INFORMATION THIS DRAWING CONTAINS INFORMATION FOR WHICH HUNTER MARINE CORPORATION HAS PROPRIETARY RIGHTS.

HUNTER *h31*

DRAWING TITLE: **DECK HARNESS** PRODUCTION REL

DRAWN BY: *JLK* DATE: *3-May-05* SHEET *1* OF *1*

SCALE: *0.045* HUNTER PART NO. *TBD* REVISION *A* DRAW # *drawing number*

CHECKED

HUNTER 31 DECK HARNESS			REV.-B	1/3/2005
WIRE#	GAUGE	COLOR	LENGTH	FUNCTION
1	16	BLUE	312"	CABIN LIGHTS
2	16	YELLOW	306"	CABIN LIGHTS NEG.
3	16	BLUE	454"	CABIN LIGHTS
4	16	YELLOW	448"	CABIN LIGHTS NEG.
5	14	GRAY/RED	194"	ANCHOR LIGHT
6	14	GRAY/GREEN	194"	STEAMING LIGHT
7	16	GRAY	214"	DECK LIGHT
8	10	YELLOW	188"	MAST LIGHTS NEG.
9	16	WHITE/ORANGE	144"	PORT MAIN SPEAKER
10	16	WHITE/YELLOW	144"	PORT MAIN SPEAKER NEG.
11	16	BLUE	388"	CABIN LIGHTS
12	16	YELLOW	382"	CABIN LIGHTS NEG.
13	16	BLUE	292"	CABIN LIGHTS
14	16	YELLOW	286"	CABIN LIGHTS NEG.
15	16	GRAY/YELLOW	394"	STERN LIGHT
16	16	RED/BLACK	324"	GPS
18	16	YELLOW	388"	STERN LIGHT NEG.
19	16	BLUE/WHITE	168"	ARCH LIGHT
20	16	YELLOW	162"	ARCH LIGHT NEG.
21	16	WHITE/PINK	162"	PORT ARCH SPEAKER
22	16	WHITE/YELLOW	162"	PORT ARCH SPEAKER NEG.
23	16	WHITE/GRAY	162"	STBD ARCH SPEAKER
24	16	WHITE/BLACK	162"	STBD ARCH SPEAKER NEG.
25	16	GRAY/WHITE	260"	BOW LIGHT
26	16	YELLOW	254"	BOW LIGHT NEG.
27	16	TAN	260"	WINDLASS
30	16	WHITE/BLUE	346"	STBD MAIN SPEAKER
31	16	WHITE/BLACK	346"	STBD MAIN SPEAKER NEG.
32	RG-8X	WHITE	188"	VHF COAX
39	10	RED	324"	AUTO PILOT
40	10	YELLOW	318"	AUTO PILOT NEG.
41	16	YELLOW	42"	GPS NEG
42		WIND SP CABLE	416"	WIND SPEED
43	6	YELLOW	24"	NEG JUMPER

DECK HARNESS CONNECTORS for h31

All connectors to be male pins with female connectors.

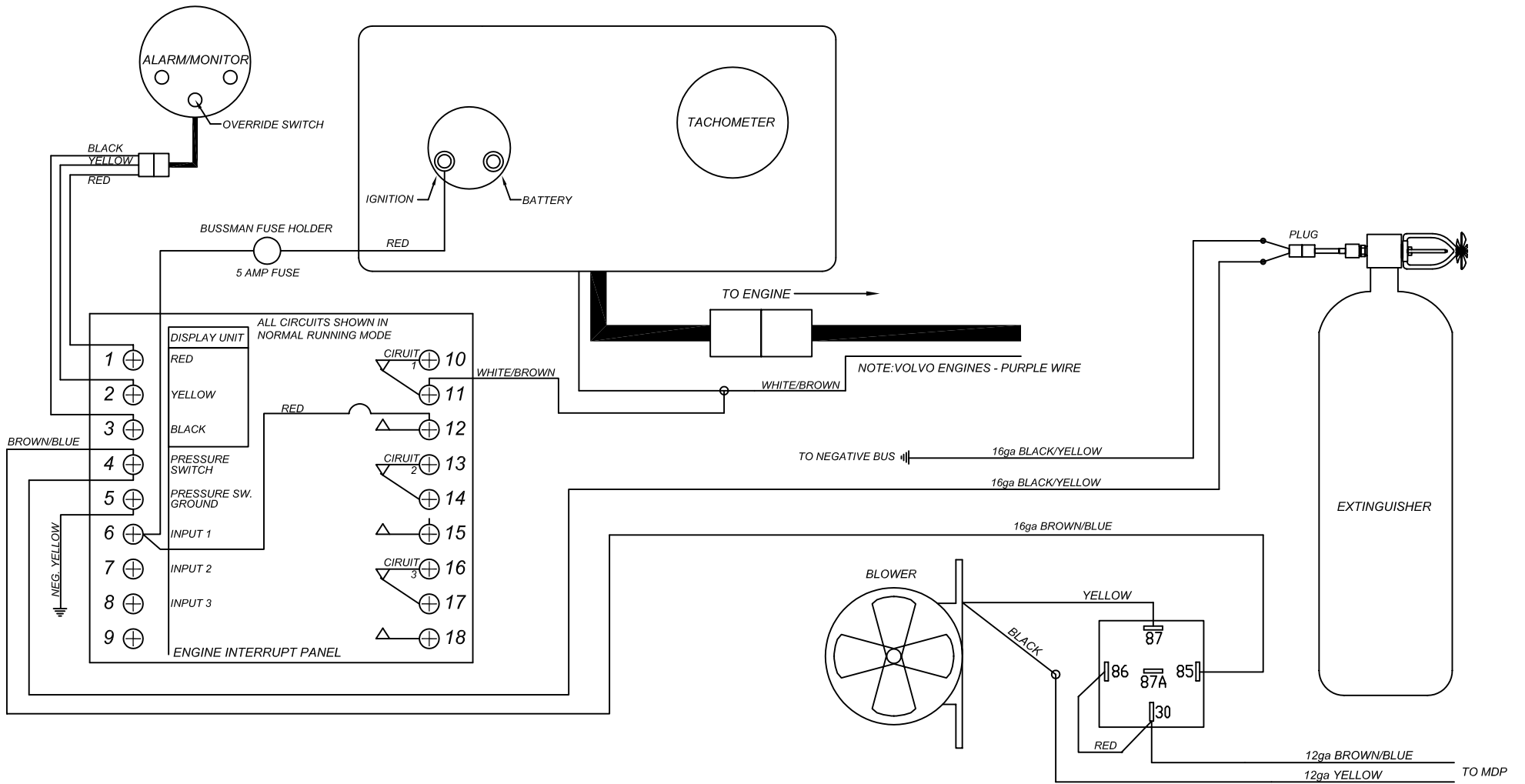
10/1/2004

CONN. F	WIRE# (DECK)	NOTES:	CONN. TYPE
1	#1, 16ga blue, CABIN LIGHTS		Deutsch - DT Series - 12 pin
2	#3, 16ga blue, CABIN LIGHTS		
3	#5, 14ga gray/red, ANCHOR LIGHT		
4	#6, 14ga gray/green, STEAMING LIGHT		
5	#13, 16ga blue, CABIN LIGHTS		
6			
7	#11, 16ga blue, STBD LIGHTS		
8	#15, 16ga gray/yellow, STERN LIGHT		
9	#19, 16ga blue/white, ARCH LIGHT		
10	#25, 16ga gray/white, BOW LIGHT		
11	#27, 16ga tan, WINDLASS		
12	#16, 16ga red/black, GPS		

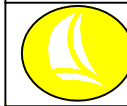
CONN. SS	WIRE# (TO STEREO)		CONN. TYPE
1	#9, 16ga white/orange, PORT MAIN SPEAKER (+)		Deutsch - DT Series - 8 pin
2	#10, 16ga white/yellow, PORT MAIN SPEAKER (-)		
3	#21, 16ga white/pink, PORT ARCH SPEAKER (+)		
4	#22, 16ga white/yellow, PORT ARCH SPEAKER (-)		
5	#23, 16ga white/gray, STBD ARCH SPEAKER (+)		
6	#24, 16ga white/black, STBD ARCH SPEAKER (-)		
7	#30, 16ga white/blue, STBD MAIN SPEAKER (+)		
8	#31, 16ga white/black, STBD MAIN SPEAKER (-)		

CONN. Arch	WIRE# (TO ARCH)		CONN. TYPE
1	#19, 16ga blue/white, ARCH LIGHT		Deutsch - DT Series - 6 pin
2	#20, 16ga yellow, ARCH LIGHT (-)		
3	#21, 16ga white/pink, PORT ARCH SPEAKER (+)		
4	#22, 16ga white/yellow, PORT ARCH SPEAKER (-)		
5	#23, 16ga white/gray, STBD ARCH SPEAKER (+)		
6	#24, 16ga white/black, STBD ARCH SPEAKER (-)		

No Connector	WIRE# (to spare on panel)		
	#39, 10ga red, AUTOPILOT		
	#7, 16ga gray, DECK LIGHT		



PROPRIETARY INFORMATION THIS DRAWING CONTAINS INFORMATION FOR WHICH HUNTER MARINE CORPORATION HAS PROPRIETARY RIGHTS.

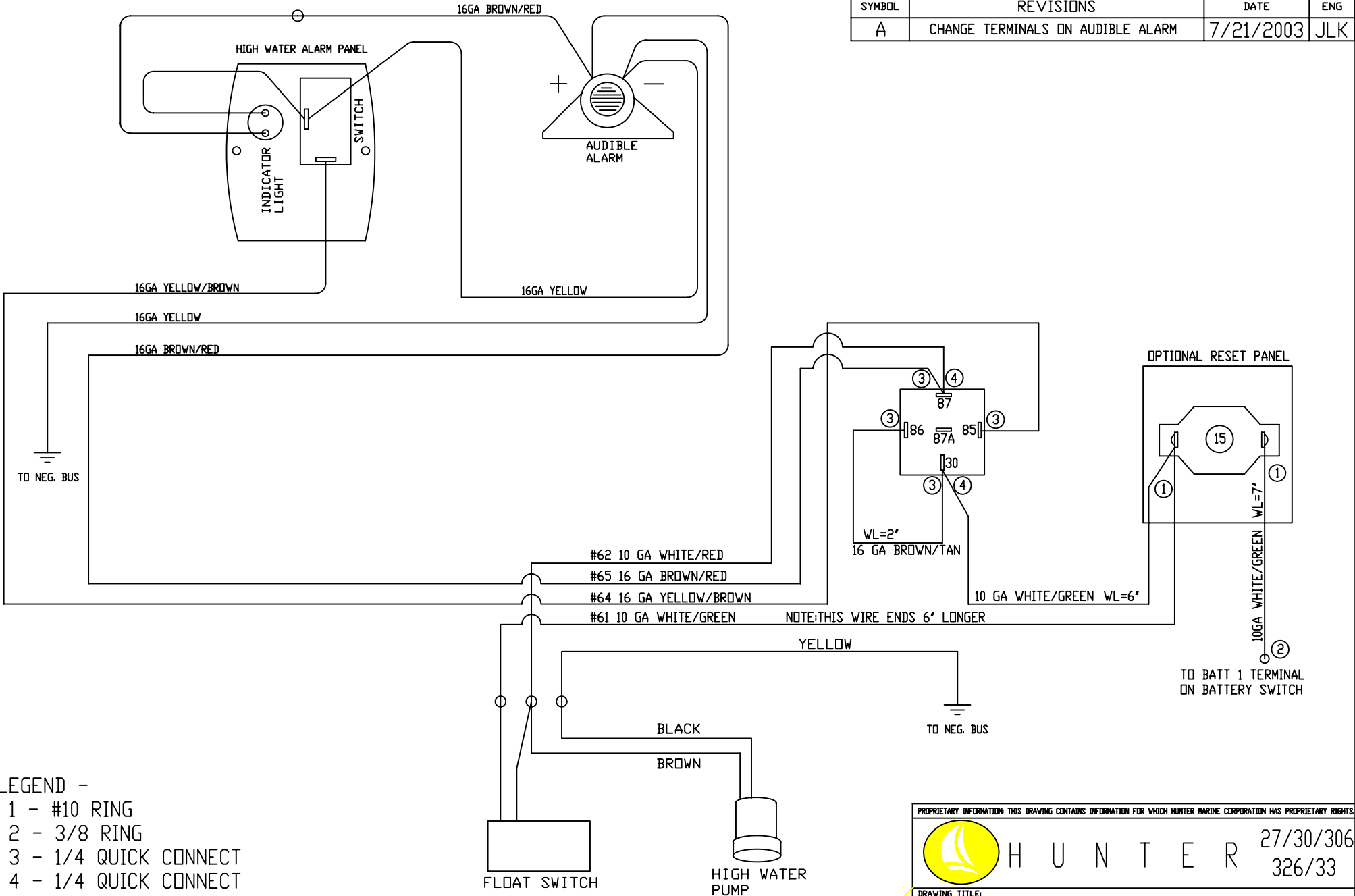


HUNTER 27/30/33

DRAWING TITLE: AUTOMATIC FIRE EXTINGUISHER SCHEMATIC				
DRAWN BY: JLK	DATE: 4-Feb-05	SHEET 1	OF 1	
SCALE: 0.045	HUNTER PART NO. TBD	REVISION A	DRAW # -----	

CHECKED


SYMBOL	REVISIONS	DATE	ENG
A	CHANGE TERMINALS ON AUDIBLE ALARM	7/21/2003	JLK



- LEGEND -
- 1 - #10 RING
 - 2 - 3/8 RING
 - 3 - 1/4 QUICK CONNECT
 - 4 - 1/4 QUICK CONNECT WITH PIGGY BACK

WL=WIRE LENGTH

PROPRIETARY INFORMATION THIS DRAWING CONTAINS INFORMATION FOR WHICH HUNTER MARINE CORPORATION HAS PROPRIETARY RIGHTS.

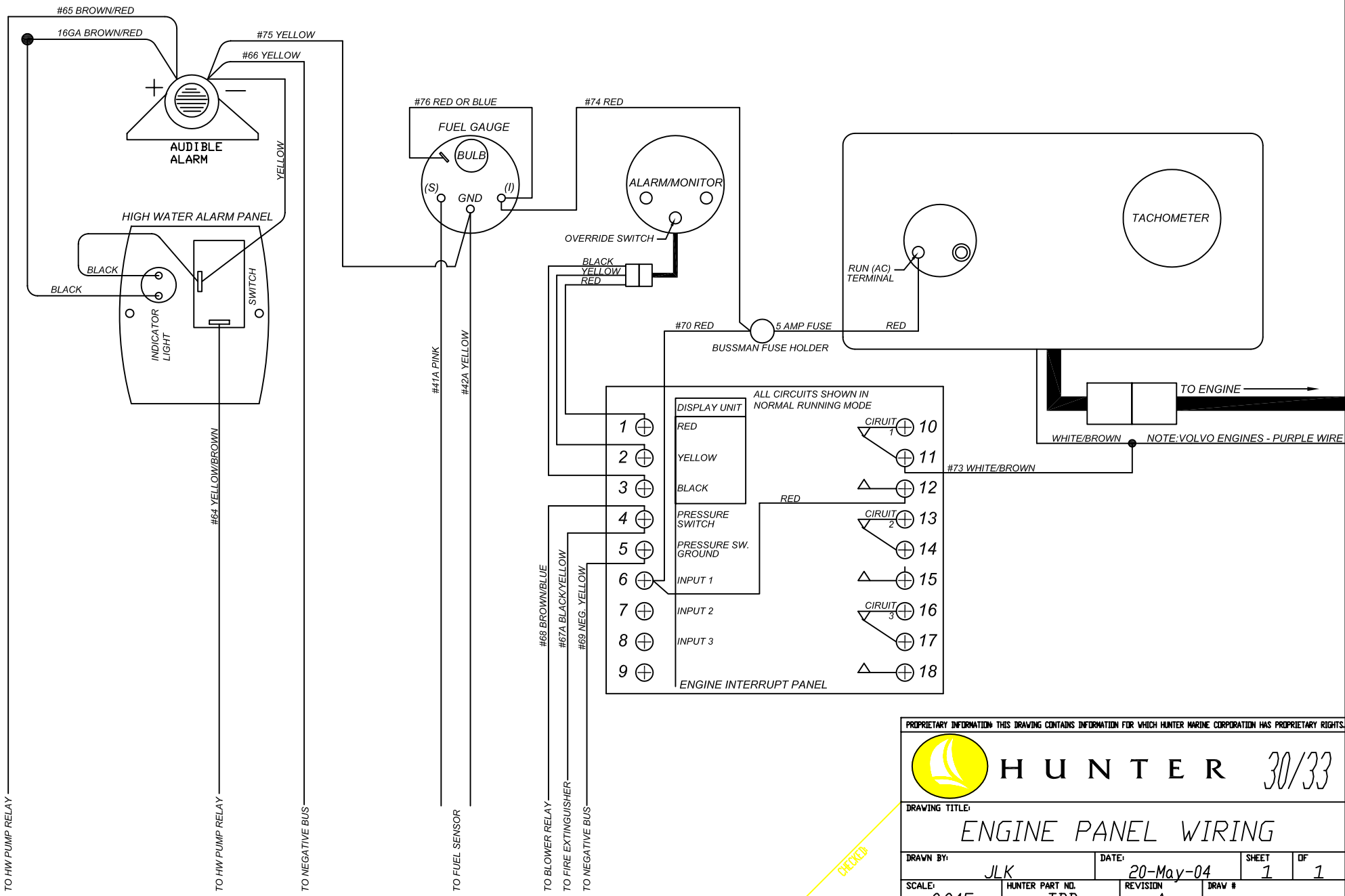


H U N T E R 27/30/306
326/33


DRAWING TITLE:
HIGH WATER BILGE PUMP SCHEMATIC

DRAWN BY: JLK	DATE: 2/27/2003	SHEET	OF
SCALE:	HUNTER PART NO.	REVISION	DRAW #

CHECKED



PROPRIETARY INFORMATION THIS DRAWING CONTAINS INFORMATION FOR WHICH HUNTER MARINE CORPORATION HAS PROPRIETARY RIGHTS.



HUNTER 30/33

DRAWING TITLE: **ENGINE PANEL WIRING**

DRAWN BY: *JLK* DATE: *20-May-04* SHEET *1* OF *1*

SCALE: *0.045* HUNTER PART NO. *TBD* REVISION *A* DRAW # *-----*

CHECKED