

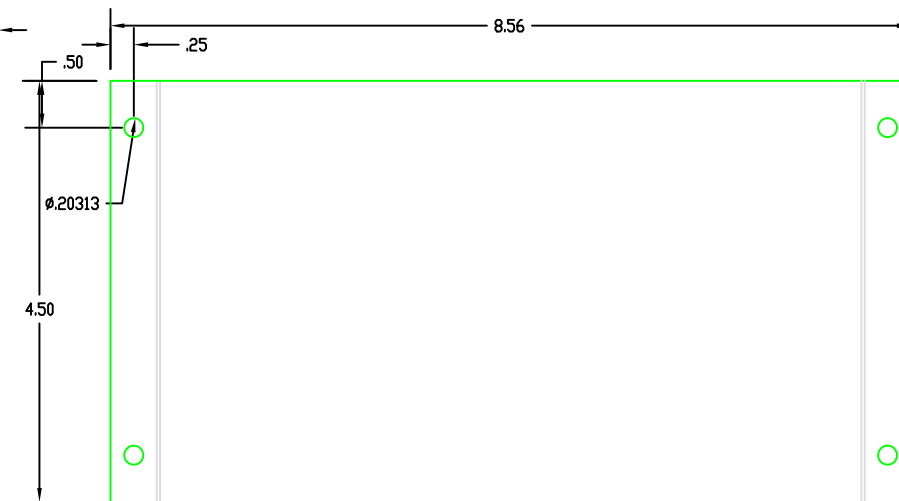
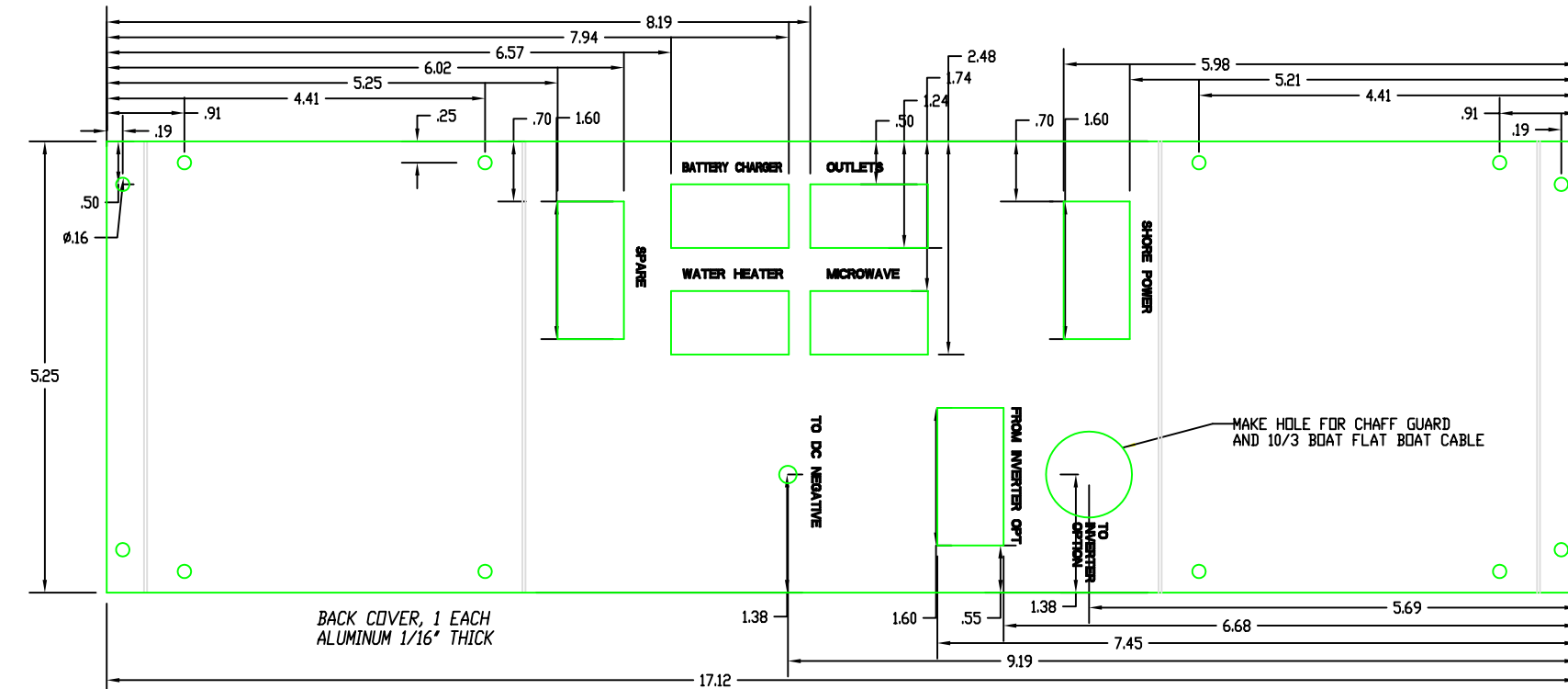
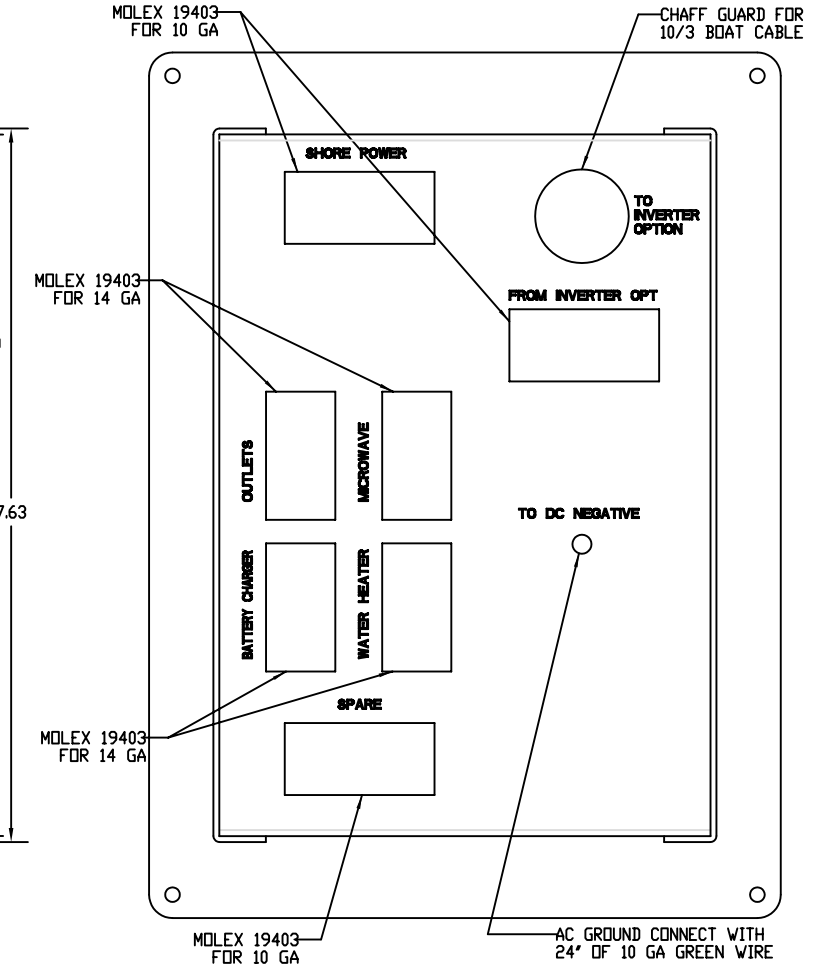
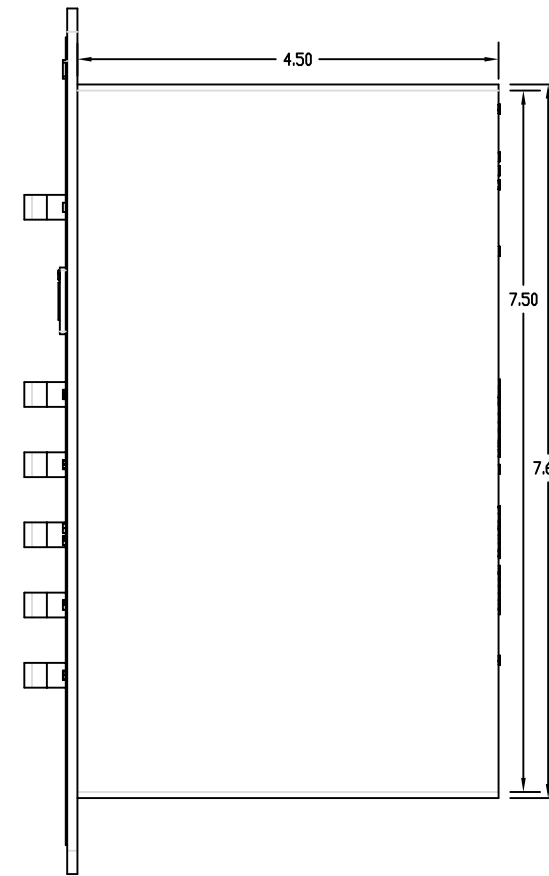
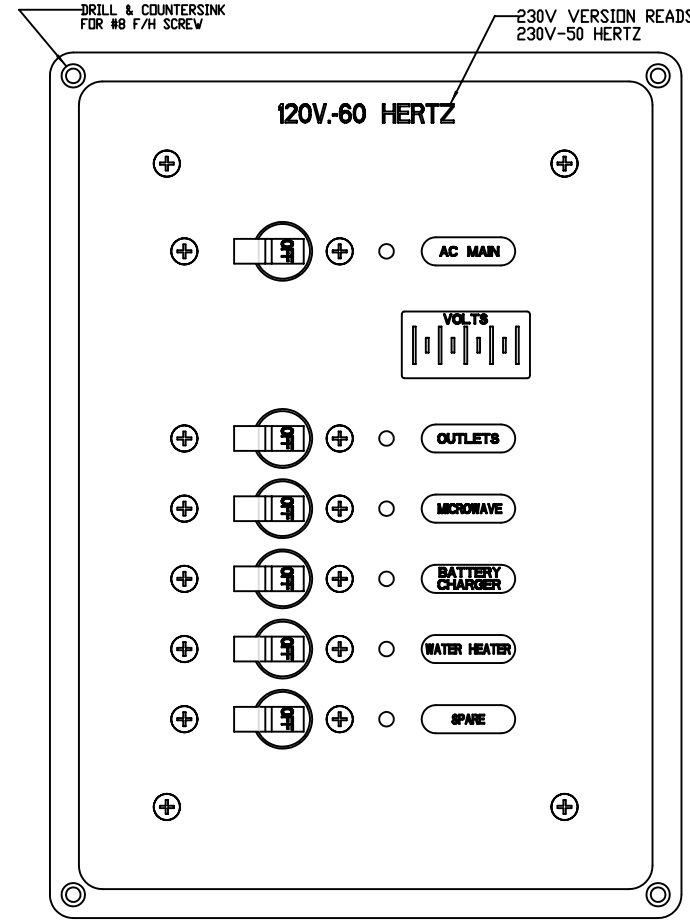
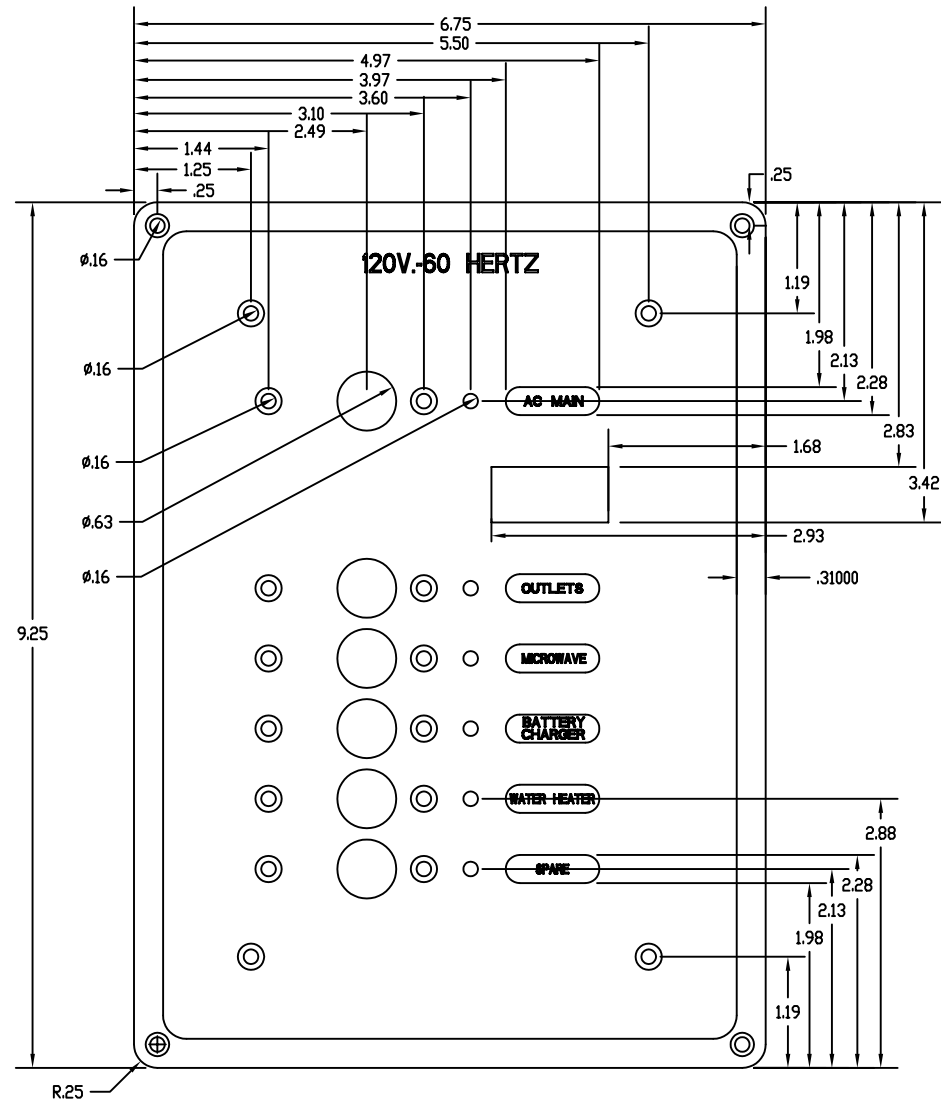
31
SCHEMATICS

2/6/2008

INDEX

PAGE

3. *AC Panel*
4. *230V AC Panel*
5. *AC Panel Schematic*
6. *230v AC Panel Schematic*
7. *AC Wire Kit*
8. *Stage Wire Kits*
9. *TV-DVD Option Kit*
10. *DC Panel*
11. *DC Panel Schematic*
12. *DC Panel Connectors*
14. *Hull Harness*
15. *Hull Harness Wire List*
16. *Hull Harness Connectors*
17. *Deck Harness*
18. *Deck Harness Wire List*
19. *Deck Harness Connectors*
20. *Auto Fire System Schematic*
21. *High Water Pump System Schematic*
22. *Engine Panel Area Schematic*



- BREAKER LIST TO BE SUPPLIED WITH PANEL FOR 120V-60 HERTZ VERSION:**
- AC MAIN 30 AMP
 - OUTLETS 15 AMP
 - MICROWAVE 15 AMP
 - BATTERY CHARGER 15 AMP
 - WATER HEATER 15 AMP
 - SPARE 25 AMP

- BREAKER LIST TO BE SUPPLIED WITH PANEL FOR 230V-50 HERTZ VERSION:**
- AC MAIN 15 AMP
 - OUTLETS 10 AMP
 - MICROWAVE 10 AMP
 - BATTERY CHARGER 10 AMP
 - WATER HEATER 10 AMP
 - SPARE 15 AMP

- NOTE:**
1. PANEL MATERIAL - 1/8" ALUMINUM
 2. PANEL COLOR&FINISH - FLAT CARBON BLACK WITH GLOSSY BLACK BORDER
 3. BACK LIGHTING COLOR - BLUE
 4. AC MAIN INDICATOR - RED LED
 5. BREAKER INDICATOR LIGHTS - RED LED
 6. BREAKER HANDLE COLOR - BLACK
 6. SEE ELECTRICAL SCHEMATIC FOR BACKSIDE

SIDE BACK COVER, 2 EACH ALUMINUM 1/16" THICK

BACK COVER, 1 EACH ALUMINUM 1/16" THICK

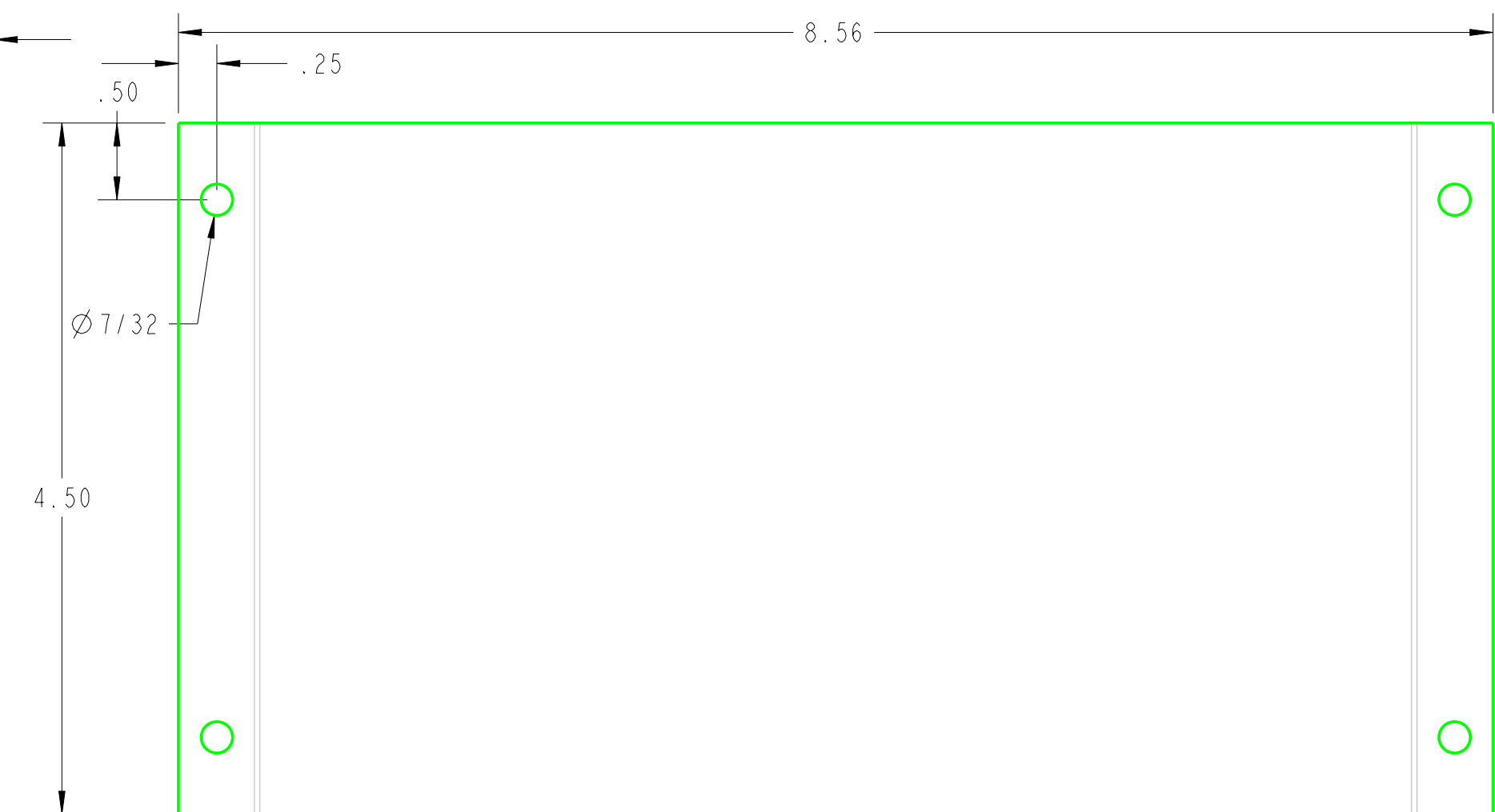
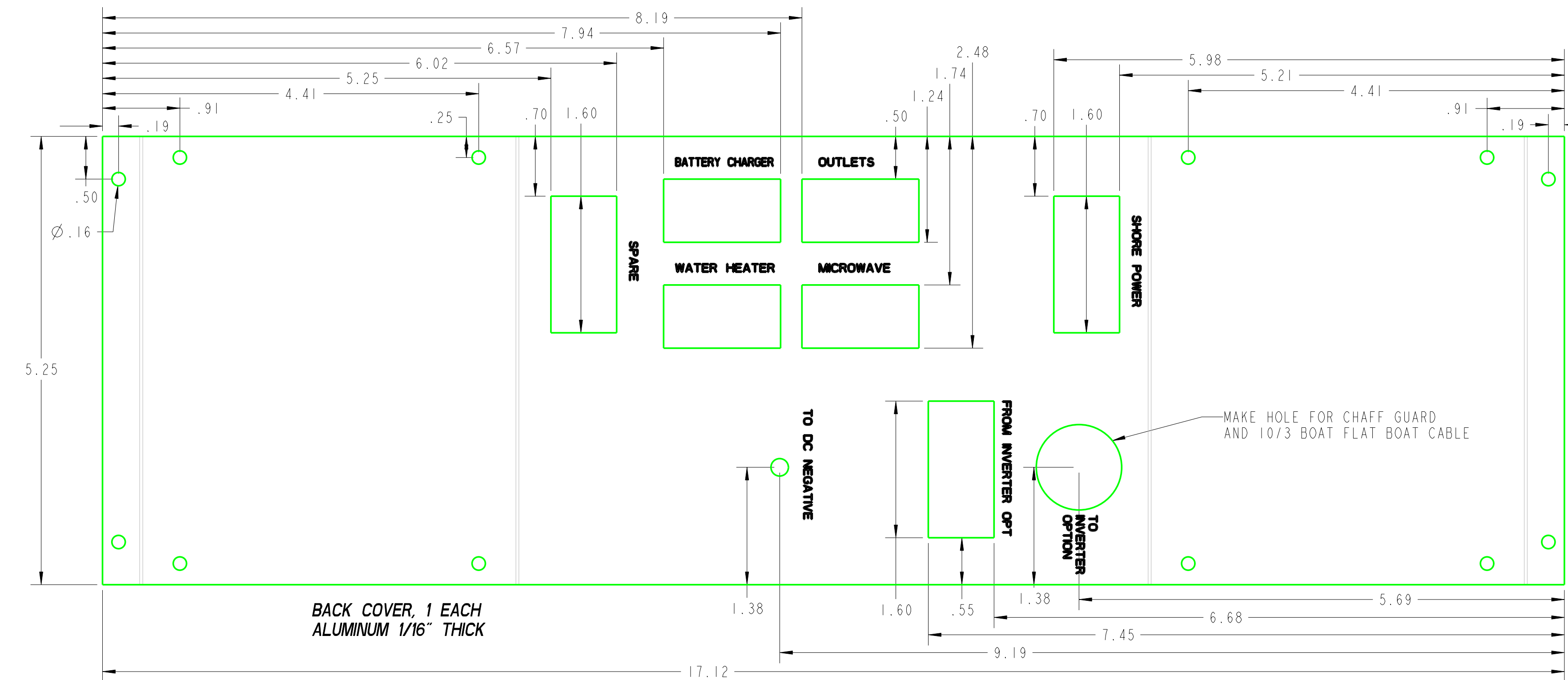
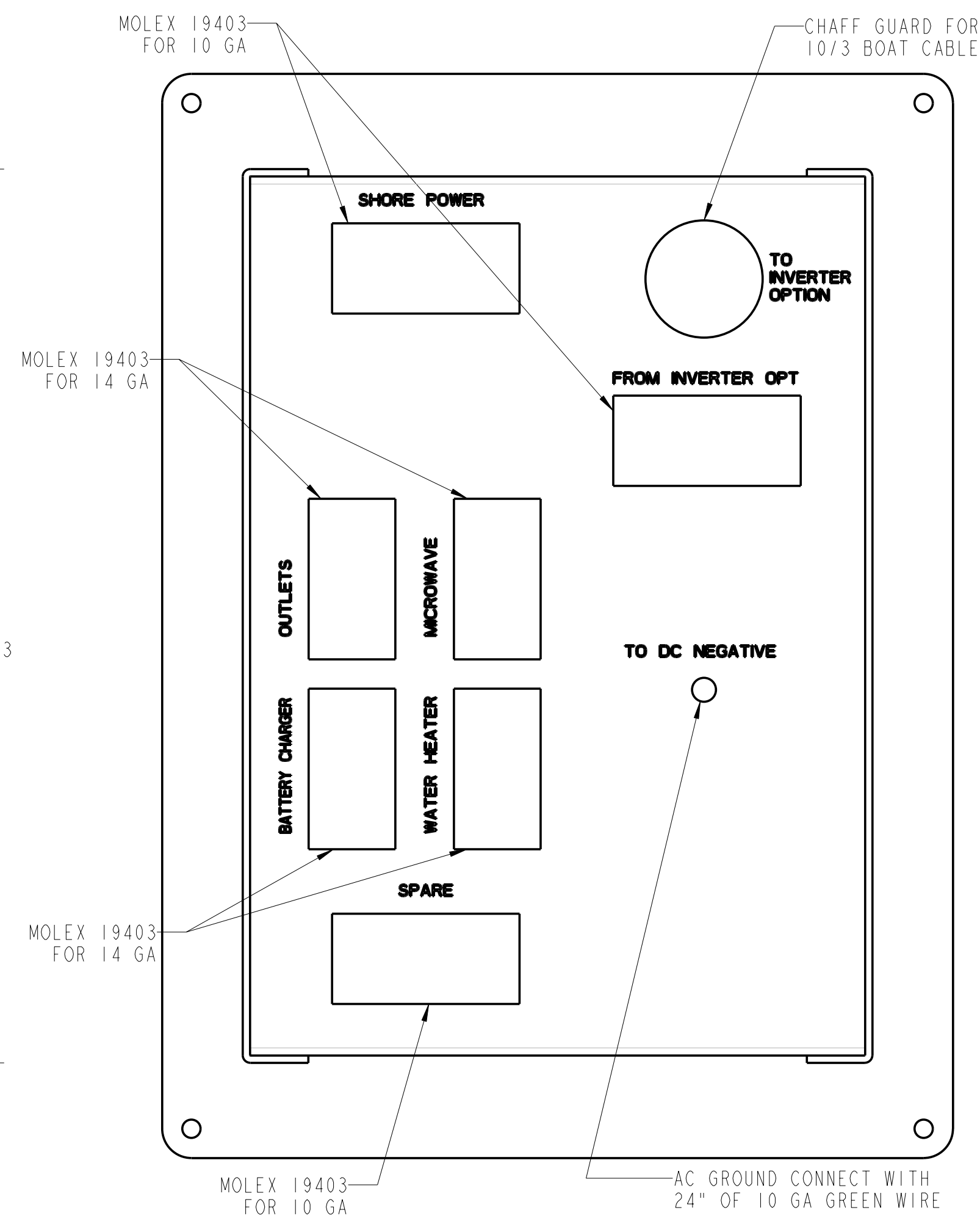
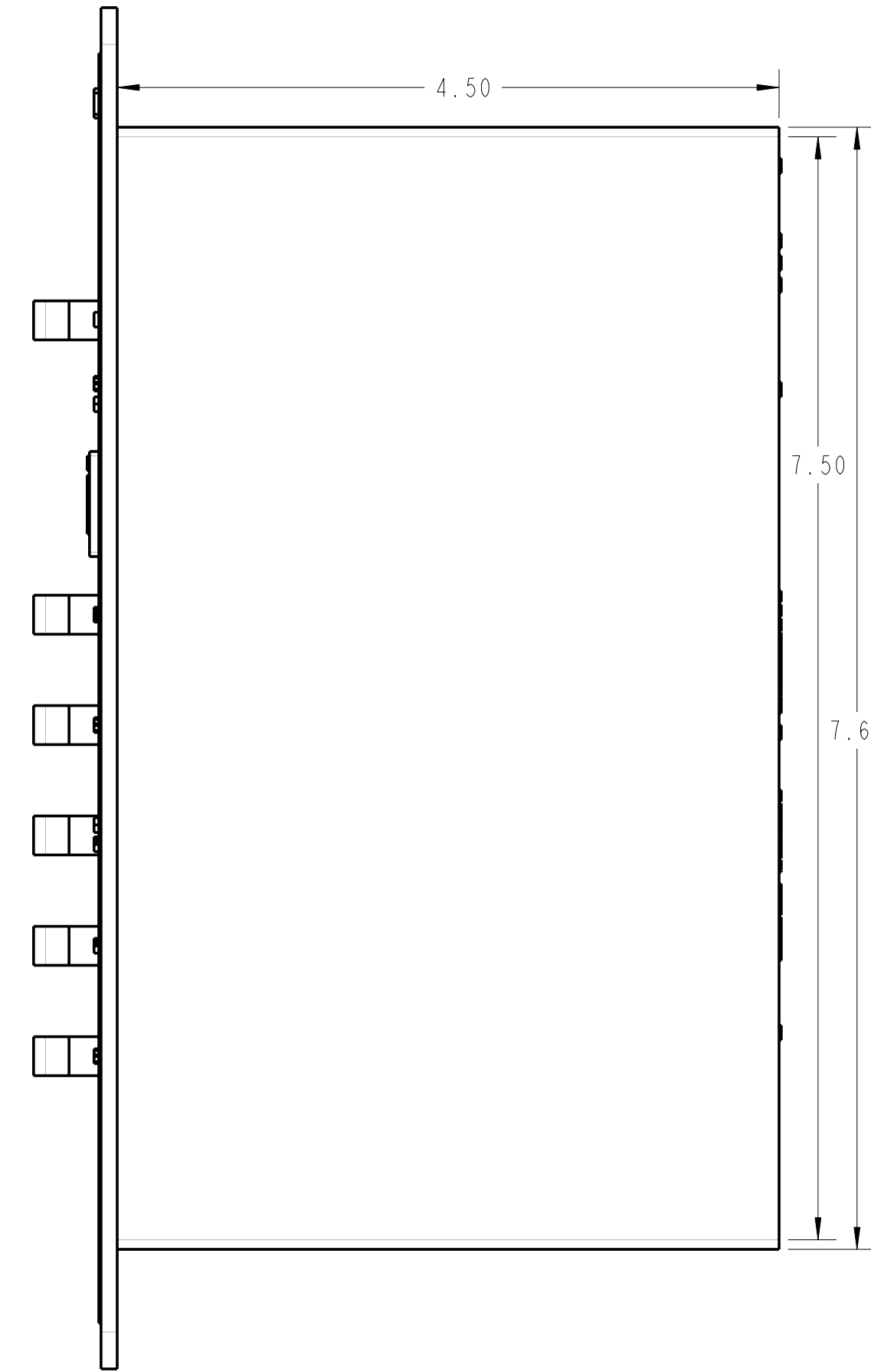
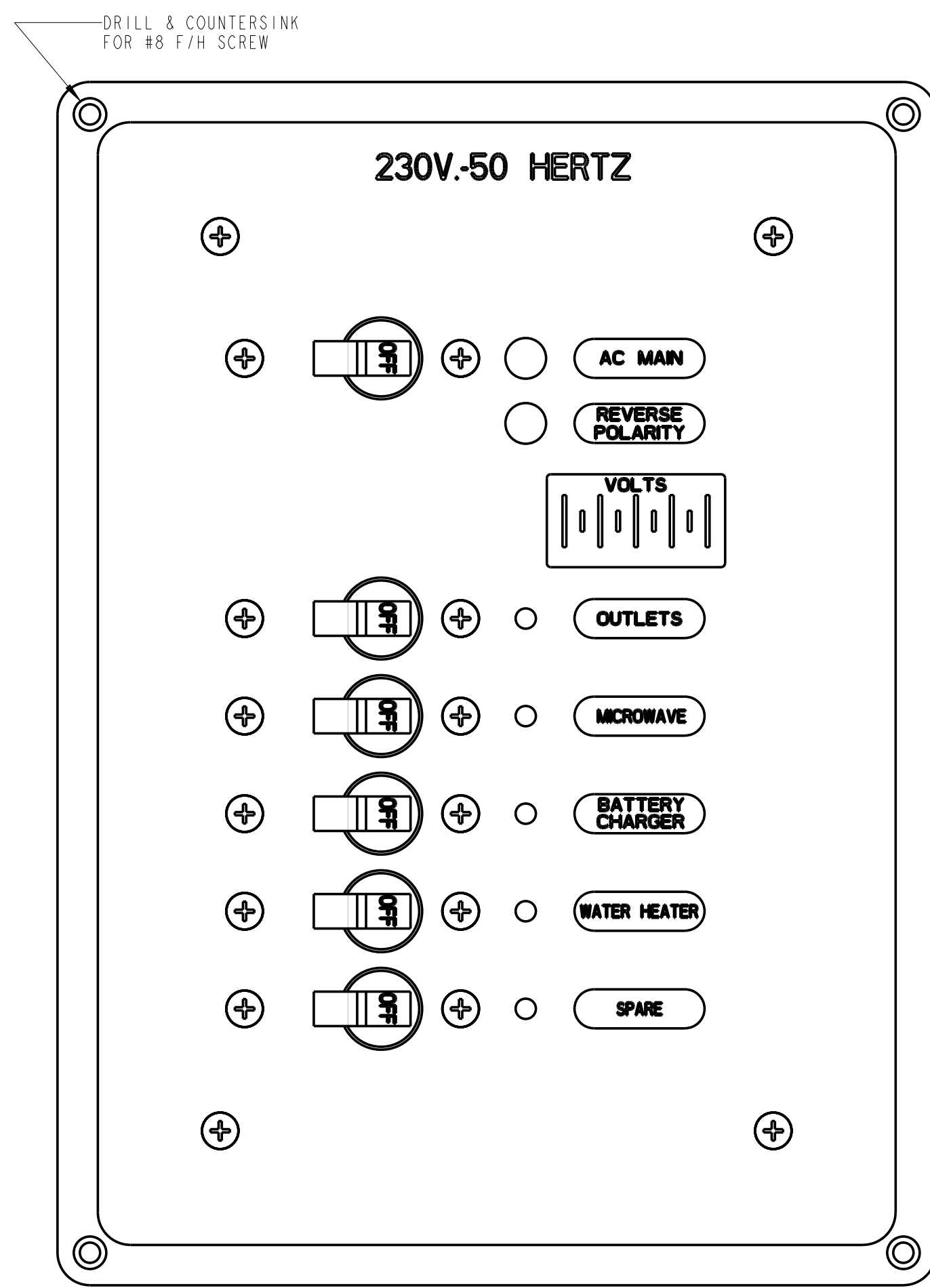
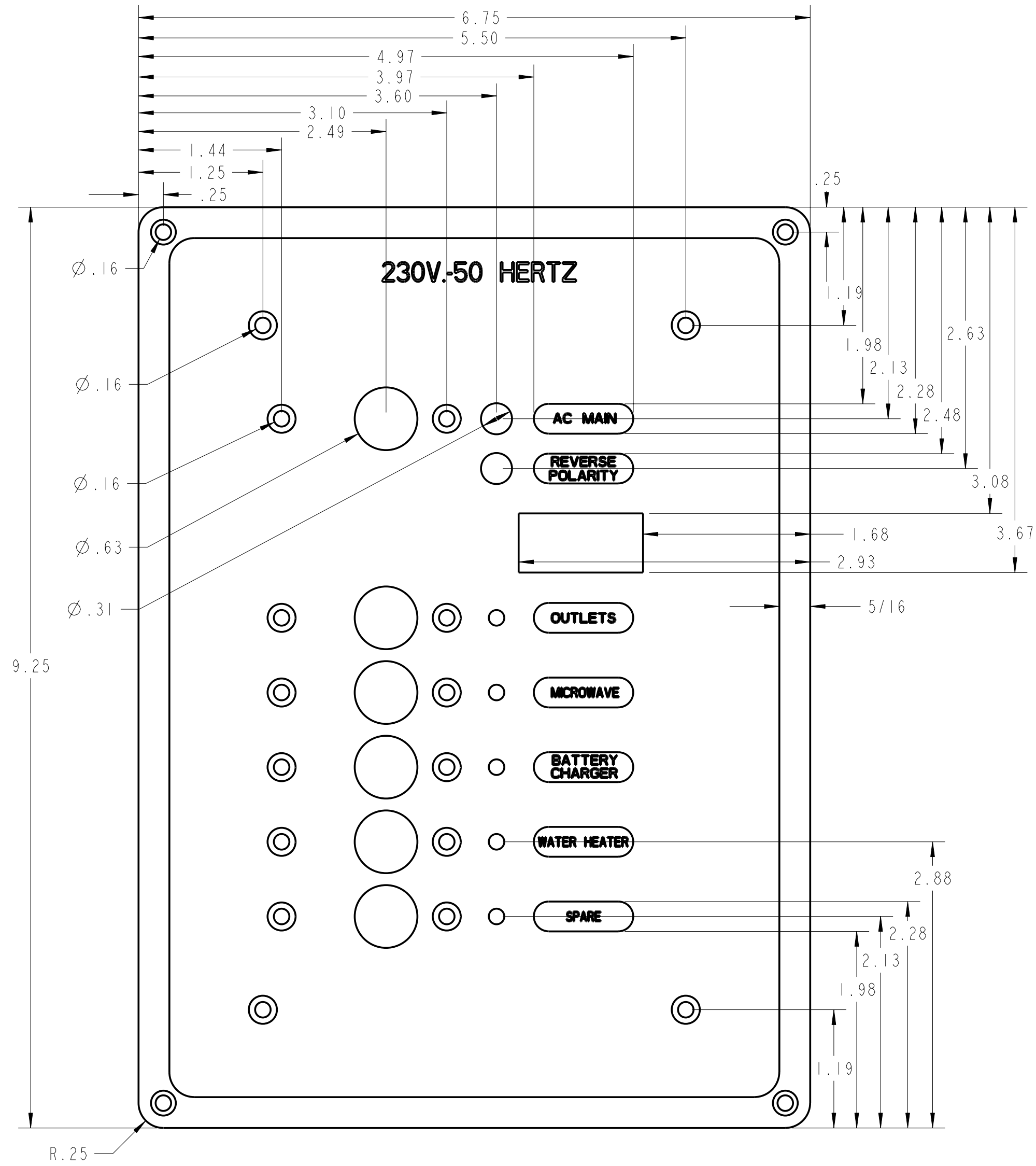
PROPRIETARY INFORMATION THIS DRAWING CONTAINS INFORMATION FOR WHICH HUNTER ENGINEERING HAS PROPRIETARY RIGHTS

HUNTER 31

DRAWING TITLE: **PANEL, 120/230VAC**

DRAWN BY: JLK	DATE: 12-16-04	SHEET: 1	OF: 1
SCALE: 1:00	HUNTER PART NO: 120	REVISION: -	REVISED BY: JLK

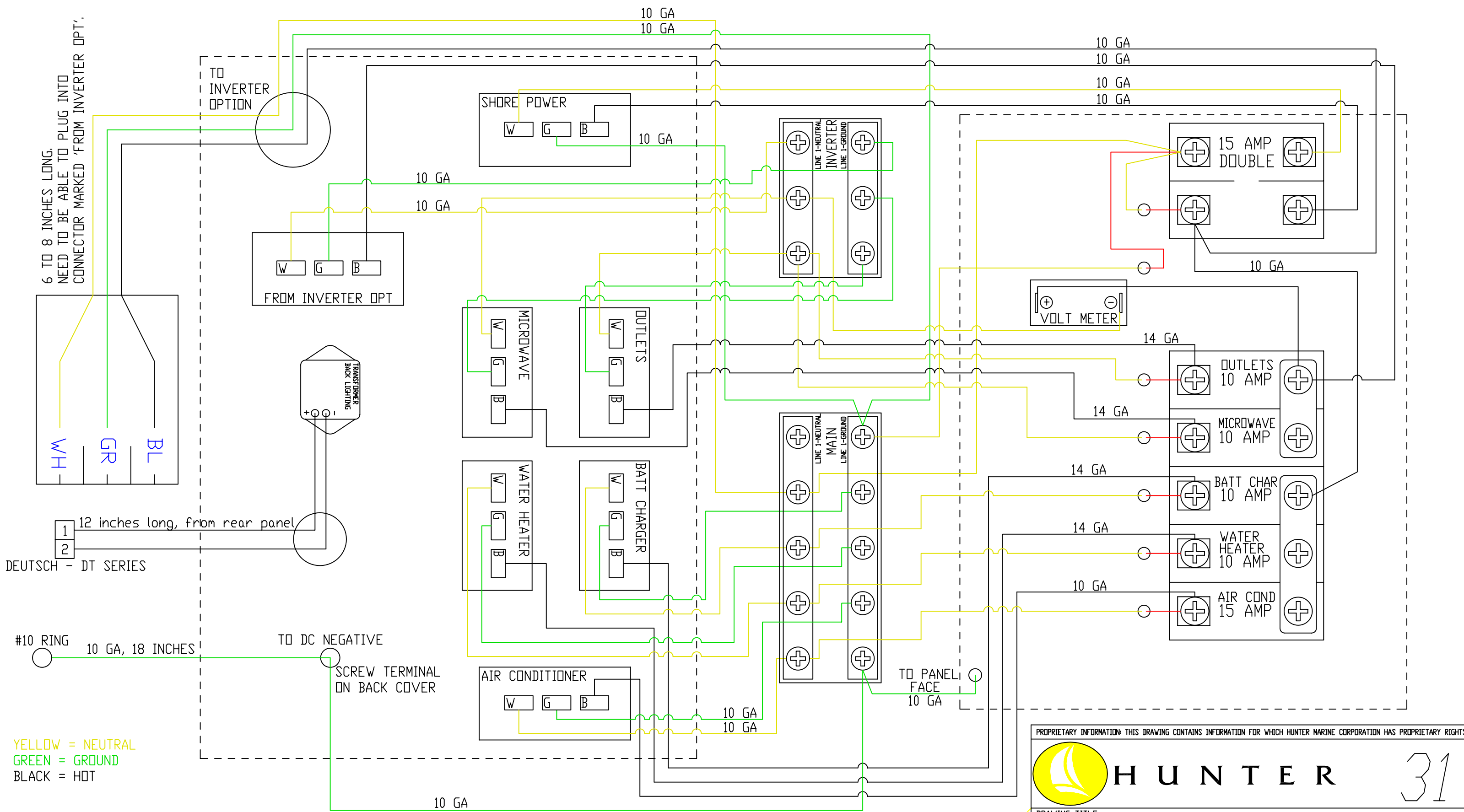
PANEL AC H30 V2



SIDE BACK COVER, 2 EACH ALUMINUM 1/16" THICK

- BREAKER LIST TO BE SUPPLIED WITH PANEL FOR 230V-50 HERTZ VERSION.**
- AC MAIN : 15 AMP
 - OUTLETS : 10 AMP
 - MICROWAVE : 10 AMP
 - BATTERY CHARGER : 10 AMP
 - WATER HEATER : 10 AMP
 - SPARE : 15 AMP

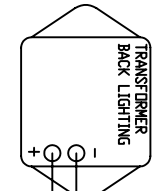
- NOTE:**
1. PANEL MATERIAL - 1/8" ALUMINUM
 2. PANEL COLOR&FINISH - FLAT CARBON BLACK WITH GLOSSY BLACK BORDER
 3. BACK LIGHTING COLOR - BLUE
 4. AC MAIN INDICATOR - GREEN NEON
REVERSE POLARITY - RED NEON
BREAKER INDICATOR LIGHTS - RED LED
 5. BREAKER HANDLE COLOR - BLACK
 6. SEE ELECTRICAL SCHEMATIC FOR BACKSIDE



6 TO 8 INCHES LONG.
NEED TO BE ABLE TO PLUG INTO
CONNECTOR MARKED 'FROM INVERTER OPT'.

TO INVERTER
OPTION

FROM INVERTER OPT



1 12 inches long, from rear panel
2 DEUTSCH - DT SERIES

#10 RING 10 GA, 18 INCHES TO DC NEGATIVE
SCREW TERMINAL ON BACK COVER

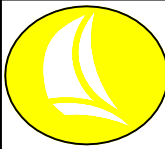
YELLOW = NEUTRAL
GREEN = GROUND
BLACK = HOT

NOTE: BREAKER VALUES SHOWN ARE FOR 230V PANEL VERSION.
NEED PROTECTIVE CAPS FOR BATTERY CHARGER AND AIR CONDITIONER.

BREAKER LIST (230V):
BATTERY CHARGER - 10 AMPS
WATER HEATER - 10 AMPS
OUTLETS - 10 AMPS
MICROWAVE - 10 AMPS
AIR CONDITIONER - 15 AMPS

CHECKED

PROPRIETARY INFORMATION: THIS DRAWING CONTAINS INFORMATION FOR WHICH HUNTER MARINE CORPORATION HAS PROPRIETARY RIGHTS.



HUNTER

31

DRAWING TITLE:
AC PANEL SCHEMATIC, 230V VERSION

DRAWN BY: JLK	DATE: 25-May-05	SHEET 1	OF 1
SCALE: 1.000	HUNTER PART NO. TBD	REVISION A	DRAW # PANEL_AC_H31_230V

LEGEND:

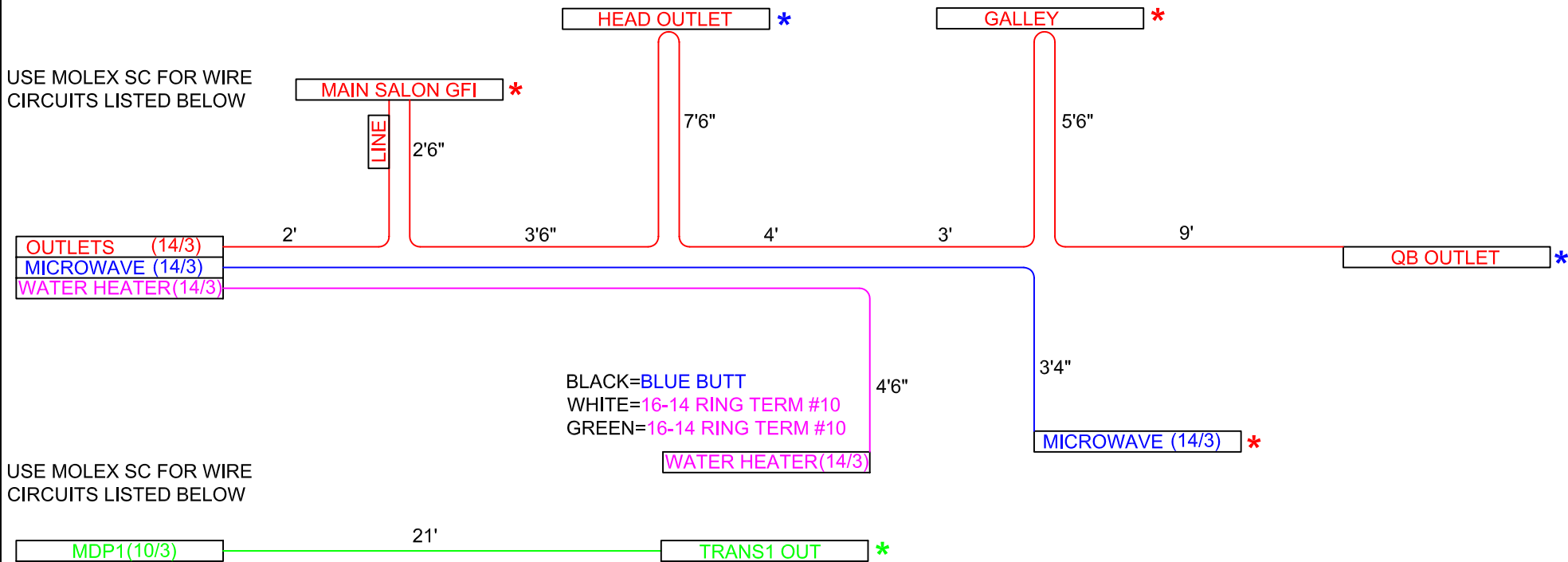
- * = 16-14 CAPTIVE SPADE #8
- * = 12-10 CAPTIVE SPADE #8
- * = 16-14 RING TERM. #10
- * = 12-10 RING TERM. #10
- * = 12-10 RING TERM. 1/4"

NOTE: CONDUIT ALL HARNESSES COMPLETELY

REV. 4/10/2007

31 AC WIRES

USE MOLEX SC FOR WIRE CIRCUITS LISTED BELOW



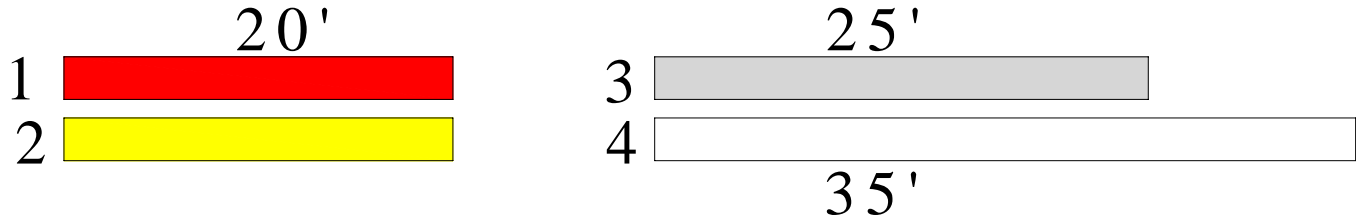
USE MOLEX SC FOR WIRE CIRCUITS LISTED BELOW

- MDP1(10/3) = 21'
- OUTLETS(14/3) = 52'6"
- MICROWAVE(14/3) = 15'10"
- WATER HEATER(14/3) = 14'

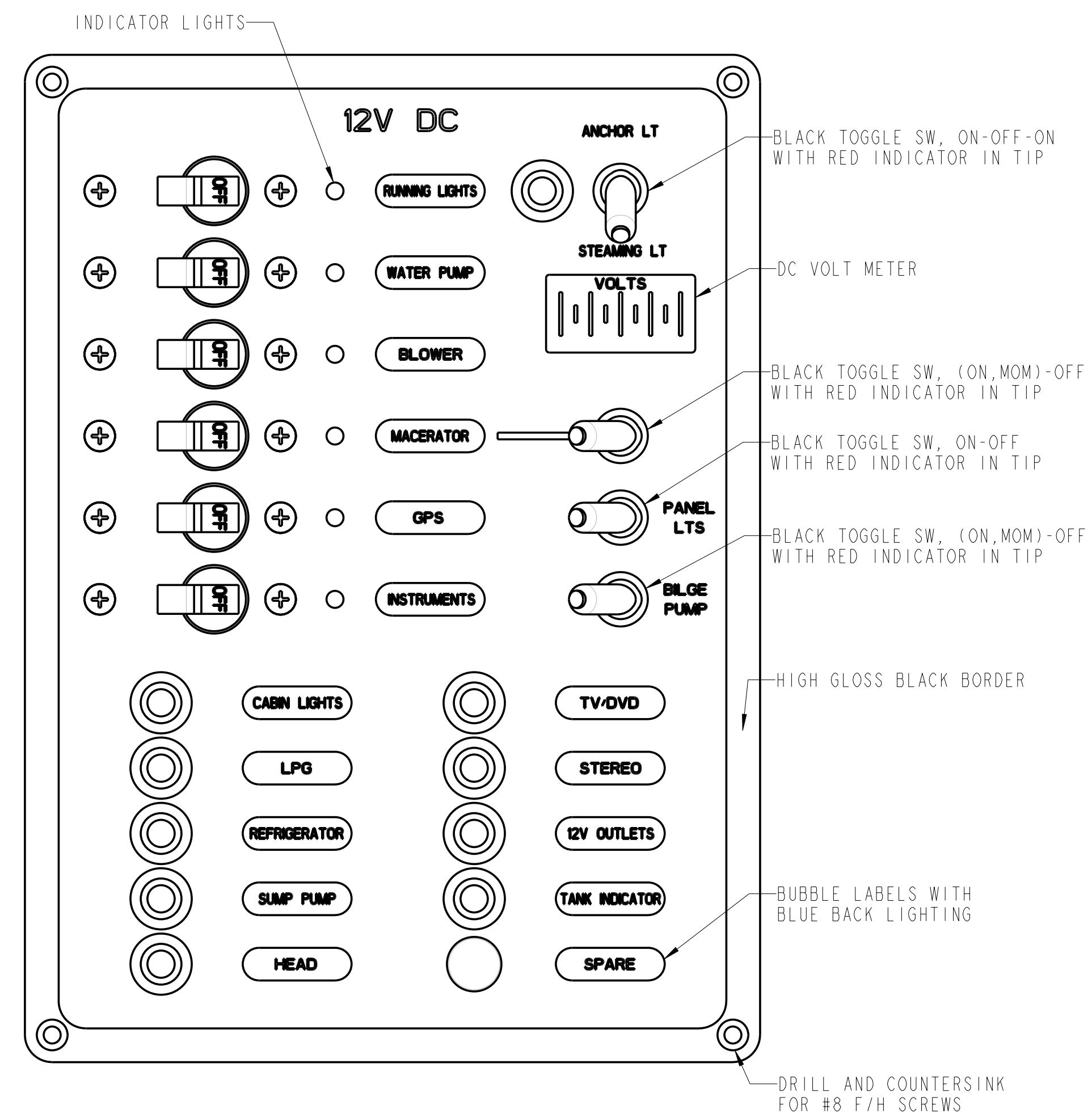
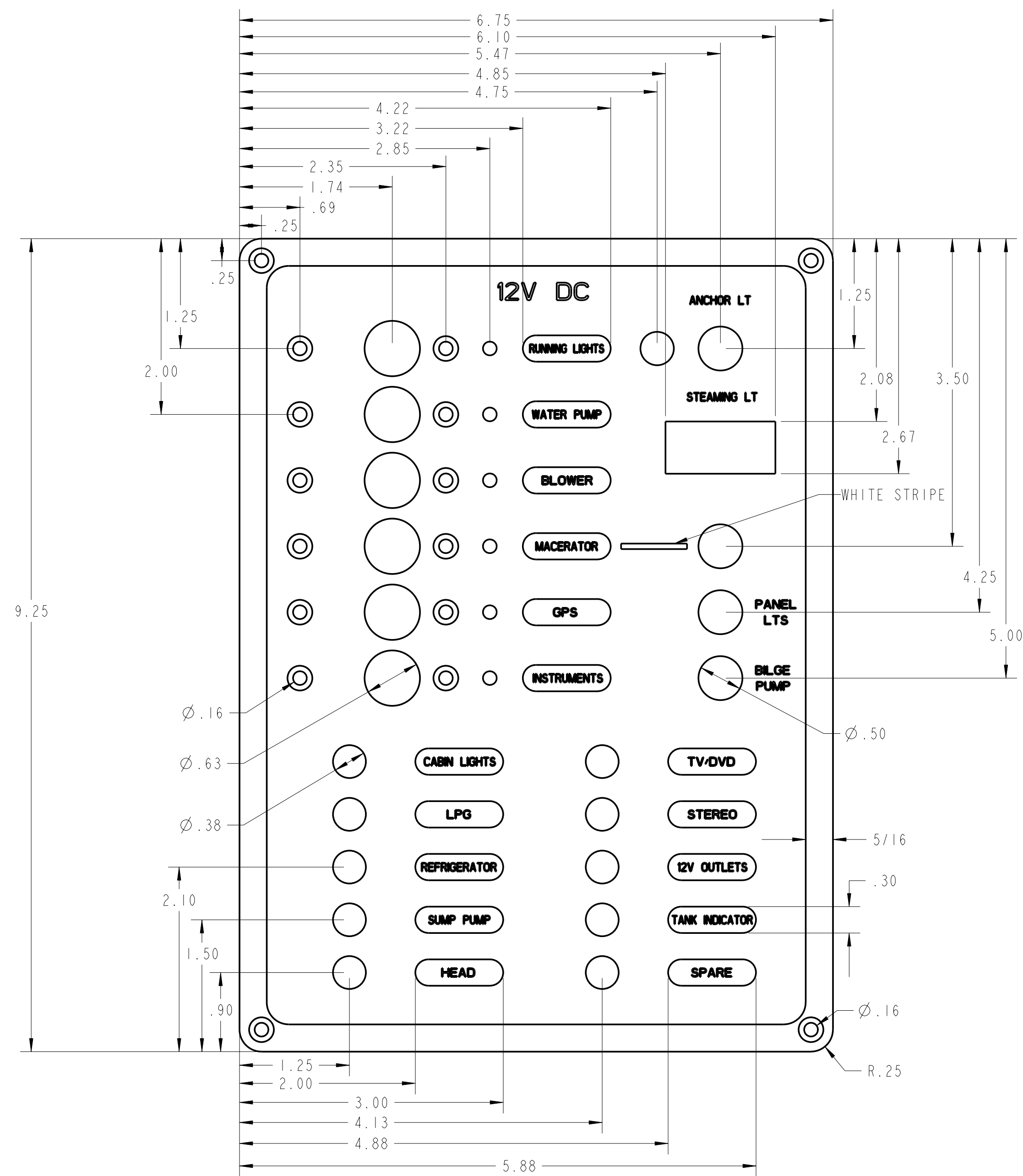
STAGE 24A-MODULE P/N						
	WIRE SIZE	COLOR	LENGTH	EYE	EYE	DESCRIPTION
HOUSE BATTERY #1	1/O	RED	5' 6"	3/8"	3/8"	BATT TO SW-HOUSE1
	1/O	YELLOW	5' 6"	5/16"	1/4"	BATT TO GND-HOUSE1
YANMAR STARTER	2 GA	RED	8' 6"	5/16"	3/8"	START TO SW-YAN
	2 GA	YELLOW	8'	3/8"	1/4"	ENGINE TO GND-YAN
GNDS	6 GA	GREEN/YELLOW	23'	1/4"	3/8"	ARCH GND
	6 GA	GREEN/YELLOW	10' 6"	1/4"	5/8"	CHAINPLATE PORT
	6 GA	GREEN/YELLOW	10' 6"	1/4"	5/8"	CHAINPLATE STBD
	10 GA	GREEN/YELLOW	20'			FUEL FILL GRD
	4 GA	GREEN/YELLOW	30"	1/4"	3/8"	MAST POST TO KEEL
SHORE POWER	10-3	ROMEX	15'			SP1
STAGE 34-DECK RIGGING P/N 1013359						
	WIRE SIZE	COLOR	LENGTH	EYE	EYE	DESCRIPTION
GNDS	6 GA	GREEN/YELLOW	8'	3/8"	1/2"	PEDESTAL GND
OPTIONS						
MODULE STAGE 24A						
	WIRE SIZE	COLOR	LENGTH	EYE	EYE	DESCRIPTION
HOUSE BATTERY #2	1/O	RED	6' 6"	3/8"	3/8"	BATT TO SW-HOUSE2
	1/O	YELLOW	2'	3/8"	3/8"	BATT TO GND-HOUSE2
BATT. CHAR. P/N						SEE DRAWING
INVERTER (120V)	1/O	RED	12"	3/8"	3/8"	INV TO FUSE
	1/O	RED	4'	3/8"	3/8"	FUSE TO SW
	1/O	YELLOW	4'	5/16"	3/8"	INV TO GND
	1/O	GREEN/YELLOW	4'	5/16"	1/4"	INV CASE TO GND
	10-3	ROMEX	7'	MOLEX		INV IN
	10-3	ROMEX	7'	MOLEX		INV OUT
INVERTER (230V)	1/O	RED	1'	3/8"	3/8"	FUSE TO SW
	1/O	GREEN/YELLOW	4'	5/16"	1/4"	INV CASE TO GND
	10-3	ROMEX	7'	MOLEX		INV IN
	10-3	ROMEX	7'	MOLEX		INV OUT
WINDLASS	2 GA	RED	24'	1/4"	5/16"	BREAKER TO BOX-WL
	2 GA	YELLOW	24'	3/8"	5/16"	GND TO BOX-WL
	2 GA	RED	16"	3/8"	1/4"	WINDLASS JUMPER
BILGE KEEL	12 GA	BROWN	12'			BILGE PUMP (+)
	12 GA	YELLOW	12'			BILGE PUMP (-)
AIR CONDITIONING	10-3	ROMEX	18'	MOLEX		AIR COND
	14-3	ROMEX	8'			AC PUMP
OPTIONS						
MODULE STAGE 26A						
	WIRE SIZE	COLOR	LENGTH	EYE	EYE	DESCRIPTION
BATT. CHAR. P/N						SEE DRAWING
ELECTRICAL STAGE 56						
	WIRE SIZE	COLOR	LENGTH	EYE	EYE	DESCRIPTION
WINDLASS	2 GA	RED	1' 6"	5/16"	5/16"	BOX TO MOTOR-WL
	2 GA	RED	1' 6"	5/16"	5/16"	BOX TO MOTOR-WL
	16 GA	YELLOW	1' 6"	5/16"	F-spade	CONTROL BOX NEG.

H31 10/14/2005

TV/DVD



#	EYE	SIZE	EYE	COLOR	LENGTH	DESCRIPTION
1		10 GA		RED	20'	TV/DVD PWR
2		10 GA		YELLOW	20'	TV/DVD NEG.
3		22 GA		4 COND.	25'	PHONE CABLE
4		RG59		COAX	35'	TV CABLE



BREAKER LIST TO BE SUPPLIED WITH PANEL.

- RUNNING LIGHTS : 5 AMPS
- WATER PUMP : 10 AMPS
- BLOWER : 10 AMPS
- MACERATOR : 20 AMPS
- GPS : 5 AMPS
- INSTRUMENTS : 5 AMPS

RESET LIST TO BE SUPPLIED WITH PANEL.

- CABIN LIGHTS : 20 AMPS
- LP GAS : 5 AMPS
- REFRIGERATOR : 15 AMPS
- SUMP PUMP : 10 AMPS
- HEAD : 25 AMPS
- TV/DVD : 10 AMPS
- STEREO : 10 AMPS
- 12V OUTLETS : 15 AMPS
- TANK INDICATOR : 5 AMPS
- SPARE : PLUG
- ANCHOR LIGHT : 5 AMPS
- PANEL LIGHTS : 5 AMPS

- NOTE:
1. PANEL MATERIAL - 1/8" ALUMINUM
 2. PANEL COLOR&FINISH - FLAT CARBON BLACK WITH GLOSSY BLACK BORDER
 3. BACK LIGHTING COLOR - BLUE
 4. BREAKER INDICATOR LIGHTS - RED LED
 5. BREAKER HANDLE COLOR - BLACK
 6. TOGGLE SWITCHES INDICATORS - RED
 7. SEE ELECTRICAL SCHEMATIC FOR BACKSIDE

PROPRIETARY INFORMATION. THIS DRAWING CONTAINS INFORMATION FOR WHICH HUNTER MARINE CORPORATION HAS PROPRIETARY RIGHTS.

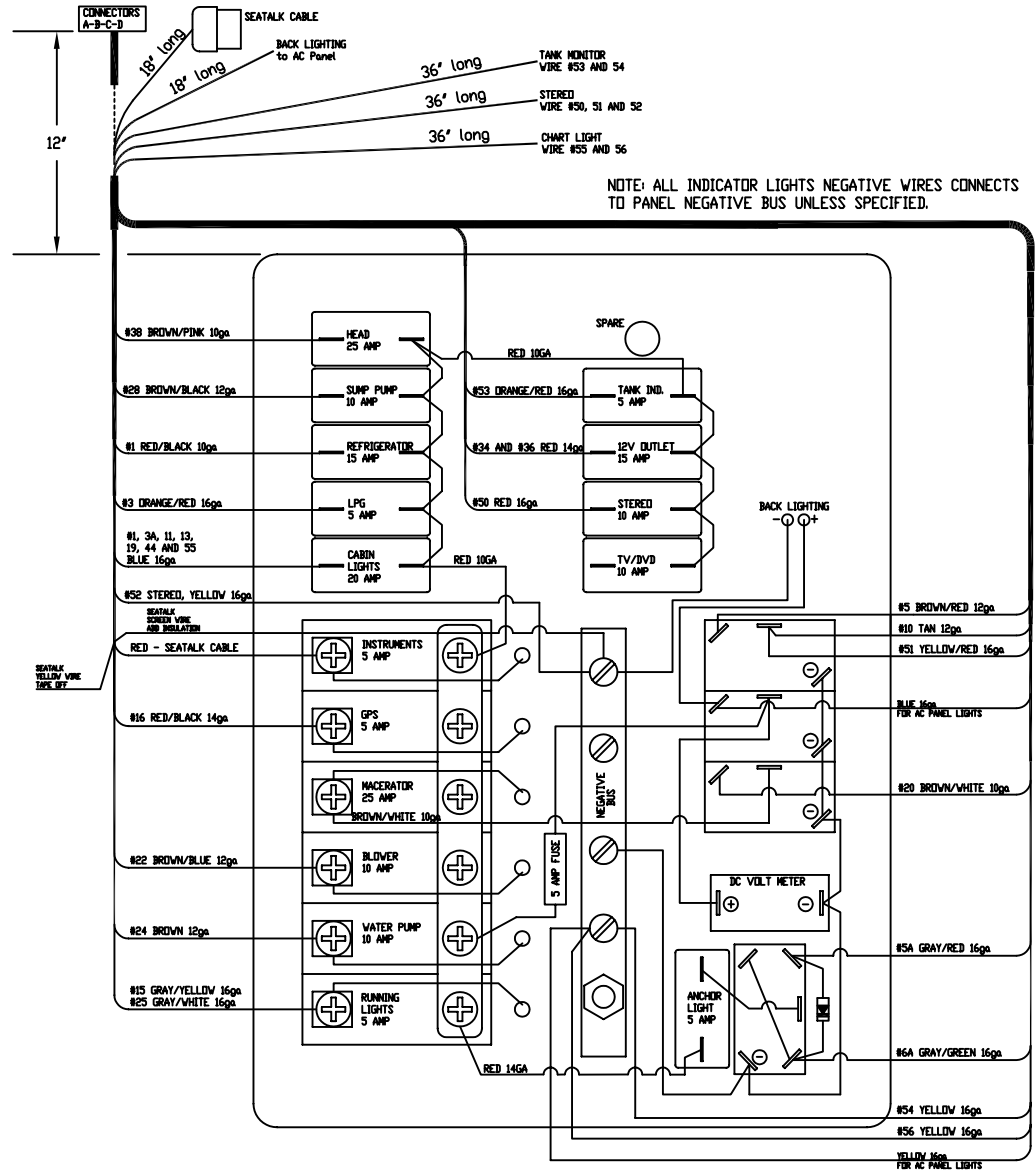
HUNTER 31-33-36

DRAWING TITLE: **PANEL, 12V DC**

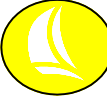
DRAWN BY: JLK	DATE: 18-Aug-06	SHEET 1 OF 1
SCALE: 1000	HUNTER PART NO. TBD	REVISION: -

DRILL AND COUNTERSINK FOR #8 F/H SCREWS

SYMBOL	REVISIONS	DATE	ENG
A	ORIGINAL RELEASE	8/18/06	JLK
B	FLIP FLOP MACERATOR AND GPS	10/3/06	JLK



PROPRIETARY INFORMATION THIS DRAWING CONTAINS INFORMATION FOR WHICH HUNTER MARINE CORPORATION HAS PROPRIETARY RIGHTS.



HUNTER 31

DRAWING TITLE: DC PANEL SCHEMATIC

DRAWN BY: JLK DATE: 18-Aug-06 SHEET 1 OF 1

SCALE: 0.625 HUNTER PART NO. TBD REVISION - DRAW # - - -

CHECKED

DC PANEL CONNECTORS for 31-33-36

All connectors to be female pins with male connectors.

REV. A
8/18/2006

CONN. A	WIRE# (HULL)	WIRED TO ON PANEL	CONN. TYPE
1	#1, 10ga Red/Black, REFRIGERATOR	REFRIGERATOR RESET	Deutsch - DTP Series - 4 pin
2	#38, 10ga Brown/Pink, HEAD	HEAD RESET	
3	#5, 12ga Brown/Red, BILGE MANUAL	BILGE TOGGLE SWITCH	
4	#10, 12ga Tan, BILGE POWER	BILGE TOGGLE SWITCH	

CONN. B	WIRE# (HULL)	WIRED TO ON PANEL	CONN. TYPE
1	#46, 14ga Blue, CABIN LIGHTS	CABIN LIGHT RESET	Deutsch - DT Series - 4 pin
2	#3, 16ga Orange/Red, LPG	LP GAS RESET	
3	#34, 14ga Red, 12V OUTLET	12VDC OUTLET RESET	
4	#36, 14ga Red, 12V OUTLET	12VDC OUTLET RESET	

CONN. C	WIRE# (HULL)	WIRED TO ON PANEL	CONN. TYPE
1	#20, 10ga Brown/White, MACERATOR	MACERATOR TOGGLE SWITCH	Deutsch - DTP Series - 4 pin
2	#24, 12ga Brown, WATER PUMP	WATER PUMP BREAKER	
3	#28, 12ga Brown/Black, SUMP PUMP	SUMP PUMP BREAKER	
4	#22, 12ga Brown/Blue, BLOWER	BLOWER BREAKER	

CONN. D	WIRE# (DECK)	WIRED TO ON PANEL	CONN. TYPE
1	#1, 16ga Blue, MAIN LIGHTS	CABIN LIGHT RESET	Deutsch - DT Series - 12 pin
2	#3A, 16ga Blue, FORWARD LIGHTS	CABIN LIGHT RESET	
3	#5A, 14ga Gray/Red, ANCHOR LIGHT	ANCHOR LIGHT SWITCH	
4	#6A, 14ga Gray/Green, STEAMING LIGHT	STEAMING LIGHT SWITCH	
5	#13, 16ga Blue, PORT AFT LIGHTS	CABIN LIGHT RESET	
6			
7			
8	#11, 16ga Blue, STBD LIGHTS	CABIN LIGHT RESET	
9	#15, 16ga Gray/Yellow, STERN LIGHT	RUNNING LIGHTS BREAKER	
10	#19, 16ga Blue/White, ARCH LIGHT	CABIN LIGHT RESET	
11	#25, 16ga Gray/White, BOW LIGHT	RUNNING LIGHTS BREAKER	
12	#16, 14ga Red/Black, GPS	GPS BREAKER	

CONN. F	WIRE# (DECK)	WIRED TO ON PANEL	CONN. TYPE
1	#1, 16ga Blue, MAIN LIGHTS	CABIN LIGHT BREAKER	Deutsch - DT Series - 12 pin
2	#3A, 16ga Blue, FORWARD LIGHTS	CABIN LIGHT BREAKER	
3	#5A, 14ga Gray/Red, ANCHOR LIGHT	ANCHOR LIGHT BREAKER	
4	#6A, 14ga Gray/Green, STEAMING LIGHT	STEAMING LIGHT BREAKER	
5	#13, 16ga Blue, PORT AFT LIGHTS	CABIN LIGHT BREAKER	
6	#28A, 16ga Red/White, VHF PWR	VHF RADIO BREAKER	
7	#11, 16ga Blue, STBD LIGHTS	CABIN LIGHT BREAKER	
8	#15, 16ga Gray/Yellow, STERN LIGHT	RUNNING LIGHTS BREAKER	
9	#19, 16ga Blue/White, ARCH LIGHT	CABIN LIGHT BREAKER	
10	#25, 16ga Gray/White, BOW LIGHT	RUNNING LIGHTS BREAKER	
11	#27, 16ga Tan, WINDLASS	WINDLASS BREAKER	
12	#16, 16ga Red/Black, GPS	GPS BREAKER	

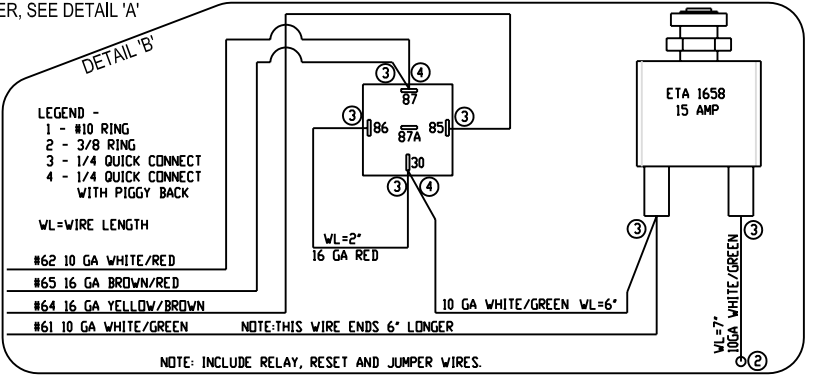
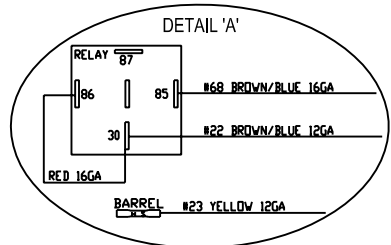
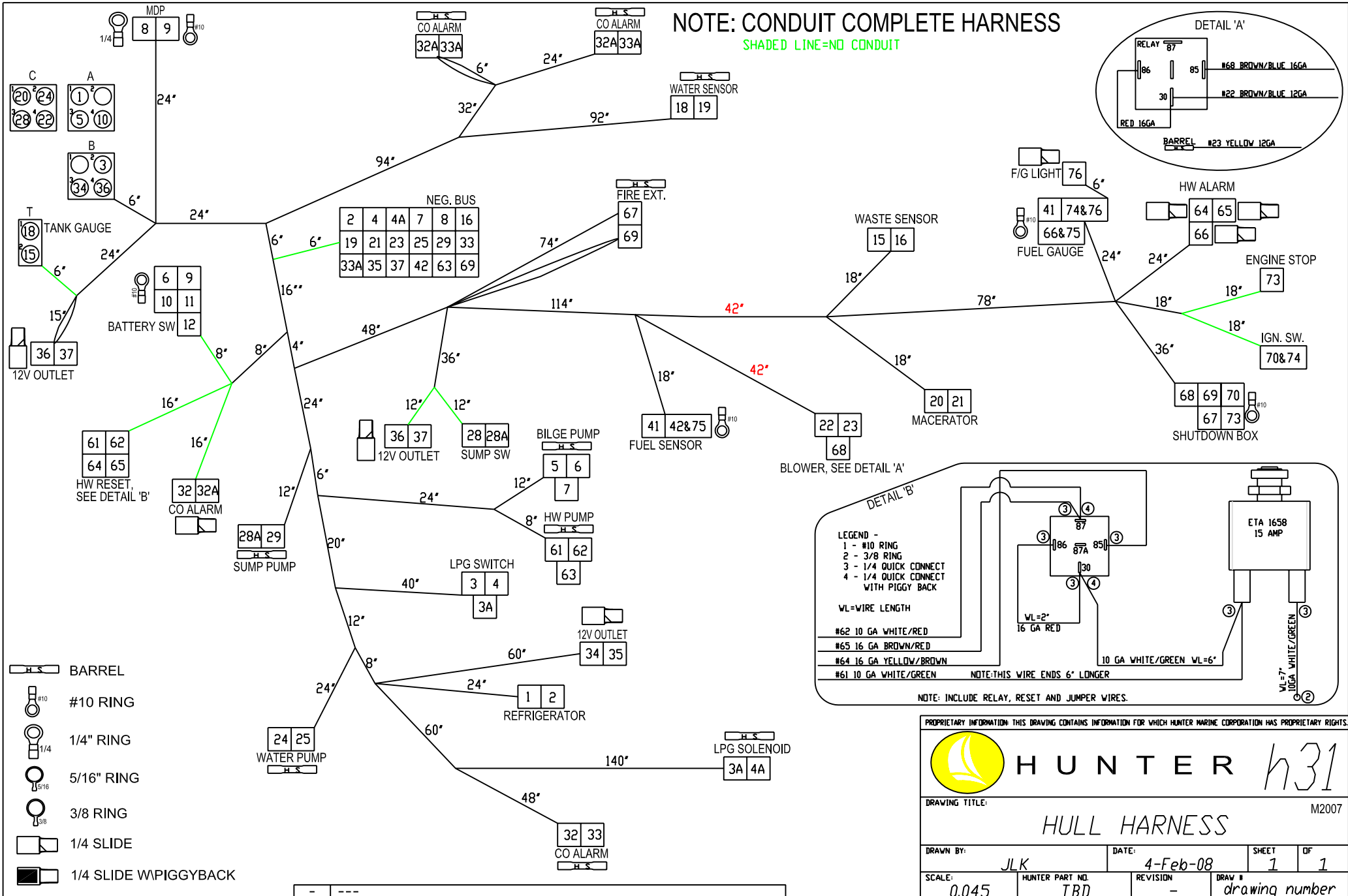
CONN. G	WIRE# (TO TANK MONITOR)	WIRED TO ON PANEL OR OTHER	CONN. TYPE
1	#53, 16ga Red/Orange, TANK MONITOR (+)	TANK DISPLAY BREAKER	Deutsch - DT Series - 2 pin
2	#54, 16ga Yellow, TANK MONITOR (-)	DC NEGATIVE BUS	

CONN. S	WIRE# (STEREO PWR)	WIRED TO ON PANEL	CONN. TYPE
1	#50, 16ga Red, STEREO PWR	STEREO BREAKER	Deutsch - DT Series - 3 pin
2	#51, 16ga Yellow/Red, STEREO MEMORY	center post bilge toggle switch with #5 brown/red wire	
3	#52, 16ga Yellow, STEREO (-)	DC NEGATIVE BUS	

	WIRE#	WIRED TO ON PANEL	
	#55, 16ga Blue, CHART LIGHT (+)	CABIN LIGHT BREAKER, 66" total length	blue butt splice
	#56, 16ga Yellow, CHART LIGHT (-)	DC NEGATIVE BUS, 66" total length	blue butt splice


NOTE: CONDUIT COMPLETE HARNESS

SHADED LINE=NO CONDUIT



- BARREL
- #10 RING
- 1/4" RING
- 5/16" RING
- 3/8 RING
- 1/4 SLIDE
- 1/4 SLIDE WPIGGYBACK

PROPRIETARY INFORMATION: THIS DRAWING CONTAINS INFORMATION FOR WHICH HUNTER MARINE CORPORATION HAS PROPRIETARY RIGHTS.



HUNTER

h31

DRAWING TITLE: HULL HARNESS M2007

DRAWN BY: JLK DATE: 4-Feb-08 SHEET 1 OF 1

SCALE: 0.045 HUNTER PART NO: TBD REVISION: - DRAW # drawing number

HUNTER 31 DC HULL HARNESS				9/20/2006
WIRE#	GAUGE	COLOR	LENGTH	FUNCTION
1	10	RED/BLACK	150"	REFRIGERATION
2	10	YELLOW	120"	REFRIGERATION NEG.
3	16	ORANGE/RED	146"	LPG PANEL SW
4	16	YELLOW	116"	LPG INDICATOR NEG.
3A	16	ORANGE/GREEN	260"	LPG SOLENOID (+)
4A	16	YELLOW	296"	LPG SOLENOID (-)
5	12	BROWN/RED	122"	BILGE MANUAL SW
6	12	BROWN/ORANGE	86"	BILGE AUTO
7	12	YELLOW	92"	BILGE NEG.
8	6	YELLOW	60"	DC MDP NEG.
9	6	ORANGE/RED	86"	DC MDP POWER
10	12	TAN	68"	BILGE POWER
11	8	ORANGE/GREEN	0	BATTERY CHARGER
12	8	ORANGE/RED	0	BATTERY CHARGER
13	8	YELLOW	0	BATTERY CHARGER NEG
15	16	PINK/BLUE	302"	WASTE SENSOR (S)
16	16	YELLOW	248"	WASTE SENSOR (-)
18	16	PINK/BLACK	240"	WATER SENSOR (S)
19	16	YELLOW	198"	WATER SENSOR (-)
20	10	BROWN/WHITE	278"	MACERATOR
21	10	YELLOW	248"	MACERATOR NEG.
22	12	BROWN/BLUE	260"	BLOWER
23	12	YELLOW	230"	BLOWER NEG.
24	12	BROWN	142"	WATER PUMP
25	12	YELLOW	112"	WATER PUMP NEG.
28	12	BROWN/BLACK	152"	SUMP PUMP SW
28A	12	BROWN/BLACK	132"	SUMP PUMP
29	12	YELLOW	62"	SUMP PUMP NEG.
32	16	RED/BLUE	206"	CO DETECTOR
33	16	YELLOW	204"	CO DETECTOR NEG.
32A	16	RED/BLUE	208"	CO DETECTOR
33A	16	YELLOW	174"	CO DETECTOR NEG.
34	12	RED	186"	12V OUTLET
35	12	YELLOW	156"	12V OUTLET NEG.
36	12	RED	230"	12V OUTLET
37	12	YELLOW	260"	12V OUTLET NEG.
41	16	PINK	162"	FUEL SENSOR (S)
42	16	YELLOW	206"	FUEL SENSOR (-)
50	6	YELLOW	0	NEG BUS JUMPER
61	10	WHITE/GREEN	98"	HW PUMP AUTO
62	10	WHITE/RED	92"	HW PUMP MANUAL
63	10	YELLOW	88"	HW PUMP NEG
64	16	YELLOW/BROWN	334"	HW RELAY SW
65	16	BROWN/RED	334"	HW ALARM IND
66	16	YELLOW	48"	HW ALARM NEG
67	16	BLACK/YELLOW	344"	FIRE EXT.
68	16	BROWN/BLUE	174"	BLOWER RELAY
69	16	YELLOW	492"	FIRE EXT. - SHUTDOWN BOX
70	16	RED	72"	IGNITION SWITCH
73	16	WHITE/BROWN	72"	ENGINE STOP
74	16	RED	60"	FUEL GAUGE POWER
75	16	YELLOW	162"	FUEL GAUGE NEGATIVE
76	16	RED	6"	FUEL GAUGE LIGHT

HULL HARNESS CONNECTORS for h31

All connectors to be male pins with female connectors.

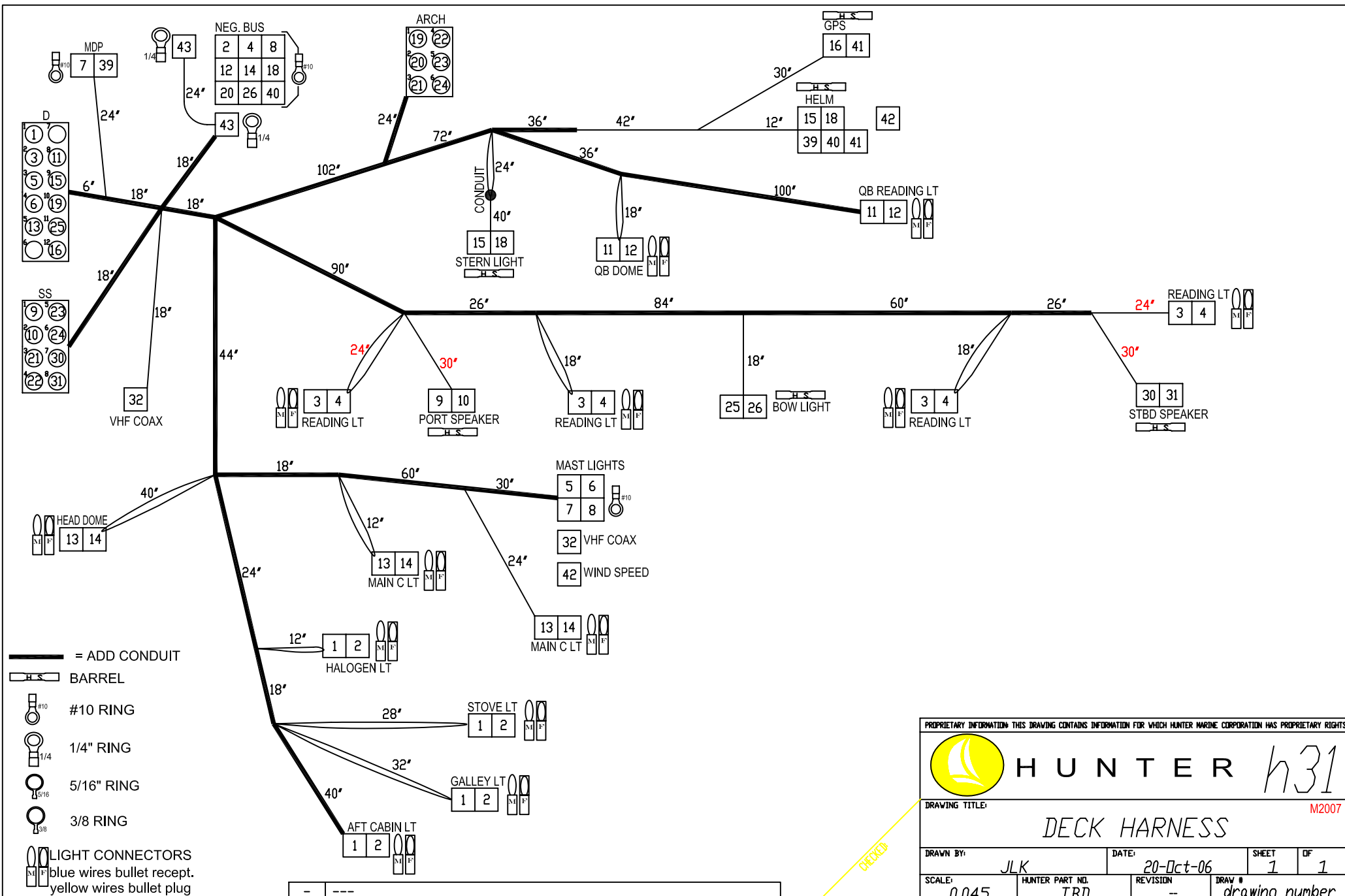
REV. -
8/28/2006

CONN. A	WIRE# (HULL)	NOTES:	CONN. TYPE
1	#1, 10ga Red/Black, REFRIGERATOR		Deutsch - DTP Series - 4 pin
2			
3	#5, 12ga Brown/Red, BILGE MANUAL		
4	#10, 12ga Tan, BILGE POWER		

CONN. B	WIRE# (HULL)		CONN. TYPE
1			Deutsch - DT Series - 4 pin
2	#3, 16ga Orange/Red, LPG		
3	#34, 14ga Red, 12V OUTLET		
4	#36, 14ga Red, 12V OUTLET		

CONN. C	WIRE# (HULL)		CONN. TYPE
1	#20, 10ga Brown/White, MACERATOR		Deutsch - DTP Series - 4 pin
2	#24, 12ga Brown, WATER PUMP		
3	#28, 12ga Brown/Black, SUMP PUMP		
4	#22, 12ga Brown/Blue, BLOWER		

CONN. T	WIRE# (HULL)		CONN. TYPE
1	#18, 16ga Pink/Black, WATER TANK SENSOR		Deutsch - DT Series - 2 pin
2	#15, 16ga Pink/Blue, WASTE TANK SENSOR		



PROPRIETARY INFORMATION THIS DRAWING CONTAINS INFORMATION FOR WHICH HUNTER MARINE CORPORATION HAS PROPRIETARY RIGHTS.

		HUNTER <i>h31</i>	
		M2007	
DRAWING TITLE: DECK HARNESS			
DRAWN BY: <i>JLK</i>	DATE: <i>20-Oct-06</i>	SHEET <i>1</i>	OF <i>1</i>
SCALE: <i>0.045</i>	HUNTER PART NO. <i>TBD</i>	REVISION: <i>-</i>	DRAW # <i>drawing number</i>

HUNTER 31 DECK HARNESS				10/20/2006
WIRE#	GAUGE	COLOR	LENGTH	FUNCTION
1	16	BLUE	312"	CABIN LIGHTS
2	16	YELLOW	306"	CABIN LIGHTS NEG.
3	16	BLUE	472"	CABIN LIGHTS
4	16	YELLOW	466"	CABIN LIGHTS NEG.
5	14	GRAY/RED	194"	ANCHOR LIGHT
6	14	GRAY/GREEN	194"	STEAMING LIGHT
7	16	GRAY	214"	DECK LIGHT
8	10	YELLOW	188"	MAST LIGHTS NEG.
9	16	WHITE/ORANGE	156"	PORT MAIN SPEAKER
10	16	WHITE/YELLOW	156"	PORT MAIN SPEAKER NEG.
11	16	BLUE	388"	CABIN LIGHTS
12	16	YELLOW	382"	CABIN LIGHTS NEG.
13	16	BLUE	292"	CABIN LIGHTS
14	16	YELLOW	286"	CABIN LIGHTS NEG.
15	16	GRAY/YELLOW	394"	STERN LIGHT
16	16	RED/BLACK	324"	GPS
18	16	YELLOW	388"	STERN LIGHT NEG.
19	16	BLUE/WHITE	168"	ARCH LIGHT
20	16	YELLOW	162"	ARCH LIGHT NEG.
21	16	WHITE/PINK	162"	PORT ARCH SPEAKER
22	16	WHITE/YELLOW	162"	PORT ARCH SPEAKER NEG.
23	16	WHITE/GRAY	162"	STBD ARCH SPEAKER
24	16	WHITE/BLACK	162"	STBD ARCH SPEAKER NEG.
25	16	GRAY/WHITE	260"	BOW LIGHT
26	16	YELLOW	254"	BOW LIGHT NEG.
27	16	TAN	0	WINDLASS
30	16	WHITE/BLUE	358"	STBD MAIN SPEAKER
31	16	WHITE/BLACK	358"	STBD MAIN SPEAKER NEG.
32	RG-8X	WHITE	188"	VHF COAX
39	10	RED	324"	AUTO PILOT
40	10	YELLOW	318"	AUTO PILOT NEG.
41	16	YELLOW	42"	GPS NEG
42		WIND SP CABLE	416"	WIND SPEED
43	6	YELLOW	24"	NEG JUMPER

DECK HARNESS CONNECTORS for h31

All connectors to be male pins with female connectors.

8/28/2006

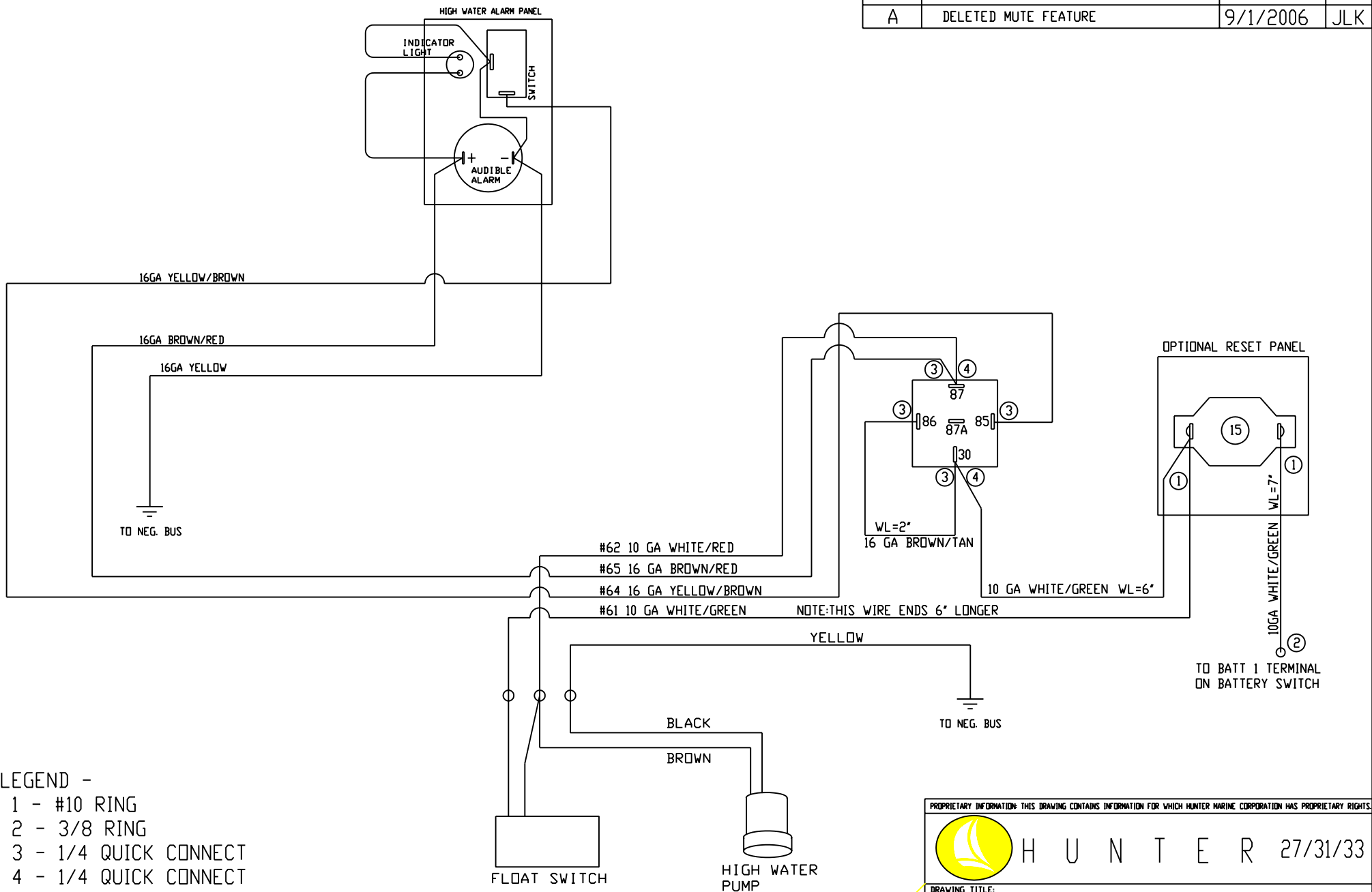
CONN. D	WIRE# (DECK)	NOTES:	CONN. TYPE
1	#1, 16ga blue, CABIN LIGHTS		Deutsch - DT Series - 12 pin
2	#3, 16ga blue, CABIN LIGHTS		
3	#5, 14ga gray/red, ANCHOR LIGHT		
4	#6, 14ga gray/green, STEAMING LIGHT		
5	#13, 16ga blue, CABIN LIGHTS		
6			
7			
8	#11, 16ga blue, STBD LIGHTS		
9	#15, 16ga gray/yellow, STERN LIGHT		
10	#19, 16ga blue/white, ARCH LIGHT		
11	#25, 16ga gray/white, BOW LIGHT		
12	#16, 16ga red/black, GPS		

CONN. SS	WIRE# (TO STEREO)		CONN. TYPE
1	#9, 16ga white/orange, PORT MAIN SPEAKER (+)		Deutsch - DT Series - 8 pin
2	#10, 16ga white/yellow, PORT MAIN SPEAKER (-)		
3	#21, 16ga white/pink, PORT ARCH SPEAKER (+)		
4	#22, 16ga white/yellow, PORT ARCH SPEAKER (-)		
5	#23, 16ga white/gray, STBD ARCH SPEAKER (+)		
6	#24, 16ga white/black, STBD ARCH SPEAKER (-)		
7	#30, 16ga white/blue, STBD MAIN SPEAKER (+)		
8	#31, 16ga white/black, STBD MAIN SPEAKER (-)		

CONN. Arch	WIRE# (TO ARCH)		CONN. TYPE
1	#19, 16ga blue/white, ARCH LIGHT		Deutsch - DT Series - 6 pin
2	#20, 16ga yellow, ARCH LIGHT (-)		
3	#21, 16ga white/pink, PORT ARCH SPEAKER (+)		
4	#22, 16ga white/yellow, PORT ARCH SPEAKER (-)		
5	#23, 16ga white/gray, STBD ARCH SPEAKER (+)		
6	#24, 16ga white/black, STBD ARCH SPEAKER (-)		

No Connector	WIRE# (to spare on panel)		
	#39, 10ga red, AUTOPILOT		
	#7, 16ga gray, DECK LIGHT		


SYMBOL	REVISIONS	DATE	ENG
A	DELETED MUTE FEATURE	9/1/2006	JLK



- LEGEND -
- 1 - #10 RING
 - 2 - 3/8 RING
 - 3 - 1/4 QUICK CONNECT
 - 4 - 1/4 QUICK CONNECT WITH PIGGY BACK

WL=WIRE LENGTH

PROPRIETARY INFORMATION: THIS DRAWING CONTAINS INFORMATION FOR WHICH HUNTER MARINE CORPORATION HAS PROPRIETARY RIGHTS

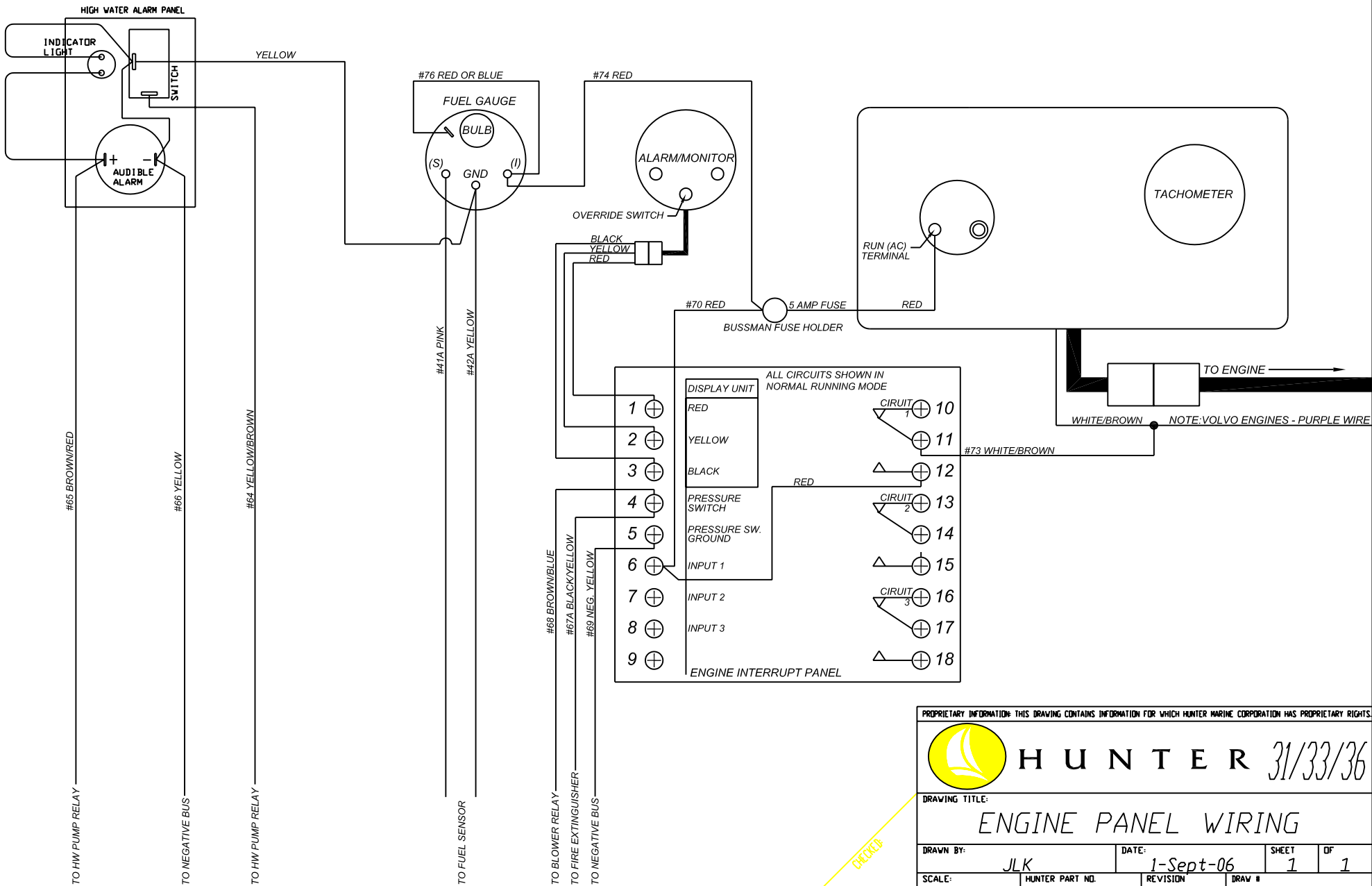


H U N T E R 27/31/33

DRAWING TITLE:
HIGH WATER BILGE PUMP SCHEMATIC

DRAWN BY: JLK	DATE: 6/28/2006	SHEET	OF
SCALE:	HUNTER PART NO.	REVISION	DRAW #

CHECKED



PROPRIETARY INFORMATION: THIS DRAWING CONTAINS INFORMATION FOR WHICH HUNTER MARINE CORPORATION HAS PROPRIETARY RIGHTS.



HUNTER 31/33/36

DRAWING TITLE:

ENGINE PANEL WIRING

DRAWN BY: JLK	DATE: 1-Sept-06	SHEET 1	OF 1
SCALE: 0.045	HUNTER PART NO. TBD	REVISION B	DRAW #

CHECKED