

33

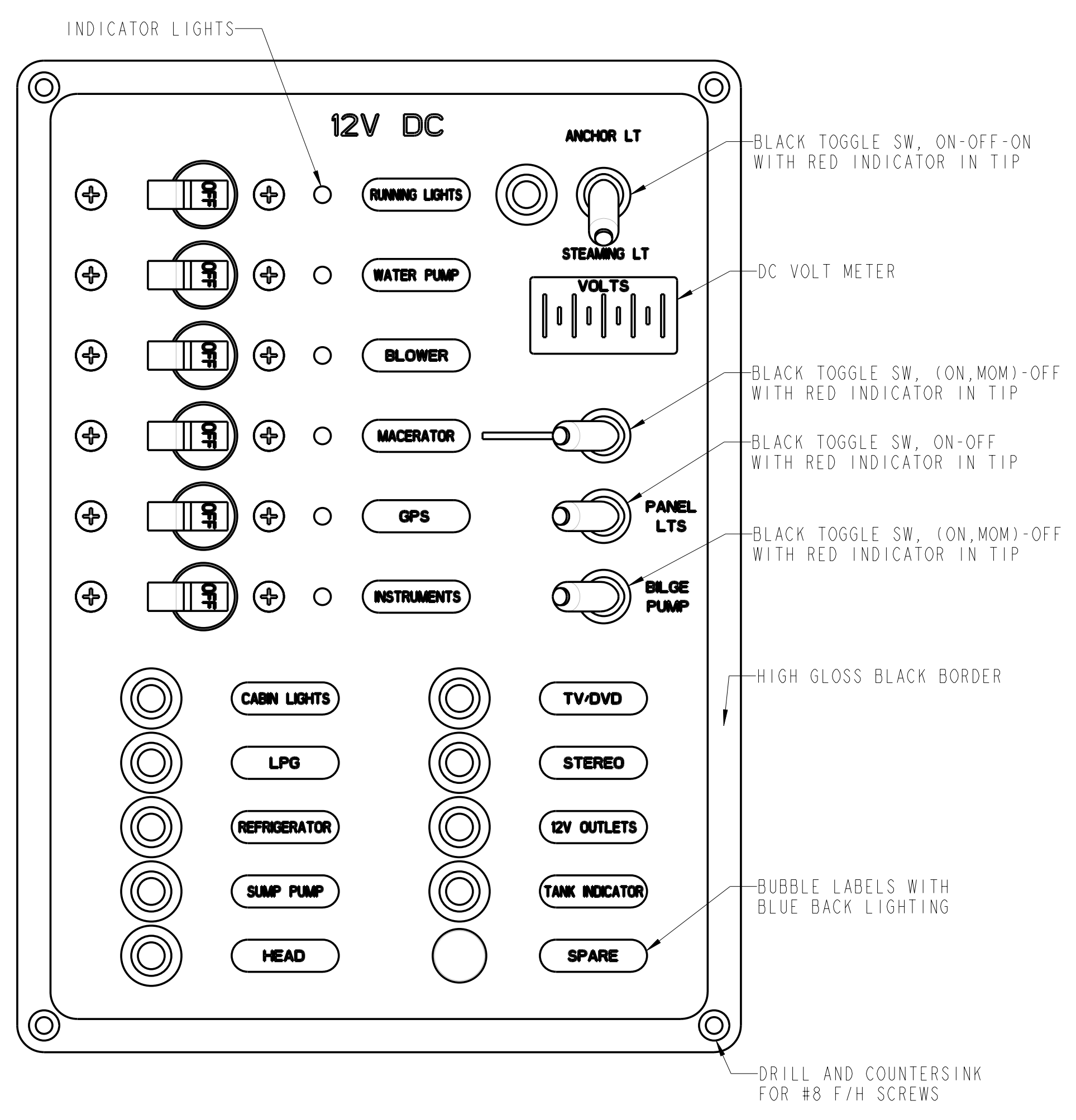
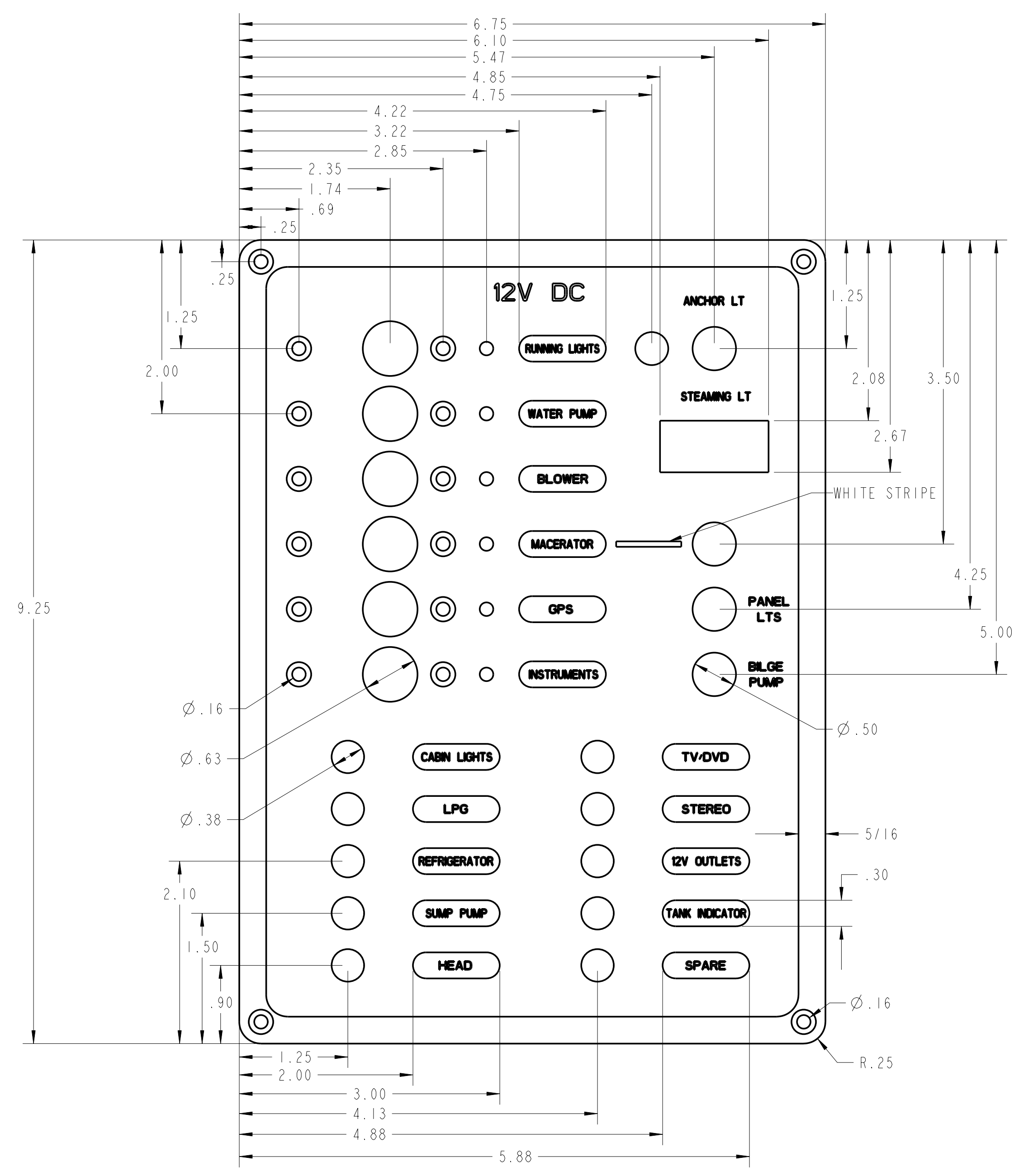
SCHEMATICS

2/29/2008

INDEX

PAGE

3. *DC Panel*
4. *DC Panel Schematic*
5. *DC Panel Connectors*
7. *AC Panel - Single*
8. *AC Panel Schematic – Single*
9. *AC Panel – 230V*
10. *AC Panel Schematic – 230V*
11. *Misc. Harness Adapters*
12. *Hull Harness*
13. *Hull Harness Connectors*
14. *Hull Harness Wire List*
15. *Deck Harness*
16. *Deck Harness Connectors*
17. *Deck Harness Wire List*
18. *AC Wire Kit*
19. *Misc. Wire Kits*
20. *TV-DVD Option Wire Kit*
21. *Engine Panel Wiring Schematic*
22. *Auto Fire Ext. System Schematic*
23. *High Water Pump Option Schematic*
24. *Lighting Layout*



BREAKER LIST TO BE SUPPLIED WITH PANEL.

- RUNNING LIGHTS : 5 AMPS
- WATER PUMP : 10 AMPS
- BLOWER : 10 AMPS
- MACERATOR : 20 AMPS
- GPS : 5 AMPS
- INSTRUMENTS : 5 AMPS

RESET LIST TO BE SUPPLIED WITH PANEL.

- CABIN LIGHTS : 20 AMPS
- LP GAS : 5 AMPS
- REFRIGERATOR : 15 AMPS
- SUMP PUMP : 10 AMPS
- HEAD : 25 AMPS
- TV/DVD : 10 AMPS
- STEREO : 10 AMPS
- 12V OUTLETS : 15 AMPS
- TANK INDICATOR : 5 AMPS
- SPARE : PLUG
- ANCHOR LIGHT : 5 AMPS
- PANEL LIGHTS : 5 AMPS

NOTE:
 1. PANEL MATERIAL - 1/8" ALUMINUM
 2. PANEL COLOR&FINISH - FLAT CARBON BLACK WITH GLOSSY BLACK BORDER
 3. BACK LIGHTING COLOR - BLUE
 4. BREAKER INDICATOR LIGHTS - RED LED
 5. BREAKER HANDLE COLOR - BLACK
 6. TOGGLE SWITCHES INDICATORS - RED
 7. SEE ELECTRICAL SCHEMATIC FOR BACKSIDE

PROPRIETARY INFORMATION. THIS DRAWING CONTAINS INFORMATION FOR WHICH HUNTER MARINE CORPORATION HAS PROPRIETARY RIGHTS.

HUNTER 31-33-36

DRAWING TITLE: **PANEL, 12V DC**

DATE: 18-Aug-06

SCALE: 1000

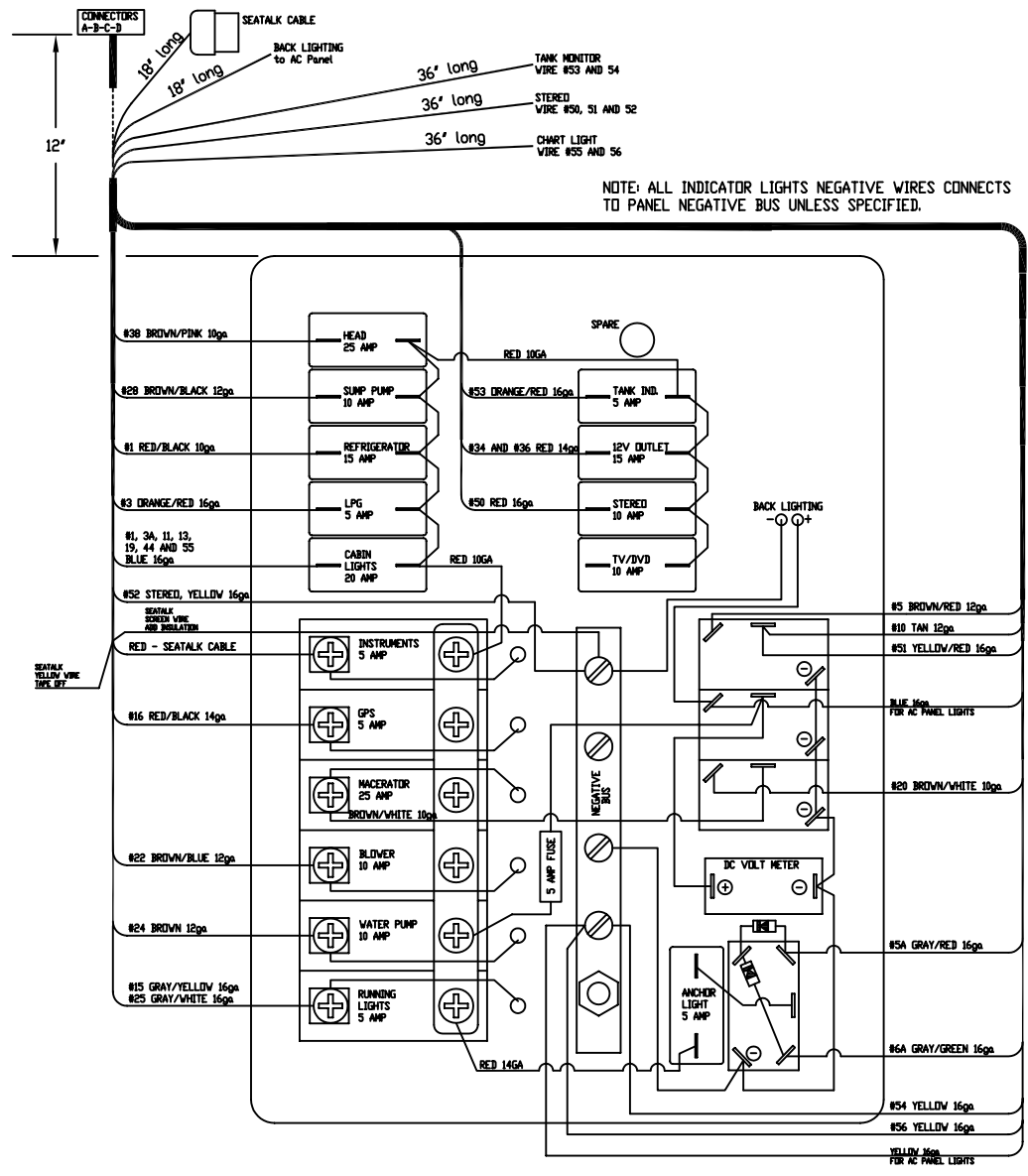
DRAWN BY: JLK

REVISION: TBD

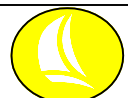
SHEET 1 OF 1

PANEL 12VDC 31-33-36

SYMBOL	REVISIONS	DATE	ENG
A	ORIGINAL RELEASE	8/18/06	JLK
B	FLIP FLOP MACERATOR AND GPS	10/3/06	JLK
C	ADD SECOND DIODE TO ANCHOR LIGHT SWITCH	4/26/07	JLK
D	REDIRECT SECOND DIODE	5/3/07	JLK



PROPRIETARY INFORMATION THIS DRAWING CONTAINS INFORMATION FOR WHICH HUNTER MARINE CORPORATION HAS PROPRIETARY RIGHTS.



HUNTER 33-36

DRAWING TITLE: DC PANEL SCHEMATIC

DRAWN BY: JLK DATE: 18-Aug-06 SHEET 1 OF 1

SCALE: 0.625 HUNTER PART NO. TBD REVISION - DRAW # - - -

CHECKED

DC PANEL CONNECTORS for 31-33-36

All connectors to be female pins with male connectors.

REV. A
8/18/2006

CONN. A	WIRE# (HULL)	WIRED TO ON PANEL	CONN. TYPE
1	#1, 10ga Red/Black, REFRIGERATOR	REFRIGERATOR RESET	Deutsch - DTP Series - 4 pin
2	#38, 10ga Brown/Pink, HEAD	HEAD RESET	
3	#5, 12ga Brown/Red, BILGE MANUAL	BILGE TOGGLE SWITCH	
4	#10, 12ga Tan, BILGE POWER	BILGE TOGGLE SWITCH	

CONN. B	WIRE# (HULL)	WIRED TO ON PANEL	CONN. TYPE
1	#46, 14ga Blue, CABIN LIGHTS	CABIN LIGHT RESET	Deutsch - DT Series - 4 pin
2	#3, 16ga Orange/Red, LPG	LP GAS RESET	
3	#34, 14ga Red, 12V OUTLET	12VDC OUTLET RESET	
4	#36, 14ga Red, 12V OUTLET	12VDC OUTLET RESET	

CONN. C	WIRE# (HULL)	WIRED TO ON PANEL	CONN. TYPE
1	#20, 10ga Brown/White, MACERATOR	MACERATOR TOGGLE SWITCH	Deutsch - DTP Series - 4 pin
2	#24, 12ga Brown, WATER PUMP	WATER PUMP BREAKER	
3	#28, 12ga Brown/Black, SUMP PUMP	SUMP PUMP BREAKER	
4	#22, 12ga Brown/Blue, BLOWER	BLOWER BREAKER	

CONN. D	WIRE# (DECK)	WIRED TO ON PANEL	CONN. TYPE
1	#1, 16ga Blue, MAIN LIGHTS	CABIN LIGHT RESET	Deutsch - DT Series - 12 pin
2	#3A, 16ga Blue, FORWARD LIGHTS	CABIN LIGHT RESET	
3	#5A, 14ga Gray/Red, ANCHOR LIGHT	ANCHOR LIGHT SWITCH	
4	#6A, 14ga Gray/Green, STEAMING LIGHT	STEAMING LIGHT SWITCH	
5	#13, 16ga Blue, PORT AFT LIGHTS	CABIN LIGHT RESET	
6			
7			
8	#11, 16ga Blue, STBD LIGHTS	CABIN LIGHT RESET	
9	#15, 16ga Gray/Yellow, STERN LIGHT	RUNNING LIGHTS BREAKER	
10	#19, 16ga Blue/White, ARCH LIGHT	CABIN LIGHT RESET	
11	#25, 16ga Gray/White, BOW LIGHT	RUNNING LIGHTS BREAKER	
12	#16, 14ga Red/Black, GPS	GPS BREAKER	

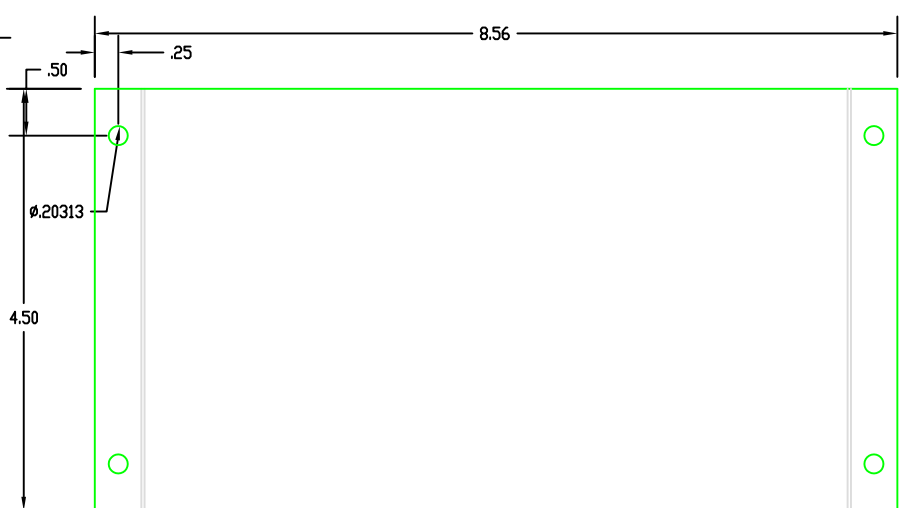
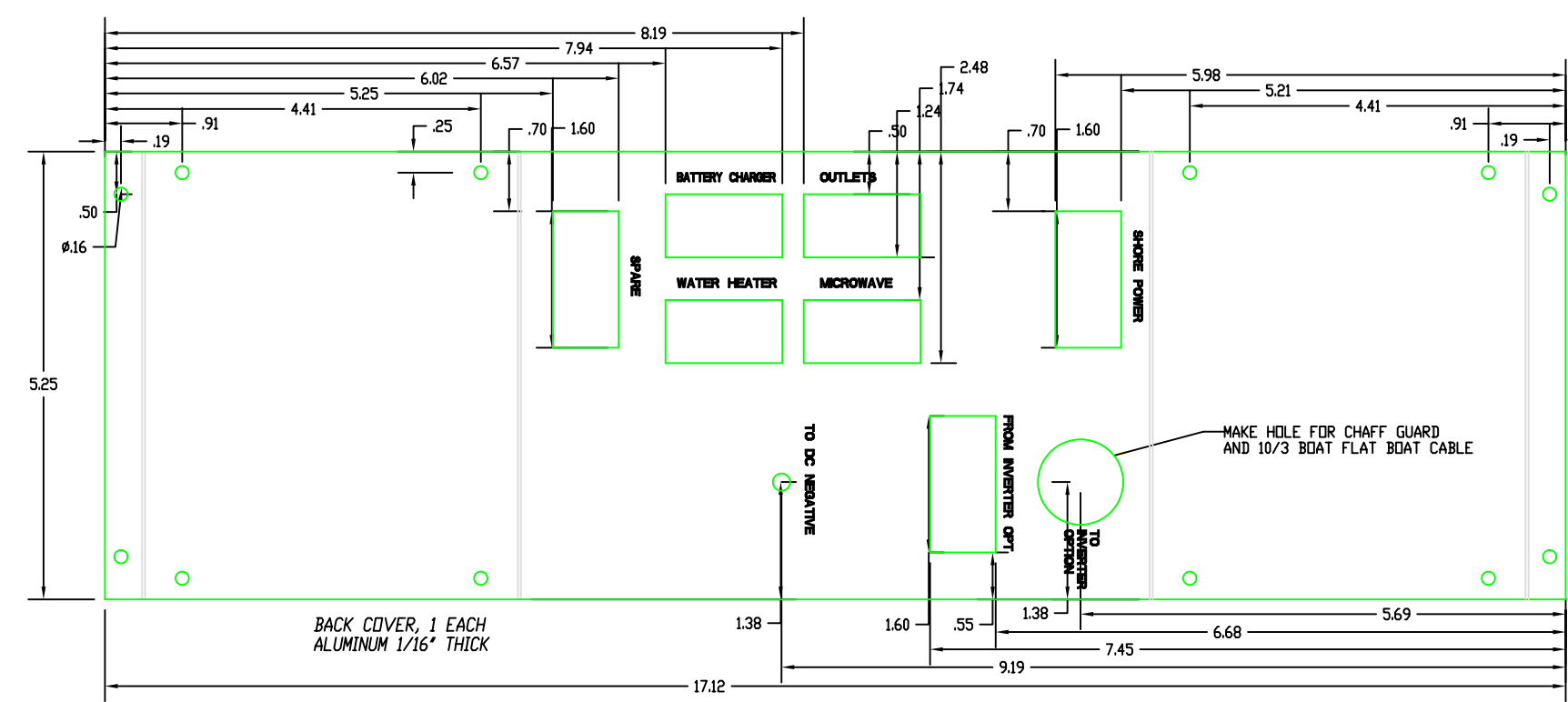
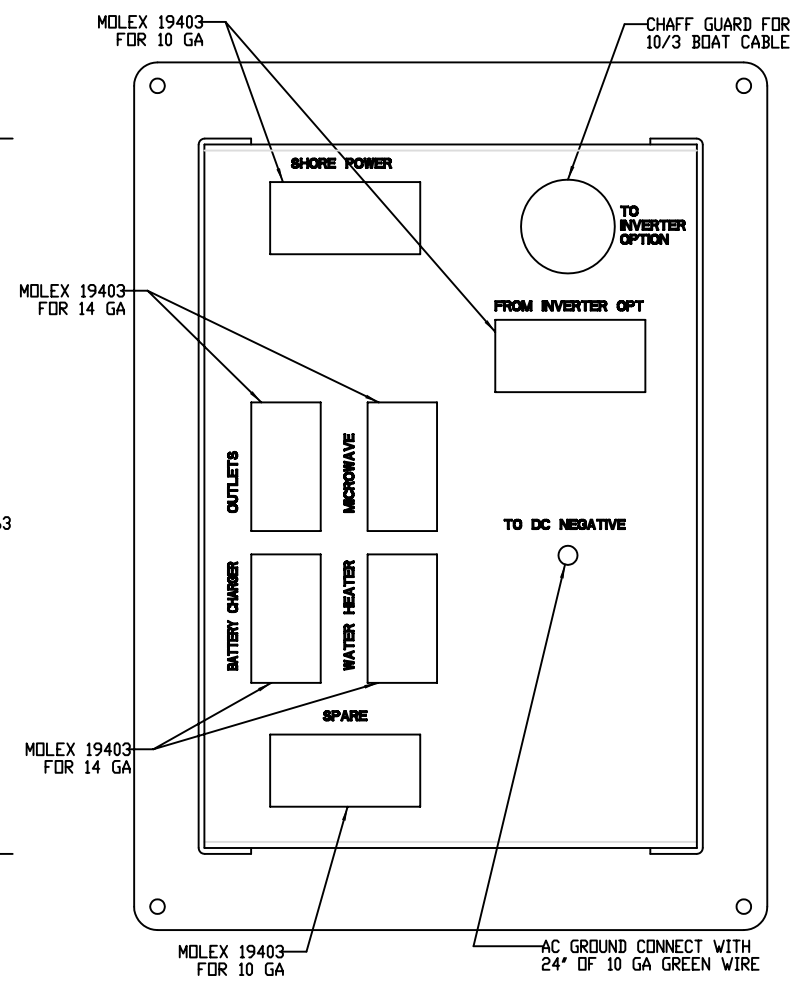
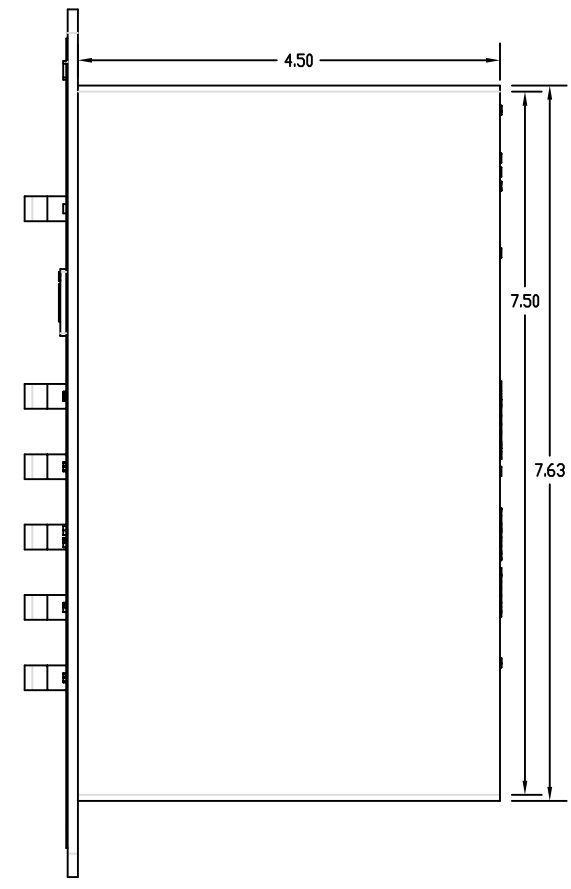
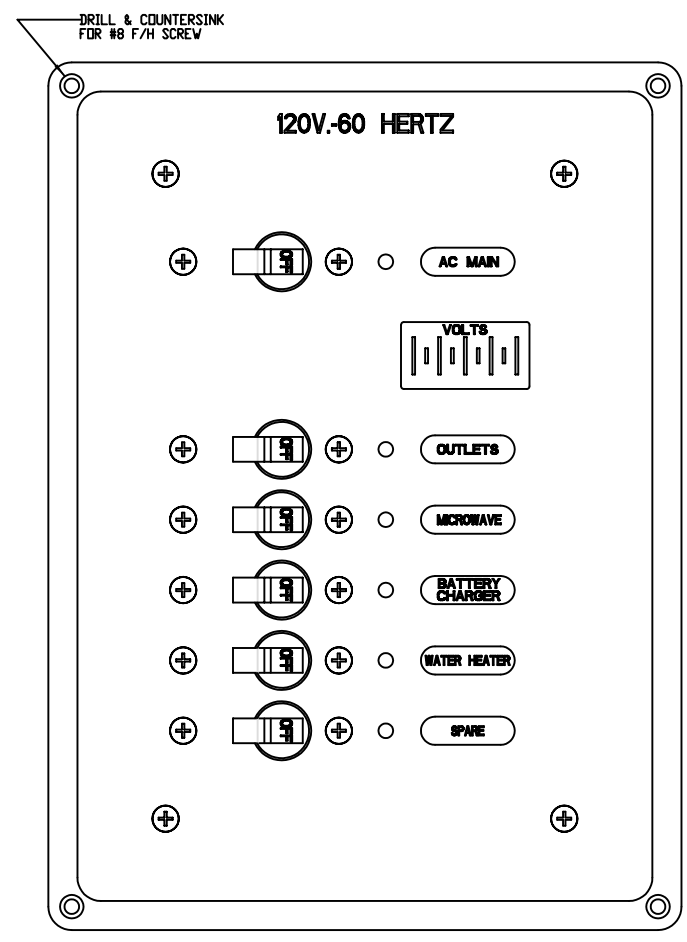
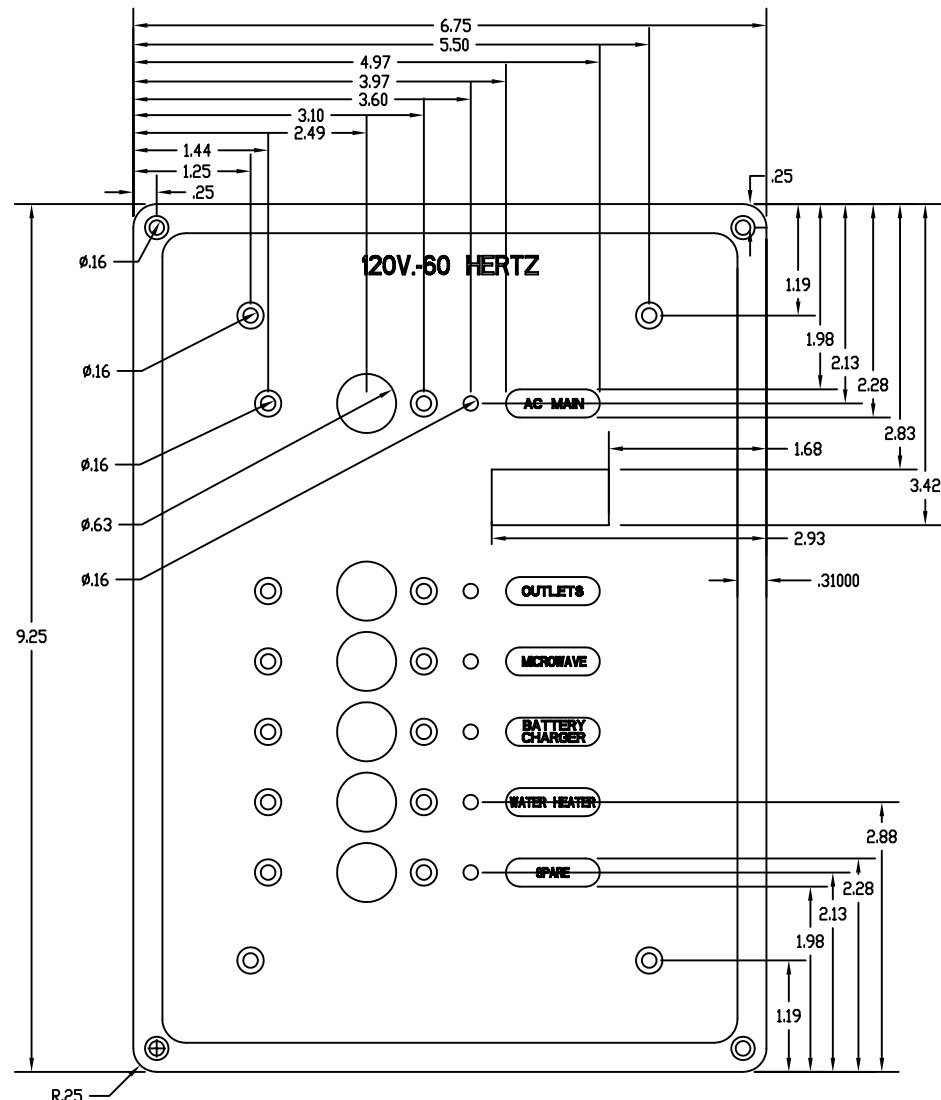
	WIRE# (PANEL TO PANEL)	WIRED TO ON PANEL	
	16ga Blue, PANEL LIGHTS	PANEL LIGHT BREAKER	
	16ga Yellow, PANEL LIGHTS (-)	DC NEGATIVE BUS	

	WIRE# (TO TANK MONITOR)	WIRED TO ON PANEL OR OTHER	
	#53, 16ga Red/Orange, TANK MONITOR (+)	TANK DISPLAY RESET	
	#54, 16ga Yellow, TANK MONITOR (-)	DC NEGATIVE BUS	

	WIRE# (STEREO PWR)	WIRED TO ON PANEL	
	#50, 16ga Red, STEREO PWR	STEREO RESET	
	#51, 16ga Yellow/Red, STEREO MEMORY	center post bilge toggle switch with #5 brown/red wire	
	#52, 16ga Yellow, STEREO (-)	DC NEGATIVE BUS	

	WIRE# (CHART LIGHT)	WIRED TO ON PANEL	
	#55, 16ga Blue, CHART LIGHT (+)	CABIN LIGHT RESET	
	#56, 16ga Yellow, CHART LIGHT (-)	DC NEGATIVE BUS	

SYMBOL	REVISIONS	DATE	ENG
A	CHANGE AIR CONDITIONER TO SPARE	12/16/2004	JLK
B	DELETE MOLEX CONNECTOR KIT	3/5/2007	JLK



SIDE BACK COVER, 2 EACH ALUMINUM 1/16" THICK

- BREAKER LIST TO BE SUPPLIED WITH PANEL FOR 120V-60 HERTZ VERSION:
- AC MAIN .30 AMP
 - OUTLETS .15 AMP
 - MICROWAVE .15 AMP
 - BATTERY CHARGER .15 AMP
 - WATER HEATER .15 AMP
 - SPARE .25 AMP

- NOTE:
1. PANEL MATERIAL - 1/8" ALUMINUM
 2. PANEL COLOR/FINISH - FLAT CARBON BLACK WITH GLOSSY BLACK BORDER
 3. BACK LIGHTING COLOR - RED LED
 4. AC MAIN INDICATOR - RED LED
 5. BREAKER INDICATOR LIGHTS - RED LED
 6. BREAKER HANDLE COLOR - BLACK
 6. SEE ELECTRICAL SCHEMATIC FOR BACKSIDE

PROPERTY INFORMATION THIS DRAWING CONTAINS INFORMATION FOR WHICH HUNTERA WARE CORPORATION HAS PROPRIETARY RIGHTS

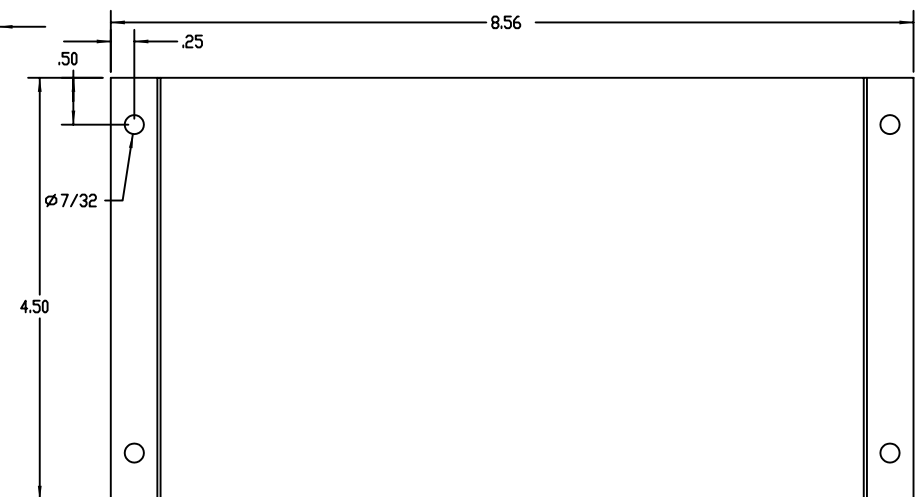
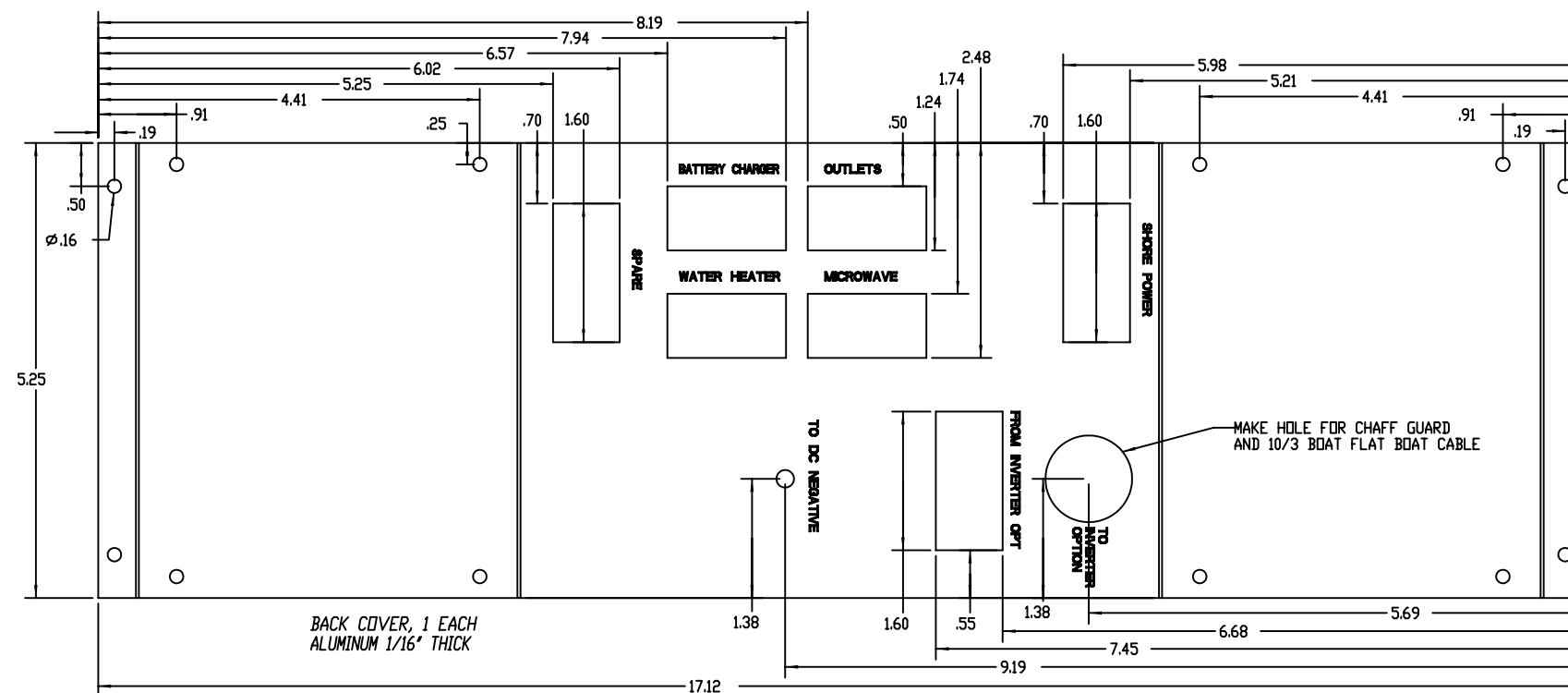
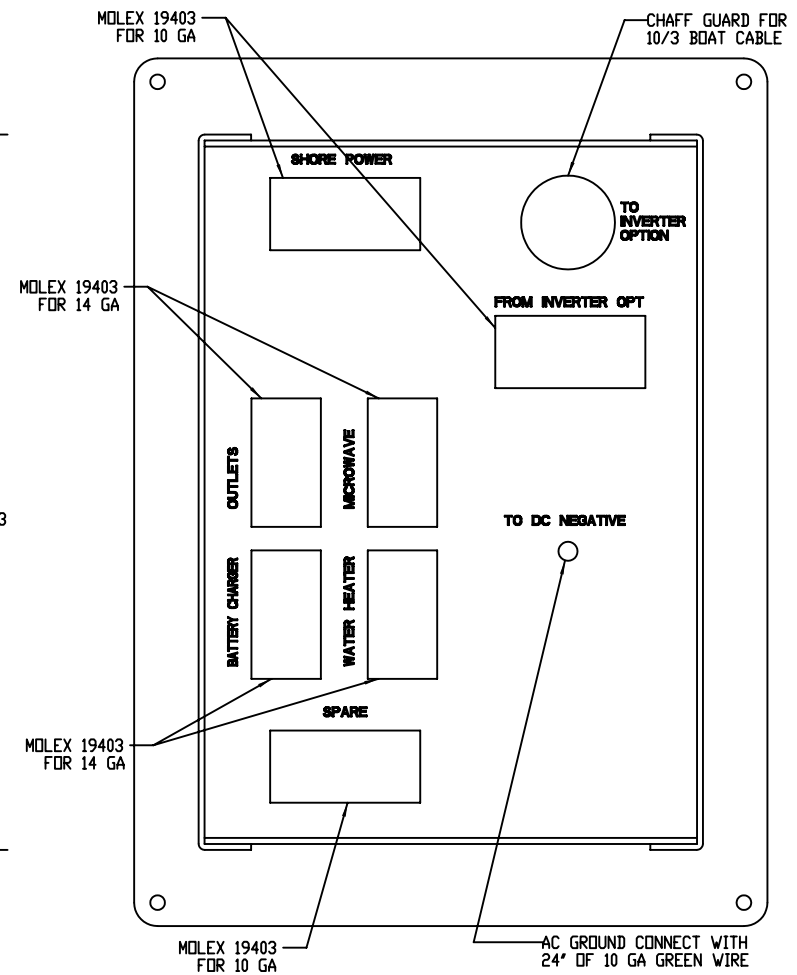
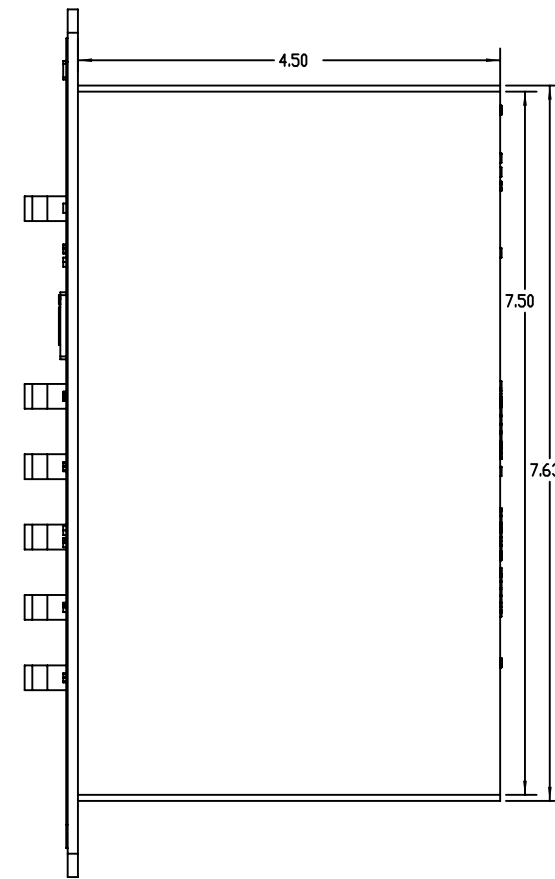
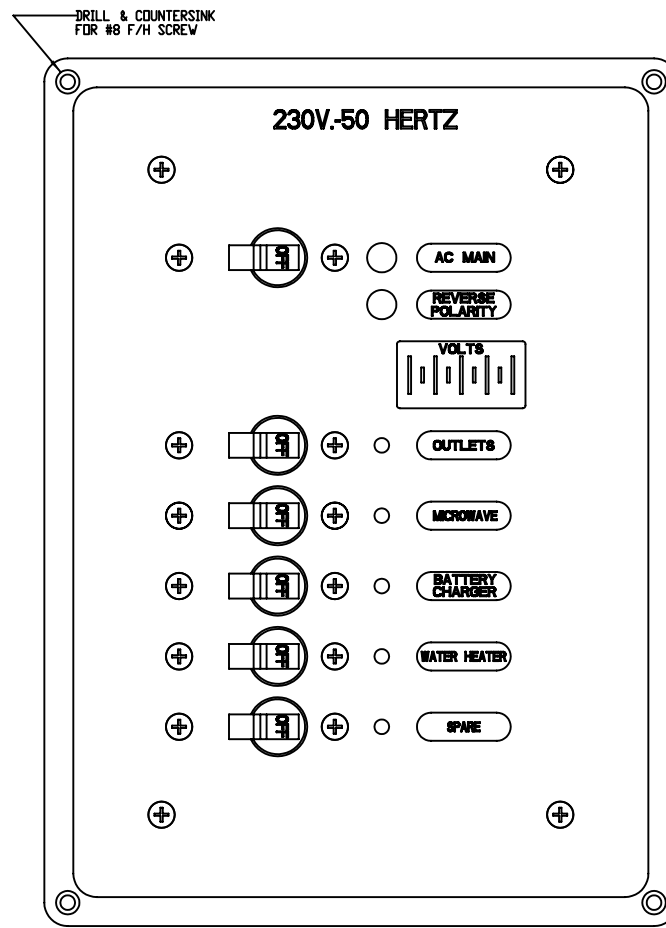
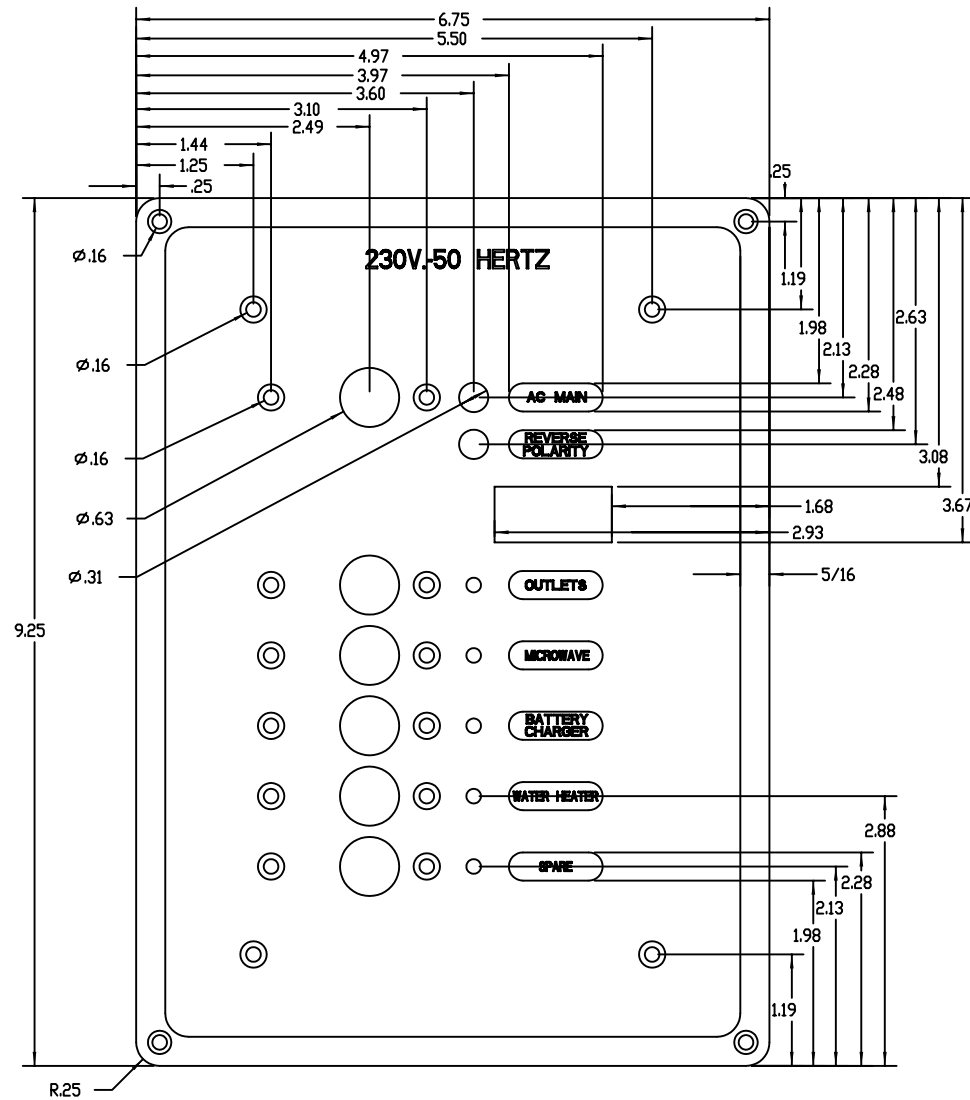
HUNTERA 31

DRAWING TITLE: **PANEL, 120VAC**

DRAWN BY: **JLK** DATE: **07-01-04** SHEET **1** OF **1**

SCALE: **1:00** PART NUMBER: **TBD** REVISION: **-** DRAWN BY: **JLK**

PANEL AC H30 V2



SIDE BACK COVER, 2 EACH ALUMINUM 1/16" THICK

- BREAKER LIST TO BE SUPPLIED WITH PANEL FOR 230V-50 HERTZ VERSION
- AC MAIN .15 AMP
 - OUTLETS .10 AMP
 - MICROWAVE .10 AMP
 - BATTERY CHARGER .10 AMP
 - WATER HEATER .10 AMP
 - SPARE .15 AMP

- NOTE:
1. PANEL MATERIAL - 1/8" ALUMINUM
 2. PANEL COLOR & FINISH - FLAT CARBON BLACK WITH GLOSSY BLACK BORDER
 3. BACK LIGHTING COLOR - BLUE
 4. AC MAIN INDICATOR - GREEN LED
REVERSE POLARITY - RED LED
BREAKER INDICATOR LIGHTS - RED LED
 5. BREAKER HANDLE COLOR - BLACK
 6. SEE ELECTRICAL SCHEMATIC FOR BACKSIDE

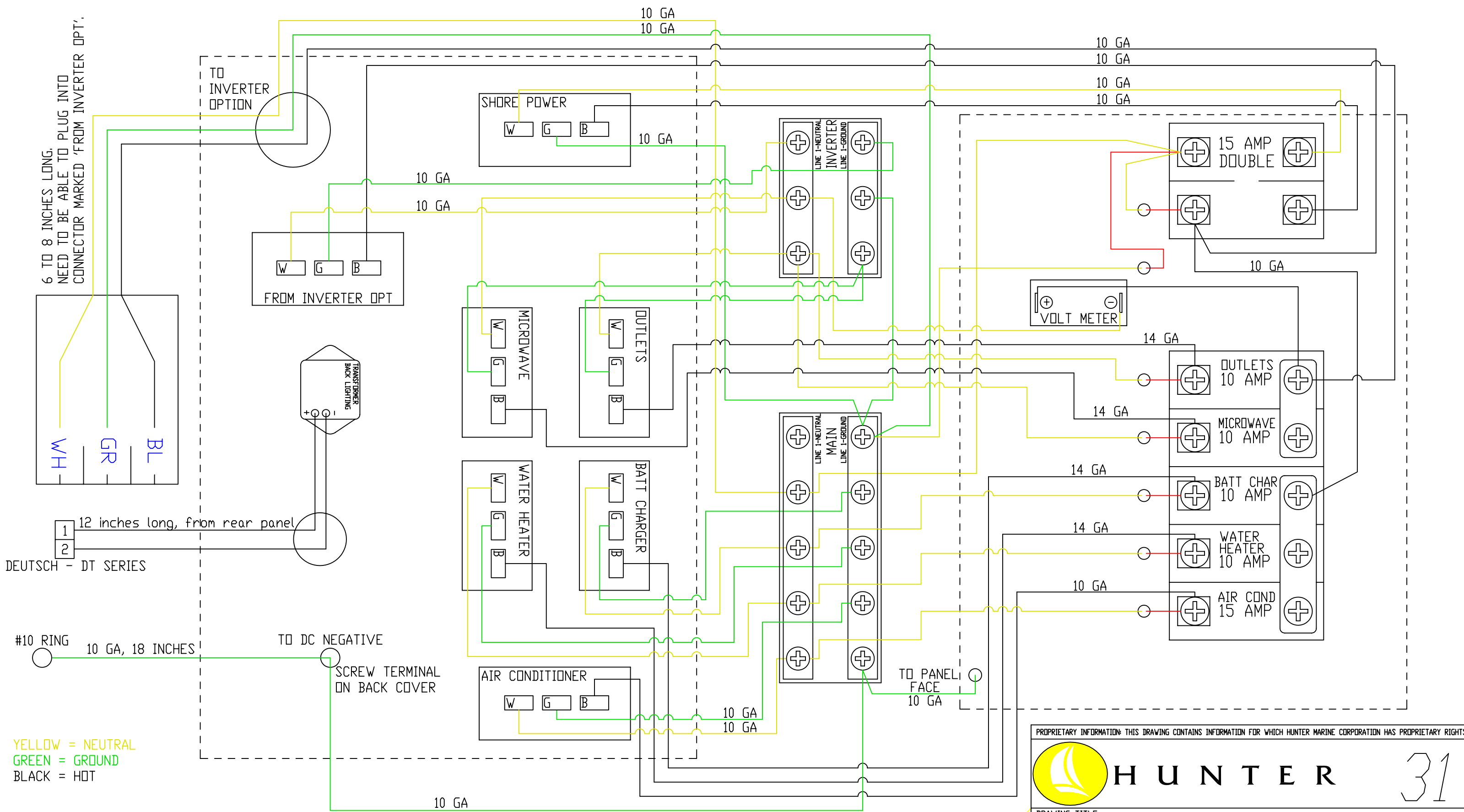
PROPERTY INFORMATION THIS DRAWING CONTAINS INFORMATION FOR WHICH HUNTERA TRADE COPYRIGHT AND PROPRIETARY RIGHTS.

HUNTERA 31

DRAWING TITLE: PANEL, 230VAC

DRAWN BY: JLK DATE: 07-01-07 SHEET 1 OF 1

SCALE: 1/16" HUNTER PART NO: 710 REVISION: DRAWN BY: PANEL AC H31 230VAC

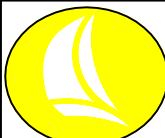


YELLOW = NEUTRAL
 GREEN = GROUND
 BLACK = HOT

NOTE: BREAKER VALUES SHOWN ARE FOR 230V PANEL VERSION.
 NEED PROTECTIVE CAPS FOR BATTERY CHARGER AND AIR CONDITIONER.

BREAKER LIST (230V):
 BATTERY CHARGER - 10 AMPS
 WATER HEATER - 10 AMPS
 OUTLETS - 10 AMPS
 MICROWAVE - 10 AMPS
 AIR CONDITIONER - 15 AMPS

PROPRIETARY INFORMATION: THIS DRAWING CONTAINS INFORMATION FOR WHICH HUNTER MARINE CORPORATION HAS PROPRIETARY RIGHTS.



HUNTER

31

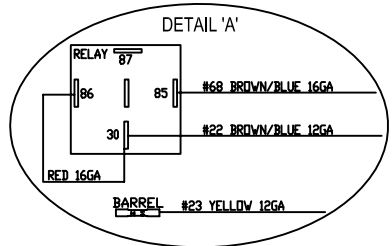
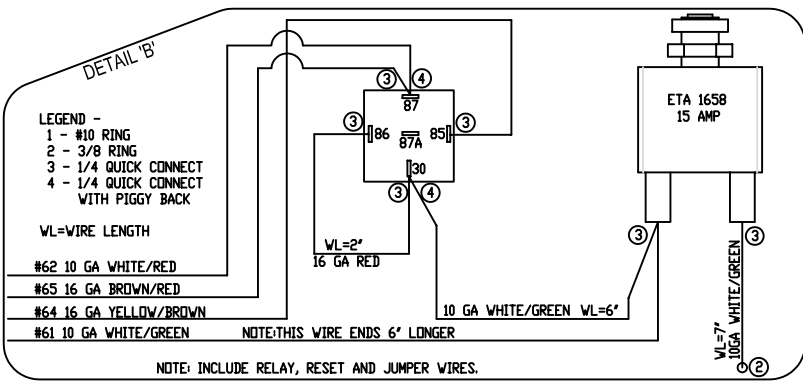
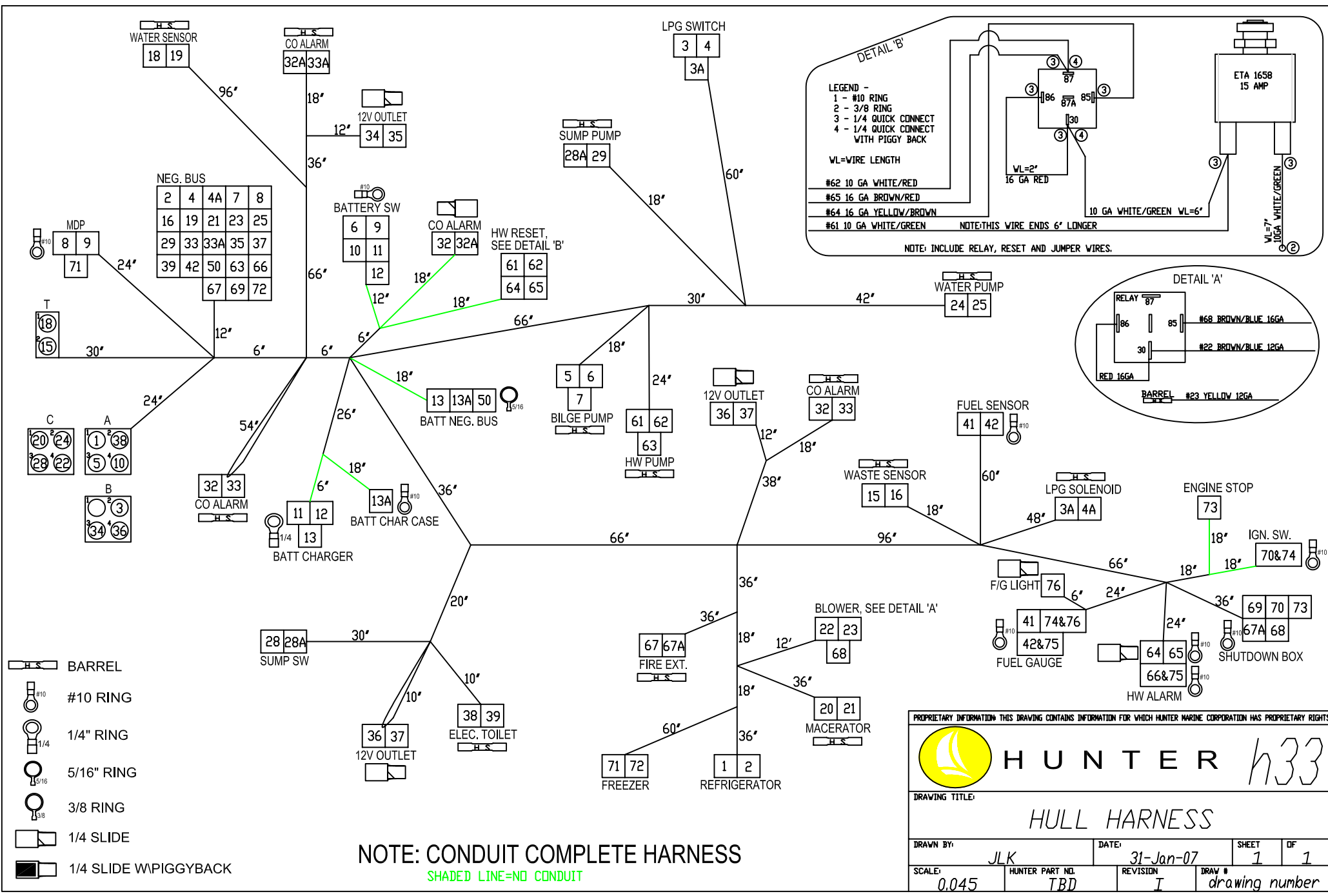
DRAWING TITLE:
 AC PANEL SCHEMATIC, 230V VERSION

DRAWN BY: JLK	DATE: 18-Nov-05	SHEET 1	OF 1
SCALE: 1.000	HUNTER PART NO. TBD	REVISION B	DRAW # PANEL_AC_H31_230V

CONN. T	TANK MONITOR ADAPTER	MATCHES	CONN. TYPE
1	pink, FUEL SENSOR (S)	#41, 16ga pink, FUEL SENSOR (S)	Deutsch - DT Series - 6 pin male connector w/female pins
2	orange/white, FUEL SENSOR (+)	#43, 16ga orange/white, FUEL SENSOR (+)	
3	orange/green, WASTE SENSOR (+)	#14, 16ga orange/green, WASTE SENSOR (+)	
4	pink/gray, WASTE SENSOR (S)	#15, 16ga pink/gray, WASTE SENSOR (S)	
5	orange/blue, WATER SENSOR (+)	#17, 16ga orange/blue, WATER SENSOR (+)	
6	pink/black, WATER SENSOR (s)	#18, 16ga pink/black, WATER SENSOR (s)	
CONN. G			
1	red/blue, TANK MONITOR (+)	#53, 16ga red/orange, TANK MONITOR (+)	DT Series - 2 pin female connector w/male pins
2	yellow or black, TANK MONITOR (-)	#54, 16ga yellow, TANK MONITOR (-)	

CONN. S	STEREO ADAPTER	MATCHES	CONN. TYPE
1	RED, STEREO PWR	#50, 16ga red, STEREO PWR	Deutsch-DT 3 pin female connector w/male pins
2	YELLOW, STEREO MEMORY	#51, 16ga yellow/red, STEREO MEMORY	
3	BLACK, STEREO (-)	#52, 16ga yellow, STEREO (-)	
CONN. SS			
1	WHITE	#9, 16ga white/orange, PORT MAIN SPEAKER (+)	Deutsch - DT Series - 8 pin male connector w/female pins
2	WHITE/BLACK	#10, 16ga white/yellow, PORT MAIN SPEAKER (-)	
3	GREEN	#21, 16ga white/pink, PORT ARCH SPEAKER (+)	
4	GREEN/BLACK	#22, 16ga white/yellow, PORT ARCH SPEAKER (-)	
5	PURPLE	#23, 16ga white/gray, STBD ARCH SPEAKER (+)	
6	PURPLE/BLACK	#24, 16ga white/black, STBD ARCH SPEAKER (-)	
7	GRAY	#30, 16ga white/blue, STBD MAIN SPEAKER (+)	
8	GRAY/BLACK	#31, 16ga white/black, STBD MAIN SPEAKER (-)	

CONN. Arch	ARCH HARNESS	MATCHES	CONN. TYPE
1	16ga blue/white, ARCH LIGHT	#19, 16ga blue/white, ARCH LIGHT	Deutsch - DT Series - 6 pin male connector w/female pins
2	16ga yellow, ARCH LIGHT (-)	#20, 16ga yellow, ARCH LIGHT (-)	
3	16ga white/pink, PORT ARCH SPEAKER (+)	#21, 16ga white/pink, PORT ARCH SPEAKER (+)	
4	16ga white/yellow, PORT ARCH SPEAKER (-)	#22, 16ga white/yellow, PORT ARCH SPEAKER (-)	
5	16ga white/gray, STBD ARCH SPEAKER (+)	#23, 16ga white/gray, STBD ARCH SPEAKER (+)	
6	16ga white/black, STBD ARCH SPEAKER (-)	#24, 16ga white/black, STBD ARCH SPEAKER (-)	



- BARREL
- #10 RING
- 1/4" RING
- 5/16" RING
- 3/8 RING
- 1/4 SLIDE
- 1/4 SLIDE WPIGGYBACK

NOTE: CONDUIT COMPLETE HARNESS
 SHADED LINE-NO CONDUIT

PROPRIETARY INFORMATION THIS DRAWING CONTAINS INFORMATION FOR WHICH HUNTER MARINE CORPORATION HAS PROPRIETARY RIGHTS.

HUNTER *h33*

DRAWING TITLE: **HULL HARNESS**

DRAWN BY: *JLK* DATE: *31-Jan-07* SHEET *1* OF *1*

SCALE: *0.045* HUNTER PART NO. *TBD* REVISION *I* DRAW # *drawing number*

HULL HARNESS CONNECTORS for h33

All connectors to be male pins with female connectors.

REV. H

9/25/2006

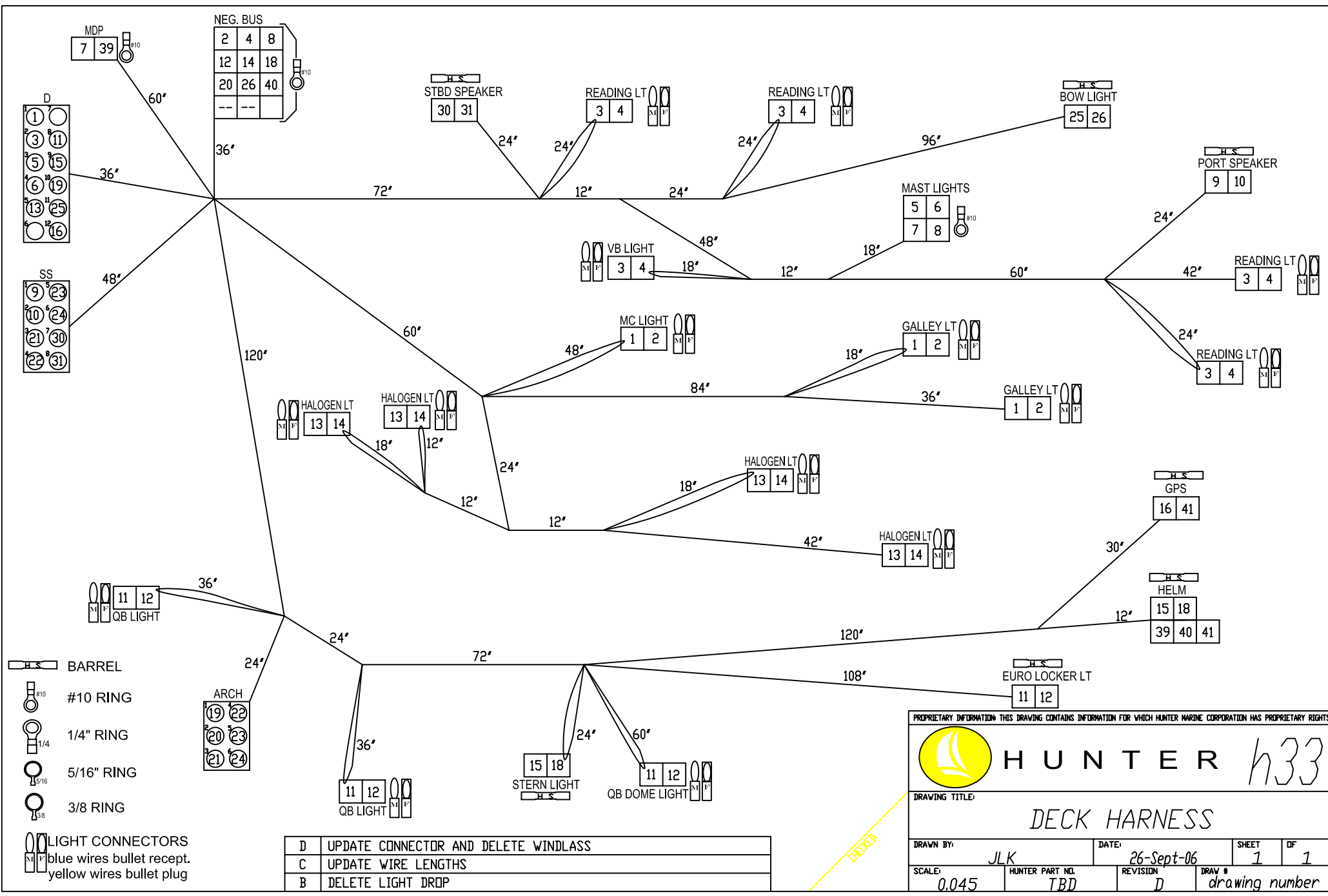
CONN. A	WIRE# (HULL)	NOTES:	CONN. TYPE
1	#1, 10ga Red/Black, REFRIGERATOR		Deutsch - DTP Series - 4 pin
2	#38, 10ga Brown/Pink, HEAD		
3	#5, 12ga Brown/Red, BILGE MANUAL		
4	#10, 12ga Tan, BILGE POWER		

CONN. B	WIRE# (HULL)		CONN. TYPE
1			Deutsch - DT Series - 4 pin
2	#3, 16ga Orange/Red, LPG		
3	#34, 12ga Red, 12V OUTLET		
4	#36, 12ga Red, 12V OUTLET		

CONN. C	WIRE# (HULL)		CONN. TYPE
1	#20, 10ga Brown/White, MACERATOR		Deutsch - DTP Series - 4 pin
2	#24, 12ga Brown, WATER PUMP		
3	#28, 12ga Brown/Black, SUMP PUMP		
4	#22, 12ga Brown/Blue, BLOWER		

CONN. T	WIRE# (HULL)		CONN. TYPE
1	#18, 16ga Pink/Black, WATER SENSOR (S)		Deutsch - DT Series - 2 pin
2	#15, 16ga Pink/Gray, WASTE SENSOR (S)		


HUNTER 33 DC HULL HARNESS			REV.I	1/31/2007
WIRE#	GAUGE	COLOR	LENGTH	FUNCTION
1	10	RED/BLACK	246"	REFRIGERATION
2	10	YELLOW	234"	REFRIGERATION NEG.
3	16	ORANGE/RED	192"	LPG PANEL SW
4	16	YELLOW	180"	LPG INDICATOR NEG.
3A	16	ORANGE/GREEN	402"	LPG SOLENOID (+)
4A	16	YELLOW	270"	LPG SOLENOID (-)
5	12	BROWN/RED	120"	BILGE MANUAL SW
6	12	BROWN/ORANGE	102"	BILGE AUTO
7	12	YELLOW	108"	BILGE NEG.
8	6	YELLOW	36"	DC MDP NEG.
9	6	ORANGE/RED	54"	DC MDP POWER
10	12	TAN	54"	BILGE POWER
11	8	ORANGE/GREEN	50"	BATTERY CHARGER
12	8	ORANGE/RED	50"	BATTERY CHARGER
13	8	YELLOW	50"	BATTERY CHARGER NEG
13A	10	GREEN/YELLOW	62"	BATTERY CHARGER CASE
14	16	ORANGE/GREEN	252"	WASTE SENSOR (+)
15	16	PINK/BLUE	252"	WASTE SENSOR (S)
16	16	YELLOW	234"	WASTE SENSOR (-)
17	16	ORANGE/BLUE	198"	WATER SENSOR (+)
18	16	PINK/BLACK	198"	WATER SENSOR (S)
19	16	YELLOW	180"	WATER SENSOR (-)
20	10	BROWN/WHITE	210"	MACERATOR
21	10	YELLOW	198"	MACERATOR NEG.
22	12	BROWN/BLUE	204"	BLOWER
23	12	YELLOW	192"	BLOWER NEG.
24	12	BROWN	174"	WATER PUMP
25	12	YELLOW	162"	WATER PUMP NEG.
28	12	BROWN/BLACK	122"	SUMP PUMP SW
28A	12	BROWN/BLACK	200"	SUMP PUMP
29	12	YELLOW	138"	SUMP PUMP NEG.
32	16	RED/BLUE	308"	CO DETECTOR
33	16	YELLOW	290"	CO DETECTOR NEG.
32A	16	RED/BLUE	150"	CO DETECTOR
33A	16	YELLOW	138"	CO DETECTOR NEG.
34	12	RED	144"	12V OUTLET
35	12	YELLOW	132"	12V OUTLET NEG.
36	12	RED	248"	12V OUTLET
37	12	YELLOW	236"	12V OUTLET NEG.
38	10	BROWN/PINK	102"	ELECT. TOILET
39	10	YELLOW	90"	ELECT. TOILET NEG.
41	16	PINK	150"	FUEL SENSOR (S)
42	16	YELLOW	150"	FUEL SENSOR (-)
50	6	YELLOW	42"	NEG BUS JUMPER
61	10	WHITE/GREEN	120"	HW PUMP AUTO
62	10	WHITE/RED	114"	HW PUMP MANUAL
63	10	YELLOW	114"	HW PUMP NEG
64	16	YELLOW/BROWN	312"	HW RELAY SW
65	16	BROWN/RED	312"	HW ALARM IND
66	16	YELLOW	312"	HW ALARM NEG
67	16	BLACK/YELLOW	198"	FIRE EXT.
67A	16	BLACK/YELLOW	258"	FIRE EXT. - SHUTDOWN
68	16	BROWN/BLUE	252"	BLOWER RELAY
69	16	YELLOW	312"	FIRE EXT. - SHUTDOWN BOX
70	16	RED	72"	IGNITION SWITCH
71	10	RED/WHITE	270"	FREEZER
72	10	YELLOW	258"	FREEZER NEG
73	16	WHITE/BROWN	72"	ENGINE STOP
74	16	RED	60"	FUEL GAUGE POWER
75	16	YELLOW	48"	FUEL GAUGE NEGATIVE
76	16	RED	6"	FUEL GAUGE LIGHT



- BARREL
- #10 RING
- 1/4" RING
- 5/16" RING
- 3/8" RING
- LIGHT CONNECTORS
- blue wires bullet recept.
- yellow wires bullet plug

D	UPDATE CONNECTOR AND DELETE WINDLASS
C	UPDATE WIRE LENGTHS
B	DELETE LIGHT DROP

PROPRIETARY INFORMATION THIS DRAWING CONTAINS INFORMATION FOR WHICH HUNTER MARINE CORPORATION HAS PROPRIETARY RIGHTS



HUNTER *h33*

DRAWING TITLE: **DECK HARNESS**

DRAWN BY: *JLK* DATE: *26-Sept-06* SHEET *1* OF *1*

SCALE: *0.045* HUNTER PART NO. *TBD* REVISION *D* DRAW # *drawing number*

CHECKED

DECK HARNESS CONNECTORS for h33

All connectors to be male pins with female connectors.

9/26/2006

CONN. F	WIRE# (DECK)	NOTES:	CONN. TYPE
1	#1, 16ga blue, CABIN LIGHTS		Deutsch - DT Series - 12 pin
2	#3, 16ga blue, CABIN LIGHTS		
3	#5, 14ga gray/red, ANCHOR LIGHT		
4	#6, 14ga gray/green, STEAMING LIGHT		
5	#13, 16ga blue, CABIN LIGHTS		
6			
7			
8	#11, 16ga blue, STBD LIGHTS		
9	#15, 16ga gray/yellow, STERN LIGHT		
10	#19, 16ga blue/white, ARCH LIGHT		
11	#25, 16ga gray/white, BOW LIGHT		
12	#16, 16ga red/black, GPS		

CONN. SS	WIRE# (TO STEREO)		CONN. TYPE
1	#9, 16ga white/orange, PORT MAIN SPEAKER (+)		Deutsch - DT Series - 8 pin
2	#10, 16ga white/yellow, PORT MAIN SPEAKER (-)		
3	#21, 16ga white/pink, PORT ARCH SPEAKER (+)		
4	#22, 16ga white/yellow, PORT ARCH SPEAKER (-)		
5	#23, 16ga white/gray, STBD ARCH SPEAKER (+)		
6	#24, 16ga white/black, STBD ARCH SPEAKER (-)		
7	#30, 16ga white/blue, STBD MAIN SPEAKER (+)		
8	#31, 16ga white/black, STBD MAIN SPEAKER (-)		

CONN. Arch	WIRE# (TO ARCH)		CONN. TYPE
1	#19, 16ga blue/white, ARCH LIGHT		Deutsch - DT Series - 6 pin
2	#20, 16ga yellow, ARCH LIGHT (-)		
3	#21, 16ga white/pink, PORT ARCH SPEAKER (+)		
4	#22, 16ga white/yellow, PORT ARCH SPEAKER (-)		
5	#23, 16ga white/gray, STBD ARCH SPEAKER (+)		
6	#24, 16ga white/black, STBD ARCH SPEAKER (-)		

No Connector	WIRE# (to spare on panel)		
	#39, 10ga red, AUTOPILOT		
	#7, 16ga gray, DECK LIGHT		

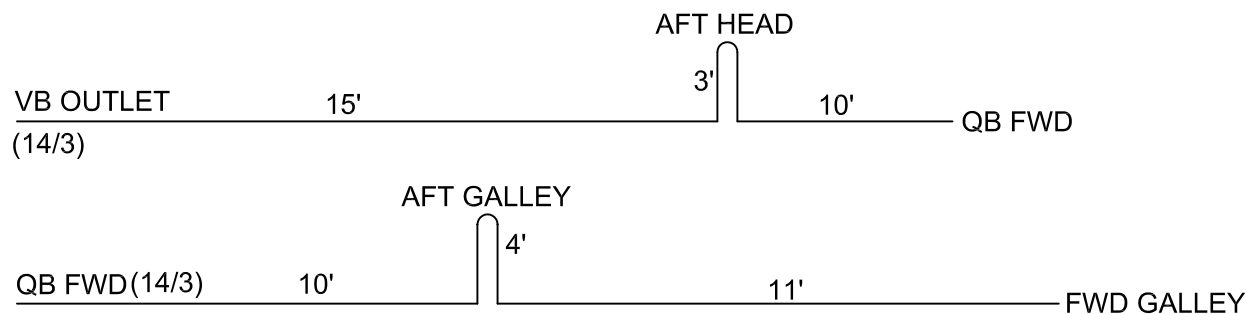
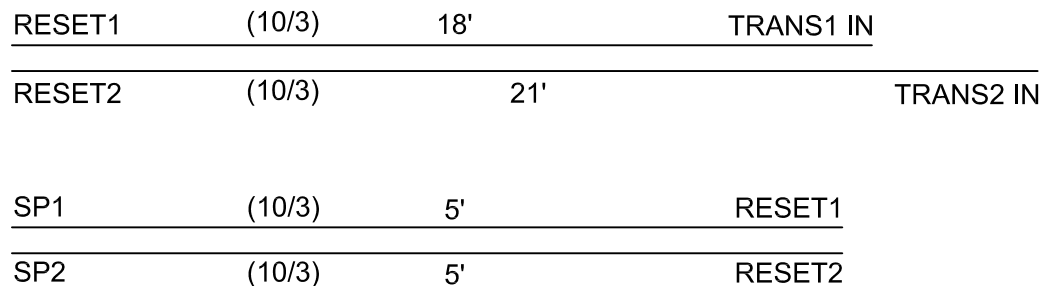
HUNTER 33 DECK HARNESS			REV.-D	9/26/2006
WIRE#	GAUGE	COLOR	LENGTH	FUNCTION
1	16	BLUE	348"	CABIN LIGHTS
2	16	YELLOW	348"	CABIN LIGHTS NEG.
3	16	BLUE	510"	CABIN LIGHTS
4	16	YELLOW	510"	CABIN LIGHTS NEG.
5	14	GRAY/RED	198"	ANCHOR LIGHT
6	14	GRAY/GREEN	198"	STEAMING LIGHT
7	16	GRAY	222"	DECK LIGHT
8	10	YELLOW	198"	MAST LIGHTS NEG.
9	16	WHITE/ORANGE	276"	PORT MAIN SPEAKER
10	16	WHITE/YELLOW	276"	PORT MAIN SPEAKER NEG.
11	16	BLUE	654"	CABIN LIGHTS
12	16	YELLOW	654"	CABIN LIGHTS NEG.
13	16	BLUE	294"	CABIN LIGHTS
14	16	YELLOW	294"	CABIN LIGHTS NEG.
15	16	GRAY/YELLOW	432"	STERN LIGHT
16	16	RED/BLACK	402"	GPS
18	16	YELLOW	432"	STERN LIGHT NEG.
19	16	BLUE/WHITE	180"	ARCH LIGHT
20	16	YELLOW	180"	ARCH LIGHT NEG.
21	16	WHITE/PINK	192"	PORT ARCH SPEAKER
22	16	WHITE/YELLOW	192"	PORT ARCH SPEAKER NEG.
23	16	WHITE/GRAY	192"	STBD ARCH SPEAKER
24	16	WHITE/BLACK	192"	STBD ARCH SPEAKER NEG.
25	16	GRAY/WHITE	240"	BOW LIGHT
26	16	YELLOW	240"	BOW LIGHT NEG.
27	16	TAN	0	WINDLASS
30	16	WHITE/BLUE	144"	STBD MAIN SPEAKER
31	16	WHITE/BLACK	144"	STBD MAIN SPEAKER NEG.
39	10	RED	408"	AUTO PILOT
40	10	YELLOW	408"	AUTO PILOT NEG.
41	16	YELLOW	42"	GPS NEG

33 AC WIRES

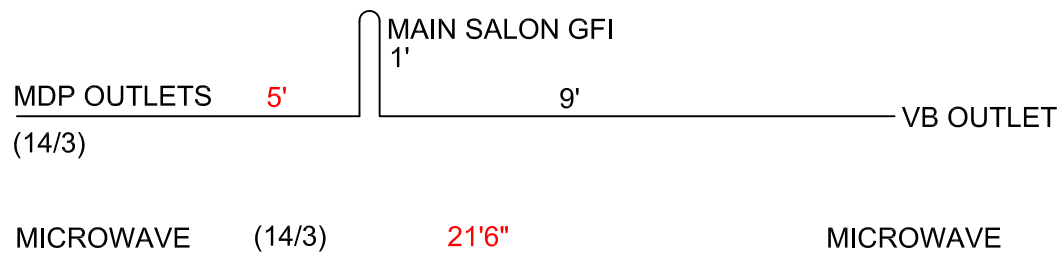
REV. 4-10-07

P/N 1002836

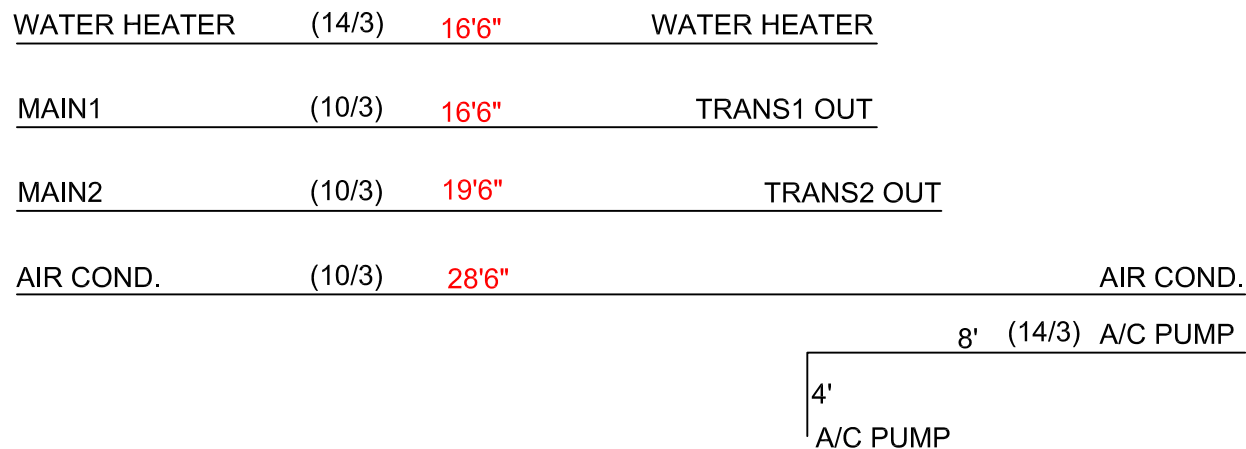
MODULE STAGE 24A



USE MOLEX SC FOR WIRE
CIRCUITS LISTED BELOW



TAPE THE FOLLOWING TOGETHER TO 14'

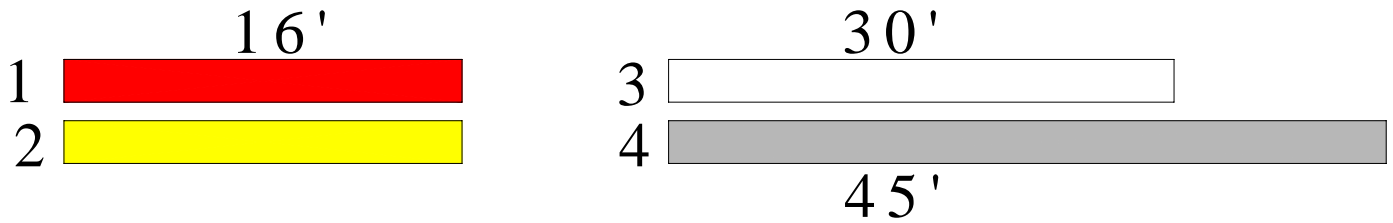


STAGE 24A-MODULE P/N 1002835						
	WIRE SIZE	COLOR	LENGTH	EYE	EYE	DESCRIPTION
HOUSE BATTERY #1	2/O	RED	5'	3/8"	3/8"	BATT TO SW-HOUSE1
	2/O	YELLOW	4'	5/16"	3/8"	BATT TO GND-HOUSE1
YANMAR STARTER	2 GA	RED	15' 6"	5/16"	3/8"	START TO STUD-YAN
	2 GA	YELLOW	13' 6"	3/8"	3/8"	ENGINE TO GND-YAN
GNDS	4 GA	GREEN/YELLOW	23'	1/4"	3/8"	ARCH GND
	4 GA	GREEN/YELLOW	10'	1/4"	3/4"	CHAINPLATE PORT
	4 GA	GREEN/YELLOW	10'	1/4"	3/4"	CHAINPLATE STBD
	10 GA	GREEN/YELLOW	25'			FUEL FILL GRD
	4 GA	GREEN/YELLOW	4' 2"	1/4"	3/8"	MAST POST TO KEEL
STAGE 56-ELECTRICAL P/N 1002838						
	WIRE SIZE	COLOR	LENGTH	EYE	EYE	DESCRIPTION
FIRE EXTIGUISHER	16 GA	WHITE/BROWN	4'			SHUTDOWN BYPASS
	16 GA	RED	4'			SHUTDOWN PWR
	16 GA	YELLOW	4'			SHUTDOWN NEGATIVE
BUSS BLOCKS	6 GA	YELLOW	8 INCHES	1/4"	1/4"	JUMPER GROUND
STAGE 34-DECK RIGGING P/N 1002837						
VHF RADIO	RG213	VHF COAX	18'			VHF COAX
GNDS	6 GA	GREEN/YELLOW	9'	3/8"	1/2"	PEDESTAL GND
OPTIONS						
MODULE STAGE 24 A						
	WIRE SIZE	COLOR	LENGTH	EYE	EYE	DESCRIPTION
HOUSE BATTERY #2	2/O	RED	6' 6"	3/8"	3/8"	BATT TO SW-HOUSE2
P/N 1002839	2/O	YELLOW	5' 6"	5/16"	3/8"	BATT TO GND-HOUSE2
BATT. CHAR. P/N 1002840	14-3	ROMEX	7'			BATT CHARGER
INVERTER (120V) P/N 1002841	2/O	RED	1' 6"	3/8"	3/8"	INV TO FUSE
	2/O	RED	2'	3/8"	3/8"	FUSE TO SW
	2/O	YELLOW	14 INCHES	5/16"	3/8"	INV TO GND
	1/O	GREEN/YELLOW	14 INCHES	5/16"	1/4"	INV CASE TO GND
	10-3	ROMEX	8'			INV IN
	10-3	ROMEX	8'			INV OUT
INVERTER (230V) P/N 1002842	2/O	RED	2'	3/8"	3/8"	FUSE TO SW
	1/O	GREEN/YELLOW	14 INCHES	5/16"	1/4"	INV CASE TO GND
	10-3	ROMEX	8'			INV IN
	10-3	ROMEX	8'			INV OUT
WINDLASS P/N 1002843	2 GA	RED	20'	1/4"	5/16"	BREAKER TO BOX-WL
	2 GA	YELLOW	22'	3/8"	5/16"	GND TO BOX-WL
	2 GA	RED	1' 6"	5/16"	5/16"	BOX TO MOTOR-WL
	2 GA	RED	1' 6"	5/16"	5/16"	BOX TO MOTOR-WL
	2 GA	RED	16"	3/8"	1/4"	WINDLASS JUMPER
	16 GA	YELLOW	1' 6"	5/16"	F-spade	CONTROL BOX NEG.
HALYARD P/N 1002844	2 GA	RED	19'	1/4"	5/16"	BREAKER TO BOX-HAL
	2 GA	YELLOW	18' 6"	3/8"	5/16"	GND TO BOX-HAL
	2 GA	RED	2'	1/4"	5/16"	BOX TO MOTOR-HAL
	2 GA	RED	2'	1/4"	5/16"	BOX TO MOTOR-HAL
	16 GA	BLUE	3'			HALYARD JUMPER
BILGE KEEL P/N NA	12 GA	BROWN	12'			BILGE PUMP (+)
	12 GA	YELLOW	12'			BILGE PUMP (-)

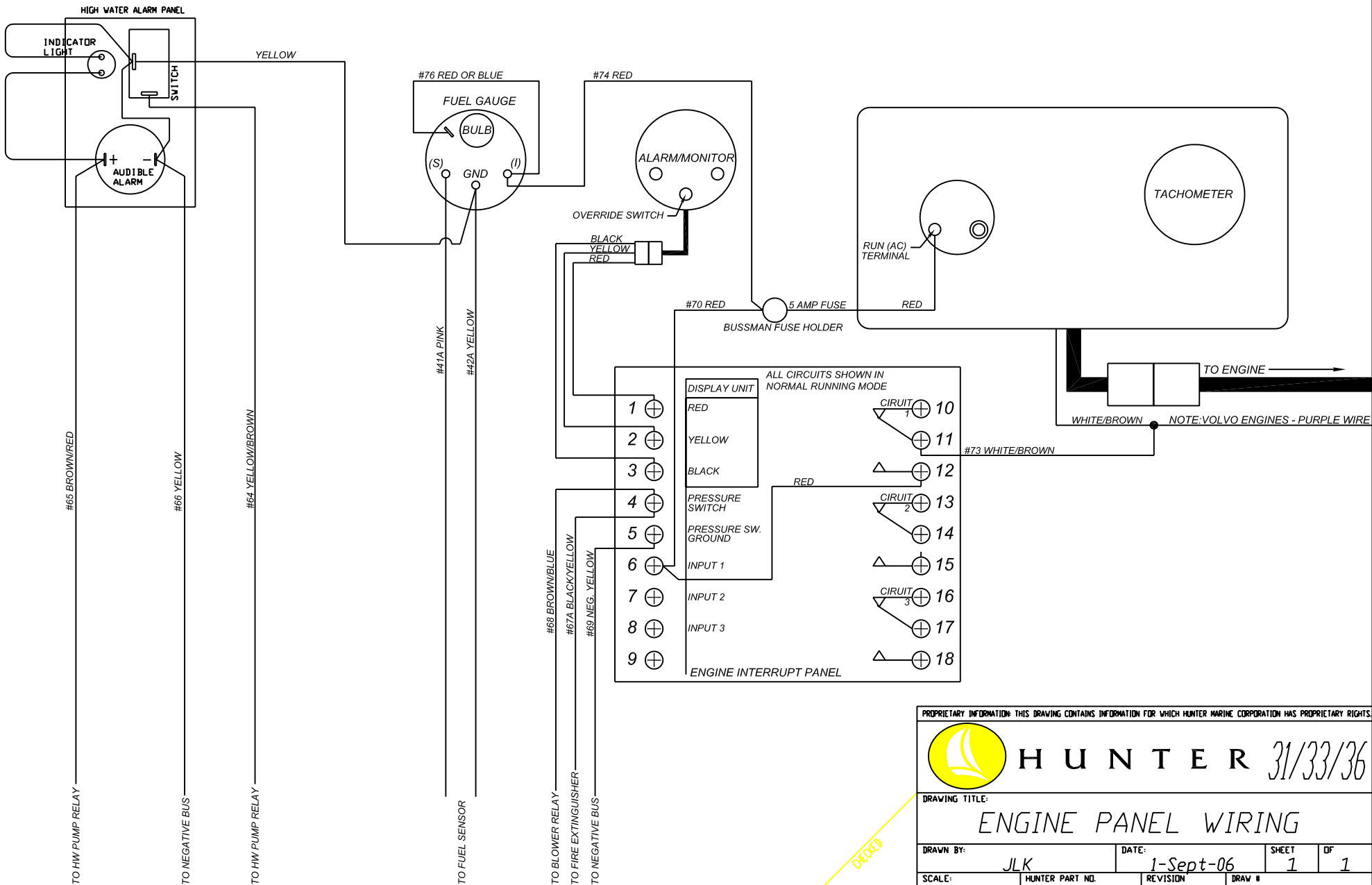
H33 02/11/2004

P/N 1006076

TV / DVD



#	EYE	SIZE	EYE	COLOR	LENGTH	DESCRIPTION
1		10 GA		RED	16'	TV/DVD PWR
2		10 GA		YELLOW	16'	TV/DVD NEG.
3		RG59		COAX	30'	TV CABLE
4		22 GA		4 COND.	45'	PHONE CABLE



PROPRIETARY INFORMATION: THIS DRAWING CONTAINS INFORMATION FOR WHICH HUNTER MARINE CORPORATION HAS PROPRIETARY RIGHTS.



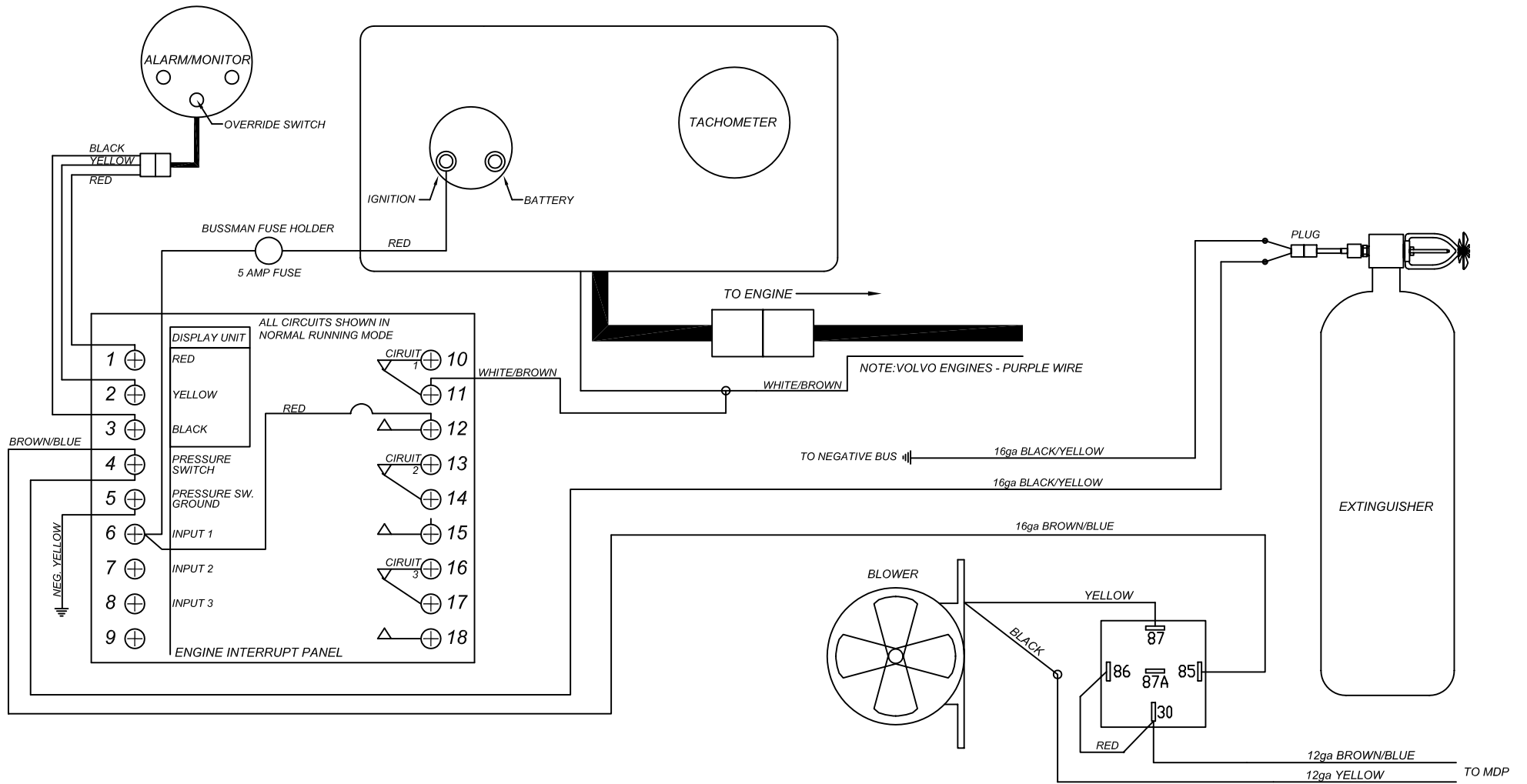
HUNTER 31/33/36

DRAWING TITLE:

ENGINE PANEL WIRING

DRAWN BY: JLK	DATE: 1-Sept-06	SHEET 1	OF 1
SCALE: 0.045	HUNTER PART NO. TBD	REVISION B	DRAW #

CHECKED



PROPRIETARY INFORMATION THIS DRAWING CONTAINS INFORMATION FOR WHICH HUNTER MARINE CORPORATION HAS PROPRIETARY RIGHTS.

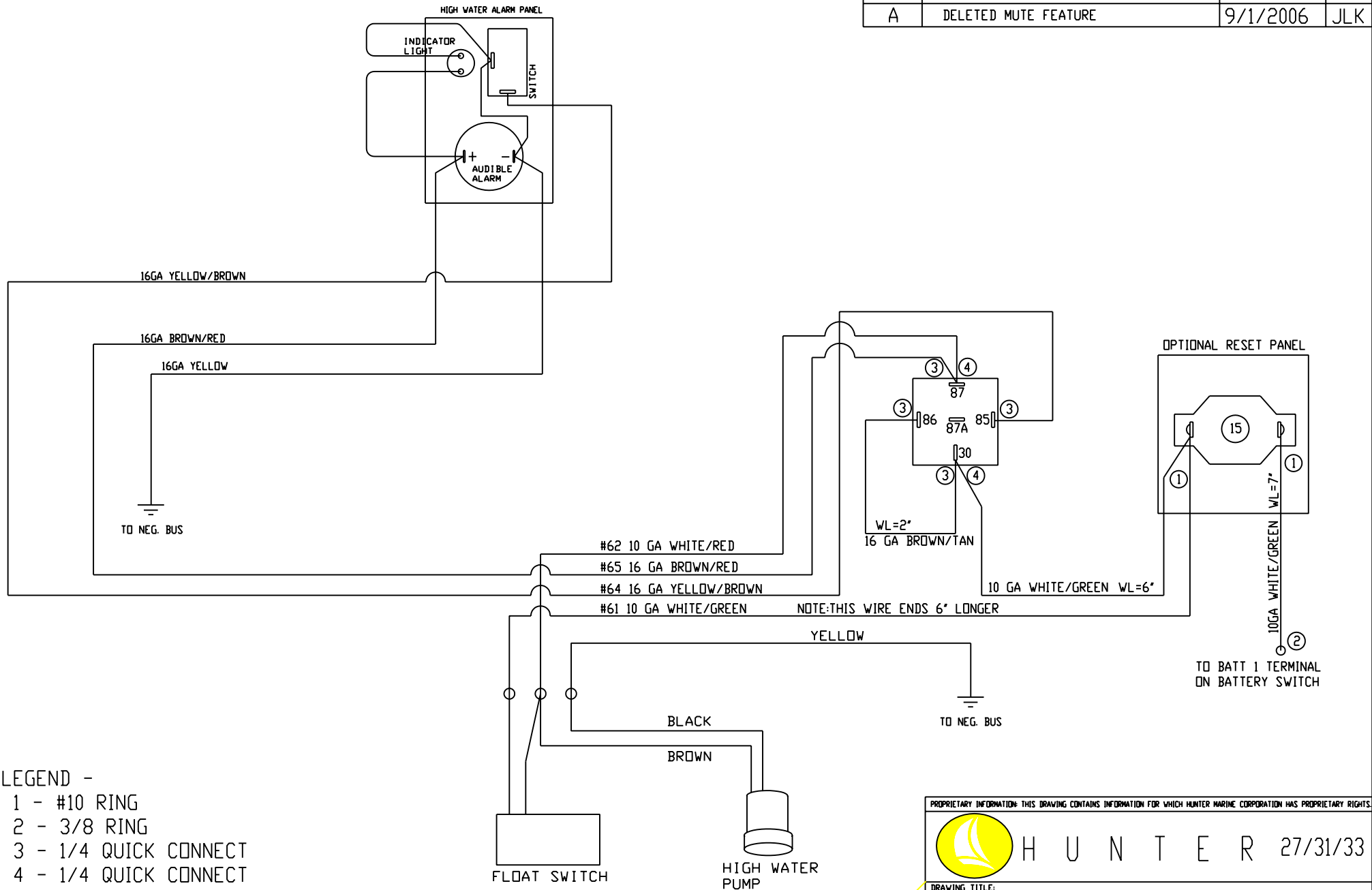


HUNTER 27/30/33

DRAWING TITLE: AUTOMATIC FIRE EXTINGUISHER SCHEMATIC			
DRAWN BY: JLK	DATE: 4-Feb-05	SHEET 1	OF 1
SCALE: 0.045	HUNTER PART NO. TBD	REVISION A	DRAW # -----

CHECKED

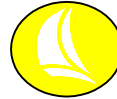
SYMBOL	REVISIONS	DATE	ENG
A	DELETED MUTE FEATURE	9/1/2006	JLK



- LEGEND -
- 1 - #10 RING
 - 2 - 3/8 RING
 - 3 - 1/4 QUICK CONNECT
 - 4 - 1/4 QUICK CONNECT WITH PIGGY BACK

WL=WIRE LENGTH

PROPRIETARY INFORMATION: THIS DRAWING CONTAINS INFORMATION FOR WHICH HUNTER MARINE CORPORATION HAS PROPRIETARY RIGHTS



H U N T E R 27/31/33

DRAWING TITLE:
HIGH WATER BILGE PUMP SCHEMATIC

DRAWN BY: JLK	DATE: 6/28/2006	SHEET	OF
SCALE:	HUNTER PART NO.	REVISION	DRAW #

CHECKED

