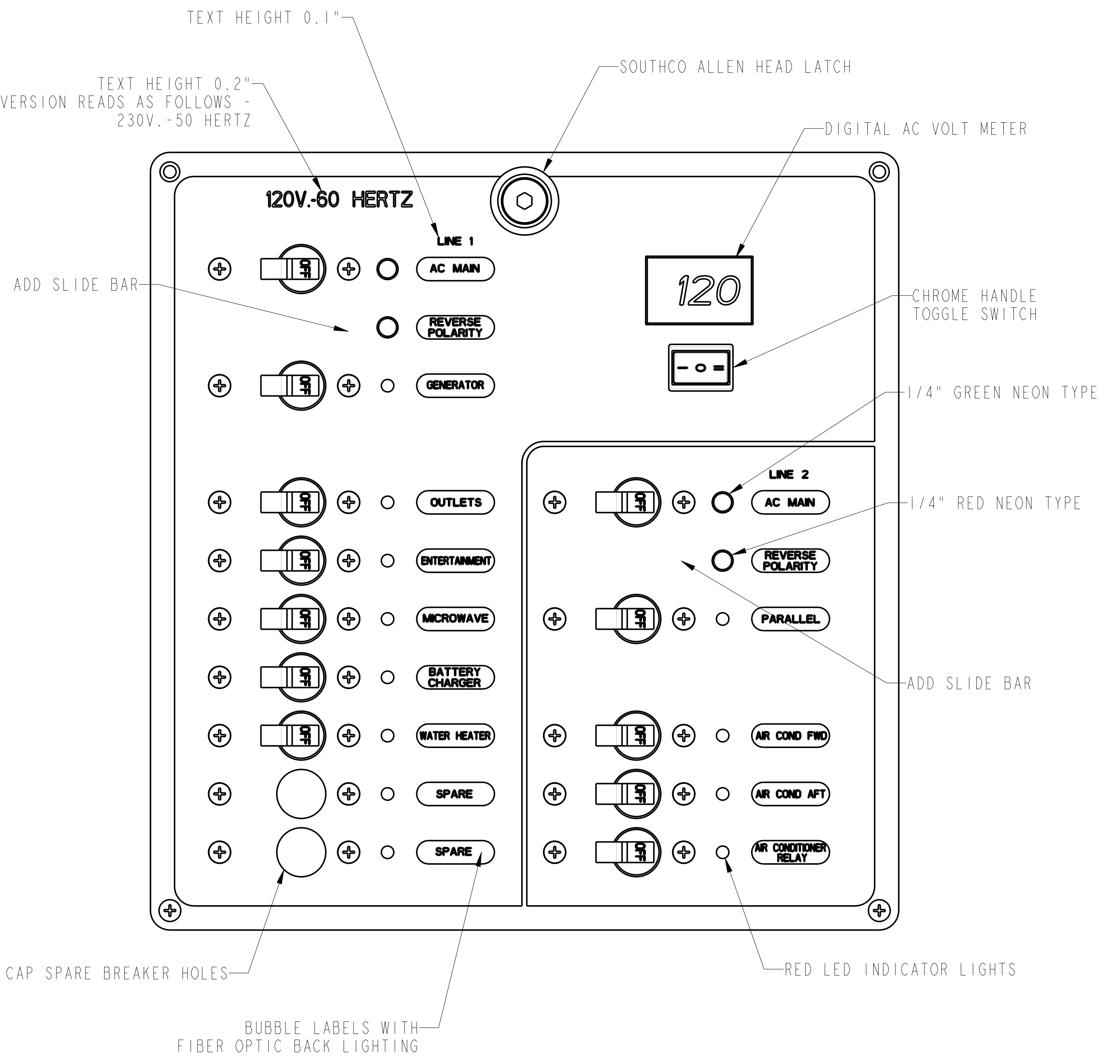


BREAKER LIST FOR 120V VERSION -

- AC MAIN	- 30 AMP DOUBLE WITH COIL TERMINAL
- GENERATOR	- 50 AMP DOUBLE
- OUTLETS	- 20 AMPS
- ENTERTAINMENT	- 15 AMPS
- MICROWAVE	- 15 AMPS
- BATTERY CHARGER	- 15 AMPS
- WATER HEATER	- 15 AMPS
- SPARE	- NONE
- PARALLEL	- 30 AMP DOUBLE
- AIR COND. FWD	- 25 AMPS
- AIR COND. AFT	- 20 AMPS
- AIR COND. RELAY	- 5 AMPS



BREAKER LIST FOR 230V VERSION -

- AC MAIN	- 15 AMP DOUBLE WITH COIL TERMINAL
- GENERATOR	- 30 AMP DOUBLE
- OUTLETS	- 10 AMPS
- ENTERTAINMENT	- 10 AMPS
- MICROWAVE	- 10 AMPS
- BATTERY CHARGER	- 10 AMPS
- WATER HEATER	- 10 AMPS
- SPARE	- NONE
- PARALLEL	- 15 AMP DOUBLE
- AIR COND. FWD	- 15 AMPS
- AIR COND. AFT	- 10 AMPS
- AIR COND. RELAY	- 5 AMPS

- NOTE:
- PANEL MATERIAL - 1/8" ALUMINUM
  - PANEL COLOR&FINISH - SAME AS 50CC
  - BACK LIGHTING COLOR - BLUE
  - AC MAIN INDICATOR - GREEN NEON  
REVERSE POLARITY - RED NEON  
BREAKER INDICATOR LIGHTS - RED LED
  - BREAKER HANDLE COLOR - BLACK
  - ADD SLIDE BAR SYSTEM TO MAINS
  - SEE ELECTRICAL SCHEMATIC FOR BACKSIDE

PROPRIETARY INFORMATION: THIS DRAWING CONTAINS INFORMATION FOR WHICH HUNTER MARINE CORPORATION HAS PROPRIETARY RIGHTS

# HUNTER 39

DRAWING TITLE: **AC PANEL - V2**

DRAWN BY: JLK DATE: 16 June 09 SHEET 1 OF 1

SCALE: 1:1000 HUNTER PART NO. TBD REVISION: PANEL AC-GEN H39-V2