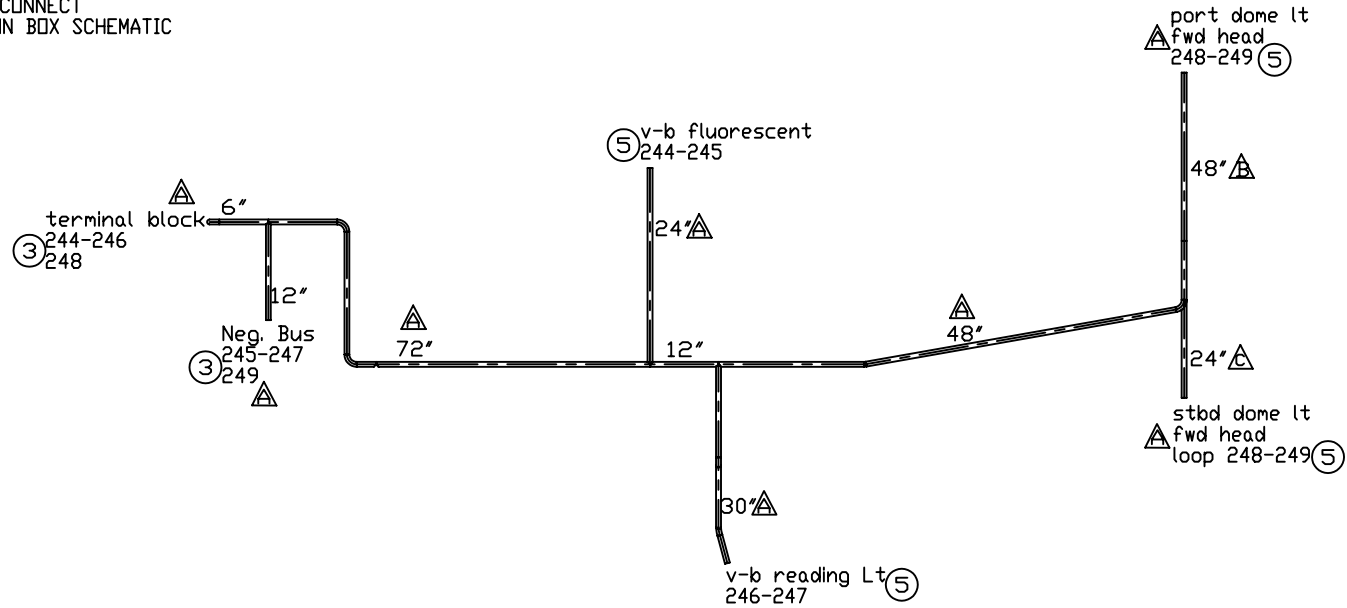


HARNESS LOCATION - V-B AND FWD

SYMBOL	REVISIONS	DATE	ENG
A	UPDATE WIRE DROPS.	7/03/2003	JLK
B	ADD 12 INCHES TO WIRE #248 AND 249	8/11/2003	JLK
C	ADD 6 INCHES TO STBD DOME LT DROP, FWD HEAD	9/04/2003	JLK

LEGEND -

- 1 - SEE CONNECTOR LIST
- 2 - BARREL (BUTT SPLICE)
- 3 - #10 RING TERMINAL
- 4 - 1/4" RING TERMINAL
- 5 - BULLET PLUG
- 6 - 1/4" QUICK CONNECT
- 7 - SEE JUNCTION BOX SCHEMATIC



PROPRIETARY INFORMATION THIS DRAWING CONTAINS INFORMATION FOR WHICH HUNTER MARINE CORPORATION HAS PROPRIETARY RIGHTS



HUNTER 41

DRAWING TITLE: DECK HARNESS				
DRAWN BY: JLK	DATE: 02-Mar-03	SHEET 3	OF 5	
SCALE: 0.045	HUNTER PART NO. TBD	REVISION -	DRAW # 396 DECK HARN	

CHECKED