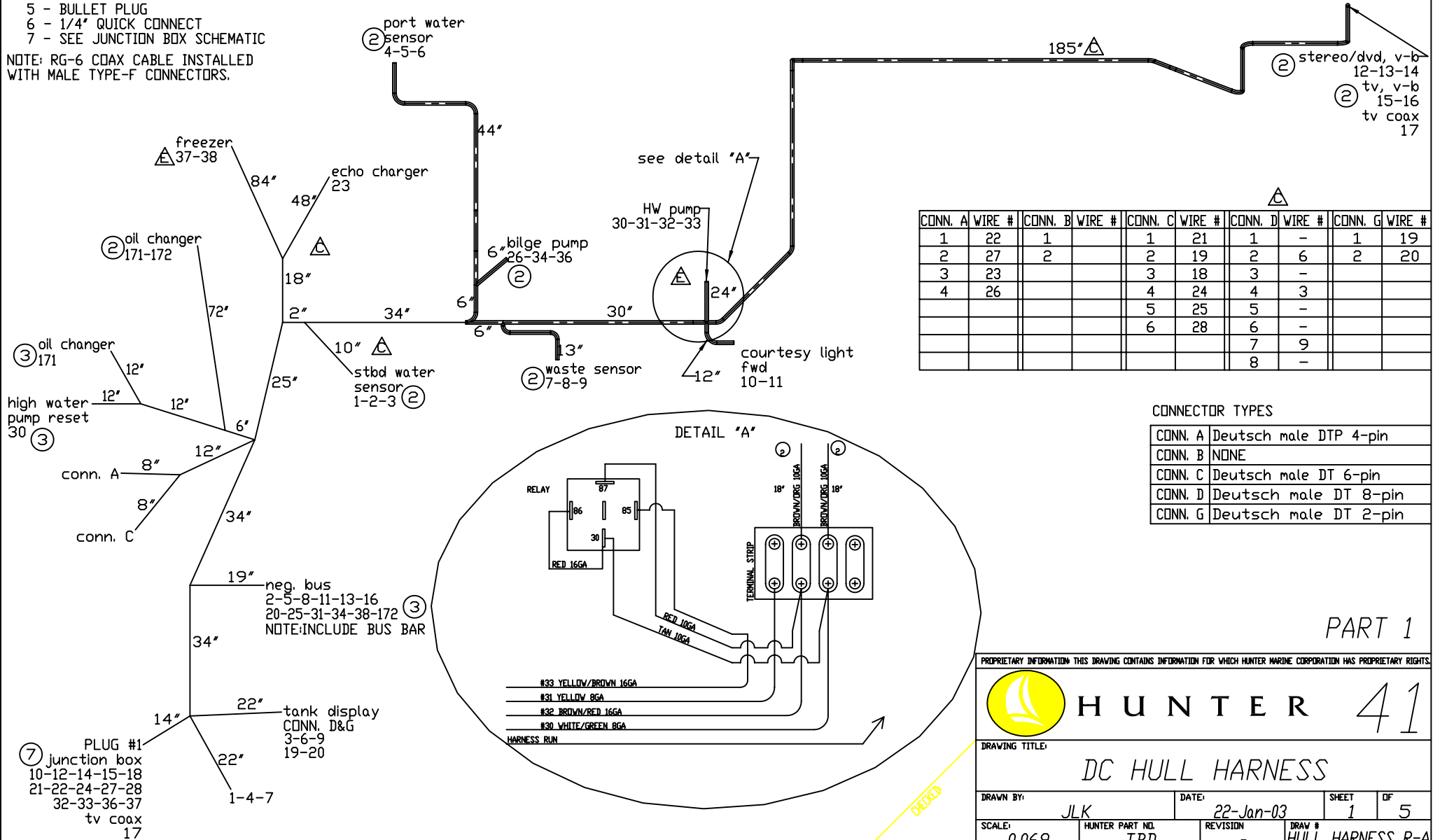


HARNESS LOCATION - CENTERLINE

- LEGEND -  
 1 - SEE CONNECTOR LIST  
 2 - BARREL (BUTT SPLICE)  
 3 - #10 RING TERMINAL  
 4 - 1/4" RING TERMINAL  
 5 - BULLET PLUG  
 6 - 1/4" QUICK CONNECT  
 7 - SEE JUNCTION BOX SCHEMATIC

NOTE: RG-6 COAX CABLE INSTALLED WITH MALE TYPE-F CONNECTORS.

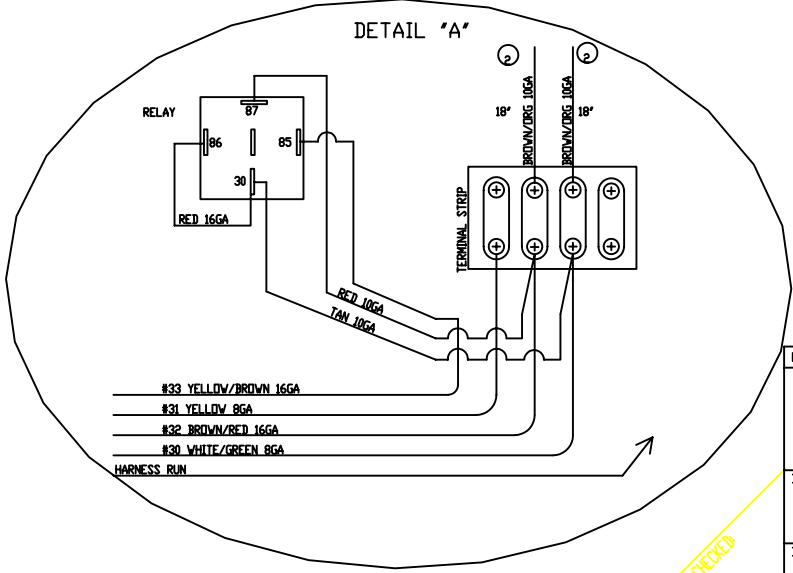
SYMBOL	REVISIONS	DATE	ENG
H	ADDED OIL CHANGER.	6/30/2005	JLK



CONN. A	WIRE #	CONN. B	WIRE #	CONN. C	WIRE #	CONN. D	WIRE #	CONN. G	WIRE #
1	22	1		1	21	1	-	1	19
2	27	2		2	19	2	6	2	20
3	23			3	18	3	-		
4	26			4	24	4	3		
				5	25	5	-		
				6	28	6	-		
						7	9		
						8	-		


CONNECTOR TYPES

CONN. A	Deutsch male DTP 4-pin
CONN. B	NONE
CONN. C	Deutsch male DT 6-pin
CONN. D	Deutsch male DT 8-pin
CONN. G	Deutsch male DT 2-pin



PART 1

PROPRIETARY INFORMATION THIS DRAWING CONTAINS INFORMATION FOR WHICH HUNTER MARINE CORPORATION HAS PROPRIETARY RIGHTS.



**HUNTER 41**

DRAWING TITLE: **DC HULL HARNESS**

DRAWN BY: **JLK** DATE: **22-Jan-03** SHEET **1** OF **5**

SCALE: **0.069** HUNTER PART NO. **TBD** REVISION **-** DRAW # **HULL\_HARNESS\_R-A**

CHECKED