

HUNTER 26

Hunter Marine launches the largest sailboat of its trailerable, water ballasted series. With exciting innovation and superior engineering, the new Hunter 26 follows the successful Hunter 23.5 and Hunter 19 in this series. Performance on all points of sail are enhanced by the high aspect ratio centerboard and rudder. With its optional trailer and water ballast design, the Hunter 26 is simple to rig and easy to tow.

Staying aboard? You'll be surprised with the Hunter 26's voluminous interior and more than ample berths. A full galley, private head and large dinette compliment this Hunter 26's liveability, perfect for that weekend getaway or extended vacation.

The Hunter 26 comes equipped; sails to safety gear, no one gives you more than Hunter. Hunter's standard Cruise Pac is one of the most complete packages of marine gear available. And Hunter backs its boats with a five year limited hull and bottom blister warranty.

See your nearest Hunter dealer today and see what value is really about.

We go the Distance



CRUISE PAC®

While everyone else was complaining about the high cost of marine hardware and accessories, Hunter was doing something about it. The Hunter Cruise Pac® was developed to make all the accessories and hardware you need standard equipment. We buy top-quality gear in very large quantities. The result? Equally large savings. The Hunter 26' Cruise Pac® isn't just sails, winch, and running rigging — it's things like galley, anchor, fire extinguisher, running lights, life jackets — even a copy of *Chapman's Piloting, Seamanship, and Small Boat Handling*. We invite you to compare the Standard Equipment list below with that of any other manufacturer. You'll discover that Hunter is going the distance for you with more — and better gear. For less.

STANDARD EQUIPMENT

Water ballast
3 opening ports
Acrylic windshield w/opening hatch
6 acrylic cabin windows

COCKPIT

Tiller Steering
Tiller Extension
Recessed Fuel Tank Locker
Foot Brace and Cockpit Table Support
Coaming Storage Compartments
Walk Thru Transom
Contoured Seats
Back Rest Cushions

ELECTRICAL

12V System w/Electrical Panel and Fuses
Battery Box
Running Lights
Cabin Lights
Masthead Anchor Lights
Steaming Light

HEAD

Enclosed Head Compartment w/Vanity and Sink
Manual Water System w/5 Gallon Capacity
Porta Potti
Hanging Locker

CABIN

Double Berth Aft
Convertible Double V-Berth w/Curtain
Convertible Dinette Table
Teak and Holly Sole
Tinted Slider Hatch

GALLEY

Counter w/Sink
Removable Cooler
Dish Storage w/Dishes
Manual Water System
2 Burner Stove

OPTIONS

8 HP Outboard Motor w/Controls
Custom Hunter Galvanized Trailer w/Brakes
Companionway Carcass
Outboard Motor Bracket
Outboard Bracket Modification Kit

GENERAL SAFETY GROUP

Anchor w/Line
Personal Flotation Devices
Throwable Life Cushion
Fog Bell
Fire Extinguisher
Hand Held Flares
Chapman's "Piloting, Seamanship, and Small Boat Handling"
Electric Auto Bilge Pump

RIGGING

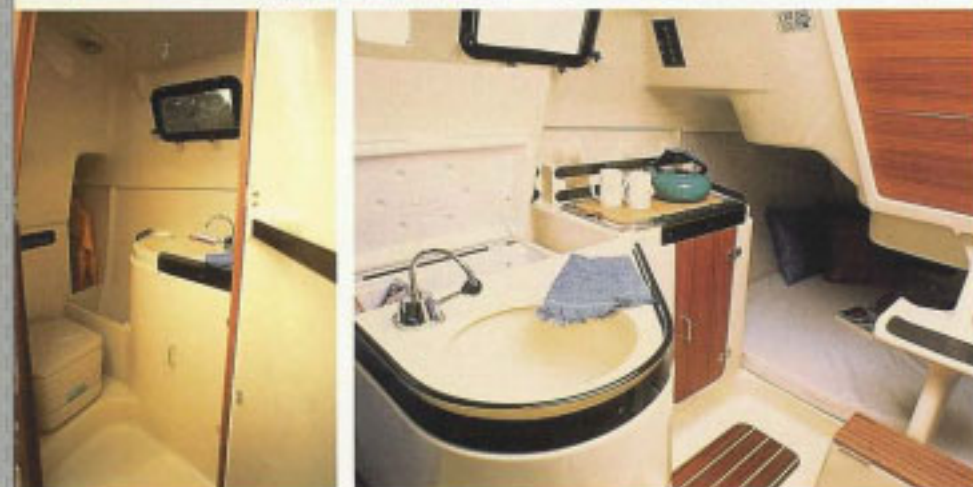
Full Batten Mainsail
Jiffy Reefing
4:1 Mainsheet System
Outhaul
Boom Topping Lift
Boom Vang
Fractional Rig
Internal Halyards Led to Cockpit
Halyard/Sheet Winches
Line Organizers
100% Jib w/Sheets
Winch Handle
Easy Mast Raising System
Triple Rope Clutch
Mast Crutch

DECK/HULL

100% Hand Laid Fiberglass Hull With Limited 5 Year Bottom Blister and Structural Warranty
Molded in Non Skid Deck Surfaces
Hinged Sea Hood
Kick Up Rudder
Stainless Steel Bow Pulpit, Stanchions, and Lifelines
Stainless Steel Fold Down Swim/Boarding Ladder
Mooring Cleats
Swing Centerboard w/Control Line to Cockpit
Positive Flotation
Outboard Motor Bracket
Recessed Anchor Well

SPECIFICATIONS

| | | |
|-------------------------------------|-------------|---------------------|
| LOA | 25'9" | 7.85m |
| LWL | 23'1-1/2" | 7.05m |
| BEAM | 8'11-1/2" | 2.73m |
| DRAFT | | |
| (UP) | 1'9" | 0.53m |
| (DOWN) | 6'0" | 1.83m |
| Boat weight w/o water ballast | 3,000lbs. | 1,363kg |
| Water Ballast | 2,000lbs. | 909kg |
| Displacement w/water ballast | 5,000lbs. | 2,272kg |
| Sail Area (w/100%) | 290 sq. ft. | 26.96m ² |
| L | 28'4" | 8.64m |
| J | 9'5-1/2" | 2.88m |
| P | 30'1" | 9.17m |
| E | 10'6" | 3.2m |
| Mast height (from DWL) | 40'4" | 12.3m |



HUNTER CUSTOMER'S "Bill of Rights"

Every person at Hunter Marine pledges 100 percent effort to provide you with:

- The best price and value available today.
- A safe, trouble-free boat for years of family enjoyment.
- A boat designed and built with innovation and premium materials.
- A company with the resources and experience to stand by its product, and its customers.
- A toll-free customer hotline so we can respond quickly to your needs and suggestions.
- A five-year limited warranty and five-year 100 percent bottom blister protection.



HUNTER MARINE CORPORATION
Post Office Box 1030 ■ Alachua, Florida 32615
Phone (904) 462-3077 ■ FAX (904) 462-4077
National Customer Hotline
US: 1-800-771-5556 ■ FL: 1-800-940-5556

Hunter Marine reserves the right to modify or change, without notice, any materials, specifications, equipment and/or accessories. All measurements are approximate. Standard equipment may vary for product sold outside the United States.

