

Committed to
Better Engineering.
HUNTER



LEGEND 45



LEGEND 45' SPECIFICATIONS

L.O.A.	46'6"	14.2 m.
L.W.L.	39'7"	12.1 m.
Beam	13'10"	4.2 m.
Displacement:		
Deep	25,000 lbs.	11400.0 kg.
Shoal	28,000 lbs.	12620.0 kg.
Draft:		
Deep	6'0"	2.0 m.
Shoal	3'7"	1.2 m.
Ballast:		
Deep	10,000 lbs.	4536.0 kg.
Shoal	10,000 lbs.	4536.0 kg.
Mast Height (from D/WL)	63'3"	19.3 m.
Sail Area (100% foretriangle)	952 sq. ft.	88.3 m. ²
E	16'5"	5.0 m.
I	17'10"	5.4 m.
P	31'9"	9.7 m.
I	58'10"	17.9 m.
Fuel	47 gal.	176 l.
Fresh water	124 gal.	469 l.

All measurements are approximate.





the head area so that two people can function at the same time. There's a unique writing desk and bulletin board, surrounded on one side by a comfortable corner seating arrangement. The entire area is secluded from the main salon and will offer you complete privacy.



The aft master suite is designed for the maximum use of space. Separate sleeping quarters and head area are designed for total privacy from each other and the rest of the vessel. The berthing area comes complete with a queen size bed, quilt and matching pillows.

Hanging lockers and stowage is abundant and easily accessible for all your needs. Lighting is well placed and assures you of no hidden corners or steps.

The head and shower areas are spacious and complete with full illumination. Corian® counter tops, stand-up shower and mirrors throughout.



additional space below decks due to a single penetration of the chainplate through the deck to the frame.

Another innovative Hunter design is the exterior hull-to-deck joint that minimizes leaks and acts as a spray rail. A custom pre-bent toe rail extrusion, with stanchion bases set outboard, prevents stubbed toes and adds safety while moving about under sail. Likewise, Hunter is the only production manufacturer to use the headliner as a structural stiffening member. The headliner angles off the deck and is bonded to the hull to create a gusset that stiffens the deck and takes torque out of the hull. It also acts as a wire chase.

Hunter is also the only U.S. sailboat manufacturer to use the B&R Rigging system (Pat. No. 3862613). This unique rigging system needs no babystay or running backstays, so you get a simplified system and faster tacking. The swept back spreaders allow tighter sheeting angles of the headsails and the rigging diagonals permit a smaller spar section that reduces windage, chafing, and interference with the leading edge of the mainsail.

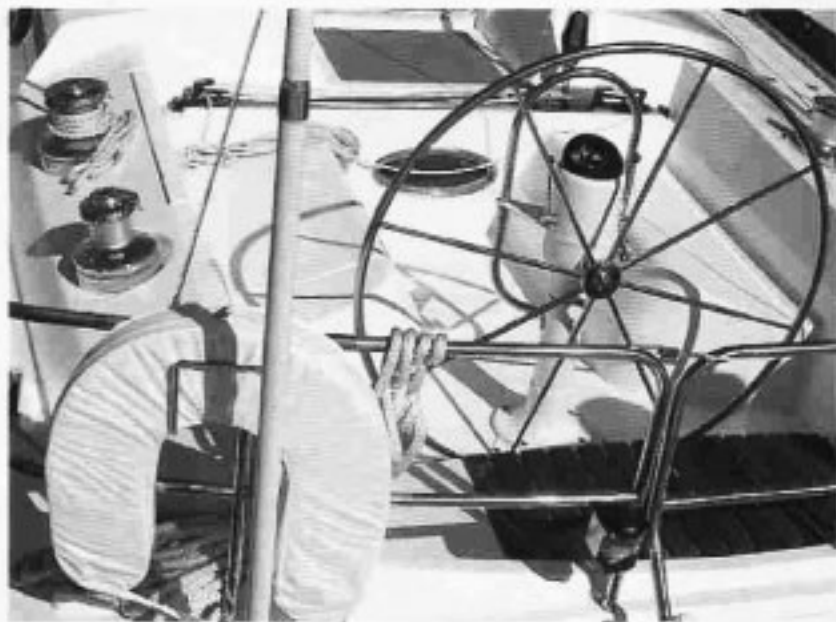
For years, Hunter has designed their boats so that all main halyards and lines lead aft, creating ease of sailing with a minimal amount of movement and effort. The entire deck construction is styled and sculptured so there are no hard edges found anywhere. The cockpit seats are contoured to fit the human body for additional comfort while sailing or just relaxing.

As you tour the Legend 45 you will find such detailed items as recessed wells for the winches, traveler, and the anchor well, as well as a walk-through bow pulpit. This advanced styling keeps the Legend 45 and all Hunter boats safer and easier to sail.

Last but not least, is Cruise Pac®; still the most innovative and complete equipment package offered in the industry today. The Legend 45 is proof of that. Not only do you receive all sails, winches, lines, anchor, swim-ladder and enough deck gear to compliment a "custom" boat; but below decks Hunter leaves nothing to be desired. Completely color coordinated throughout, quilts and matching pillows, well placed additional interior lighting and curtains, as well as adjustable shades. There's an AM/FM cassette stereo with 6 speakers, 3 burner CNG gimbaled stove and oven, easily accessible refrigerator/icebox as well as a microwave! The navigator's station comes with Loran, VHF, digital wind speed indicator, digital knot meter and digital depth finder. The Legend 45 sports an auxiliary generator for additional power while at sea. Hunter makes sure you're outfitted from stem-to-stern the day of your commissioning, even down to the life jackets, safety devices and a copy of *Chapman's Piloting, Seamanship and Small Boat Handling*.

Combining innovation with a modern, well run facility and Warren R. Lahr's vast experience at sea assures you of a sailboat that is a leader in safety and engineering. When you have "Single-handed" over 25,000 ocean miles, you design and build a craft that uses "Ergonomics", a study of man and machine called Biotechnology that personalizes a Hunter boat to give you almost total compatibility with your craft. Whether it be the day sailor or those who venture, the Legend 45 is "Ergonomically" designed for safety, comfort and ease of sailing.

When you purchase the Legend 45 or any Hunter boat, you're buying an innovation, not an imitation.



Innovations Make Hunter The Leader.

For over three generations, the Luhrs family has dedicated themselves to the art of shipbuilding and sailing. The present day Hunter Marine Corporation is proof of our "Commitment to Better Engineering".

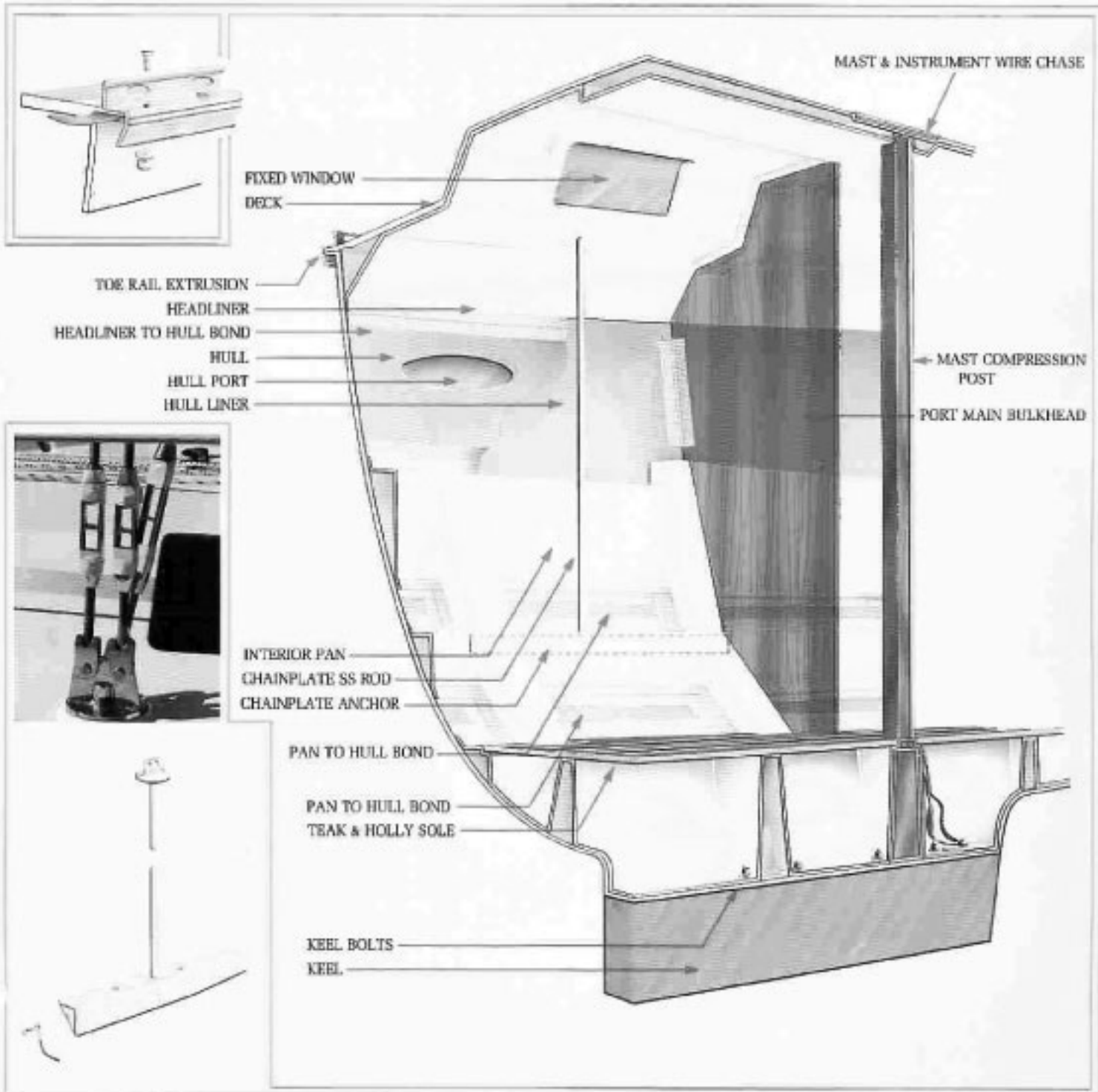
Warren R. Luhrs, CEO and head of the Hunter Design Group is the most active owner, naval architect and sailor in the industry today. He has logged over 25,000 solo miles of ocean racing and sailing. His latest achievements aboard "Thursday's Child" in the 1984 OSTAR race saw him finish as the 1st monohull across the line, 1st American across the line and 1st monohull in his class. The techniques developed for this winning style have created a line of Hunter sailboats designed for the offshore cruiser, racer, or for just pure pleasure.

Because of our "Commitment to Better Engineering", Hunter Marine

leads the industry in innovation, technology and design and has done so for years. Modern facilities, equipment, and testing on an on-going routine keeps Hunter Marine in the fore-front of the industry.

For years, Hunter has incorporated the use of a full length internal frame and stringer system of unidirectional fiberglass vacuum bonded directly to the hull to increase stiffness without adding additional weight.

Hunter's innovative techniques and designs have incorporated a chainplate system that brings all the shrouds to one location on the deck and ties them directly to the internal frame and hull. This allows the load of the chainplate to be carried by the internal frame and stringer system producing additional strength and safety as well as adding





Comments from Warren R. Luhrs

"The conception was to design a fast sleek yacht that was comfortable, well thought out and appointed.

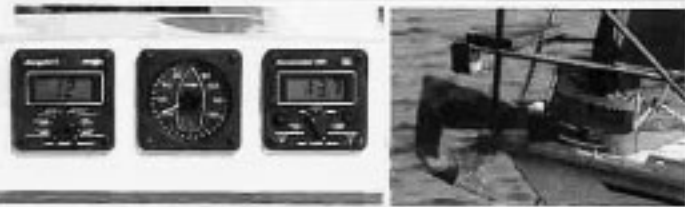
From the experiences we gained from our successful 40', we put the program to work. Concentrating on a spacious boat designed to sleep two couples in privacy with a well thought out deck and cockpit arrangement.

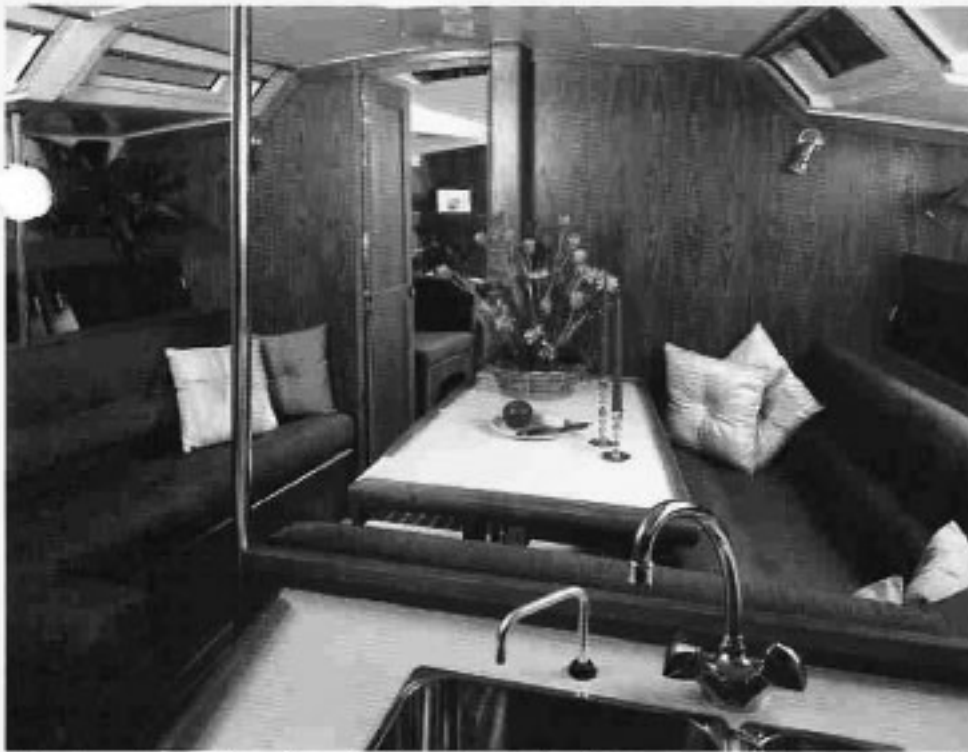
The result was most pleasing. From the ease she has in a seaway, to the balanced helm, to the sleek soft lines of her cabin and cockpit. She offers the style and grace of a larger yacht with the speed and performance of a custom built boat.

I am pleased with every aspect of the Legend 45 and know you will be too once you've walked her decks and sailed her."

Warren R. Luhrs

CEO, Hunter Marine Corporation





The Hunter Design Group has styled the main salon for the Legend 45 such that it surpasses all but a custom boat. As throughout the rest of the interior, the main salon is completely color coordinated, all bulkheads have a satin finish and the cabin sole is finished in polyurethane. This custom finish provides ease of cleaning, durability and low maintenance.

Through advanced styling, the Legend 45 sports six flush mounted wrap-around tinted windows in the main salon. Each has its own adjustable shade to control the lighting that you wish. Combined with an assortment of additional interior lighting, you can transform the main salon into almost any mood you desire.

There is an abundance of shelving and stowage for all the personal belongings you need and the seating area is adequate for eight friends or crew. The fold over dinette will easily accommodate six for dinner or four for bridge. The headroom is a spacious 6'4" and the companionways fore and aft are wide for ease of movement.

As above decks, all edges are sculptured and contoured for safety and ease of movement throughout.

Your Legend 45 is sure to bring you many hours of enjoyment and happiness in the years to come.



Who but Hunter could turn a V-berth into a Master Suite! This forward area is truly unique in design and offers its occupants complete facilities and privacy.

There's full headroom and a large berthing area as well as a full head and stand-up shower forward.

Two hanging lockers as well as plenty of stowage area are easily accessible for all your belongings. The vanity, with Corian® counter top; sink and mirror, is separate from



Where else could you find a more spacious and complete galley? The Legend 45 has all the utilitarian items you would find at home. A three burner CNC gimballed stove and oven, stainless steel double sink, easy access refrigerator/freezer and to top it off, a microwave! Workspace is bountiful, enough room for two chefs and stowage is complete with shelves and drawers located for easy access. From rack-of-lamb to stone crab claws, this galley is complete.



What other boatbuilders besides Hunter could create a navigator's station as complete as this one?

The navigation station comes complete with a silhouette of the boat showing all the navigational lights and if they're operational.

There's a full compliment of electronics as well; Loran, VHF, and digital readouts of boat speed and wind. A full control panel with circuit breakers to show you what is operational and what isn't. The Legend 45 comes complete with AM/FM cassette stereo and six speakers, located at the proper areas below decks for the best sound you can acquire through the system. The entire work area is complimented with a spacious chart table and a pedestal chair for total comfort while plotting your next port-o'-call.

CRUISE PAC®

For years, Hunter Marine has offered the most complete accessory and marine hardware package in the industry. When you purchase a Hunter boat, your buying power is at its best. Hunter goes out of their way to be sure that you have everything you need to set sail the day of your commissioning. Check the listing and compare for yourself why Hunter is your best buy in the sailboat market today. Call or write Hunter Marine today for the name of your nearest Hunter Marine dealer or any additional information you may require.

Hunter. Committed to Better Engineering.



© 1986 Hunter Marine Corporation
Printed in U.S.A. 5/86

Spinnaker Gear shown in some of the photographs is not part of the standard CRUISE-PAC® equipment package.

RIGGING

Patented B&R Rig (No. 3862613)
Dacron sails
Main
Furling 110% genoa
Lifted reefing main
Dacron braided sheets
Two, two-speed primary winches (self-tailing)
Two, two-speed secondary winches (self-tailing)
Two two-speed halyard winches (self-tailing)
Two-speed main-sheet winch (self-tailing)
Sheet stoppers
Line organizers (2)
Internal halyards, pre-stretched dacron
Mainsheet traveler
Boom vang
Inboard recessed genoa tracks with cars
Aluminum mast and boom
Windex®

ELECTRONICS

VHF radio
Loran
Digital knotmeter
Digital windspeed
Digital depthfinder
Navigator's station repeater

DECK

Anchor windlass mounted in on-deck anchor well
Ergonomically designed cockpit
Bow pulpit, stainless steel
Stern rail, stainless steel
Stainless steel swim ladder
Stainless steel fender rack
Double lifelines with midship boarding gates (port & starboard)
Mooring cleats
Stainless steel handrails
Flush wraparound tinted windows
Cockpit seat lockers
Molded-in non-skid deck
CNG cylinder well
CNG cylinders
Sea hood with instrument mounting pod

COCKPIT

T-shaped cockpit
Pedestal steering/winch controls and lighted compass
Pedestal guard
Pedestal brake
Stowage for an 8-man life raft
Wraparound coamings

ELECTRICAL

3.8 KW generator with battery
Dual 12 volt batteries with switch
Battery charger
Custom electrical panel
European running lights
Bilge pump, automatic
110 volt dockside power with 50' (15.2 m) cord
Multiple AC outlets in cabin

Mast: steaming light
Anchor light
Cabin lights

CABIN

Satin finished teak interior
Selected hardwood trim
Teak and holly cabin sole with polyurethane finish
Large aft cabin
Curtains
AM/FM cassette stereo with 6 speakers
2 fully enclosed heads
Vanities with Corian® countertops
Flush thru hulls with seacocks
Navigator's station with flush mounted instruments
Chart light
Writing desk
Stainless steel opening ports
Fixed hull ports
Tinted acrylic slider hatch
Tinted mid-cabin vent hatches
3 full hanging lockers
Manual bilge pump
Pressure water
Fabric cushions
Sail locker forward
Solar vents
Custom fitted color coordinated quilt with pillows for the forward master suite and the aft suite
Color coordinated pillows for the main salon
Custom fitted sheets for the forward master suite and the aft suite
Vacuum

GALLEY

Stainless steel double sink
Hot and cold pressure water system
Salt water pump
Gimballed 3 burner CNG stove with oven
Microwave
High pressure laminated countertop
Ice box/refrigerator with easy opening countertop
Freshwater tank:
Gallons 124
Liters 469
Dishes - service for eight designed for use in the marine environment

AUXILIARY POWER

Diesel engine, freshwater cooled
Fuel tank:
Gallons 47
Liters 178

GENERAL SAFETY GROUP

Anchor and line
Life jackets
Signal horn
Throwable device
2 fire extinguishers
Emergency tiller
Chapman's Plotting, Seamanship and Small Boat Handling

HUNTER

Hunter Marine Corporation
P.O. Box 1030 • Route 441
Alachua, Florida 32615

displ - deep (ft) 26,950 / vol. / master