



HUNTER

49



HUNTER 49



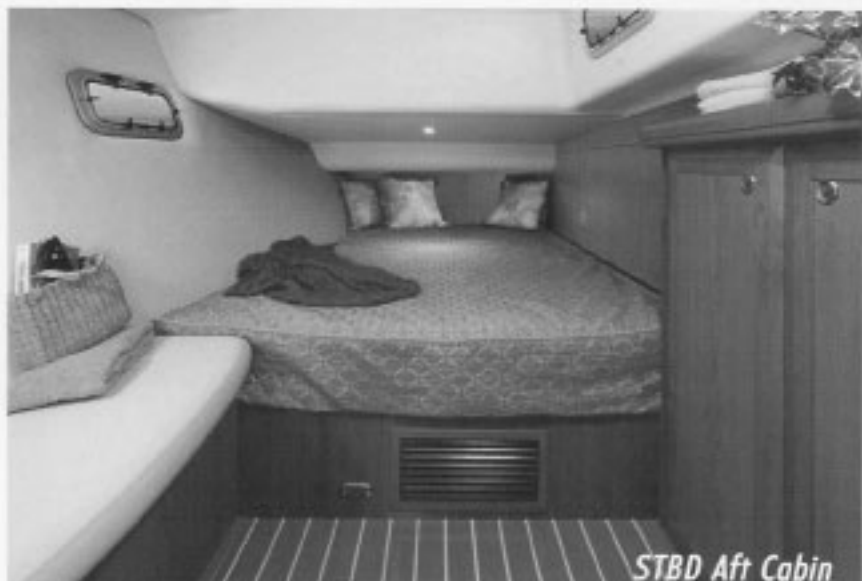
A robust sailing platform with unsurpassed versatility, the Hunter 49 can be configured to cruise around the harbor, or around the world in comfort. Solid construction, a high ballast ratio and a stout B & R rig are the basic elements that make this flagship capable and safe for the bluewater cruise of your dreams.

Fortunately many attributes that make a boat comfortable for long distance cruising also make shorter trips more pleasant. Dual helm stations provide outstanding visibility and a multitude of seating options. The fractional sailplan is integrated with our trademark cockpit Traveler Arch™ and a proven deck layout to maximize ease of handling under sail, especially for shorthanded crews. The large balanced rudder and shaft driven steering system deliver pinpoint maneuverability and fingertip control, even under full sail. Never has a boat so large been so easy to handle with confidence in every condition.

Below-decks, an efficient floorplan is executed in furniture quality woodwork for a bright interior that is as functional as it is beautiful. Incredible storage capacity, easy systems access and a deep bilge sump demonstrate that attention to detail below the surface remains a priority for your extended enjoyment of this amazingly capable cruising platform.



Galley



STBD Aft Cabin





FWD Cabin



Port Aft Cabin



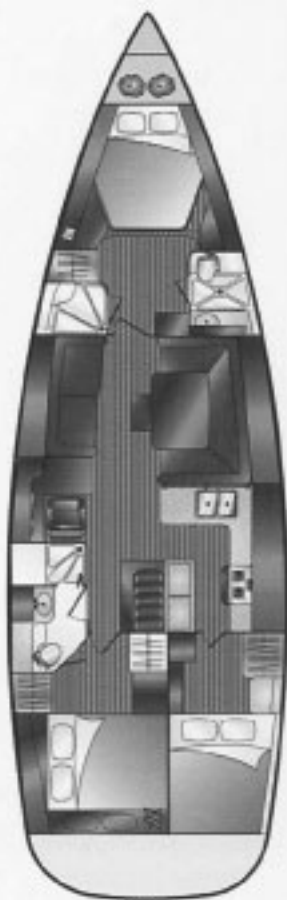


Salon

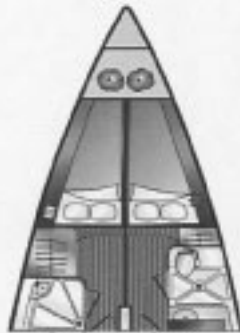


Navigation Station





Standard



Four Stateroom Option

Specifications

Length Overall	49'11"	15.21 m
Hull Length	47'10"	14.58 m
Waterline Length	43'10"	13.36 m
Beam	14'9"	4.47 m
Draft (Shoal)	5'6"	1.68 m
Draft (Deep)	7'0"	2.13 m
Displacement	32,813 lbs	14,884 kg
Ballast (Shoal)	12,544 lbs	5,690 kg
Ballast (Deep)	11,216 lbs	5,087 kg
Mast Height	63'4"	19.3 m
Mast Height (Optional tall Rig)	68'6"	20.9 m
Soil Area (Standard)	1,277 sq ft	118.64 sq m
Soil Area - (Furling w/Vertical Batten)	1,161 sq ft	107.86 sq m
Soil Area (Cutter Rig)	1,316 sq ft	122.26 sq m
Additional Soil Area (w/Tall 97 Rig, Furling Option)	97 sq ft	9.01 sq m
Additional Soil Area (w/110% Rig, Furling Option)	77 sq ft	7.15 sq m
Overlapping Jib Option		
I	54'7"	16.64 m
J	16'6"	5.03 m
P (Standard)	51'7"	15.73 m
P (Furling)	50'7"	15.42 m
P (Tall Rig Option)	55'9"	16.99 m
E (Standard)	21'10"	6.65 m
E (Furling)	23'9"	7.24 m
Headroom	6'9"	2.06 m
Fuel Capacity (Standard)	150 gal	568 liters
Fuel Capacity (Optional)	272 gal	840 liters
Water Capacity	200 gal	757 liters
Holding Tank Capacity	52 gal	197 liters
Water Heater	11 gal	42 liters
Inboard Engine (Standard)	75 hp	56 kw
Inboard Engine (Optional)	100 hp	75 kw
CE Classification	A 13	A 13

DESIGN

Glenn Henderson and the Hunter Design Team

*All measurements are approximate and subject to change without notice